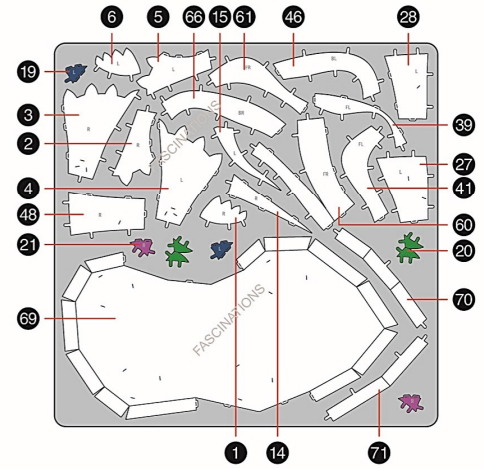
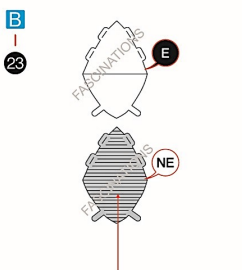


TRICERATOPS ME1011

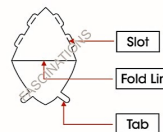
It is highly recommended that you visit www.metalearth.com/360/ME1011 to see the completed model before assembling your own



TO CREATE THE BEST CONNECTIONS



Consider these engraved stripes as supporting features for the bend



Legends:

- Engraved/ Color side
- Non - engraved/ Silver side
- Attention point
- Insert tab and bend 90 degrees
- Insert tab and twist 90 degrees

Assembly tip:

If needed, slightly twist tabs to hold parts together then untwist and bend them down for a nice finish.

- Yellow areas should be curled
- Red areas should be folded

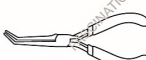
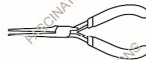
In order to avoid possible injury from sharp edges, please carefully discard the metal sheets after parts have been removed.

Recommended tools:

- Wire cutters: helpful for taking parts from the metal sheets.

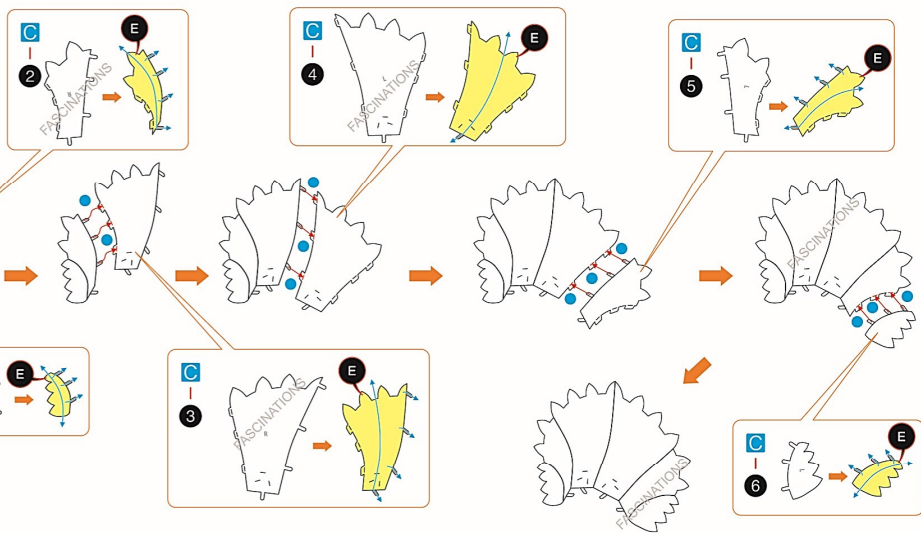


- Tweezers or needle nose pliers: helpful for folding parts, bending and twisting tabs.

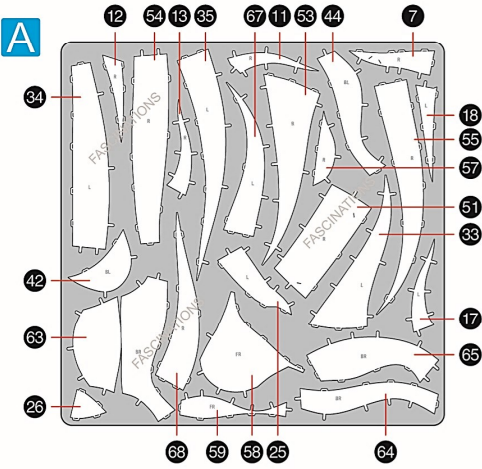


ASSEMBLY FLOW CHART

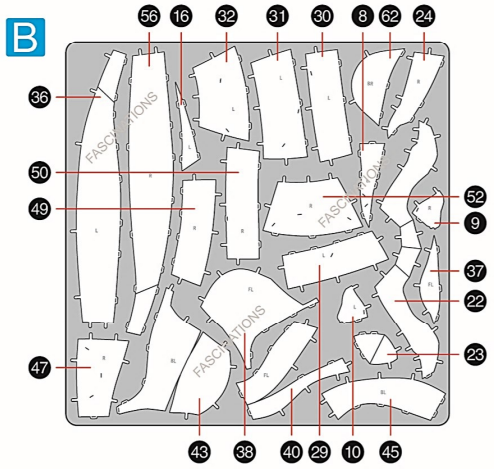
Step 1



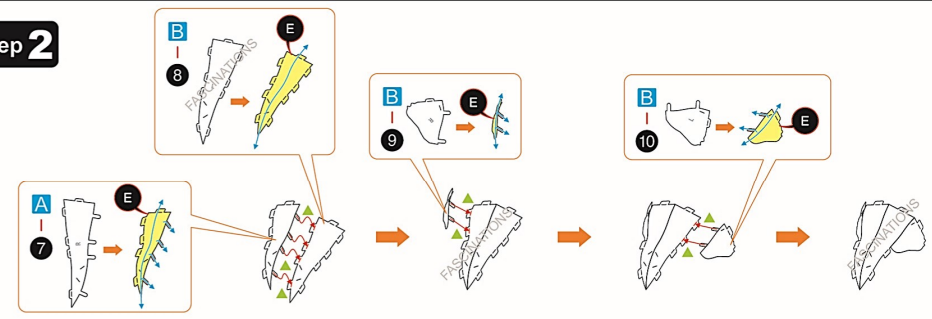
METAL SHEETS

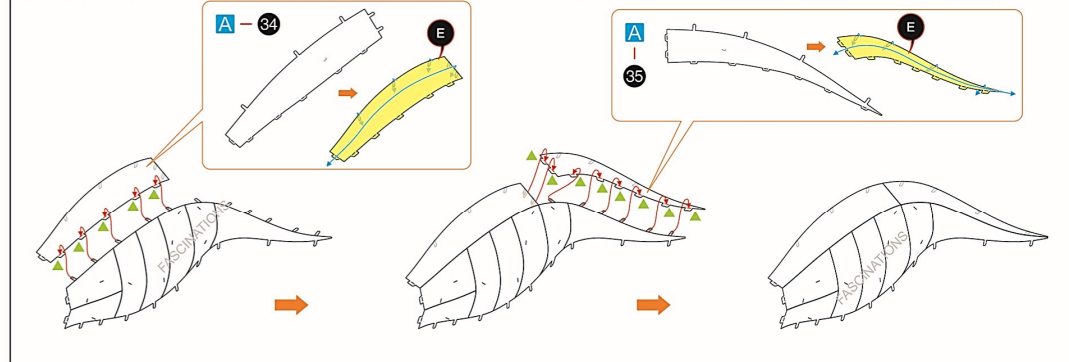
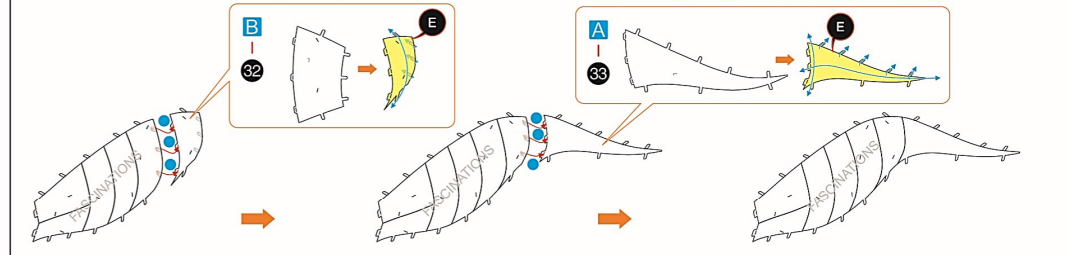
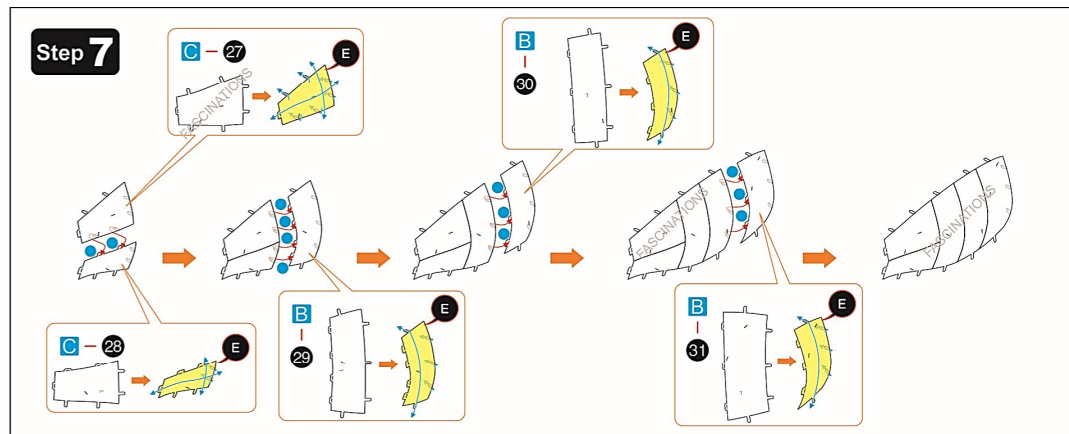
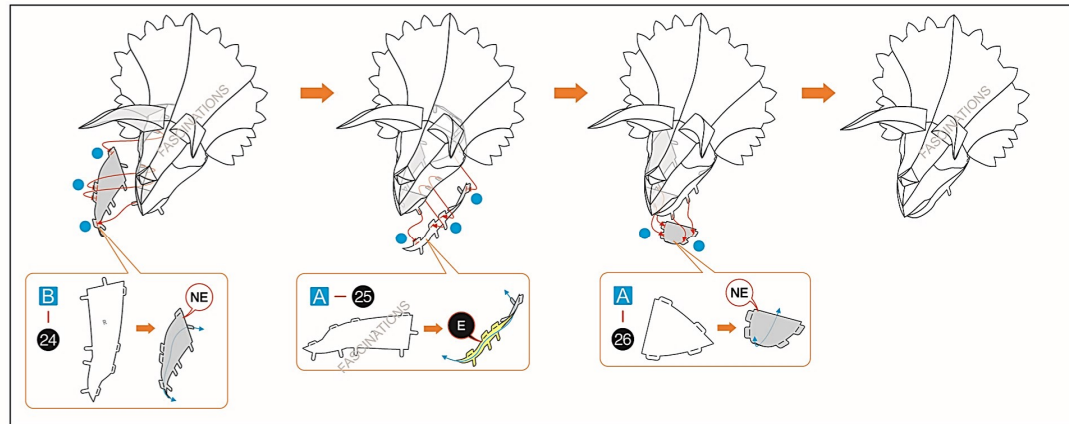
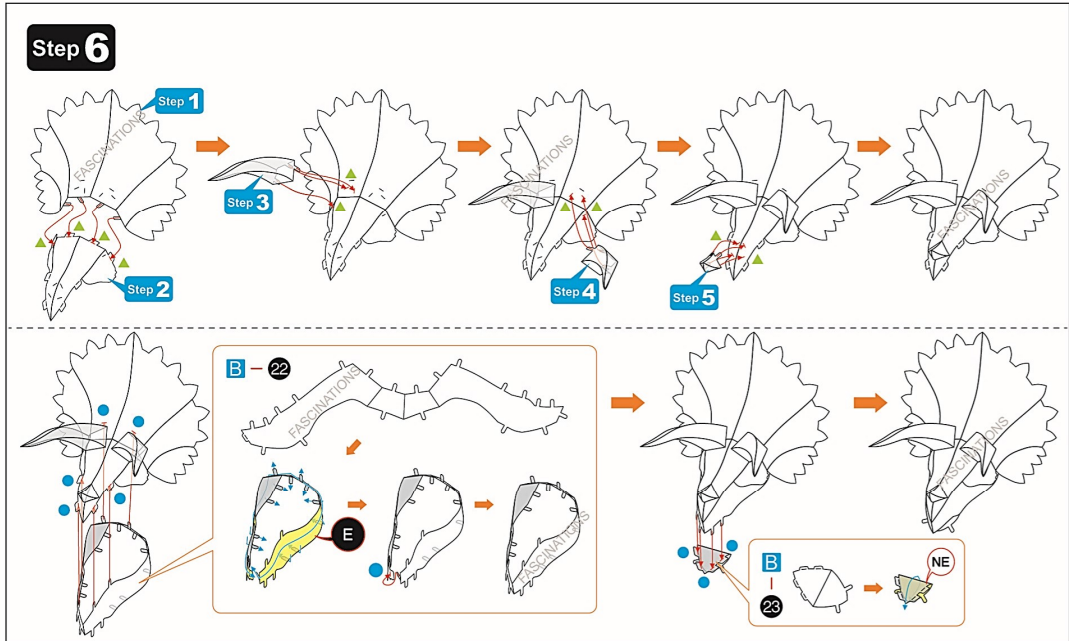
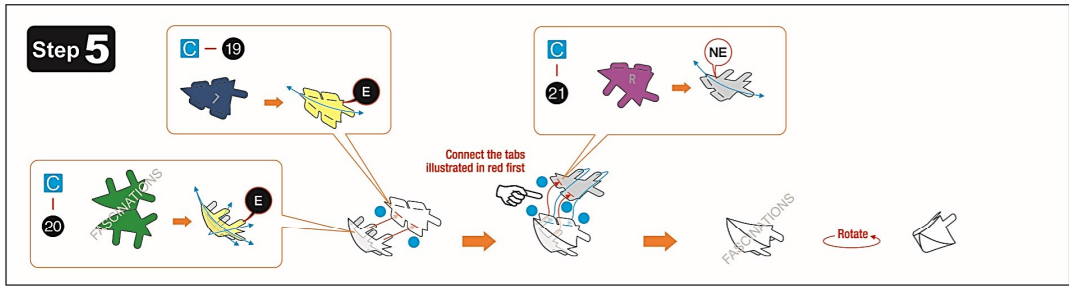
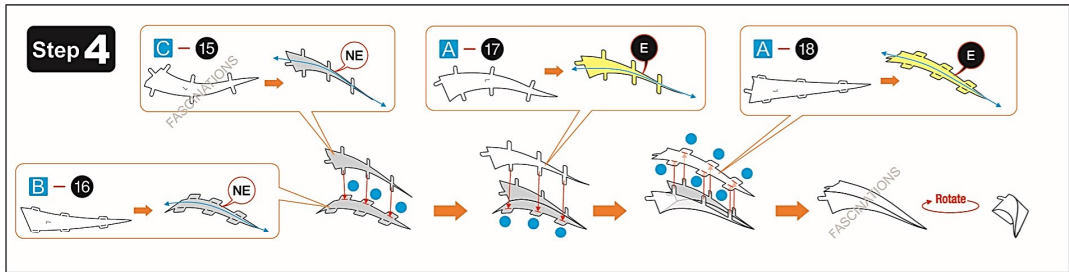
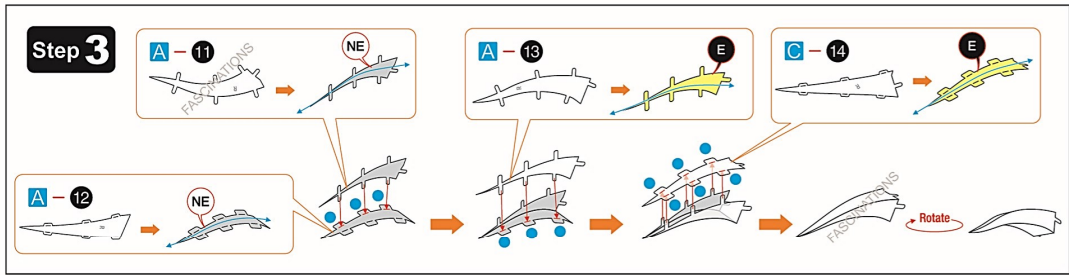


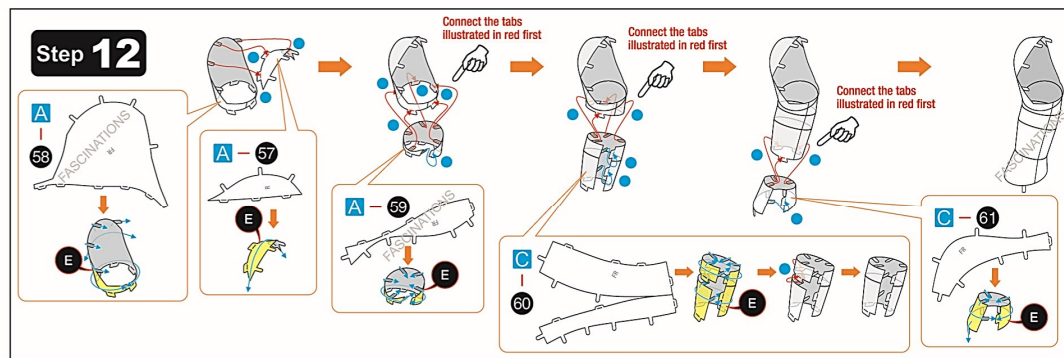
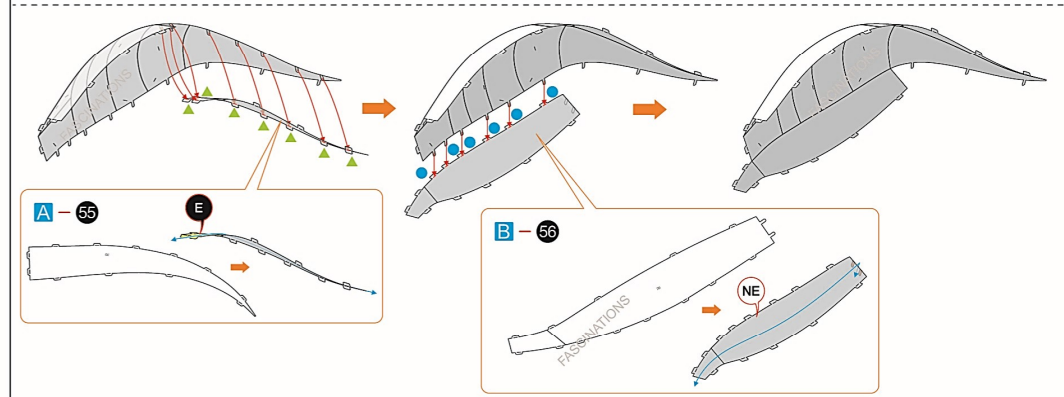
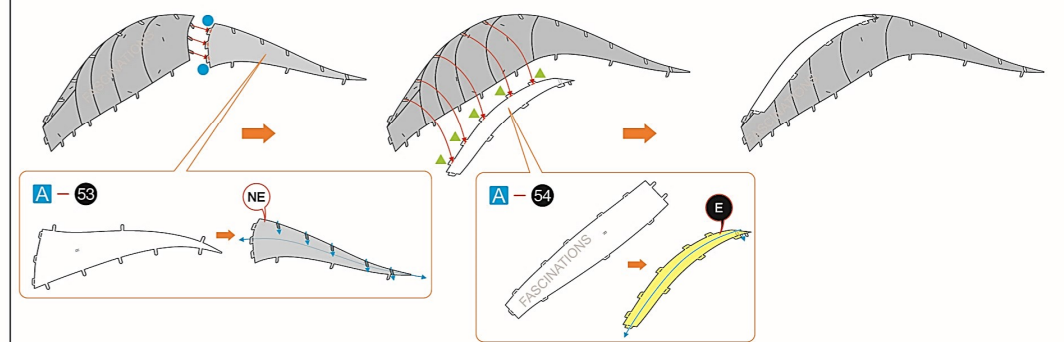
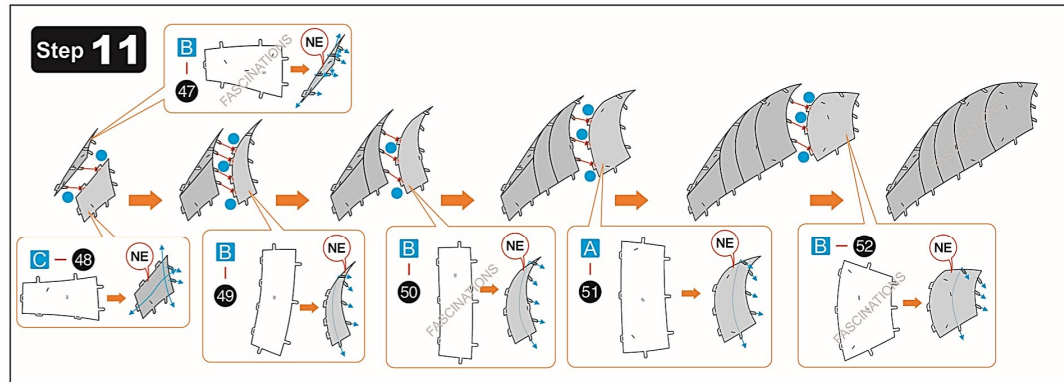
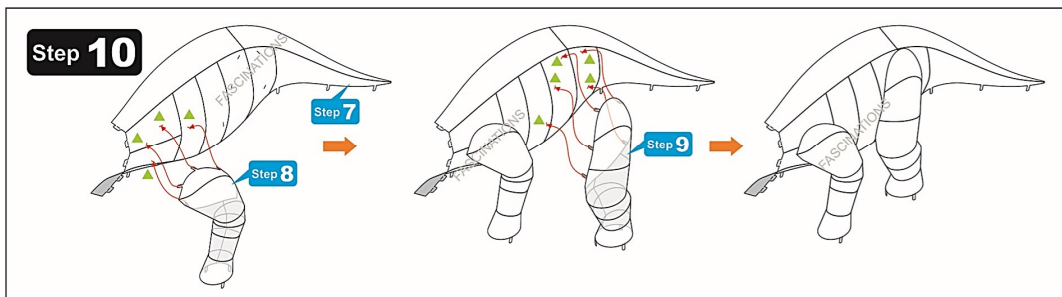
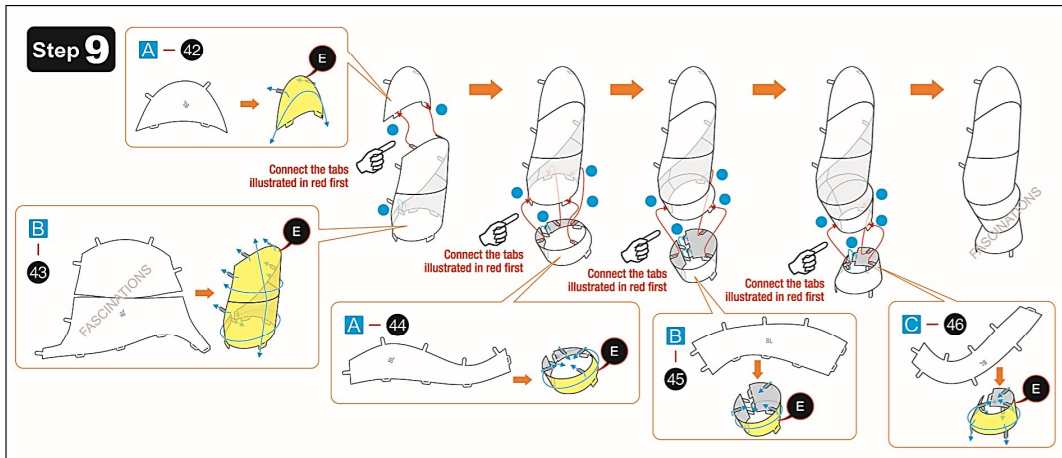
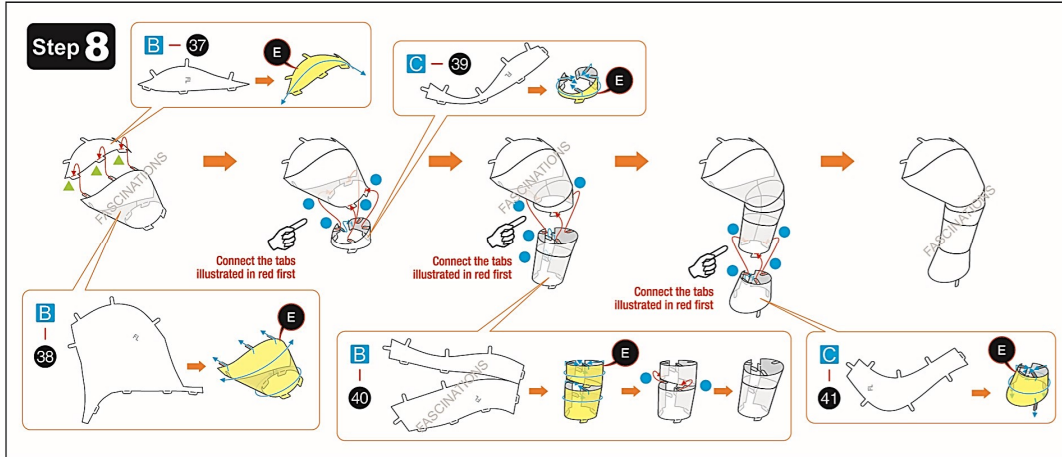
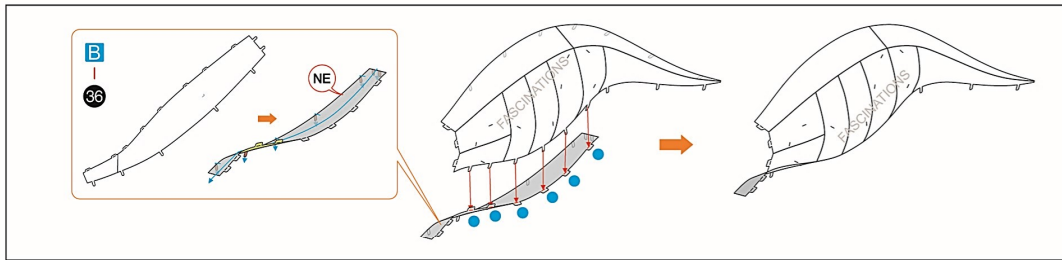
Parts with same color are duplicates



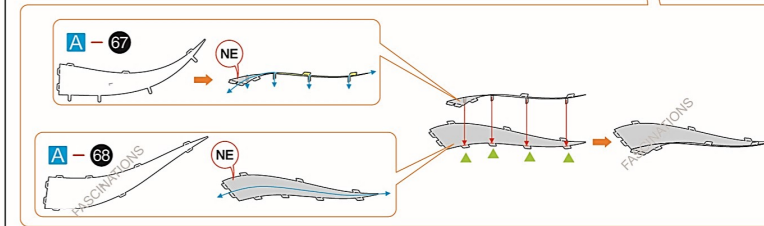
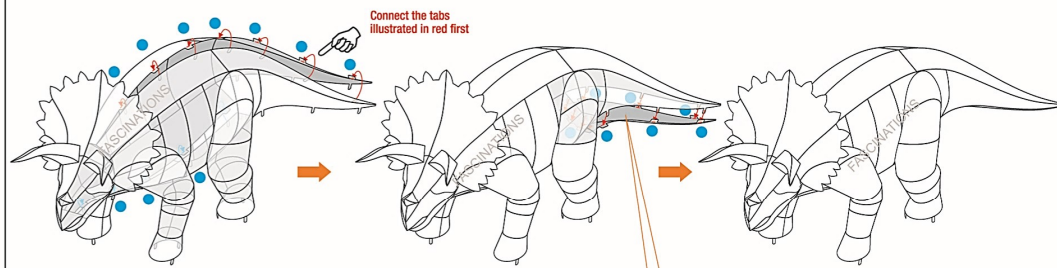
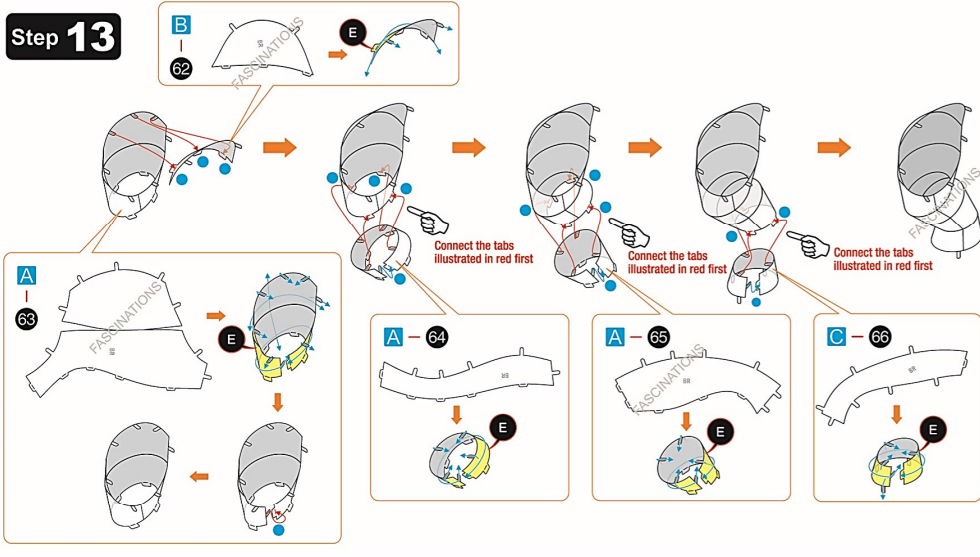
Step 2



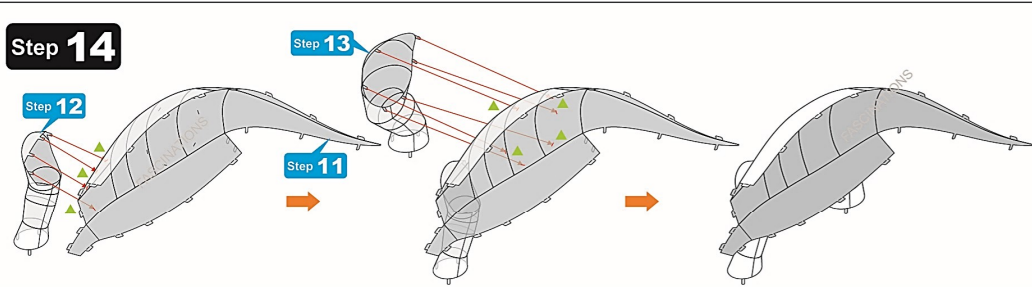




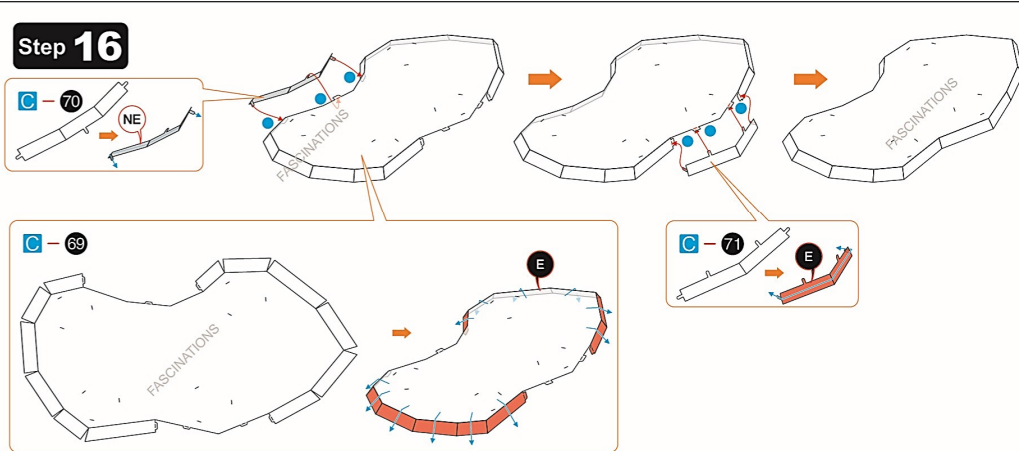
Step 13



Step 14



Step 16



Step 15

