

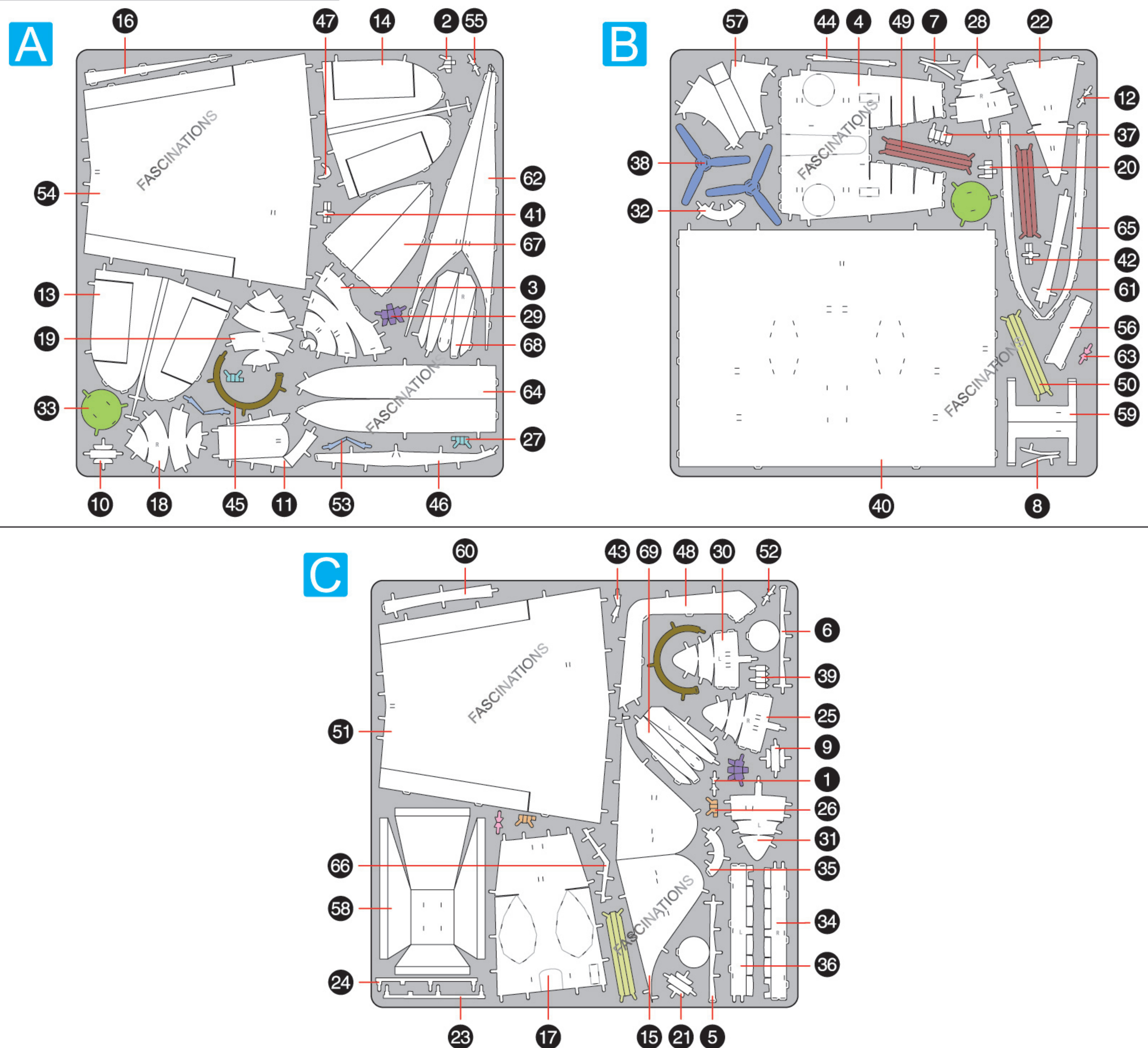
CONSOLIDATED PBY CATALINA ME1013



360°
vie

It is highly recommended that you visit
www.metalearth.com/360/ME1013
to see the completed model before assembling your own

METAL SHEETS

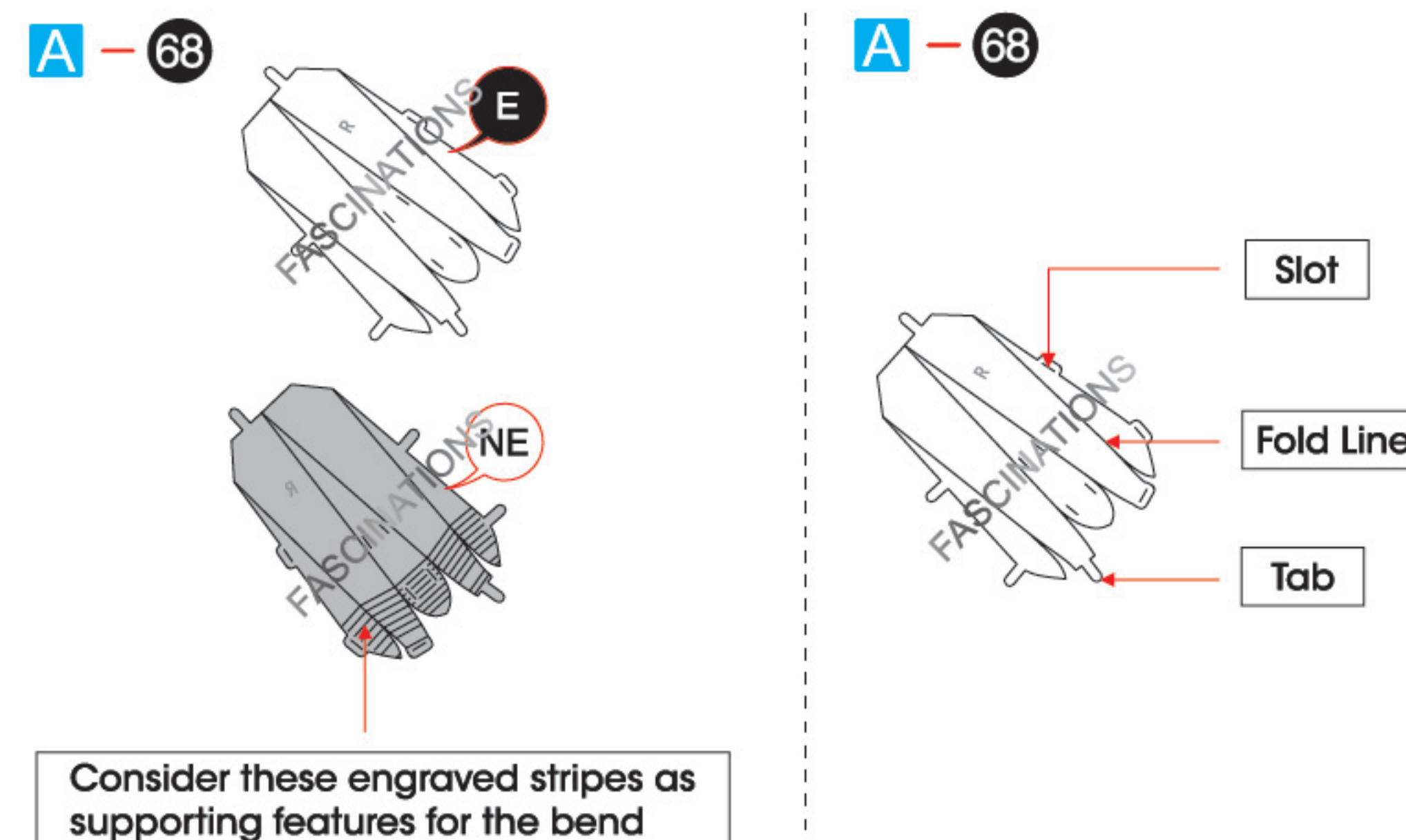


In order to avoid possible injury from sharp edges, please carefully discard the metal sheets after parts have been removed.



Go to www.metalearth.com/360/ME1013 to see the zoomable PDF version of this instruction sheet

TO CREATE THE BEST CONNECTIONS



Legends:

- E** Engraved/ Color side
- NE** Non - engraved/ Silver side
- Attention point
- Insert tab and bend 90 degrees
- Insert tab and twist 90 degrees

Assembly tip:

If needed, slightly twist tabs to hold parts together then untwist and bend them down for a nice finish.

- Yellow areas should be curled
- Red areas should be folded

Recommended tools:

- Wire cutters: helpful for taking parts from the metal sheets.

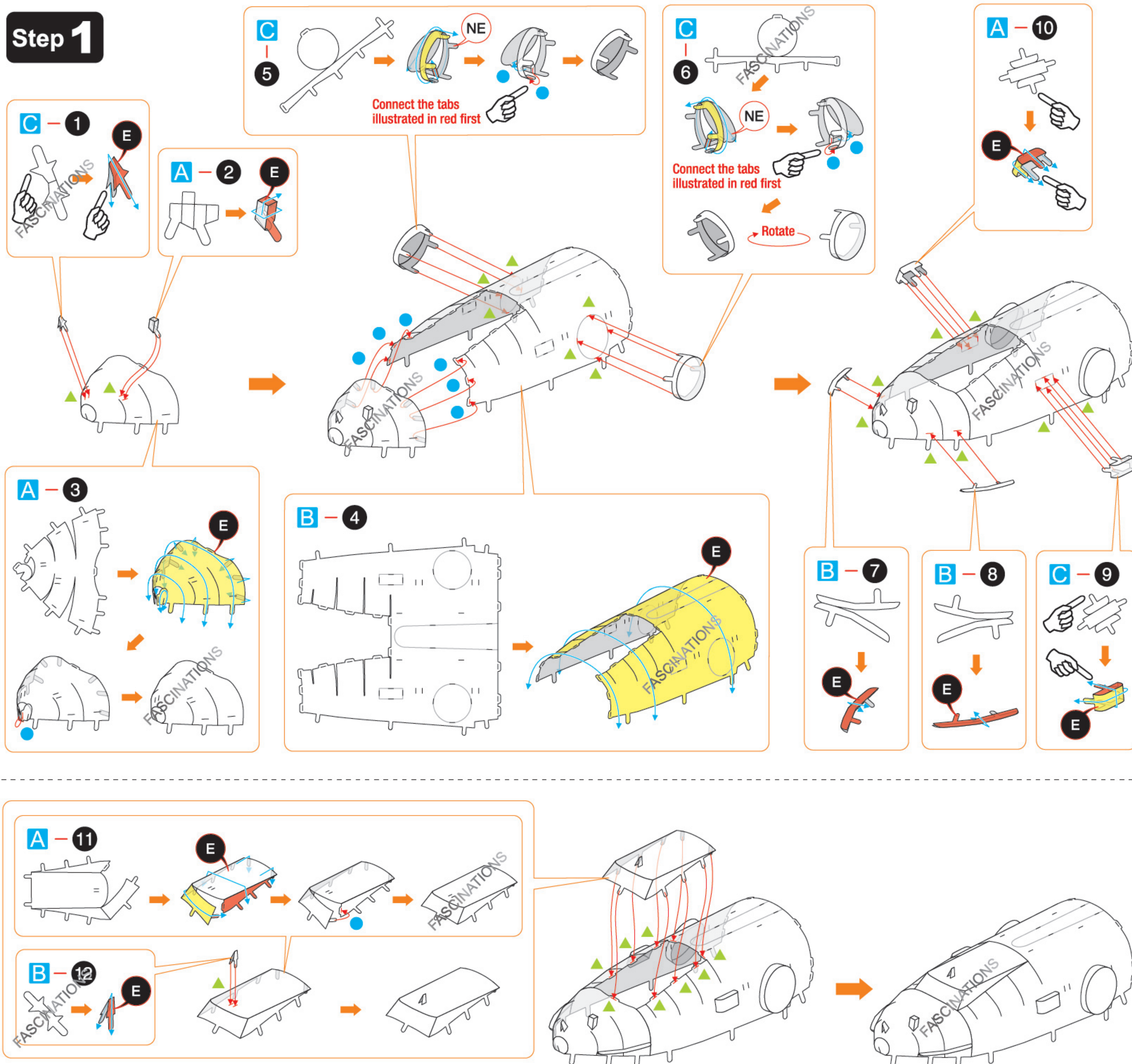


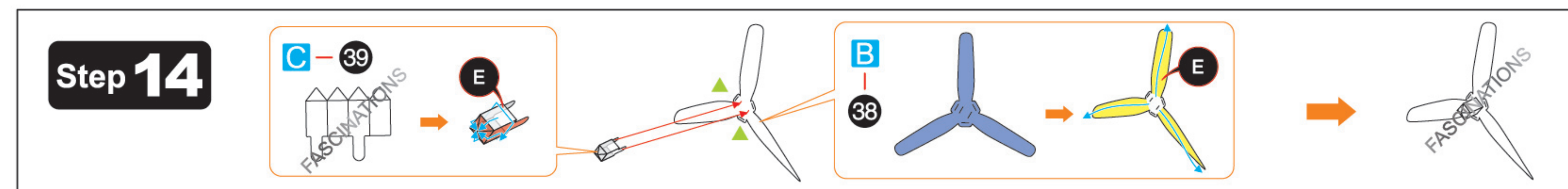
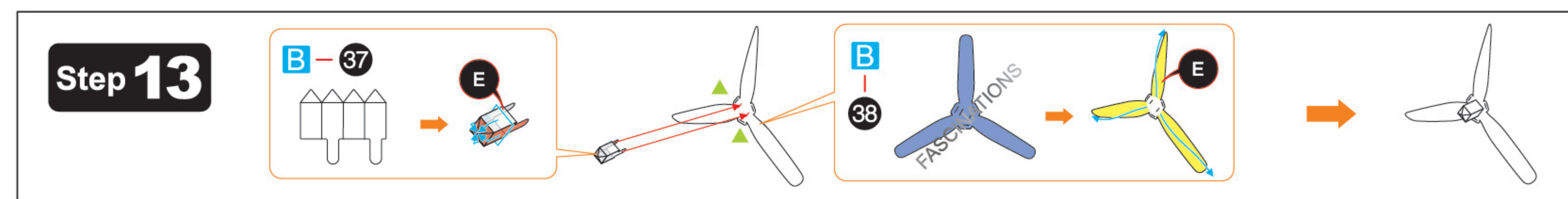
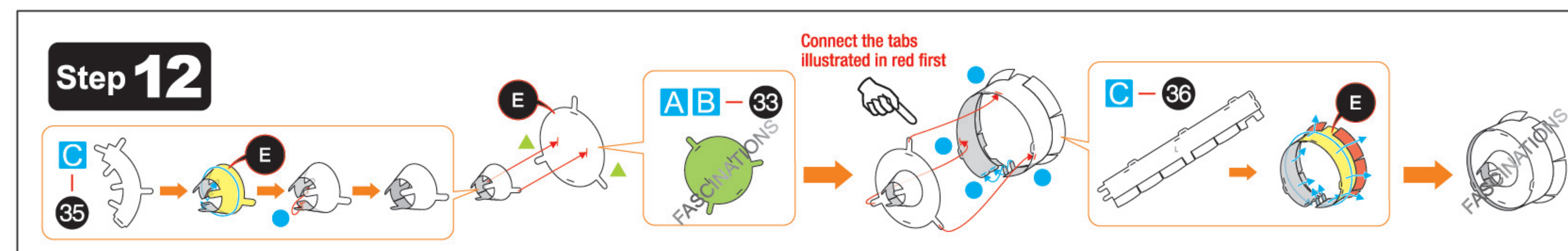
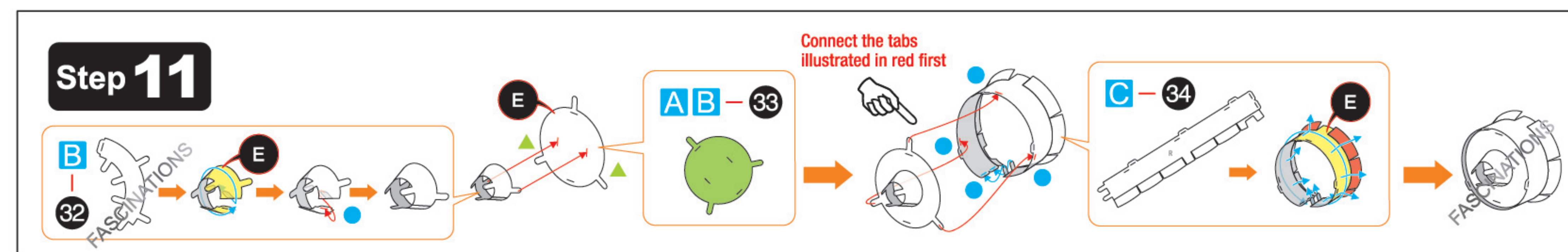
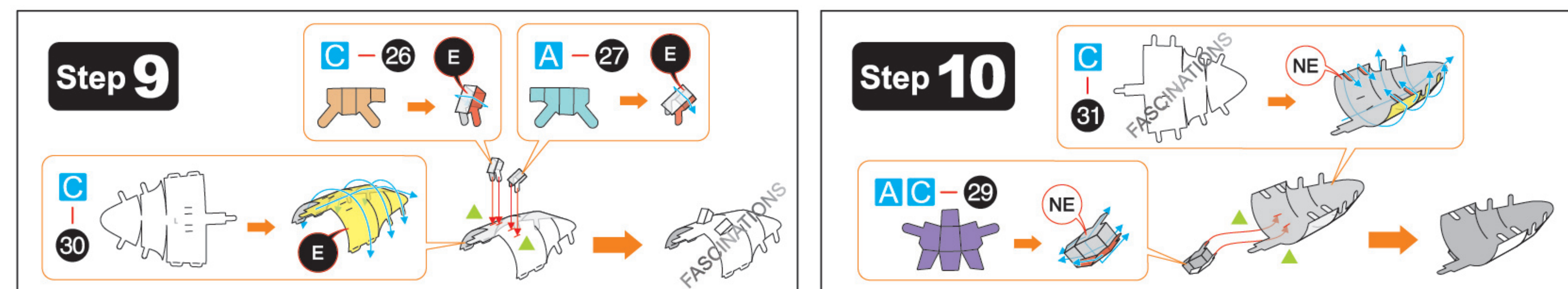
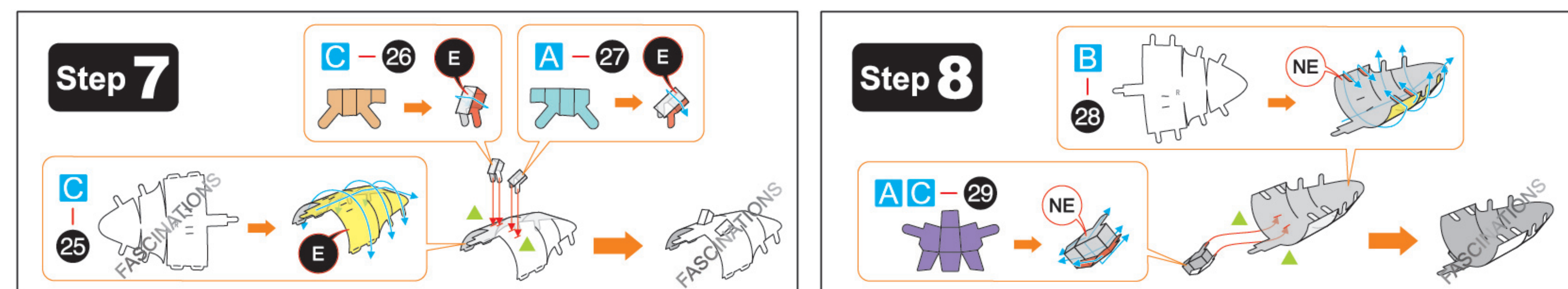
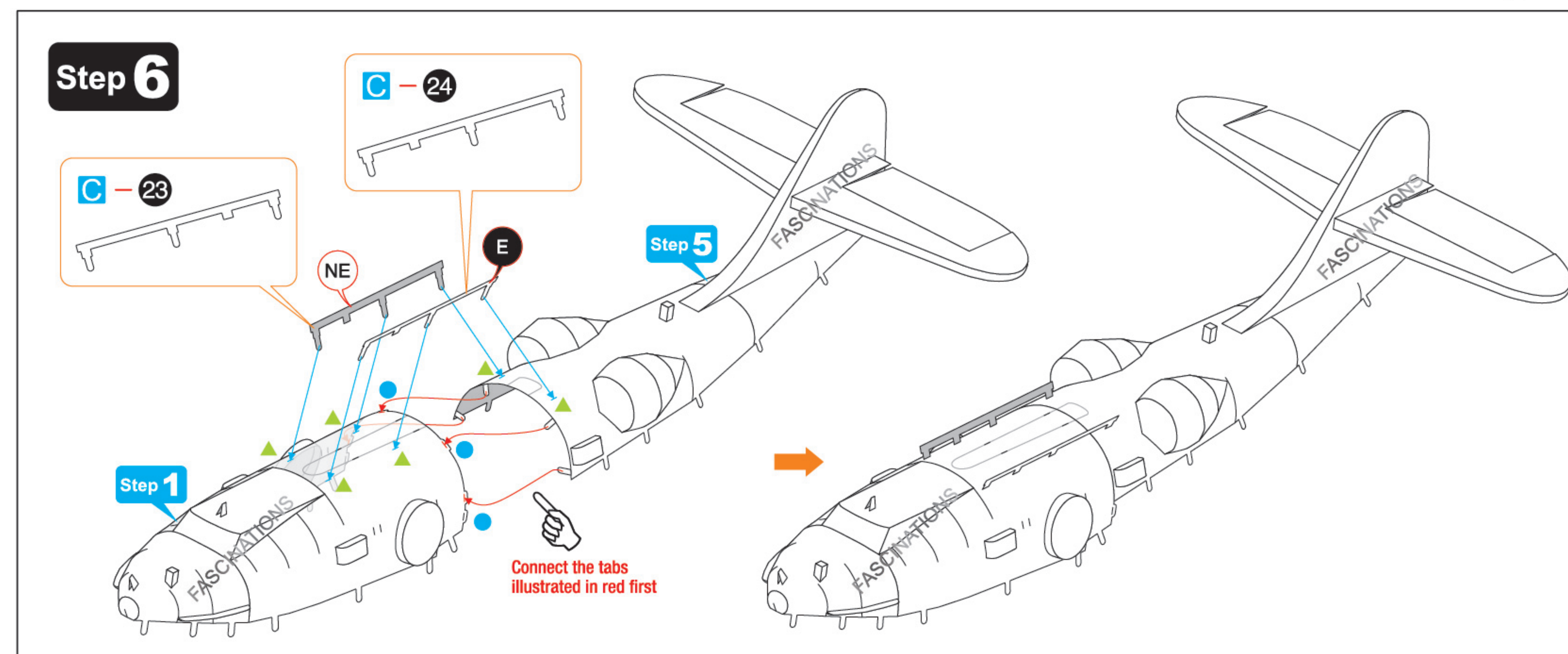
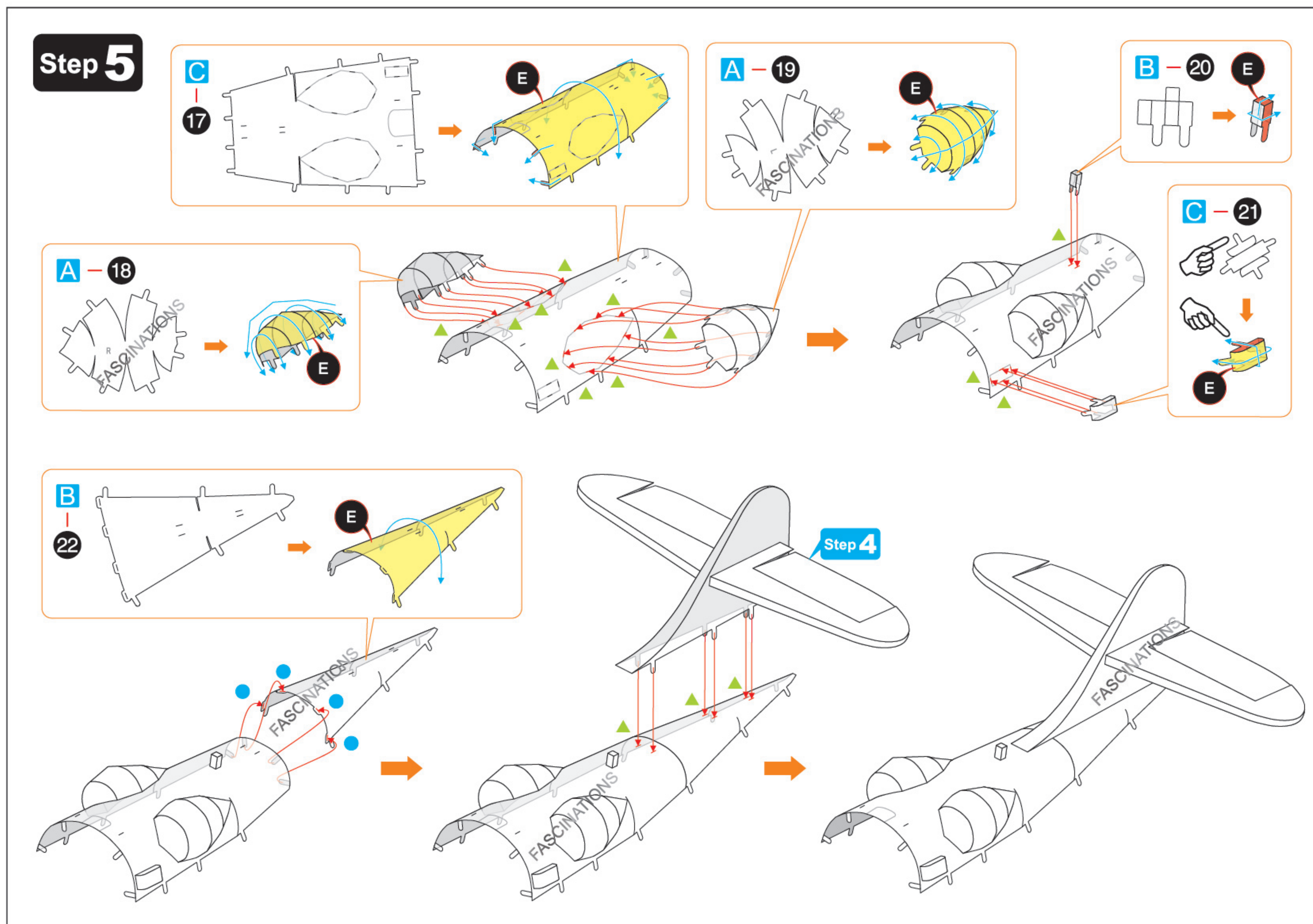
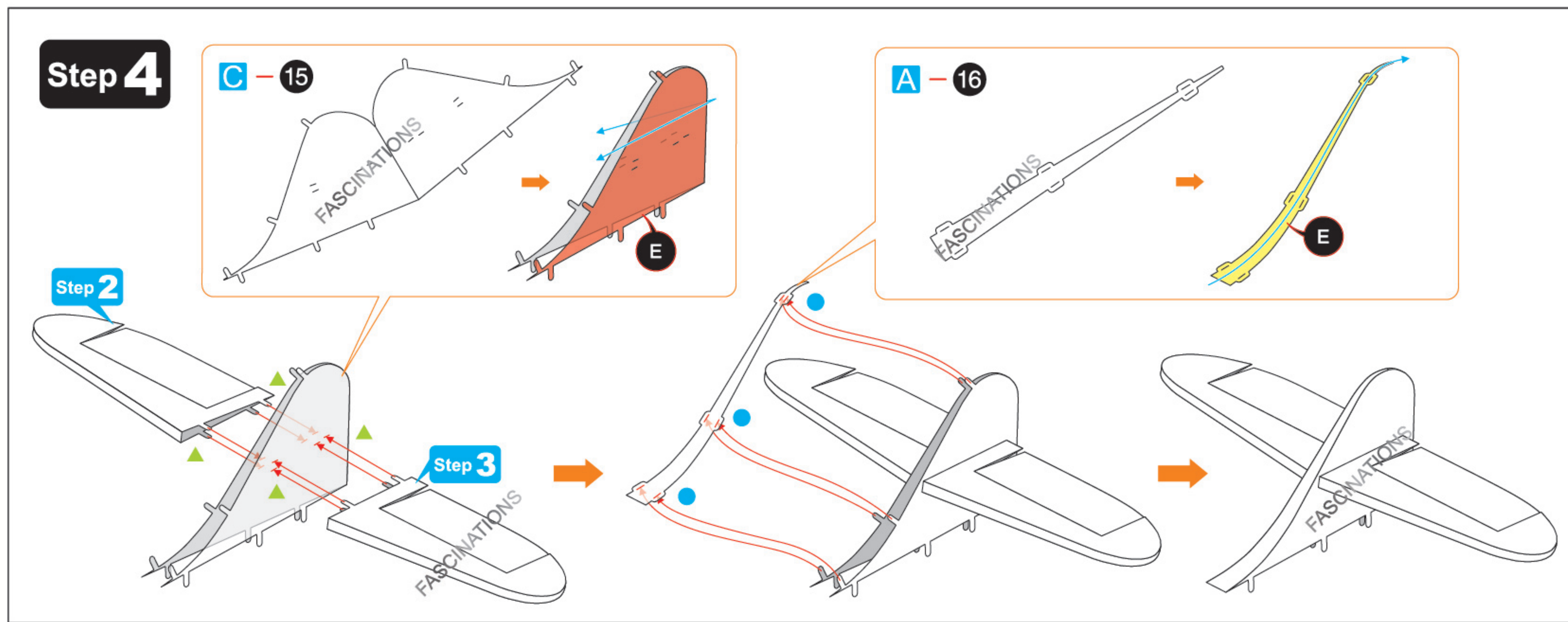
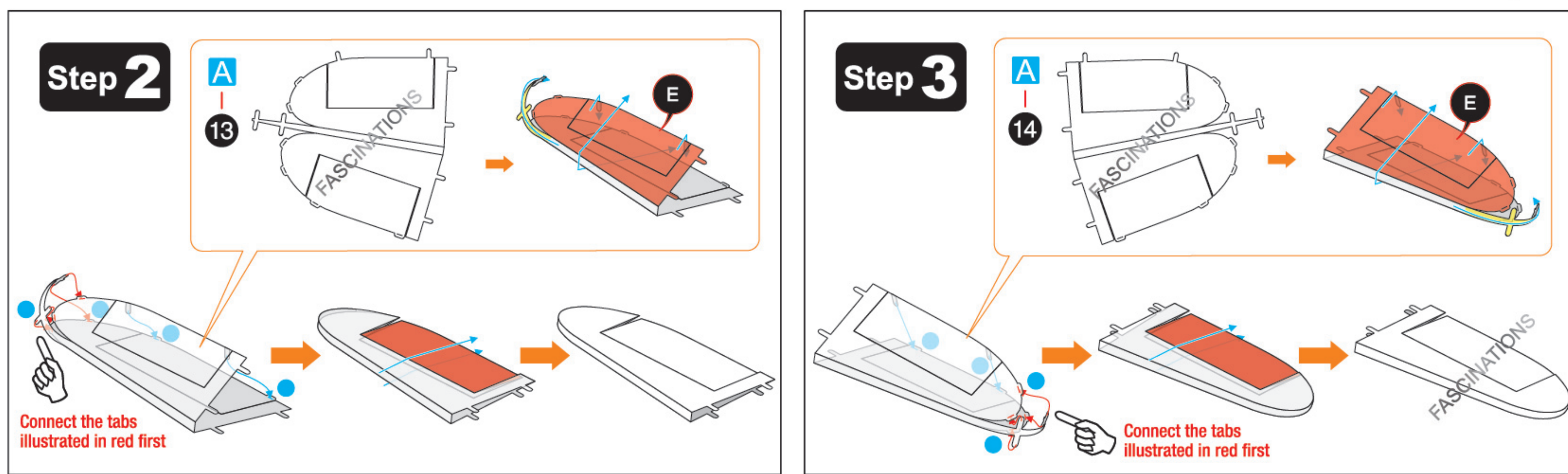
- Tweezers or needle nose pliers: helpful for folding parts, bending and twisting tabs.



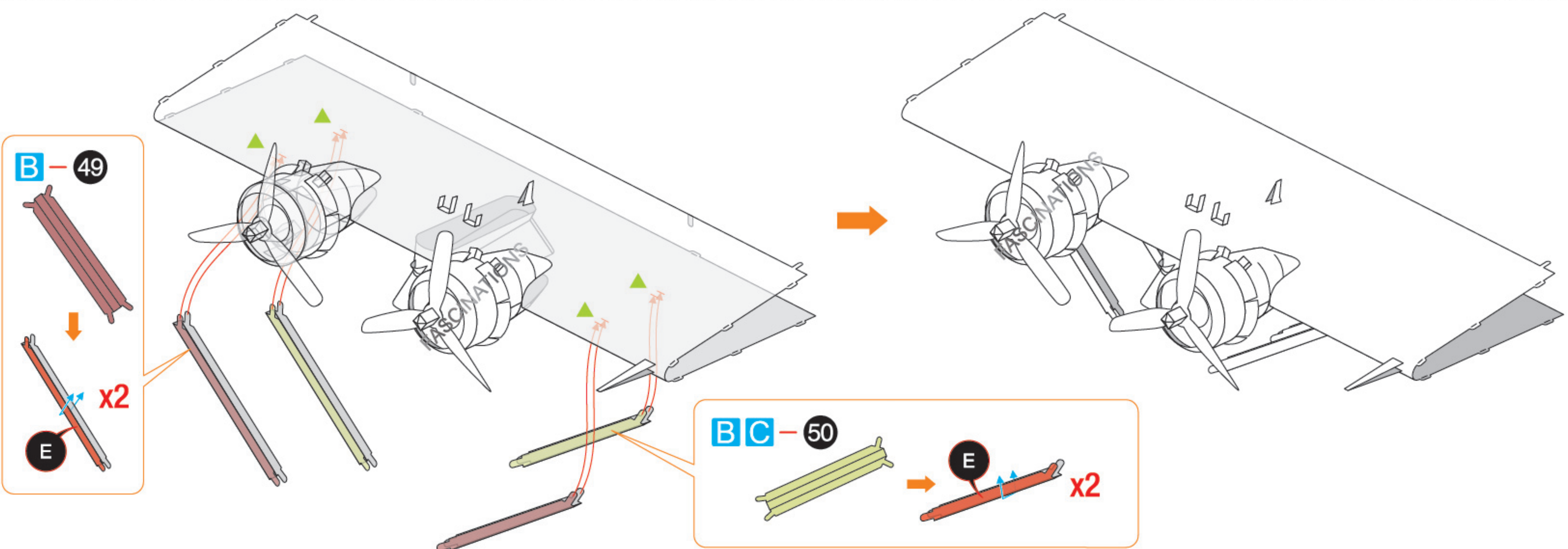
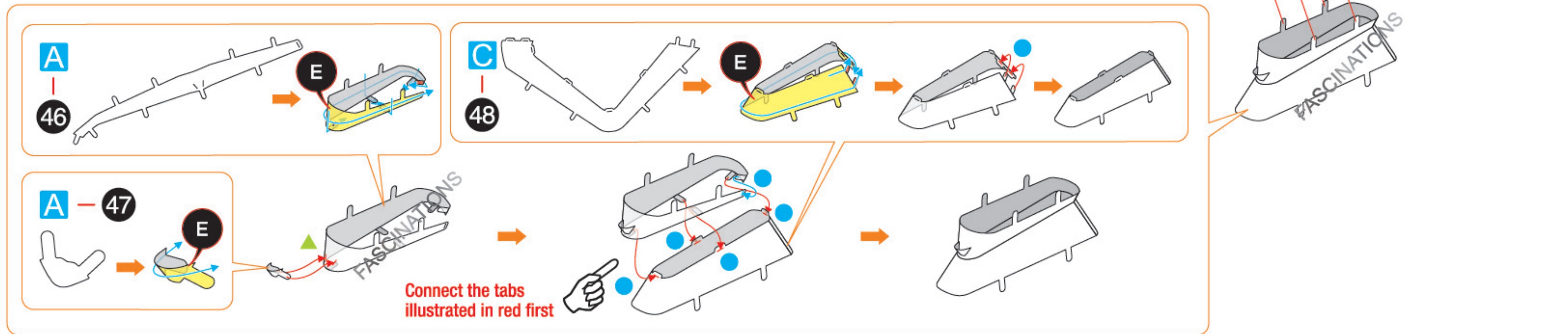
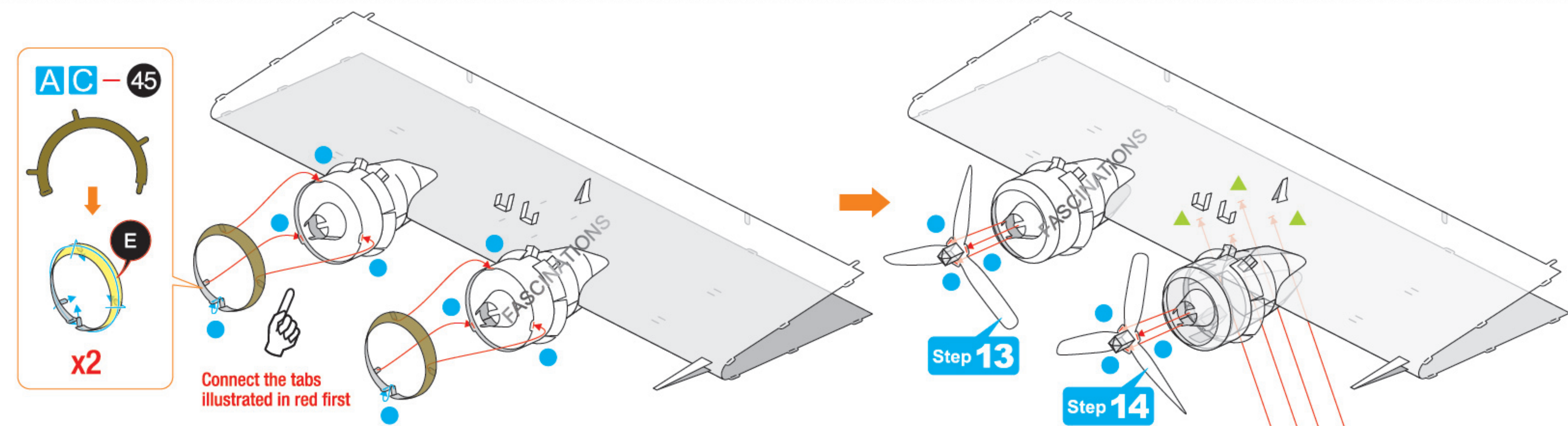
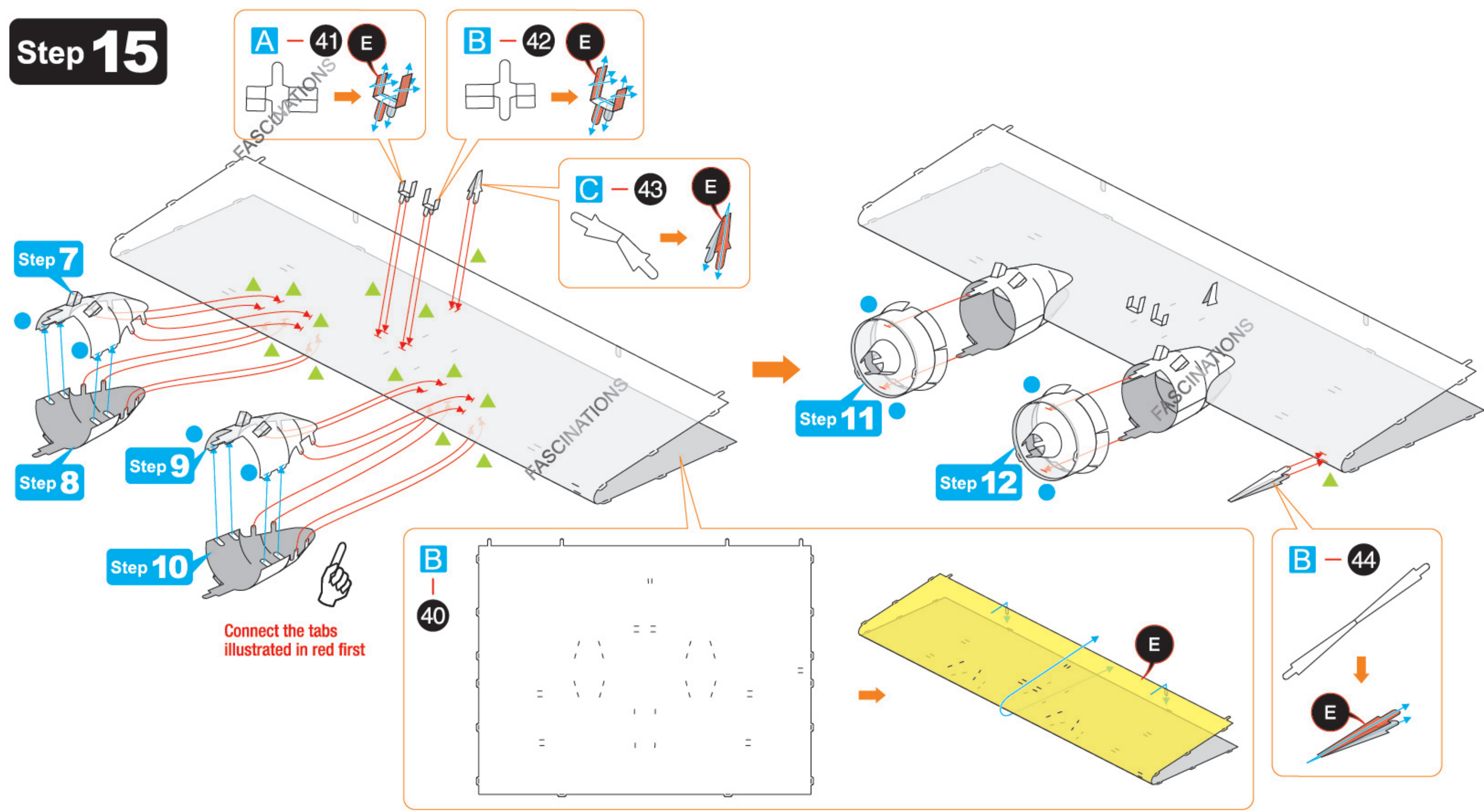
ASSEMBLY FLOW CHART

Step 1

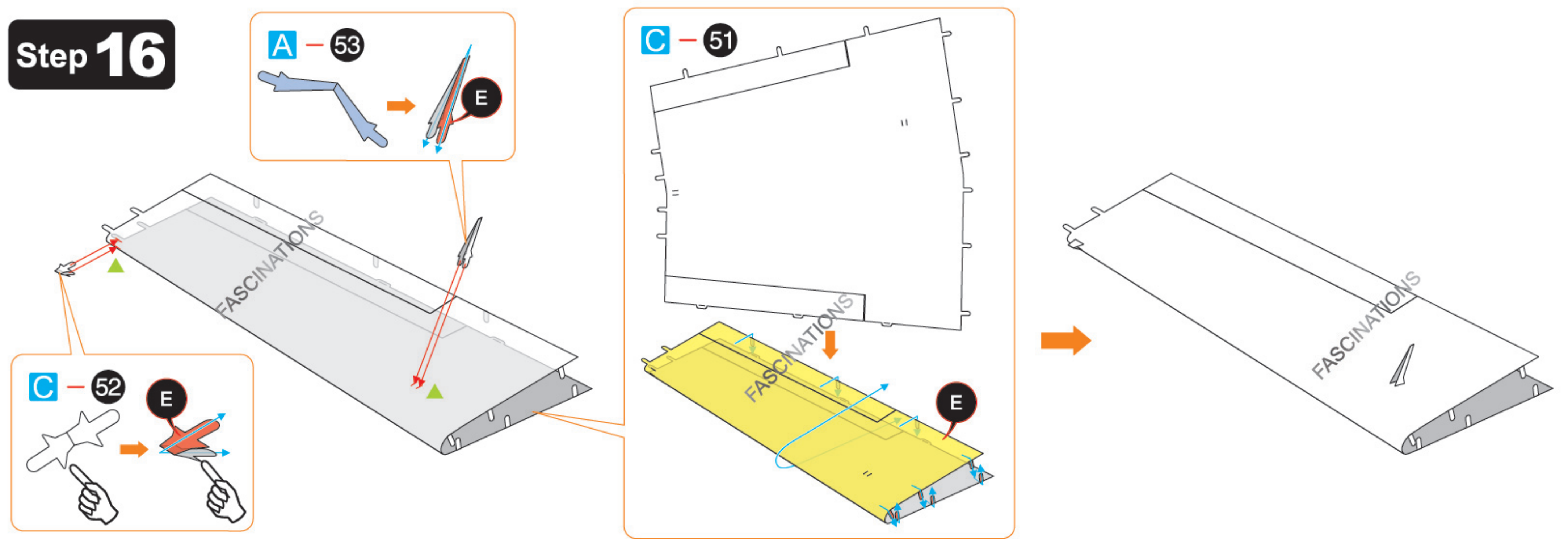




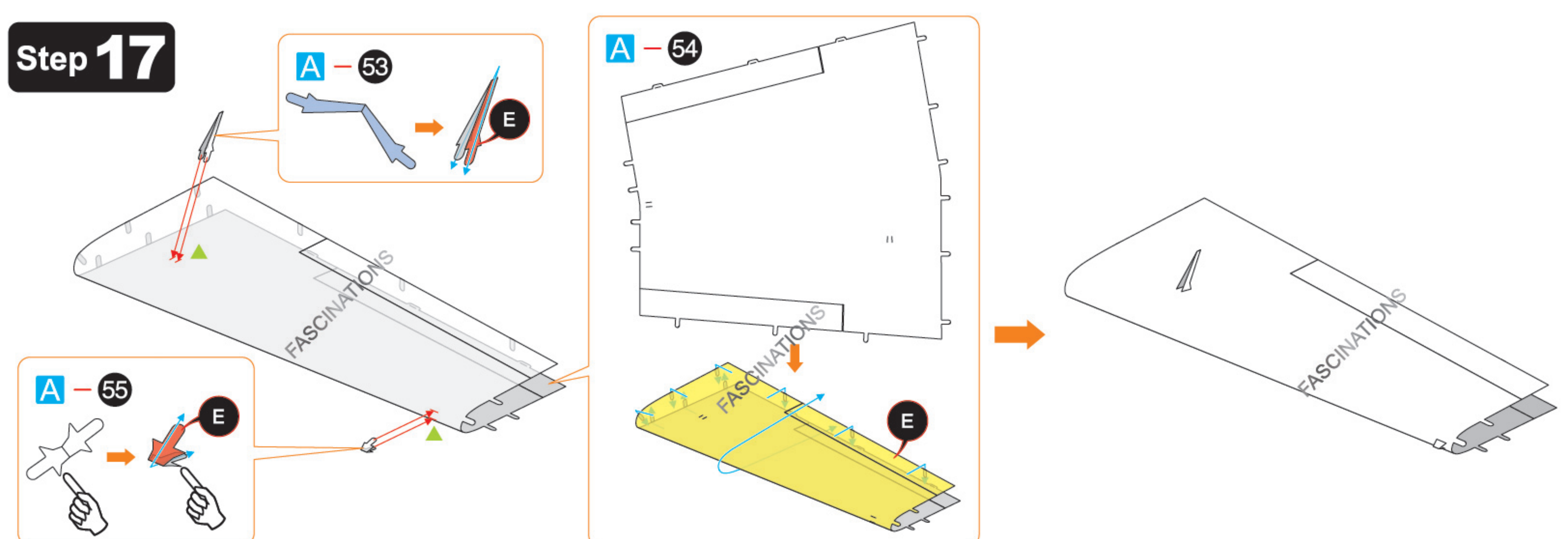
Step 15



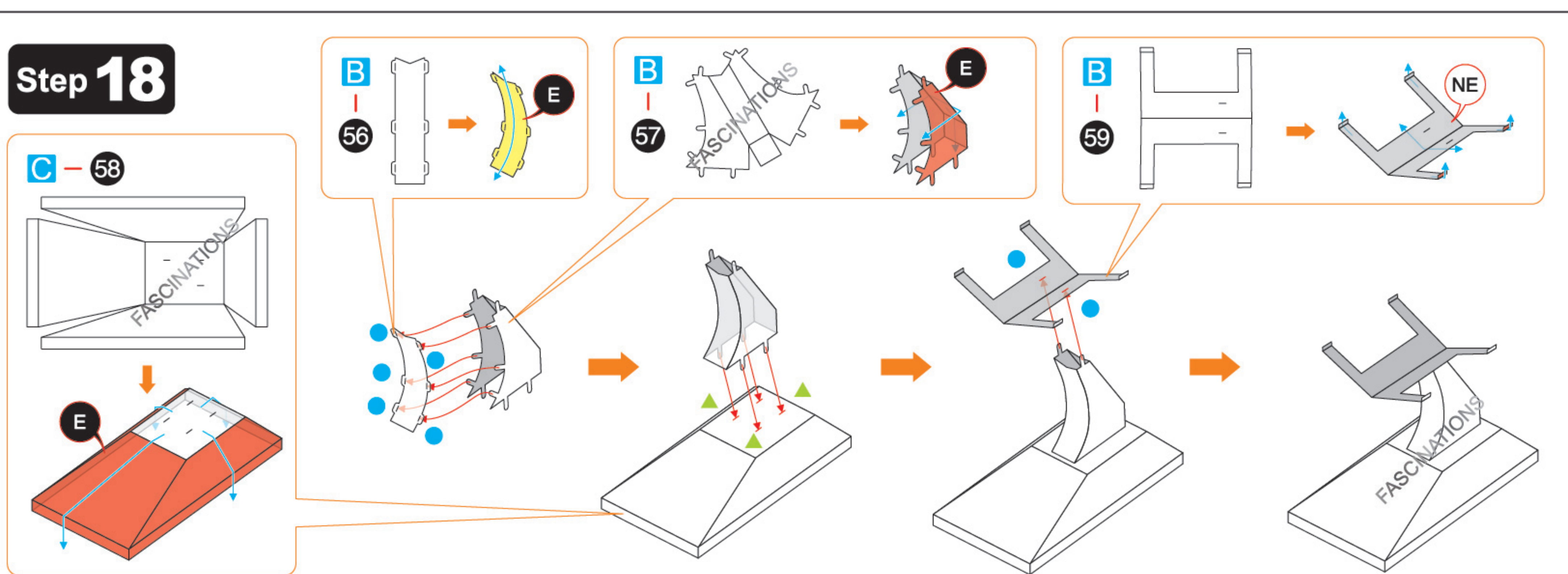
Step 16



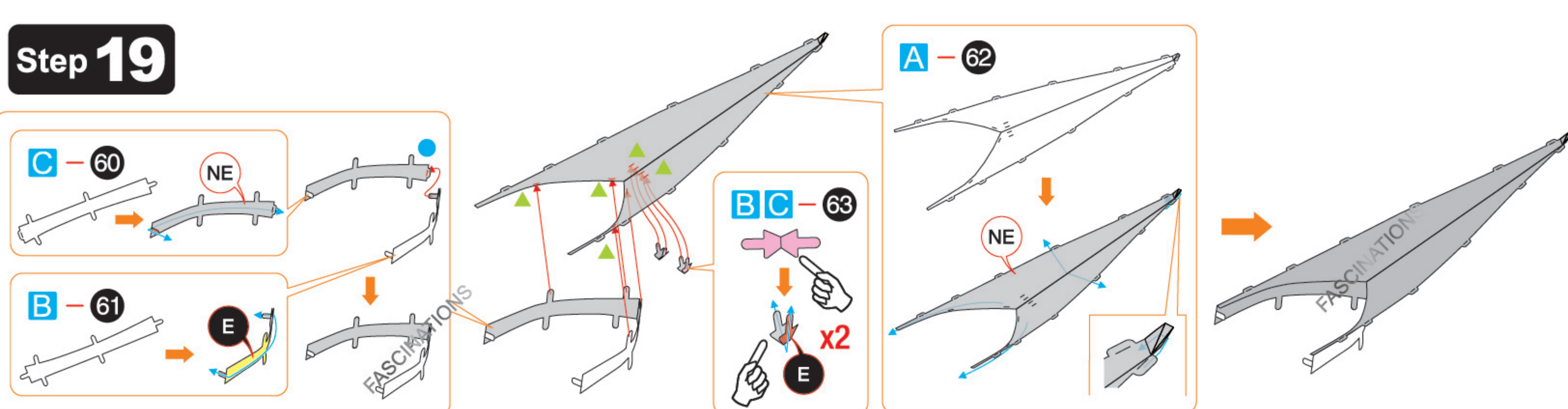
Step 17



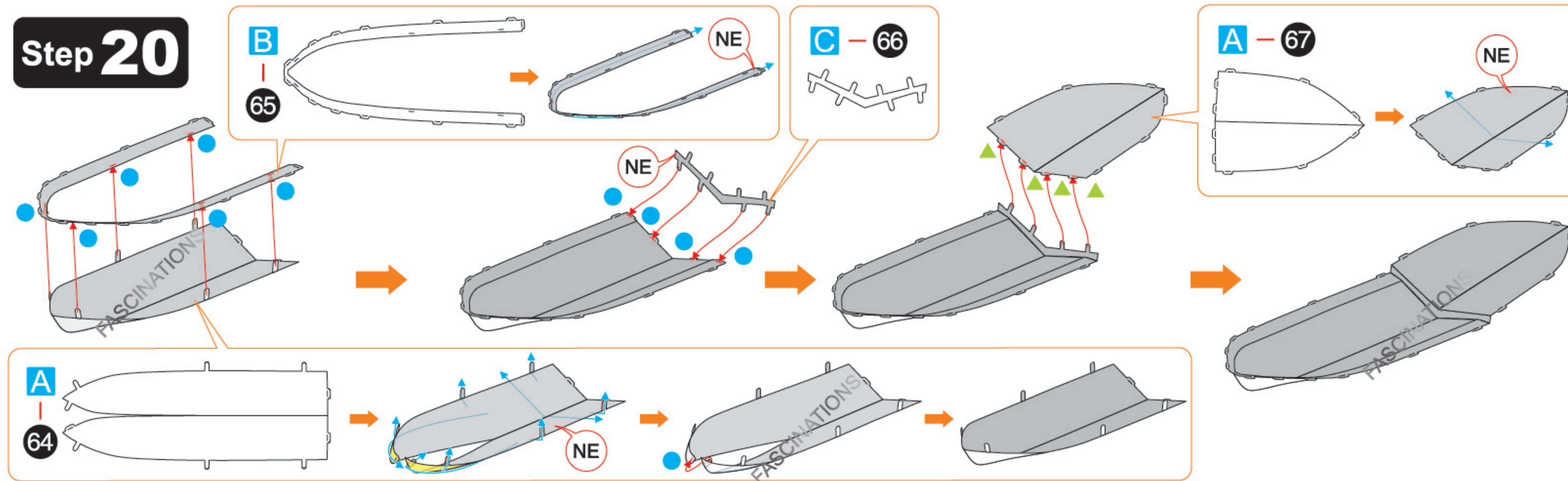
Step 18



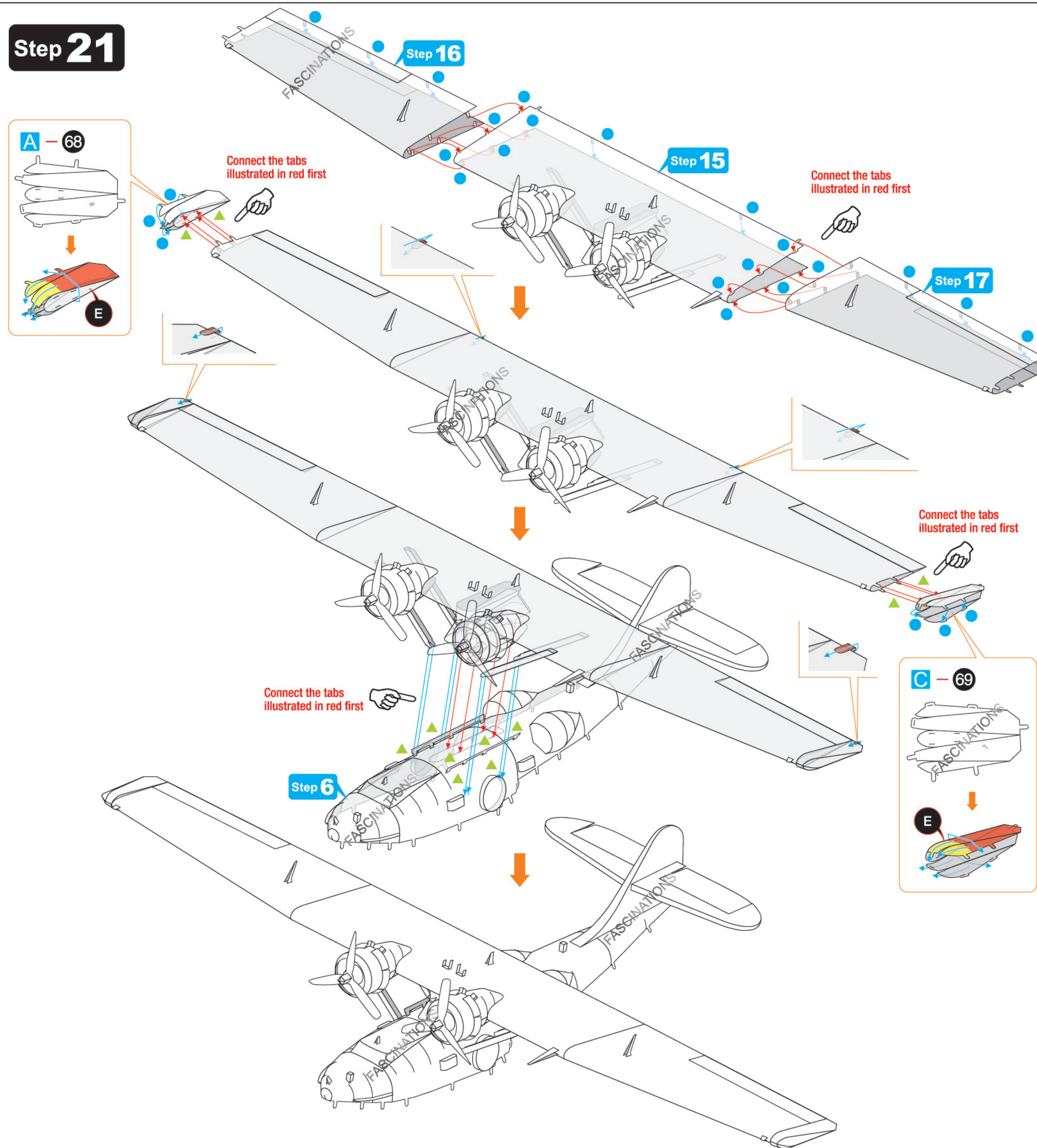
Step 19



Step 20



Step 21



Step 22

