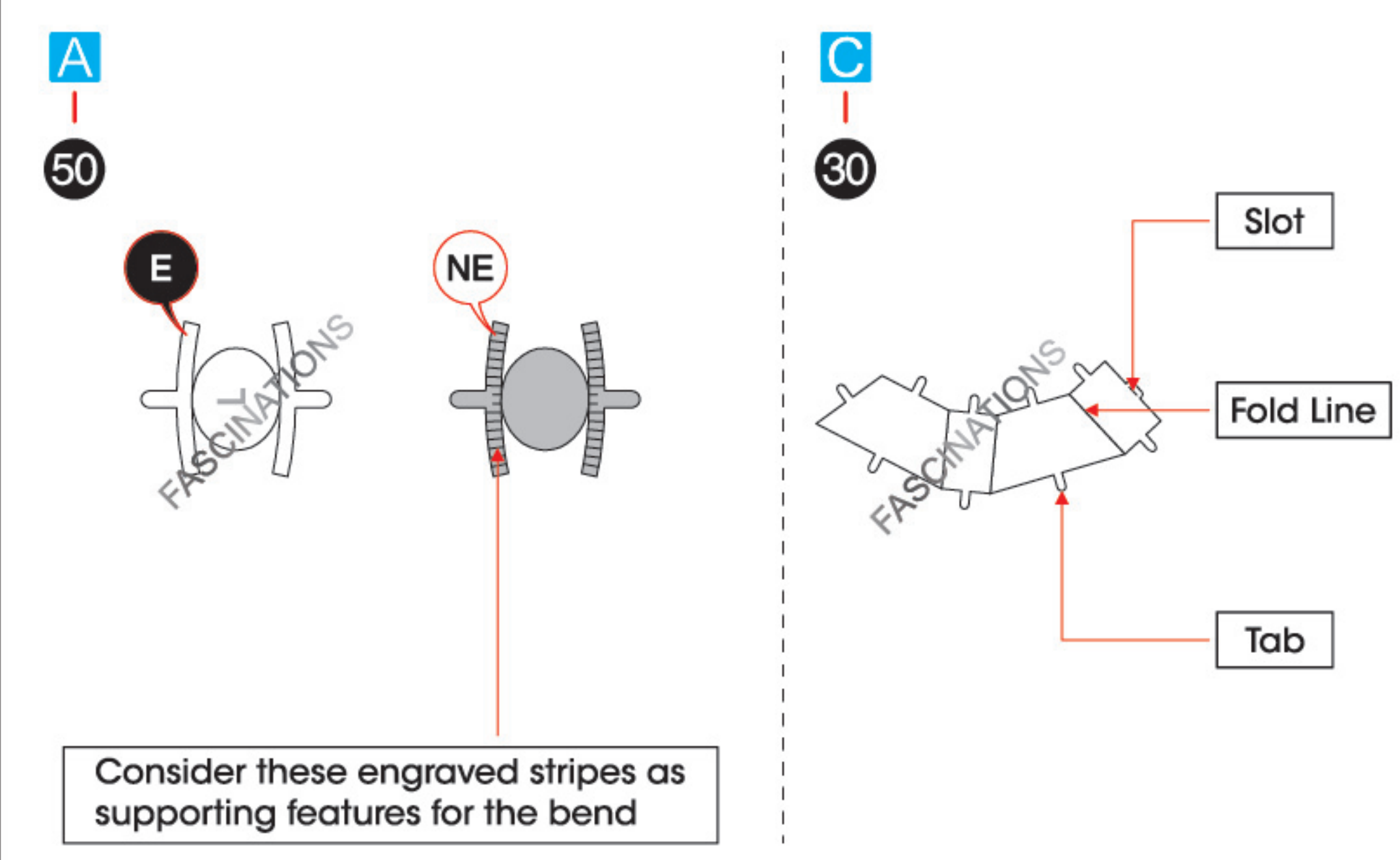


X-34 LANDSPEEDER™
MMS480

It is highly recommended that you visit
www.metal-earth.com/360/MMS480
to see the completed model before assembling your own



TO CREATE THE BEST CONNECTIONS



Legends:

- E** Engraved/ Color side
- NE** Non - engraved/ Silver side
- Attention point
- Insert tab and bend 90 degrees
- Insert tab and twist 90 degrees

Recommended tools:

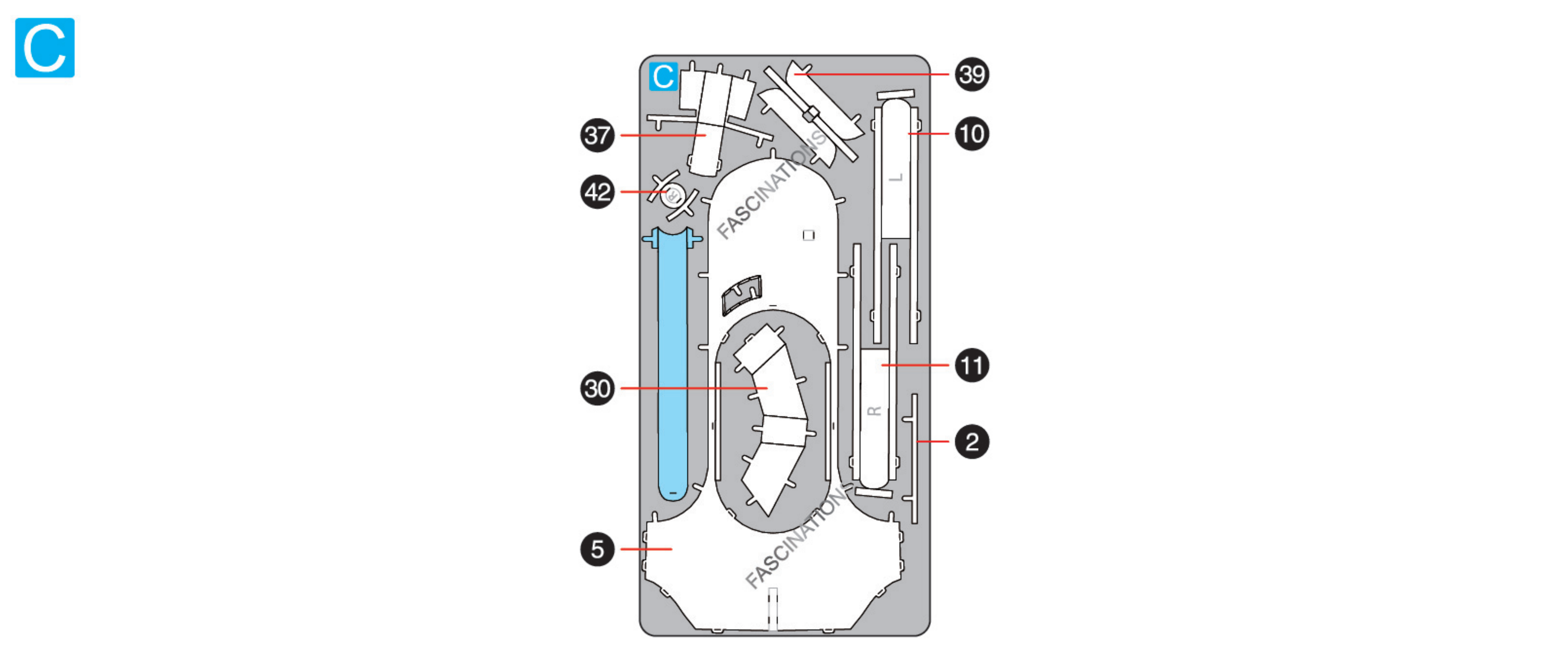
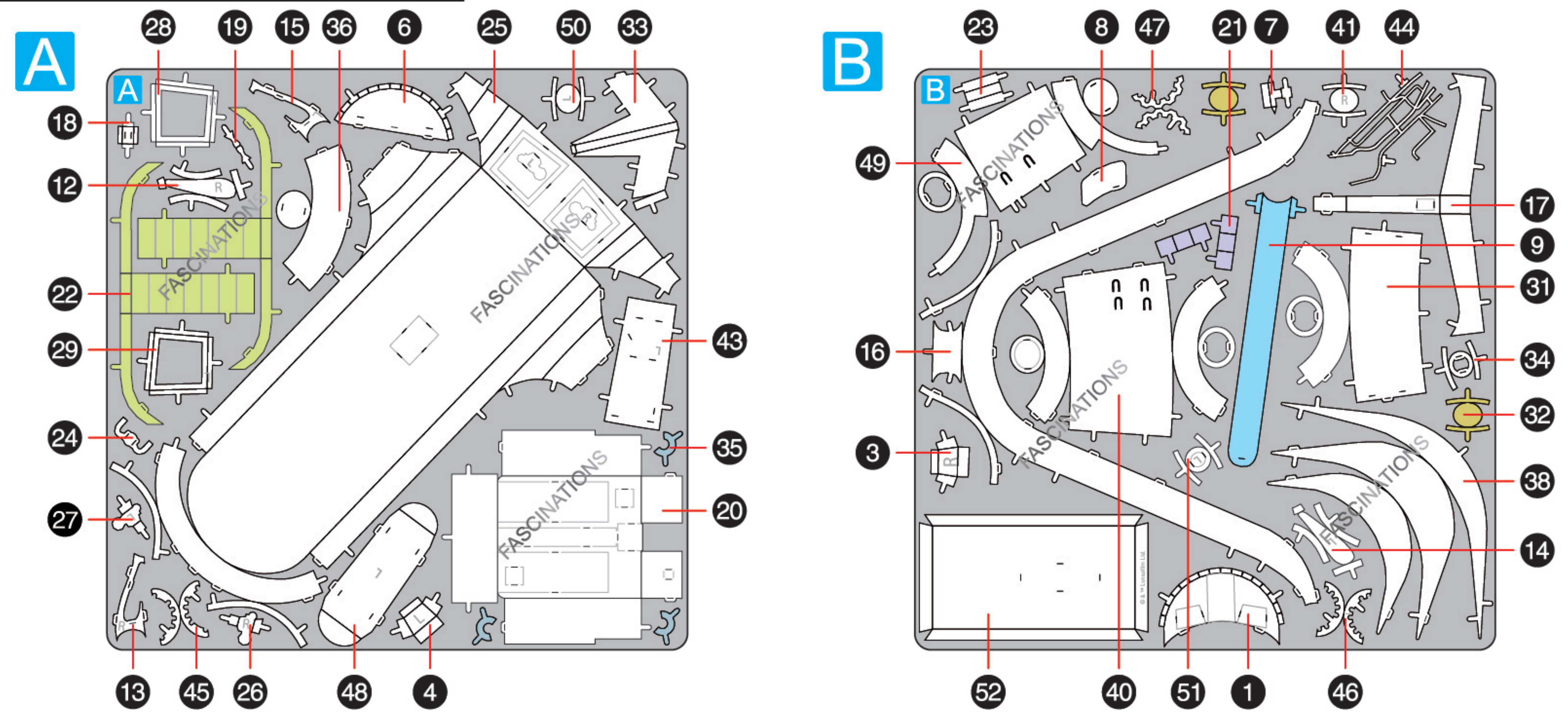
- Wire cutters: helpful for taking parts from the metal sheets.
- Tweezers or needle nose pliers: helpful for folding parts, bending and twisting tabs.

Assembly tip:

If needed, slightly twist tabs to hold parts together then untwist and bend them down for a nice finish.

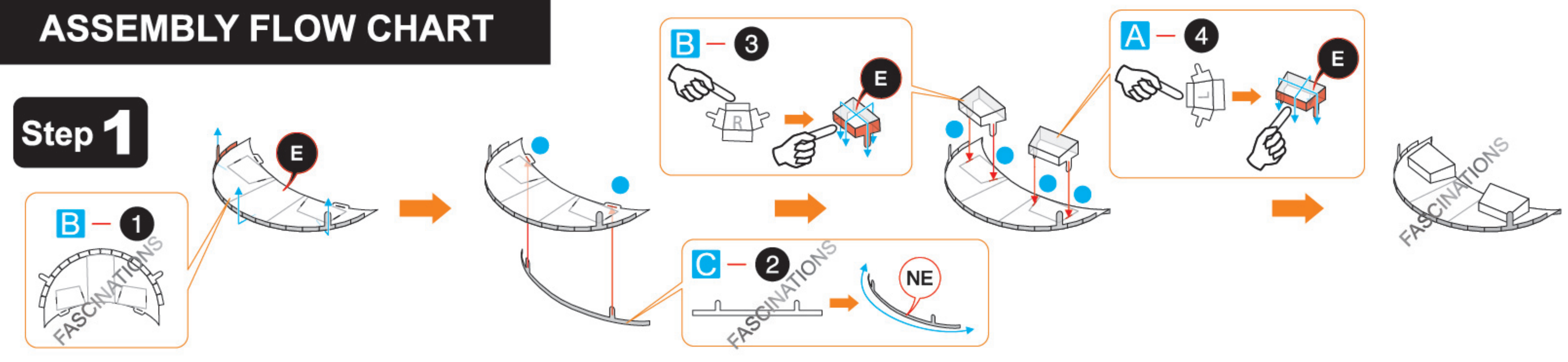
- Yellow areas should be curled
- Red areas should be folded

METAL SHEETS

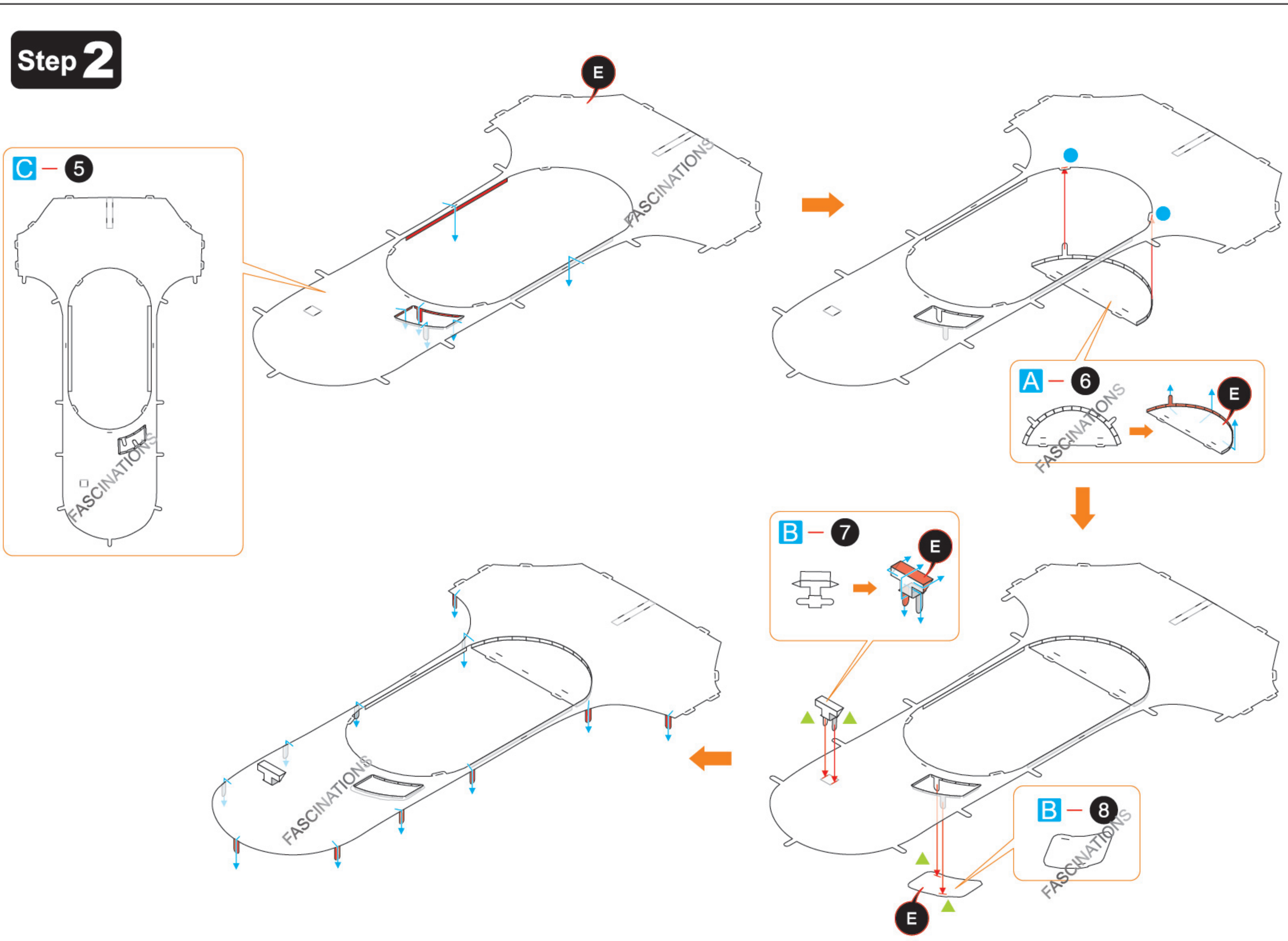


ASSEMBLY FLOW CHART

Step 1

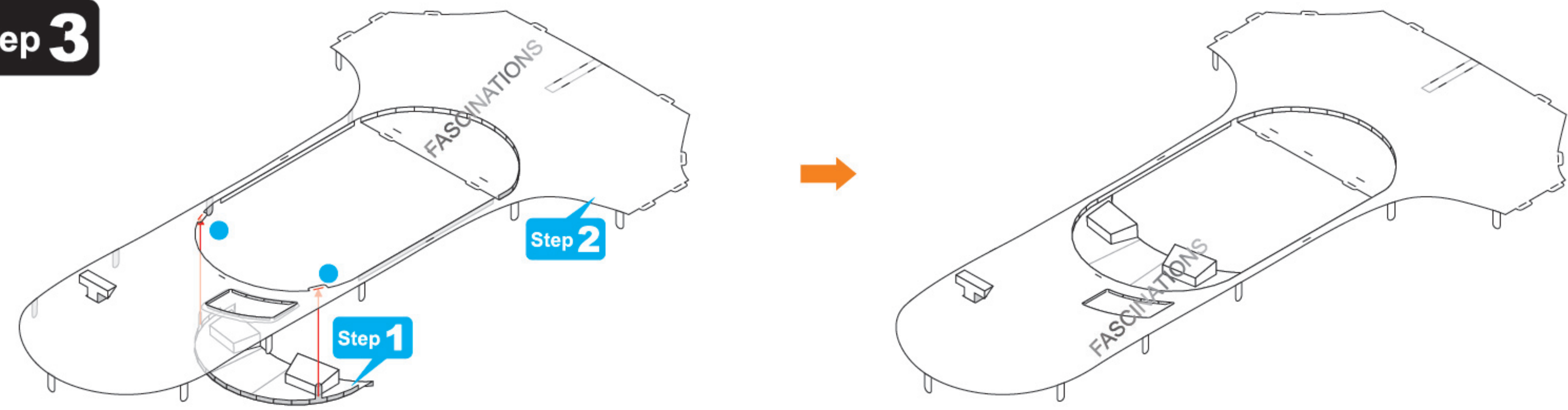


Step 2

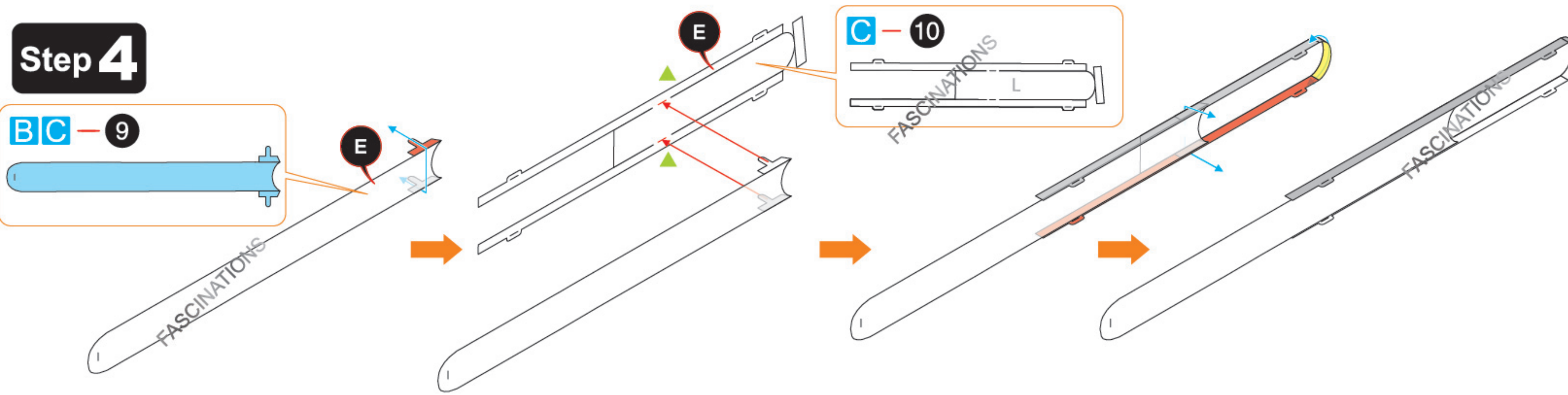


In order to avoid possible injury from sharp edges, please carefully discard the metal sheets after parts have been removed.

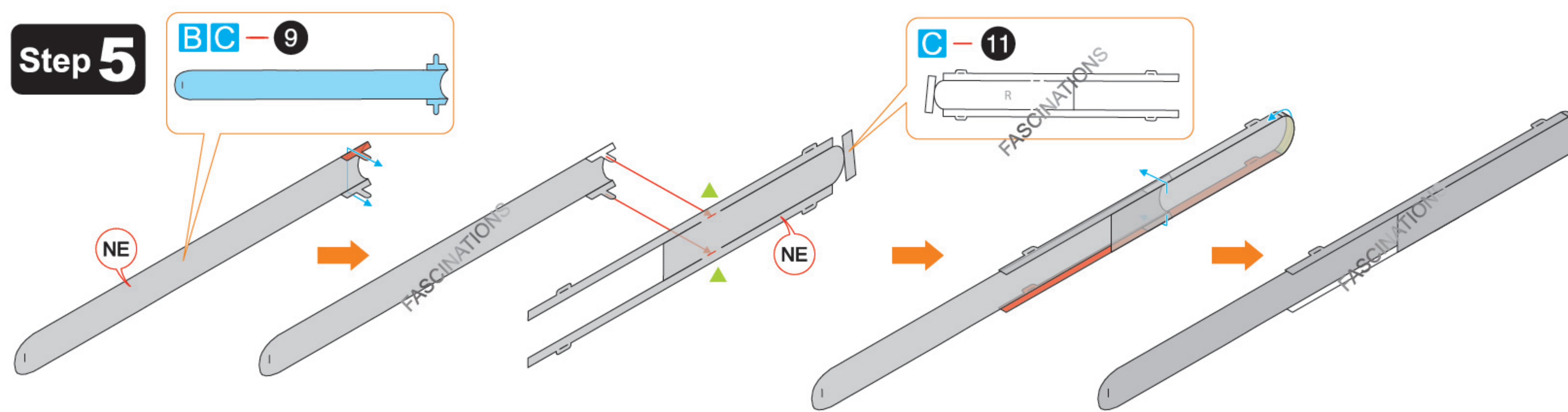
Step 3



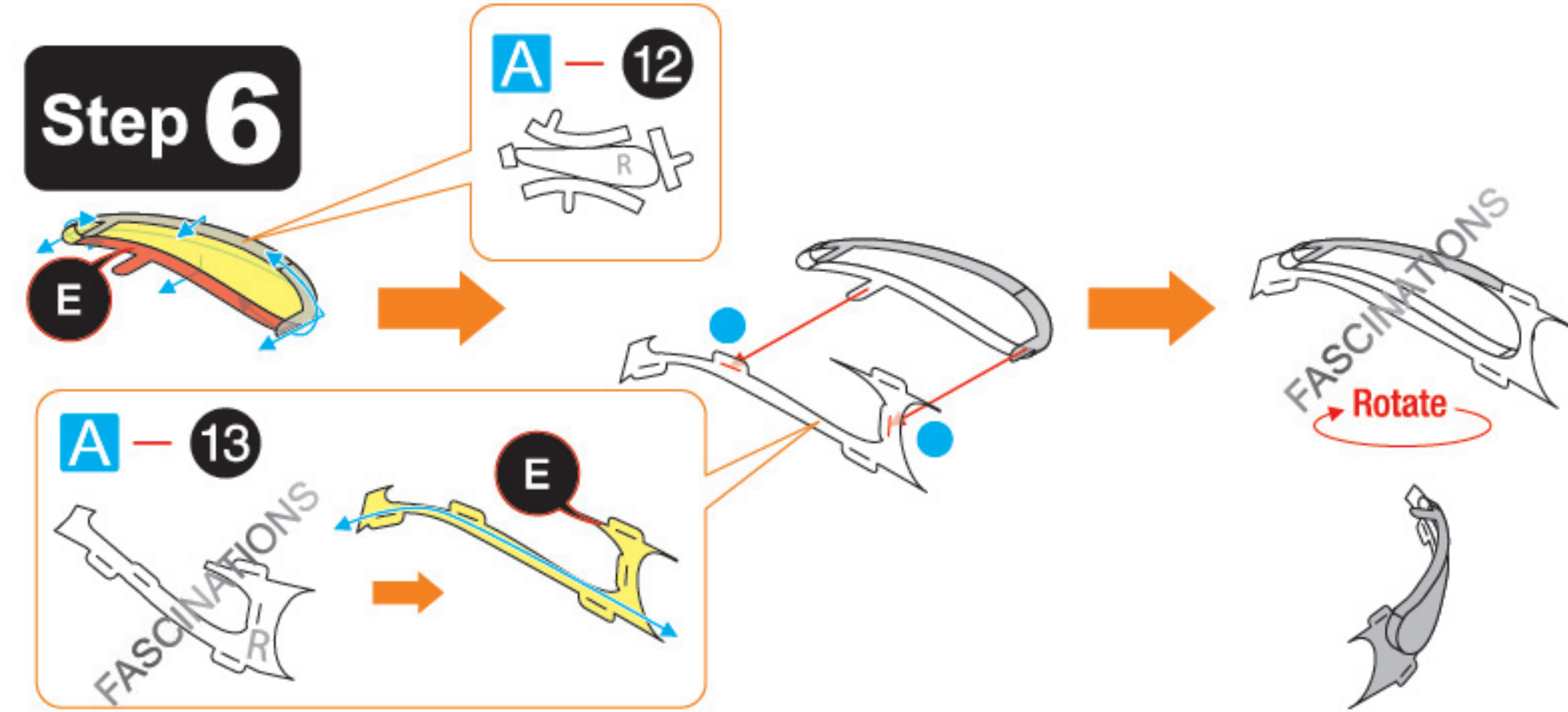
Step 4



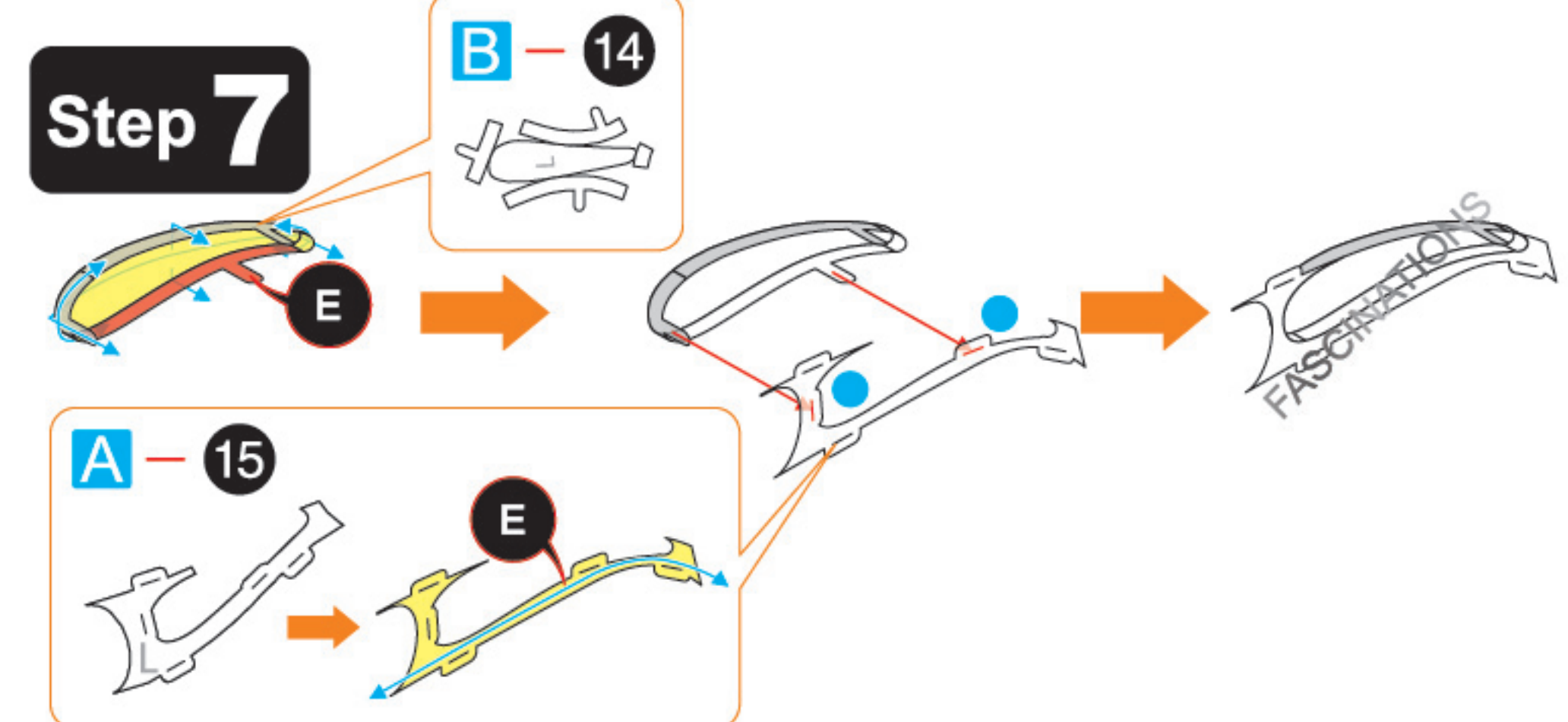
Step 5



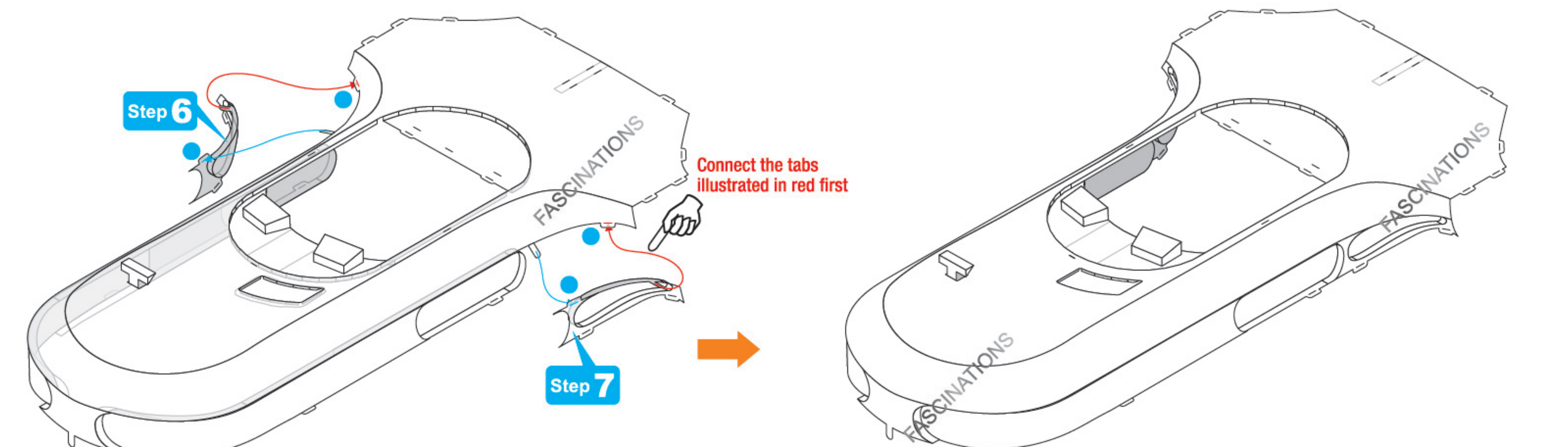
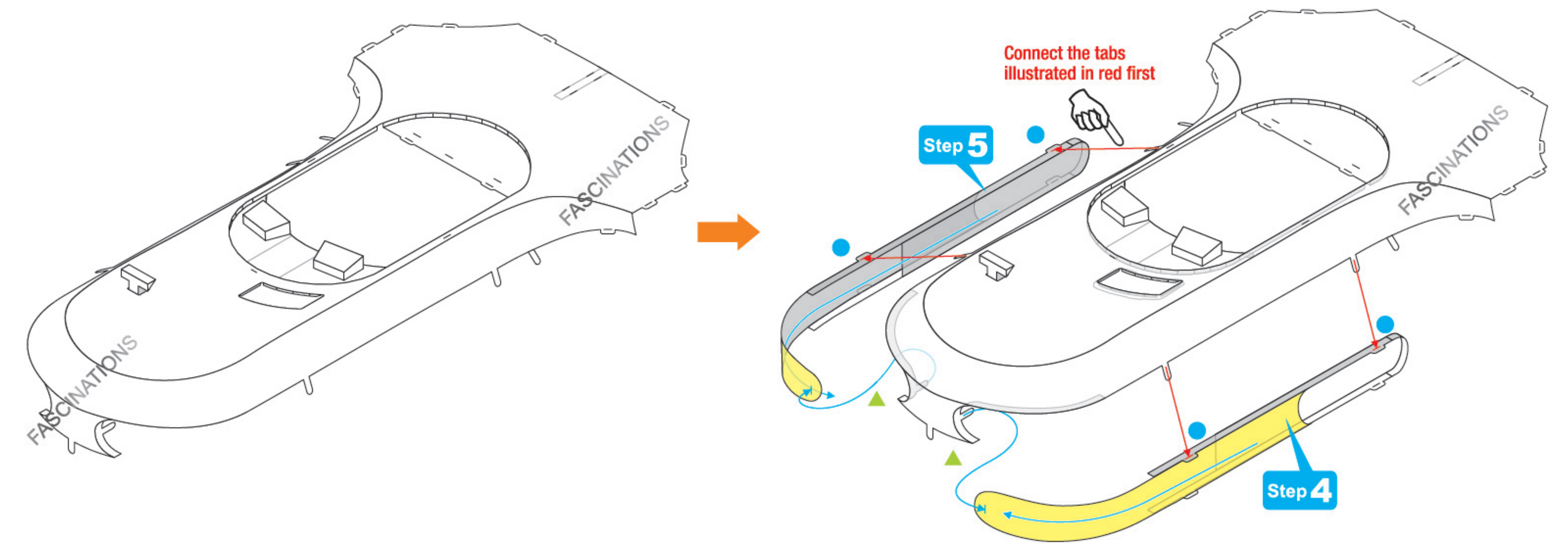
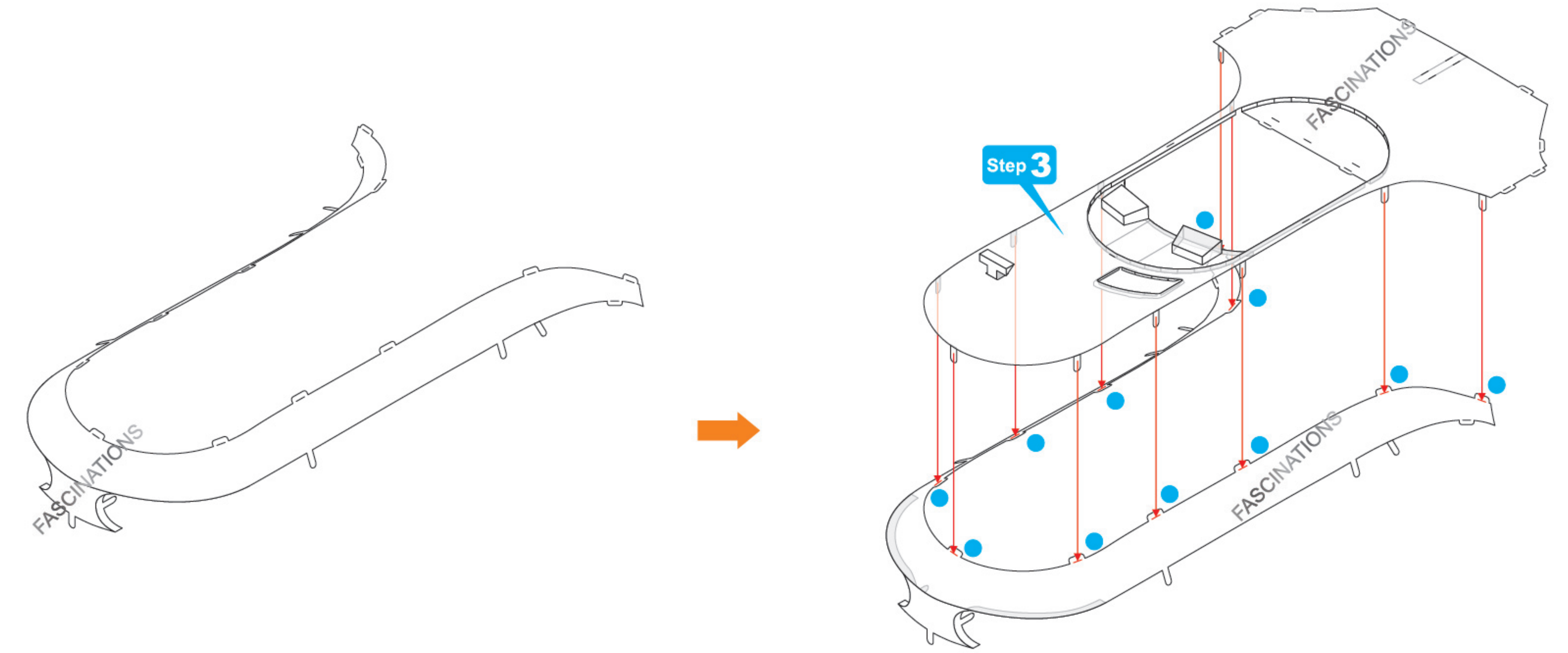
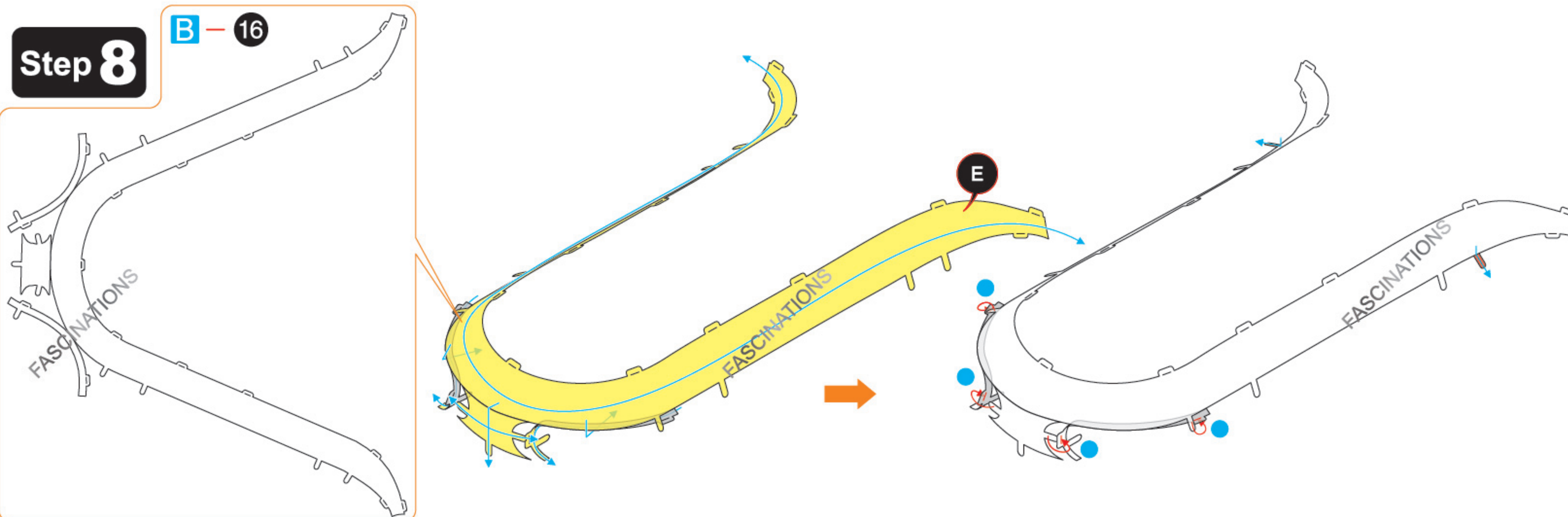
Step 6



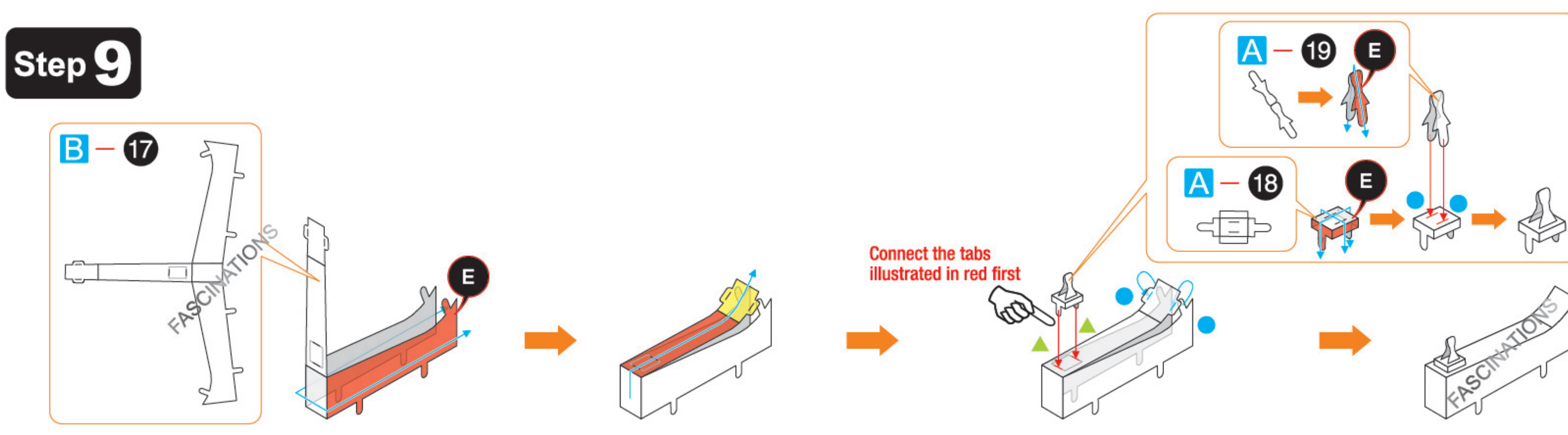
Step 7



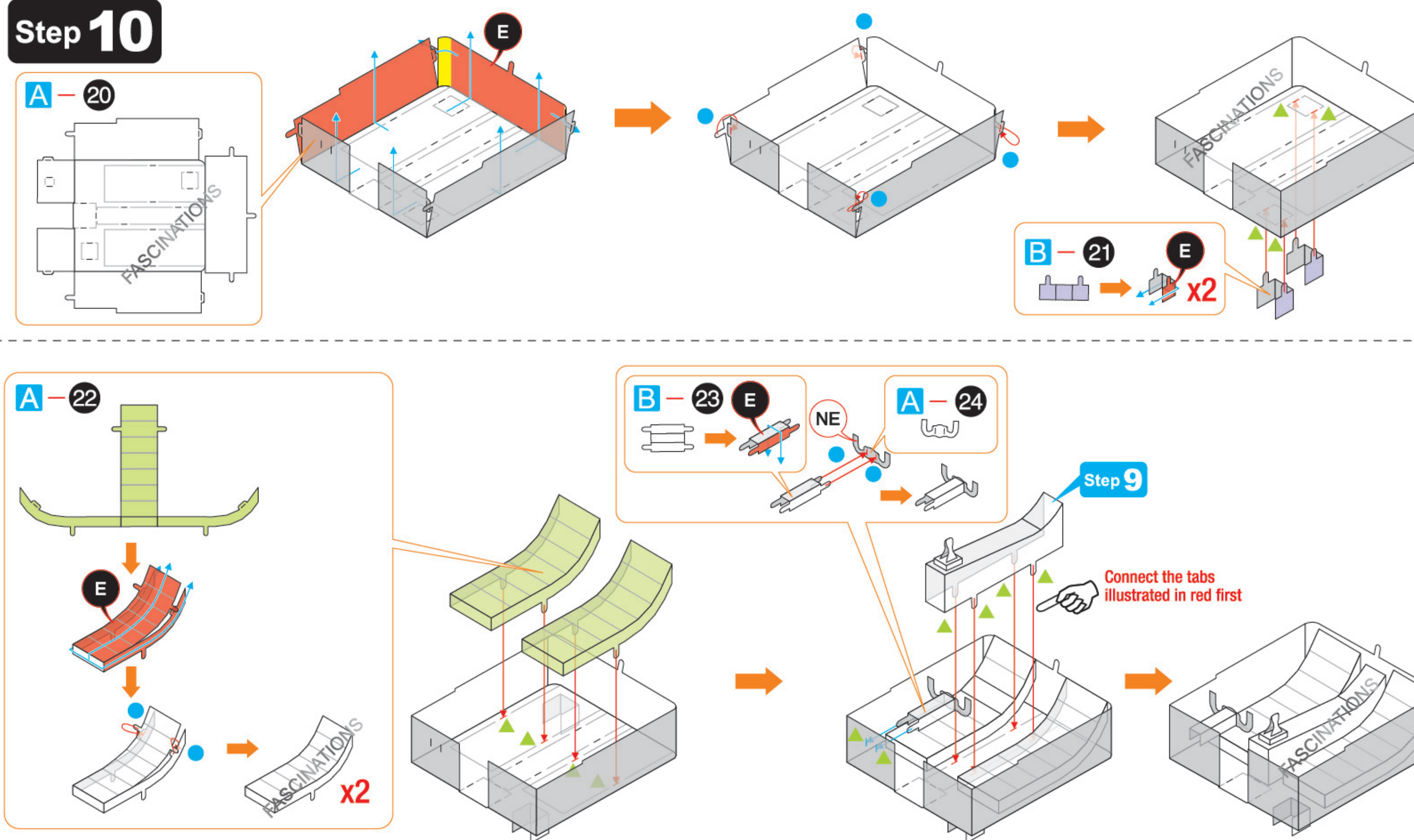
Step 8



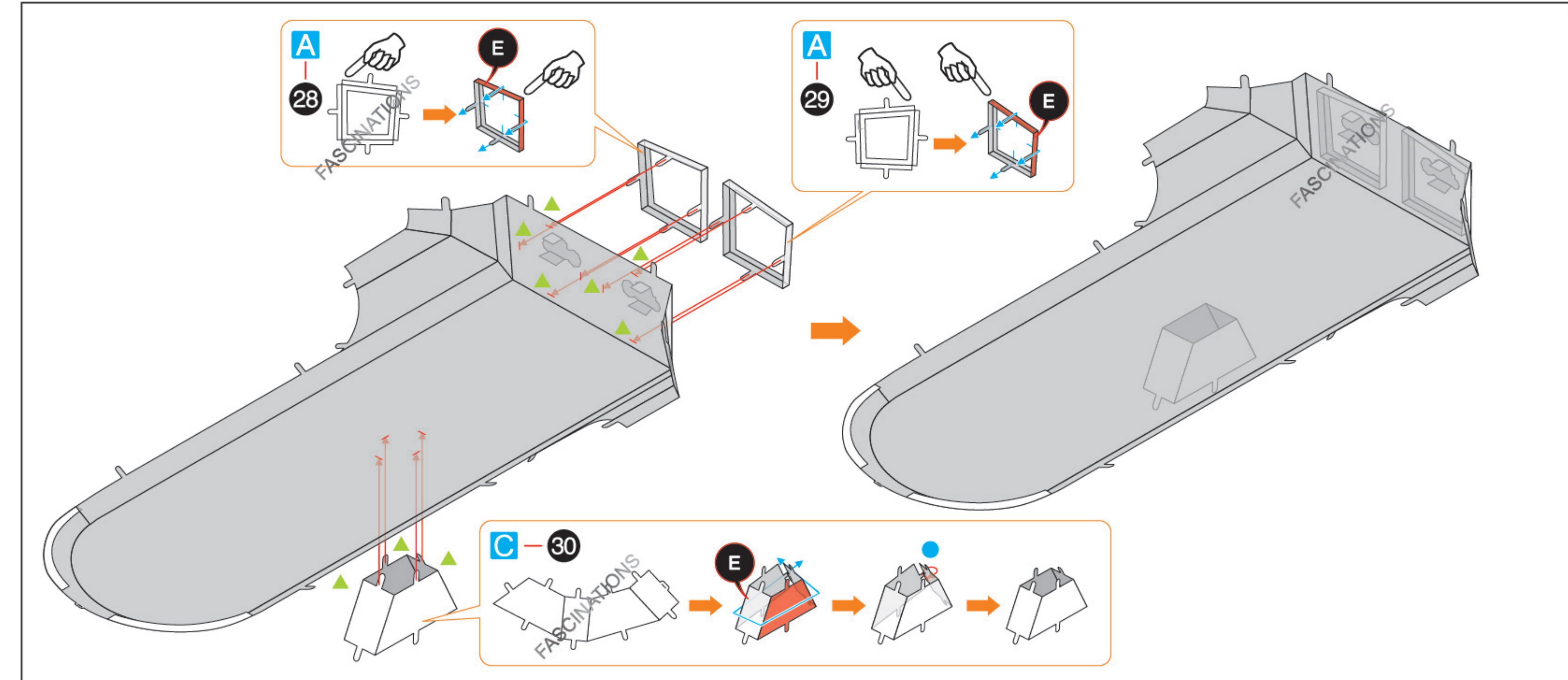
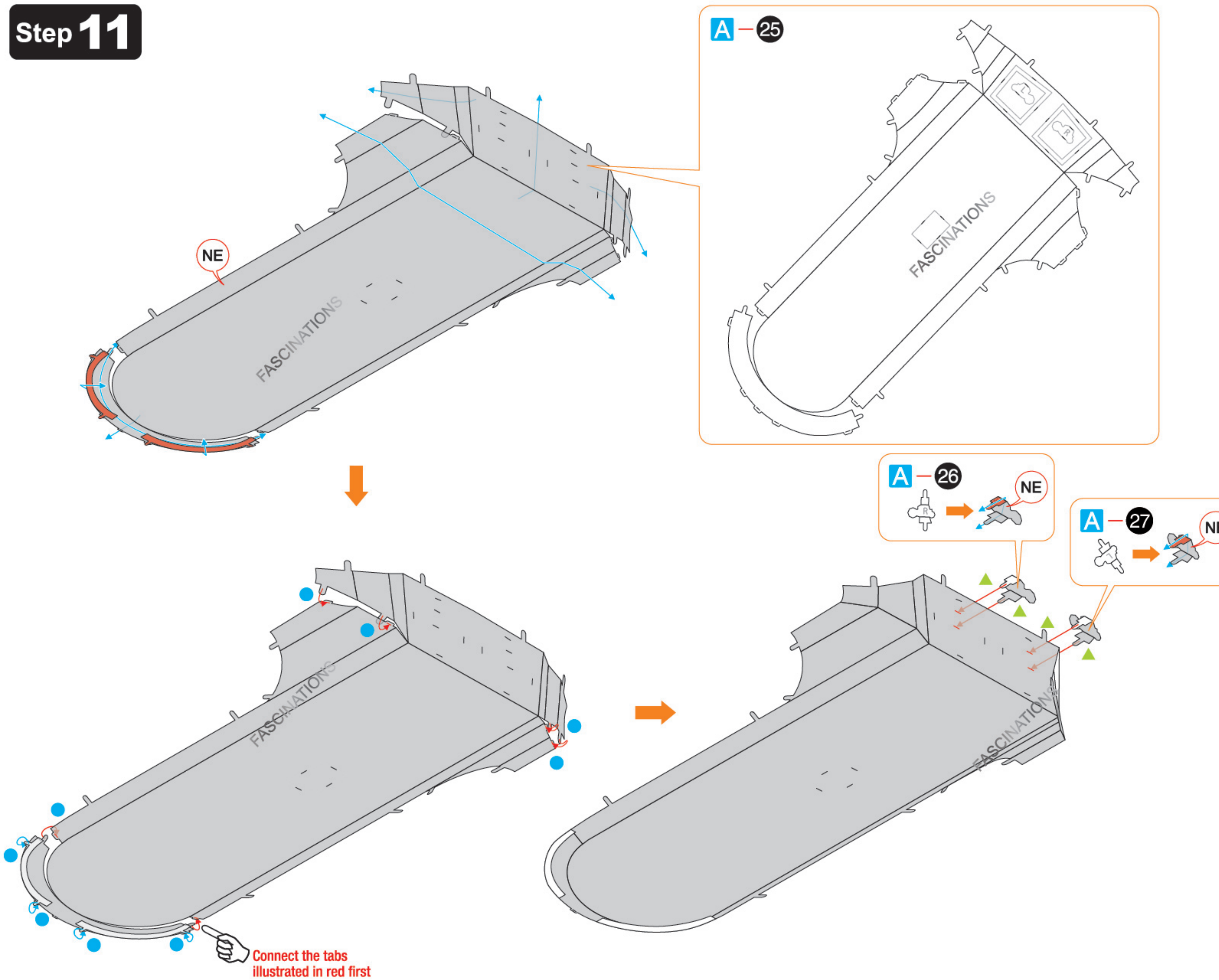
Step 9



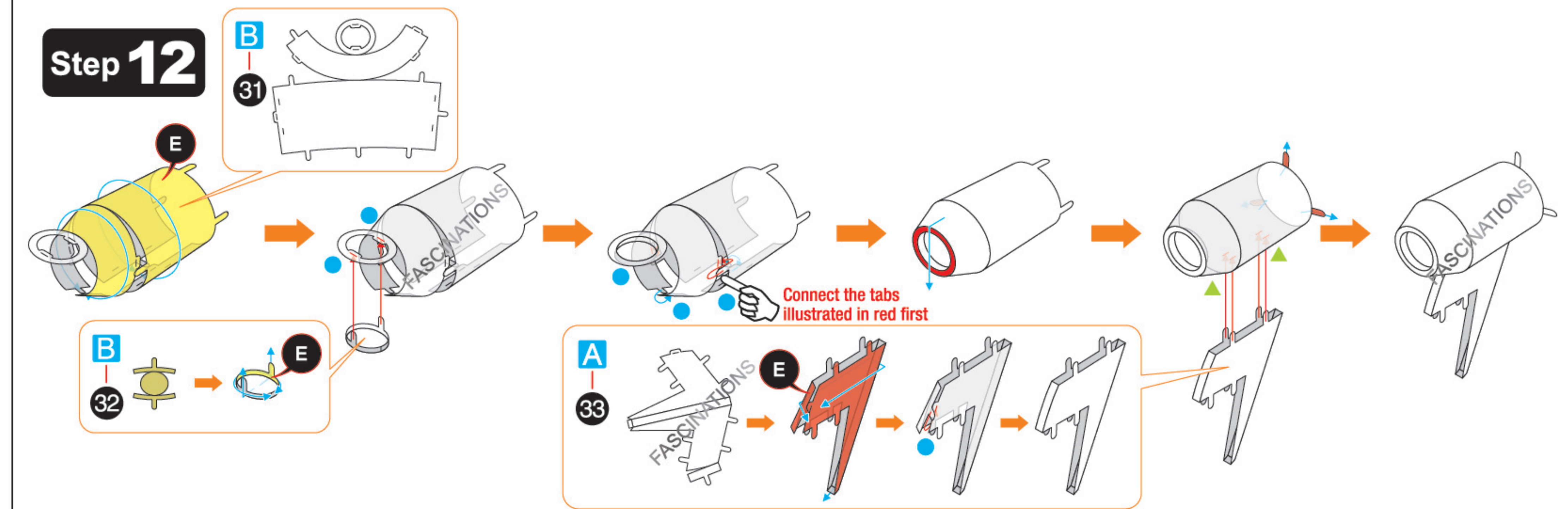
Step 10



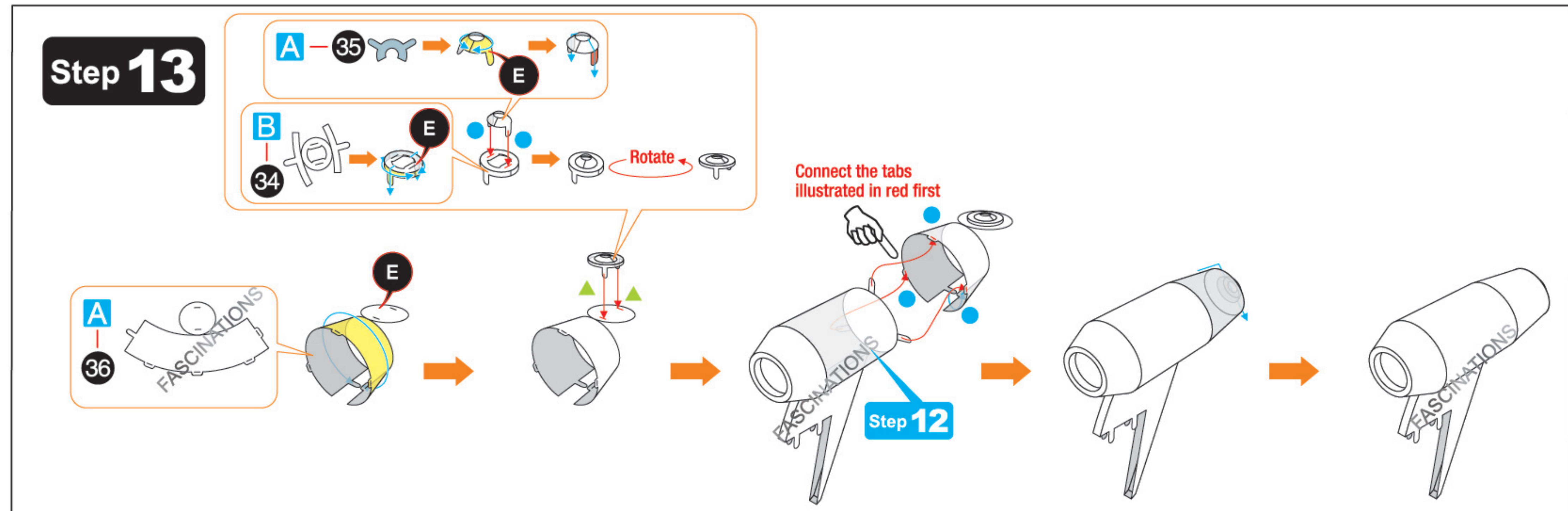
Step 11



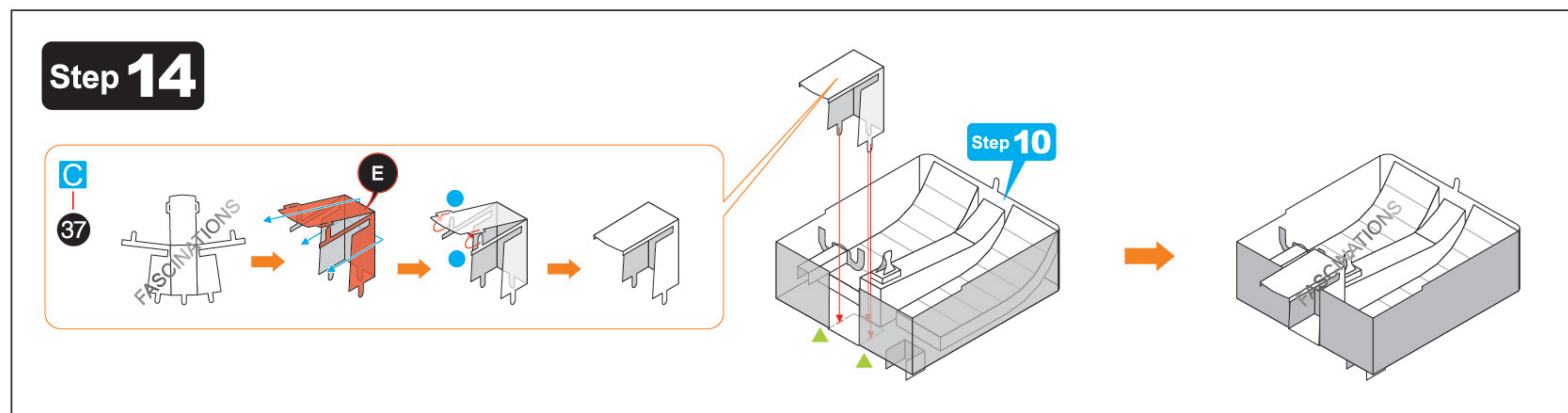
Step 12



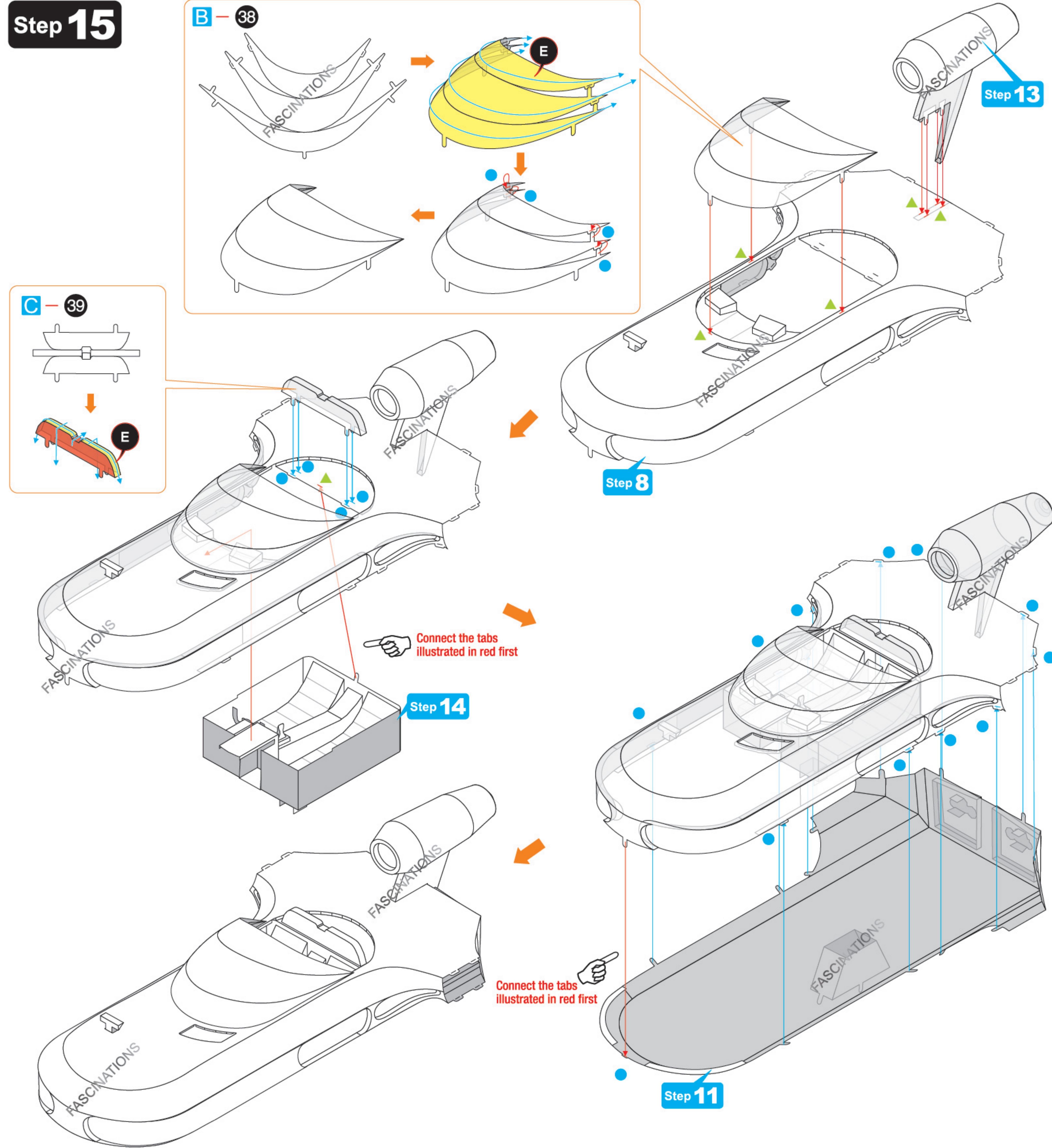
Step 13



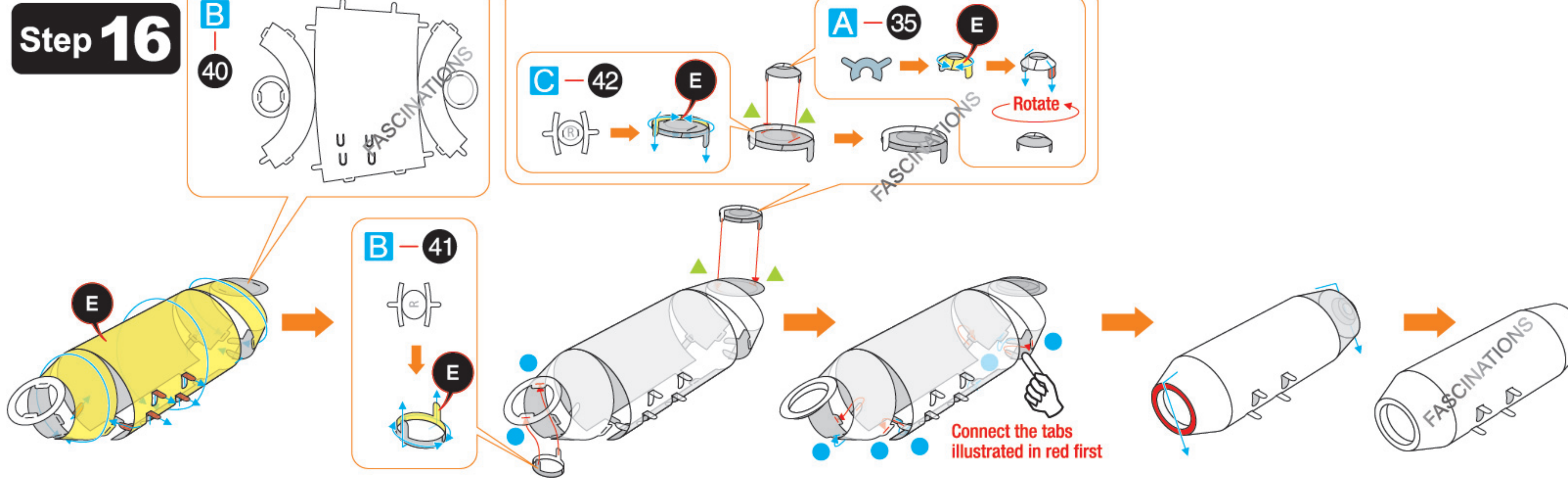
Step 14



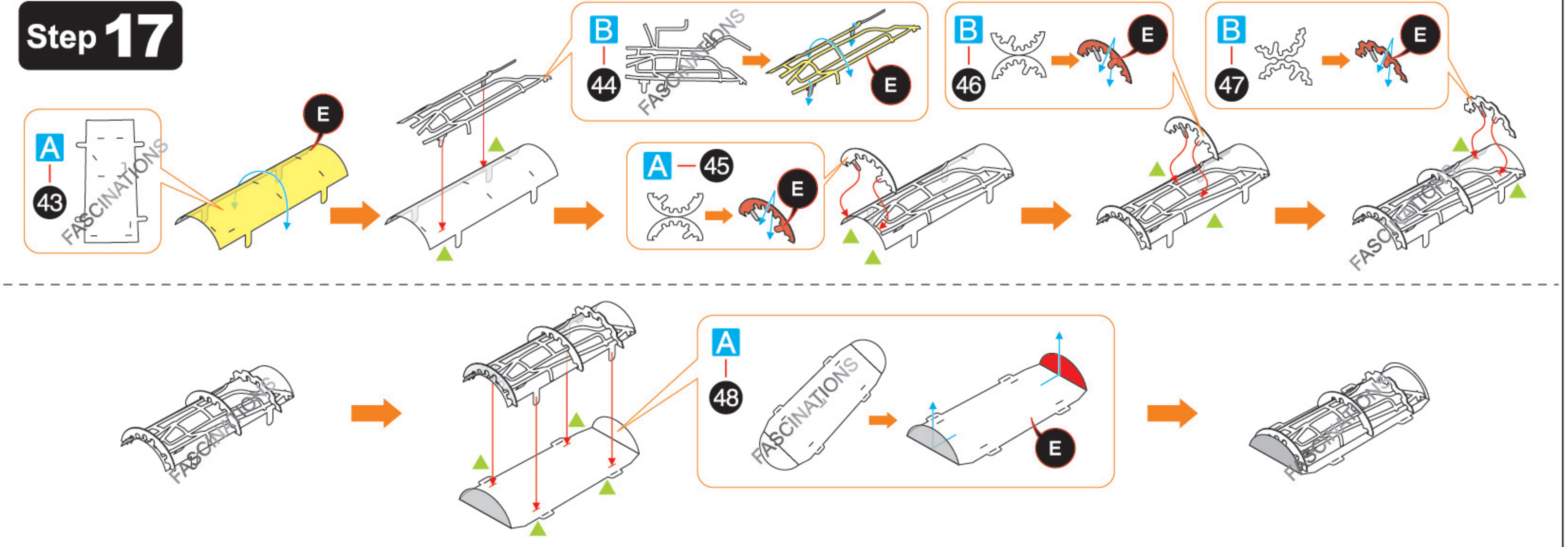
Step 15



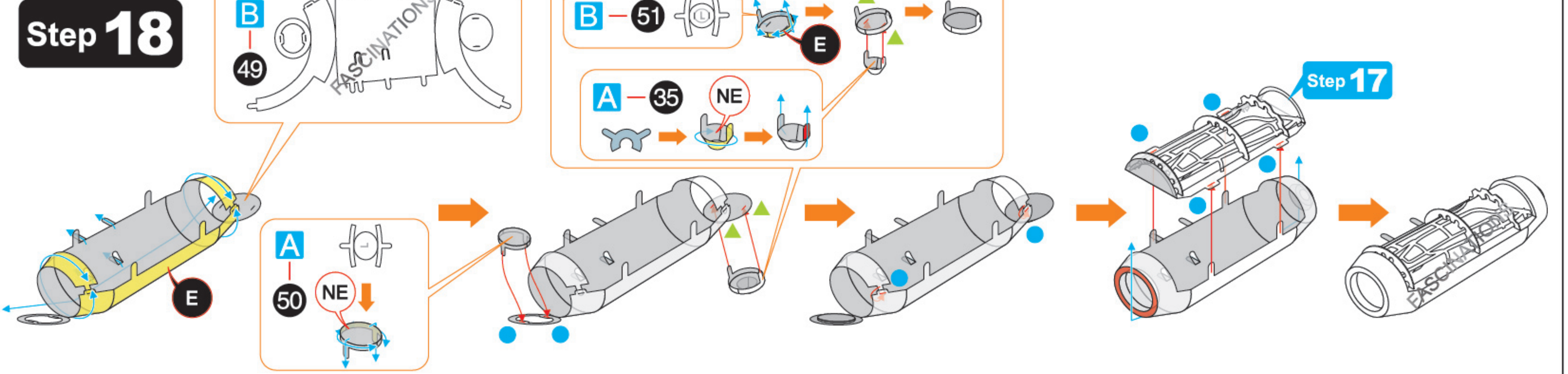
Step 16



Step 17



Step 18



Step 19

