

F-22[®] RAPTOR[®]
ME1016

It is highly recommended that you visit www.metalearth.com/360/ME1016 to see the completed model before assembling your own



METAL SHEETS

Parts with same color are duplicates

A

B

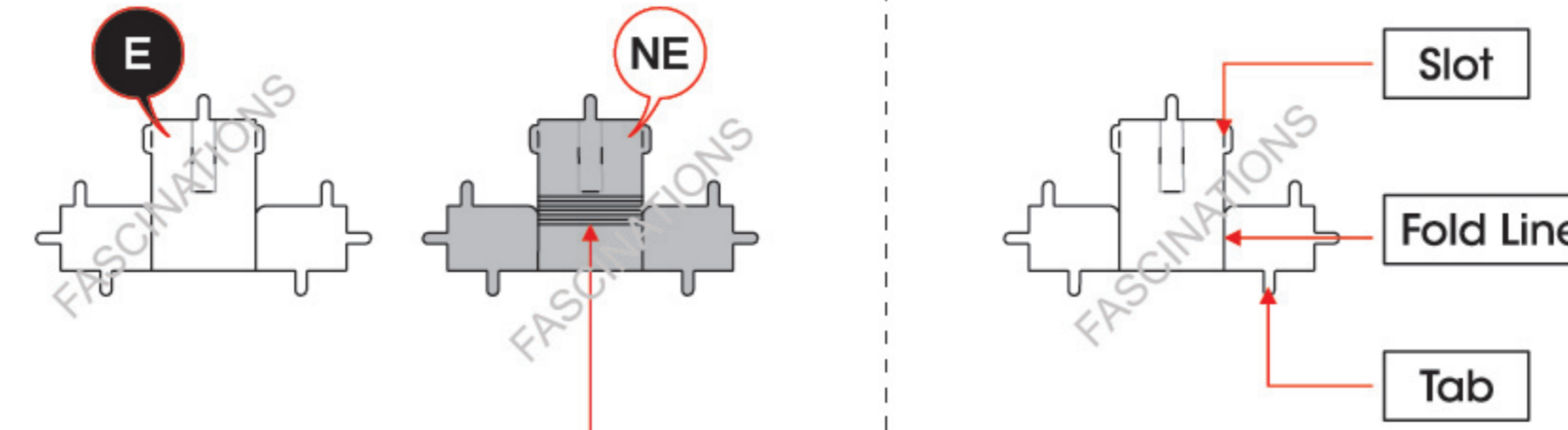
C



In order to avoid possible injury from sharp edges, please carefully discard the metal sheets after parts have been removed.

TO CREATE THE BEST CONNECTIONS

C-13



Consider these engraved stripes as supporting features for the bend

Legends:

- E Engraved/ Color side
- NE Non - engraved/ Silver side
- Attention point
- Insert tab and bend 90 degrees
- ▲ Insert tab and twist 90 degrees

Recommended tools:

- Wire cutters: helpful for taking parts from the metal sheets.

- Tweezers or needle nose pliers: helpful for folding parts, bending and twisting tabs.

Assembly tip:

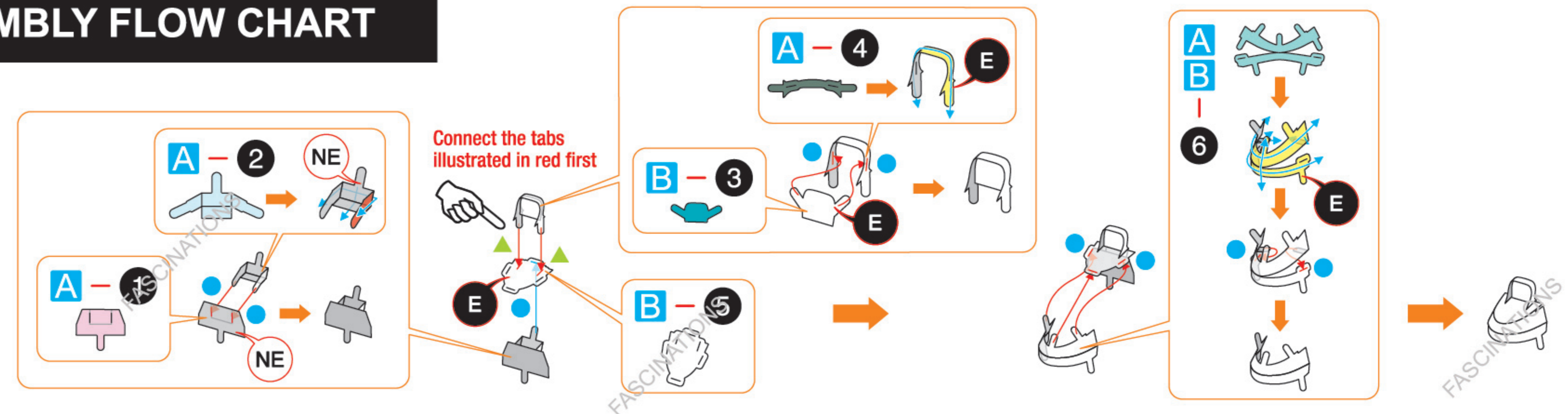
If needed, slightly twist tabs to hold parts together then untwist and bend them down for a nice finish.

Yellow areas should be curled

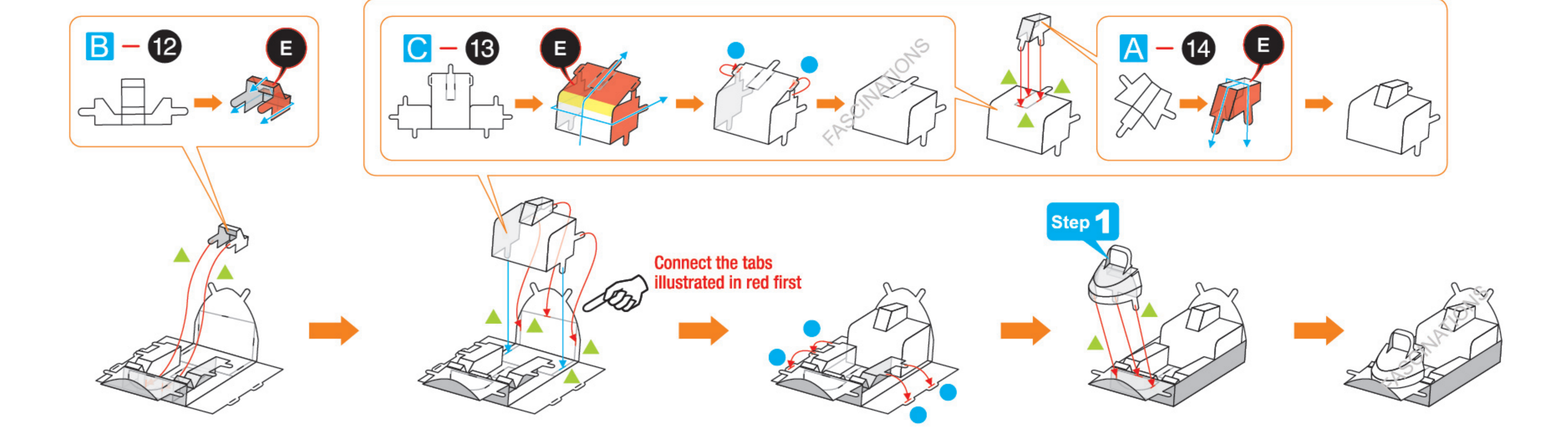
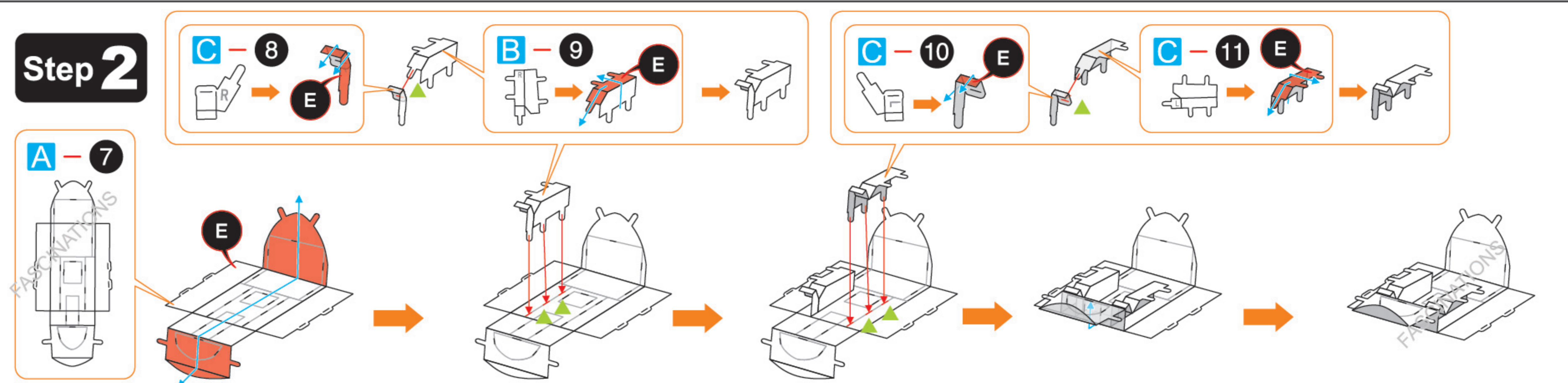
Red areas should be folded

ASSEMBLY FLOW CHART

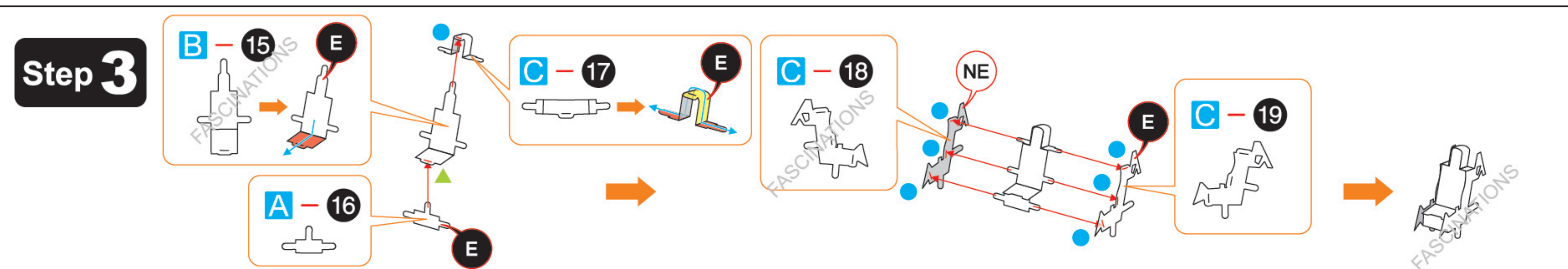
Step 1

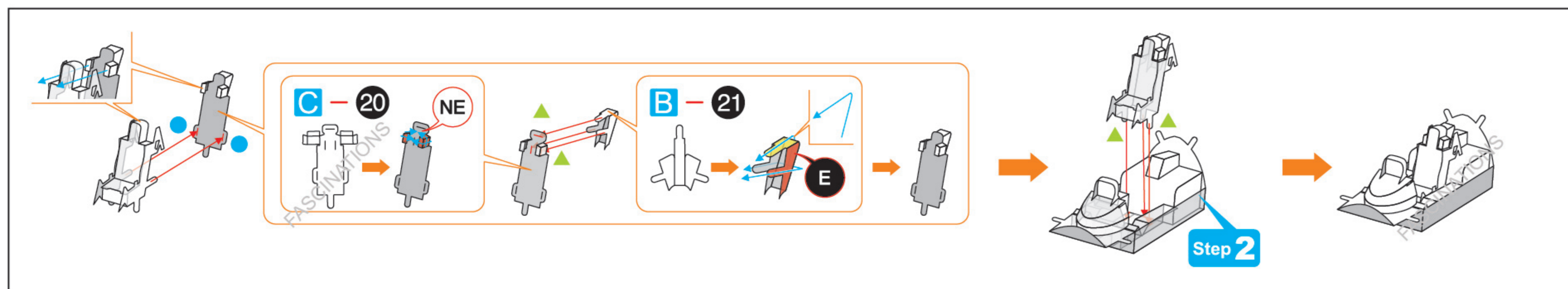


Step 2

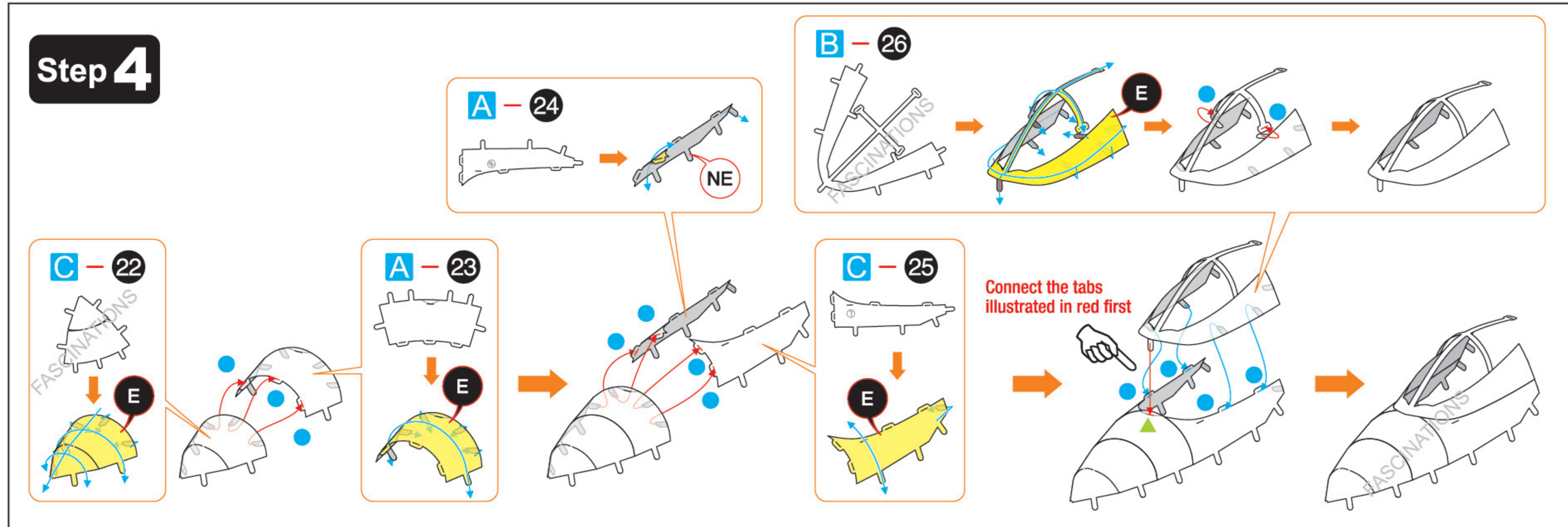


Step 3

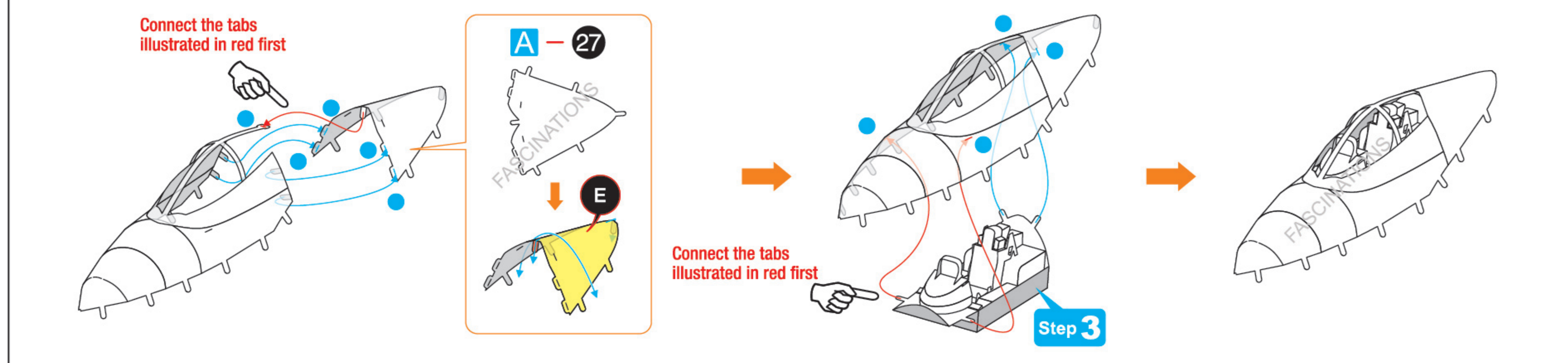




Step 4

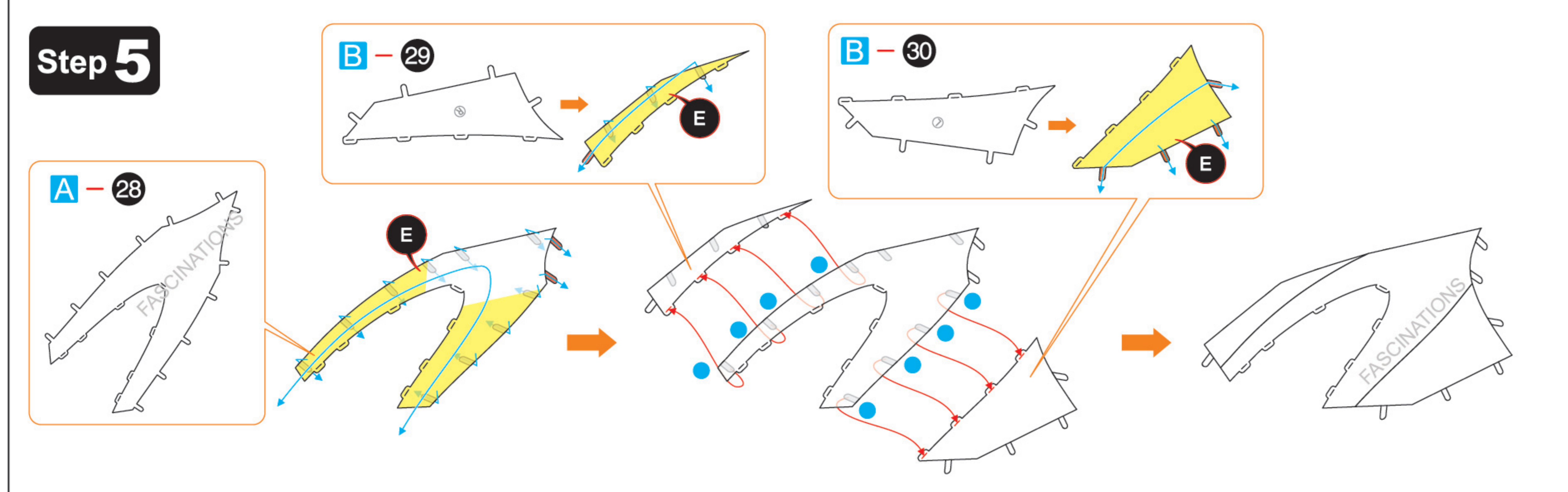


Connect the tabs illustrated in red first

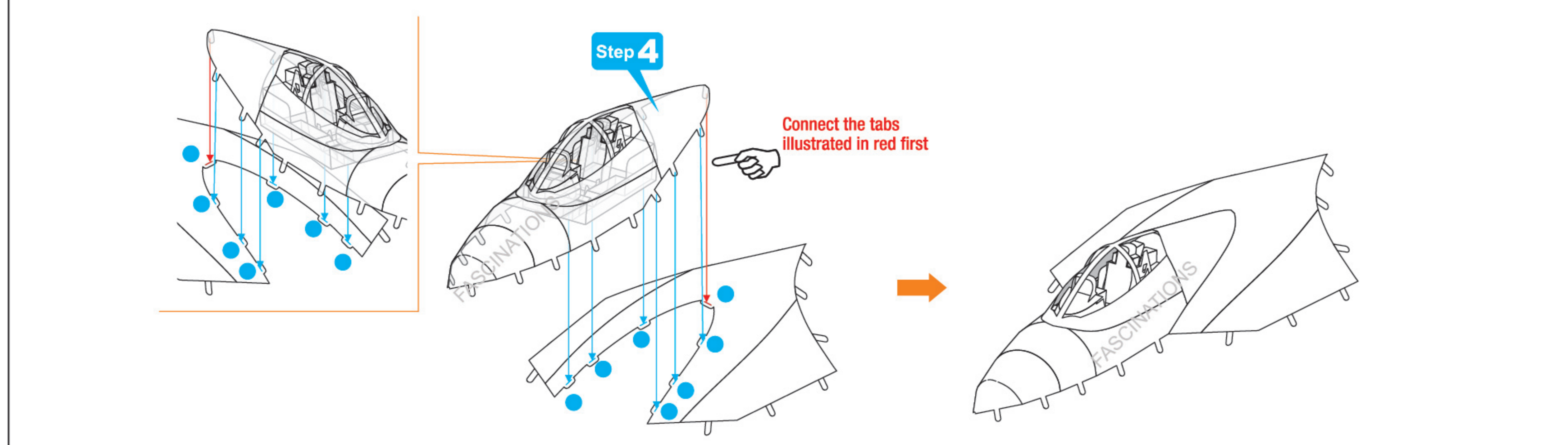


Connect the tabs illustrated in red first

Step 5

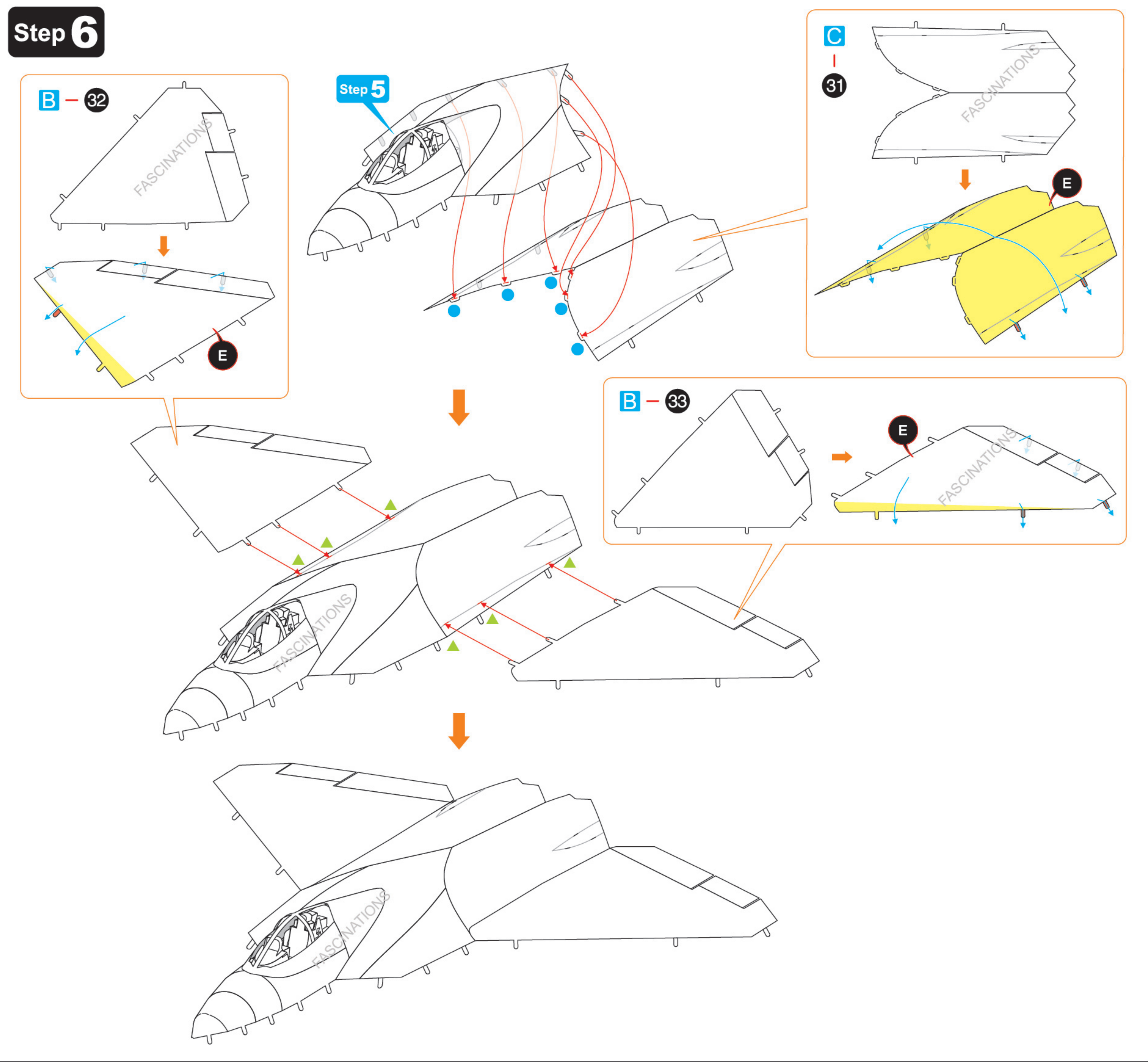


Step 4

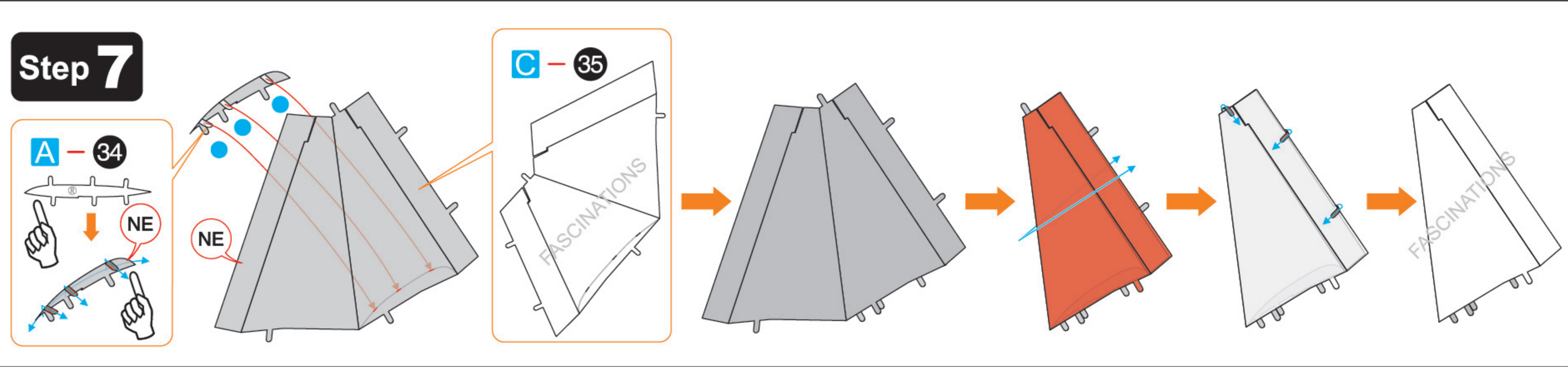


Connect the tabs illustrated in red first

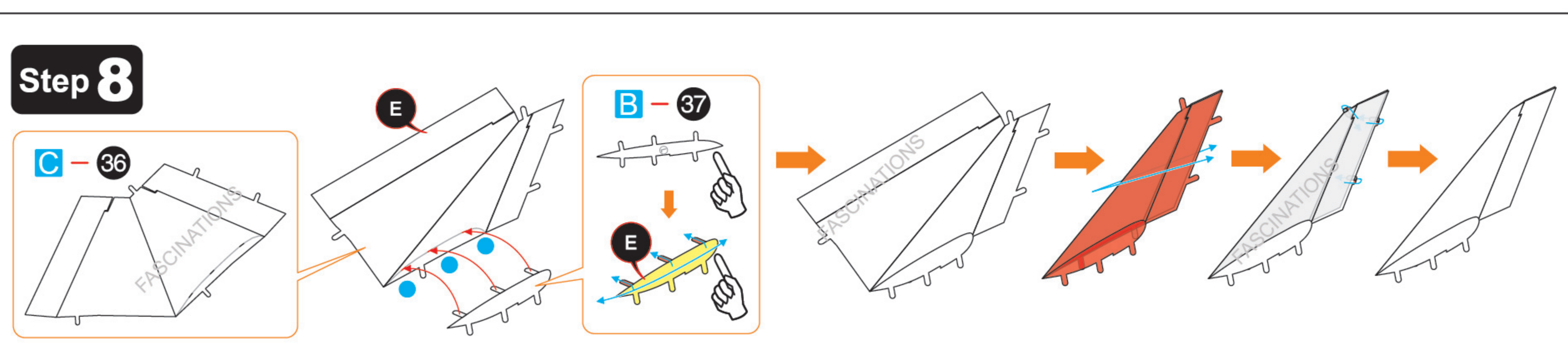
Step 6



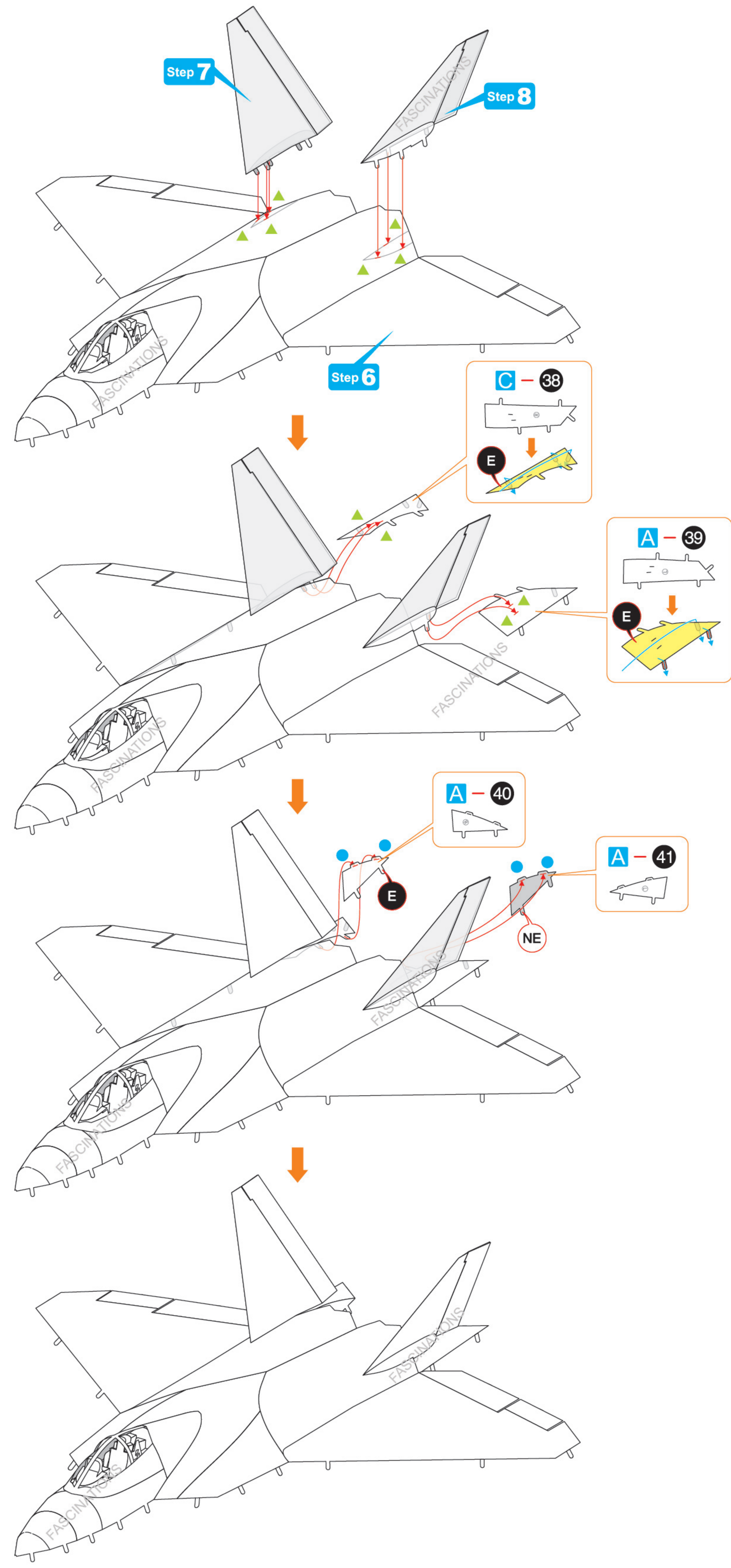
Step 7



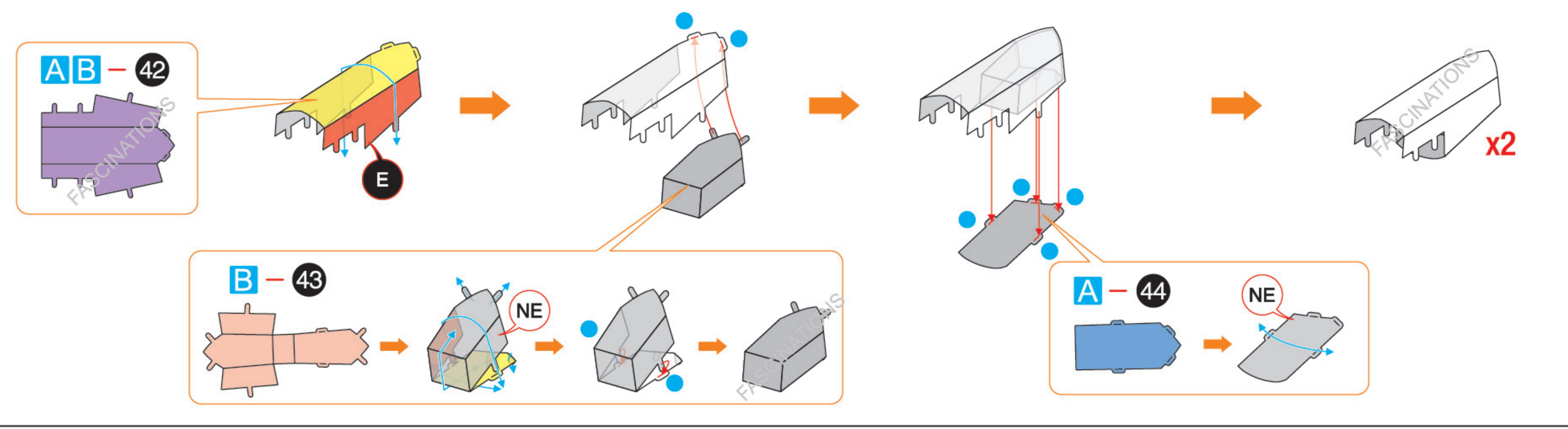
Step 8



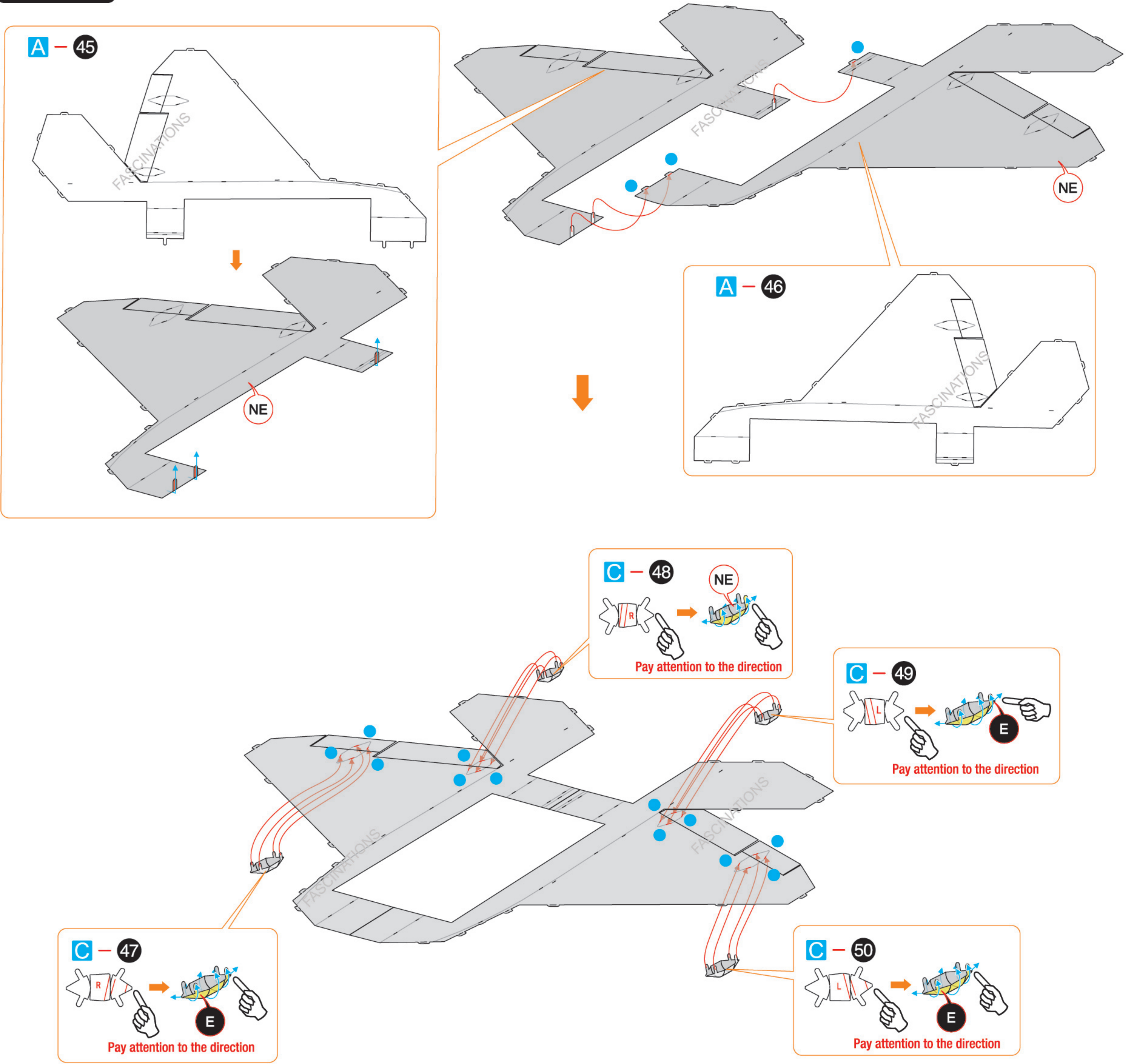
Step 9

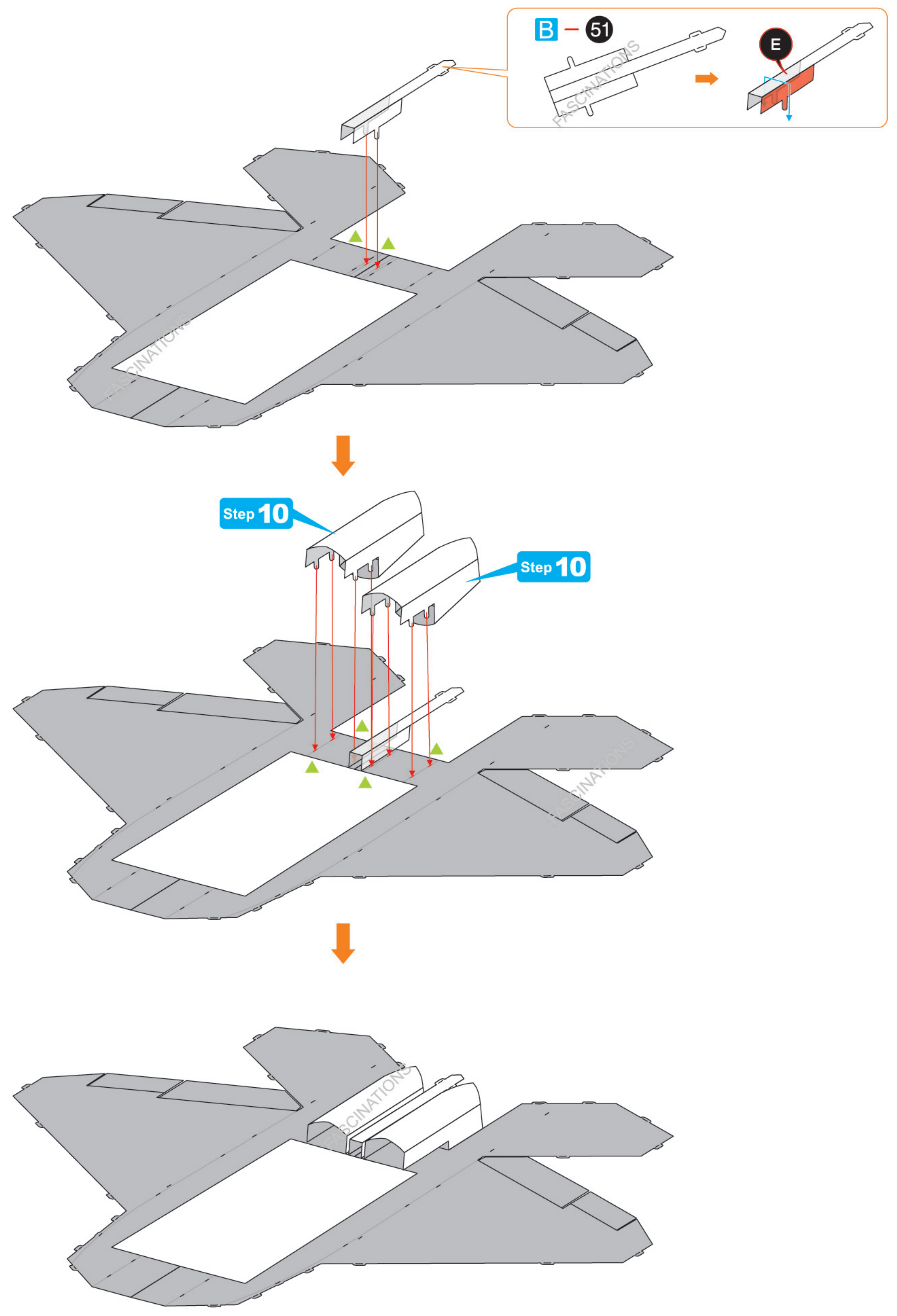


Step 10

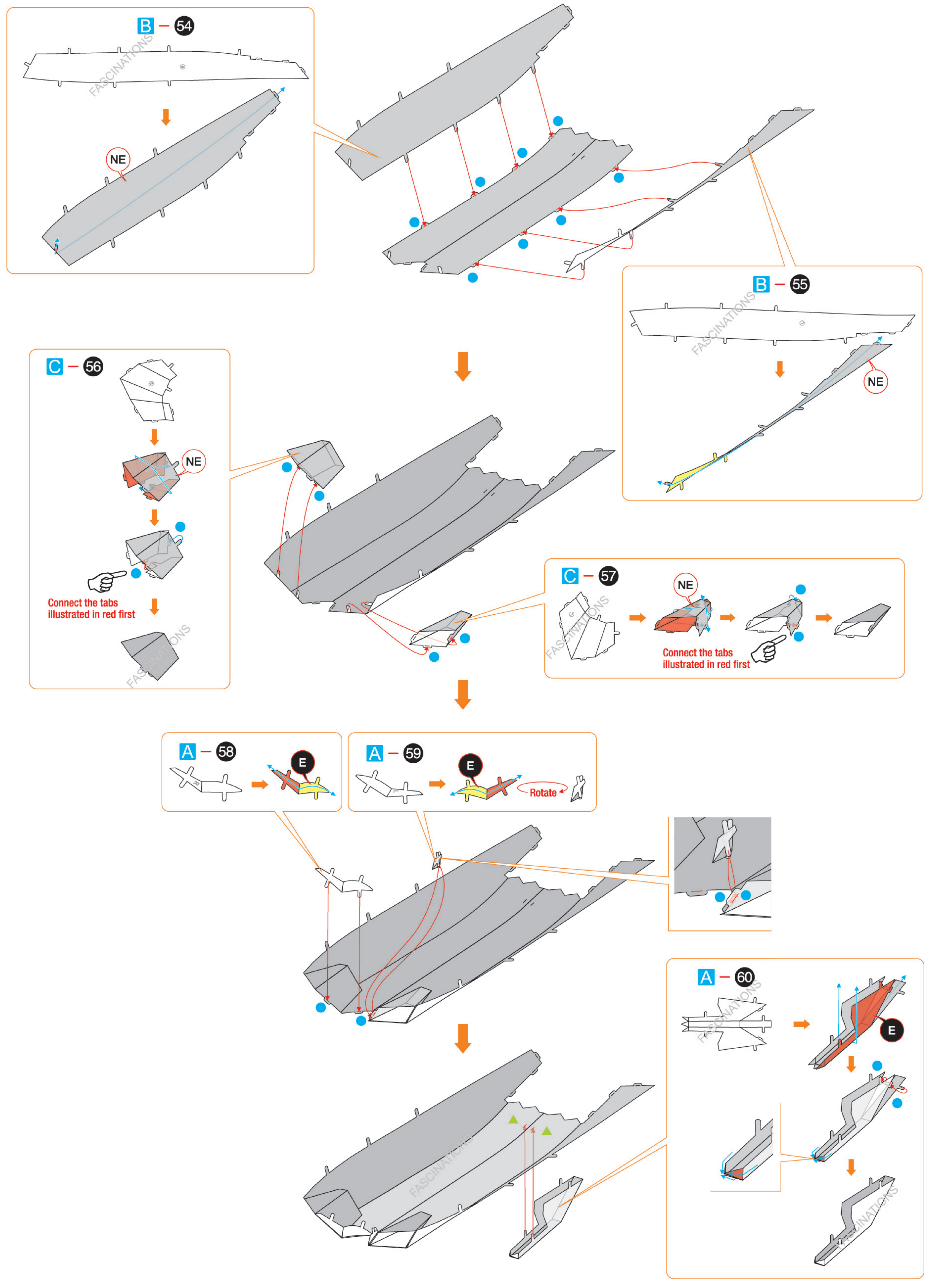
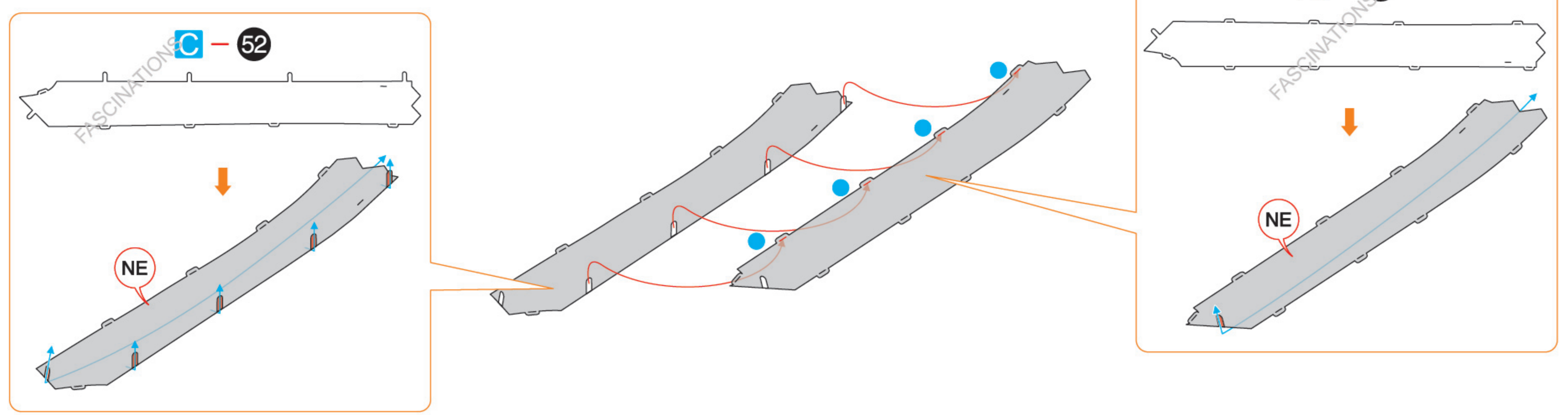


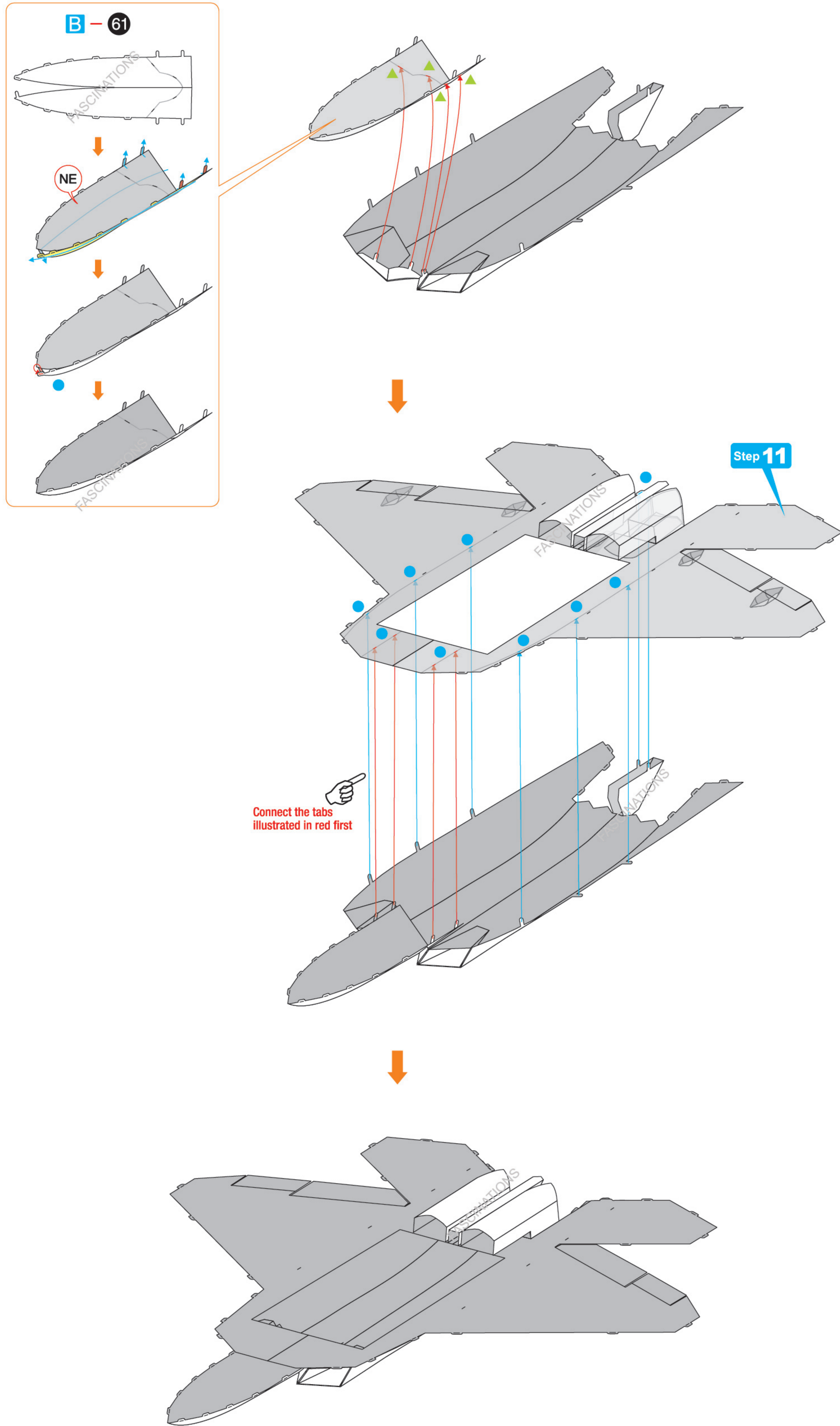
Step 11



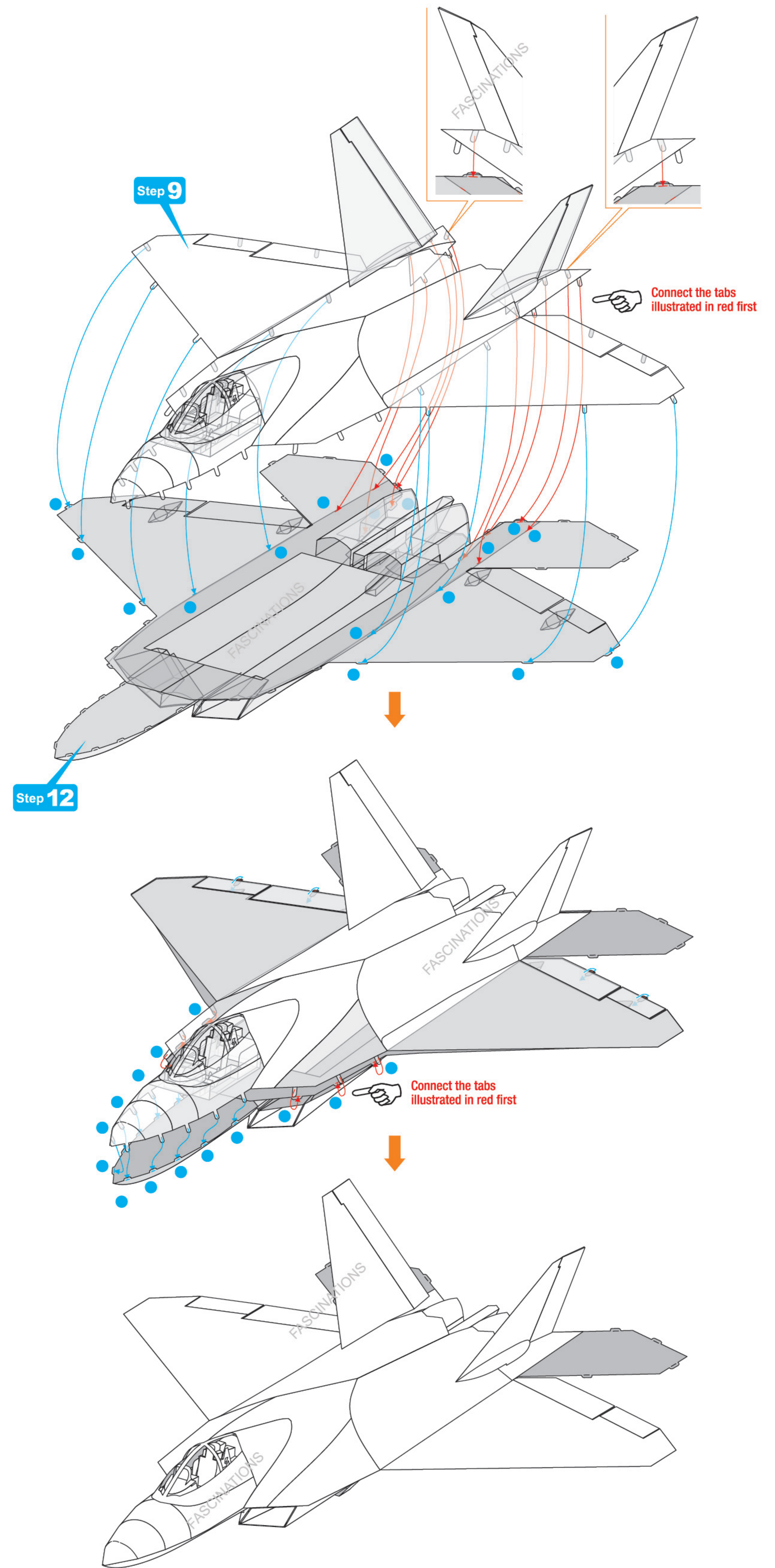


Step 12

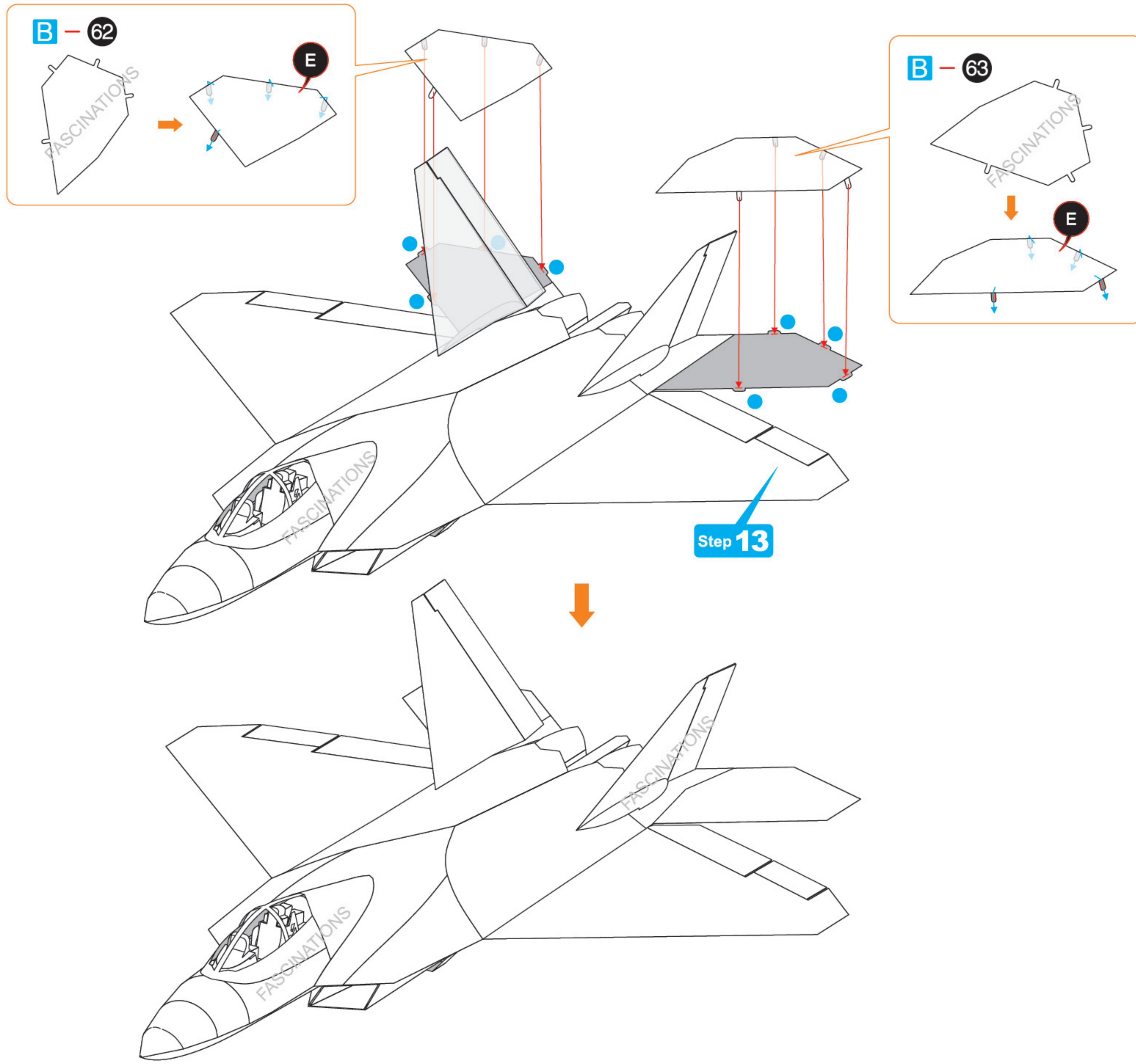




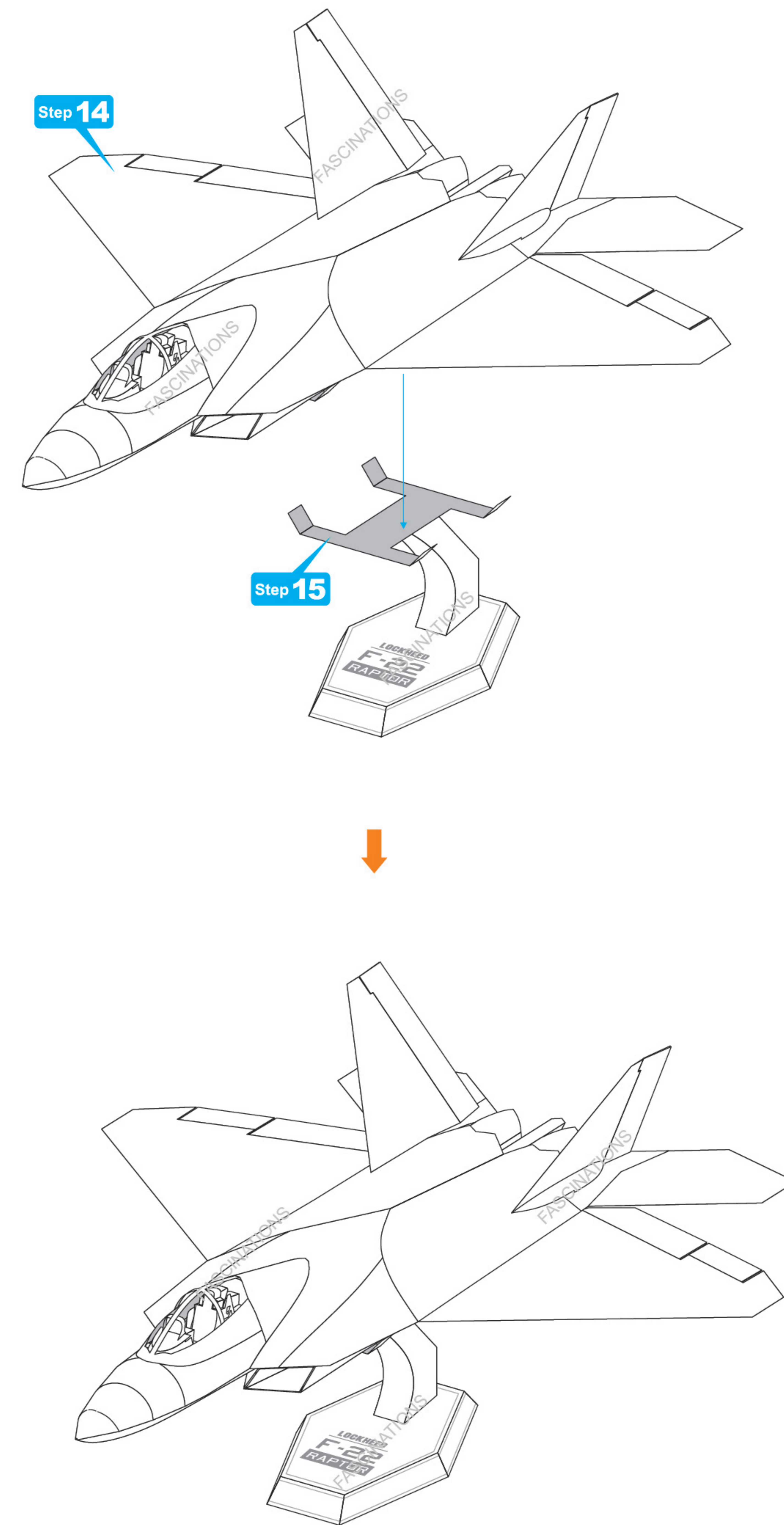
Step 13



Step 14



Step 16



Step 15

