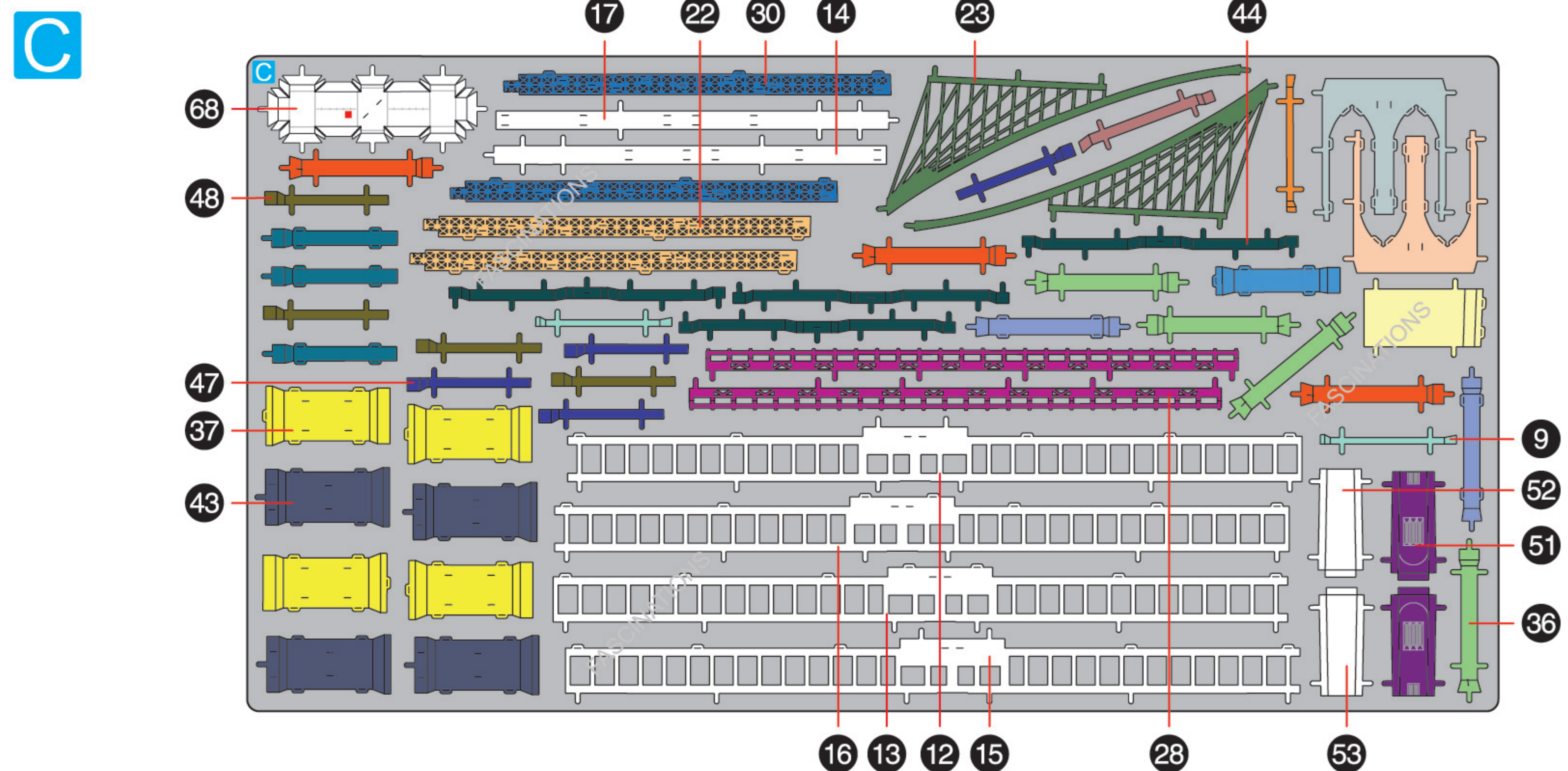
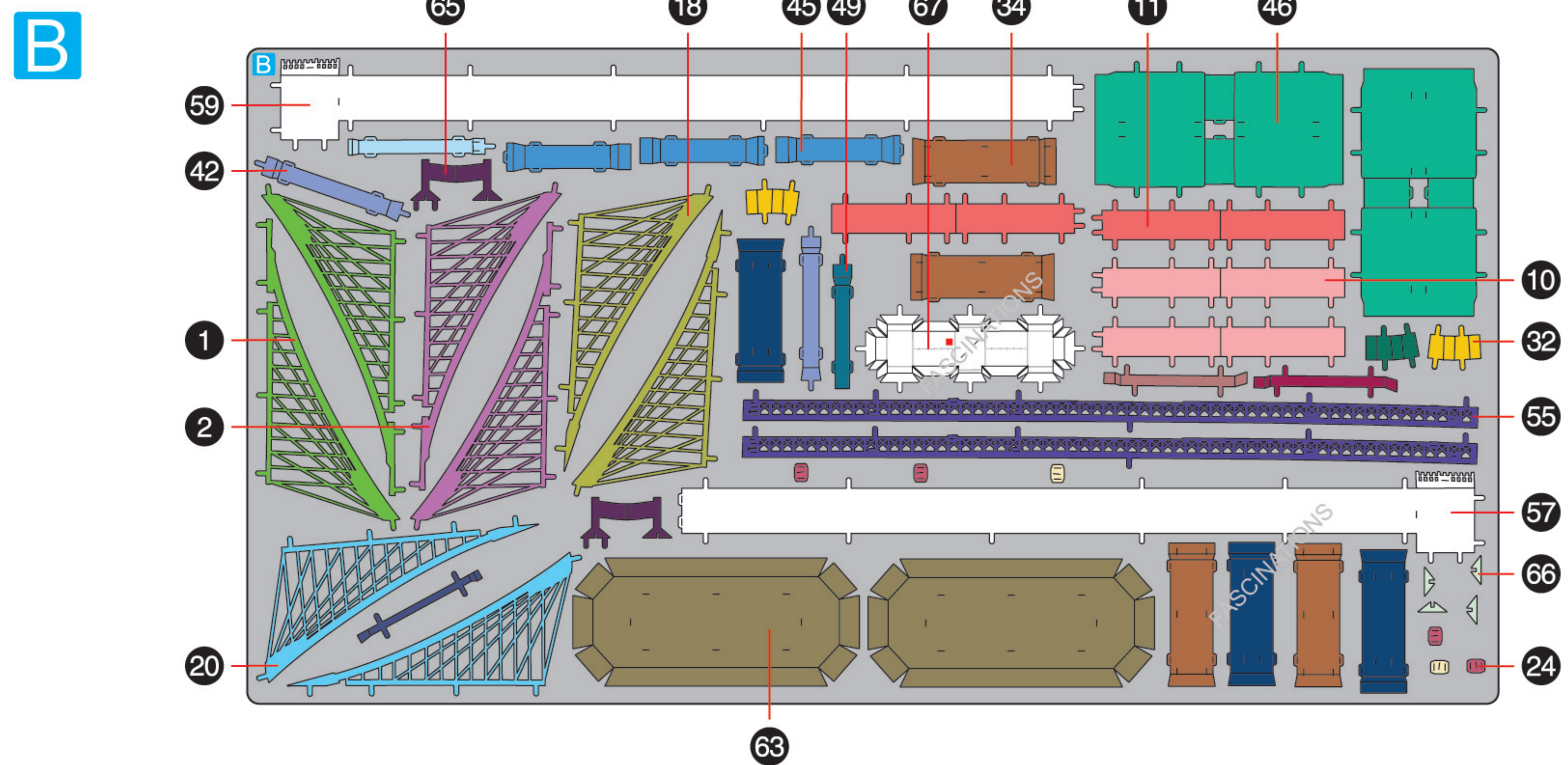
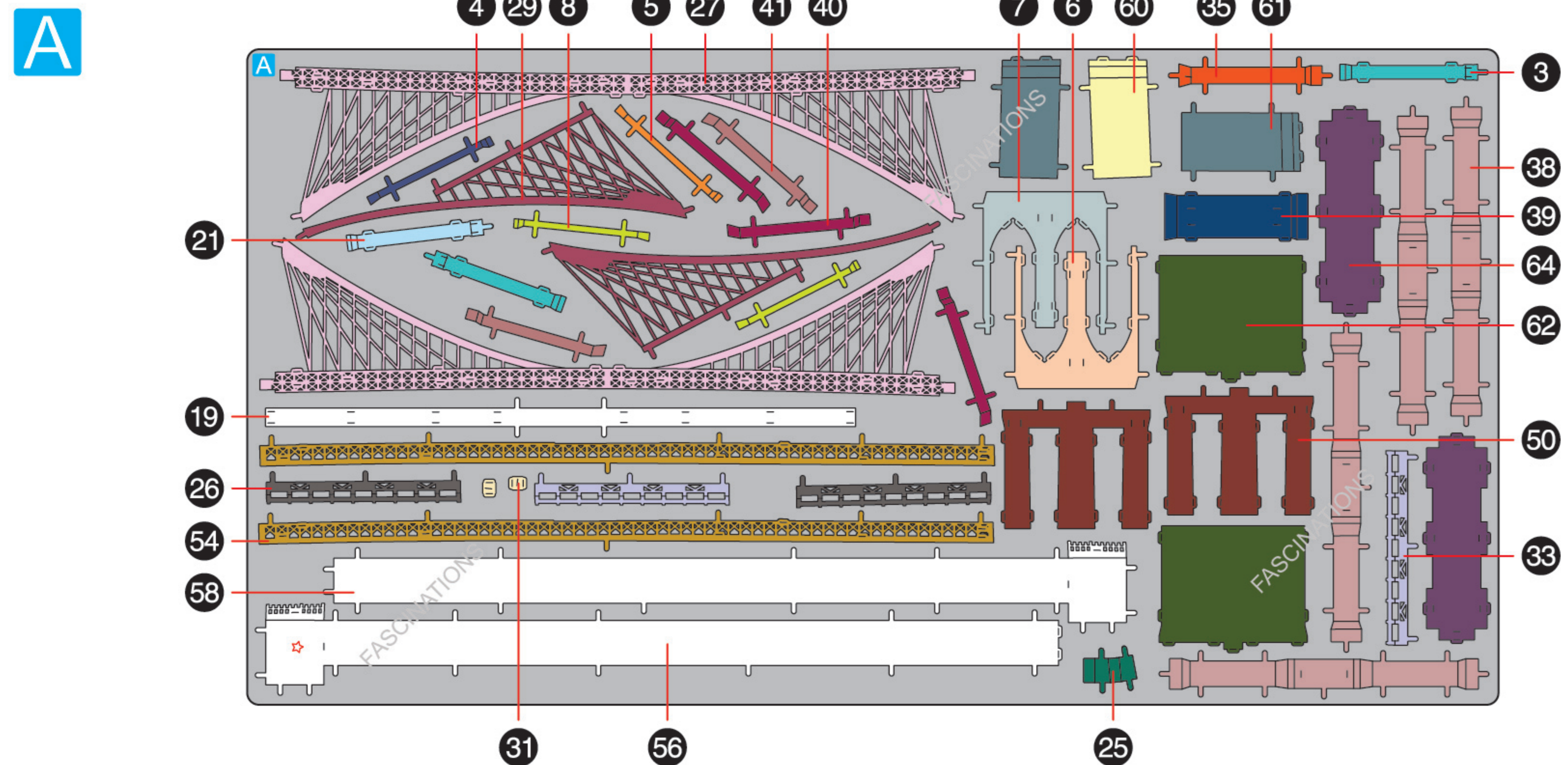


METAL SHEETS

Parts with same color are duplicates



Metal Earth

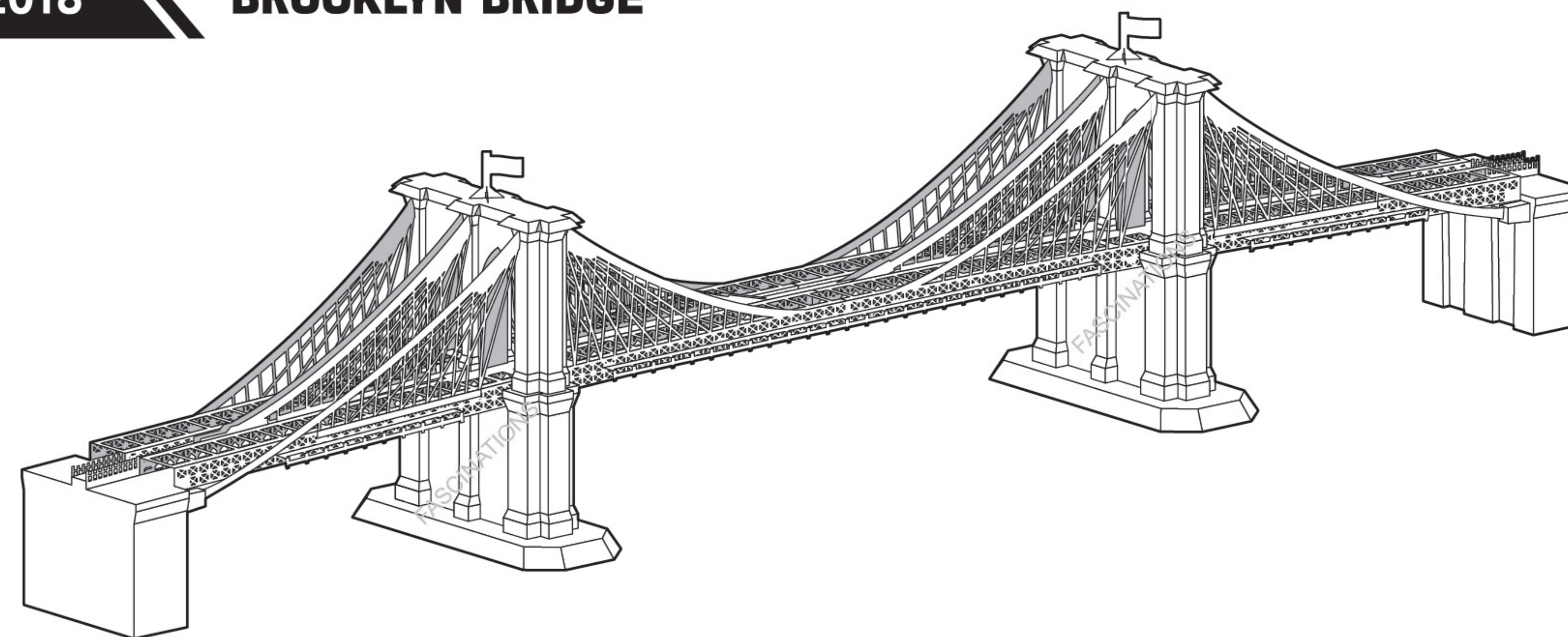
360° view



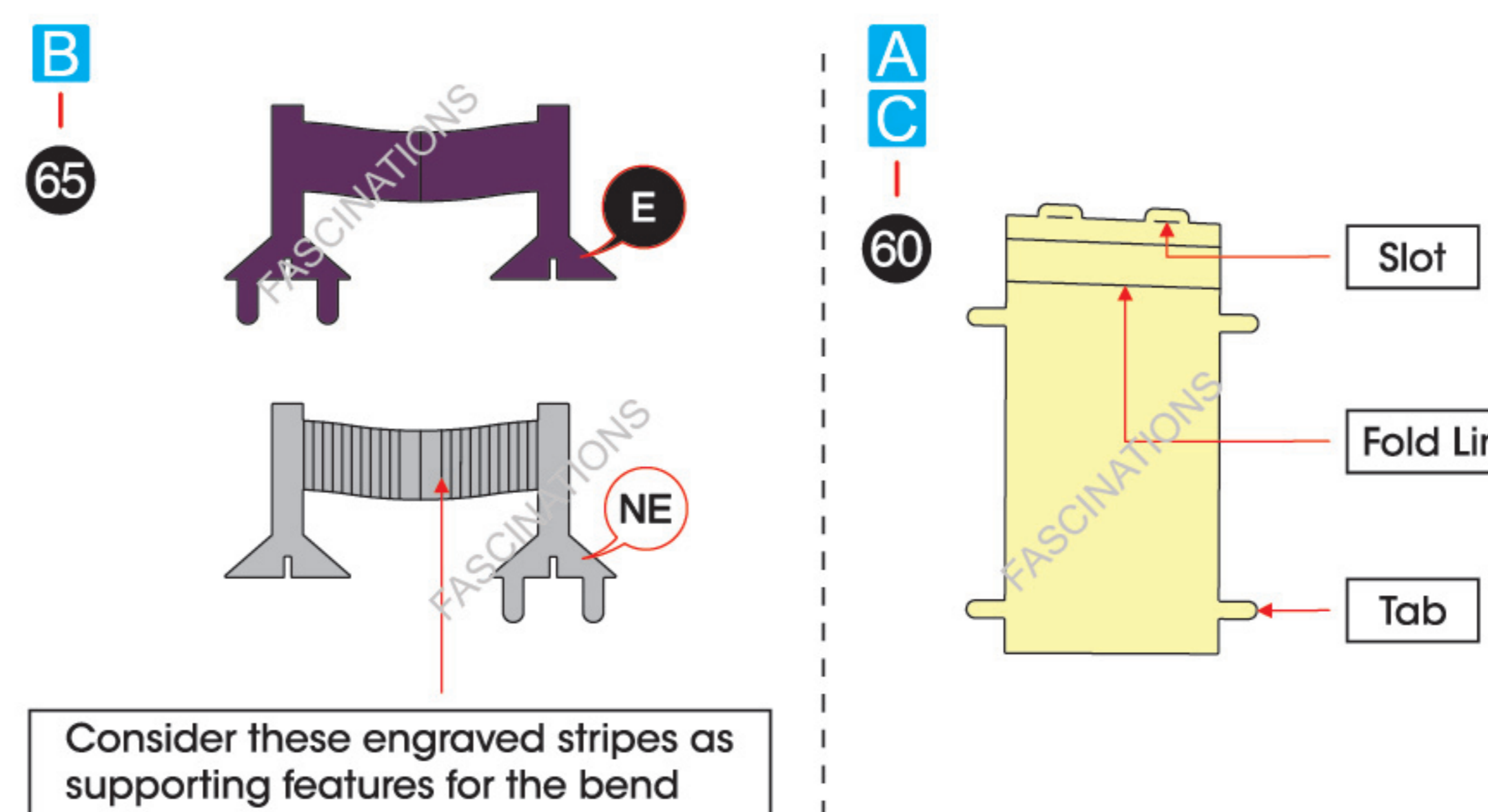
It is highly recommended that you visit www.metalearth.com/360/PS2018 to see the completed model before assembling your own

Premium Series

PS2018 BROOKLYN BRIDGE



TO CREATE THE BEST CONNECTIONS



! In order to avoid possible injury from sharp edges, please carefully discard the metal sheets after parts have been removed.

Legends:

- E** Engraved / Color side
- NE** Non - engraved / Silver side
- Attention point
- Insert tab and bend 90 degrees
- Insert tab and twist 90 degrees

Assembly tip:

If needed, slightly twist tabs to hold parts together then untwist and bend them down for a nice finish.

- Yellow areas should be curled
- Red areas should be folded

Recommended tools:

- Wire cutters: helpful for taking parts from the metal sheets.

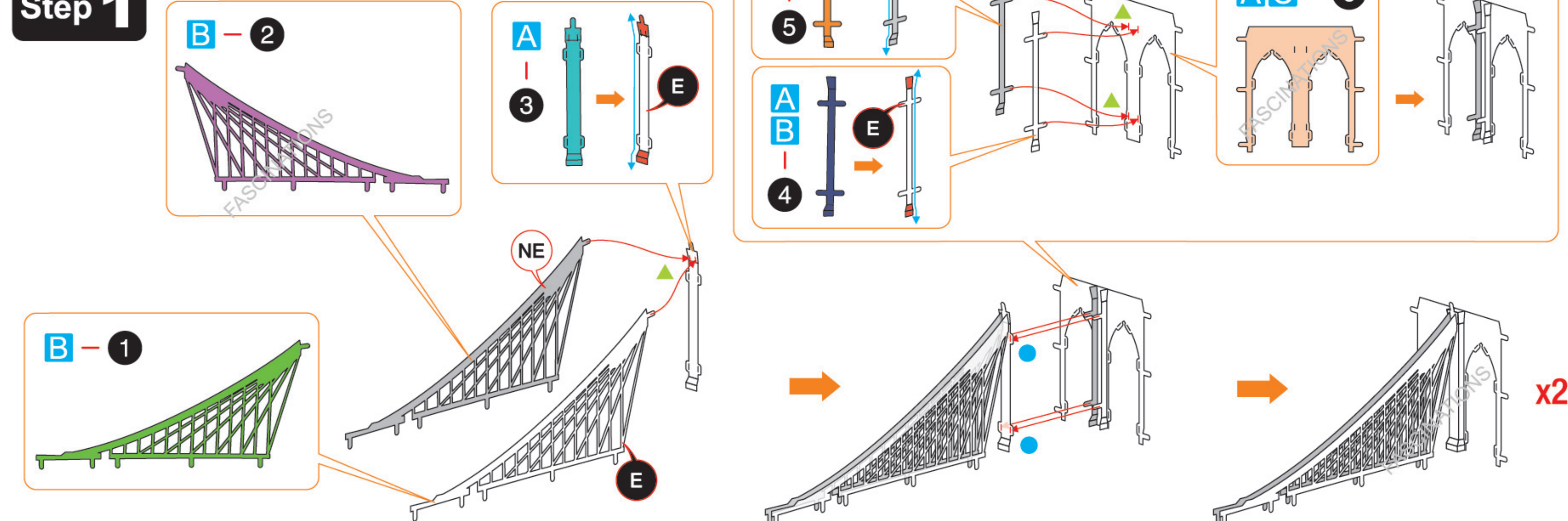


- Tweezers or needle nose pliers: helpful for folding parts, bending and twisting tabs.



ASSEMBLY FLOW CHART

Step 1



Step 2

9 NE

8 E

10 E

11 E

AC - 7

NE

Connect the tabs illustrated in red first

Connect the tabs illustrated in red first

Step 1

x2

Step 3

Step 2

Connect the tabs illustrated in red first

C - 14

E

C - 12

E

C - 13

Step 4

Step 2

Connect the tabs illustrated in red first

C - 17

E

C - 15

E

C - 16

Step 5

B - 18

NE

x2

E

AB - 21

NE

x2

A - 19

B - 20

x2

Step 6

C - 22

C - 23

E

NE

B - 24

AB - 25

E

A - 26

E

x2

Step 7

A - 27

C - 28

E

x2

Step 8

AB - 31

A - 29

E

C - 30

B - 32

E

A - 33

E

x2

Step 9

AC - 35

B - 34 NE

C - 36 NE

x4

Step 10

A - 38

C - 37 NE

x4

Step 11

AB - 39 E

ABC - 40 E

ABC - 41 NE

BC - 42 E

BC - 43 E

BC - 44 E

BC - 45 E

x4

Step 12

B - 46 E

C - 47 NE x2

C - 48 NE x2

BC - 49 NE x2

x2

Step 13

A - 50

C - 51 E x2

Step 14

C - 52 NE

C - 53 NE

A - 50

Step 15 Pay attention to the direction

Step 3

Step 4

Step 5

Connect the tabs illustrated in red first

Connect the tabs illustrated in red first

A - 54 x2

B - 55 x2

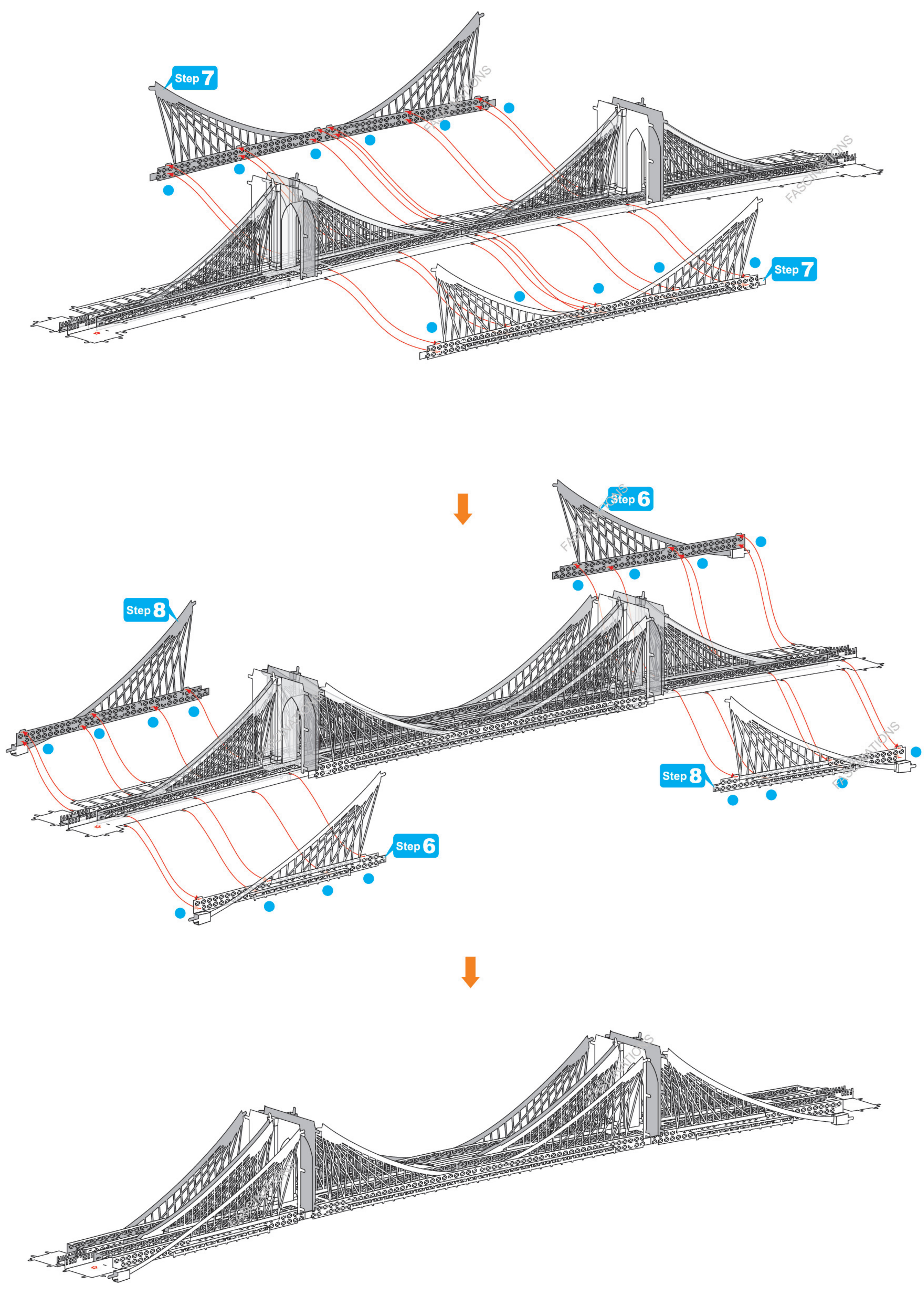
B - 57 E

B - 59 E

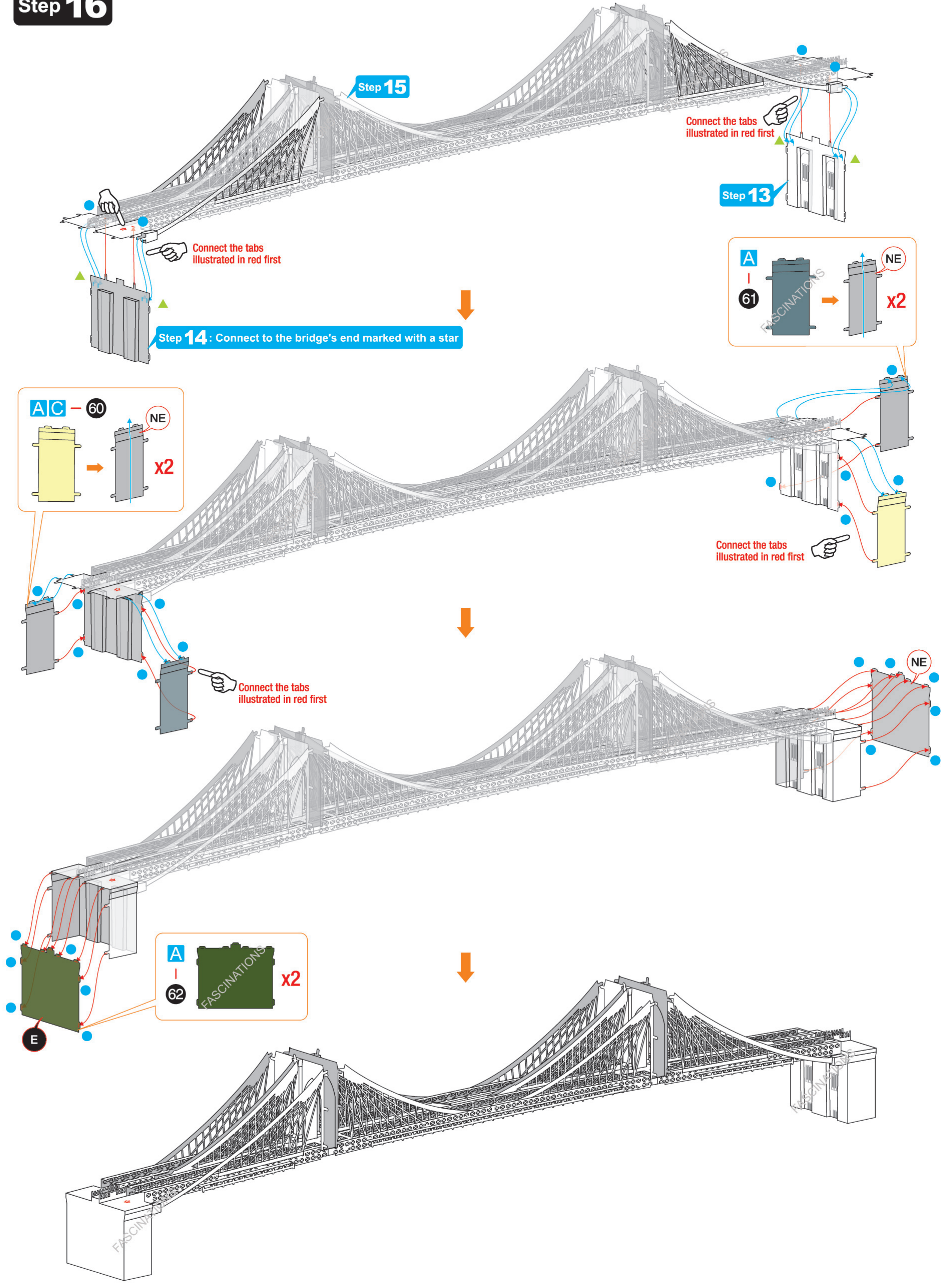
A - 56 E

A - 58 E

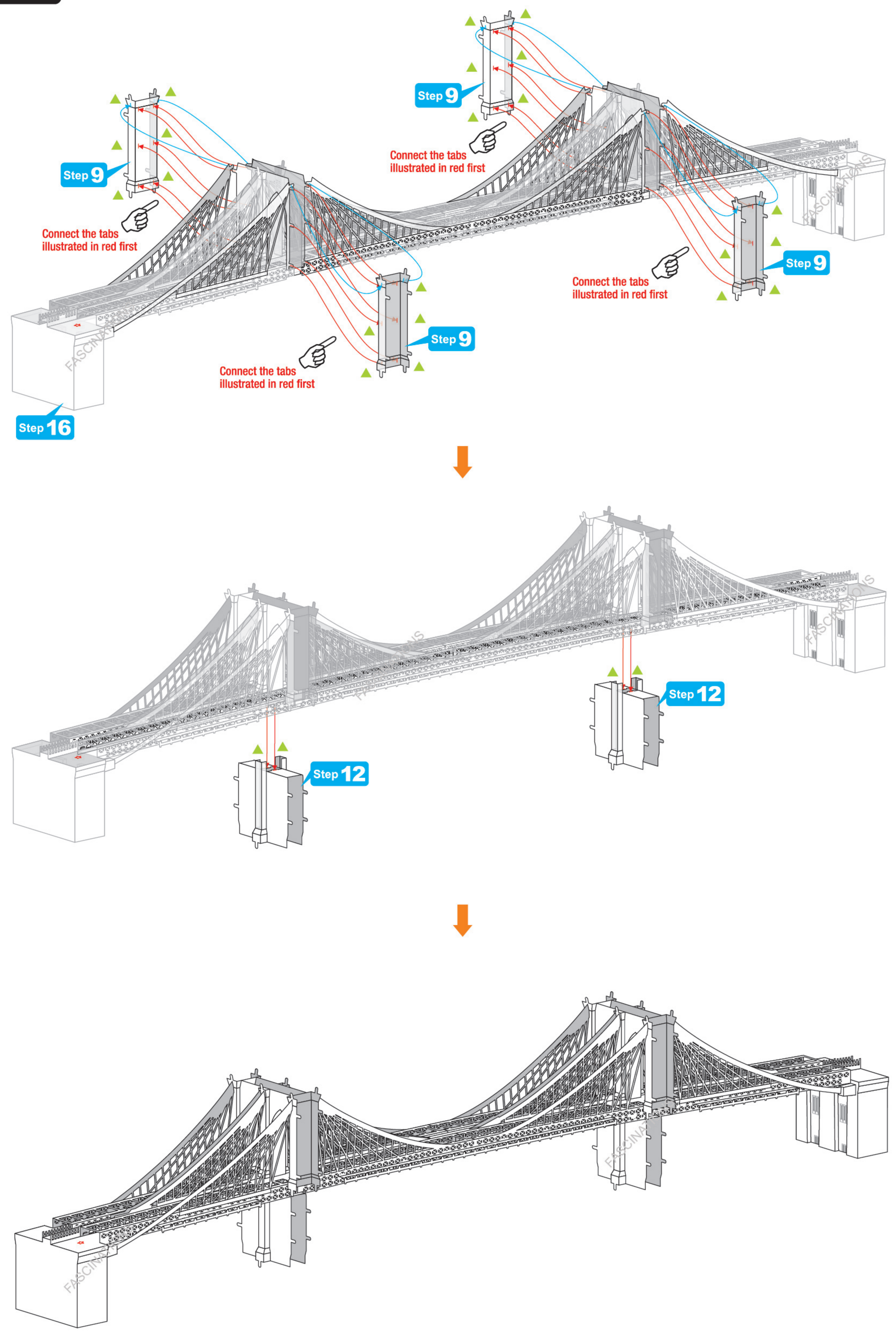
x2



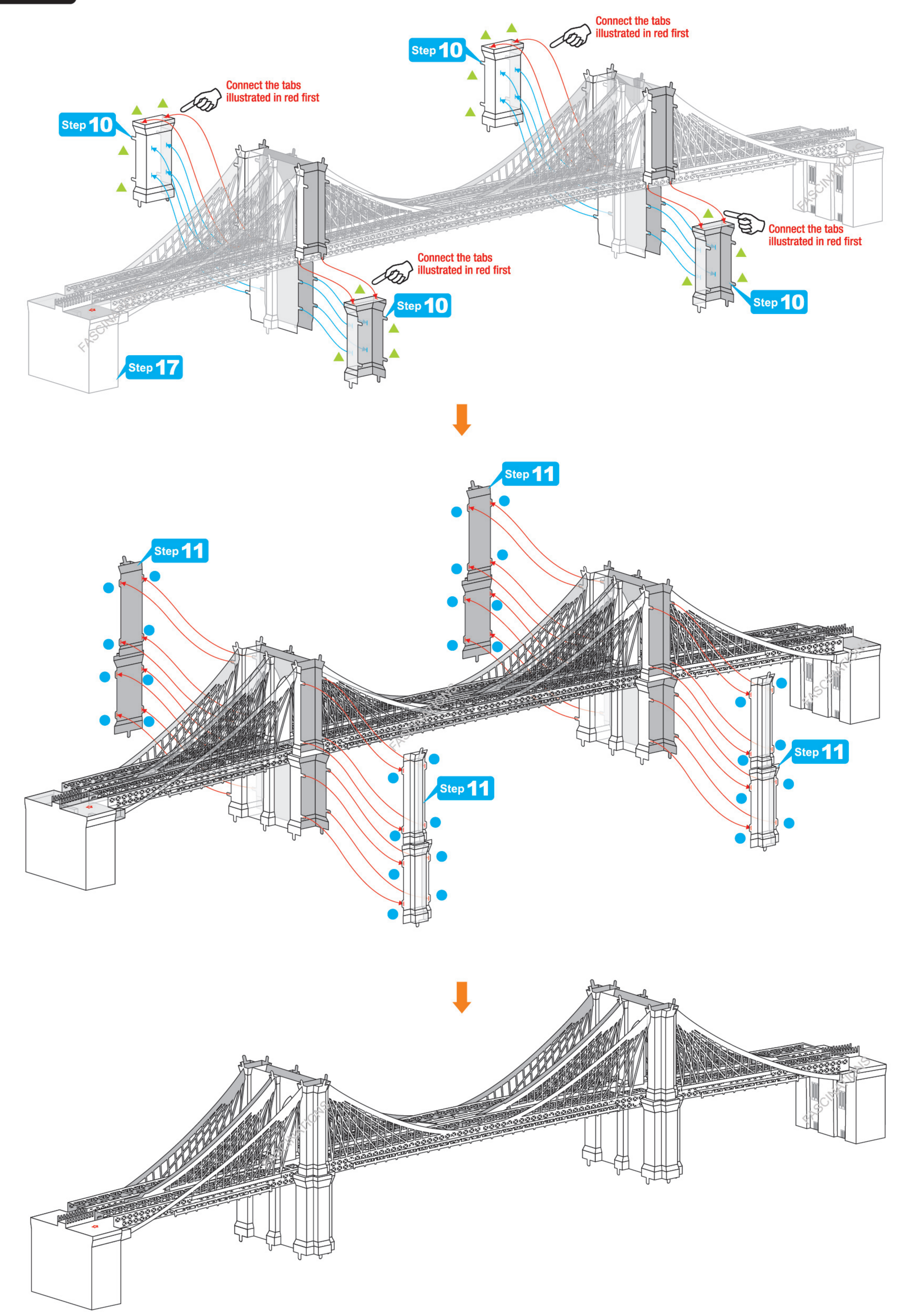
Step 16



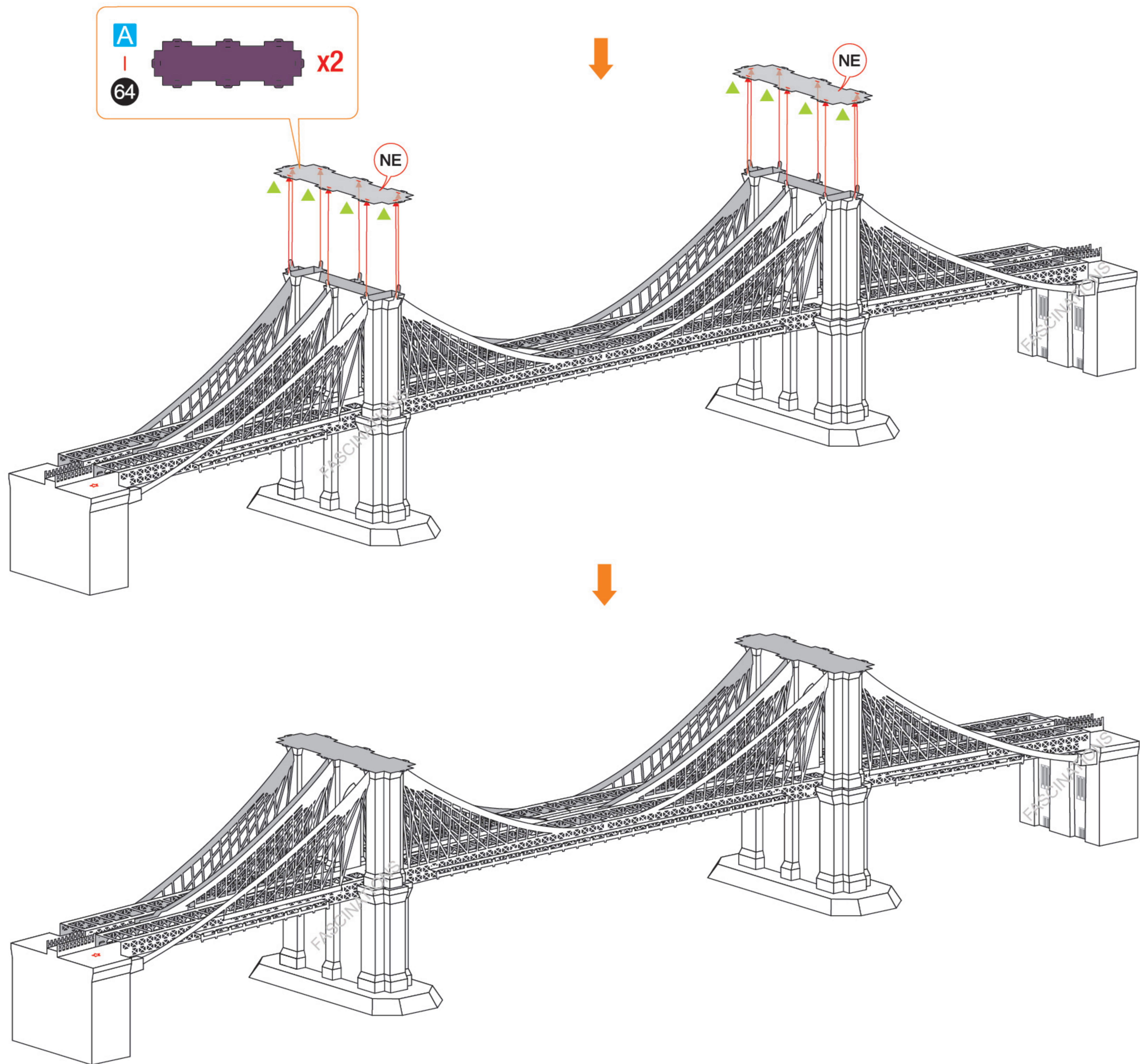
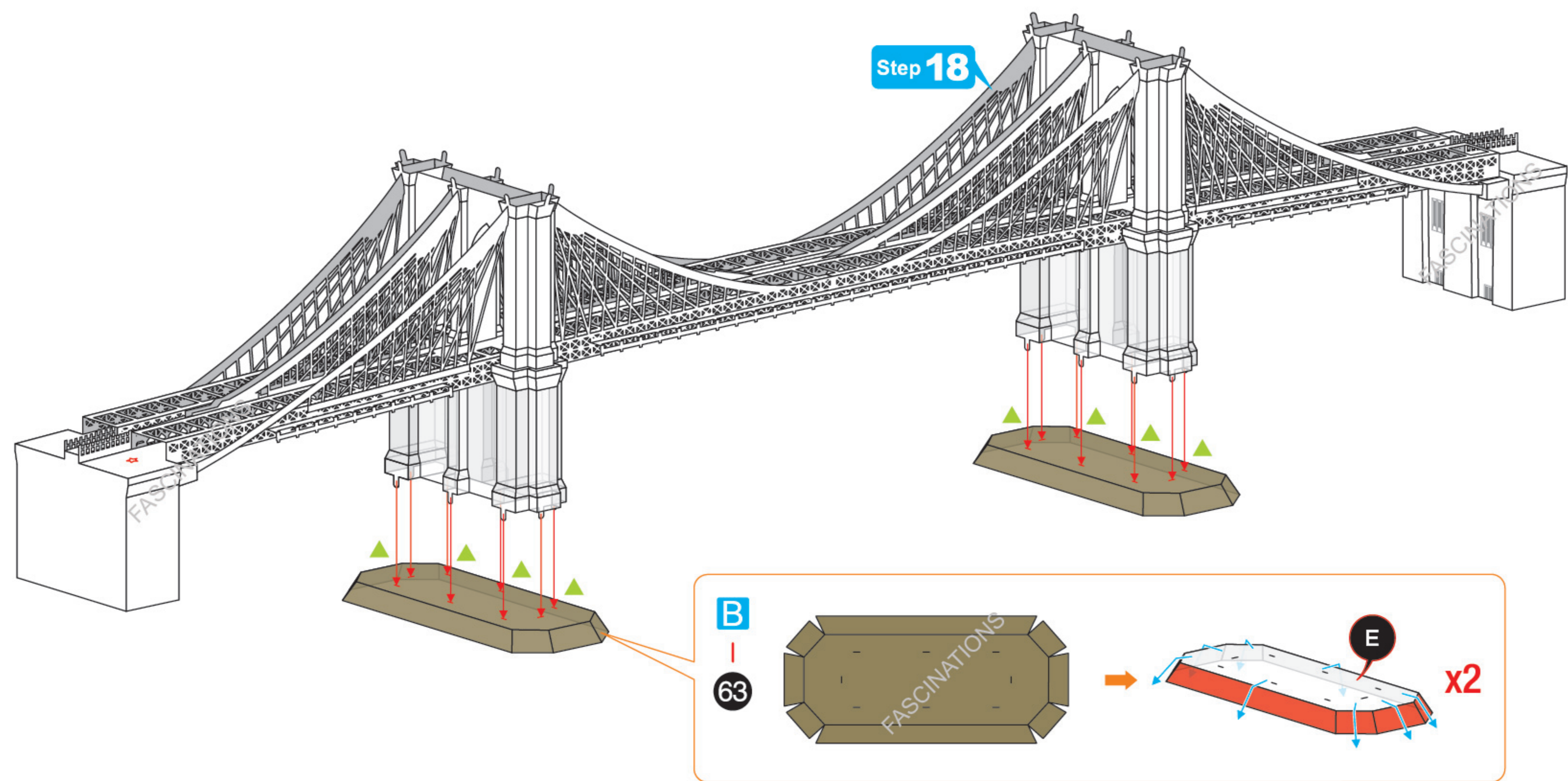
Step 17



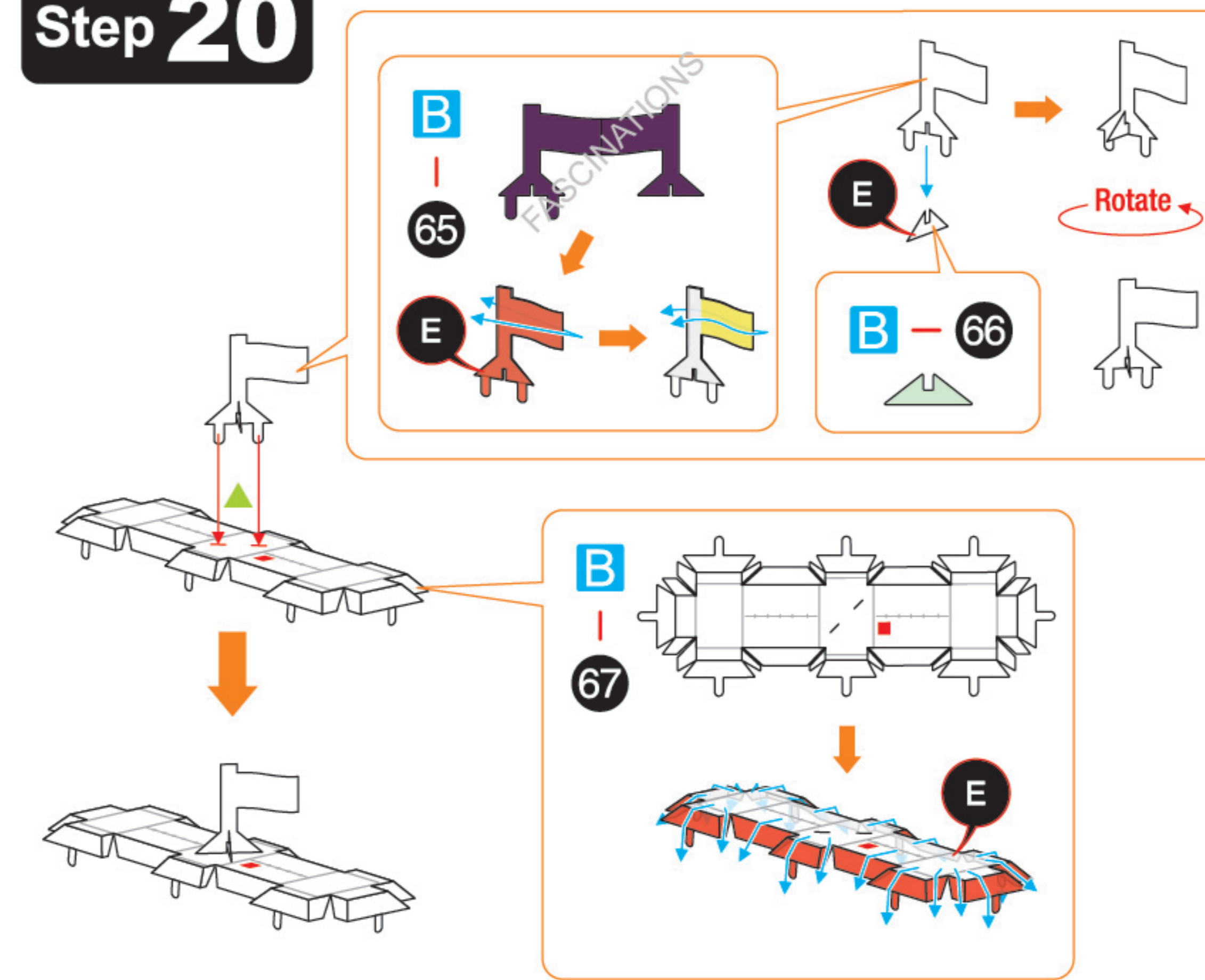
Step 18



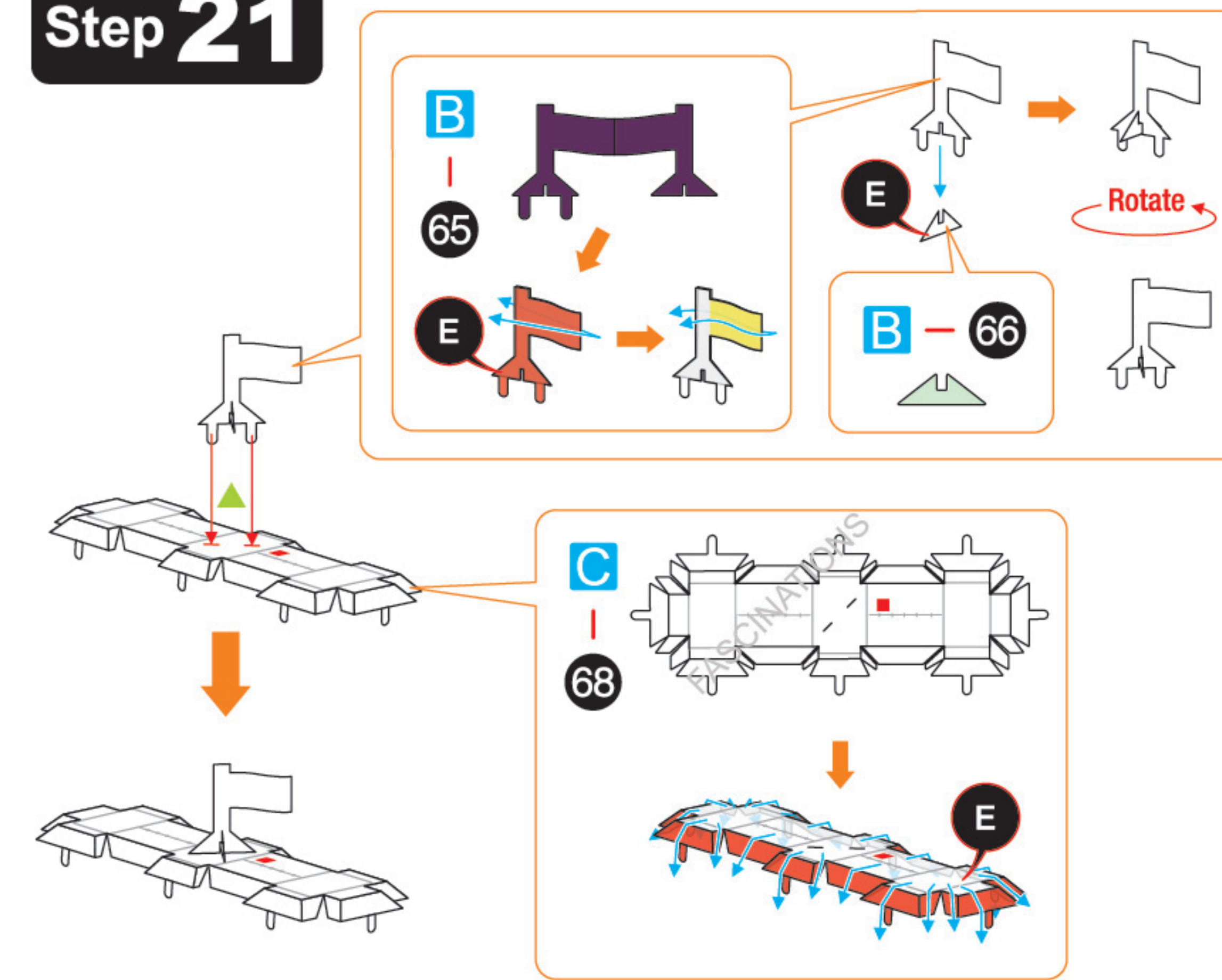
Step 19



Step 20



Step 21



Step 22

