

KEEL-BILLED TOUCAN ME1020

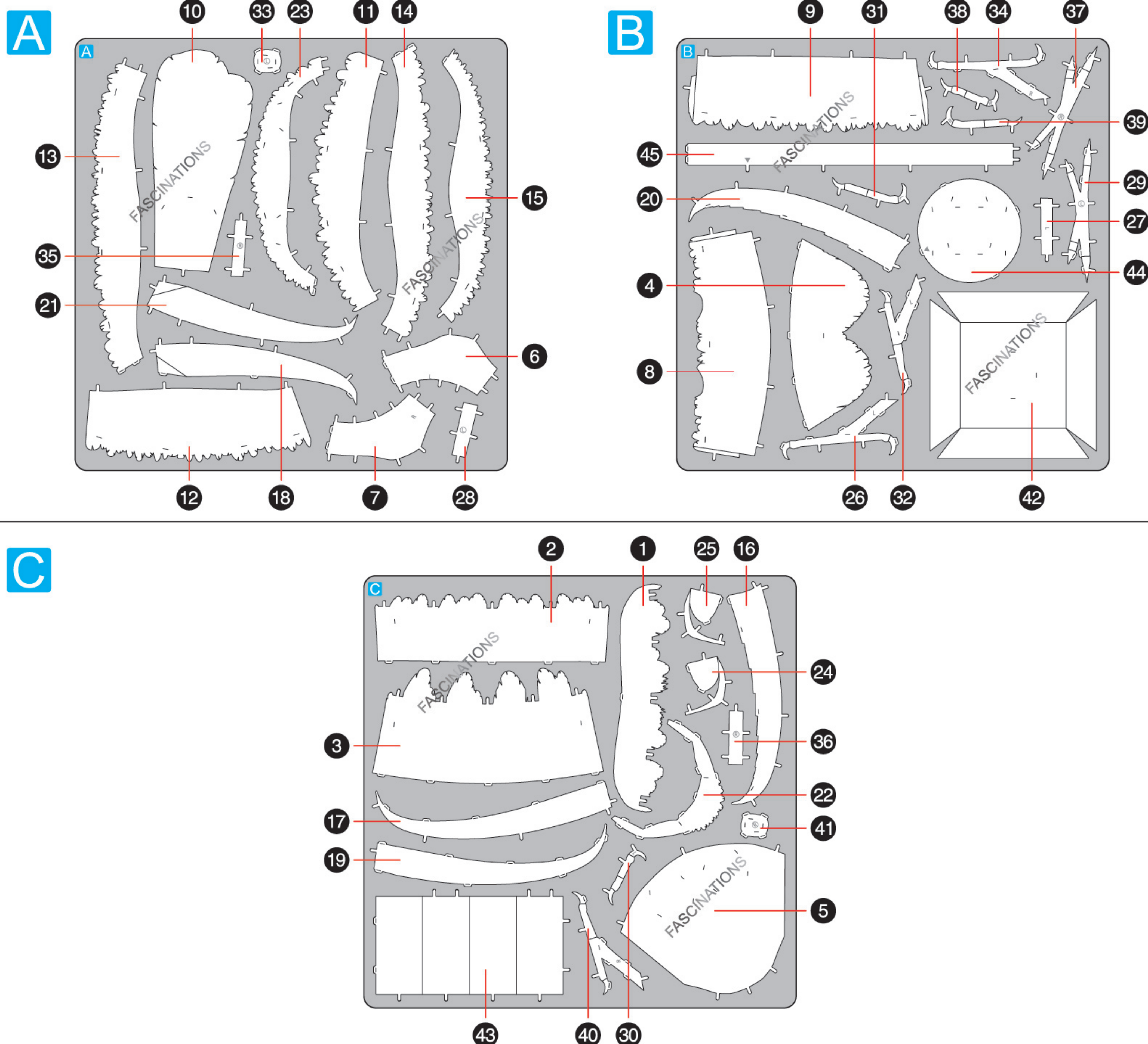
It is highly recommended that you visit
www.metal-earth.com/360/ME1020

to see the completed model before assembling your own



METAL SHEETS

Parts with same color are duplicates



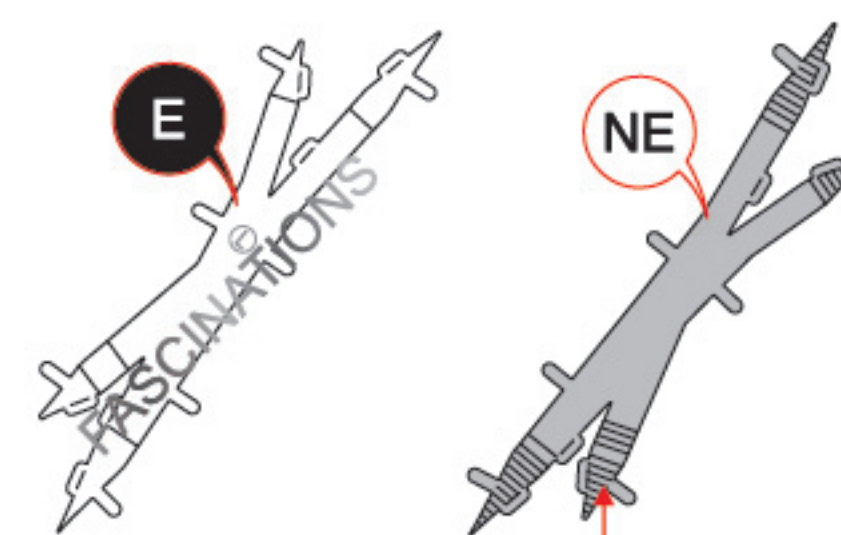
In order to avoid possible injury from sharp edges, please carefully discard the metal sheets after parts have been removed.



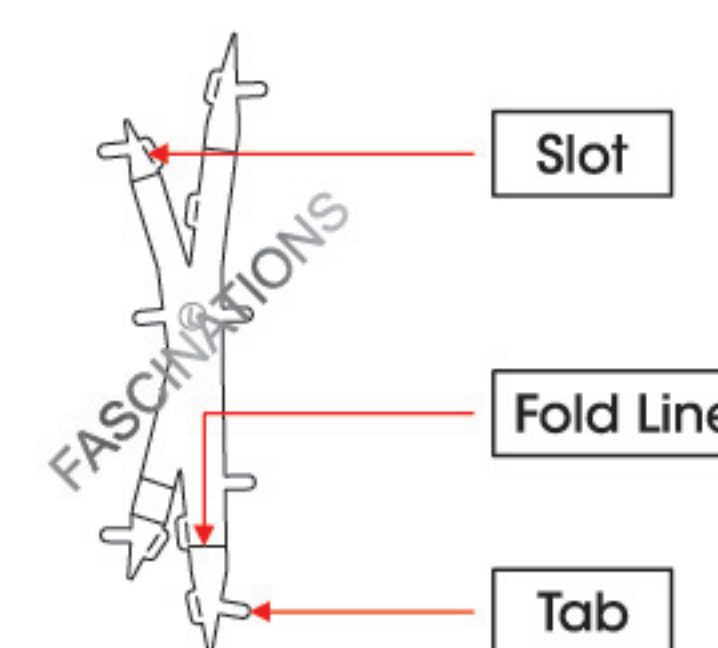
Go to www.metal-earth.com/360/ME1020 to see the zoomable PDF version of this instruction sheet

TO CREATE THE BEST CONNECTIONS

B - 29



Consider these engraved stripes as supporting features for the bend



Legends:

- E** Engraved/ Color side
- NE** Non - engraved/ Silver side
- Attention point
- Insert tab and bend 90 degrees
- Insert tab and twist 90 degrees

Assembly tip:

If needed, slightly twist tabs to hold parts together then untwist and bend them down for a nice finish.

- Yellow areas should be curled
- Red areas should be folded

Recommended tools:

- Wire cutters: helpful for taking parts from the metal sheets.

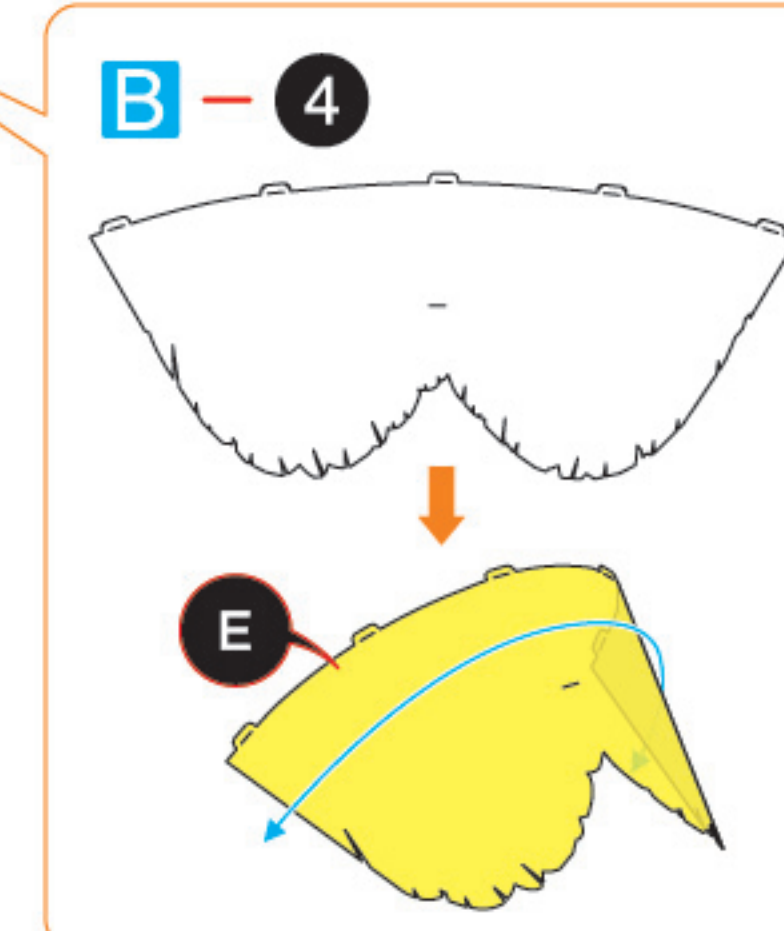
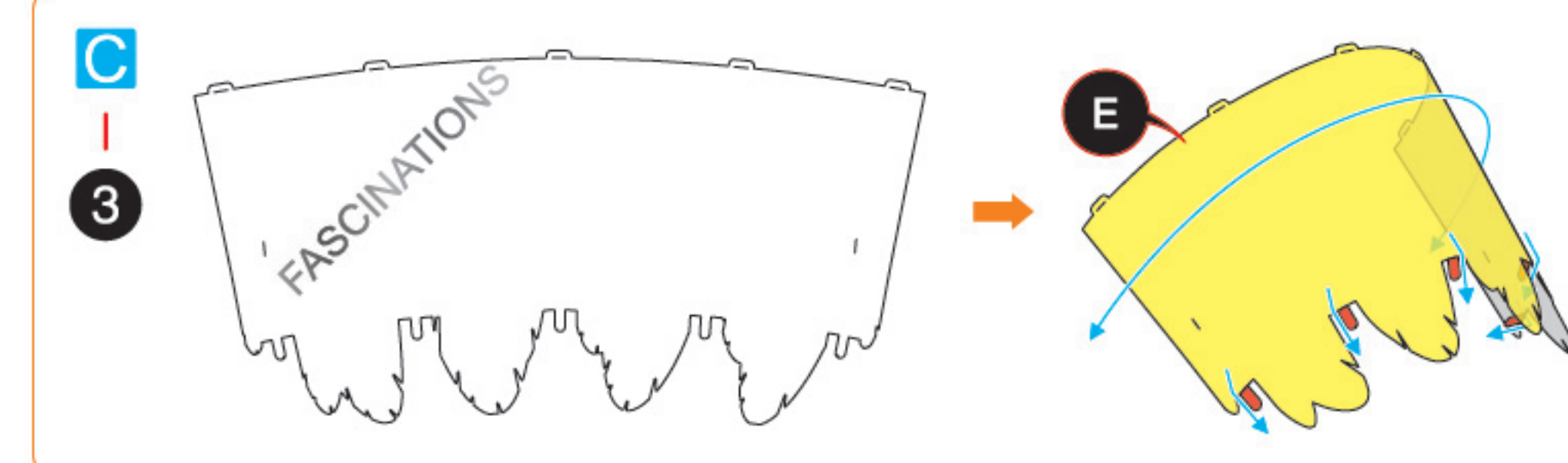
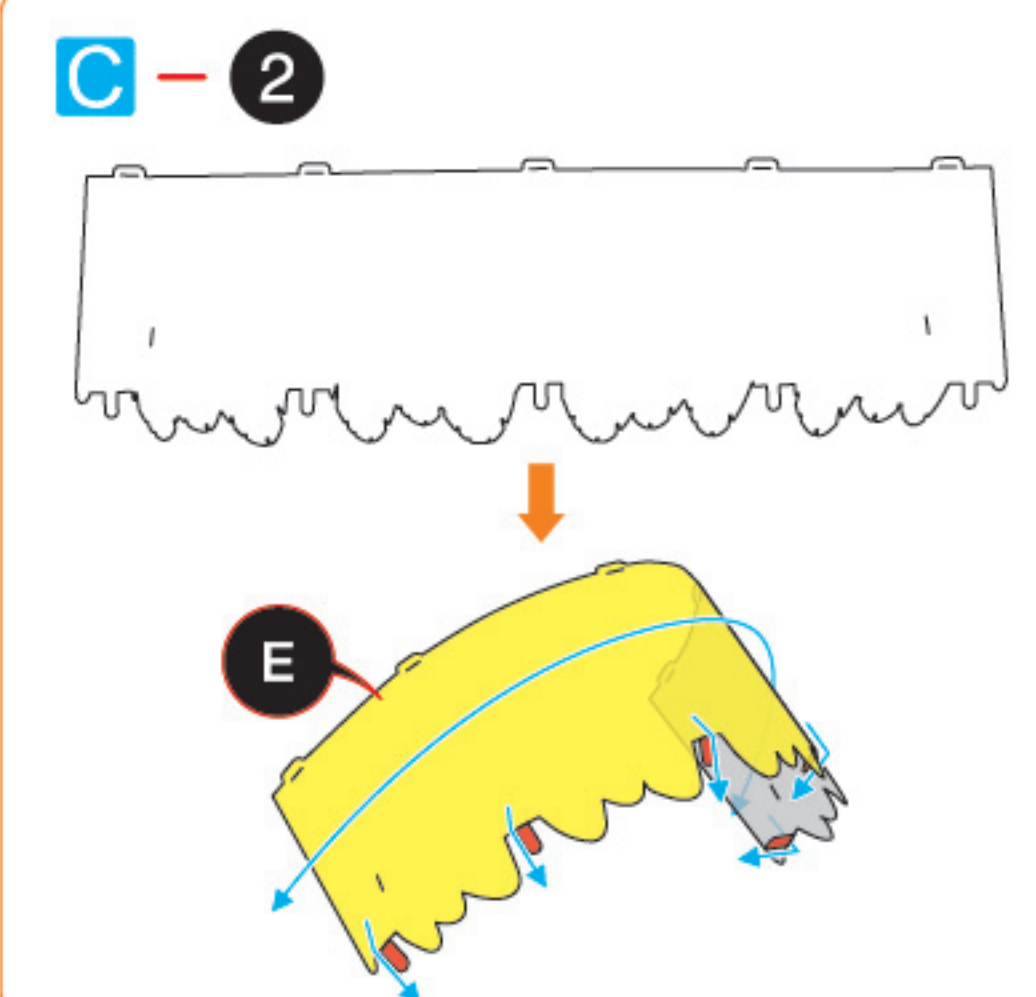
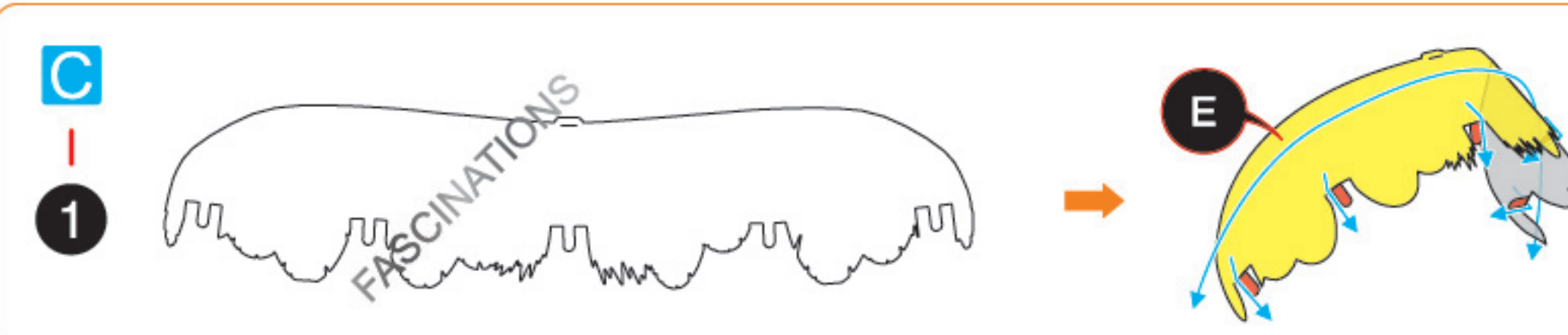


- Tweezers or needle nose pliers: helpful for folding parts, bending and twisting tabs.

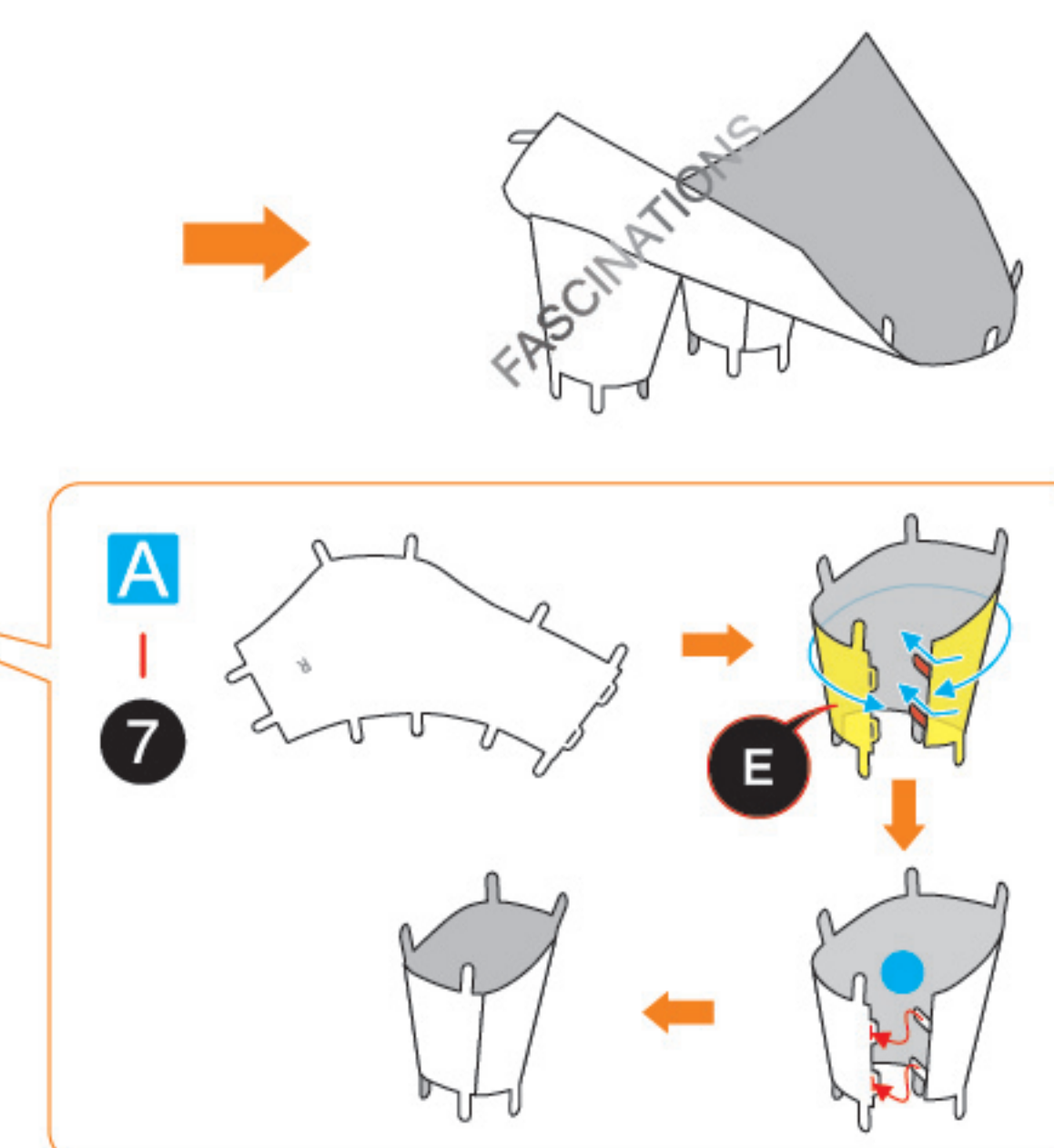
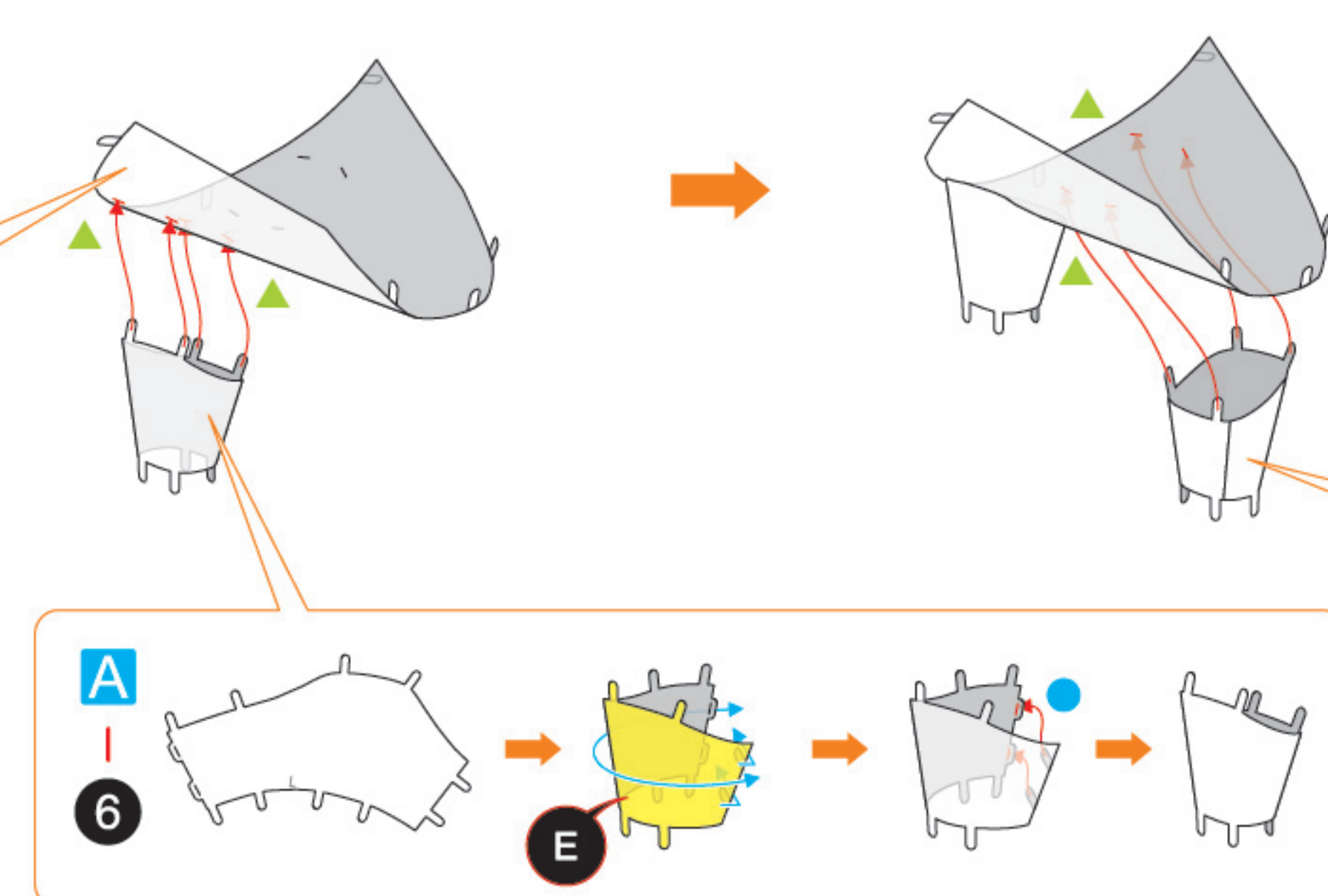
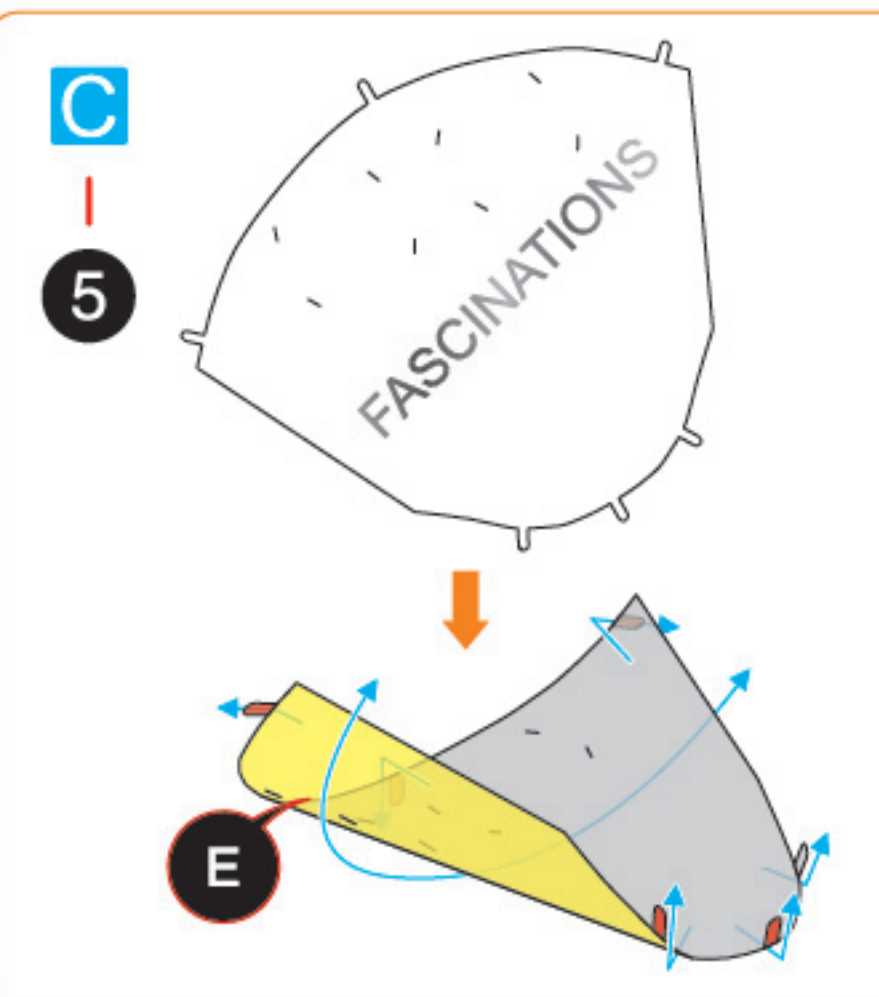


ASSEMBLY FLOW CHART

Step 1

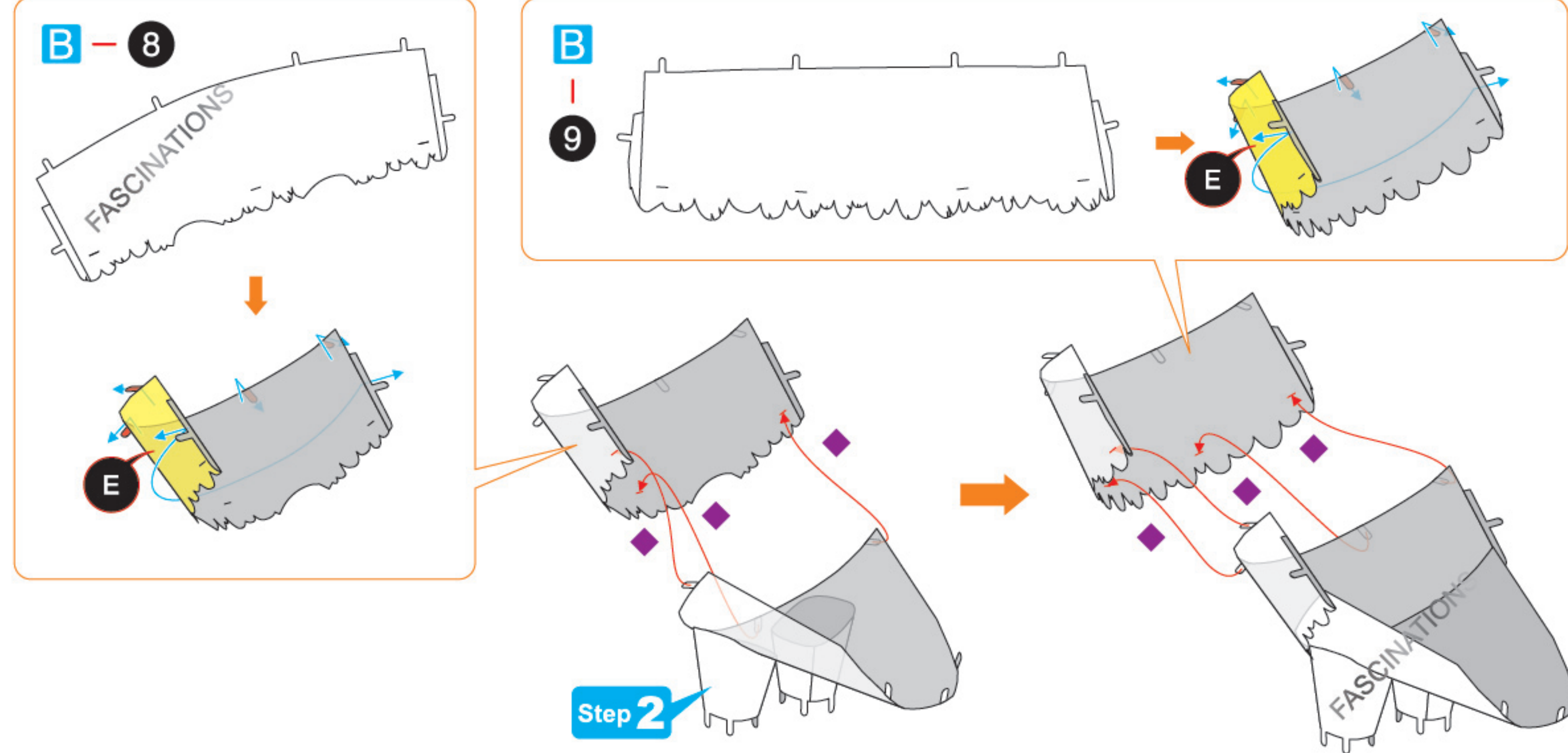


Step 2

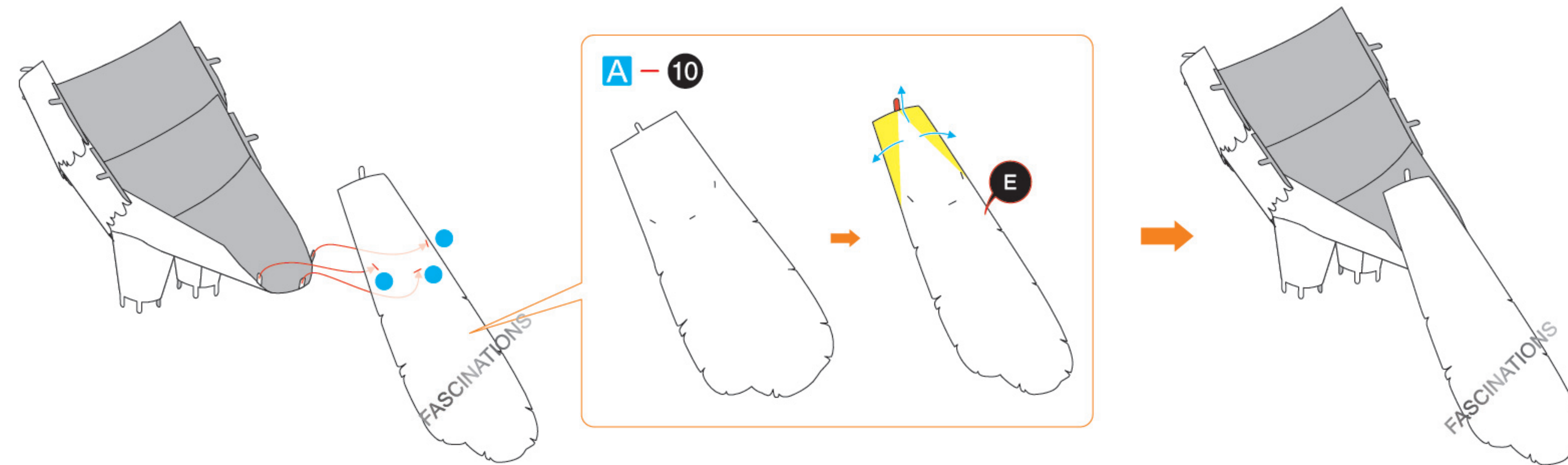


Step 3

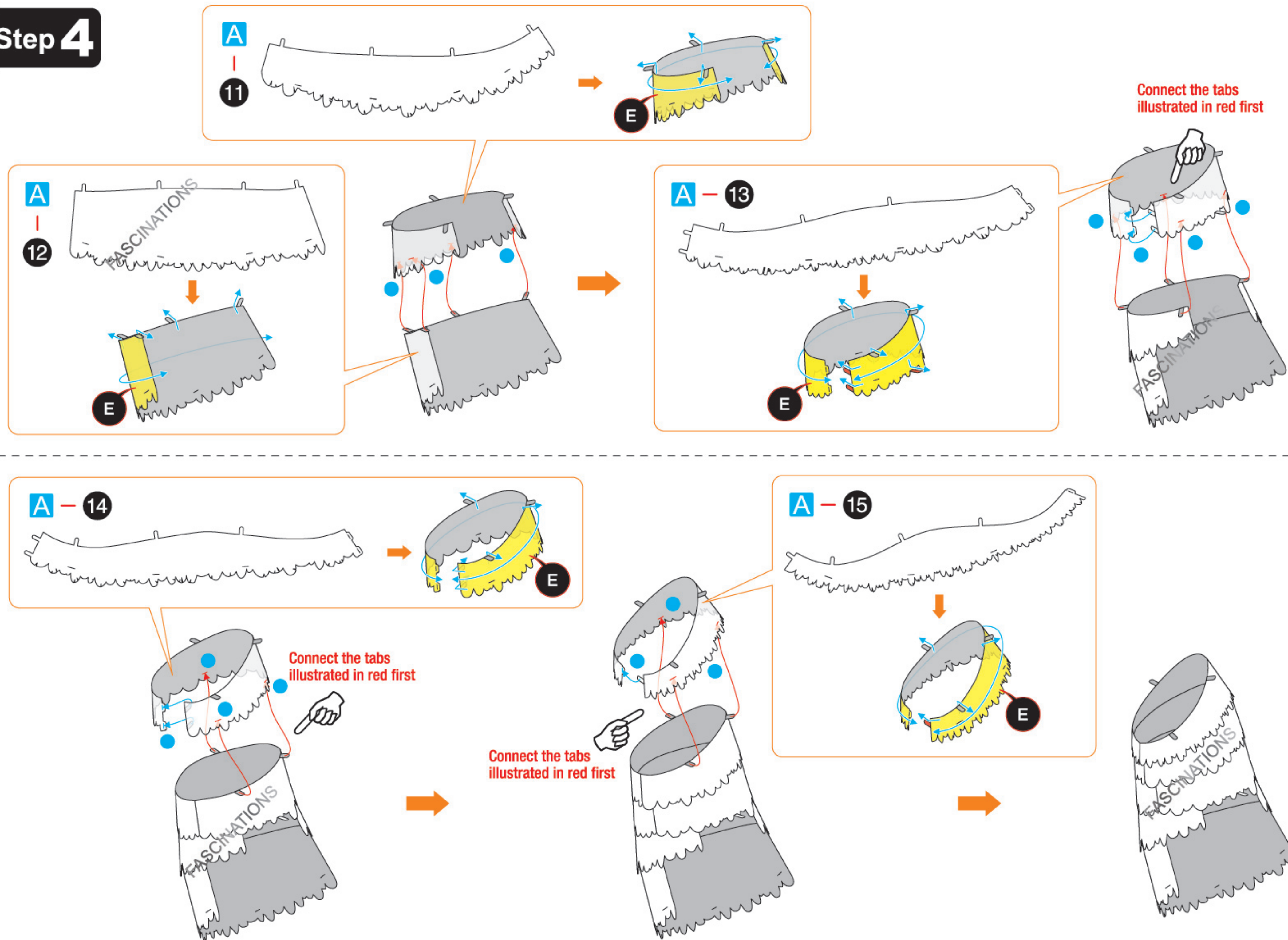
New symbol: 
Insert tabs and slightly twist them 45°
to hold parts together.
Finally, bend them up for a nice finish
with the colored side revealed.



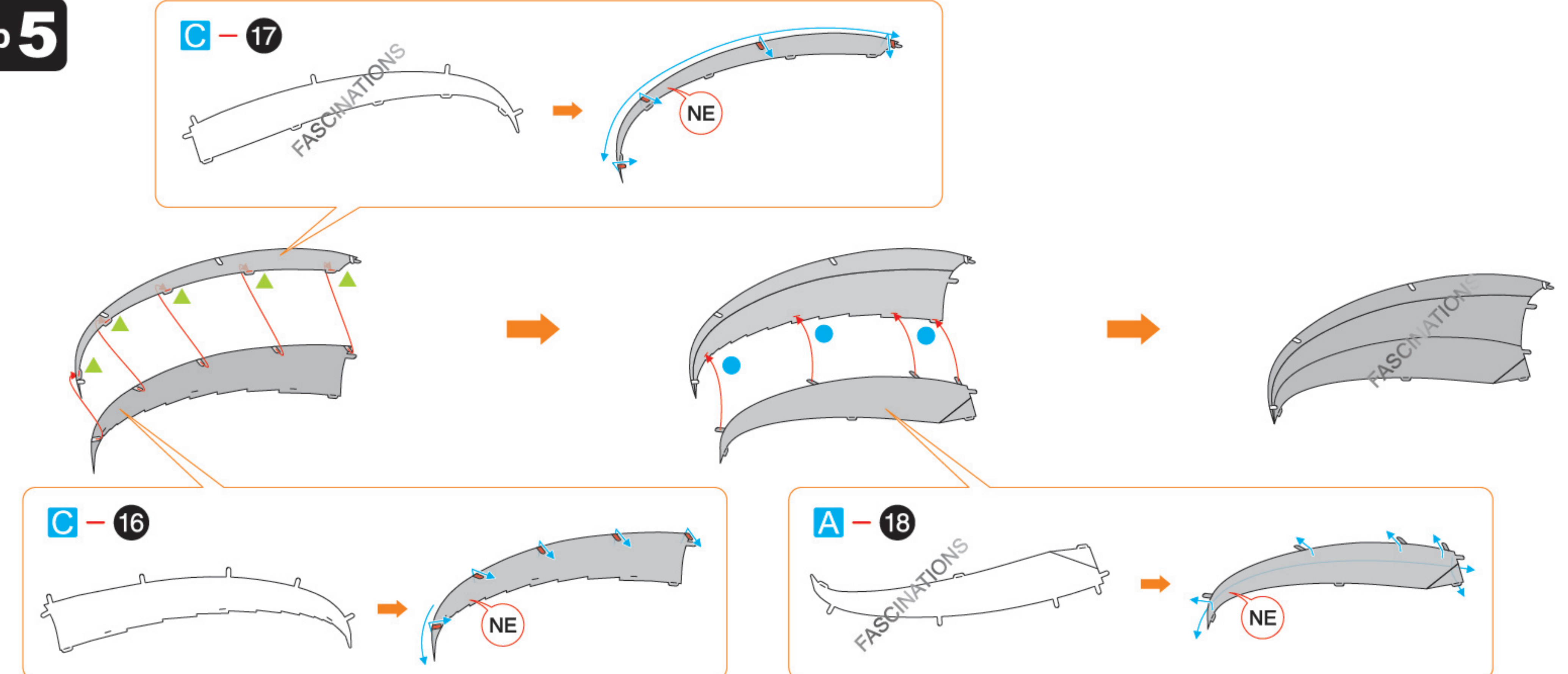
Step 2



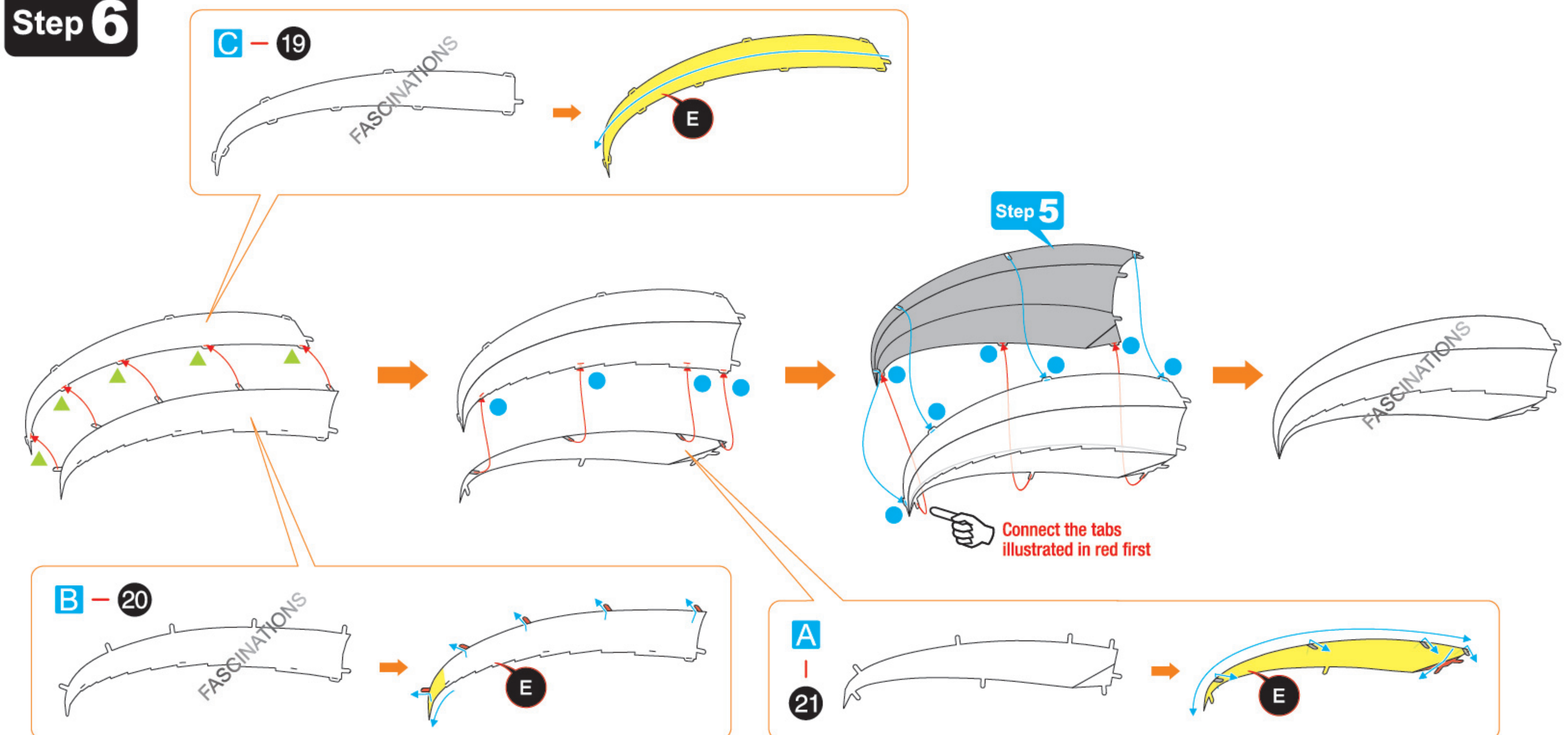
Step 4



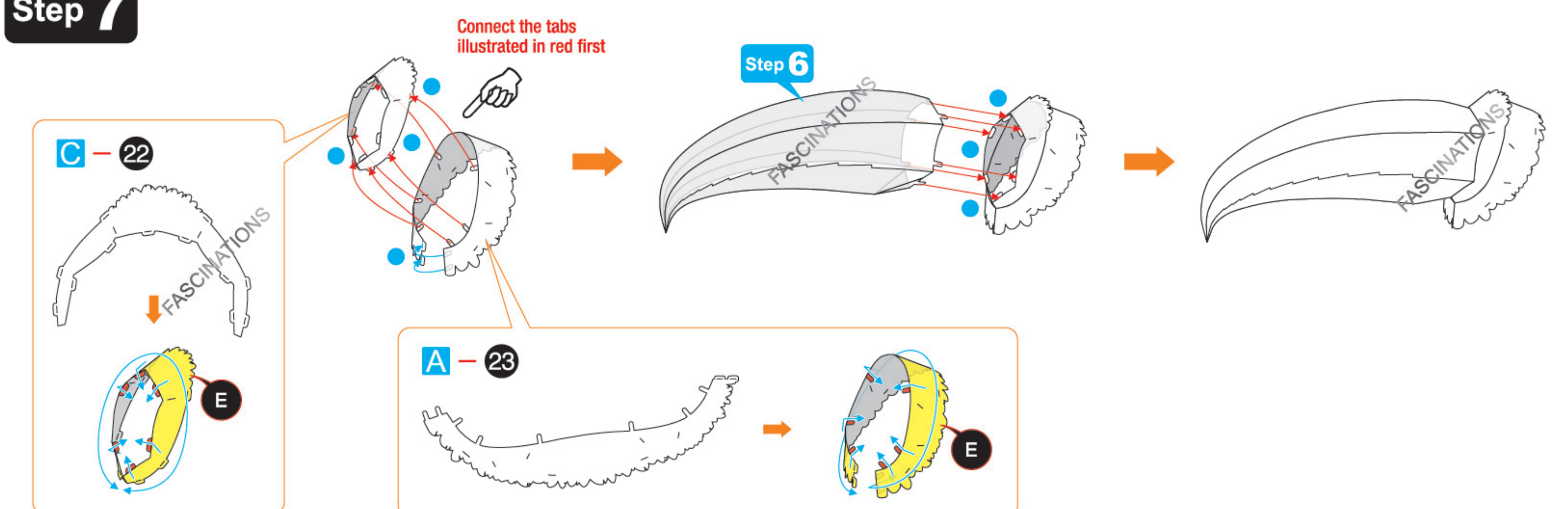
Step 5



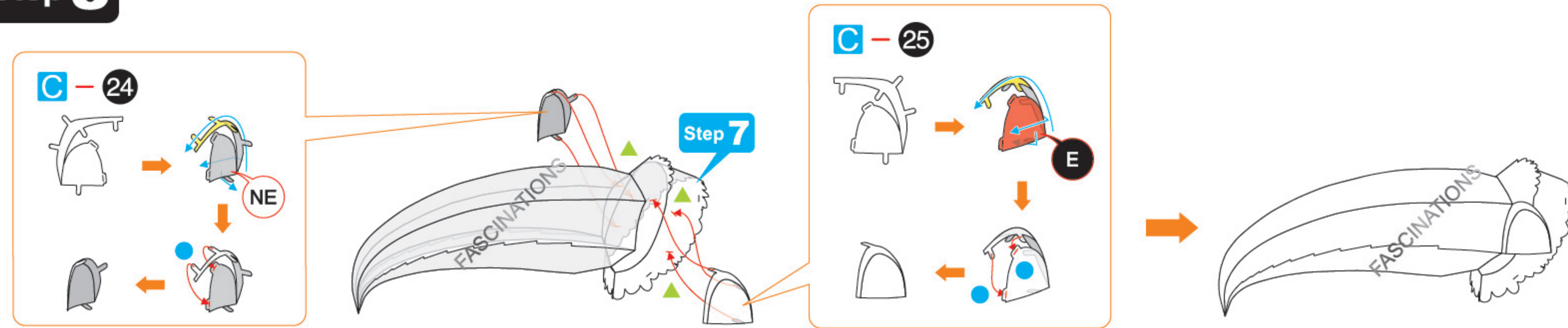
Step 6



Step 7

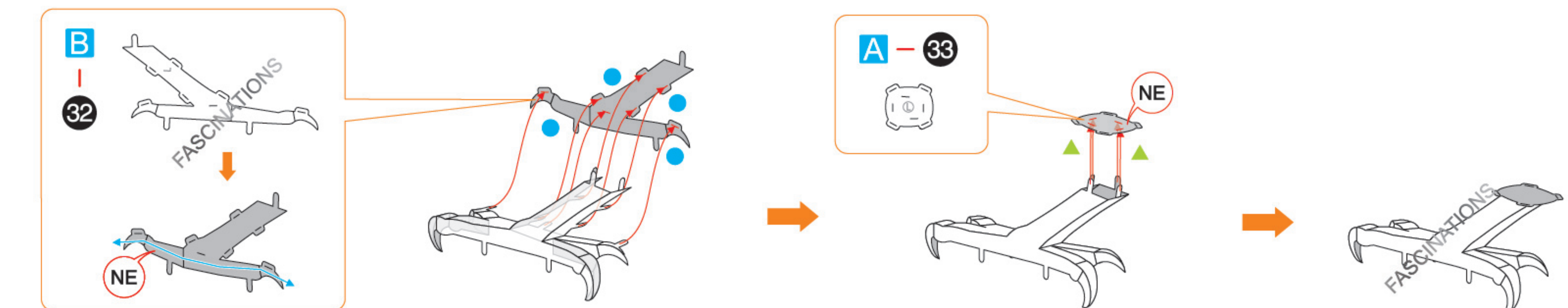
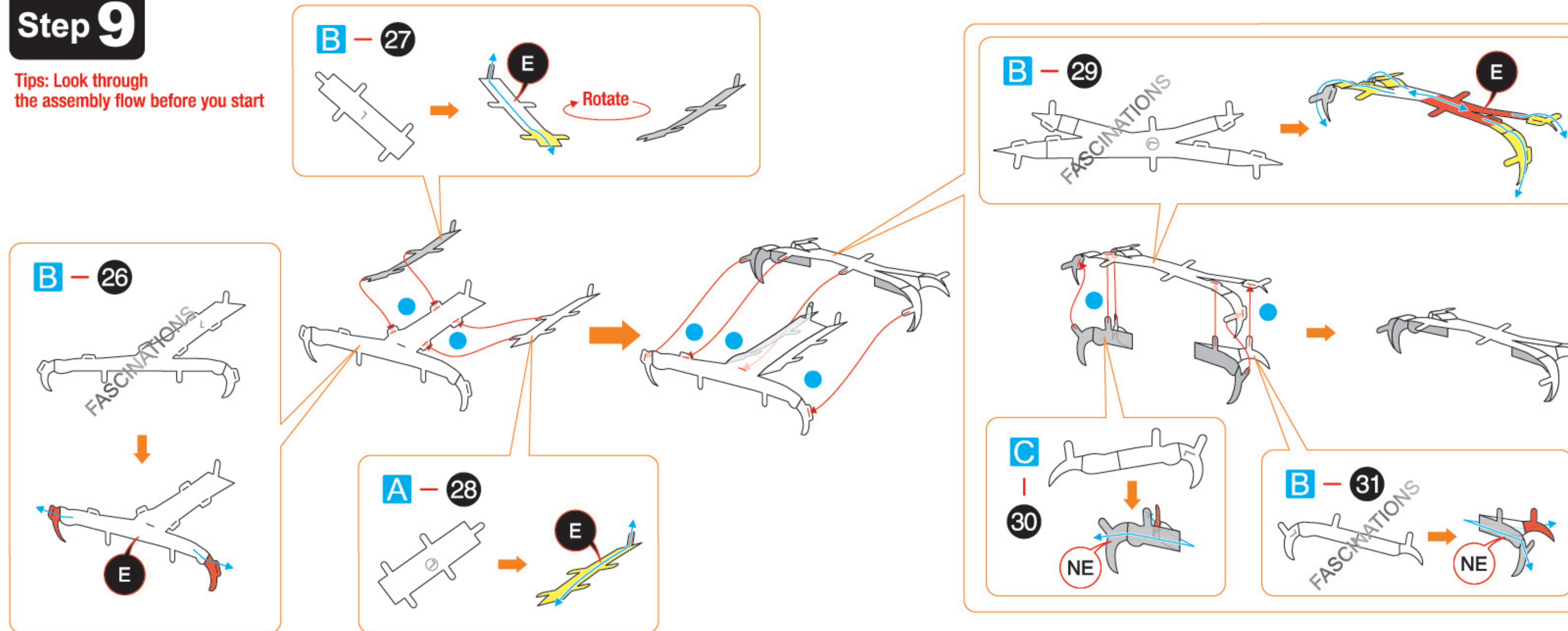


Step 8



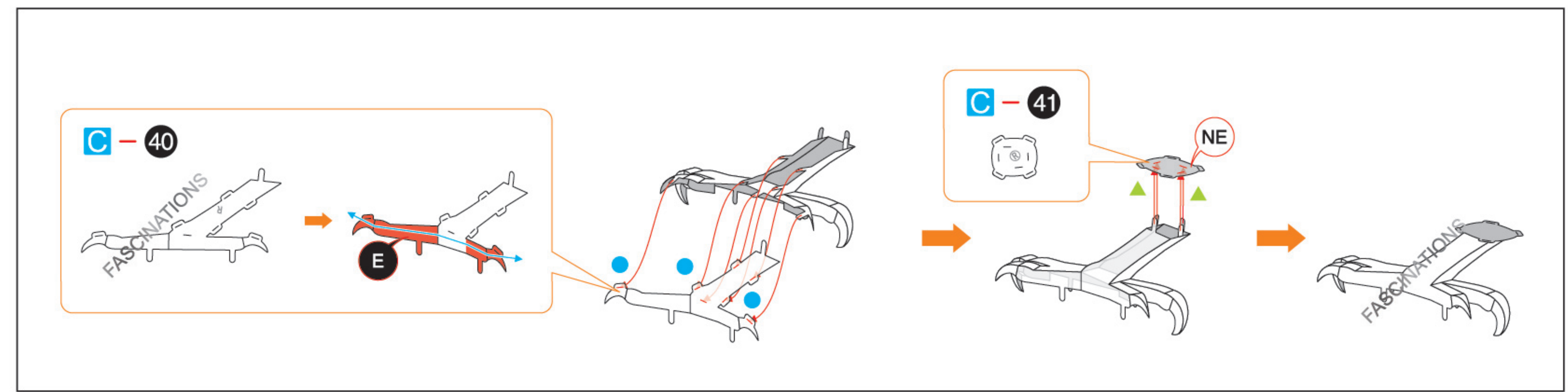
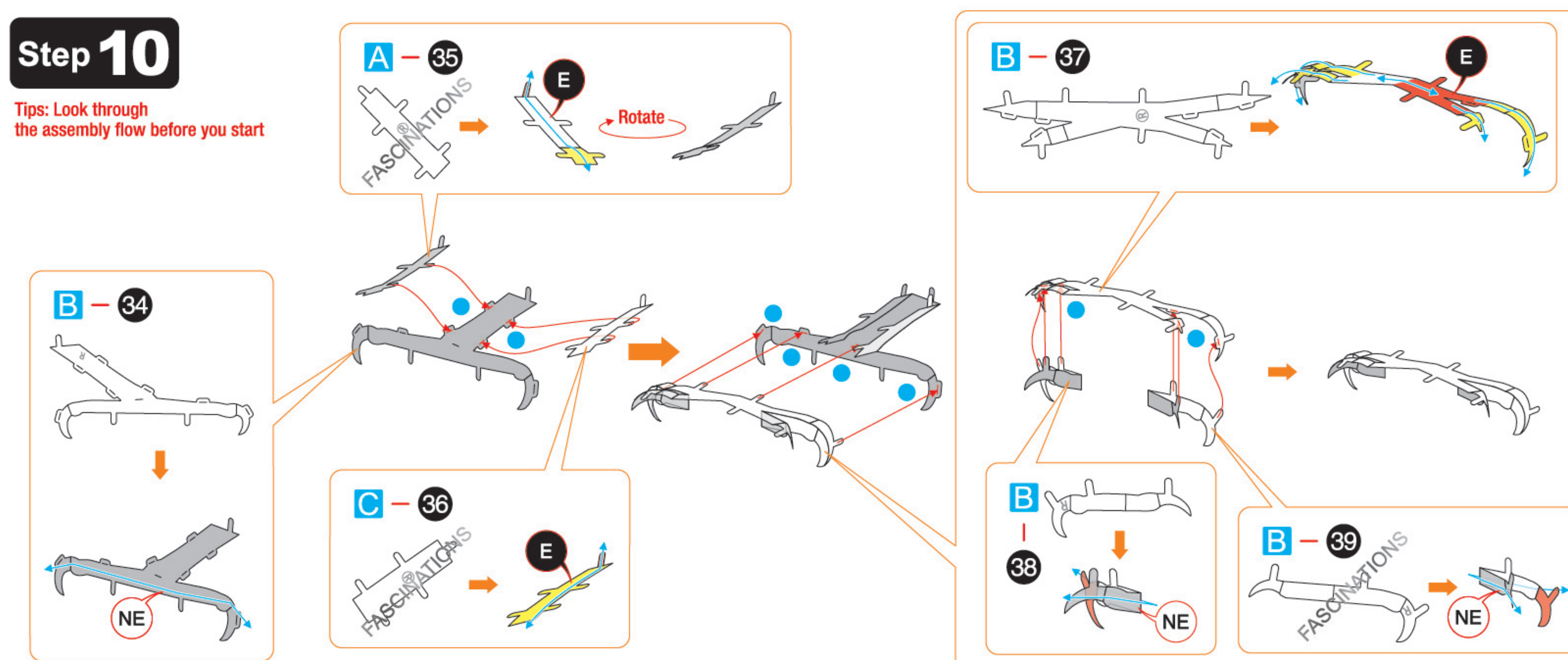
Step 9

Tips: Look through the assembly flow before you start

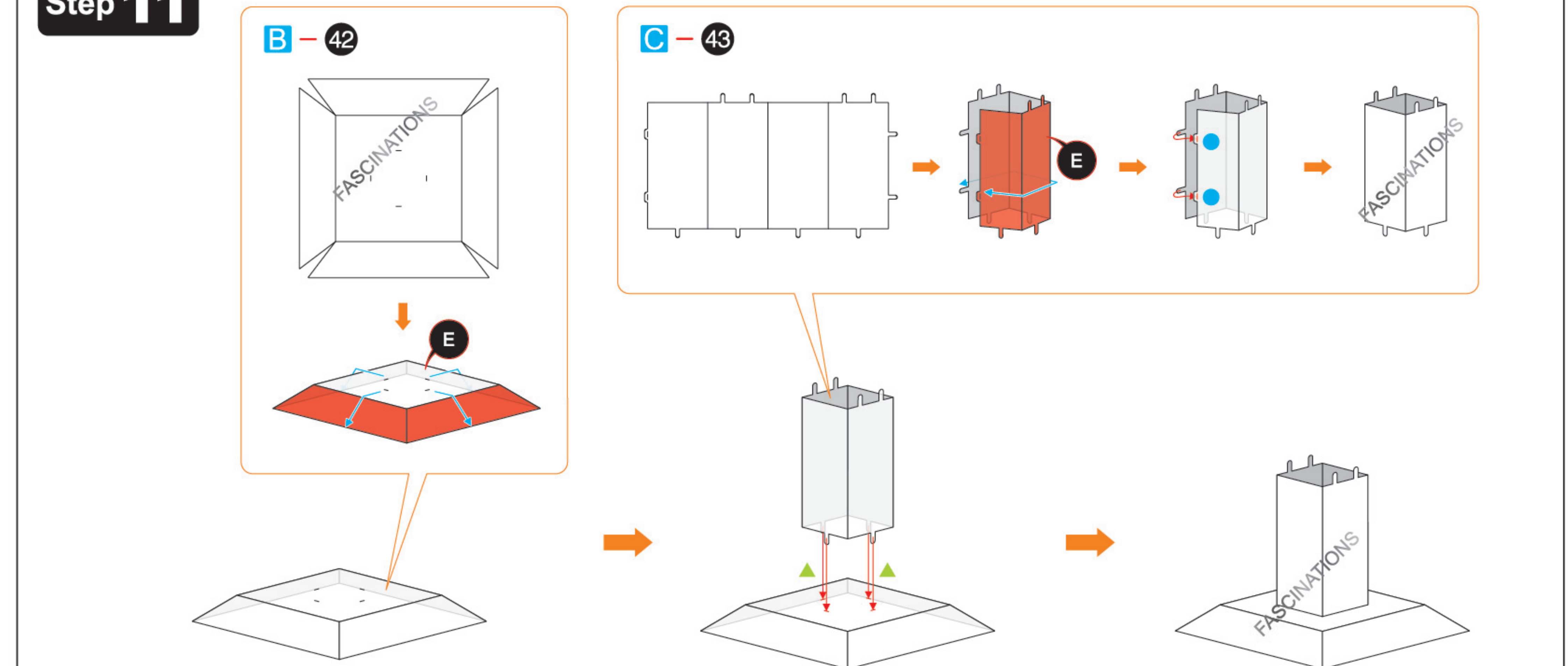


Step 10

Tips: Look through the assembly flow before you start

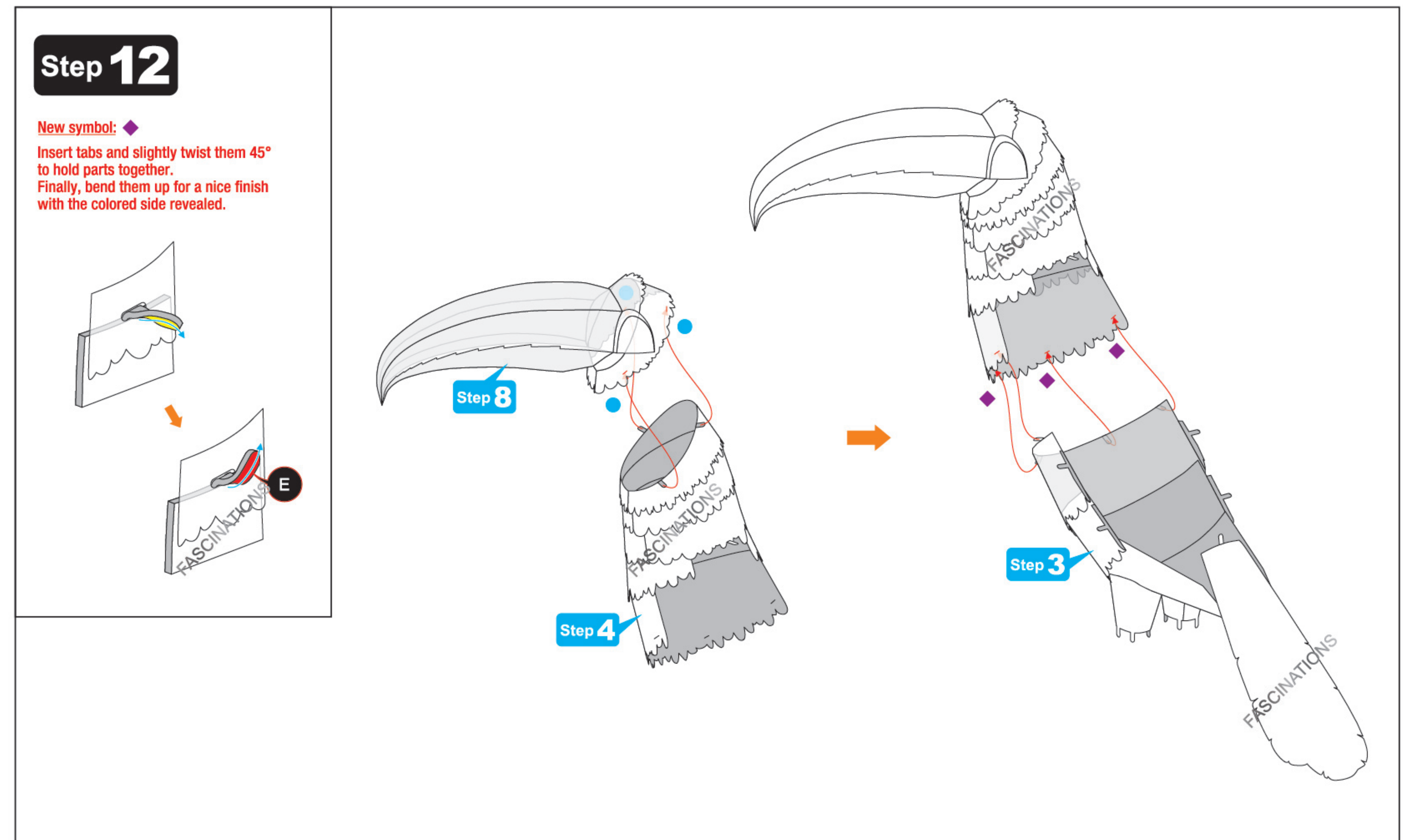


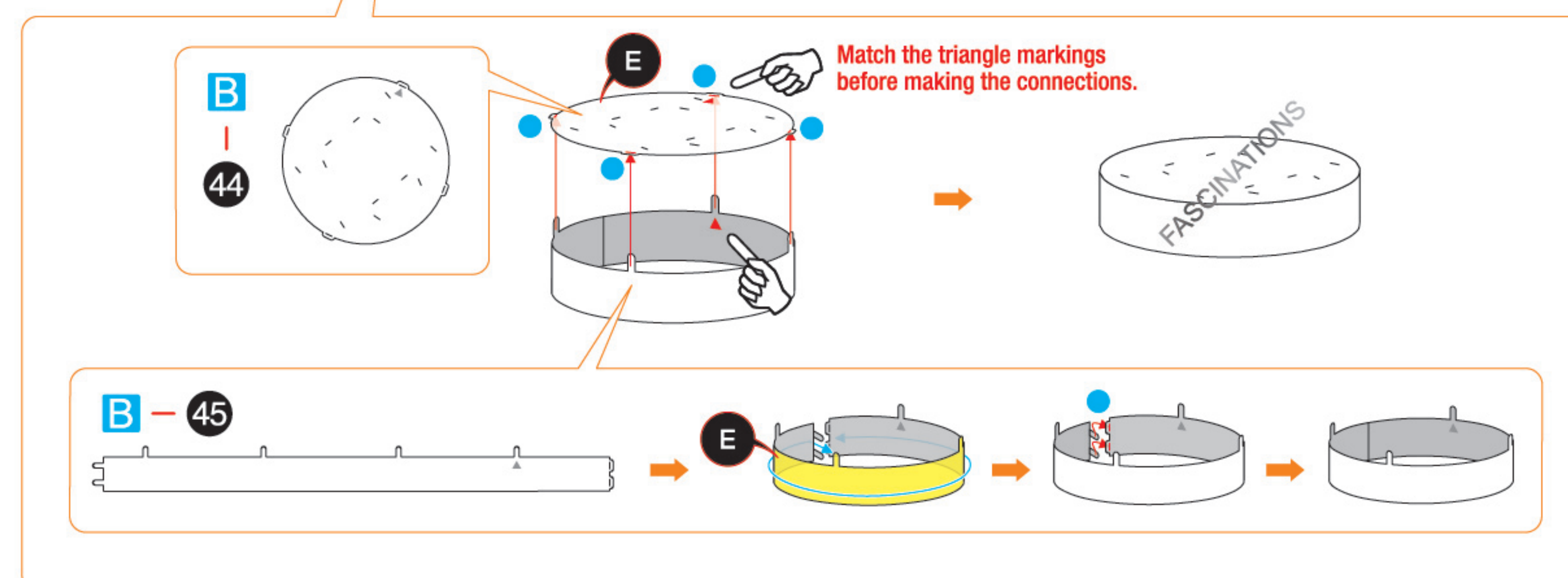
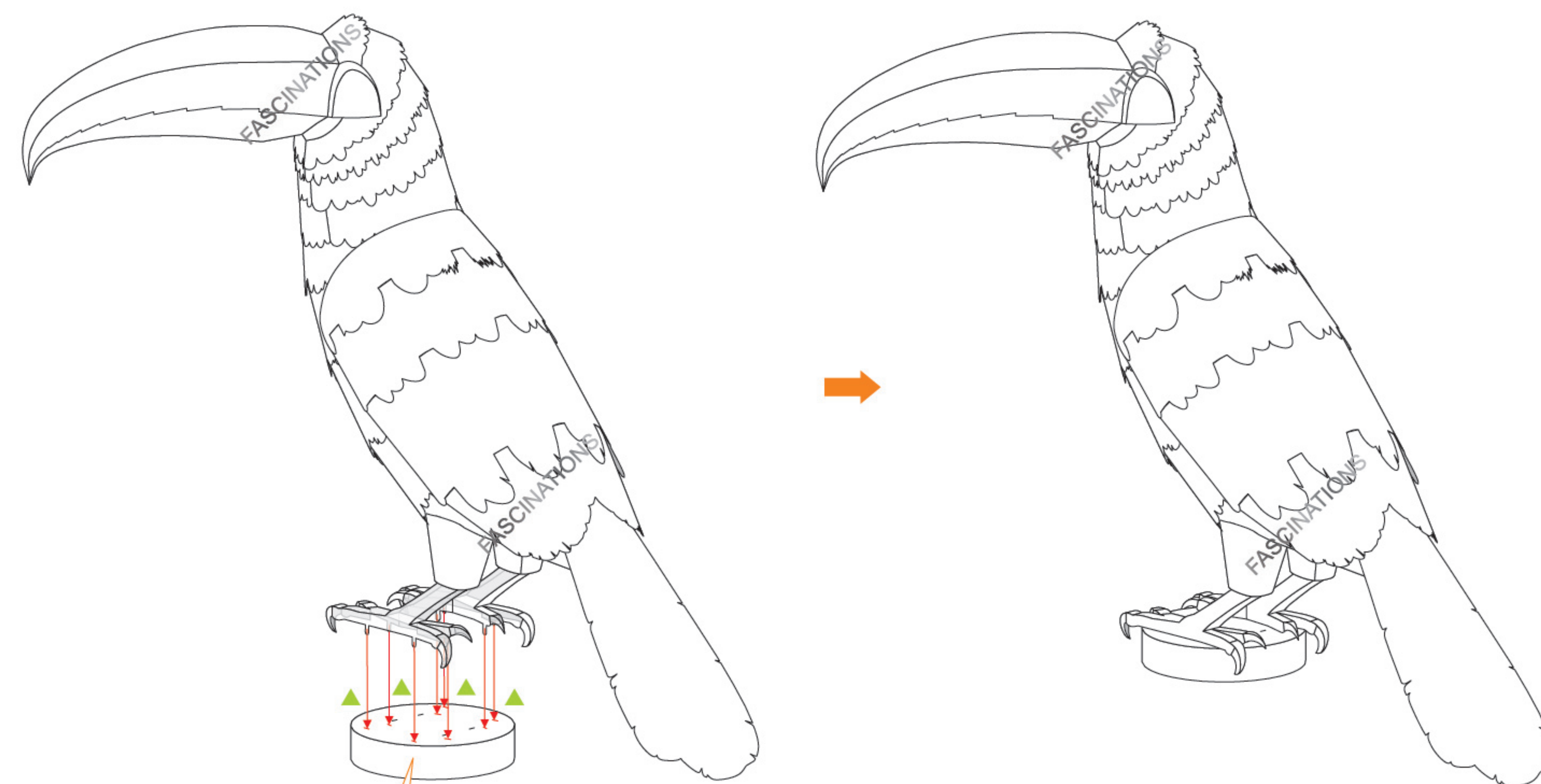
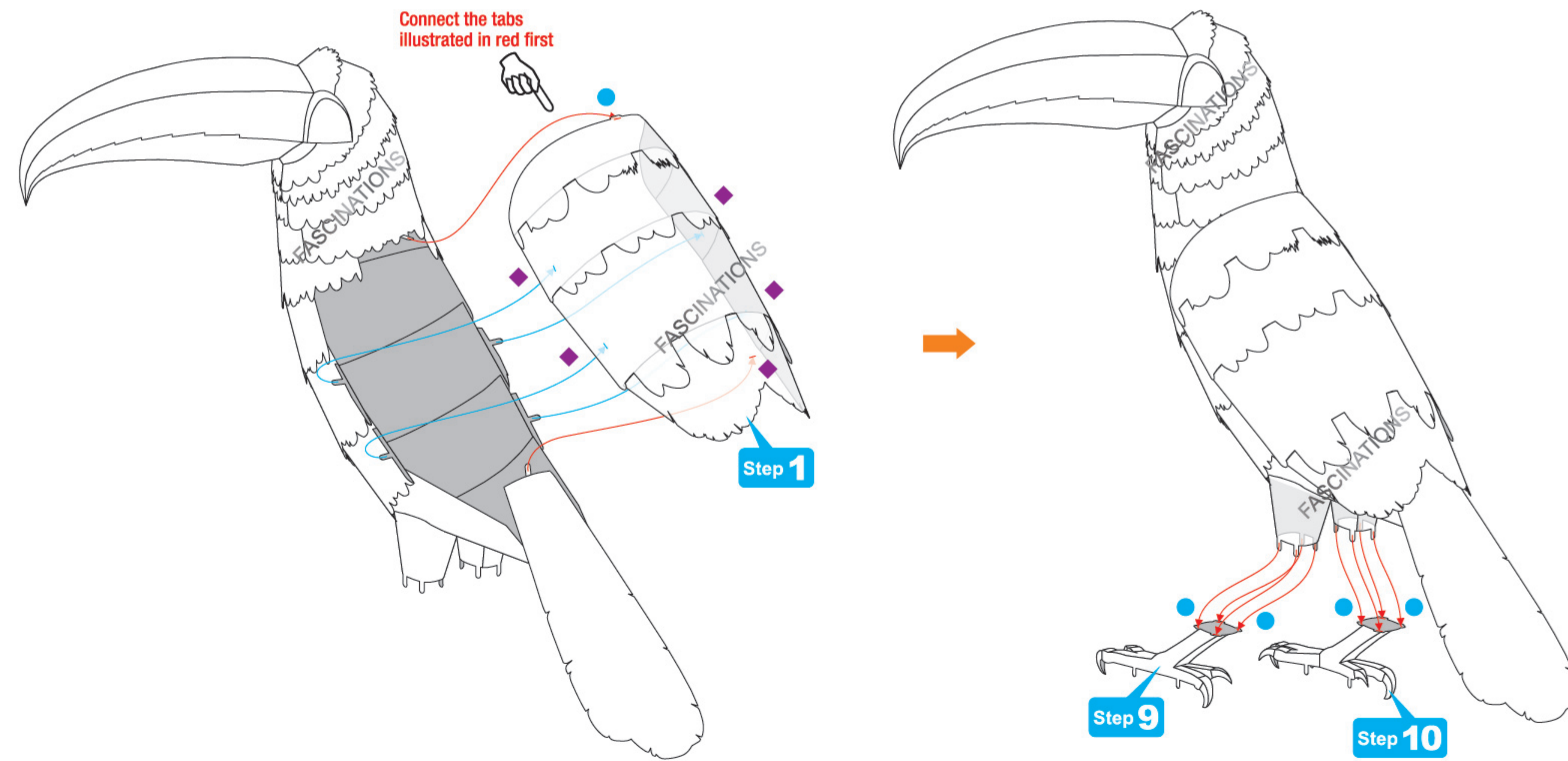
Step 11



Step 12

New symbol: 
Insert tabs and slightly twist them 45° to hold parts together.
Finally, bend them up for a nice finish with the colored side revealed.





Step 13

