



© MARVEL

BLACK PANTHER MMS501

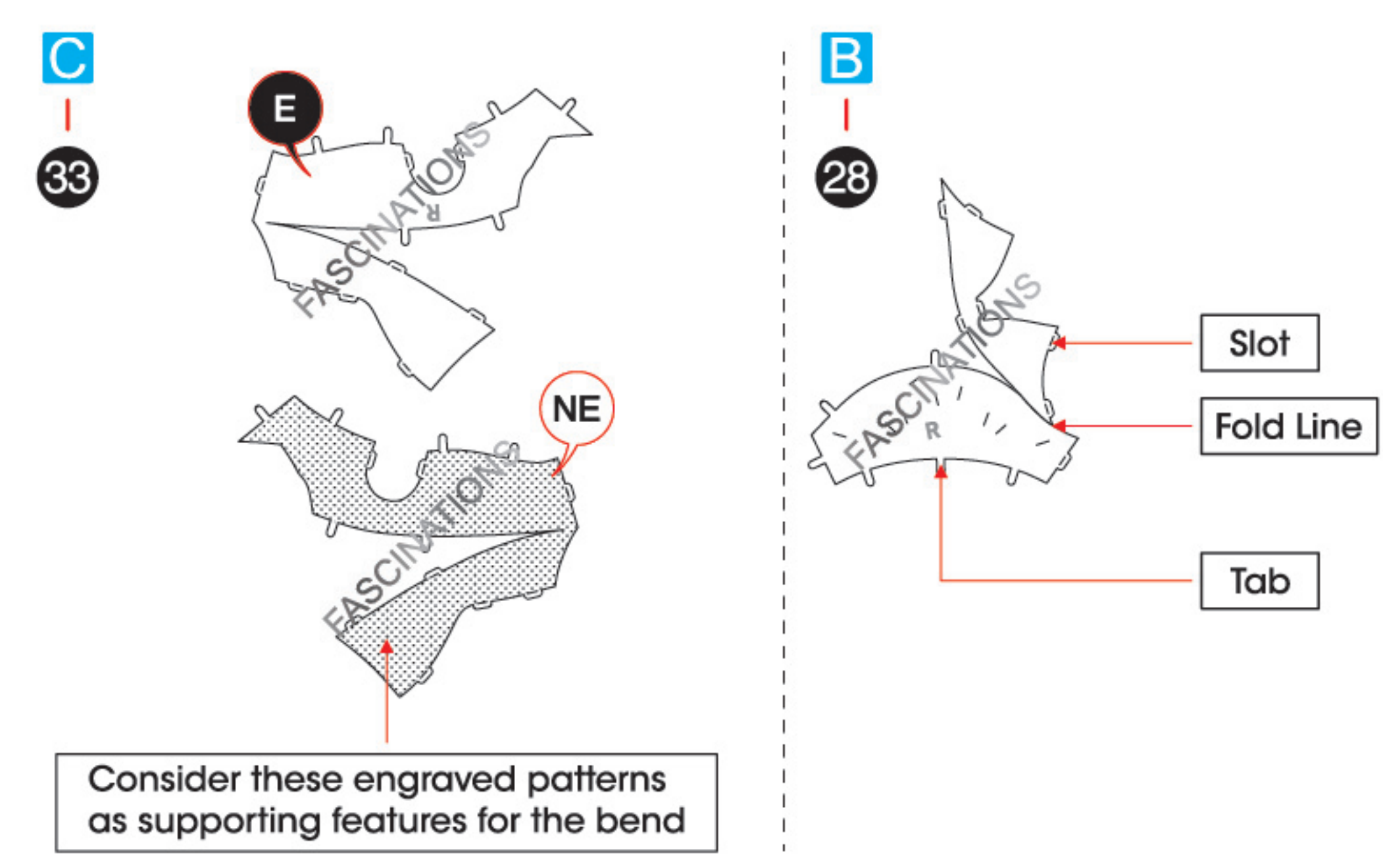


360°
view

It is highly recommended that you visit
www.metalearth.com/360/MMS501
to see the completed model before assembling your own

Go to www.metalearth.com/360/MMS501 to see the zoomable PDF version of this instruction sheet

TO CREATE THE BEST CONNECTIONS



Legends:

- E** Engraved/ Color side
- NE** Non - engraved/ Silver side
- Attention point
- Insert tab and bend 90 degrees
- Insert tab and twist 90 degrees

Recommended tools:

- Wire cutters: helpful for taking parts from the metal sheets.



- Tweezers or needle nose pliers: helpful for folding parts, bending and twisting tabs.



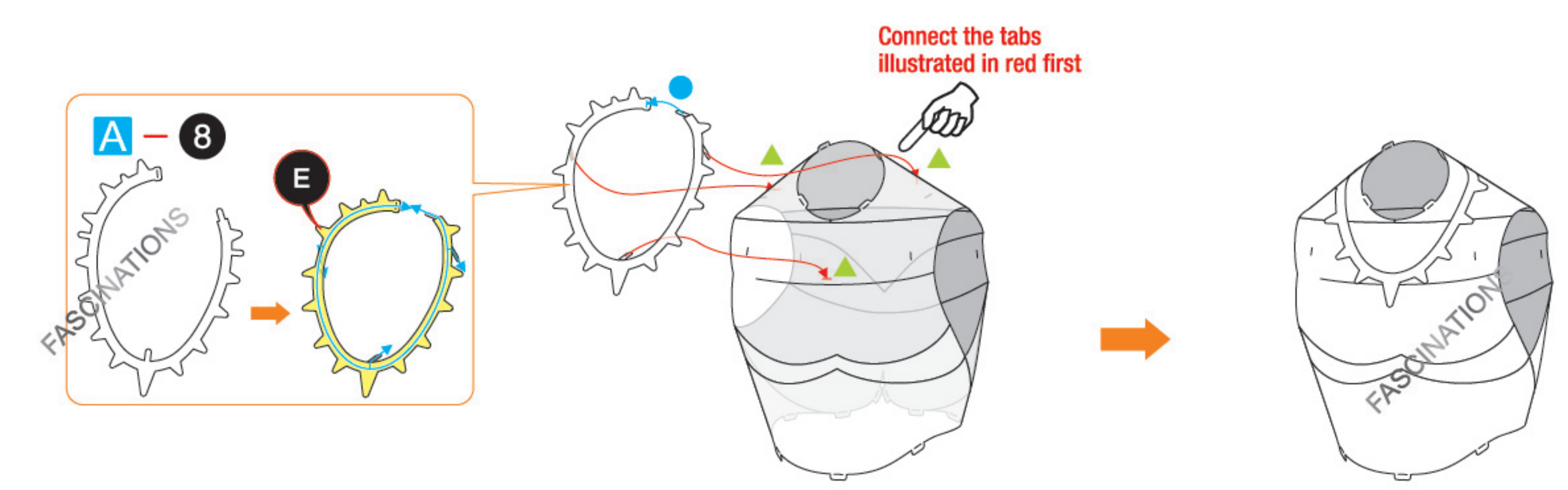
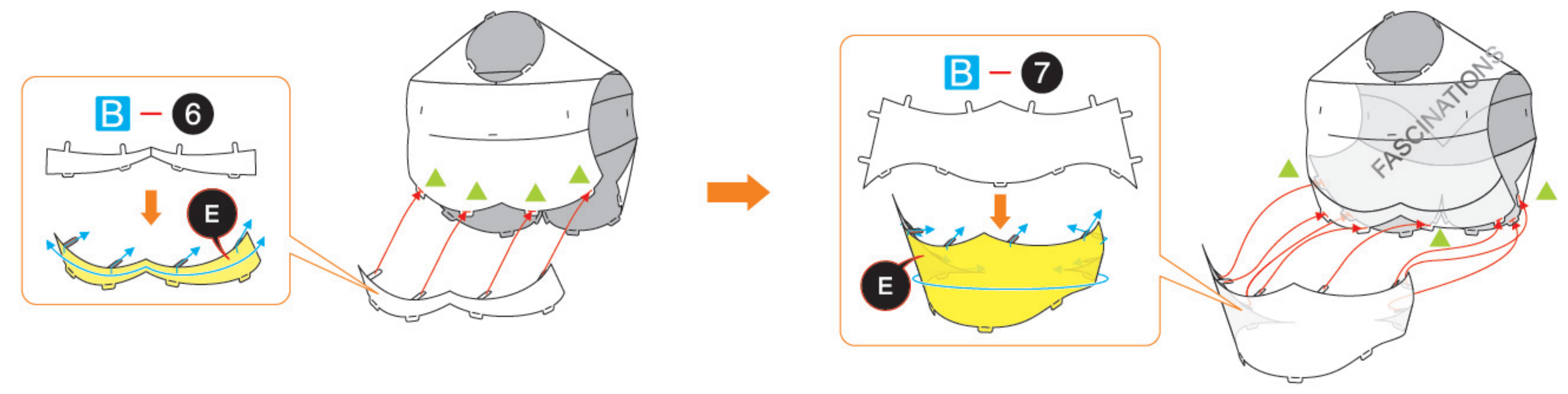
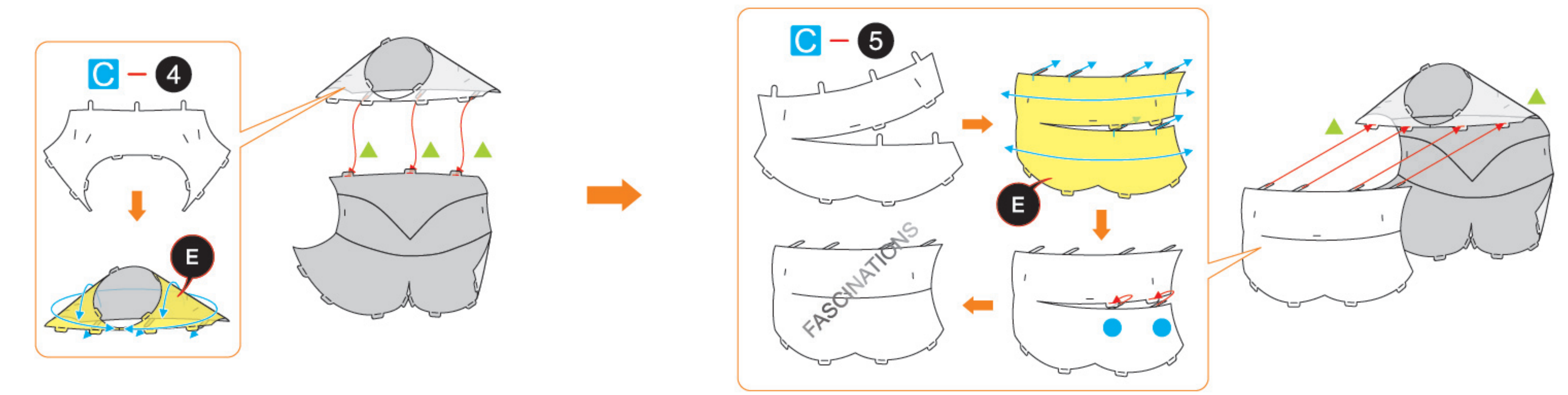
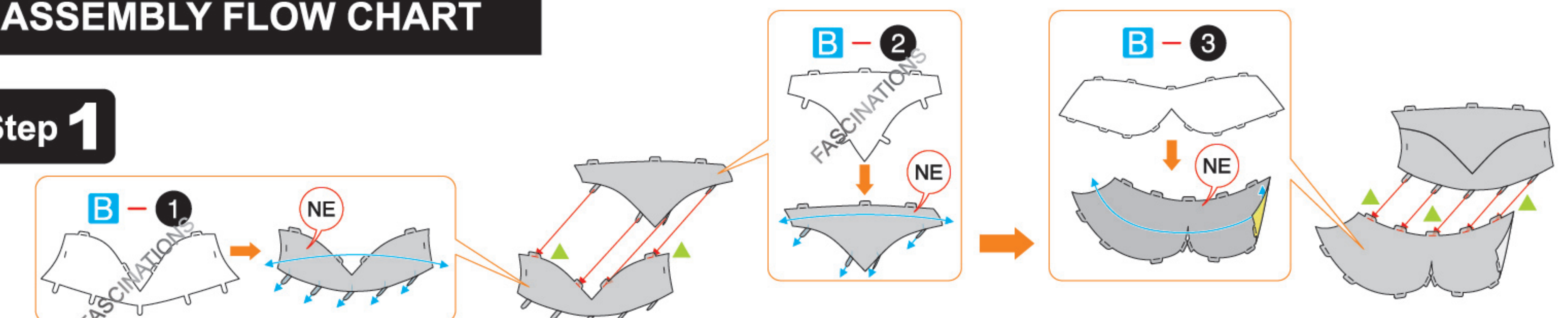
Assembly tip:

If needed, slightly twist tabs to hold parts together then untwist and bend them down for a nice finish.

- Yellow areas should be curled
- Red areas should be folded

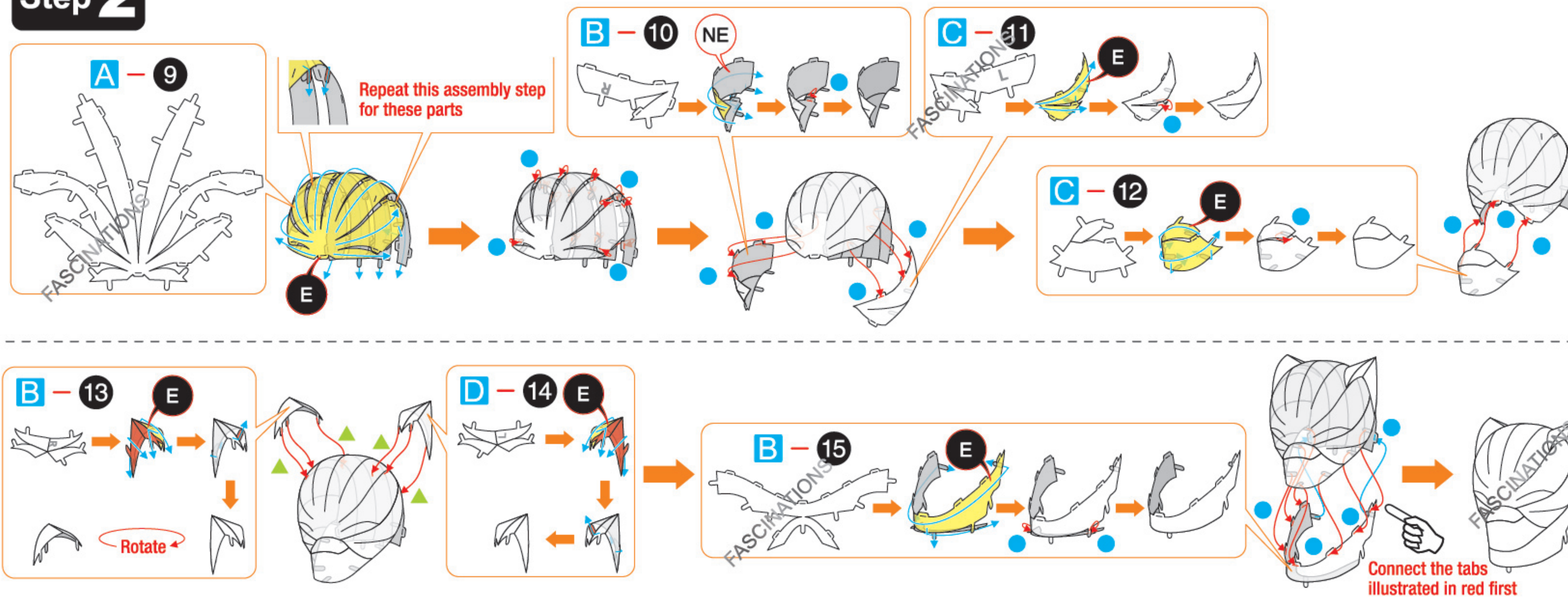
ASSEMBLY FLOW CHART

Step 1

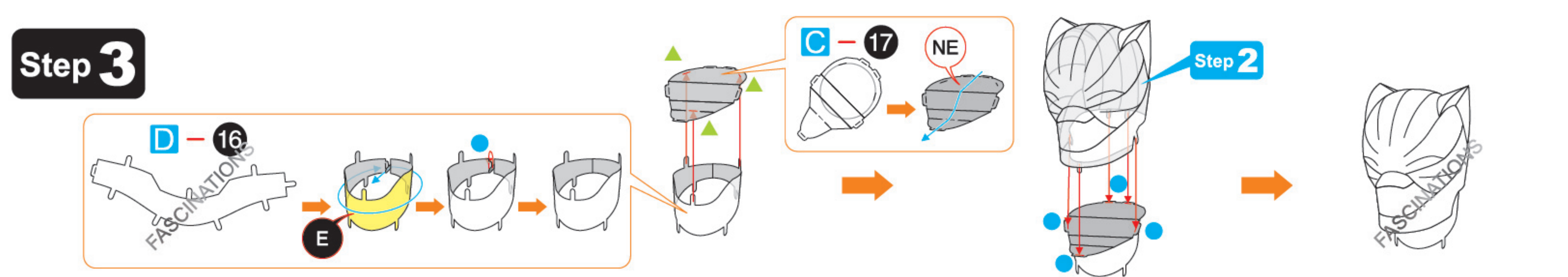


In order to avoid possible injury from sharp edges, please carefully discard the metal sheets after parts have been removed.

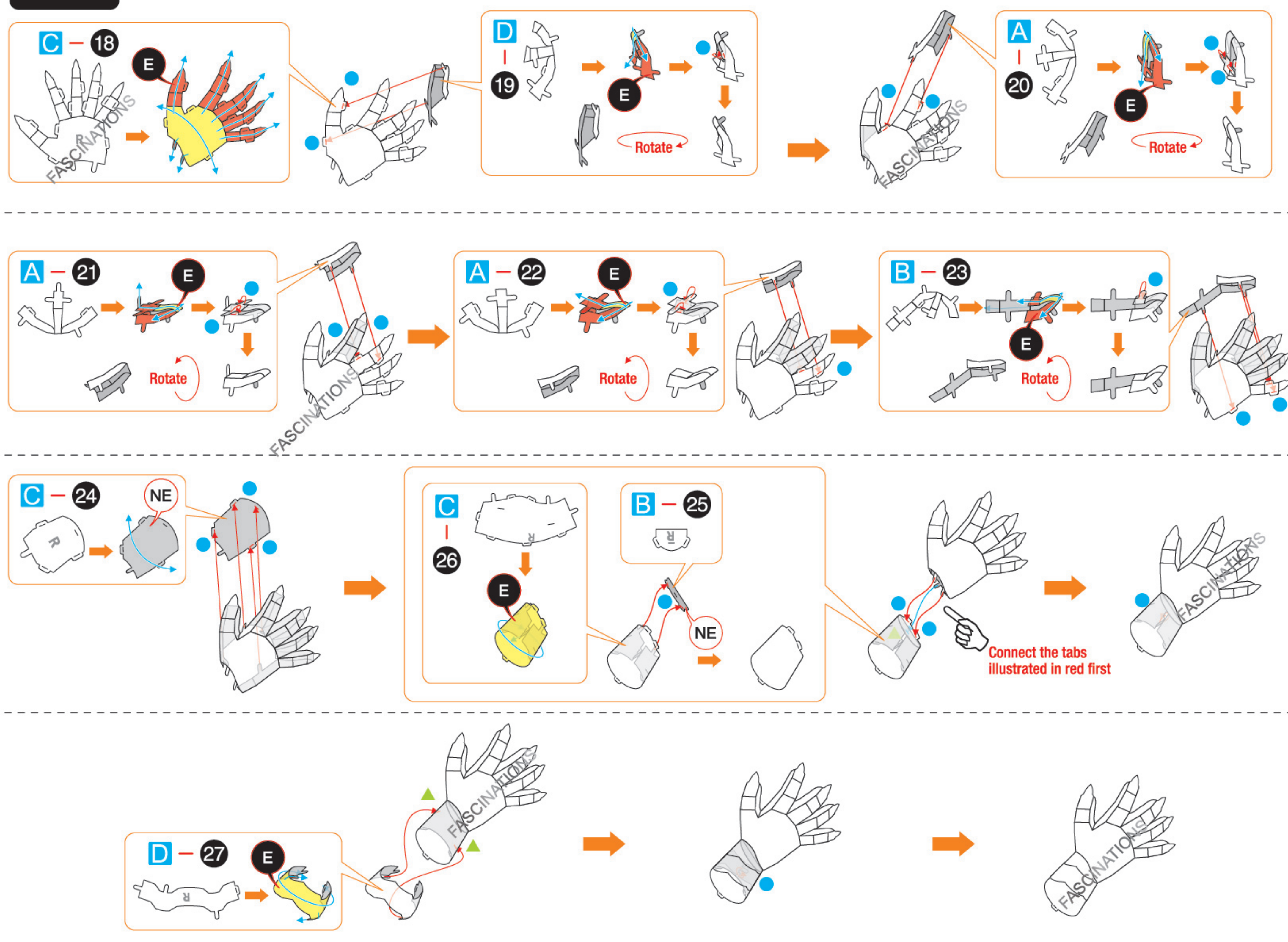
Step 2



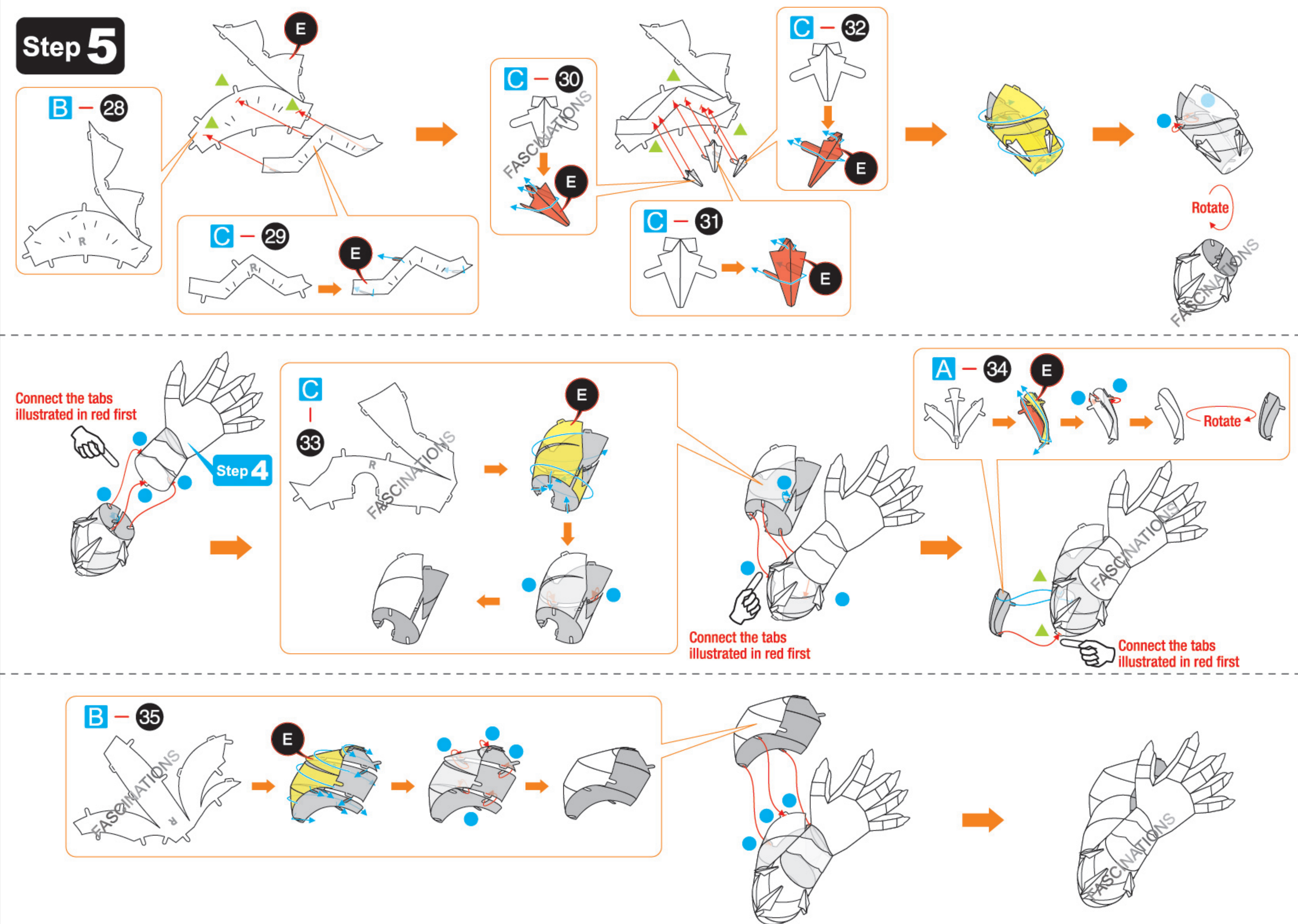
Step 3



Step 4



Step 5



Step 6

