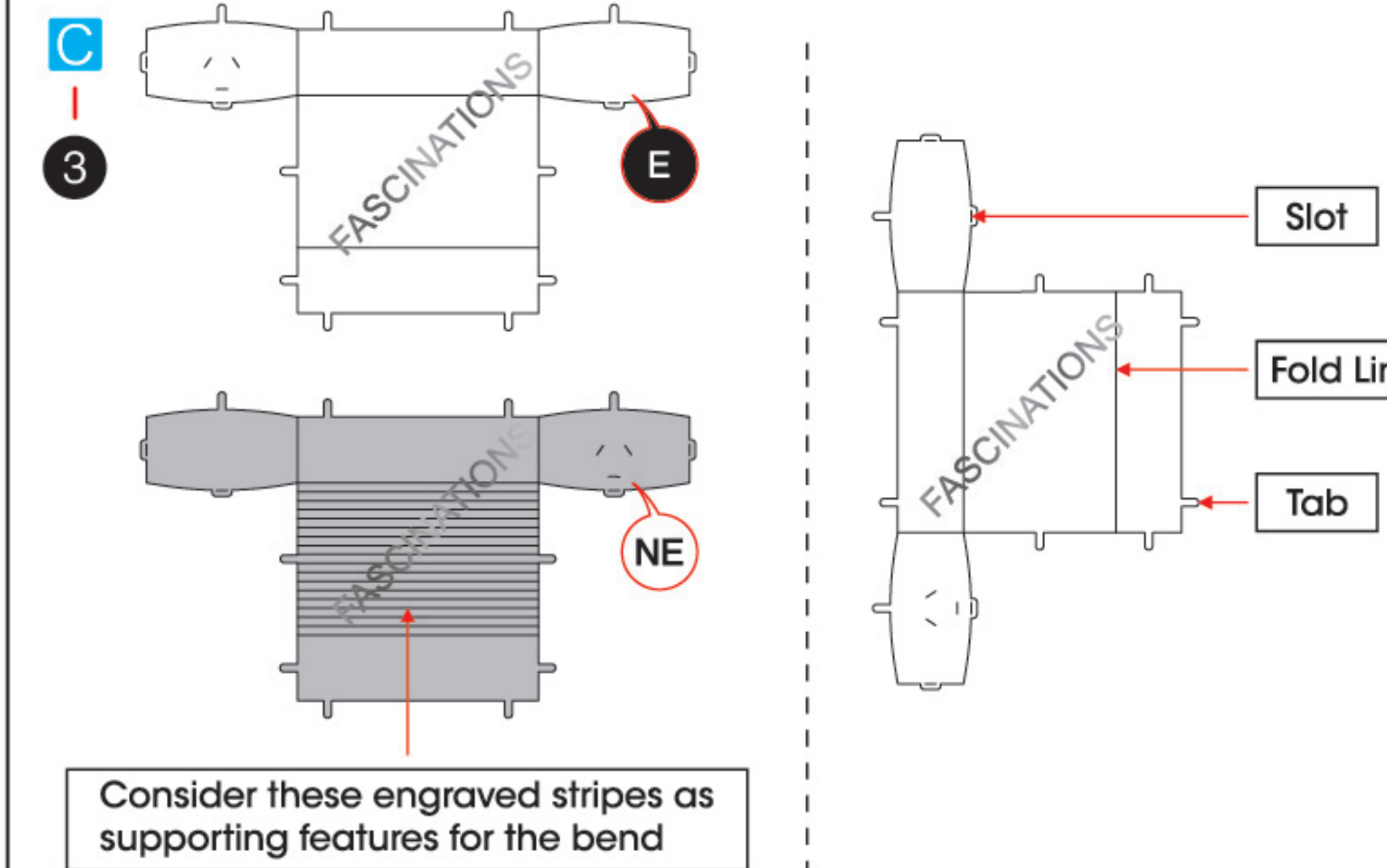


GRAND PIANO
ME1028



It is highly recommended that you visit www.metalearth.com/360/ME1028 to see the completed model before assembling your own

TO CREATE THE BEST CONNECTIONS



Legends:

- E** Engraved / Color side
- NE** Non - engraved / Silver side
- Attention point
- Insert tab and bend 90 degrees
- Insert tab and twist 90 degrees

Recommended tools:

- Wire cutters: helpful for taking parts from the metal sheets.
- Tweezers or needle nose pliers: helpful for folding parts, bending and twisting tabs.

Assembly tip:

If needed, slightly twist tabs to hold parts together then untwist and bend them down for a nice finish.

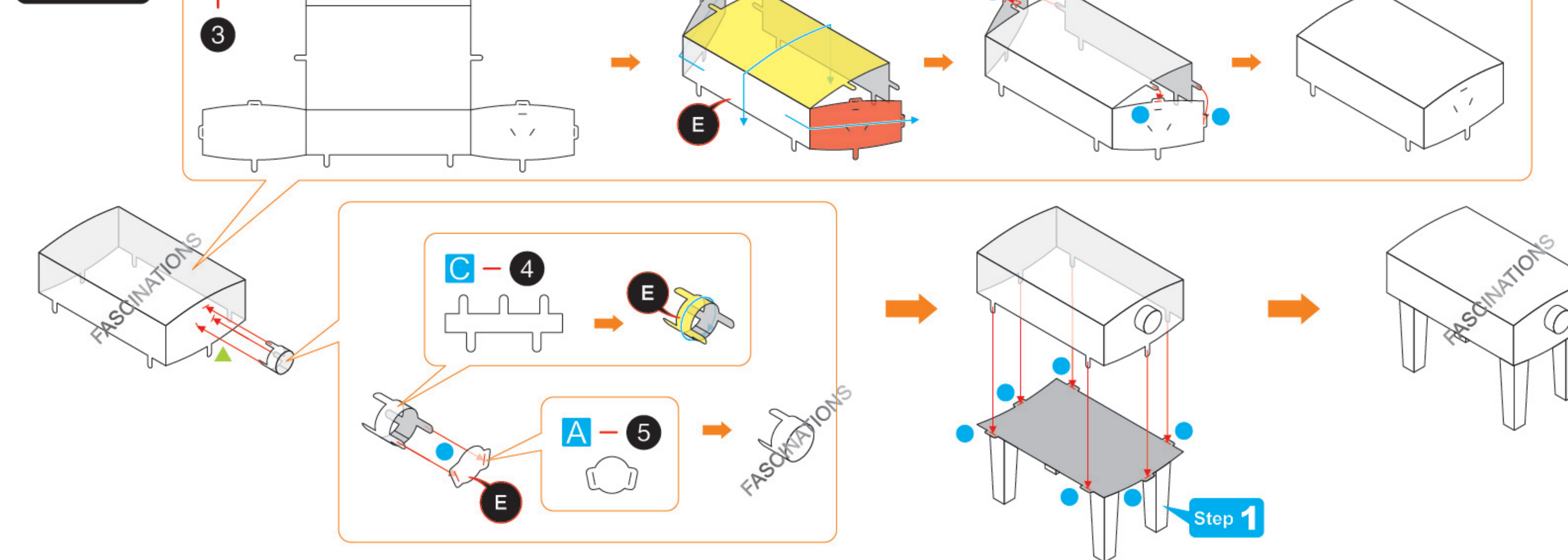
- Yellow areas should be curled
- Red areas should be folded

ASSEMBLY FLOW CHART

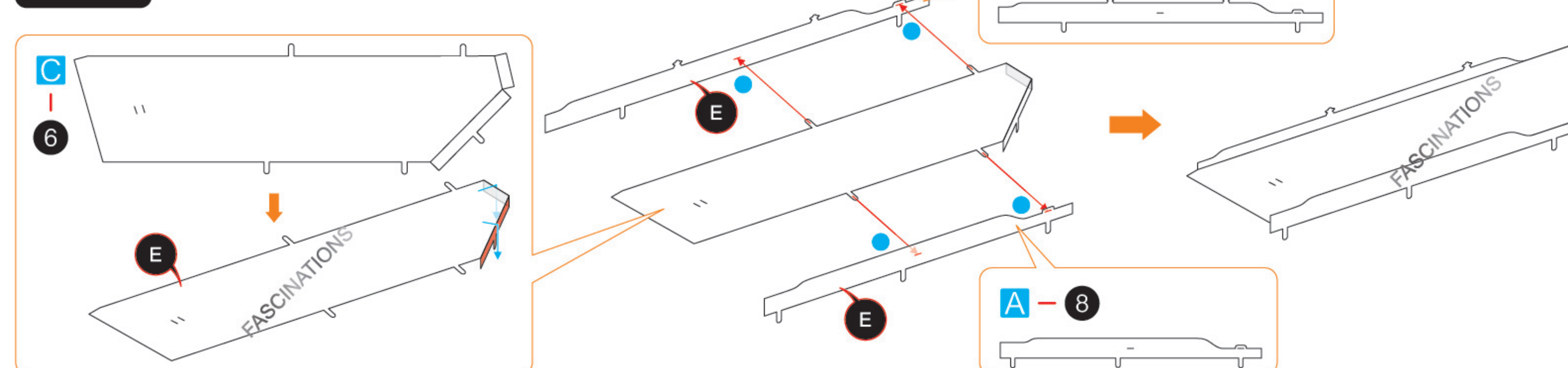
Step 1



Step 2

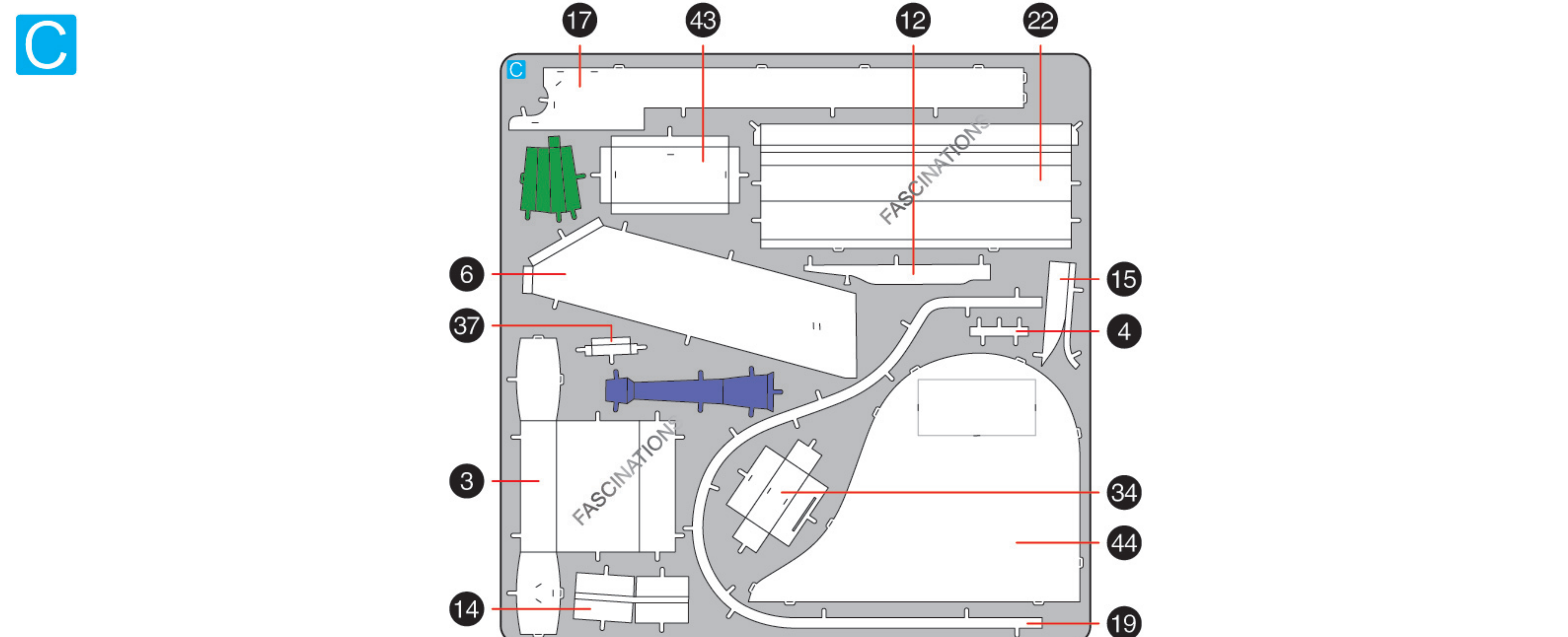
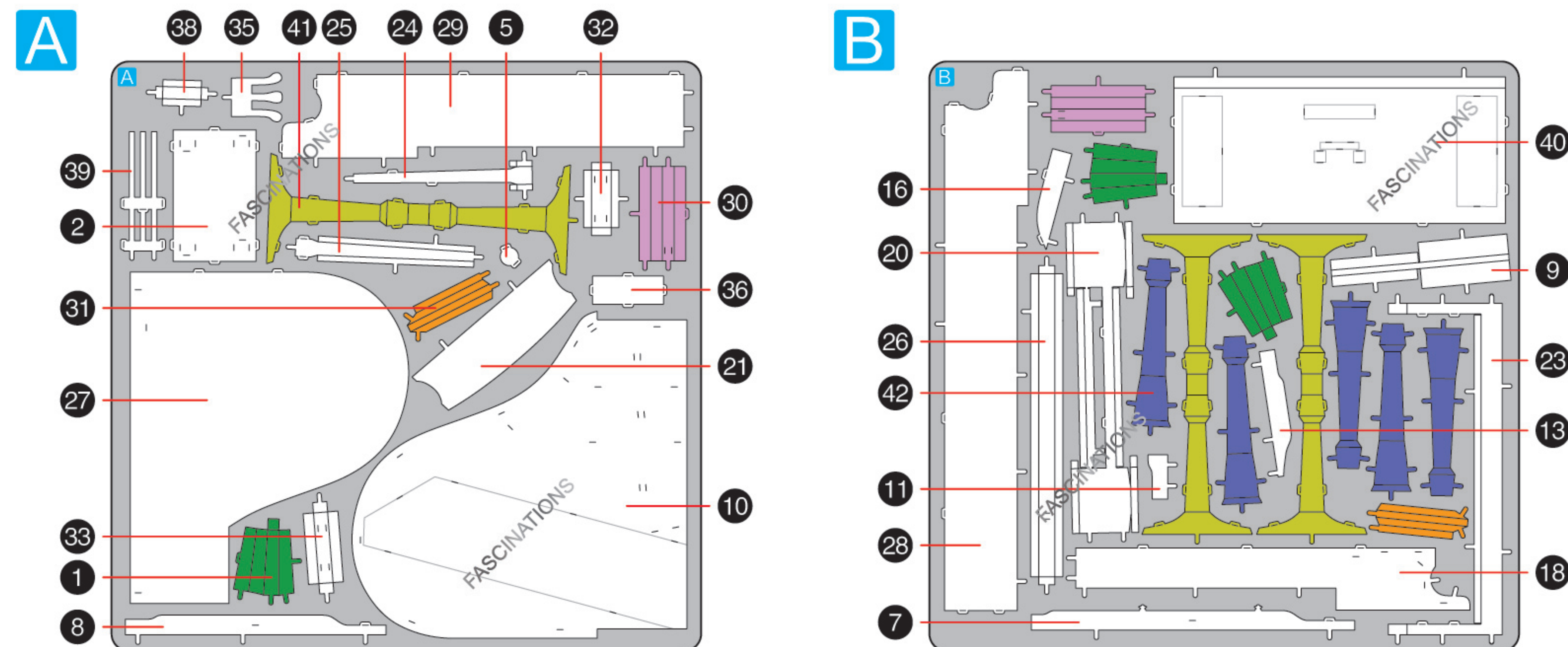


Step 3

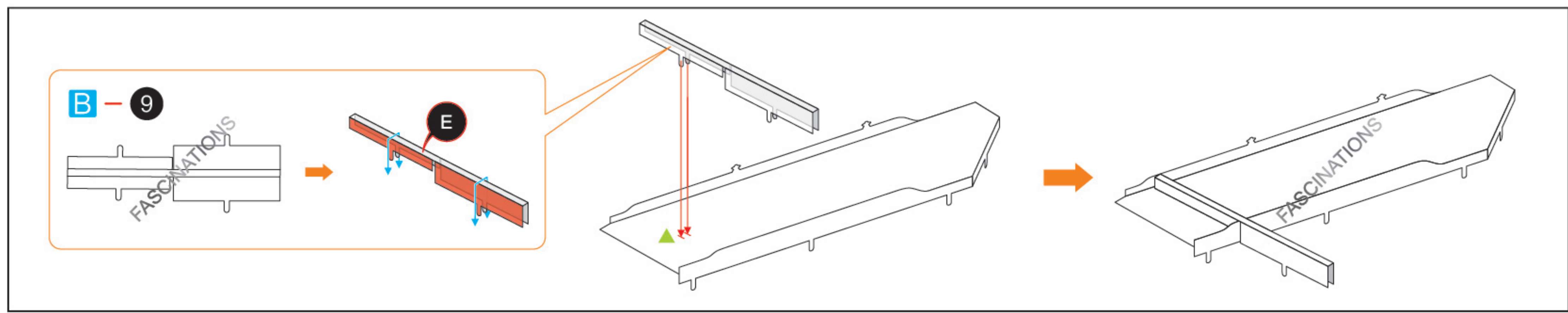


METAL SHEETS

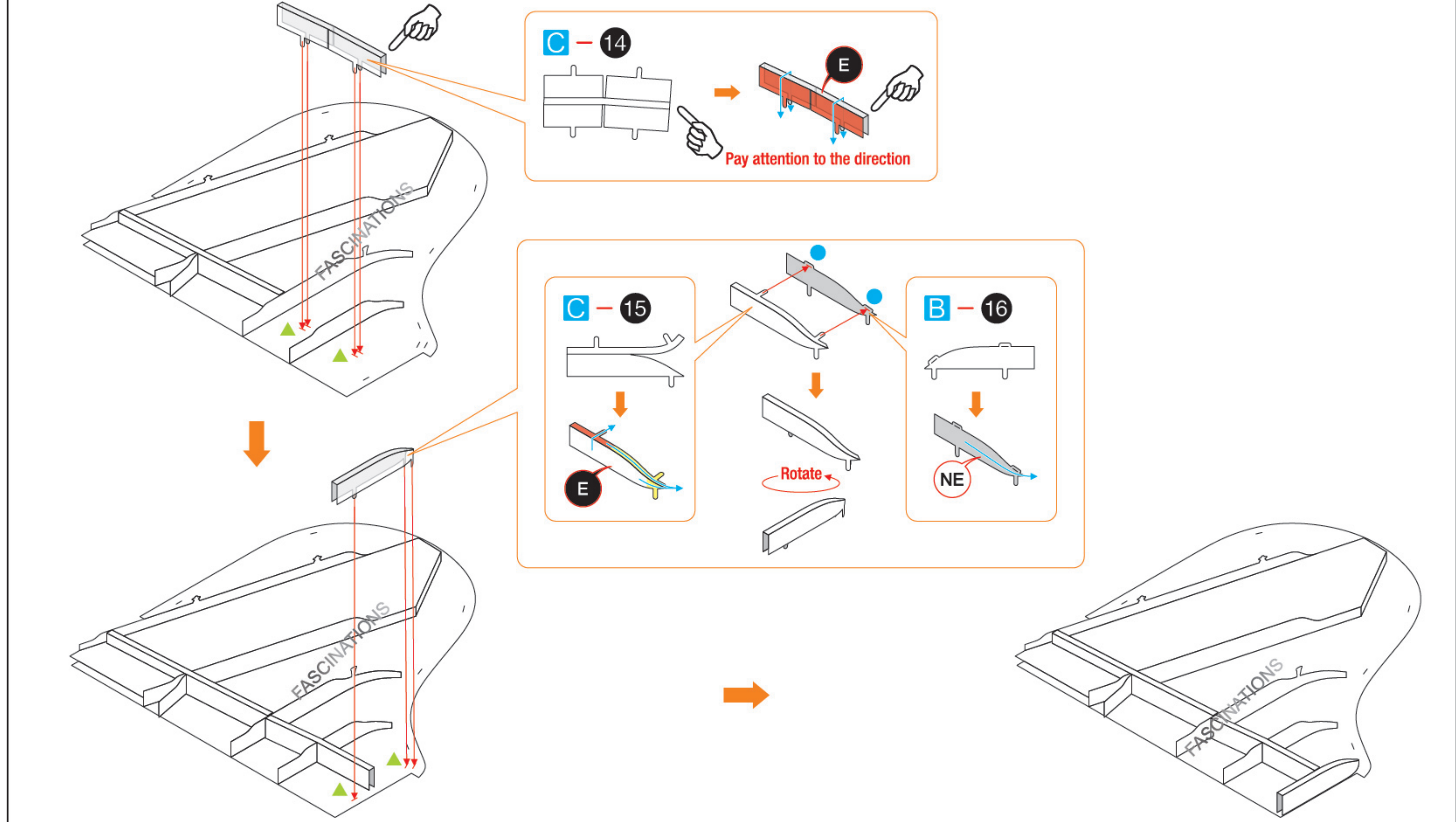
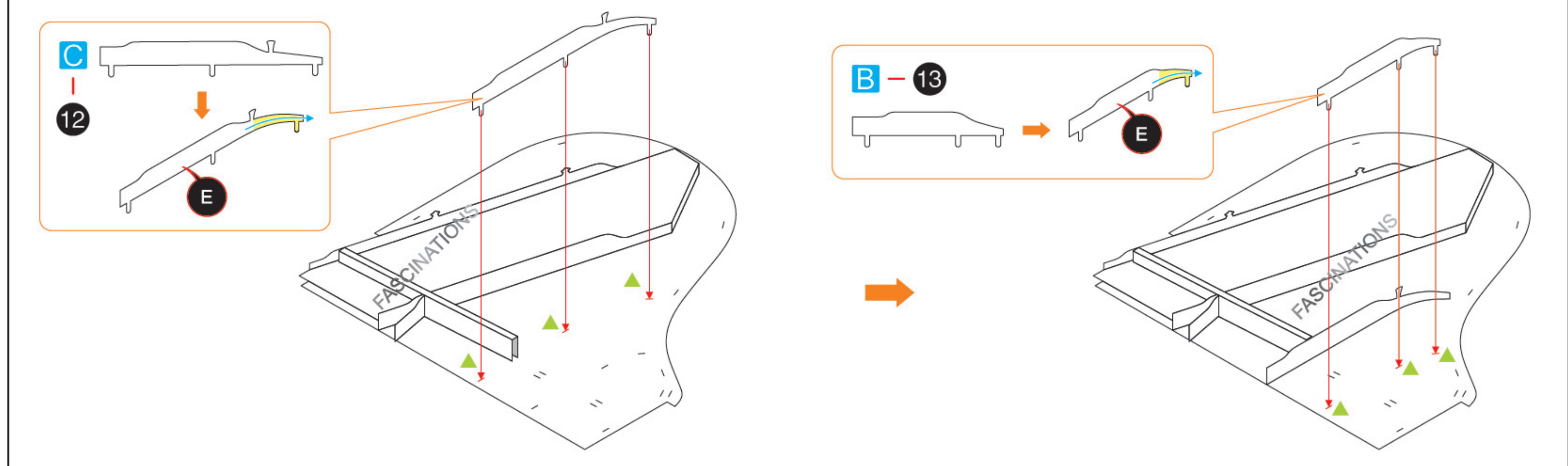
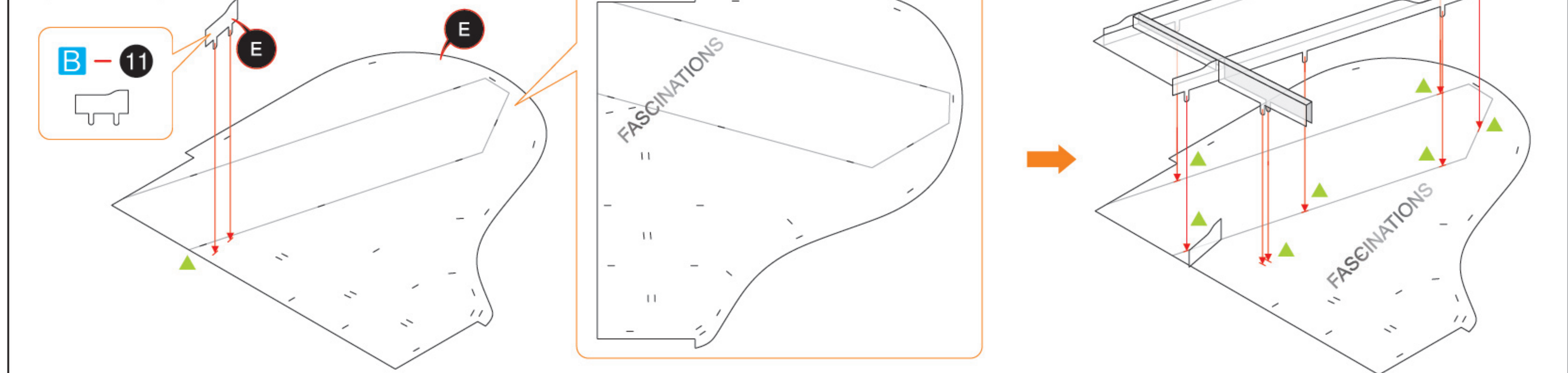
Parts with same color are duplicates



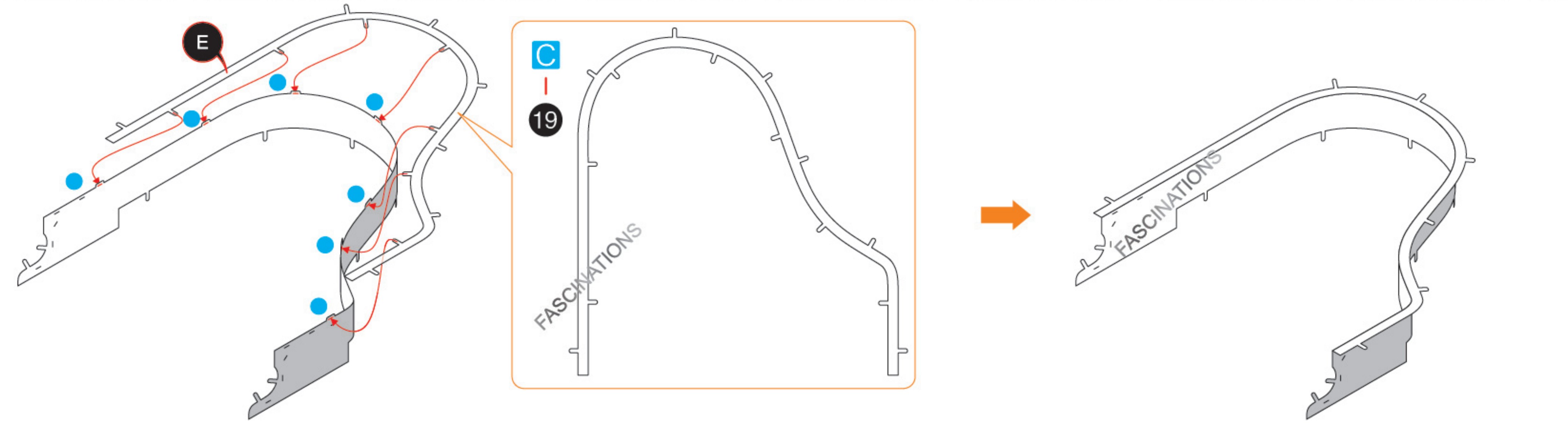
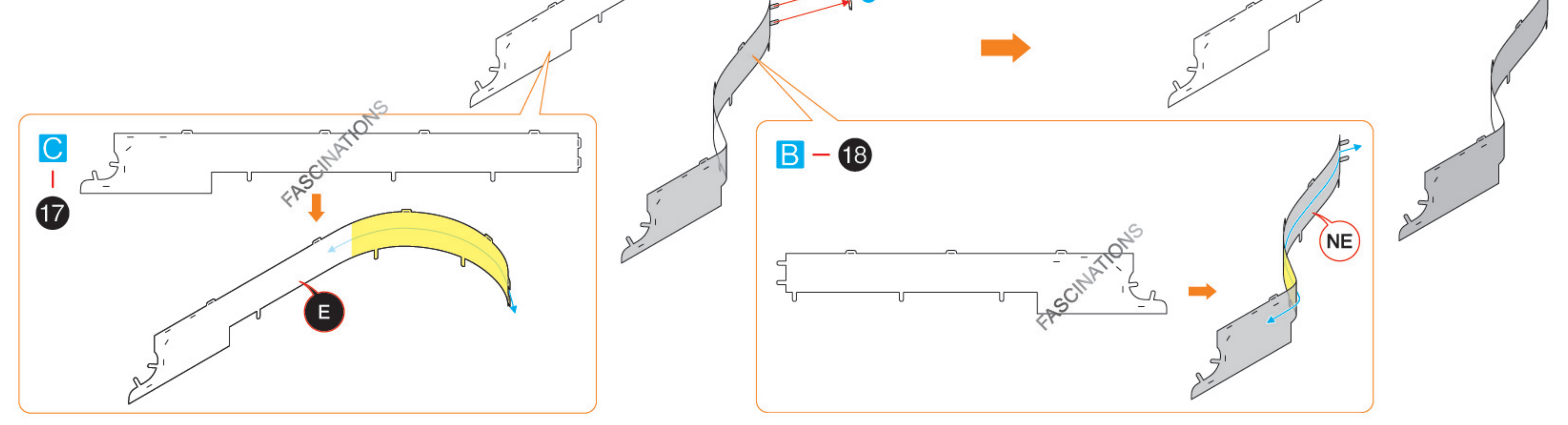
In order to avoid possible injury from sharp edges, please carefully discard the metal sheets after parts have been removed.



Step 4



Step 5



Step 6

