

ETA-2 JEDI STARFIGHTER™ MMS487

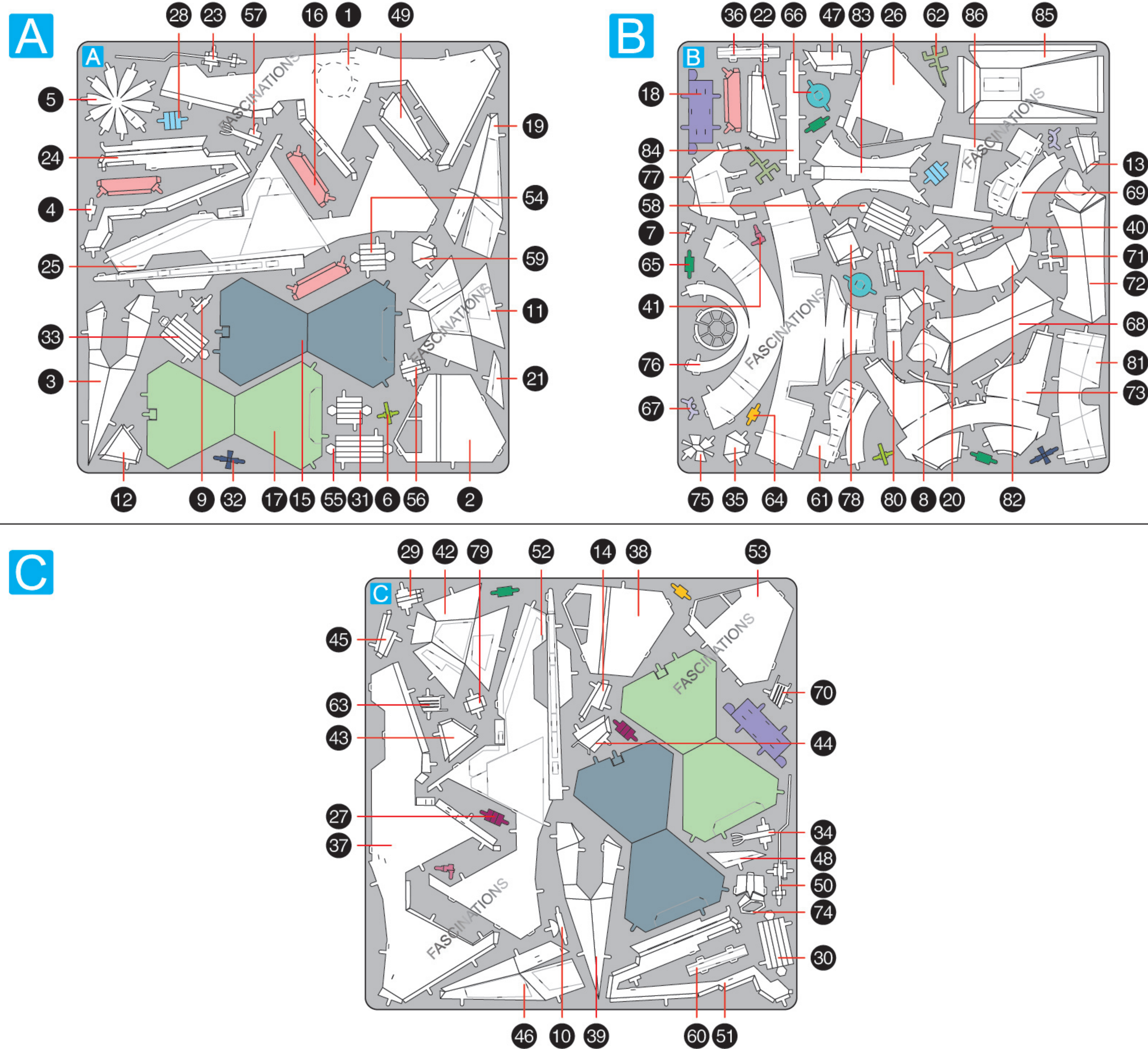
It is highly recommended that you visit
www.metalearth.com/360/MMS487

to see the completed model before assembling your own



METAL SHEETS

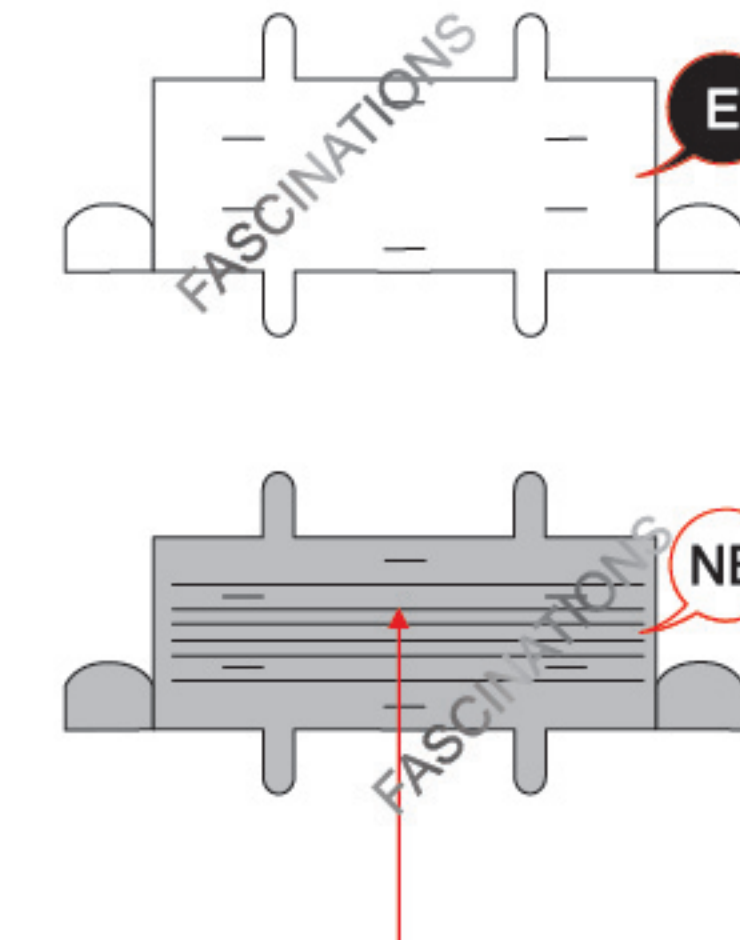
Parts with same color are duplicates



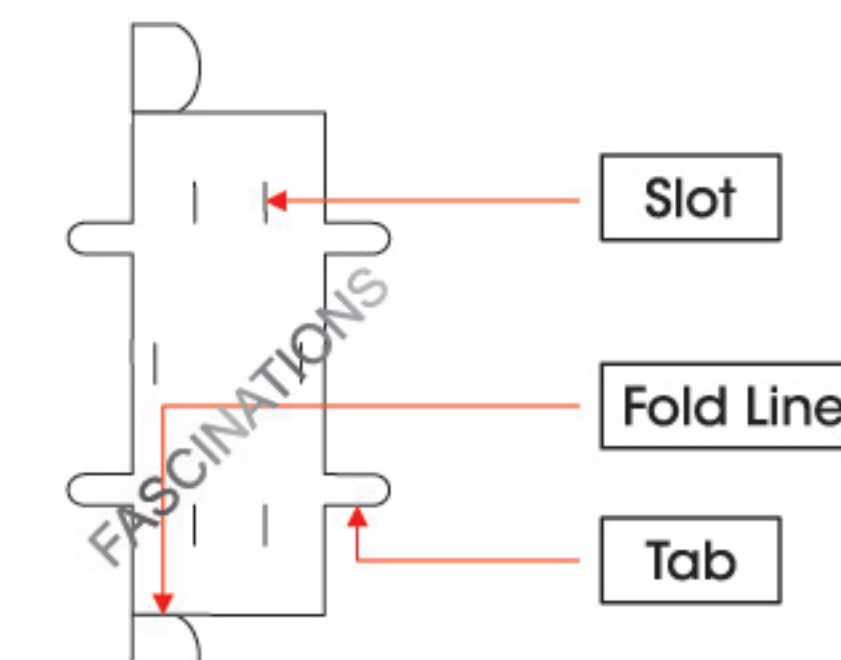
In order to avoid possible injury from sharp edges, please carefully discard the metal sheets after parts have been removed.

TO CREATE THE BEST CONNECTIONS

BC - 18



Consider these engraved stripes as supporting features for the bend



Legends:

- E** Engraved/ Color side
- NE** Non - engraved/ Silver side
- Attention point
- Insert tab and bend 90 degrees
- Insert tab and twist 90 degrees

Recommended tools:

- Wire cutters: helpful for taking parts from the metal sheets.

- Tweezers or needle nose pliers: helpful for folding parts, bending and twisting tabs.

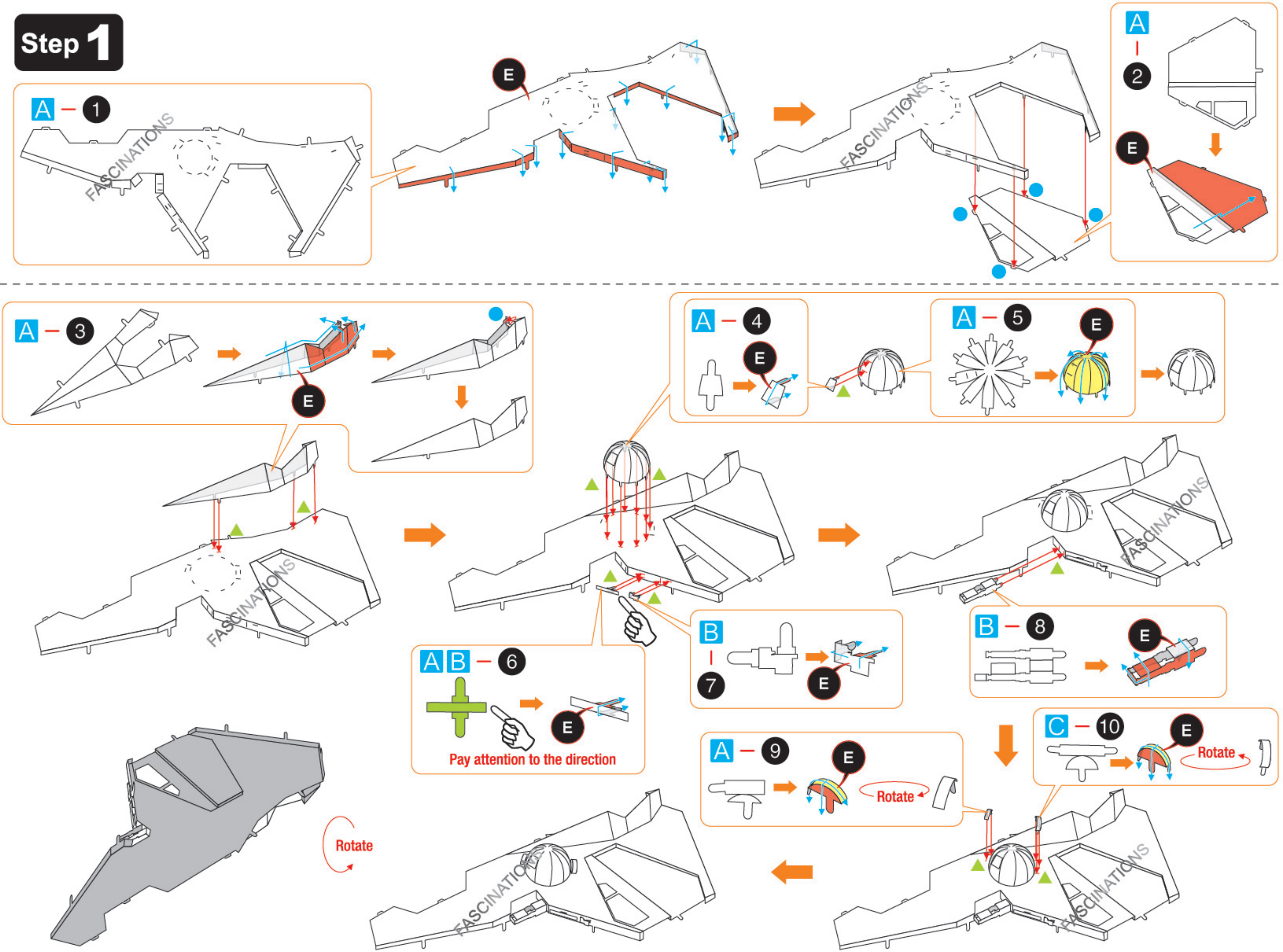
Assembly tip:

If needed, slightly twist tabs to hold parts together then untwist and bend them down for a nice finish.

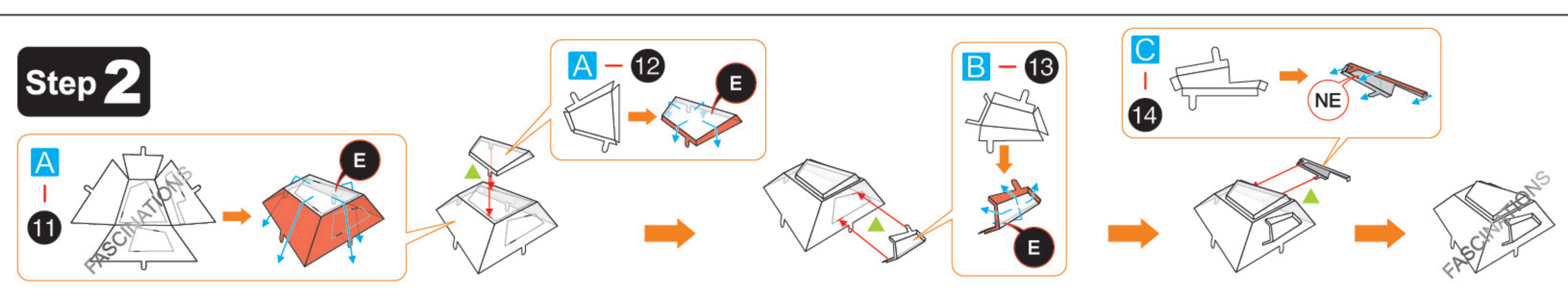
- Yellow areas should be curled
- Red areas should be folded

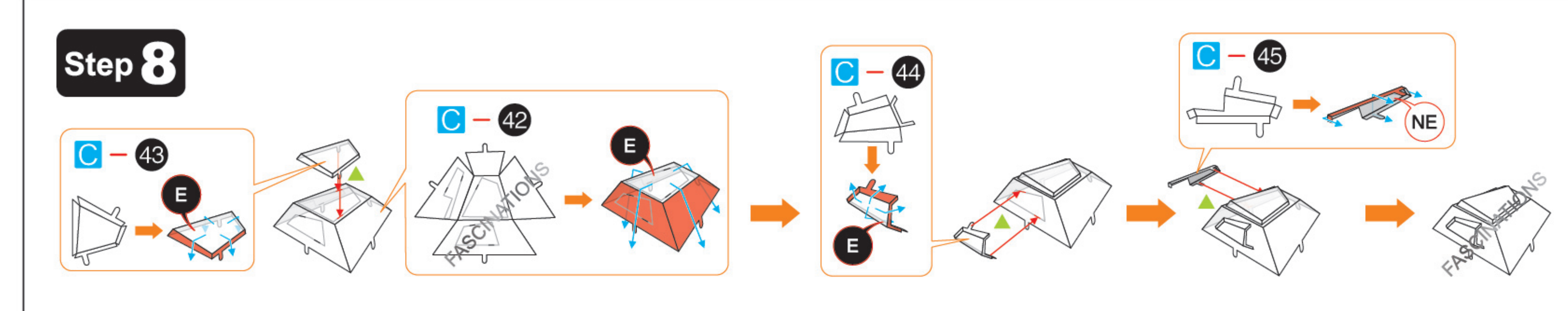
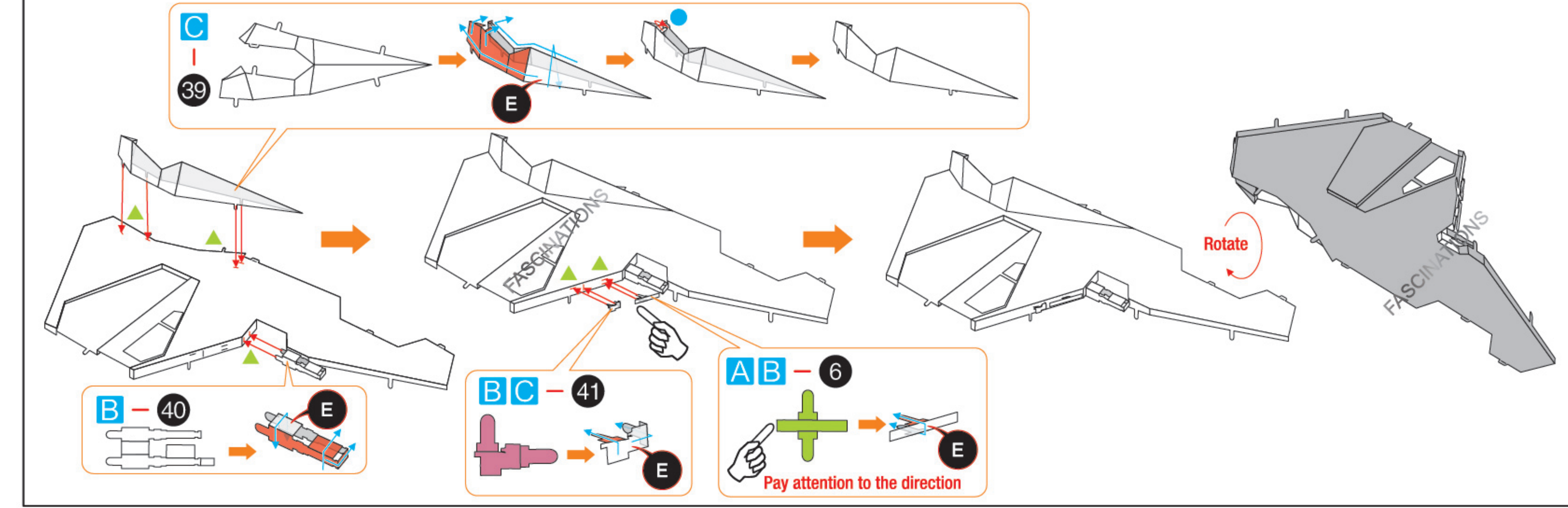
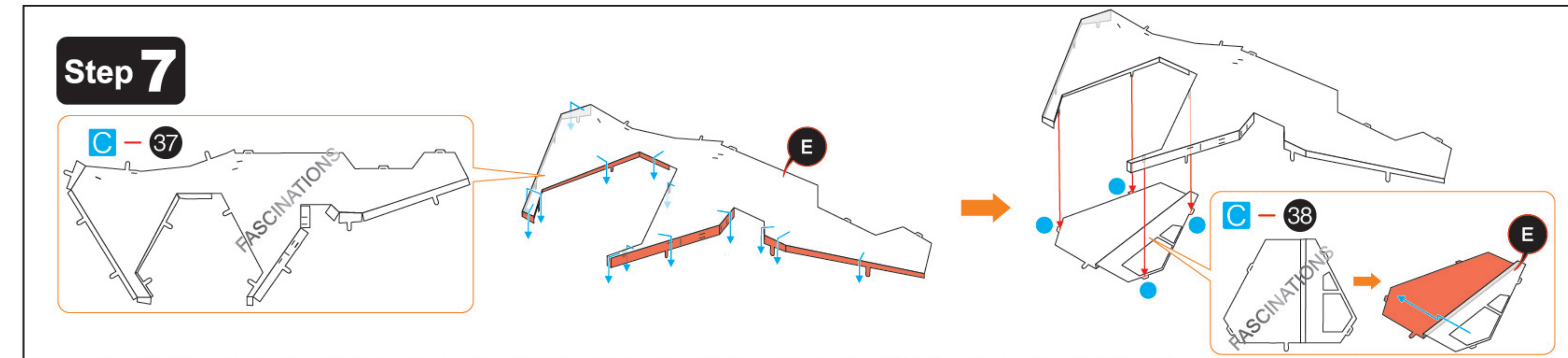
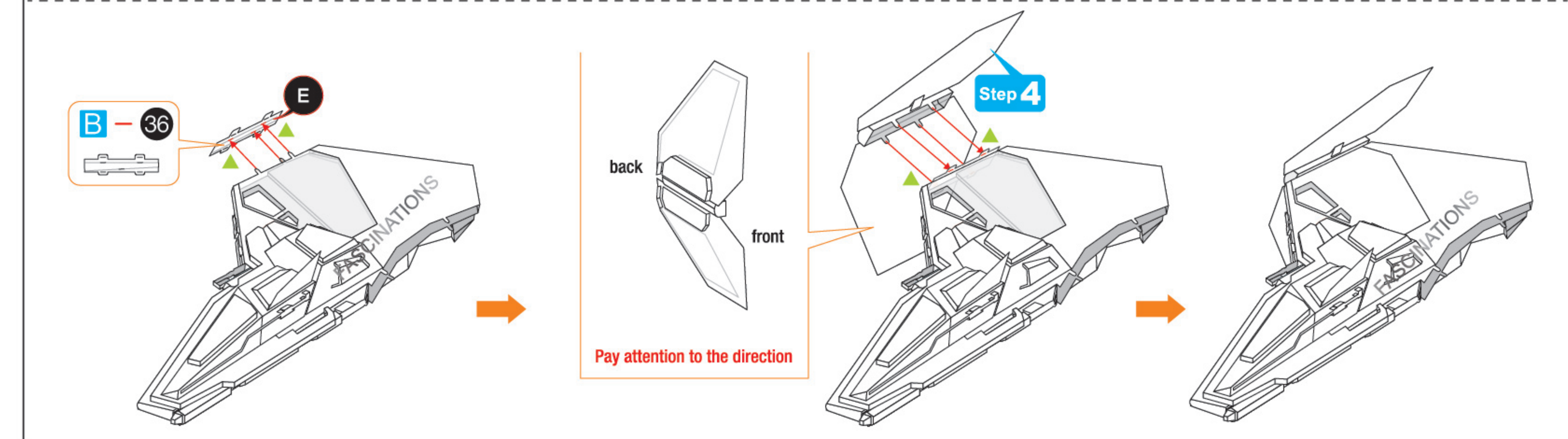
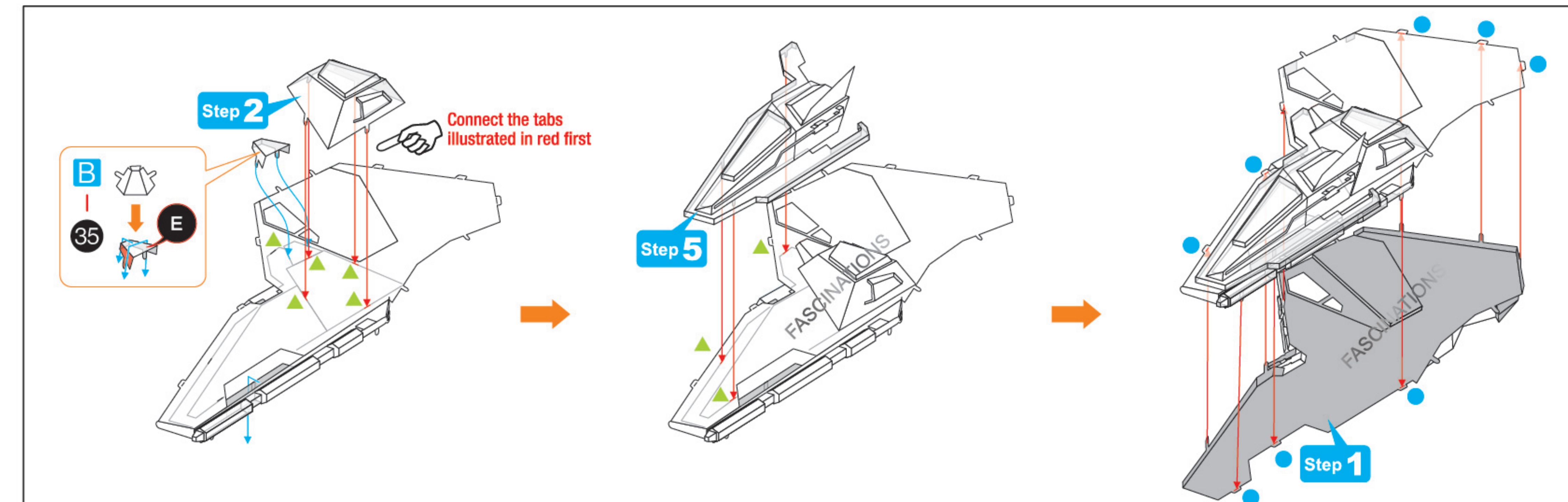
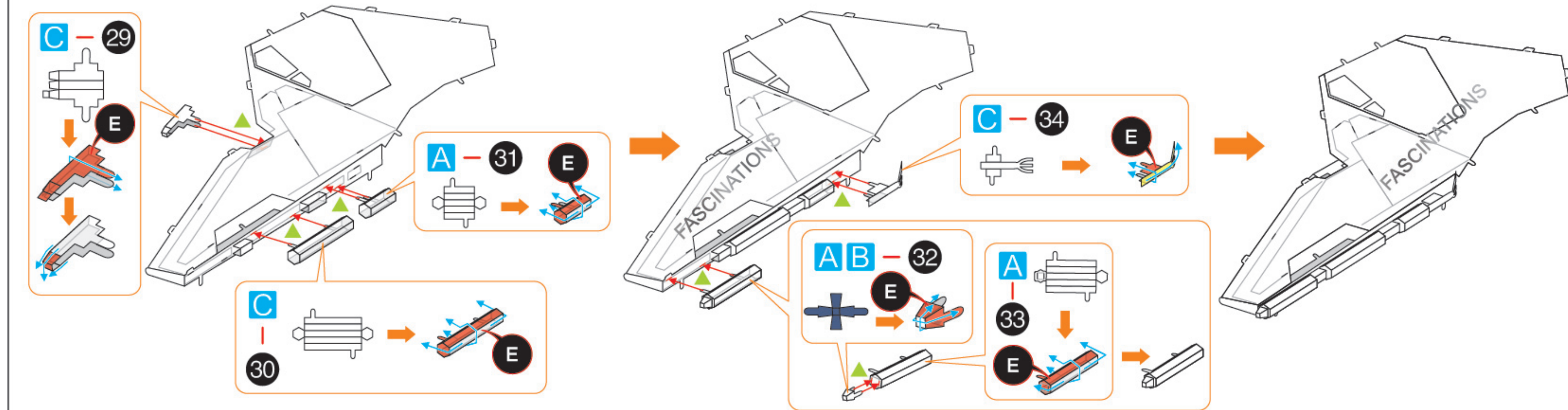
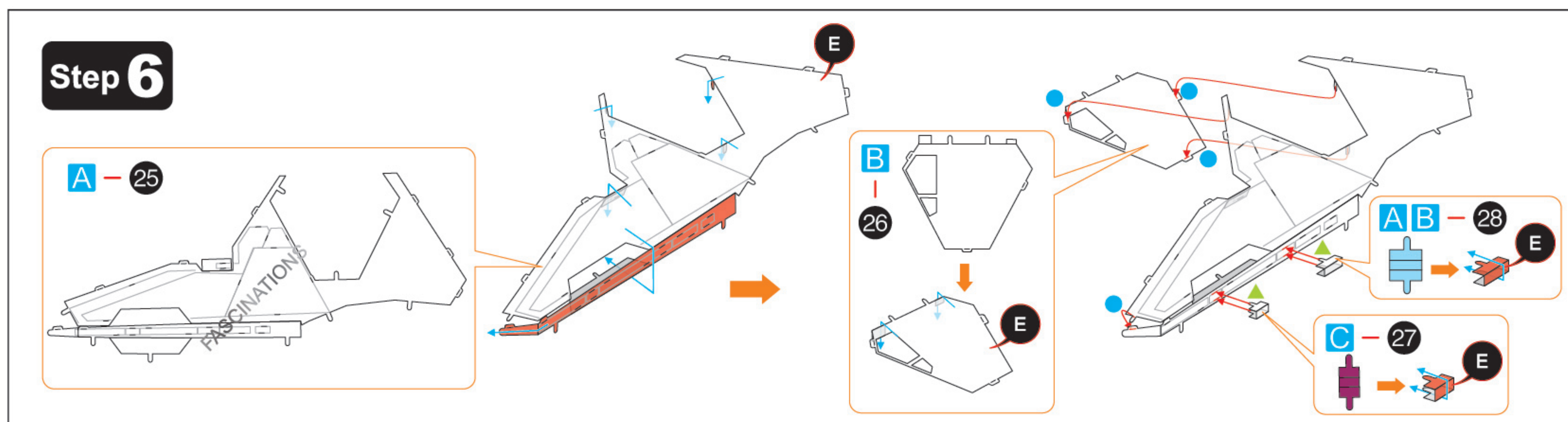
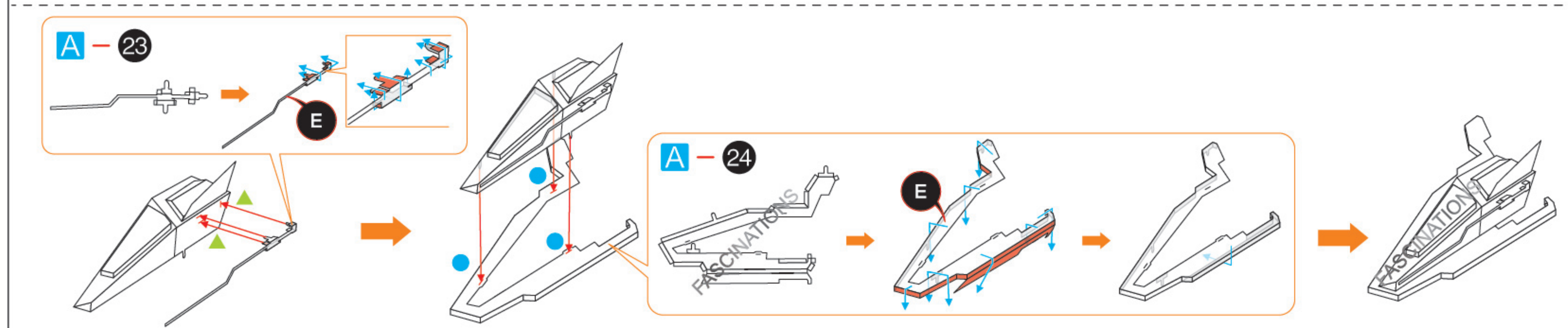
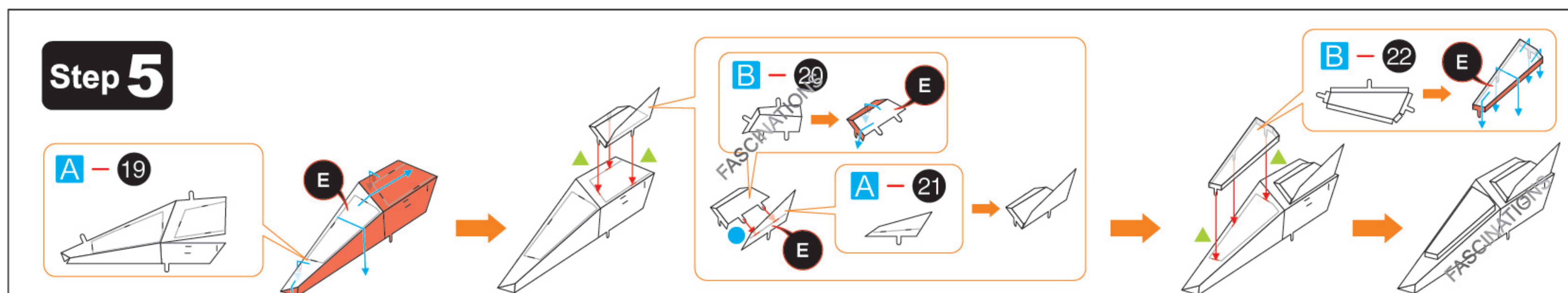
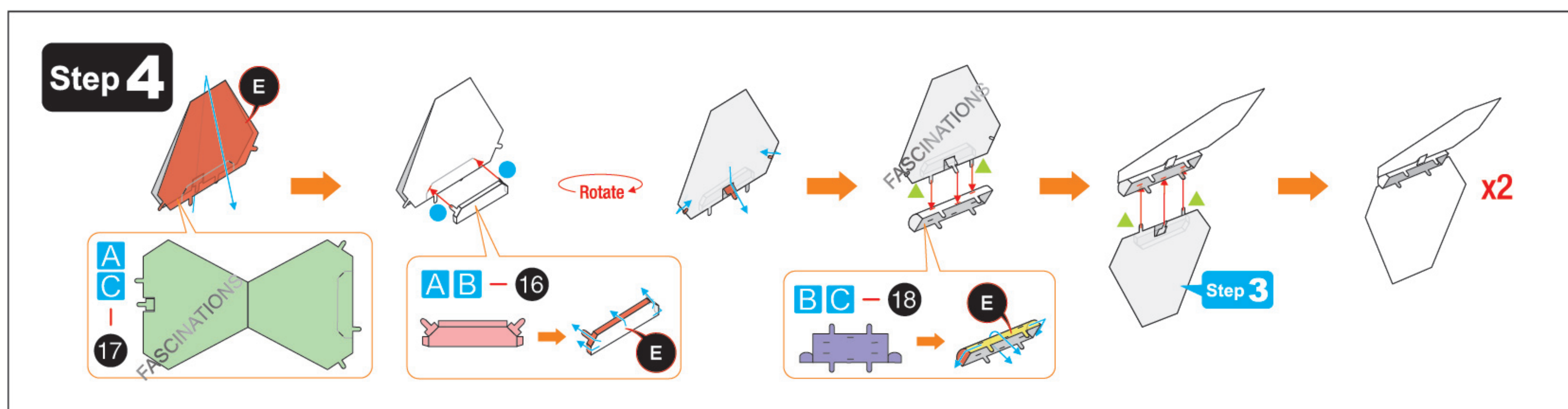
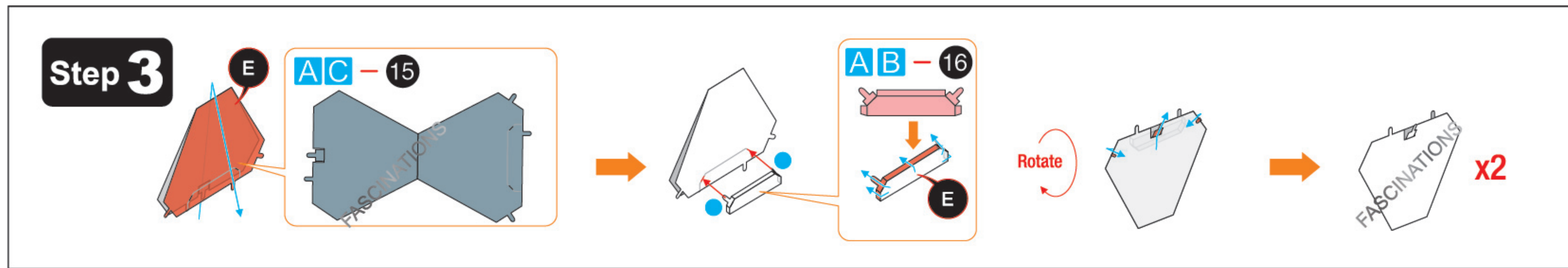
ASSEMBLY FLOW CHART

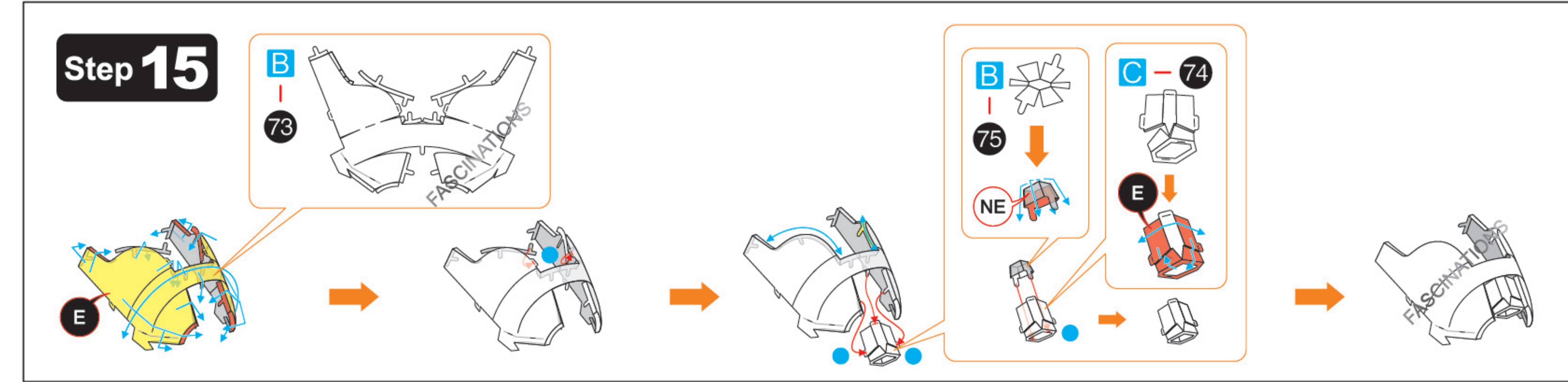
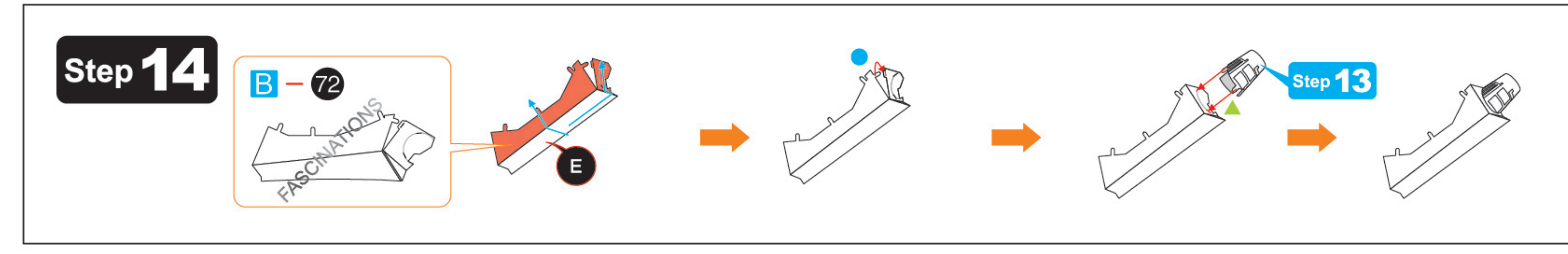
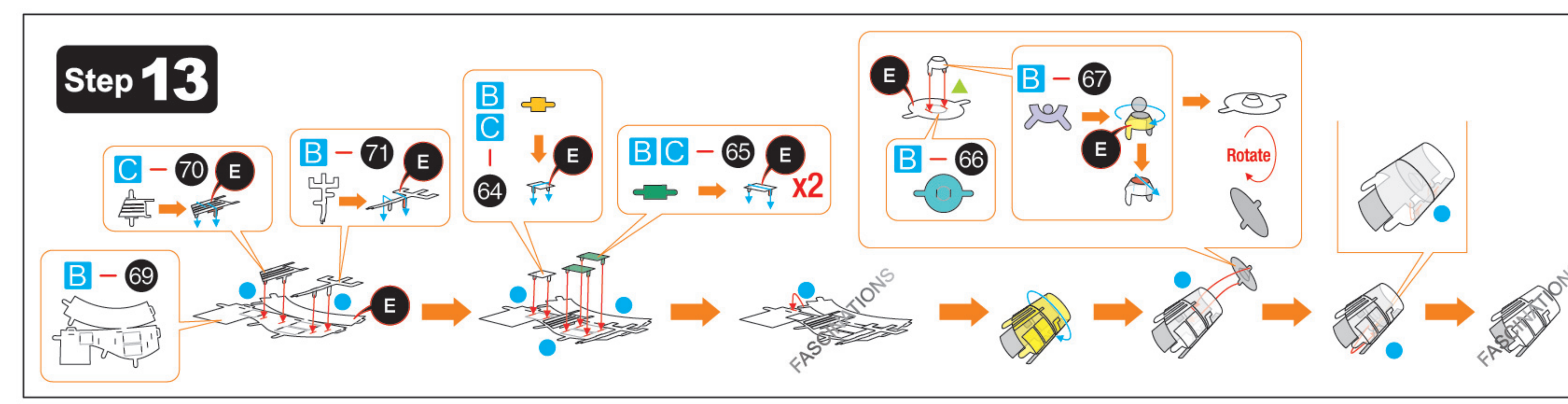
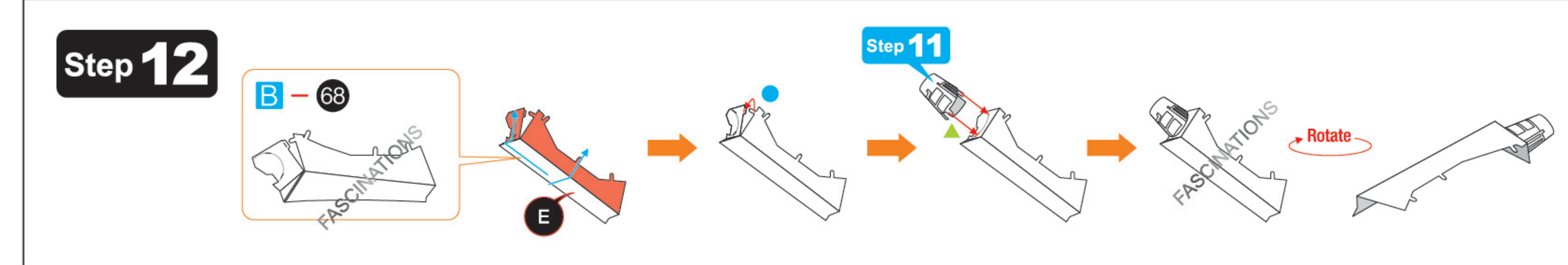
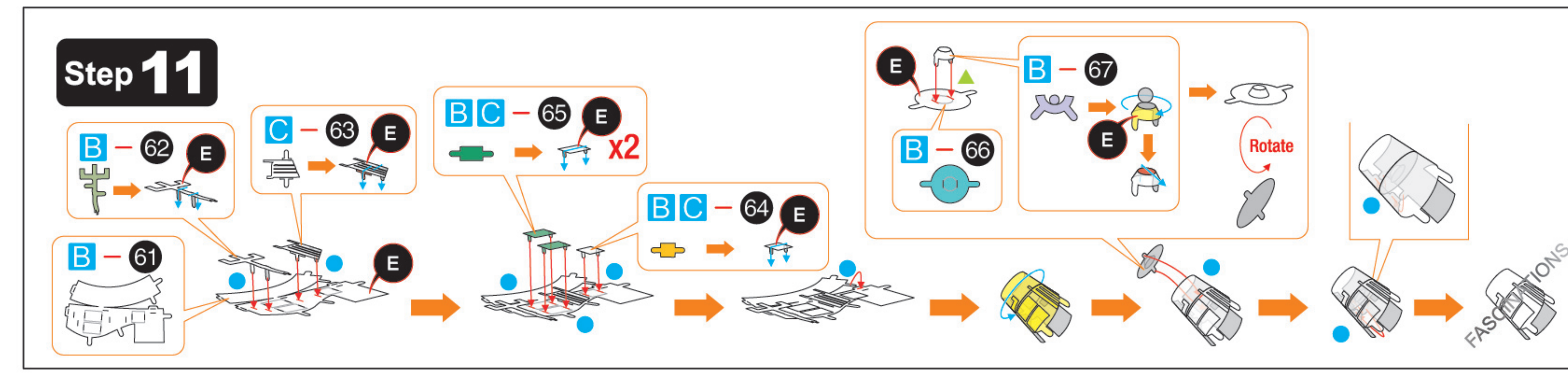
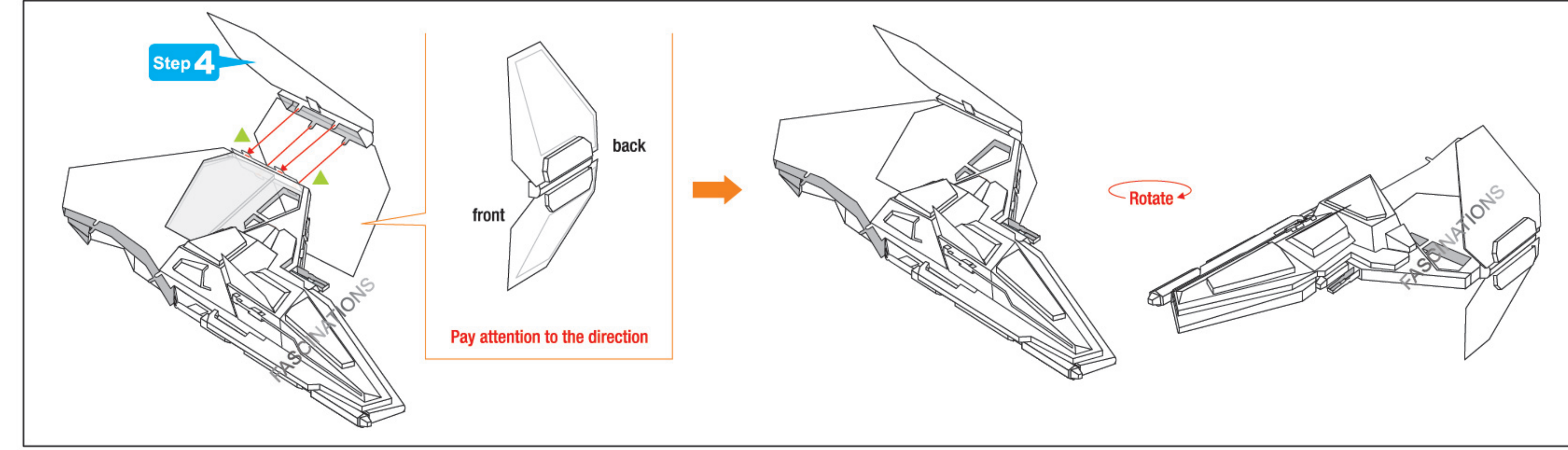
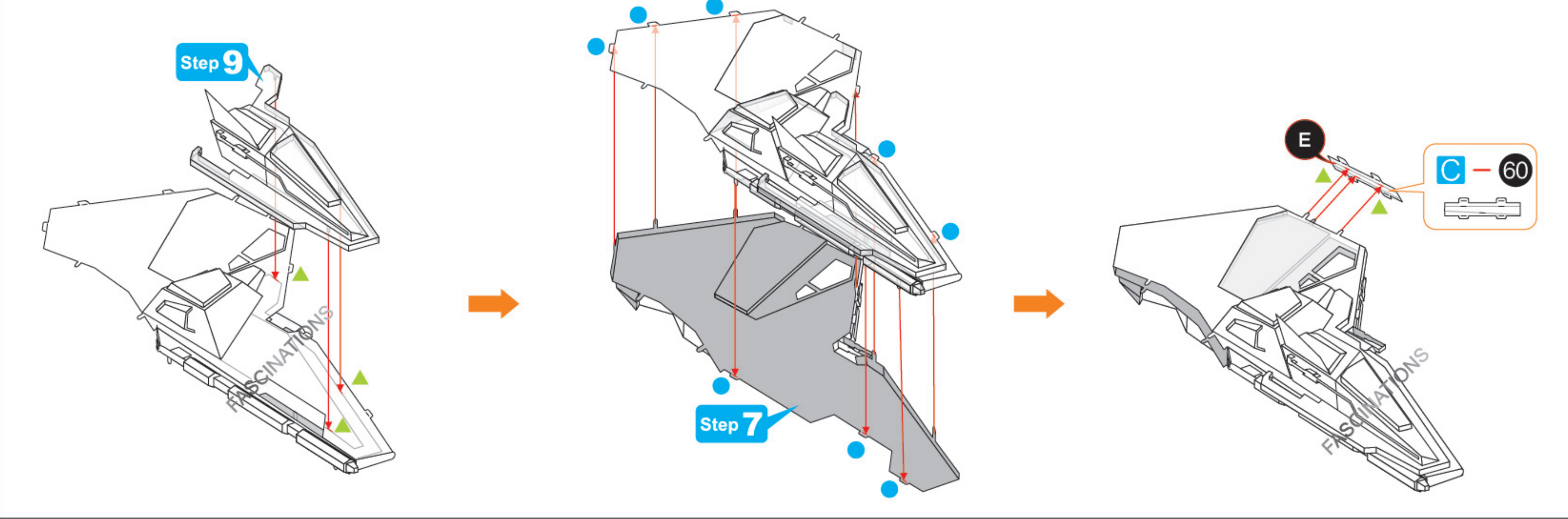
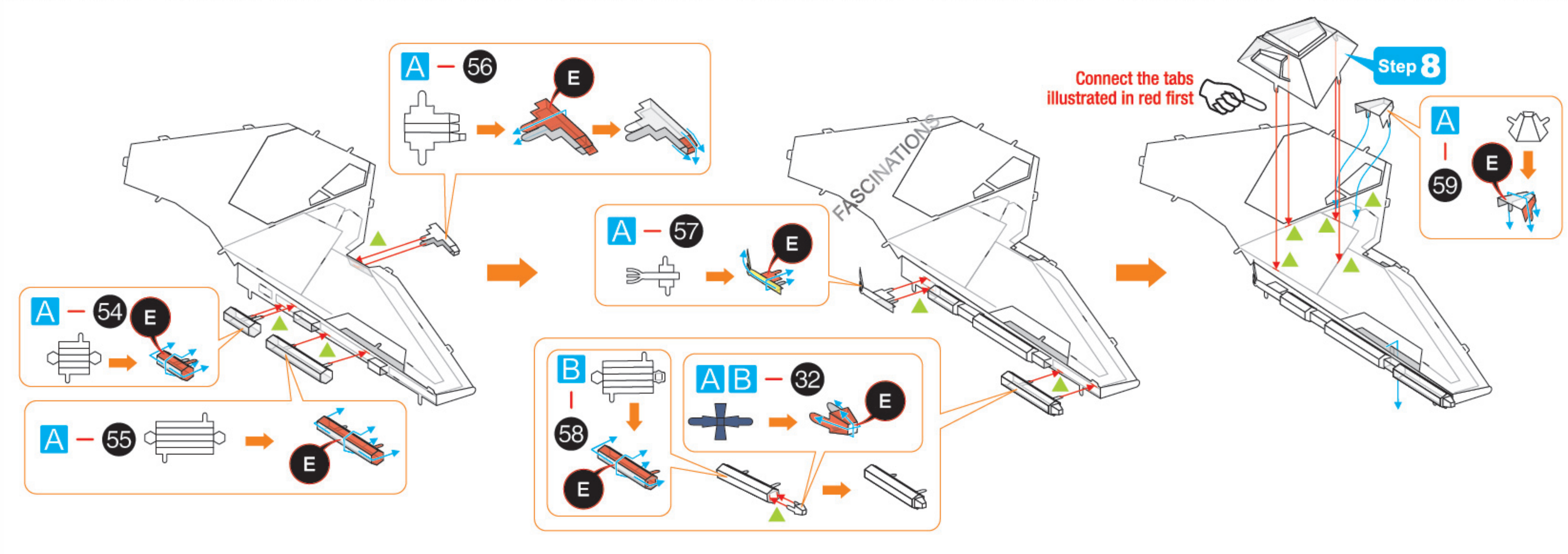
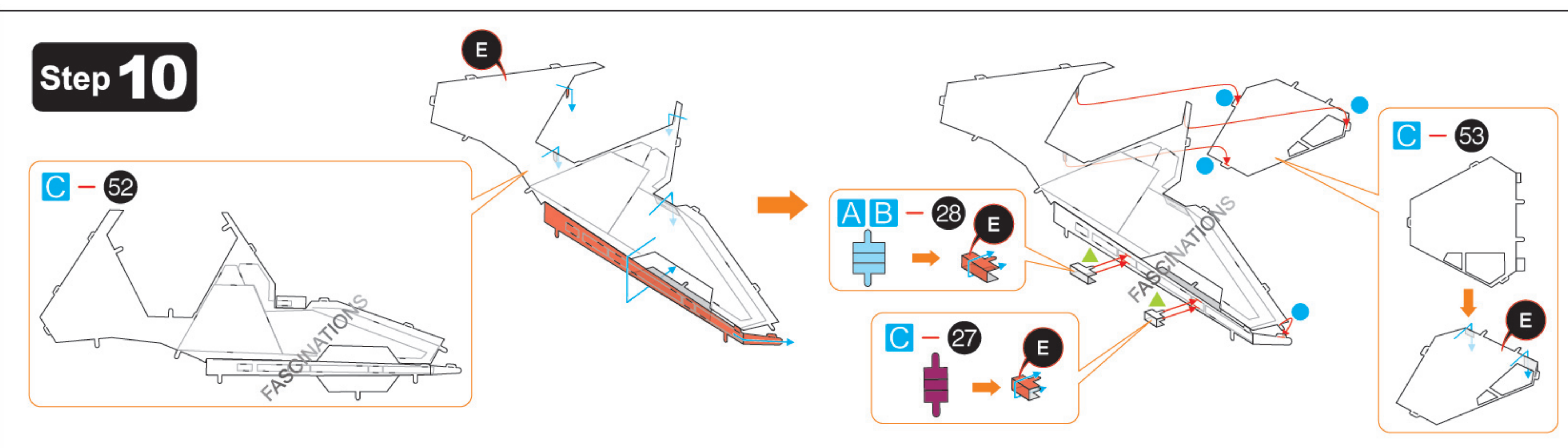
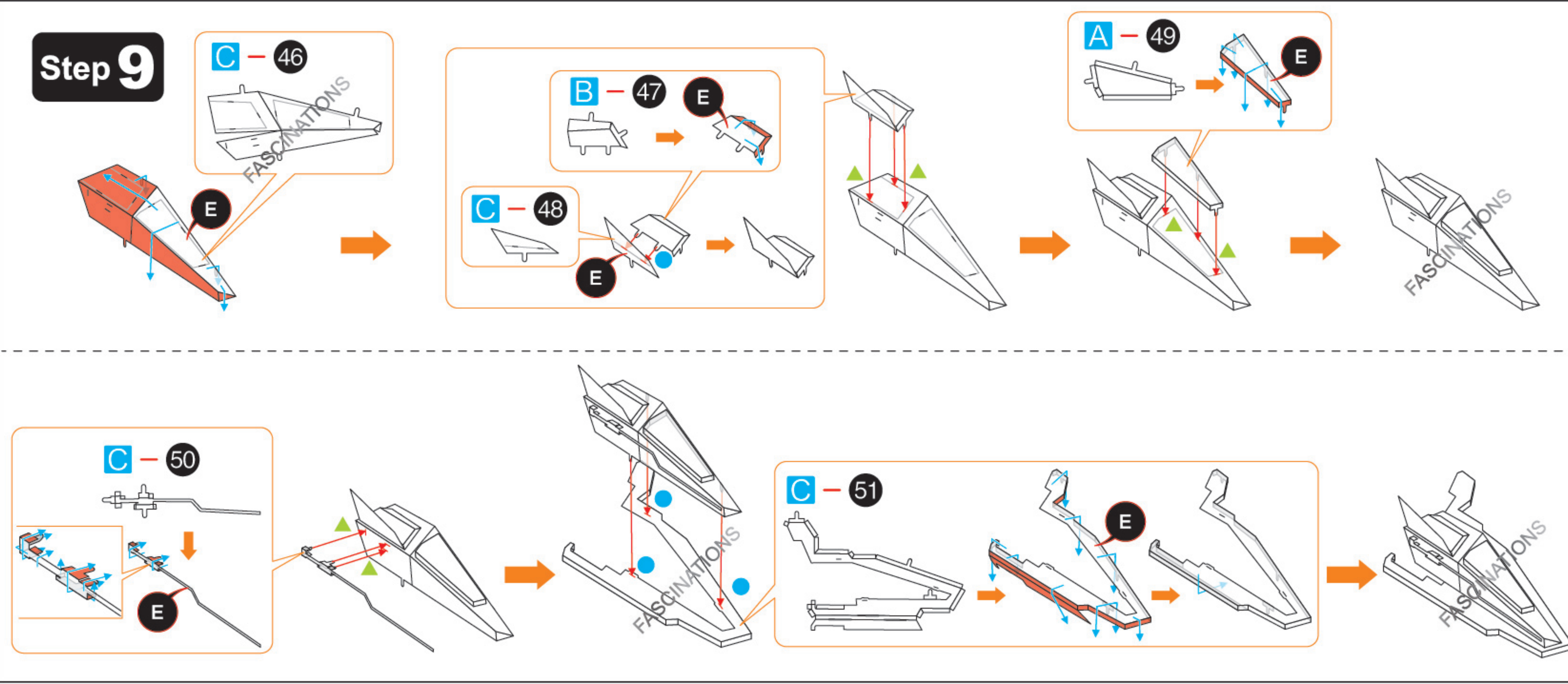
Step 1



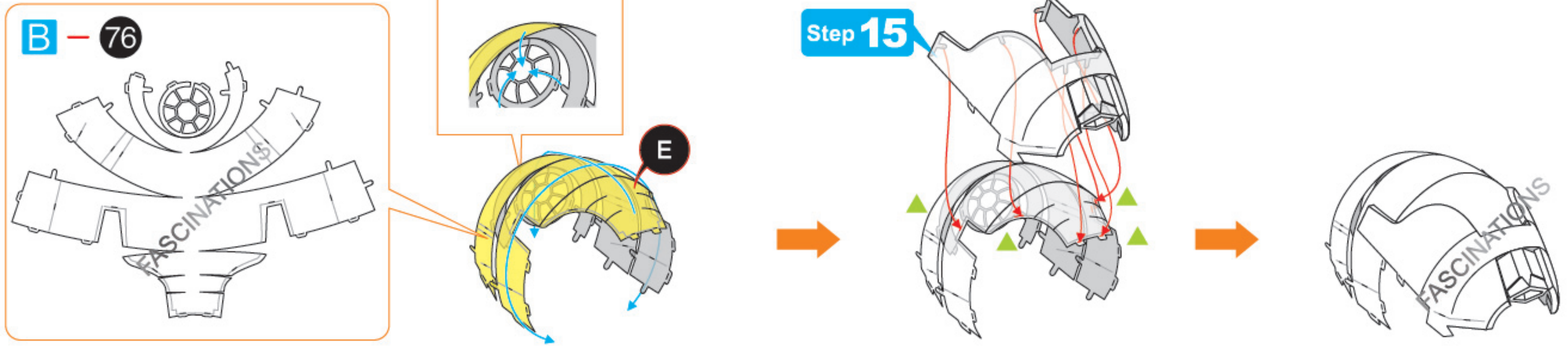
Step 2



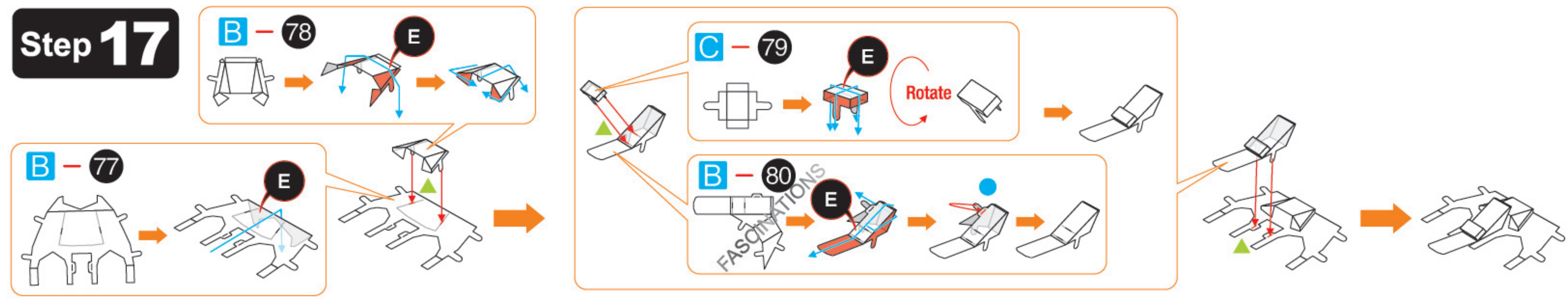




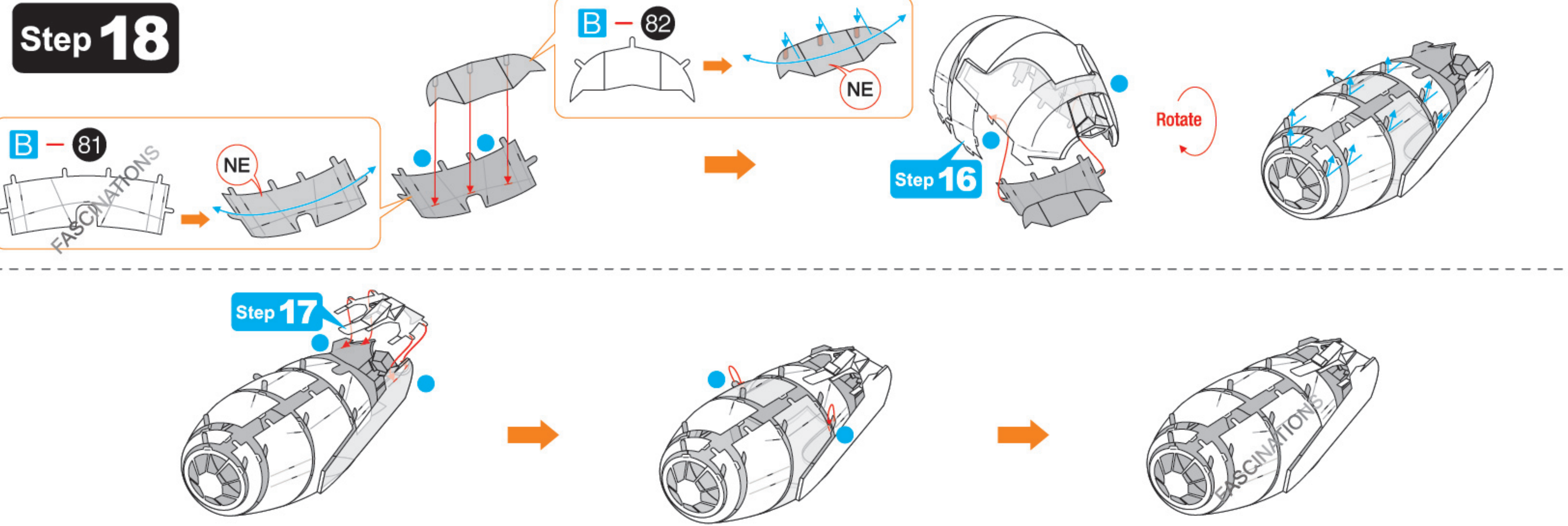
Step 16



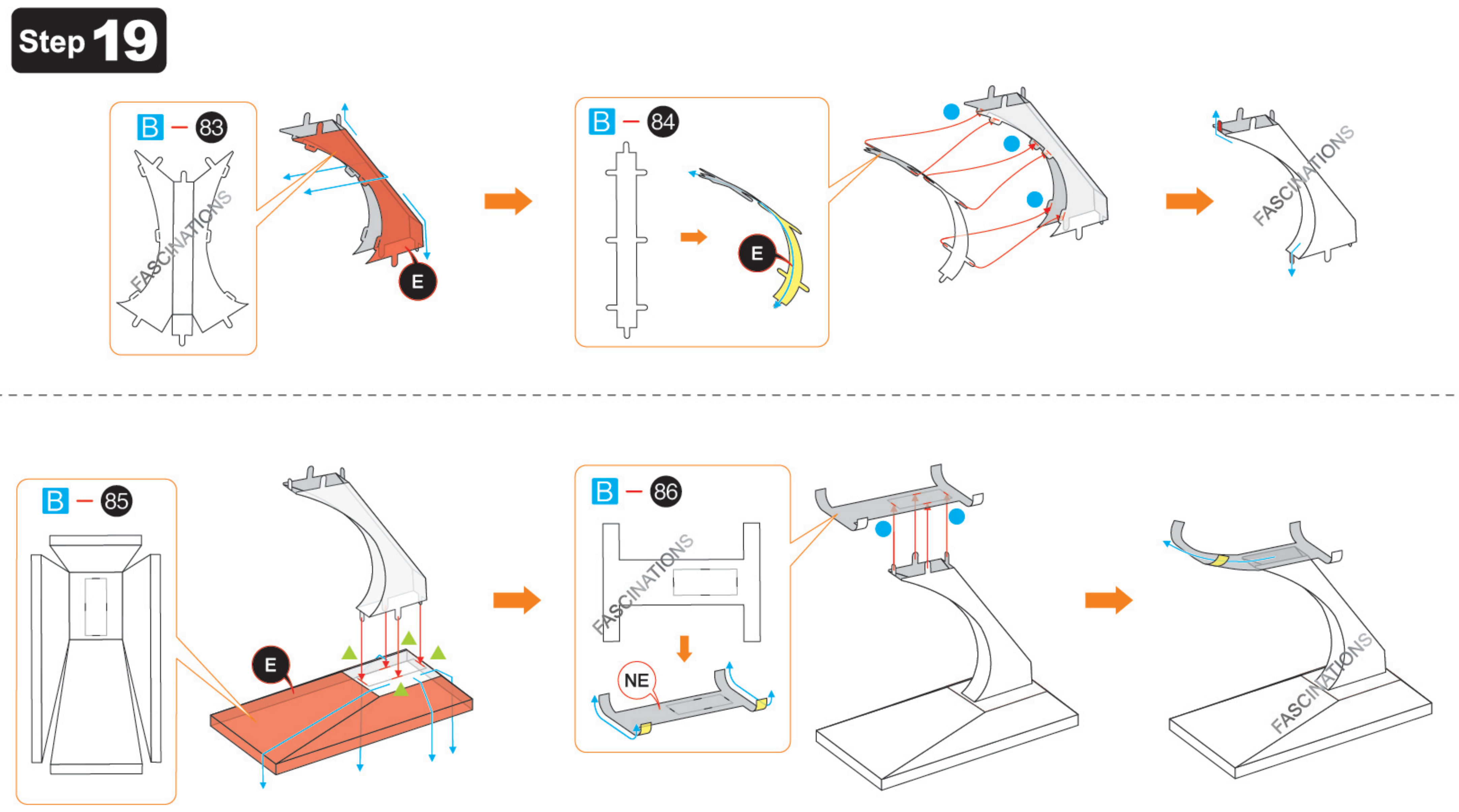
Step 17



Step 18



Step 19



Step 20

