

OFFICIAL LICENSED PRODUCT

1969 PONTIAC GTO JUDGE ME1027

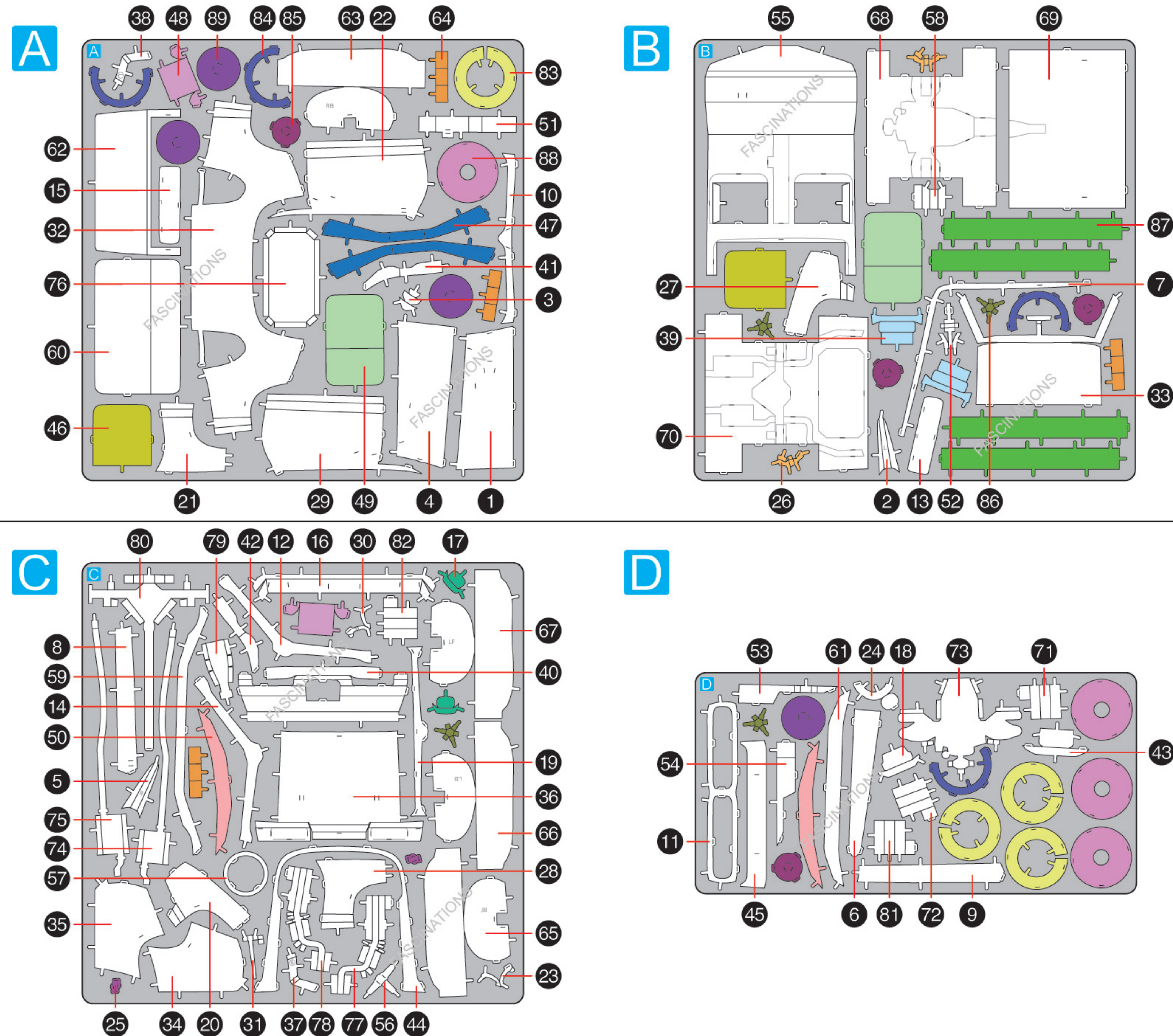


360° view

It is highly recommended that you visit www.metalearth.com/360/ME1027 to see the completed model before assembling your own

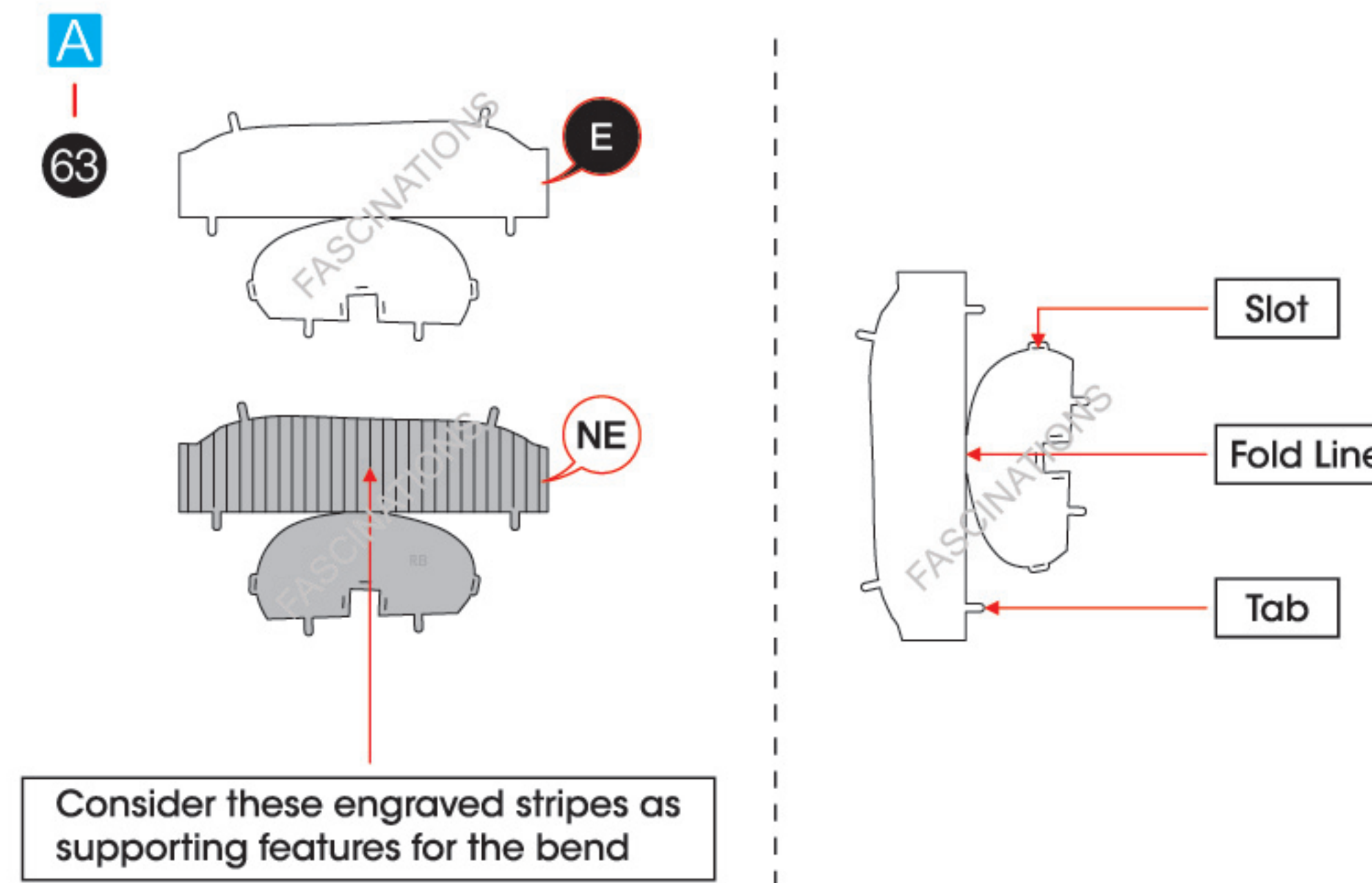
METAL SHEETS

Parts with same color are duplicates



! In order to avoid possible injury from sharp edges, please carefully discard the metal sheets after parts have been removed.

TO CREATE THE BEST CONNECTIONS



Legends:

- E** Engraved / Color side
- NE** Non - engraved / Silver side
- Attention point
- Insert tab and bend 90 degrees
- Insert tab and twist 90 degrees

Assembly tip:

If needed, slightly twist tabs to hold parts together then untwist and bend them down for a nice finish.

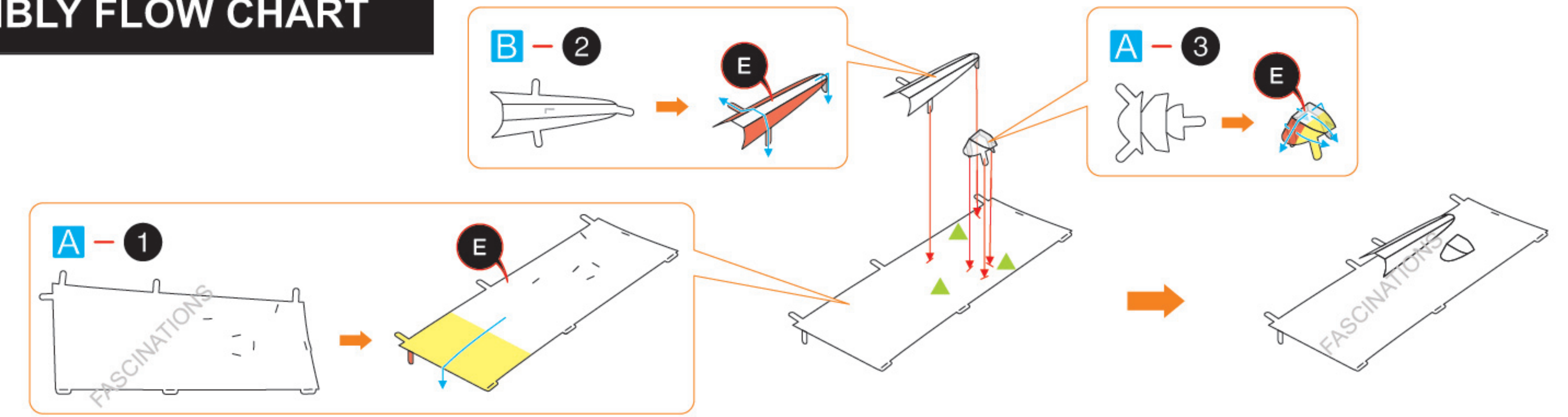
- Yellow areas should be curled
- Red areas should be folded

Recommended tools:

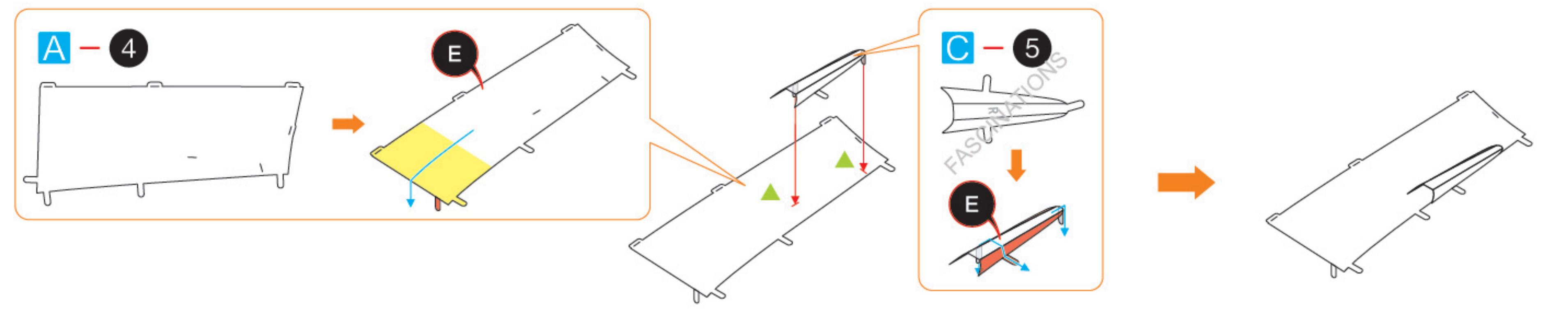
- Wire cutters: helpful for taking parts from the metal sheets.
- Tweezers or needle nose pliers: helpful for folding parts, bending and twisting tabs.

ASSEMBLY FLOW CHART

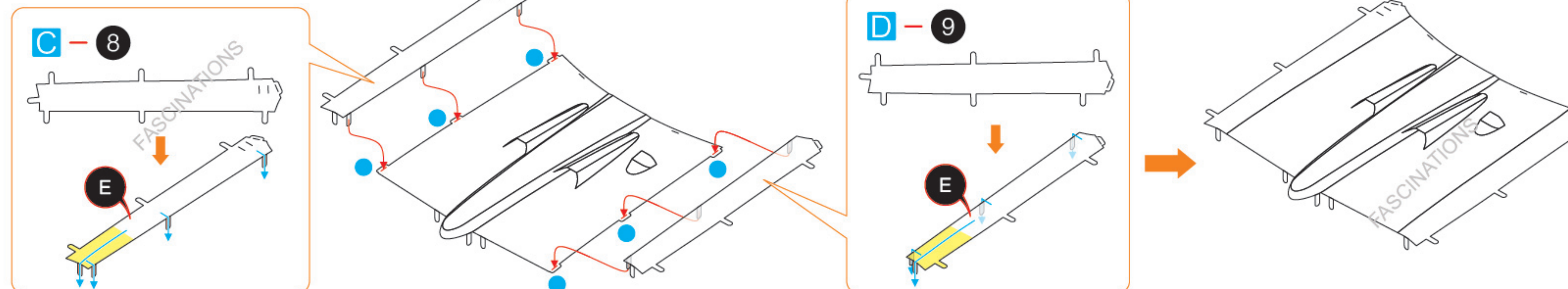
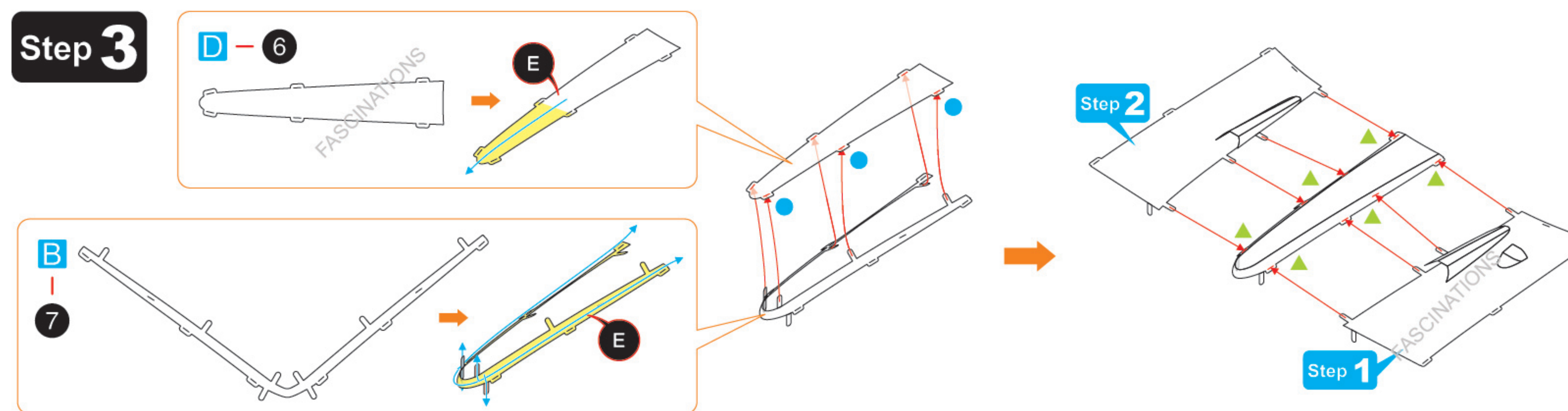
Step 1

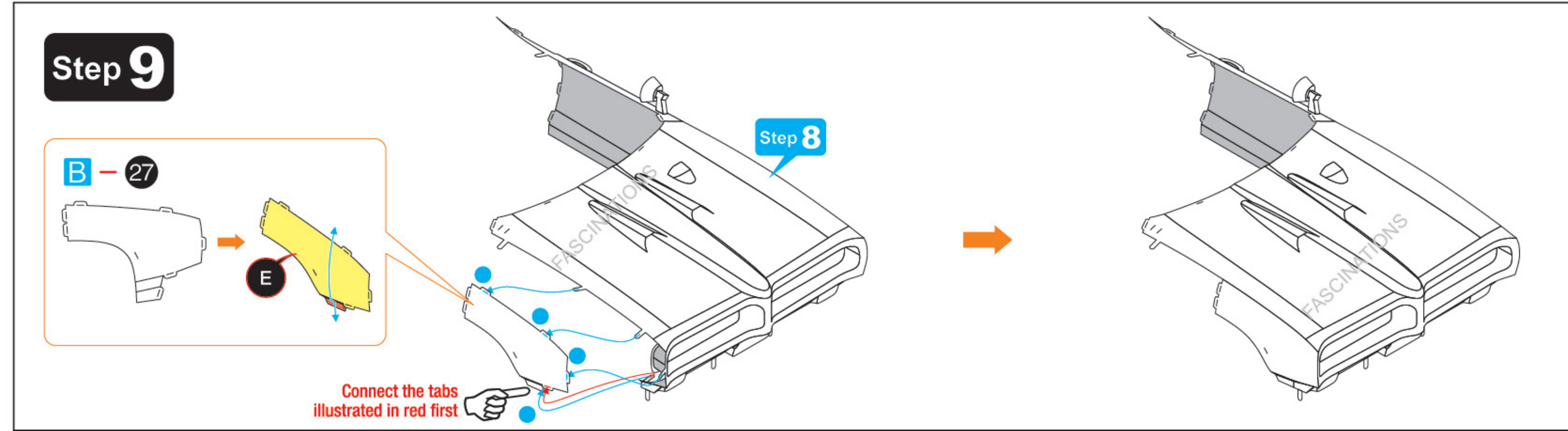
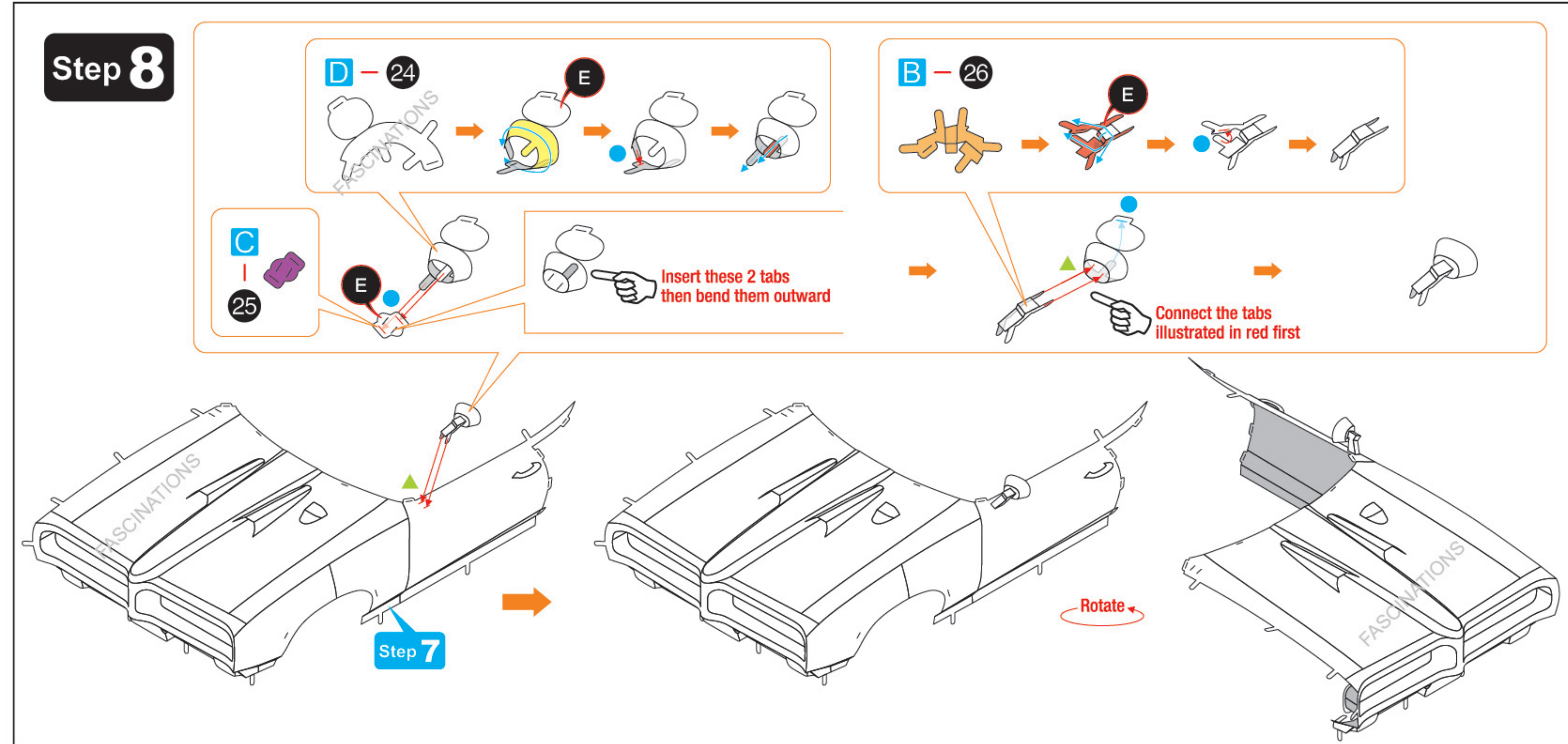
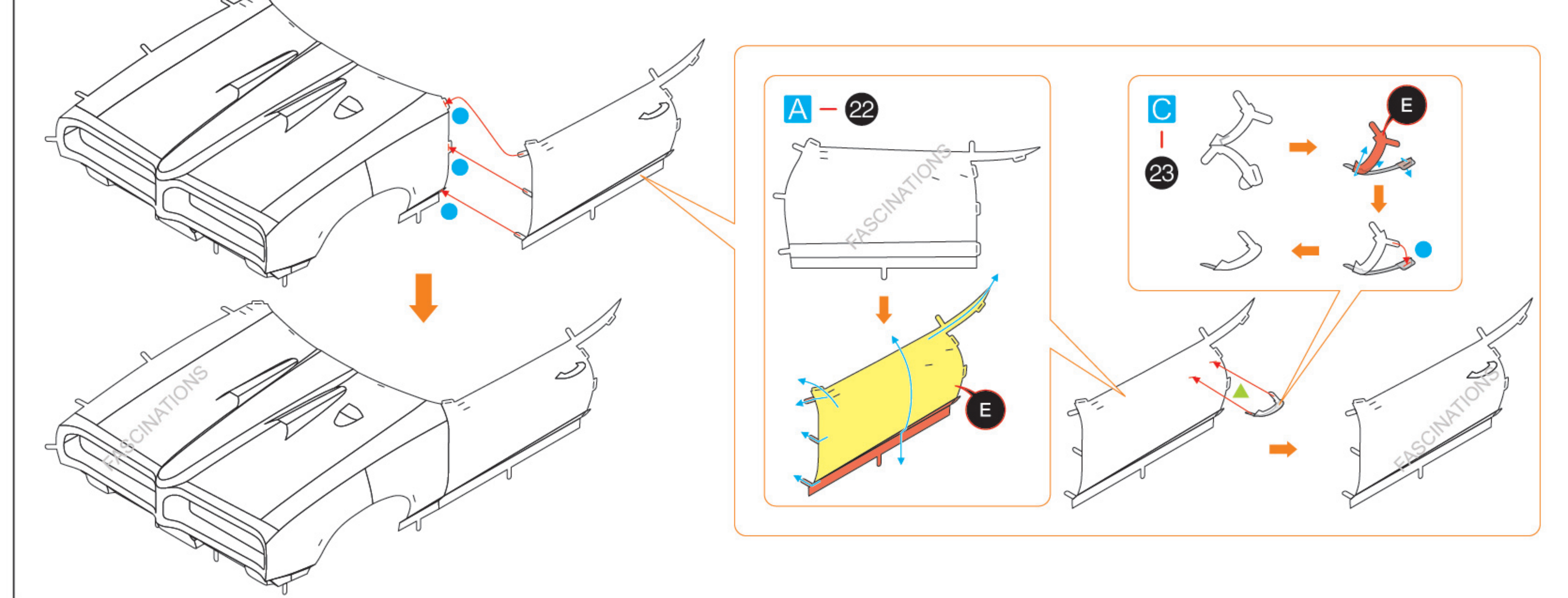
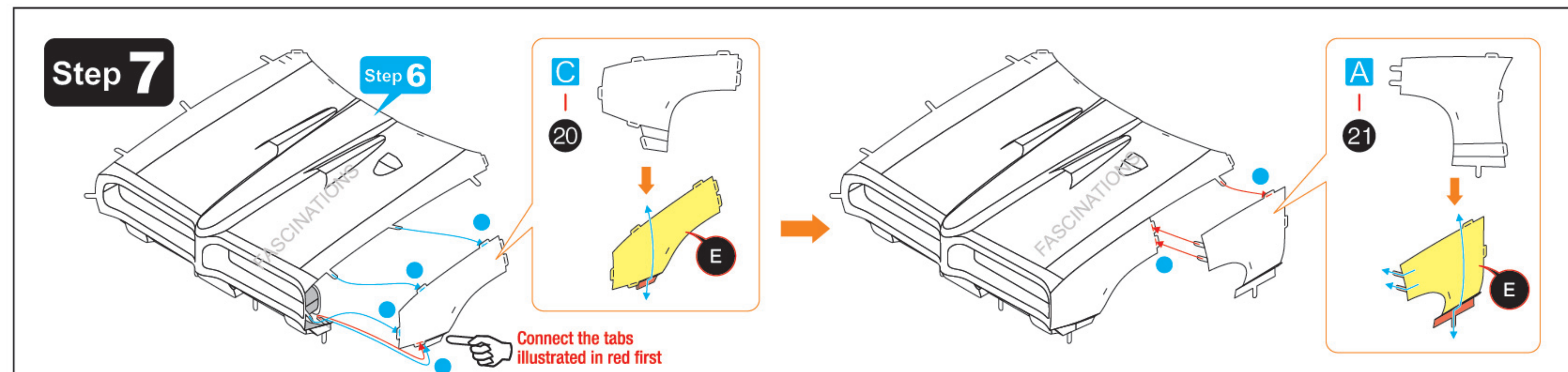
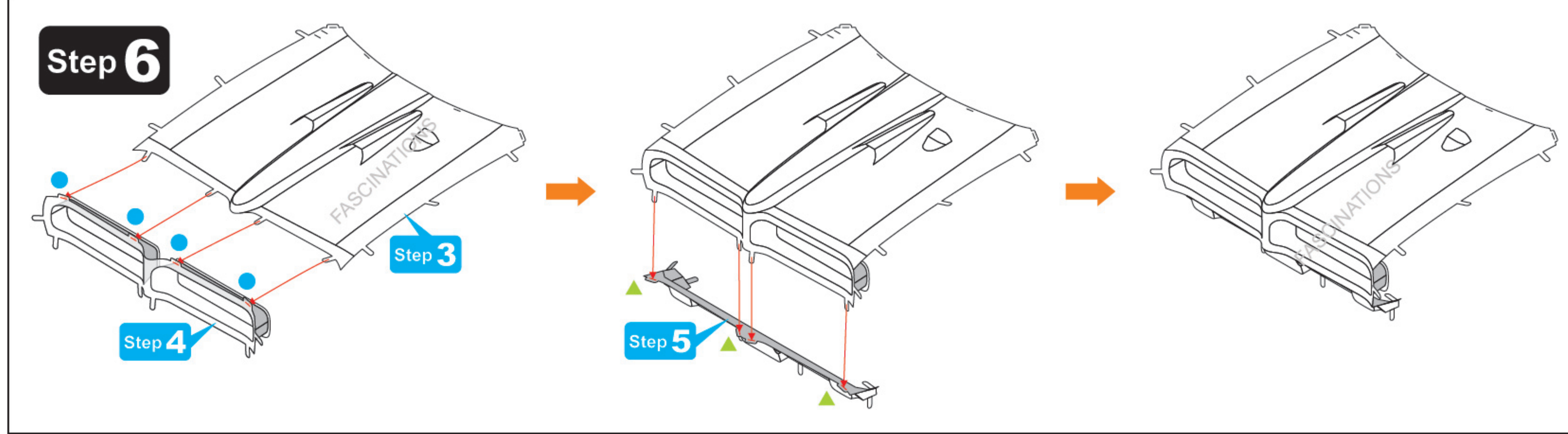
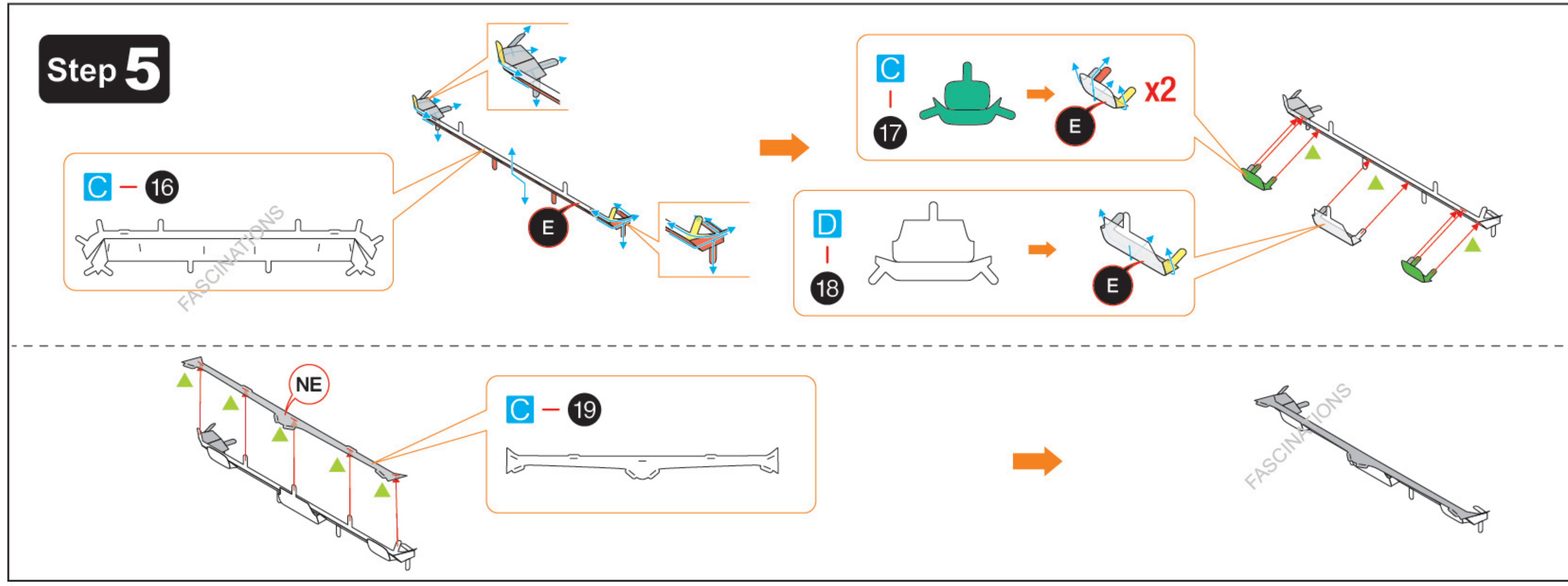
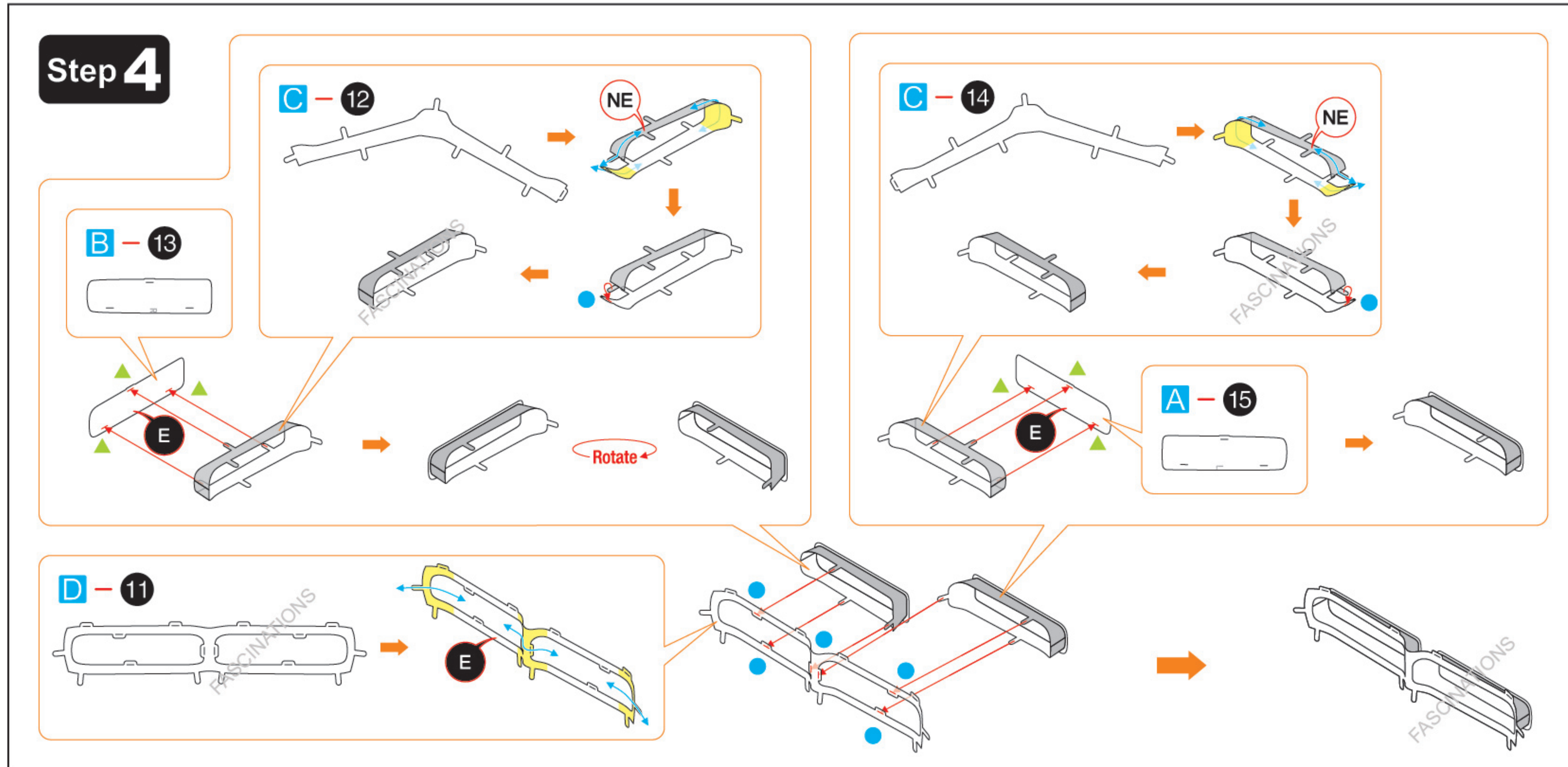
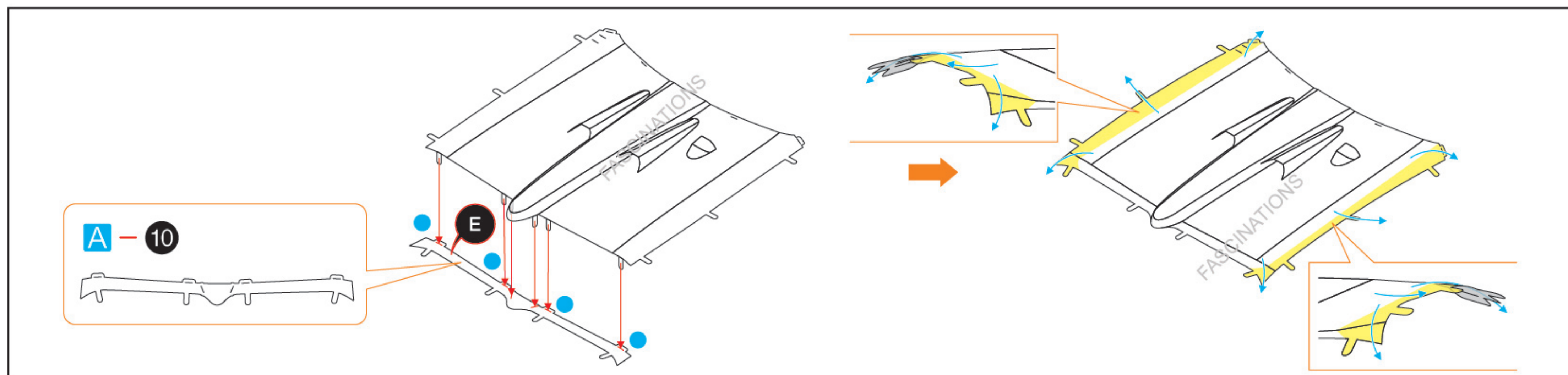


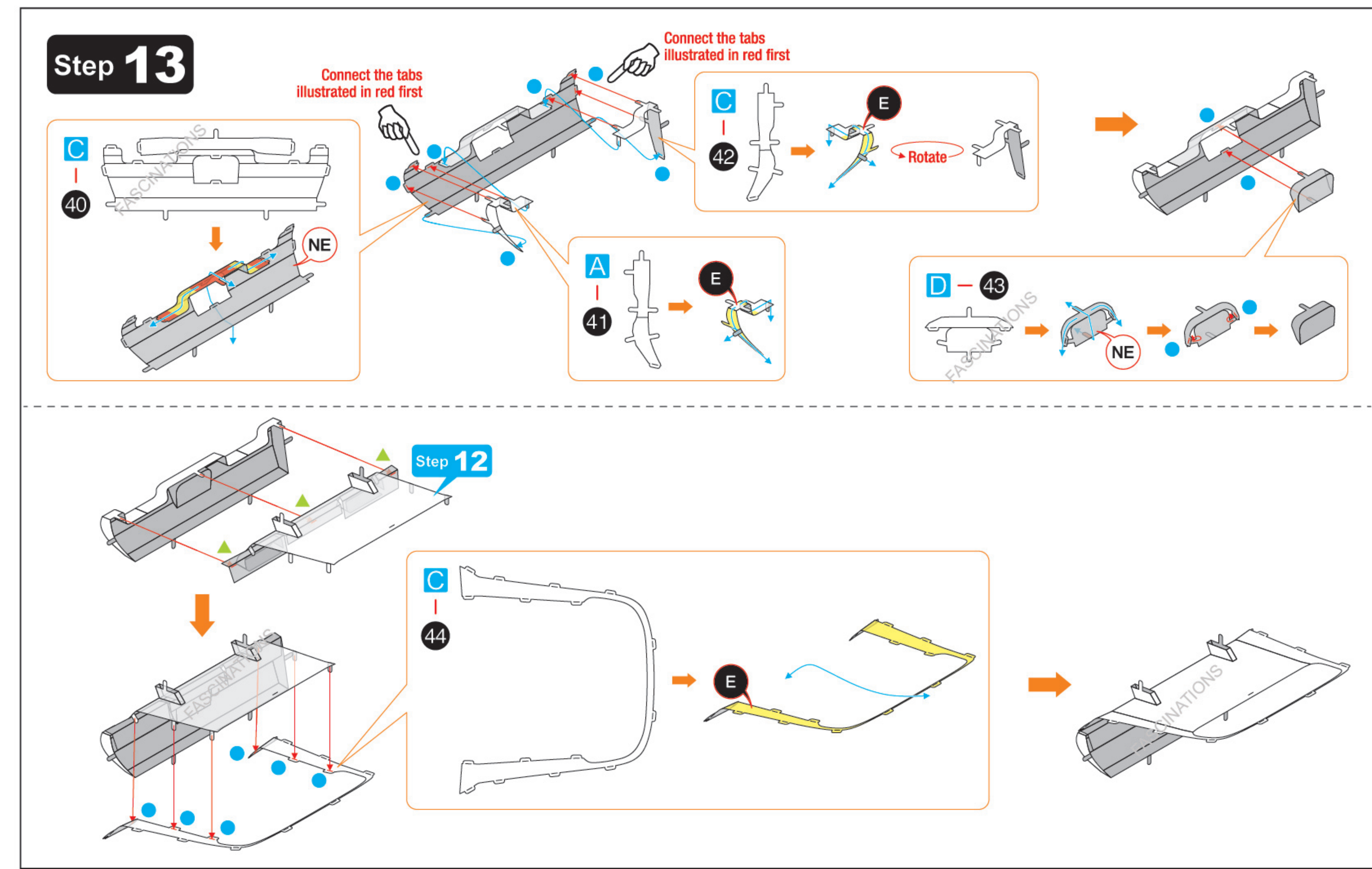
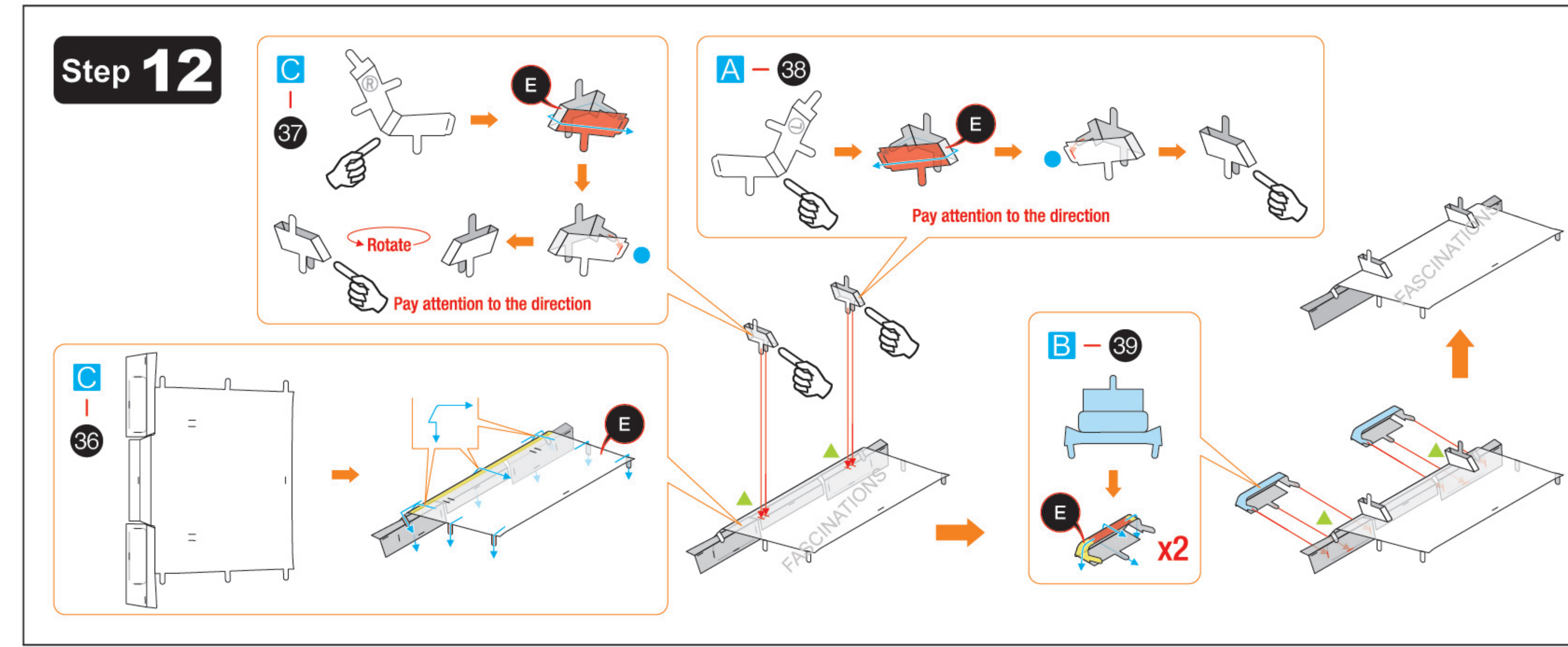
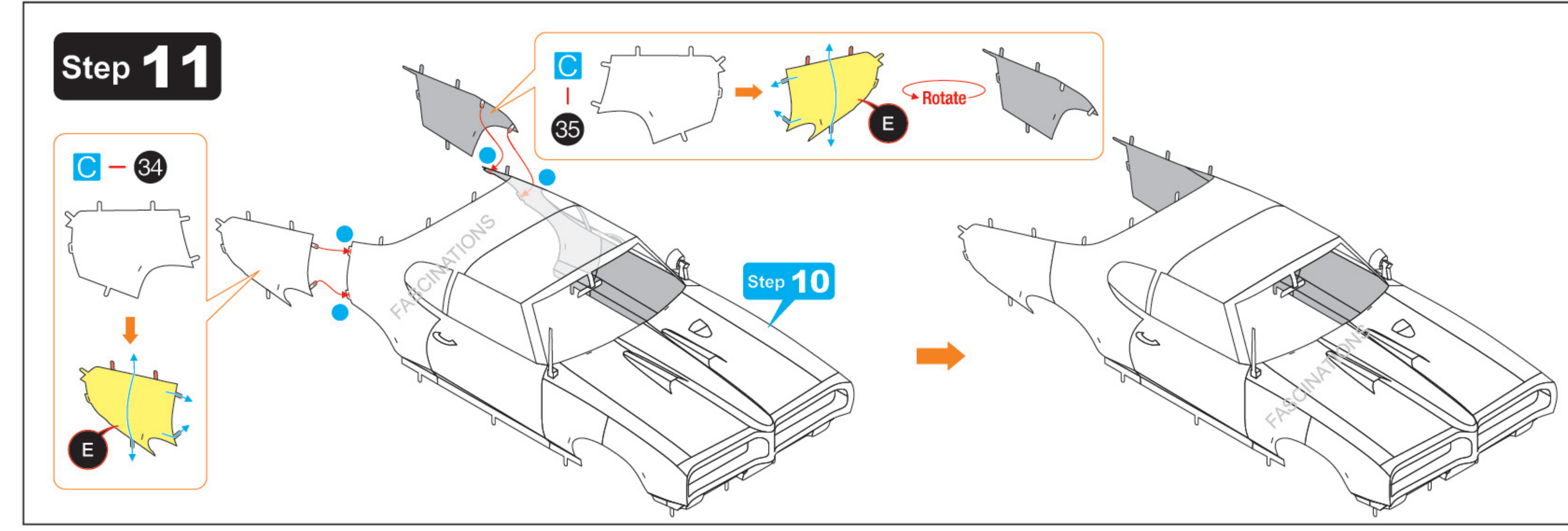
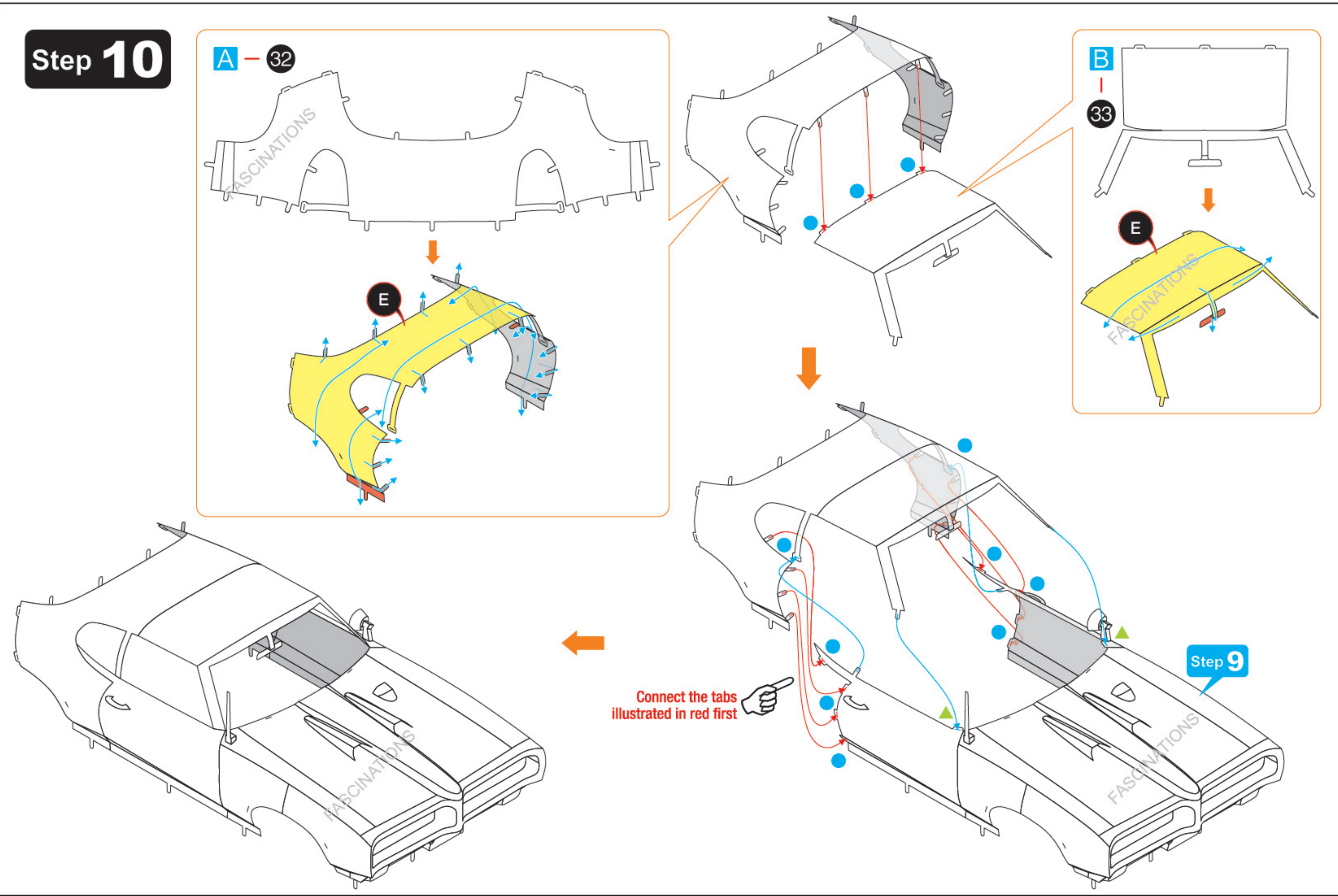
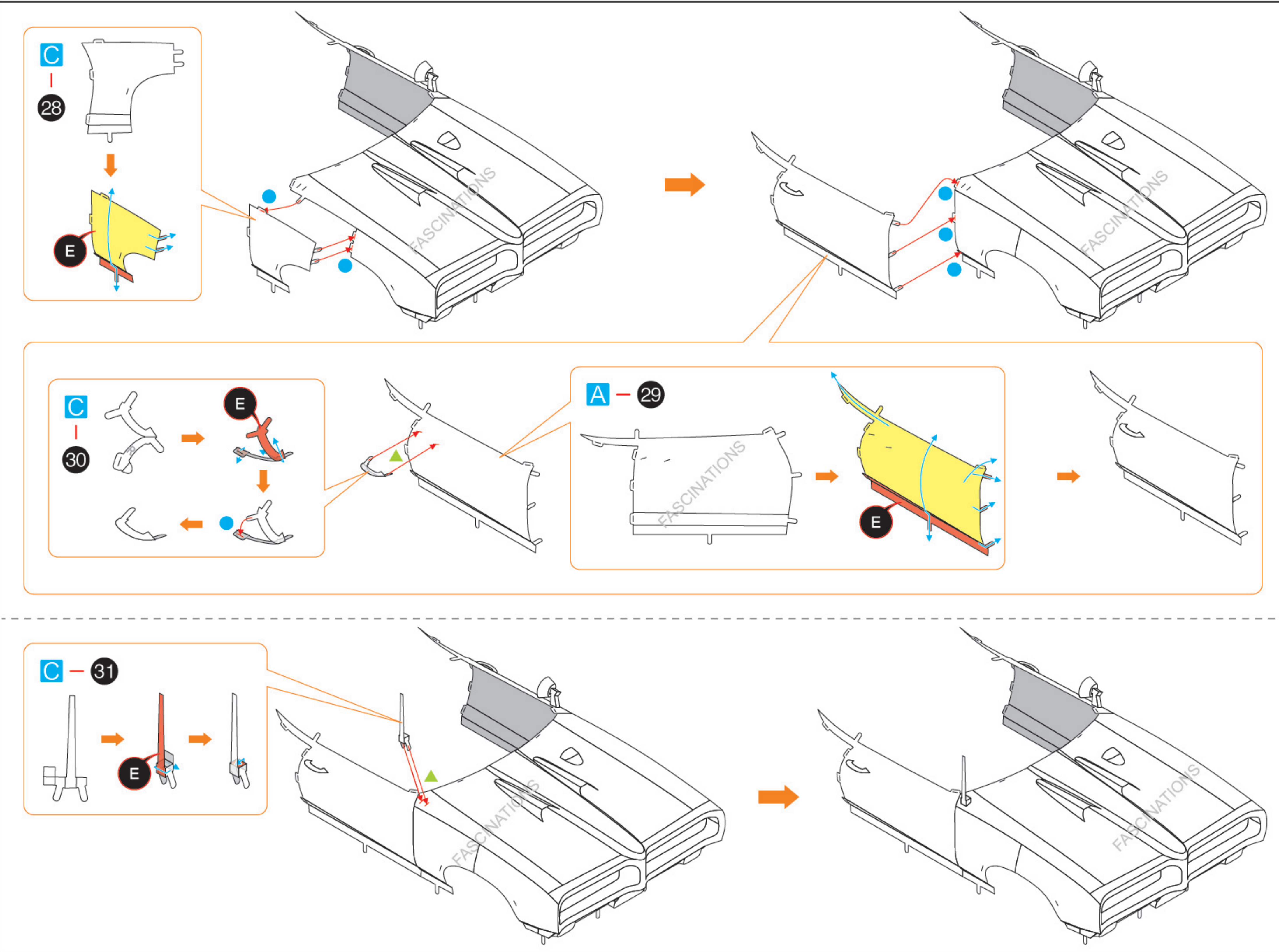
Step 2



Step 3







Step 14

Step 13

Connect the tabs illustrated in red first

Step 11

D - 45

E

Step 15

Pay attention to the direction

AB - 46

A - 47

E

AC - 48

E

AB - 49

E

CD - 50

E

Connect the tabs illustrated in red first

Step 16

A - 51

E

B - 52

E

D - 53

NE

D - 54

E

Step 17

B - 55

Step 16

E

Step 15

Step 15

Step 18

C - 59

E

A - 60

E

D - 61

E

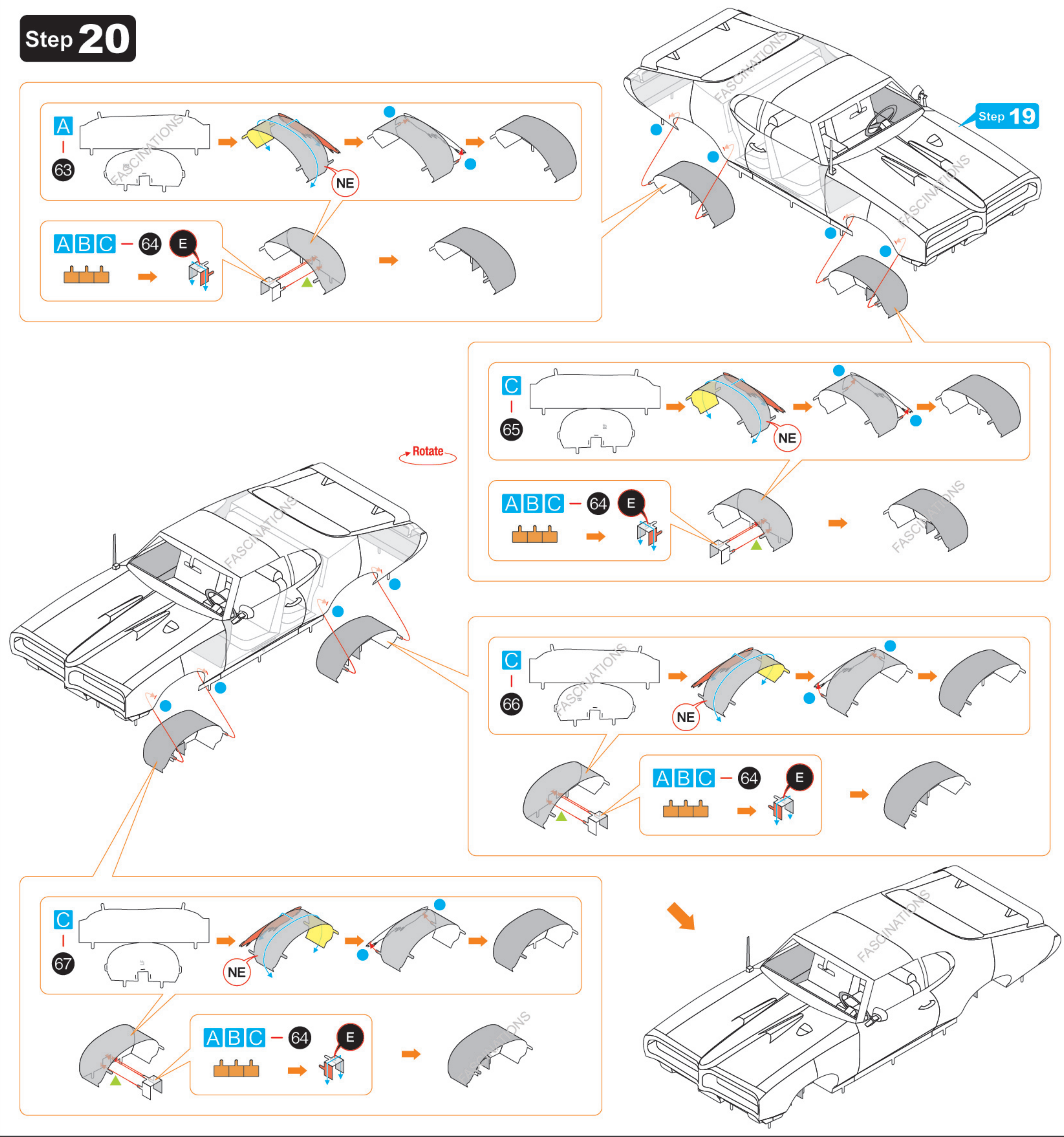
Step 17

Step 19

Step 14

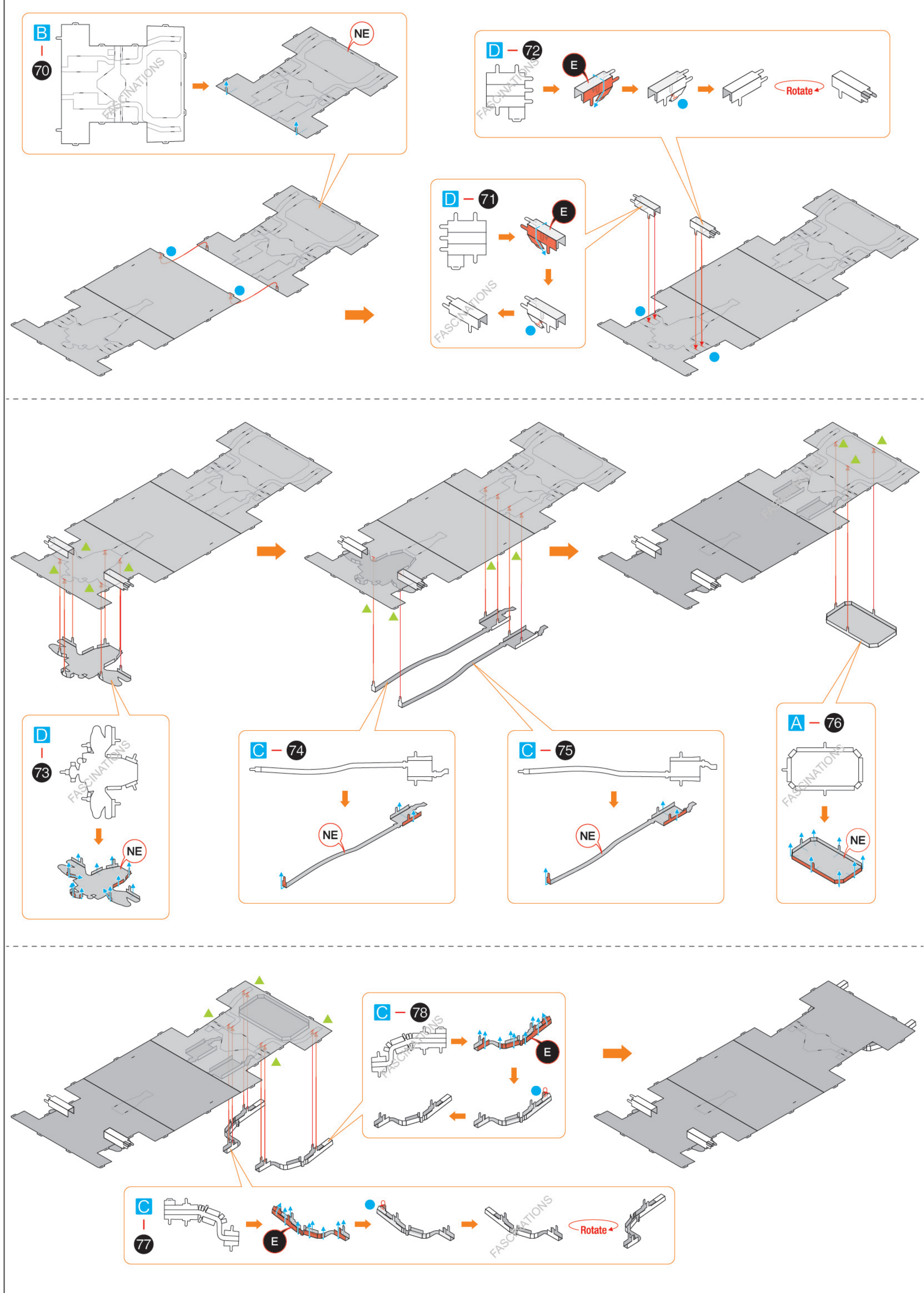
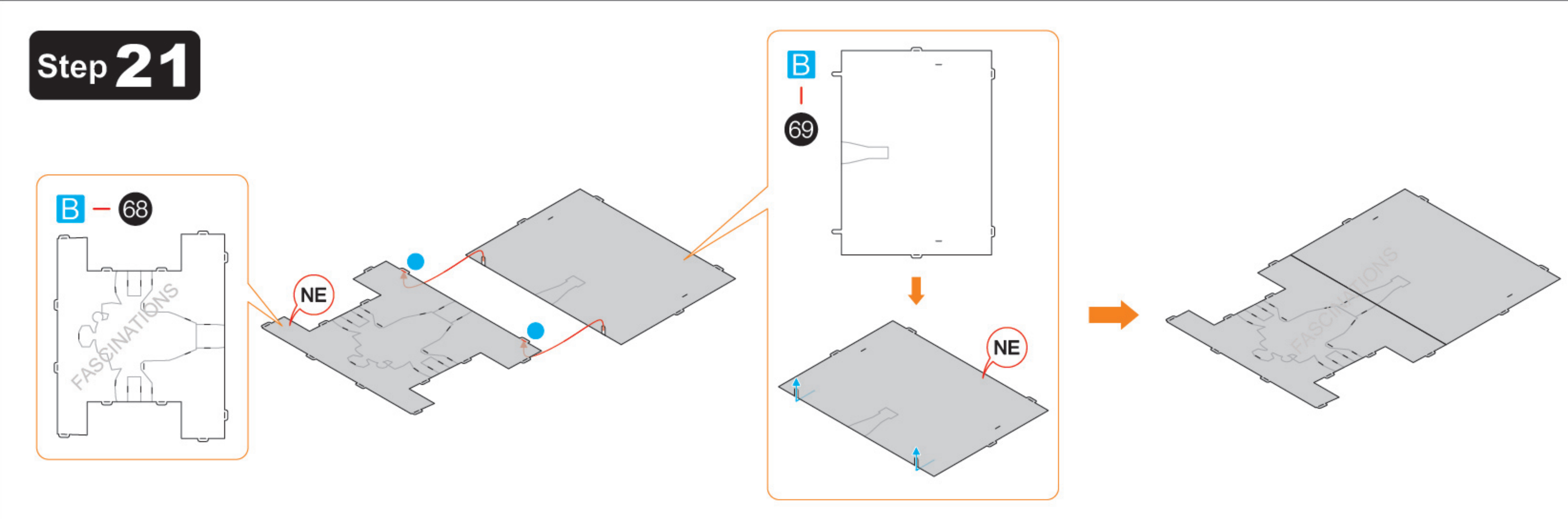
Step 18

Step 20

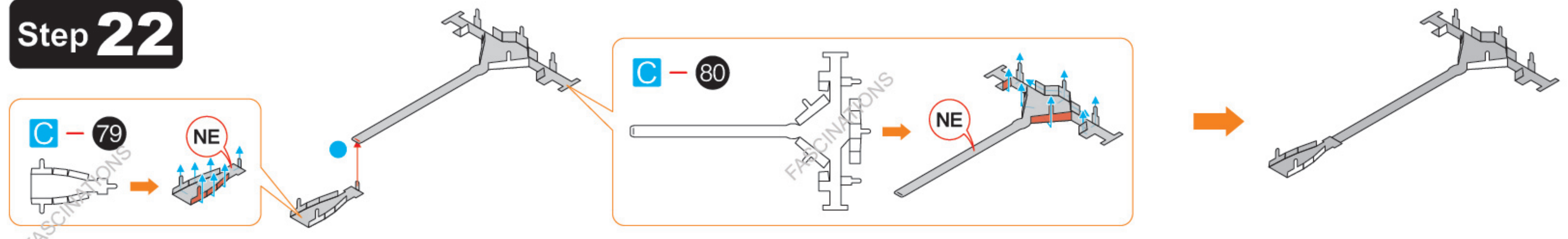


Step 19

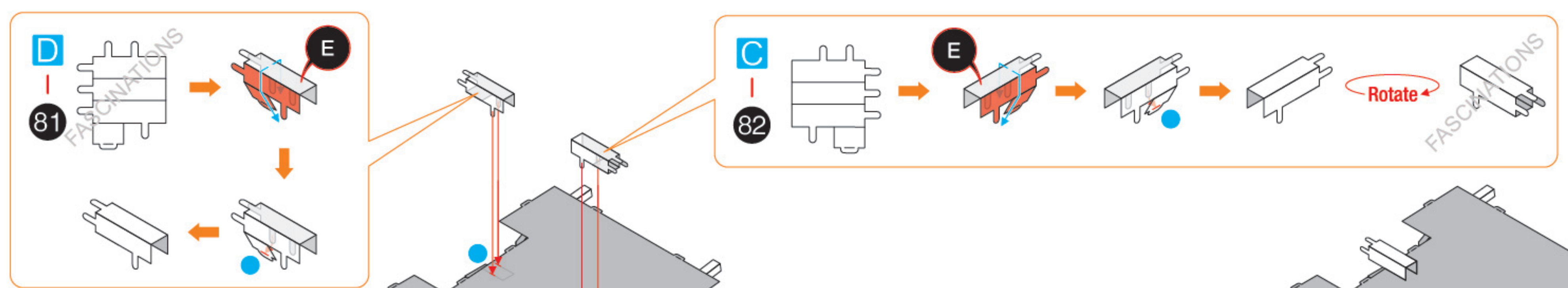
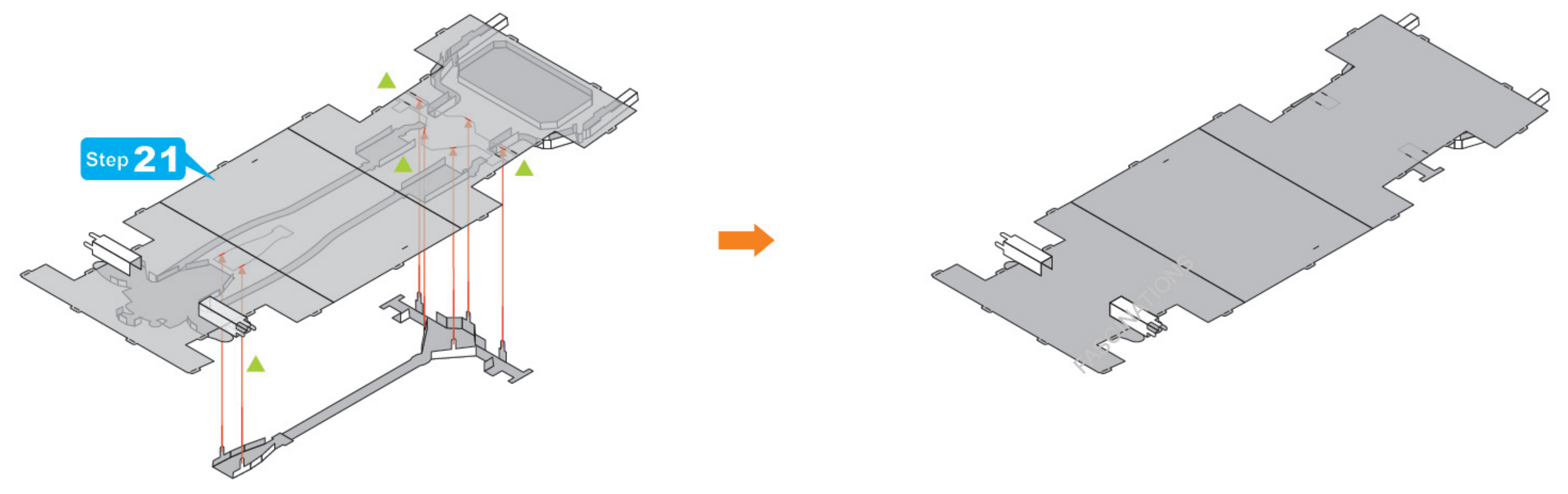
Step 21



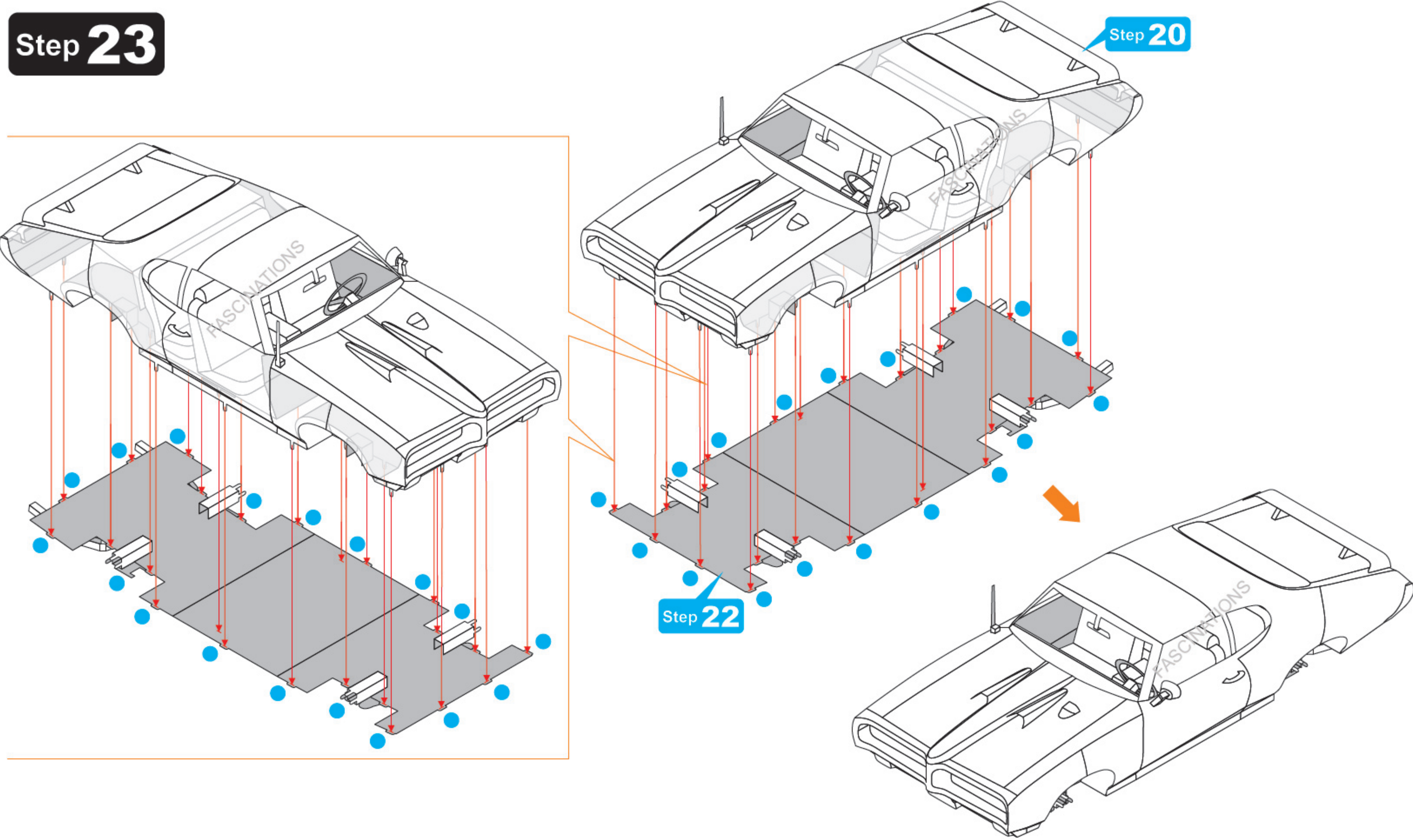
Step 22



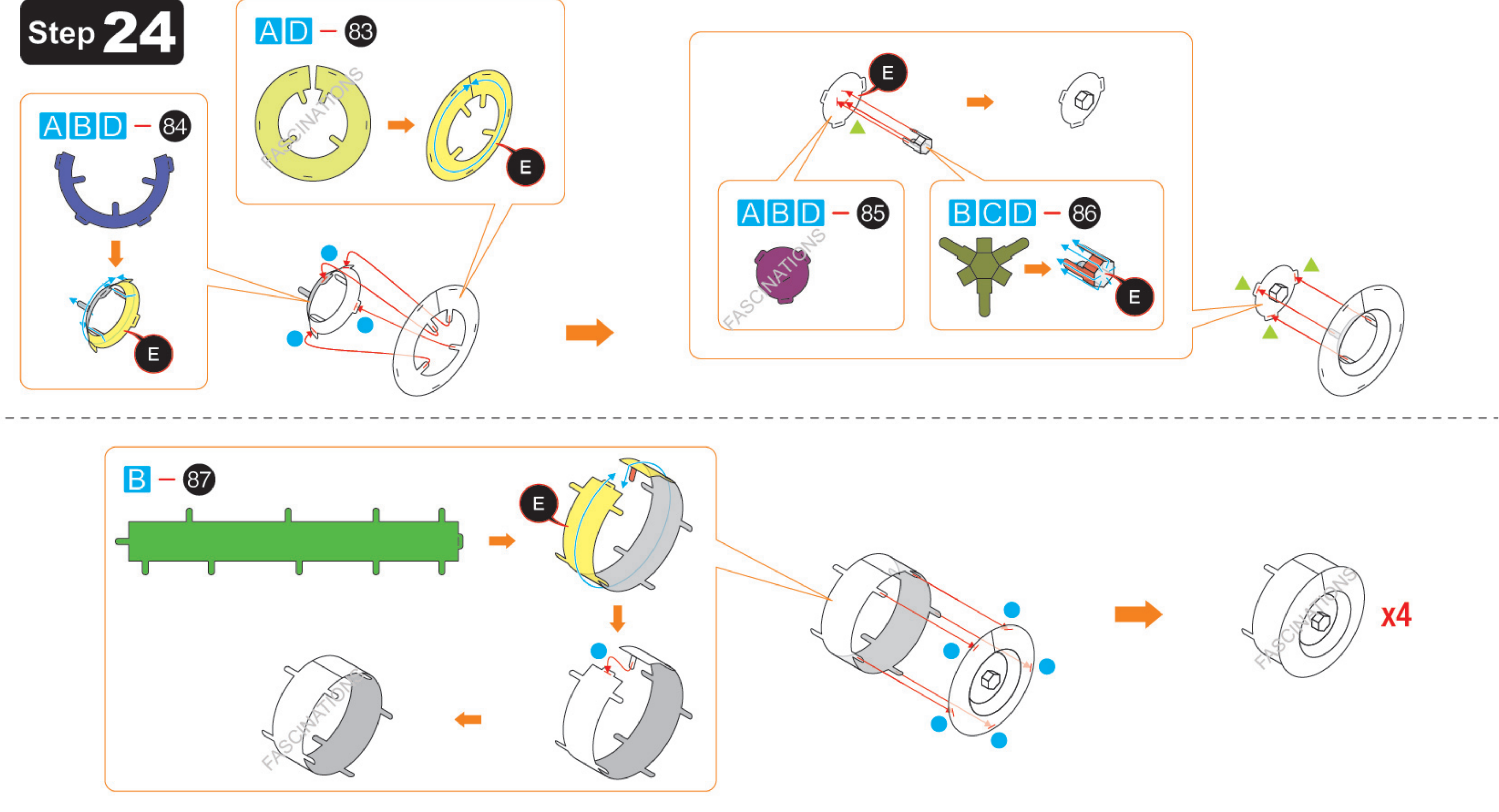
Step 21



Step 23



Step 24



Step 25

