

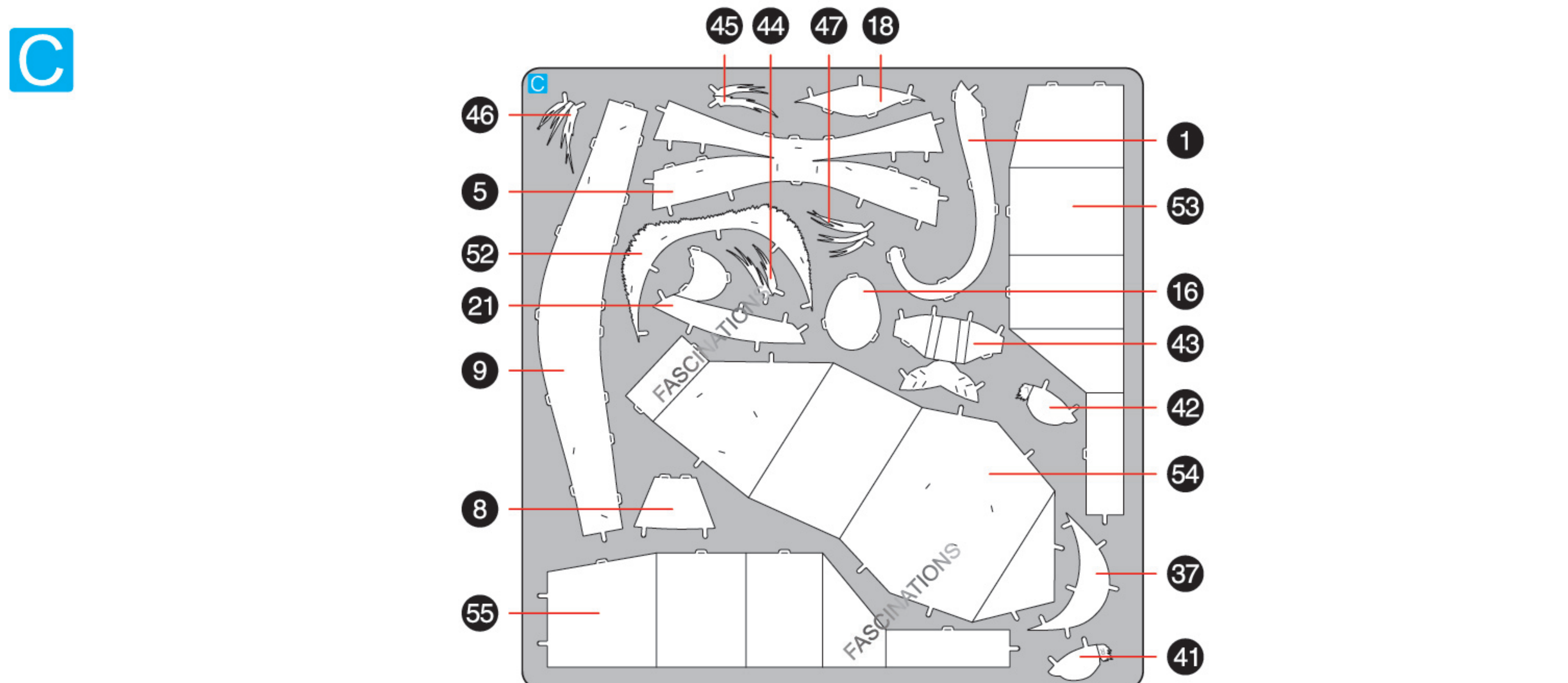
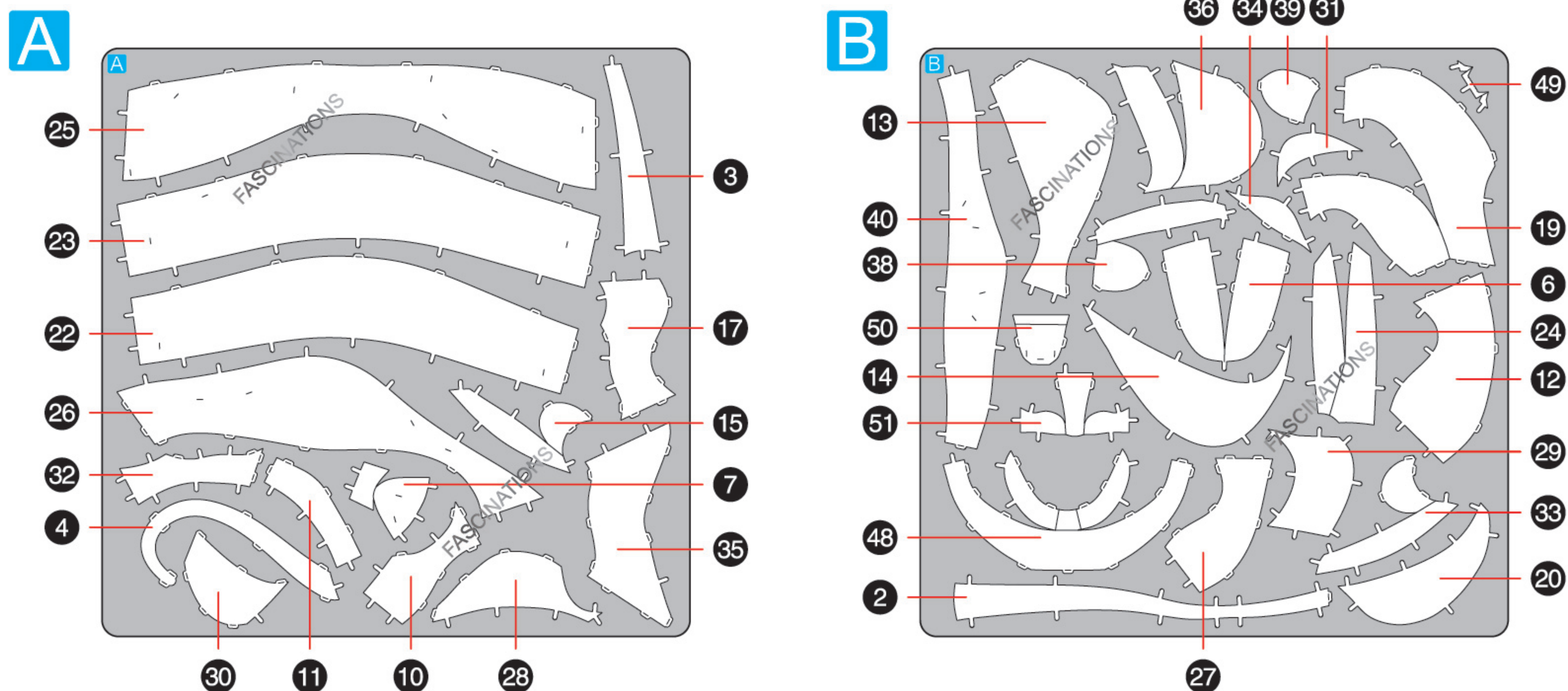
BENGAL TIGER
ME1029



360°
view

It is highly recommended that you visit
www.metal-earth.com/360/ME1029
to see the completed model before assembling your own

METAL SHEETS

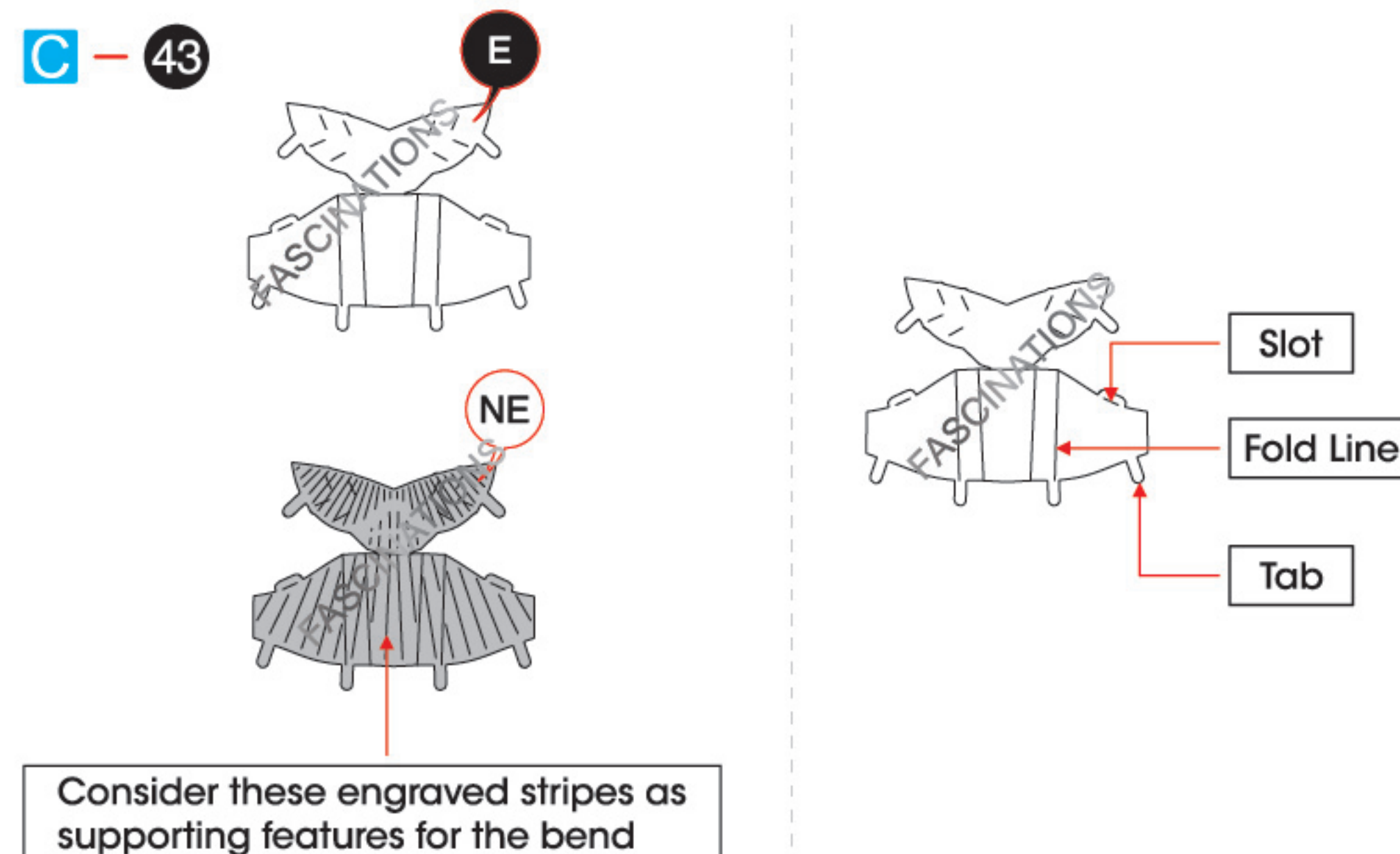


In order to avoid possible injury from sharp edges, please carefully discard the metal sheets after parts have been removed.



Go to www.metal-earth.com/360/ME1029 to see the zoomable PDF version of this instruction sheet

TO CREATE THE BEST CONNECTIONS



Legends:

- E** Engraved/ Color side
- NE** Non - engraved/ Silver side
- Attention point
- Insert tab and bend 90 degrees
- Insert tab and twist 90 degrees

Assembly tip:

If needed, slightly twist tabs to hold parts together then untwist and bend them down for a nice finish.

- Yellow areas should be curled
- Red areas should be folded

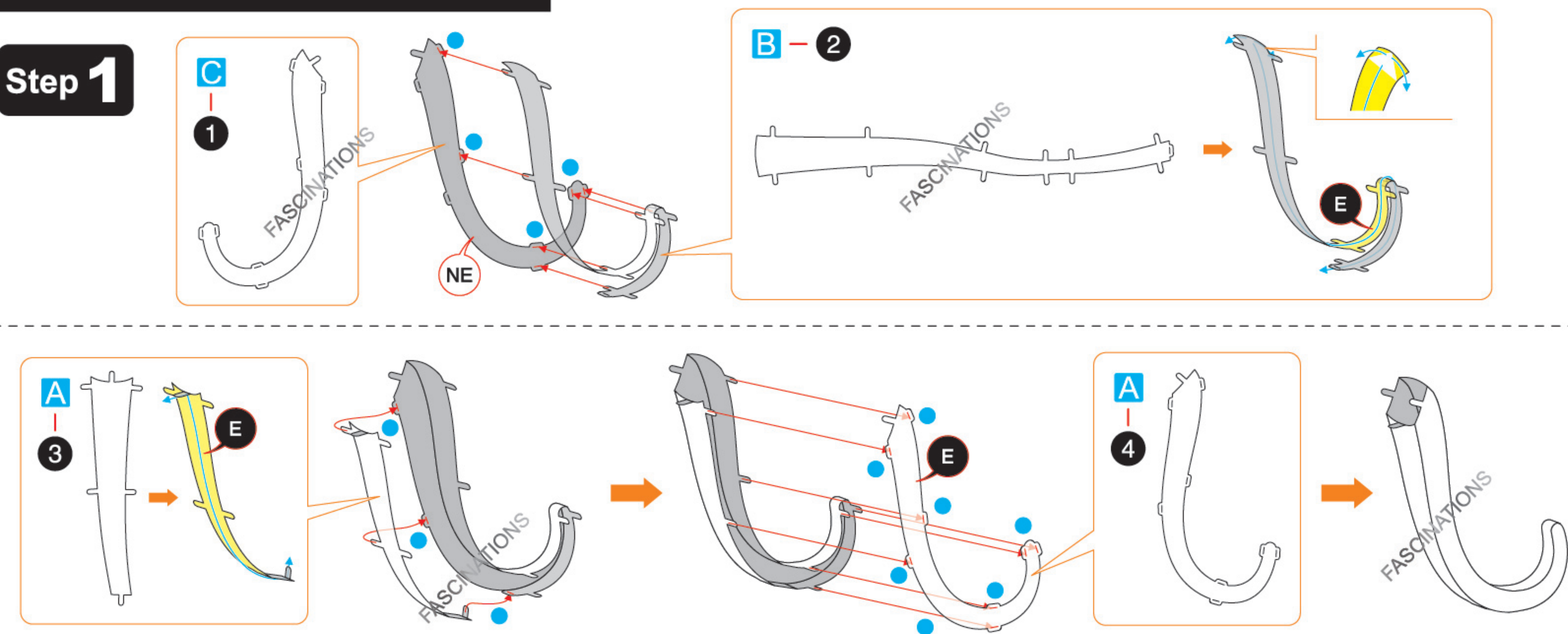
Recommended tools:

- Wire cutters: helpful for taking parts from the metal sheets.

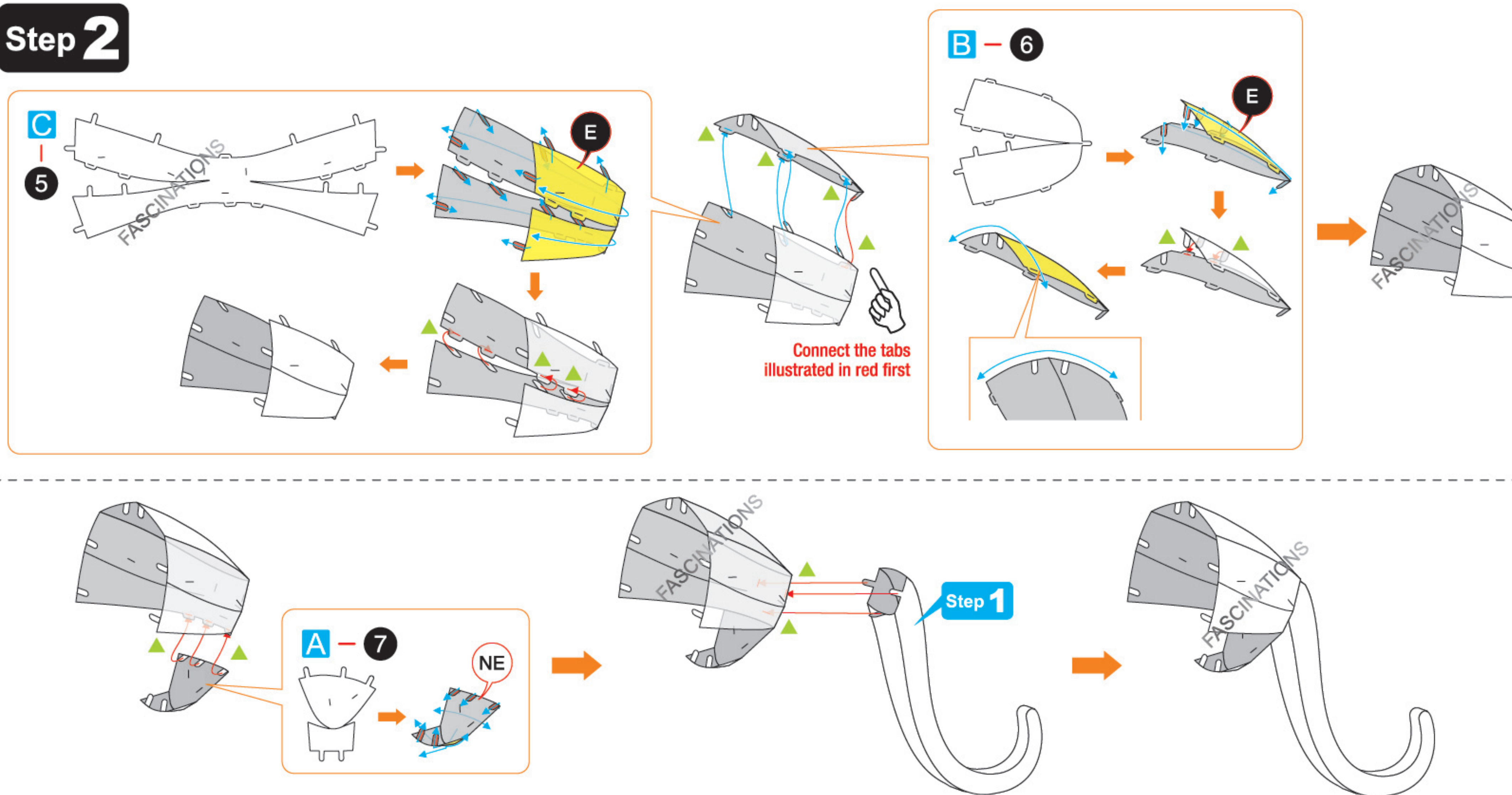
- Tweezers or needle nose pliers: helpful for folding parts, bending and twisting tabs.

ASSEMBLY FLOW CHART

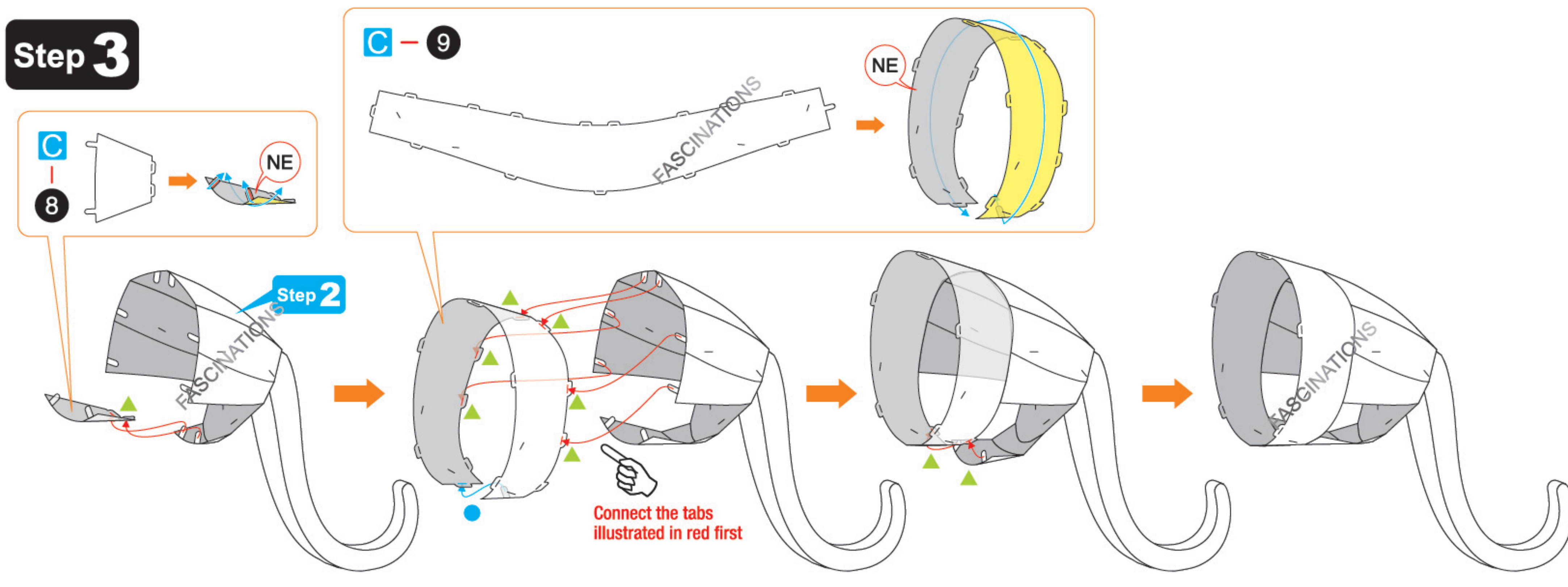
Step 1



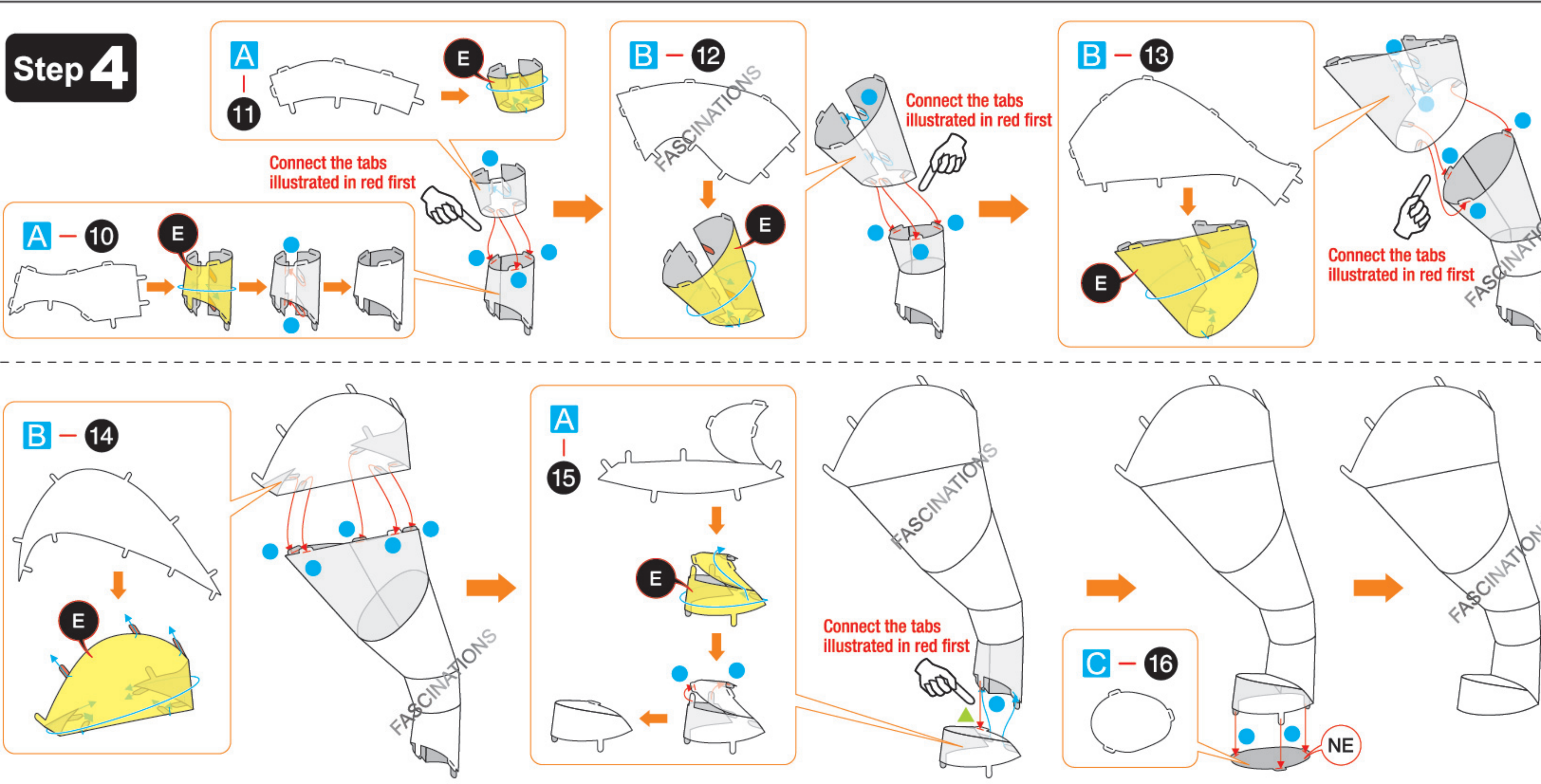
Step 2



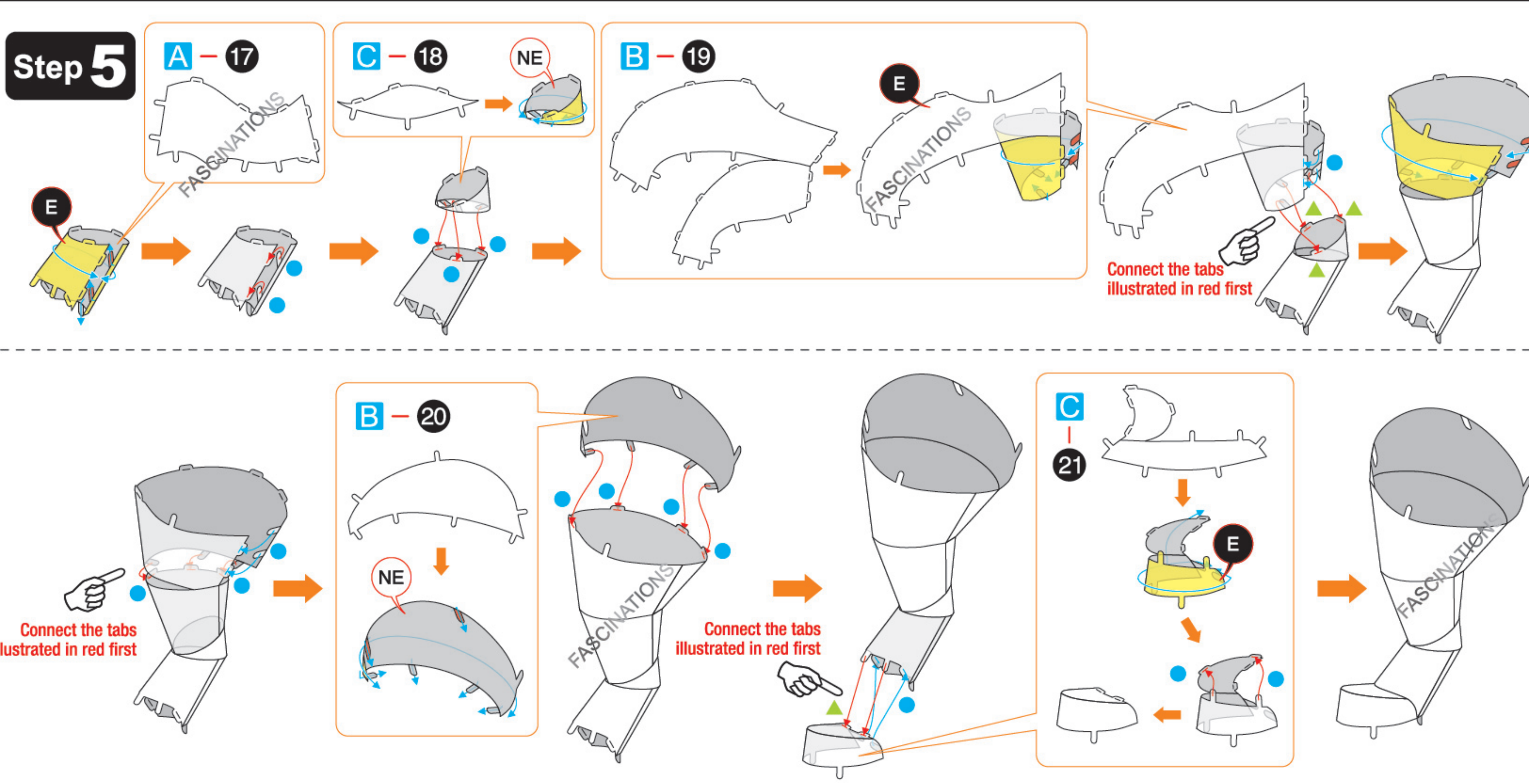
Step 3



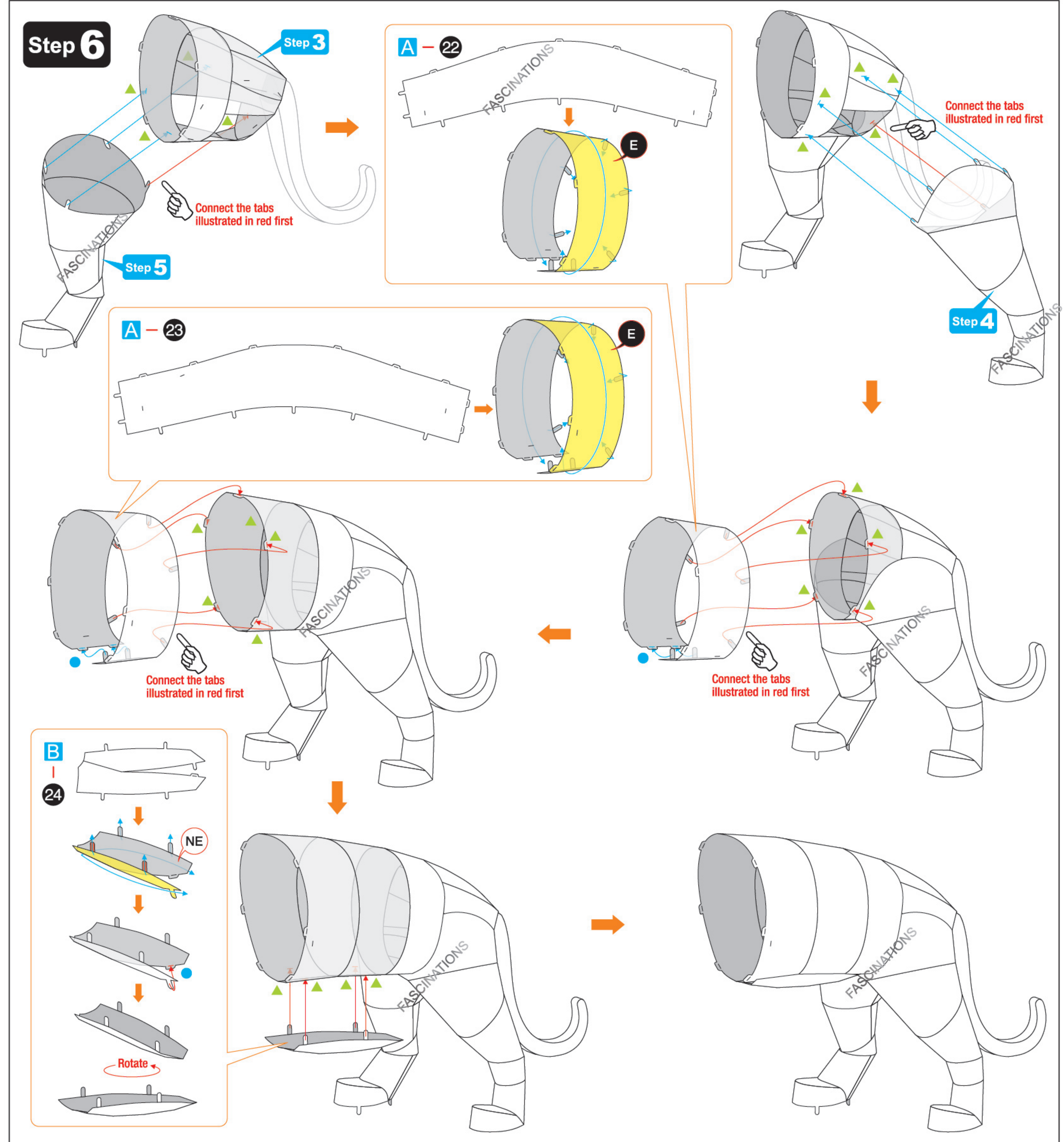
Step 4



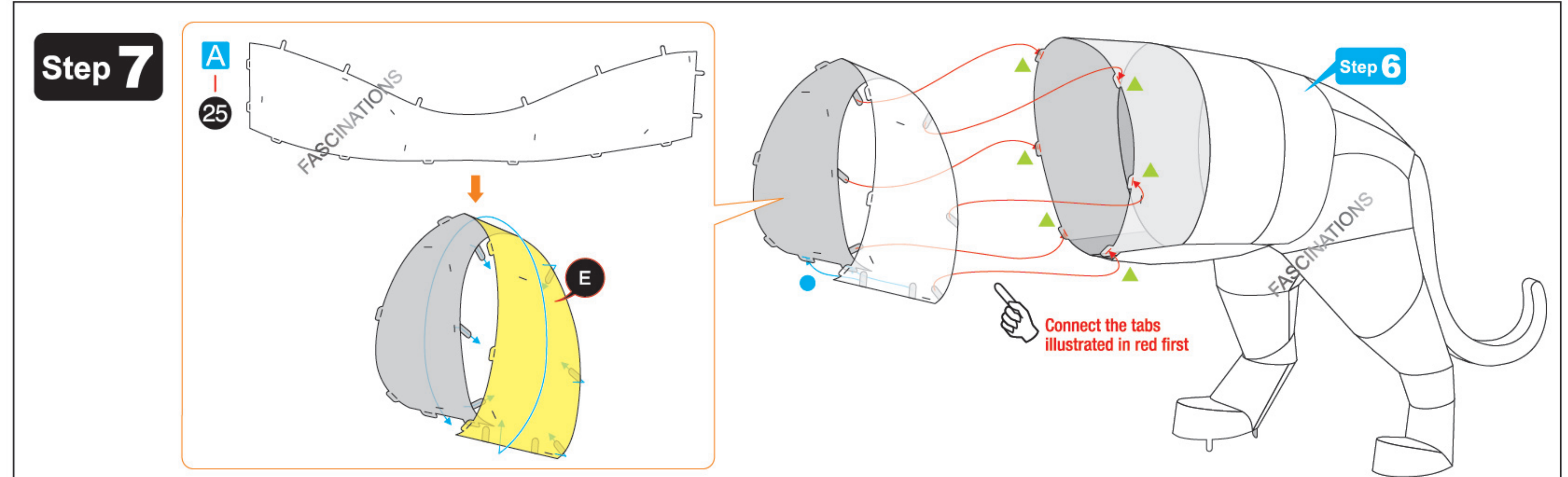
Step 5

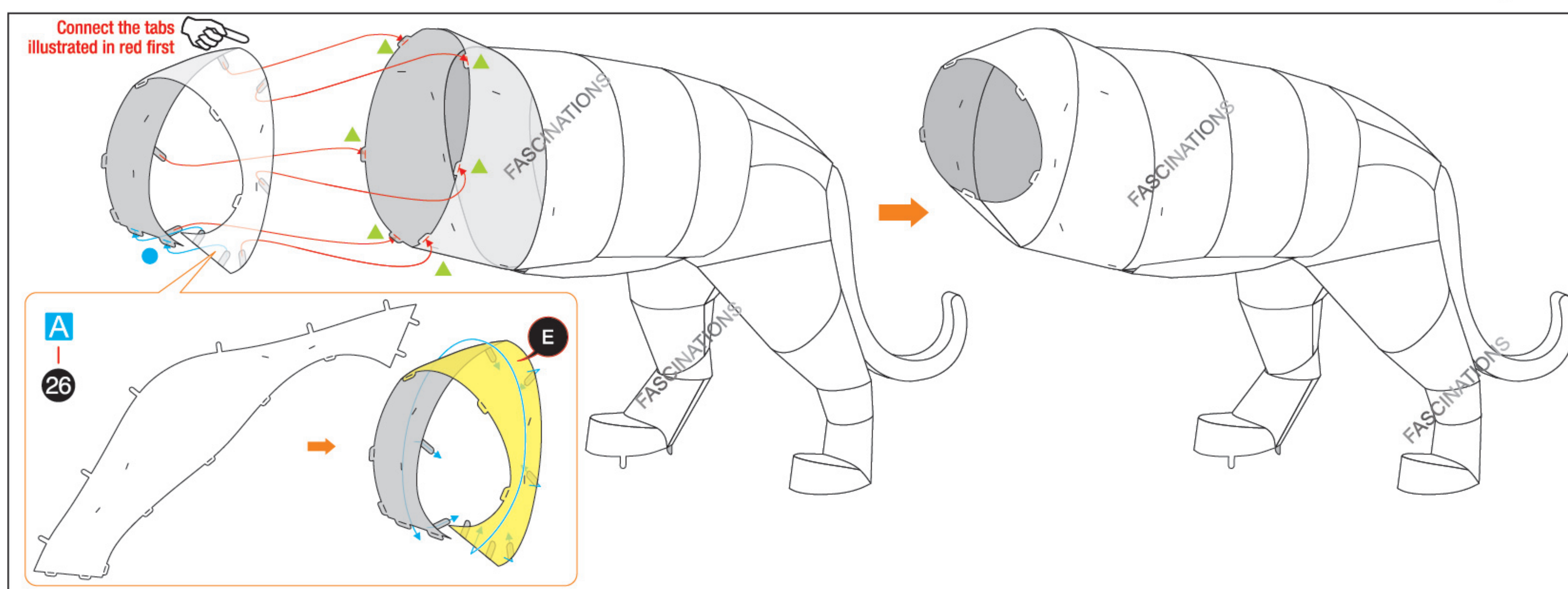


Step 6

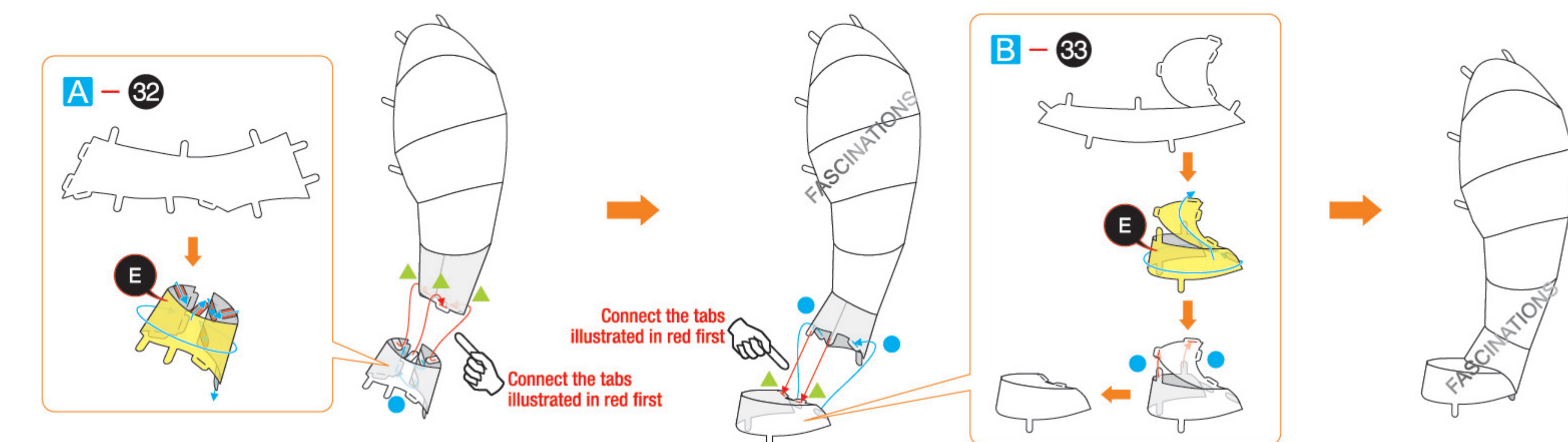
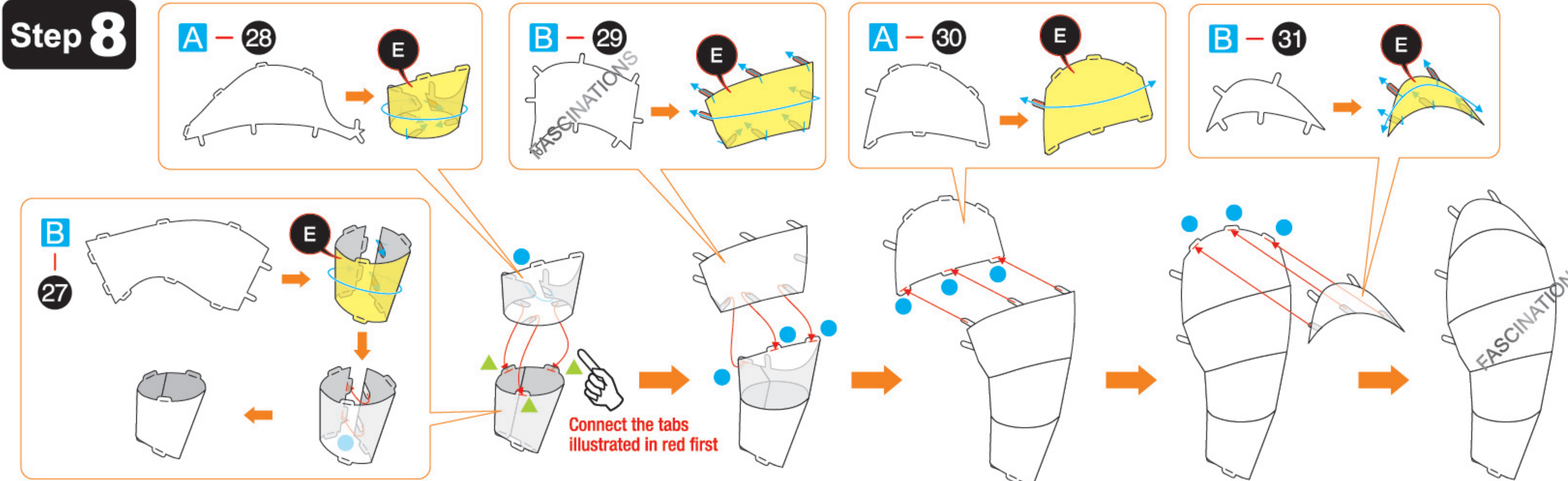


Step 7

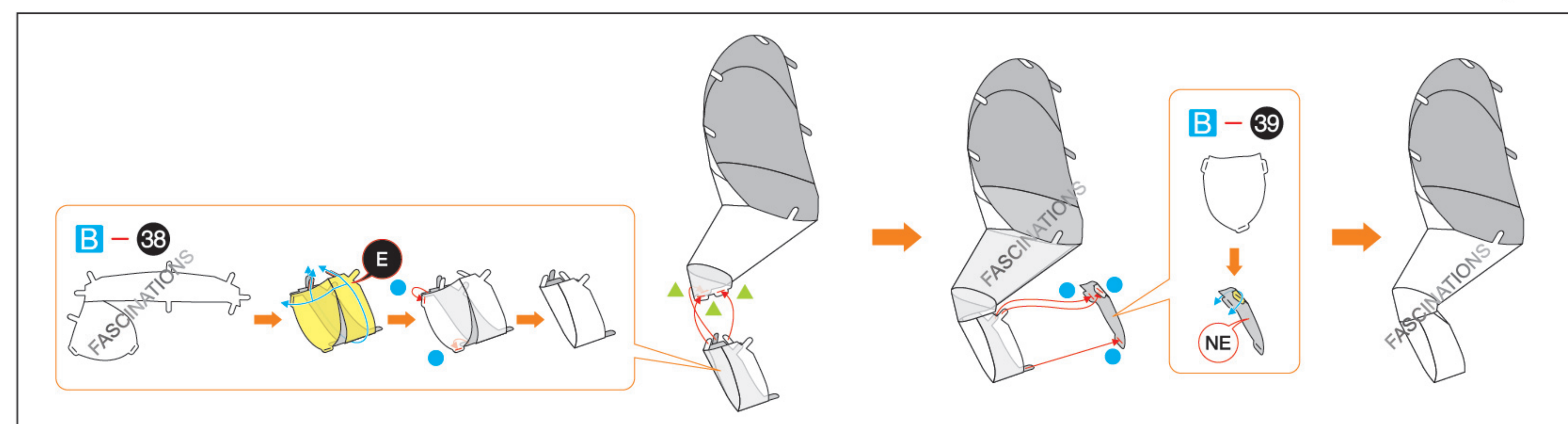
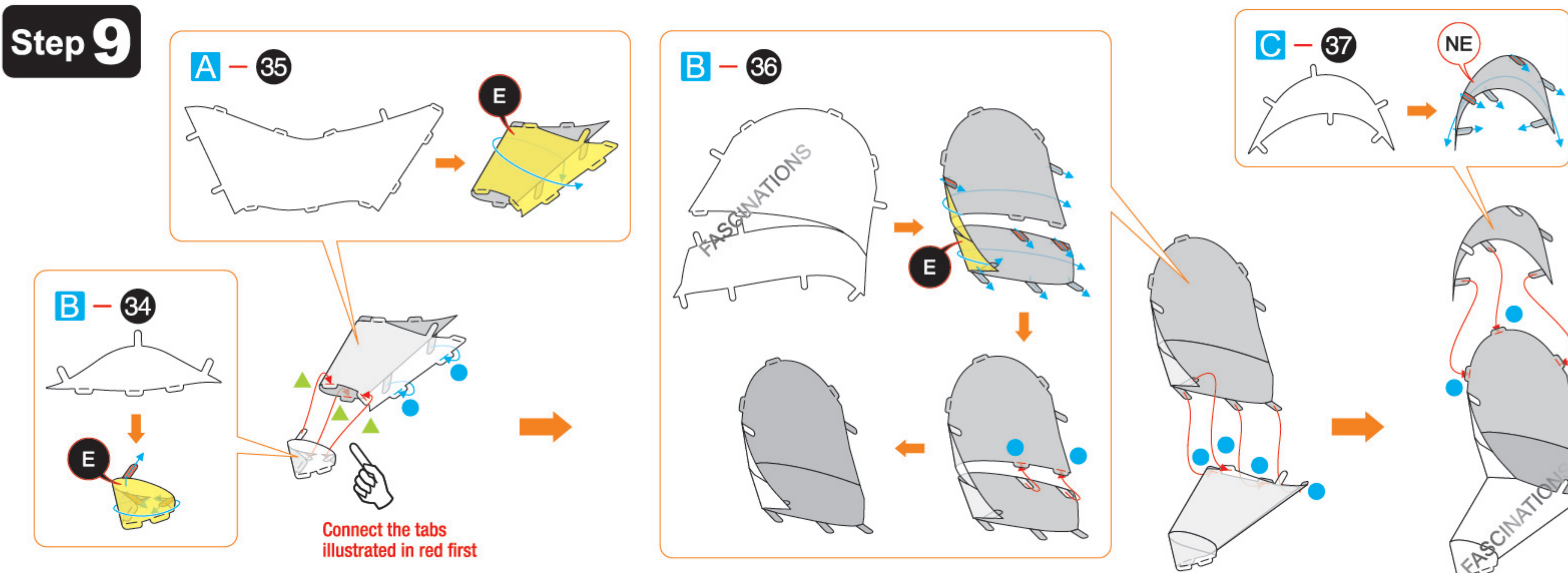




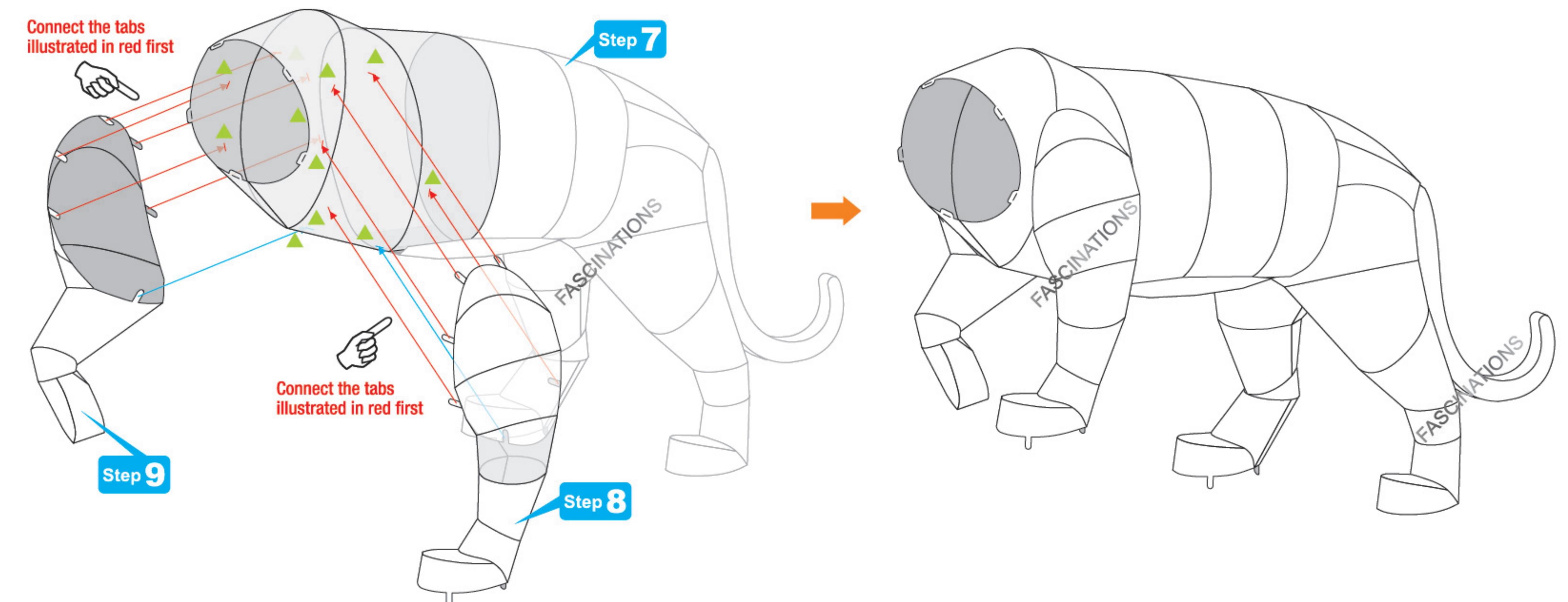
Step 8



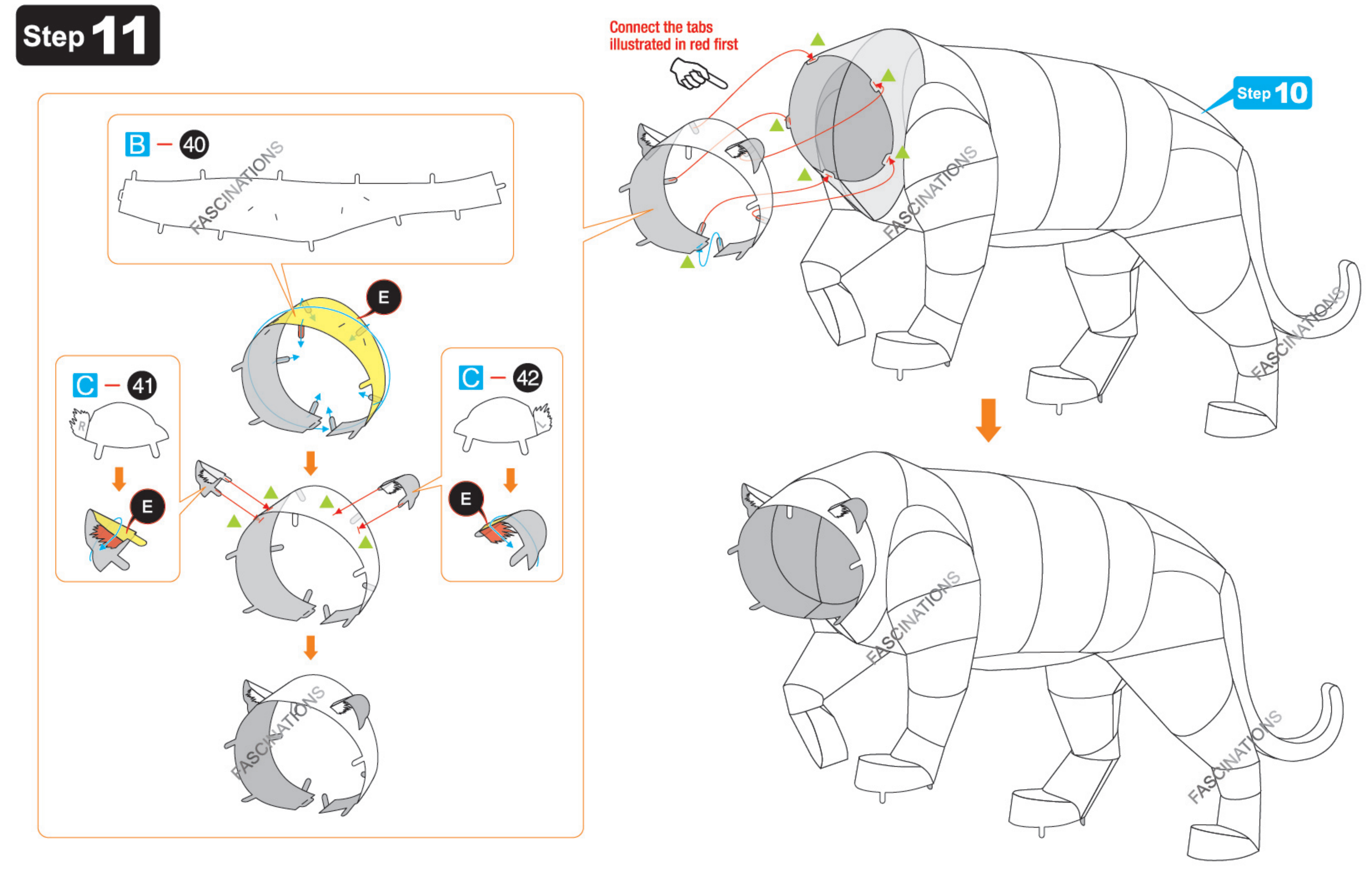
Step 9



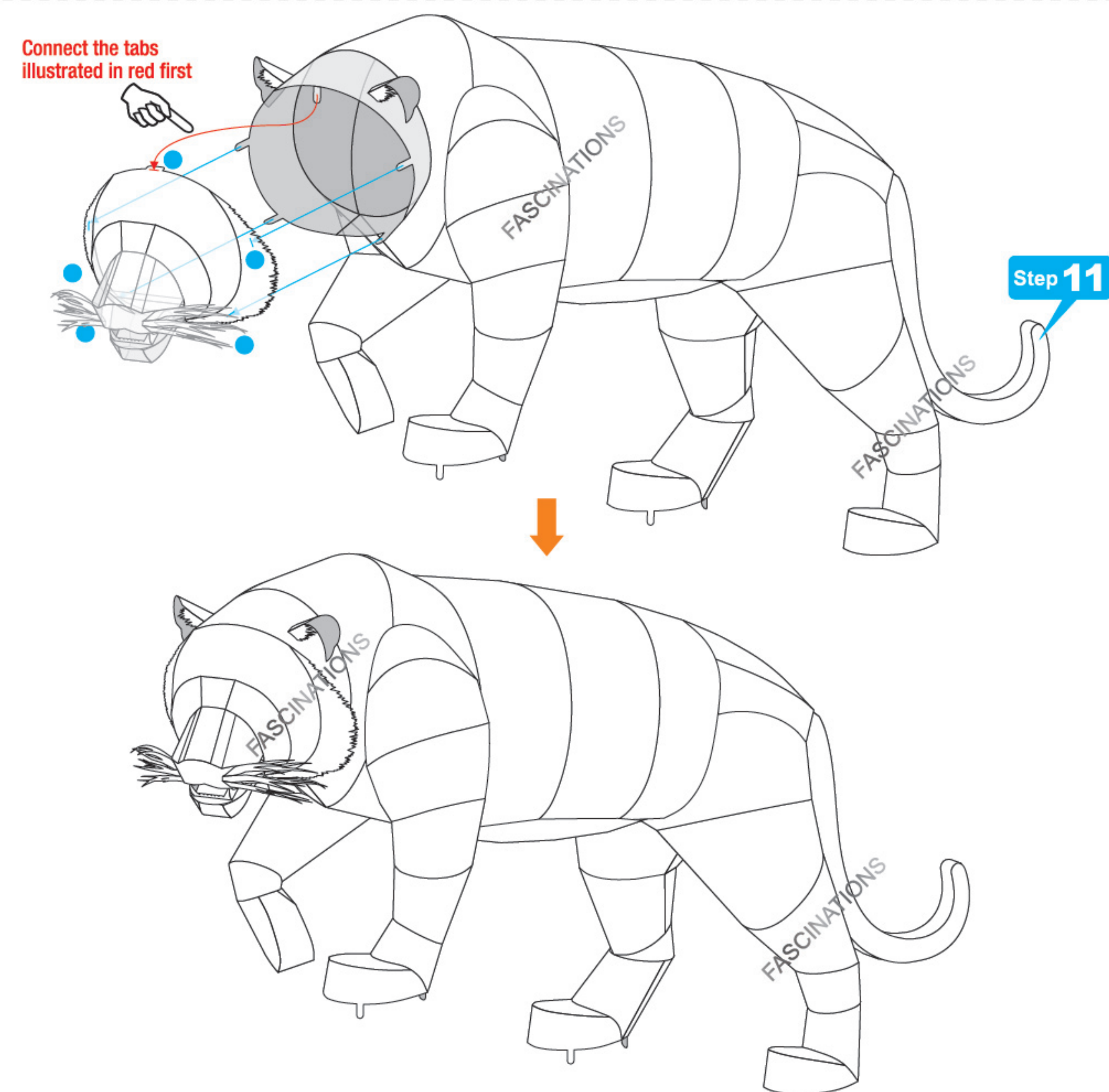
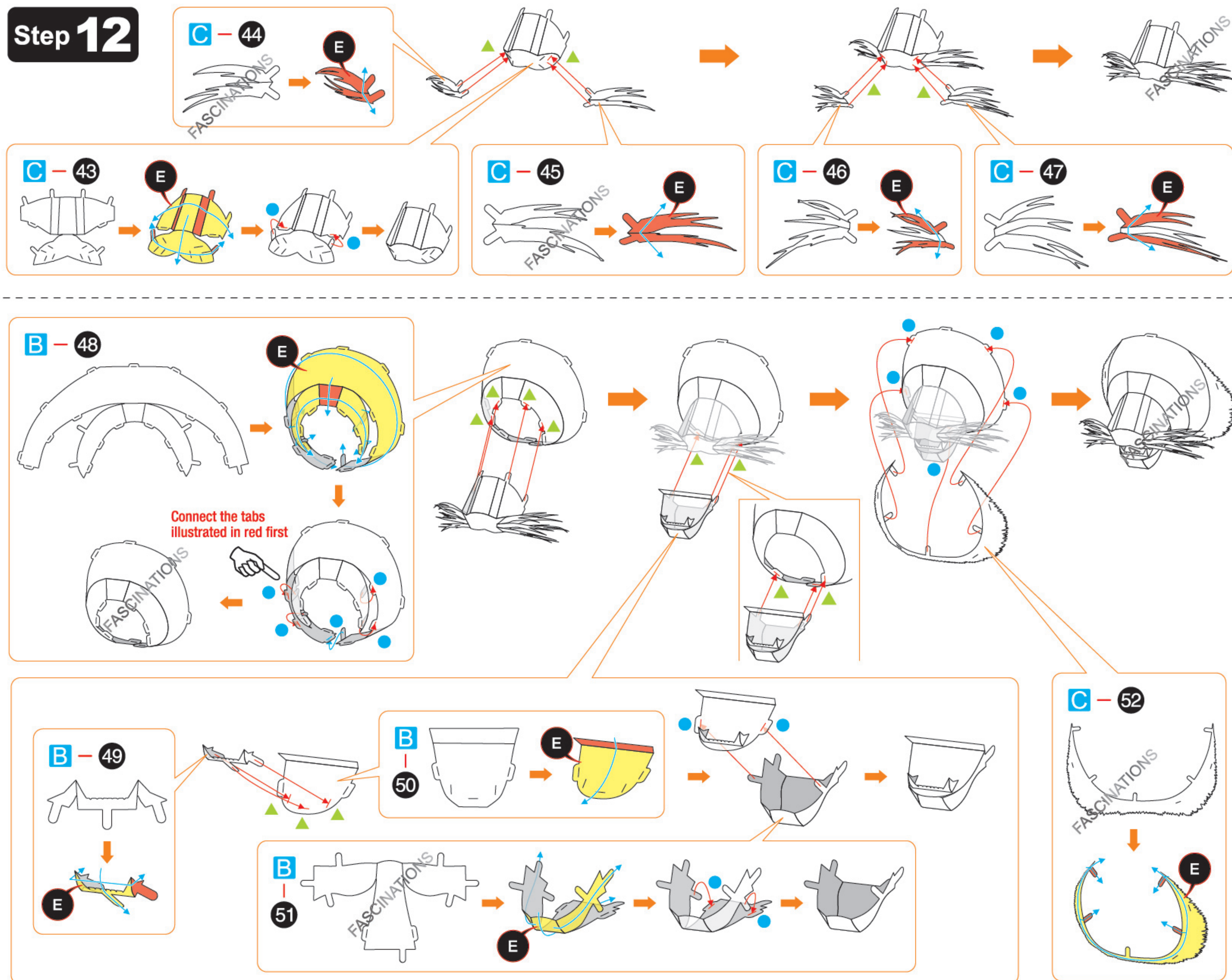
Step 10



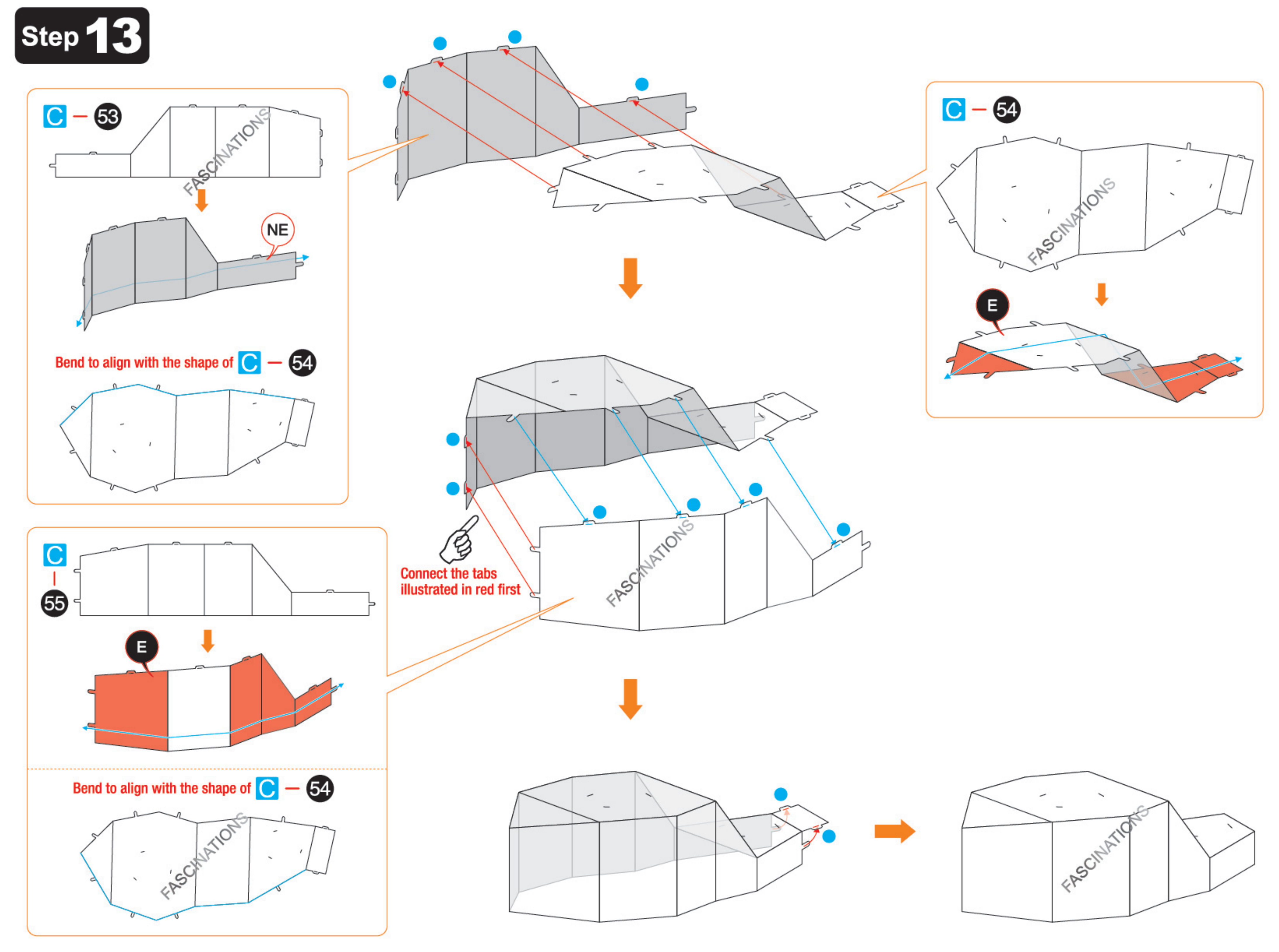
Step 11



Step 12



Step 13



Step 14

