

**F4U CORSAIR™**  
ME1030

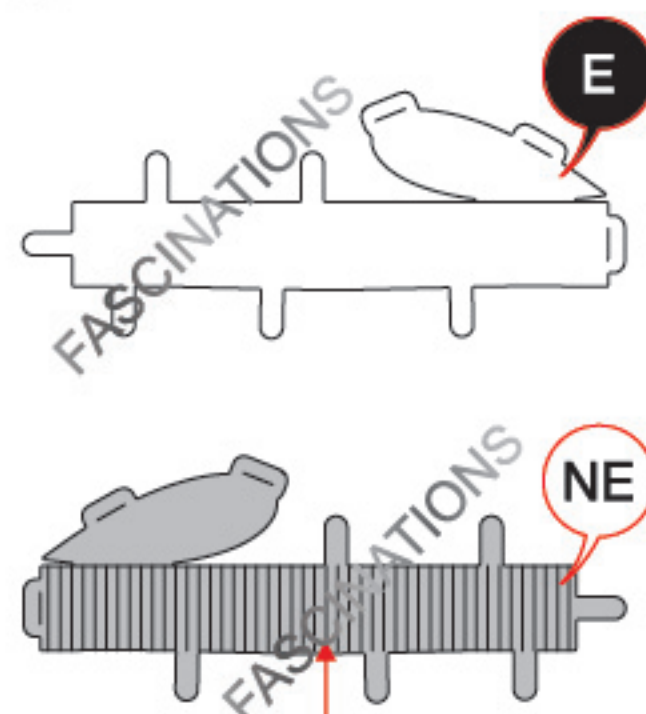
360°  
view



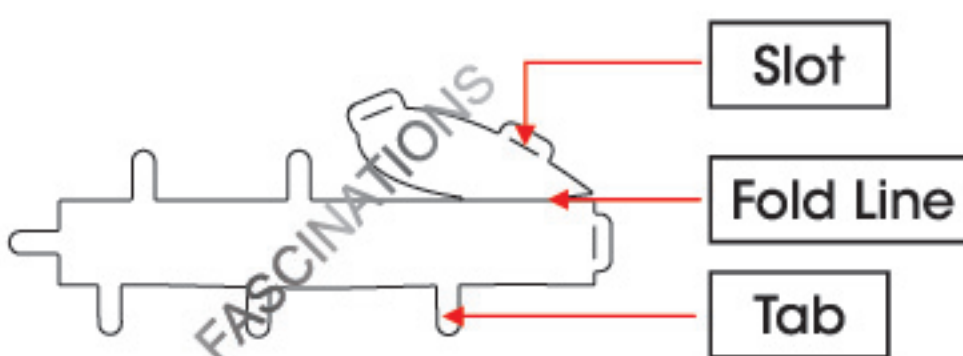
It is highly recommended that you visit  
[www.metalearth.com/360/ME1030](http://www.metalearth.com/360/ME1030)  
to see the completed model before assembling your own

## TO CREATE THE BEST CONNECTIONS

A - 48



Consider these engraved stripes as supporting features for the bend



### Legends:

- E** Engraved/ Color side
- NE** Non - engraved/ Silver side
- Attention point
- Insert tab and bend 90 degrees
- Insert tab and twist 90 degrees

### Assembly tip:

If needed, slightly twist tabs to hold parts together then untwist and bend them down for a nice finish.

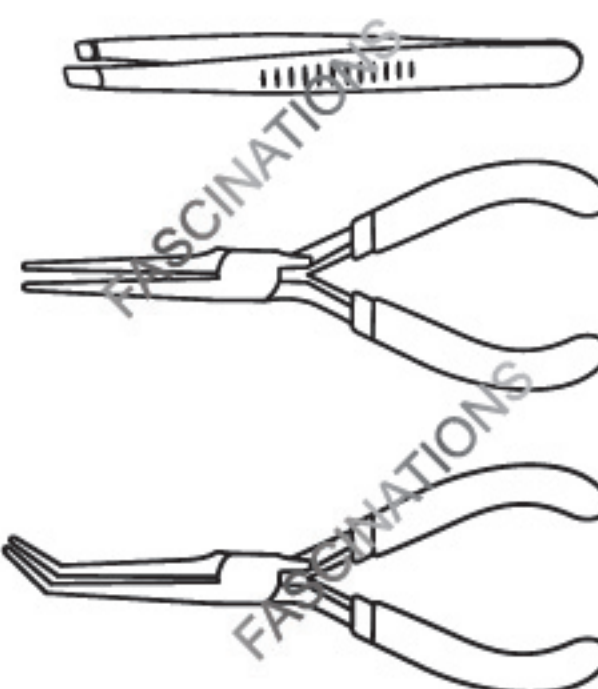
- Yellow areas should be curled
- Red areas should be folded

### Recommended tools:

- Wire cutters: helpful for taking parts from the metal sheets.

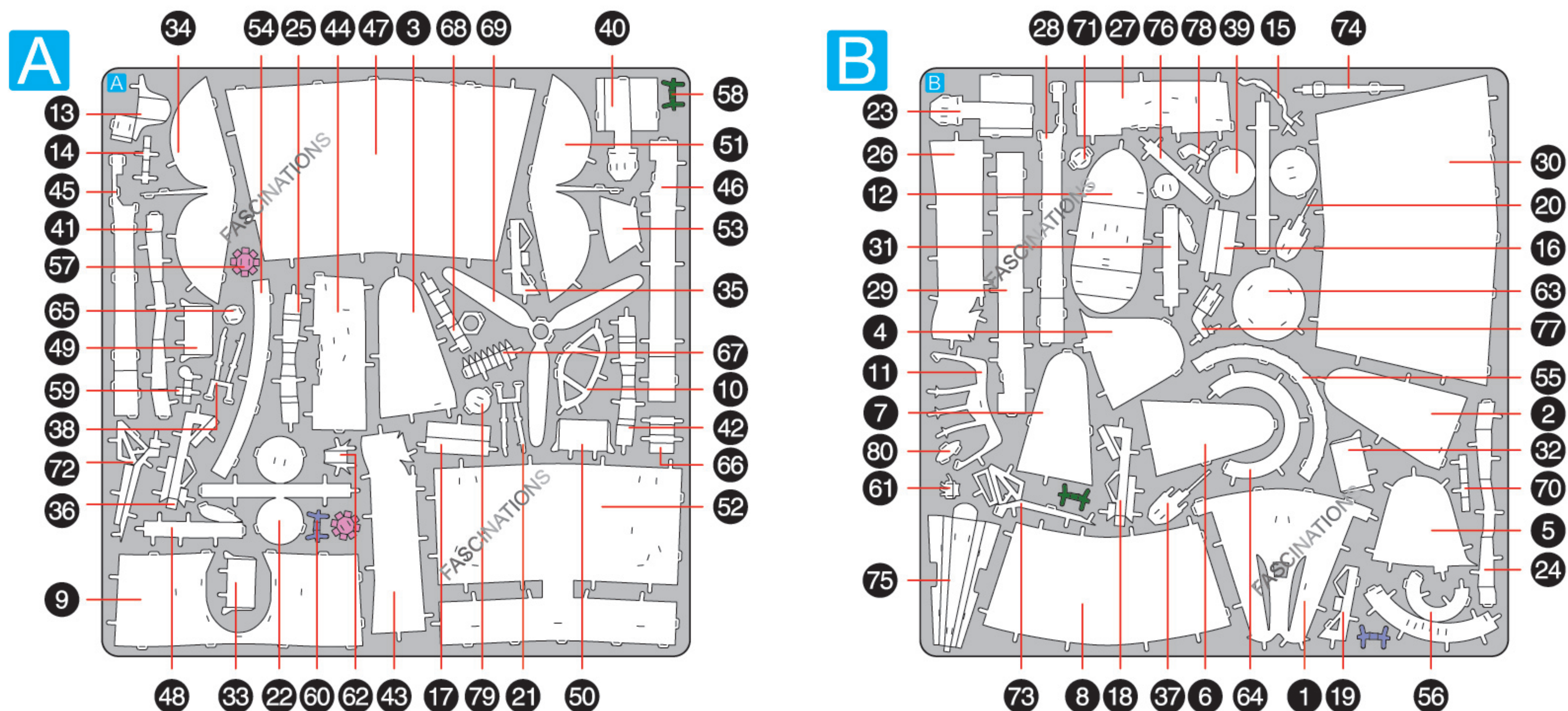


- Tweezers or needle nose pliers: helpful for folding parts, bending and twisting tabs.



## METAL SHEETS

Parts with same color are duplicates



In order to avoid possible injury from sharp edges, please carefully discard the metal sheets after parts have been removed.

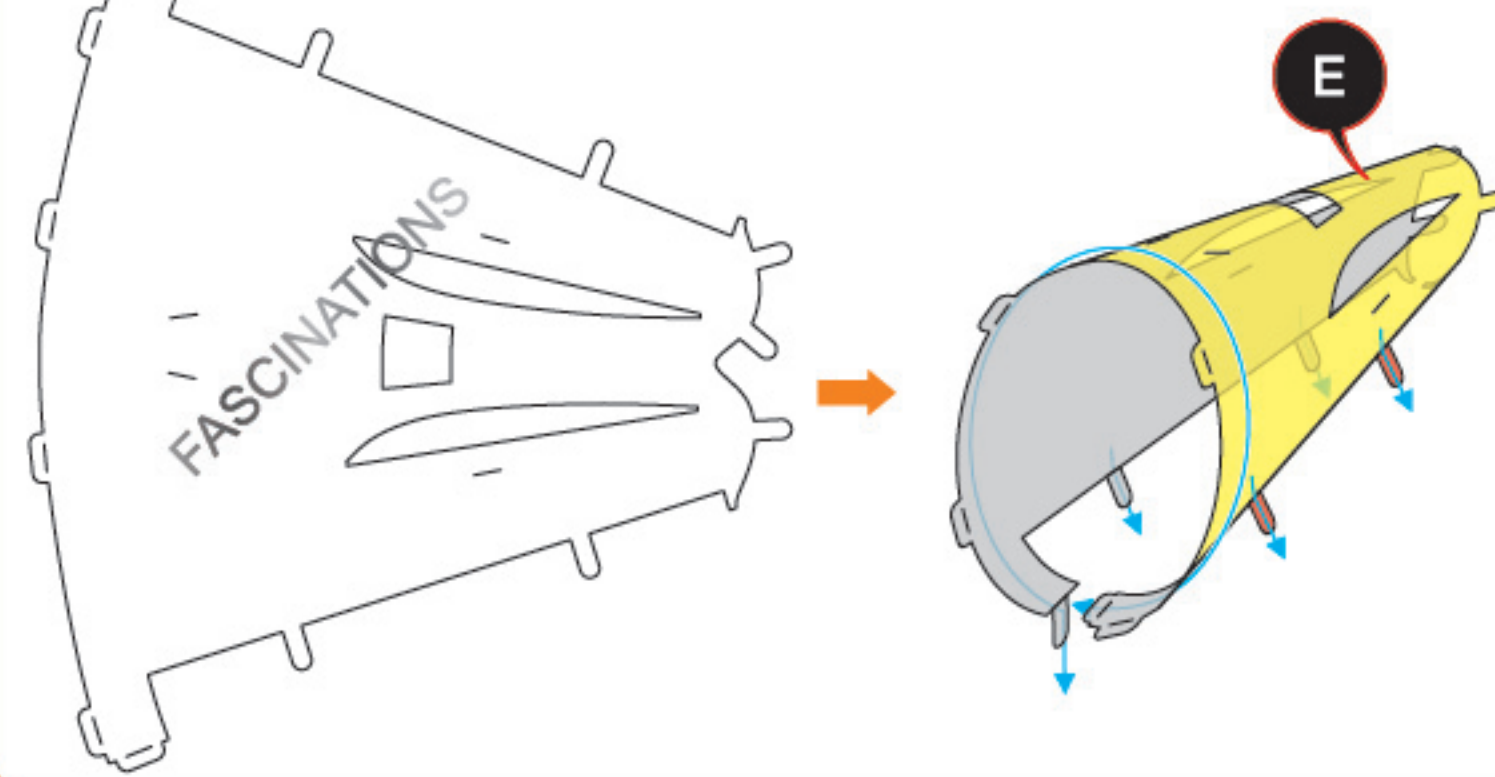


Go to [www.metalearth.com/360/ME1030](http://www.metalearth.com/360/ME1030) to see the zoomable PDF version of this instruction sheet

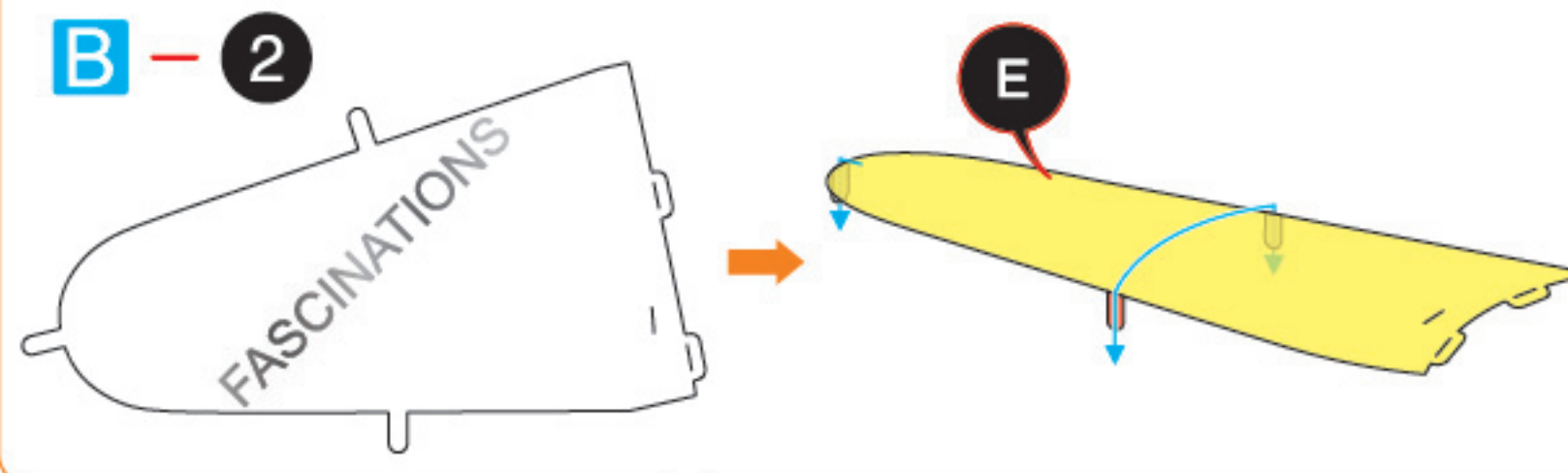
## ASSEMBLY FLOW CHART

### Step 1

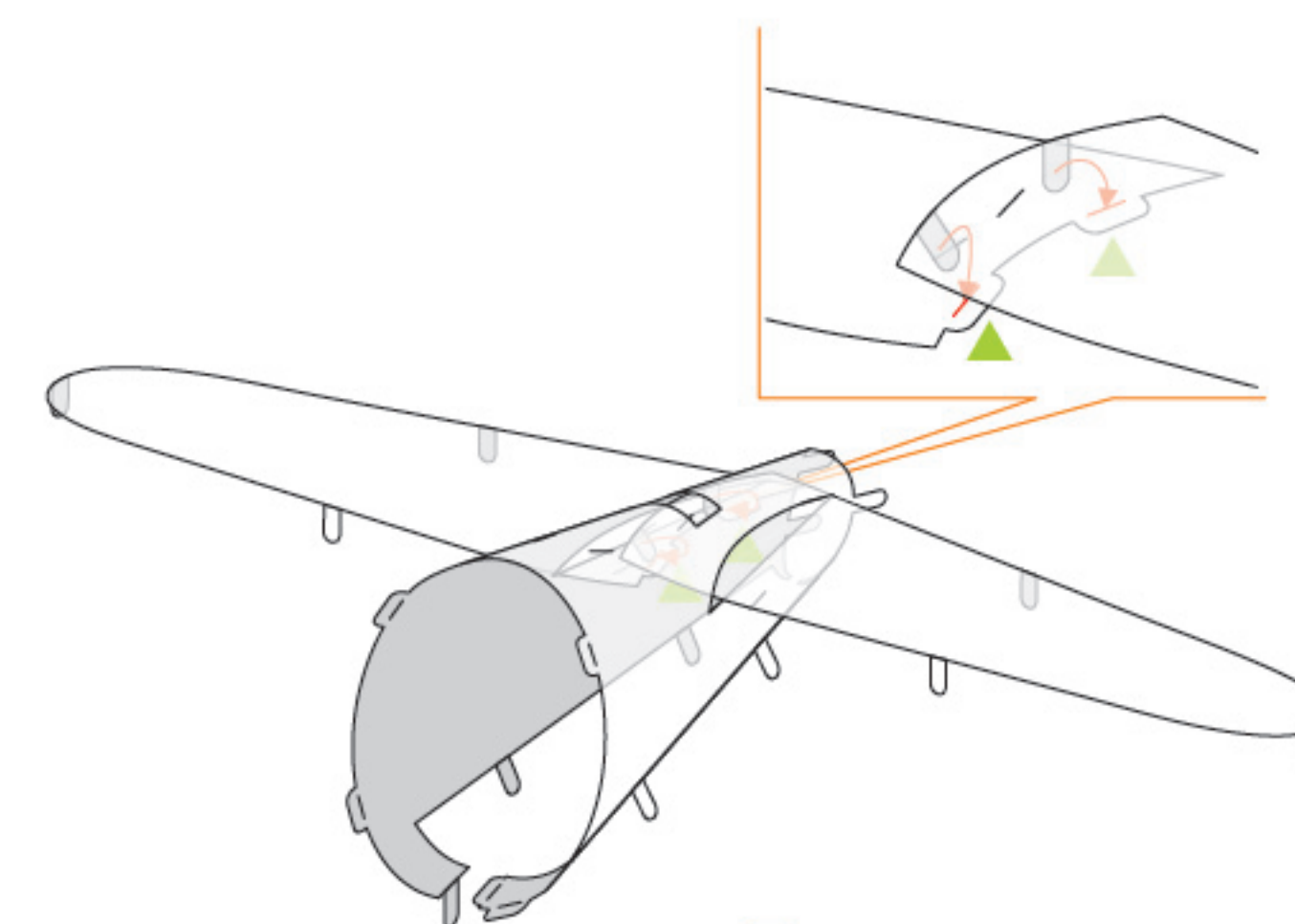
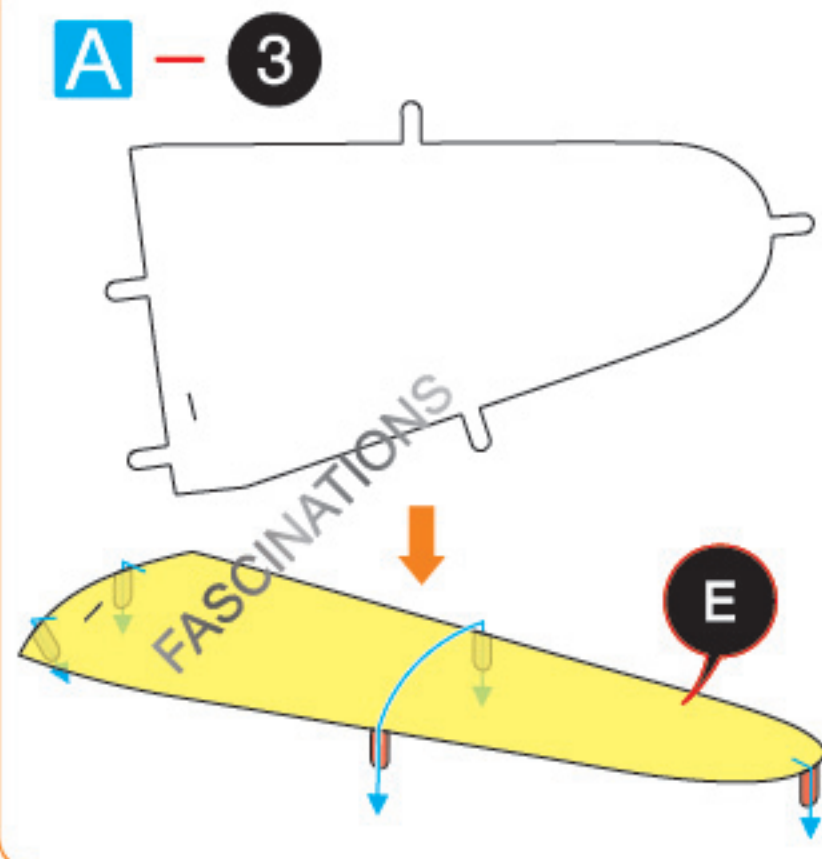
B - 1



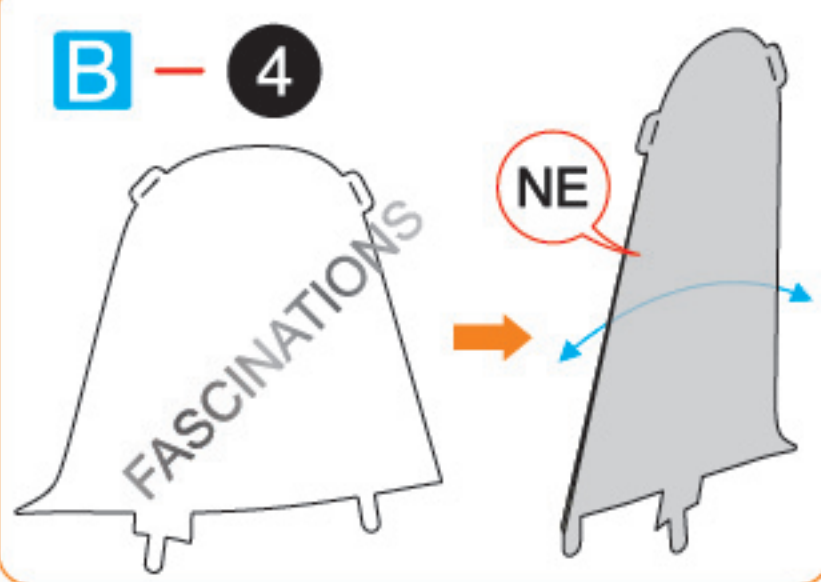
B - 2



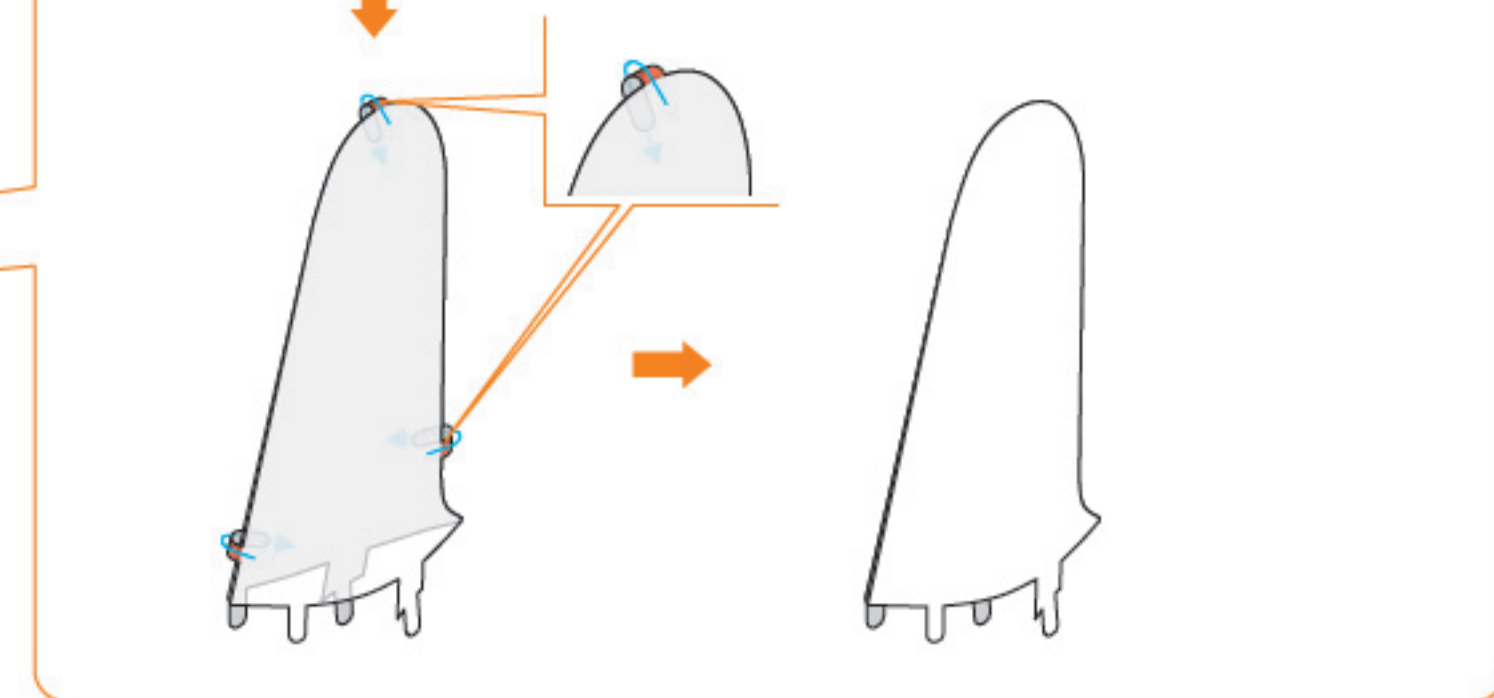
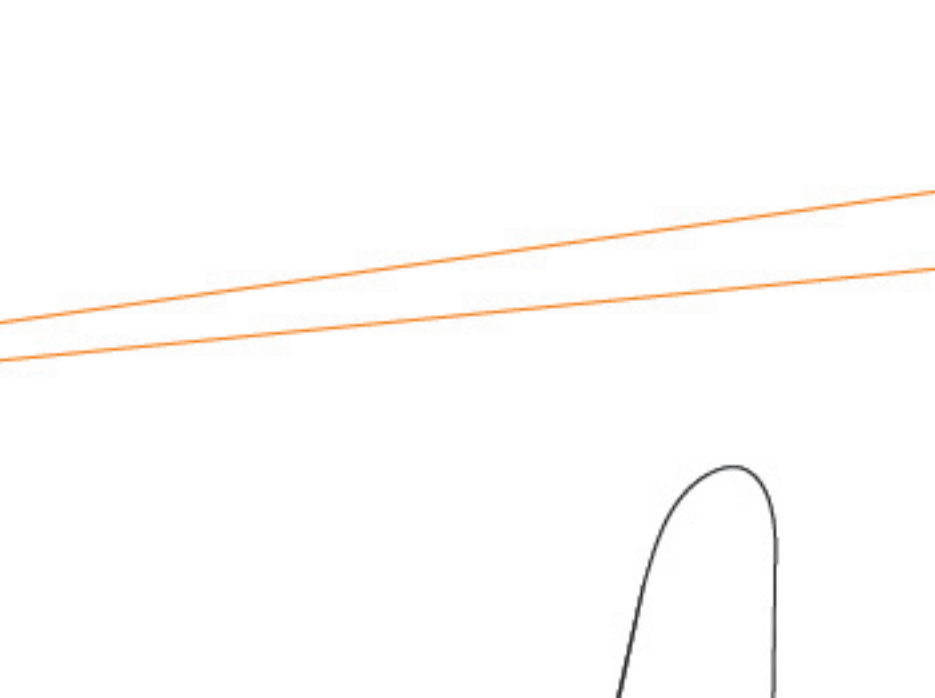
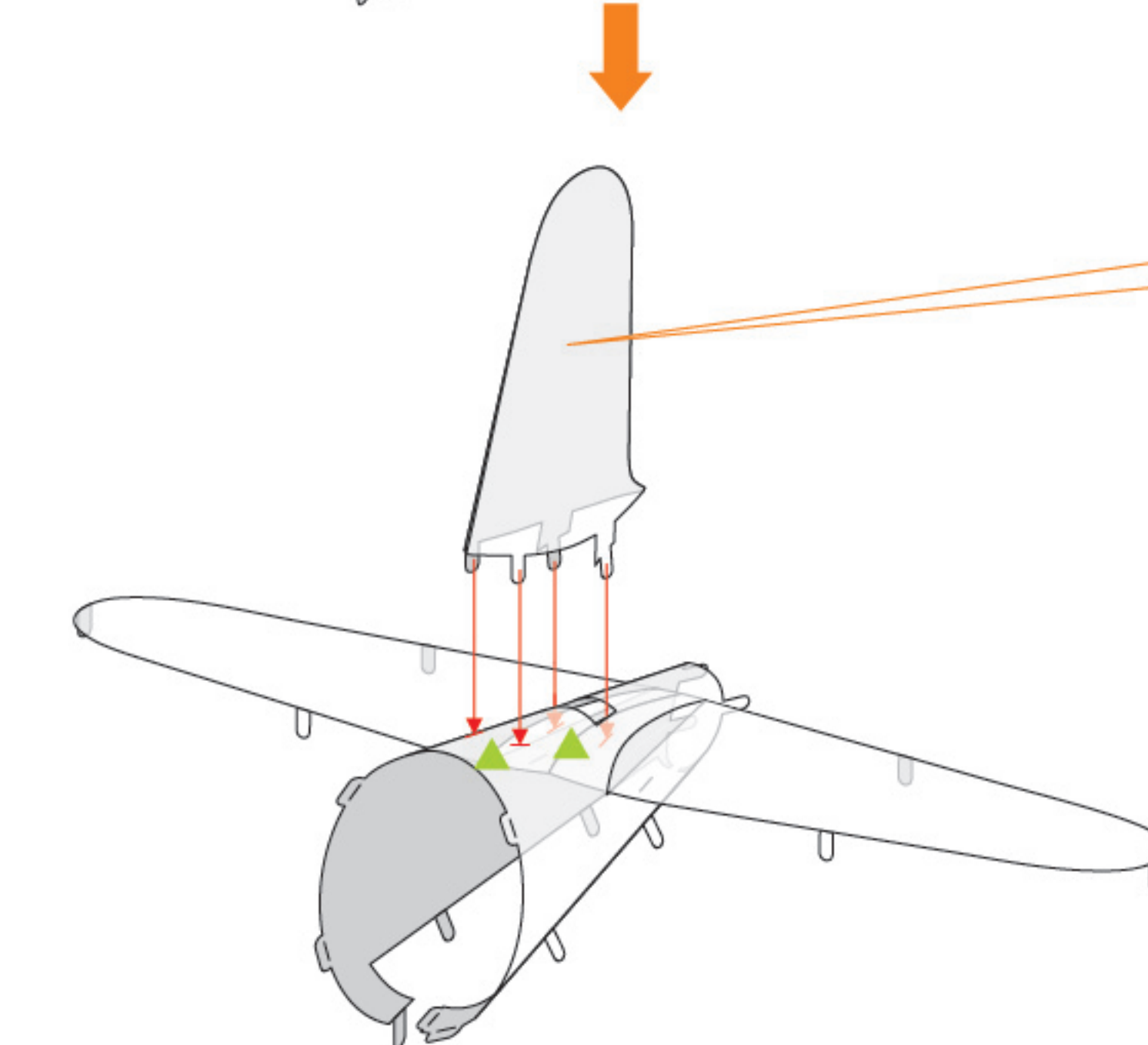
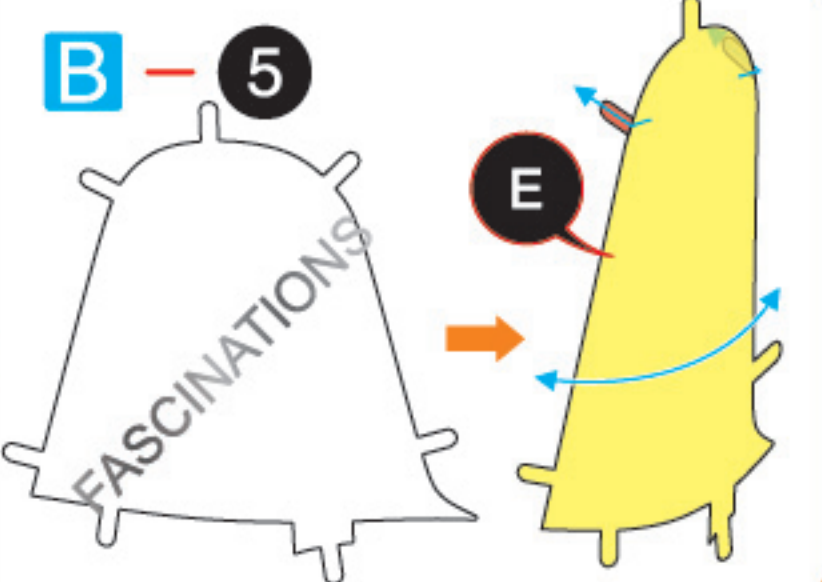
A - 3



B - 4



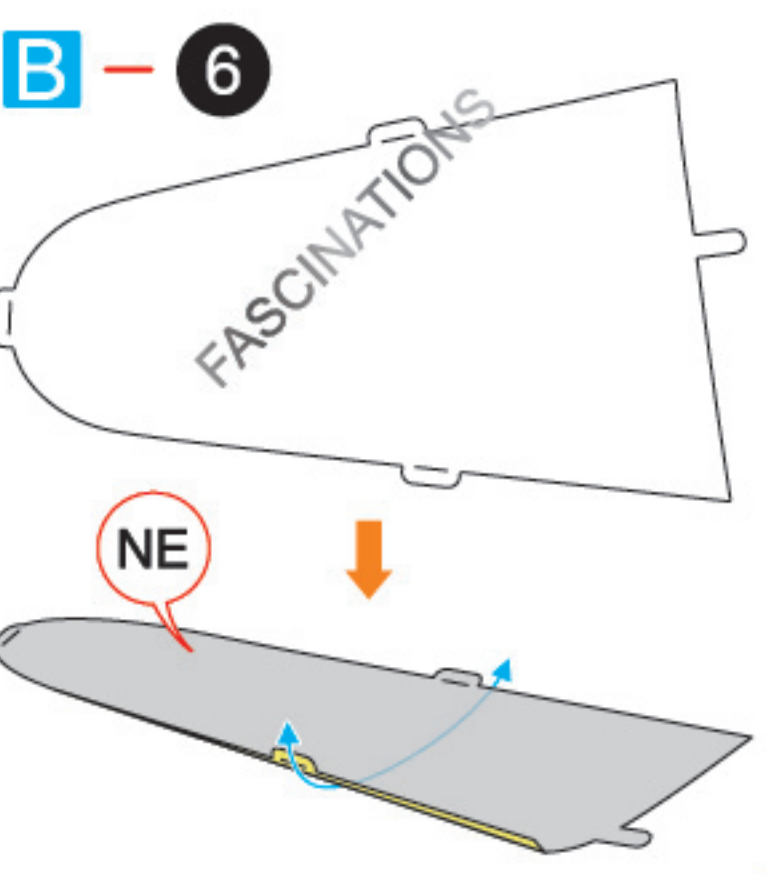
B - 5



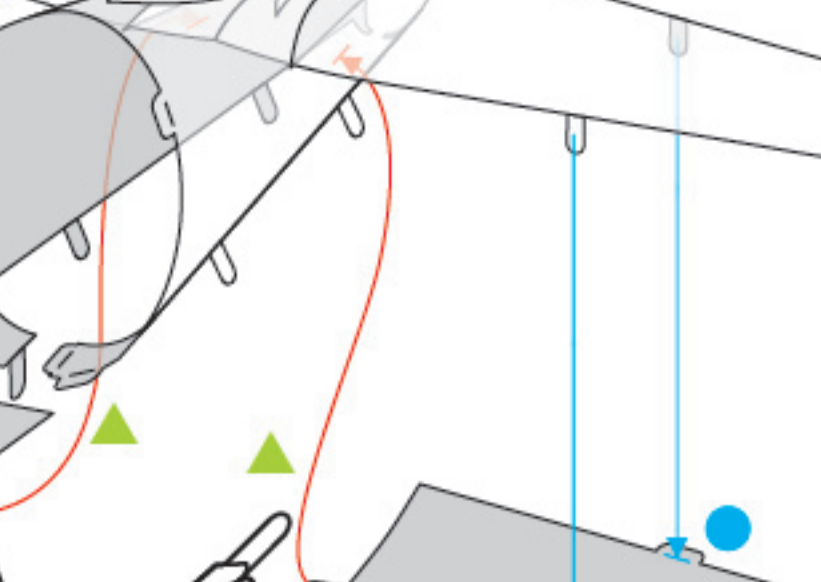
### Step 2

Step 1

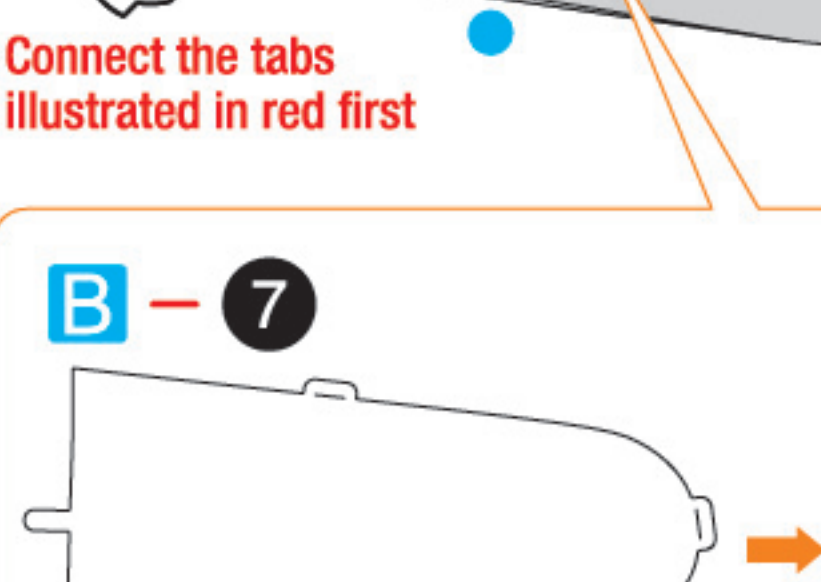
B - 6



B - 7

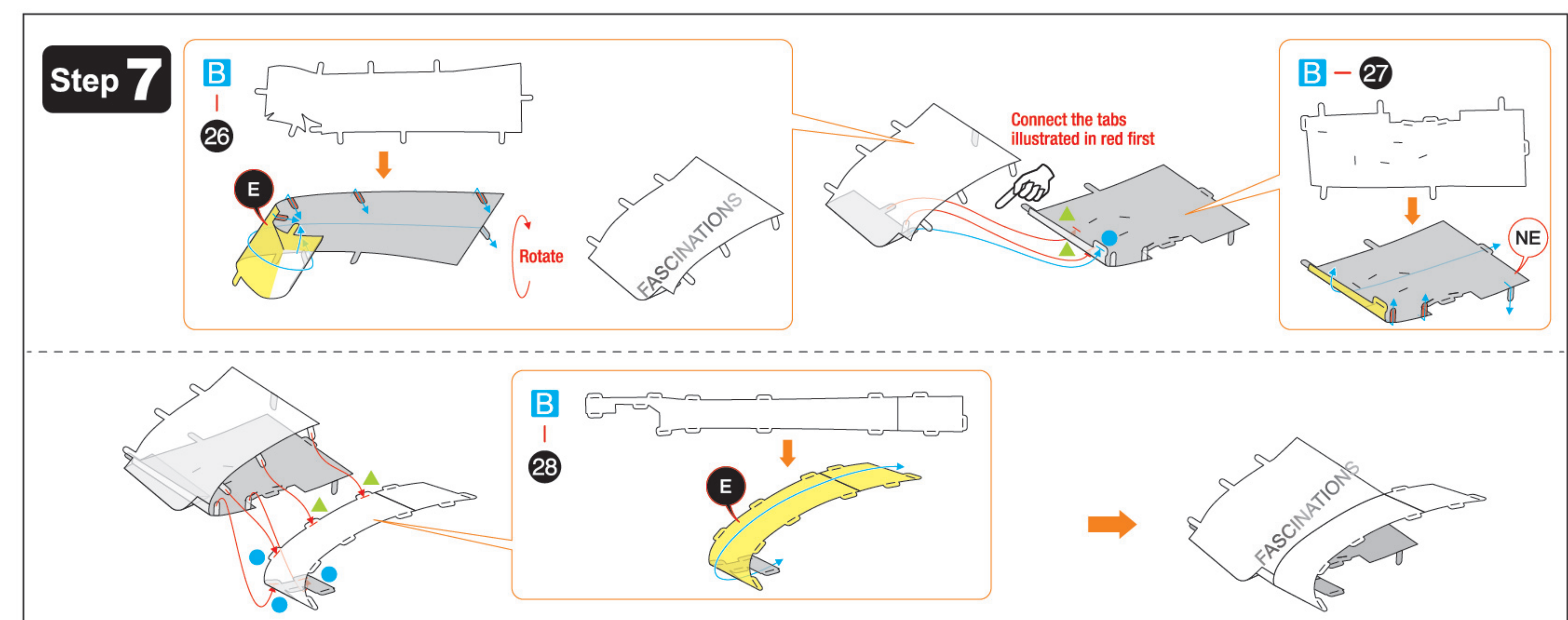
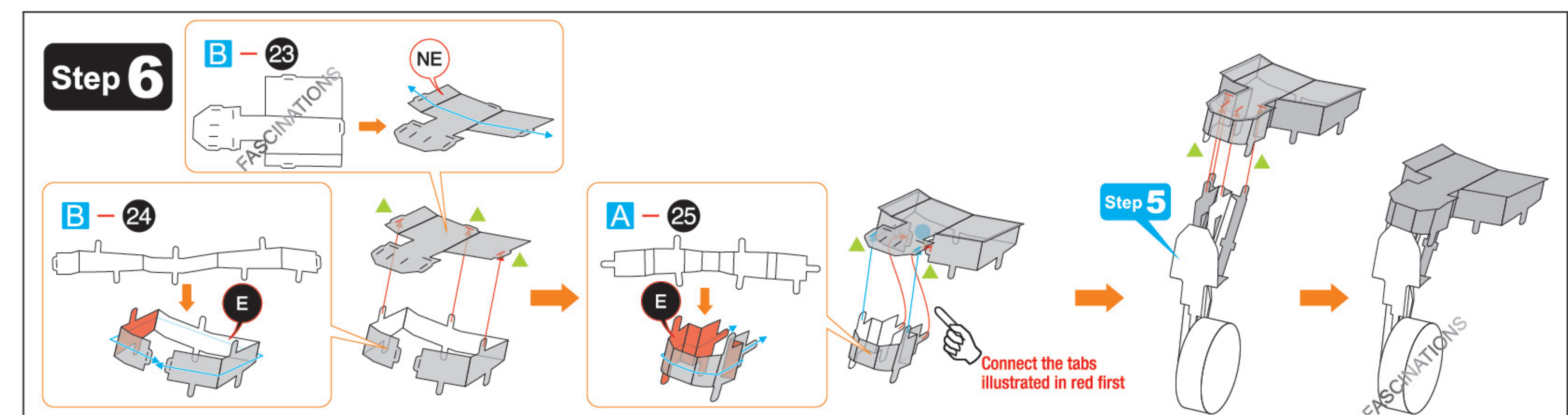
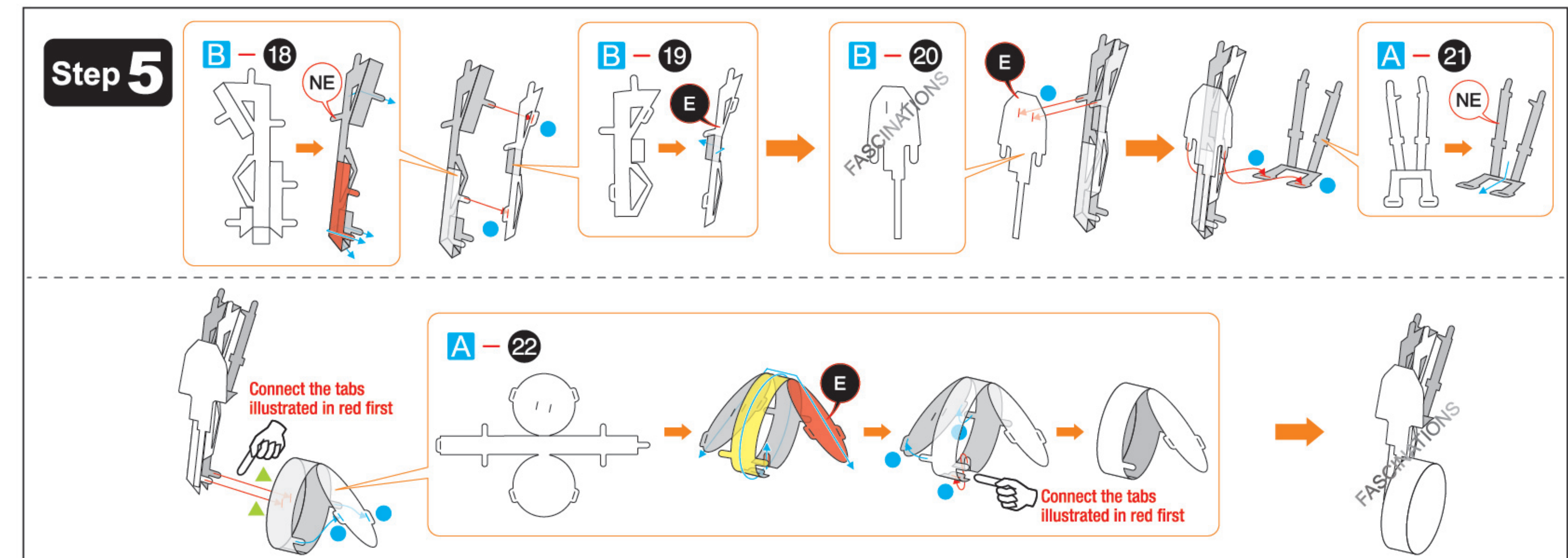
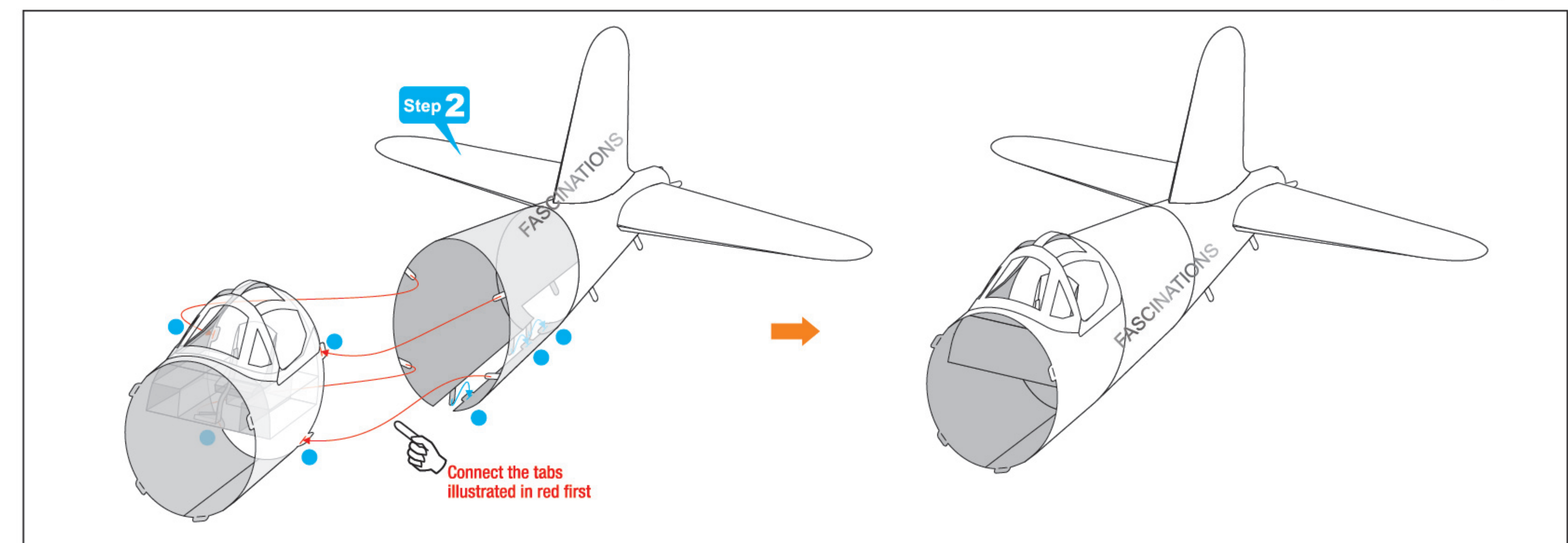
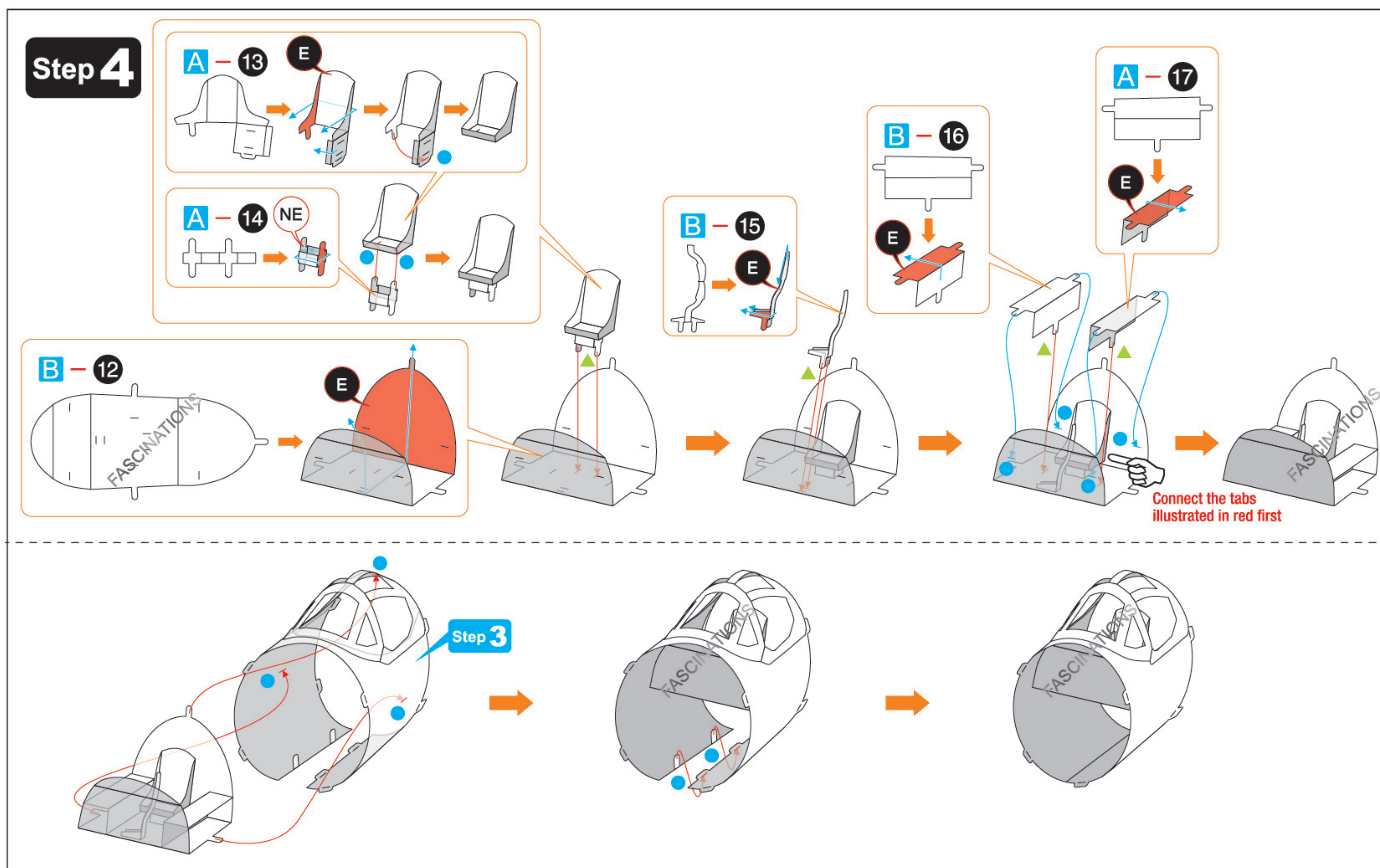
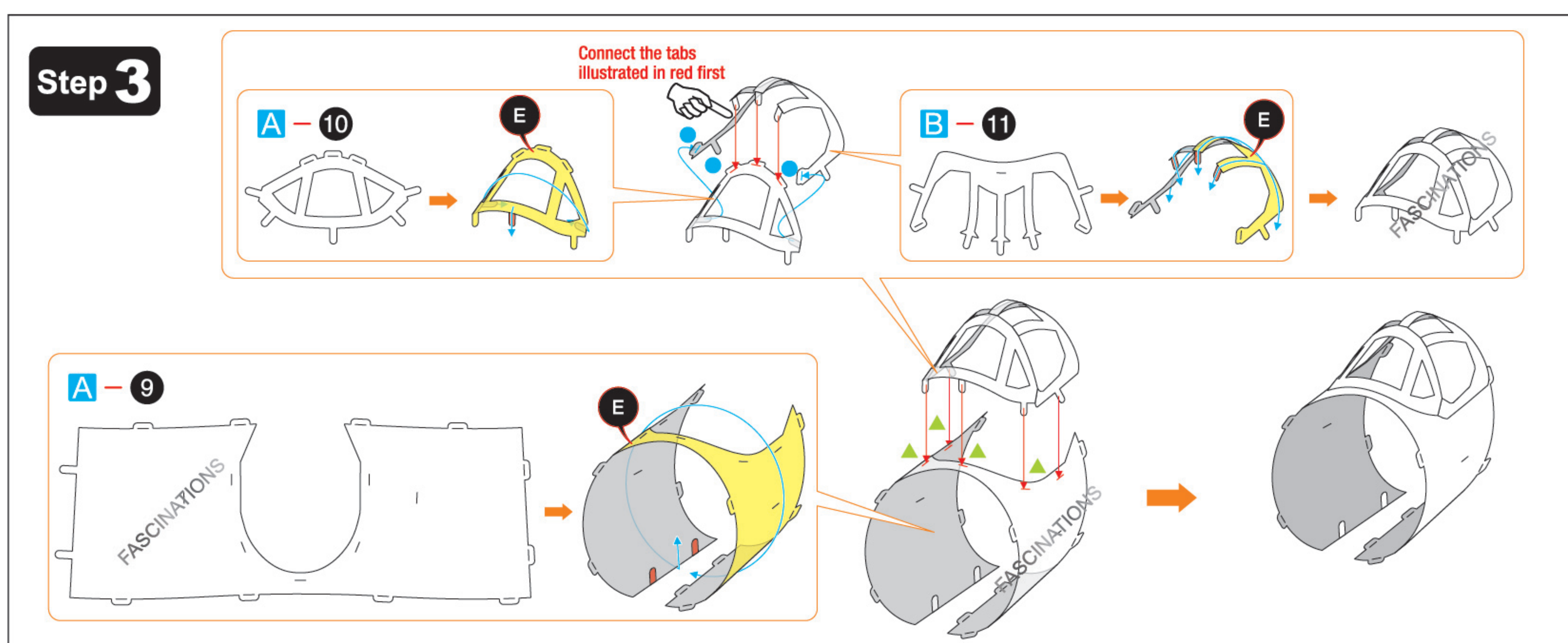
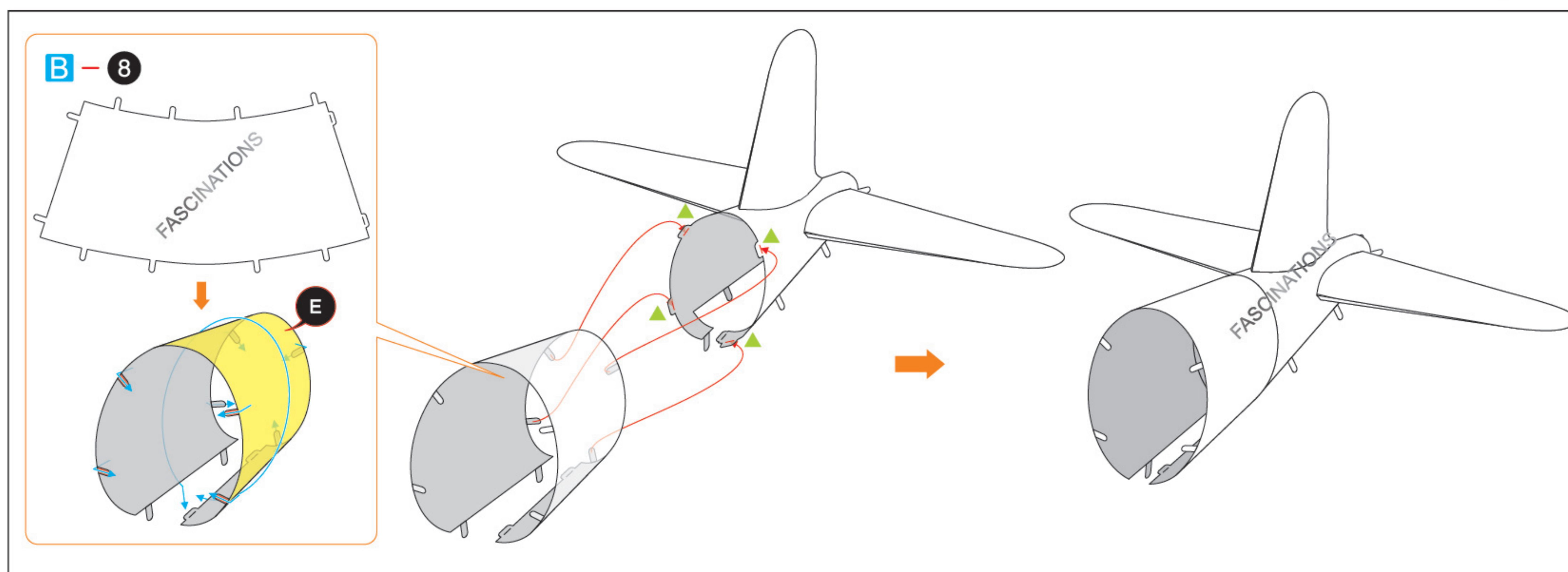


B - 7

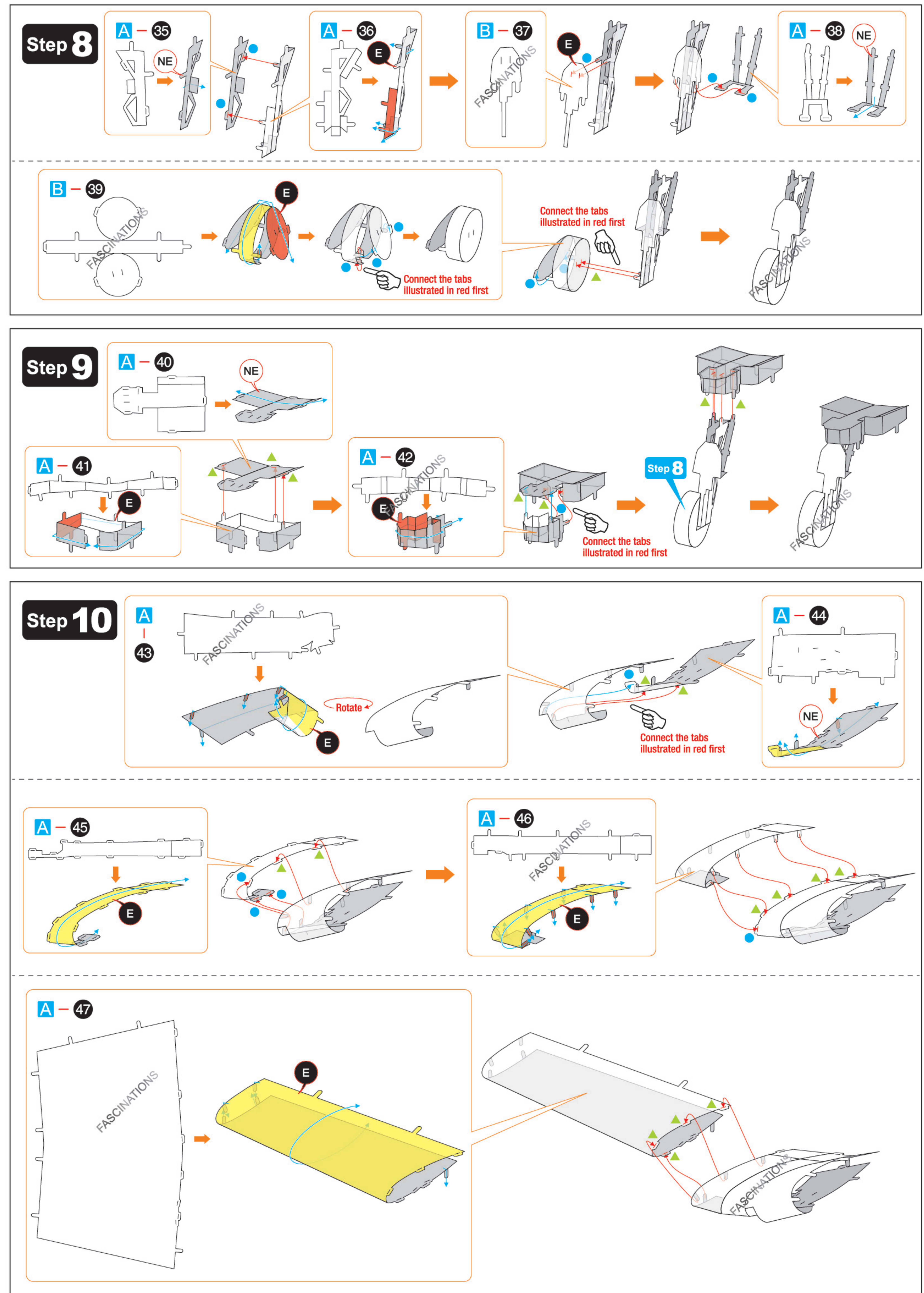
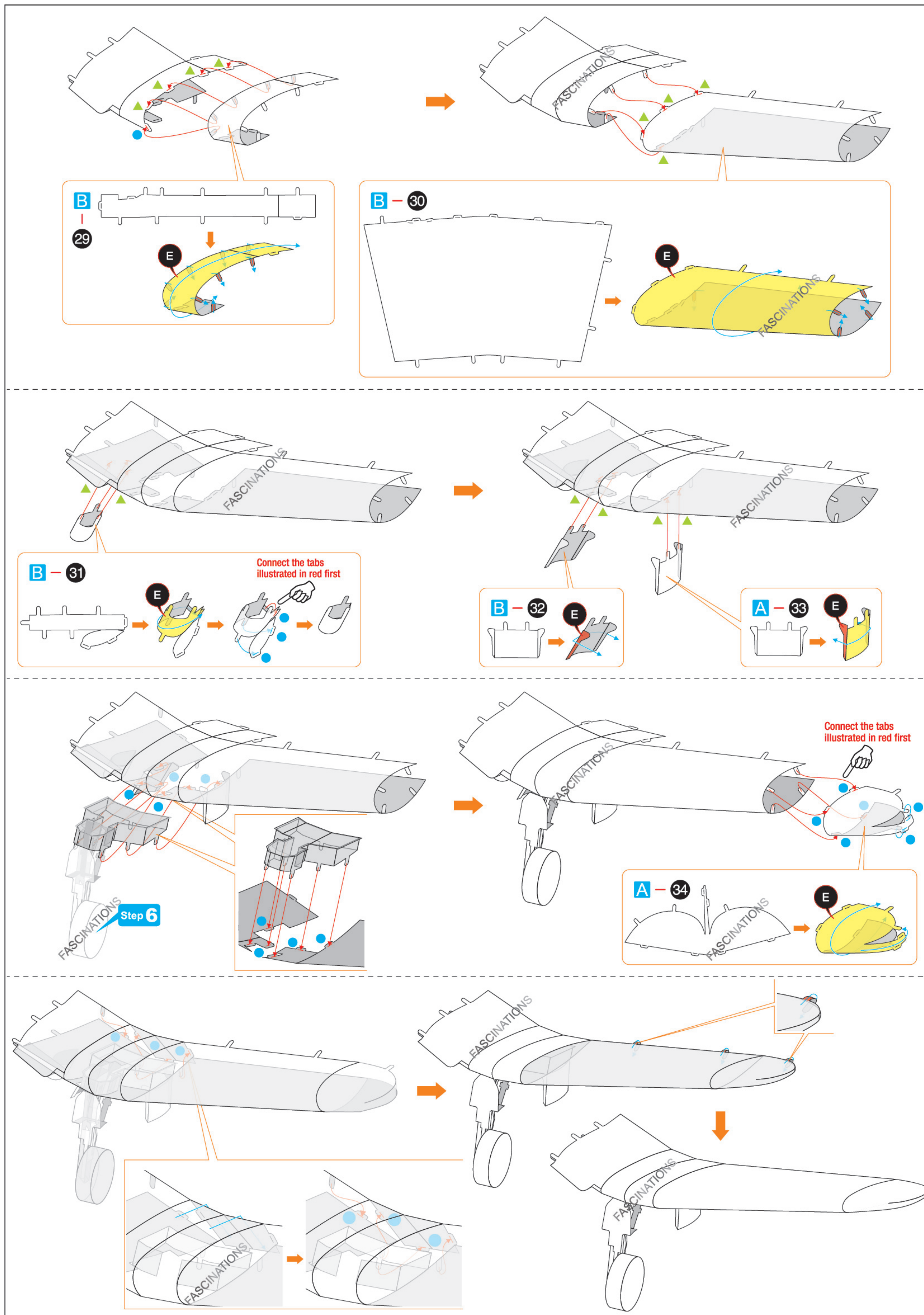


Connect the tabs illustrated in red first

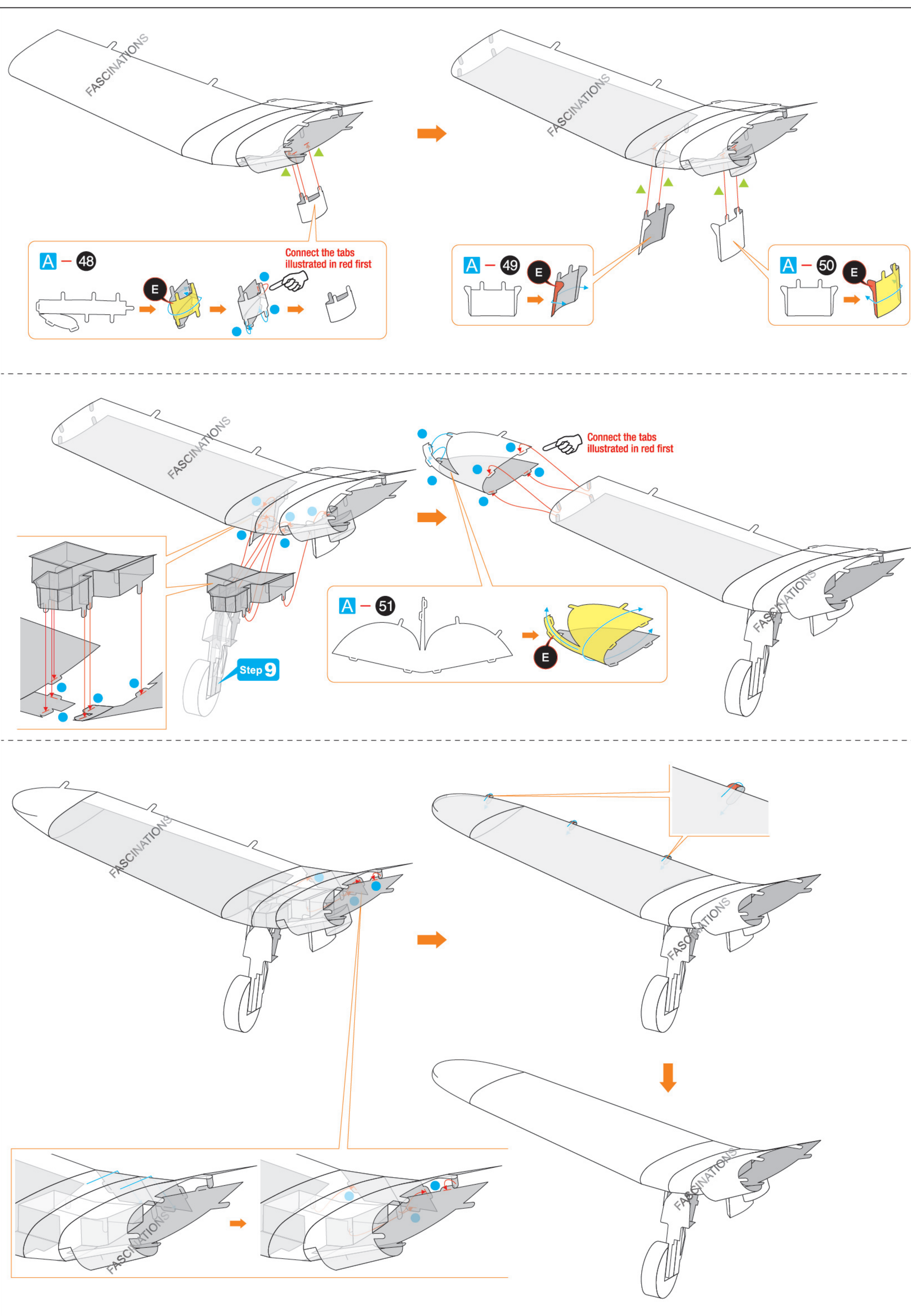




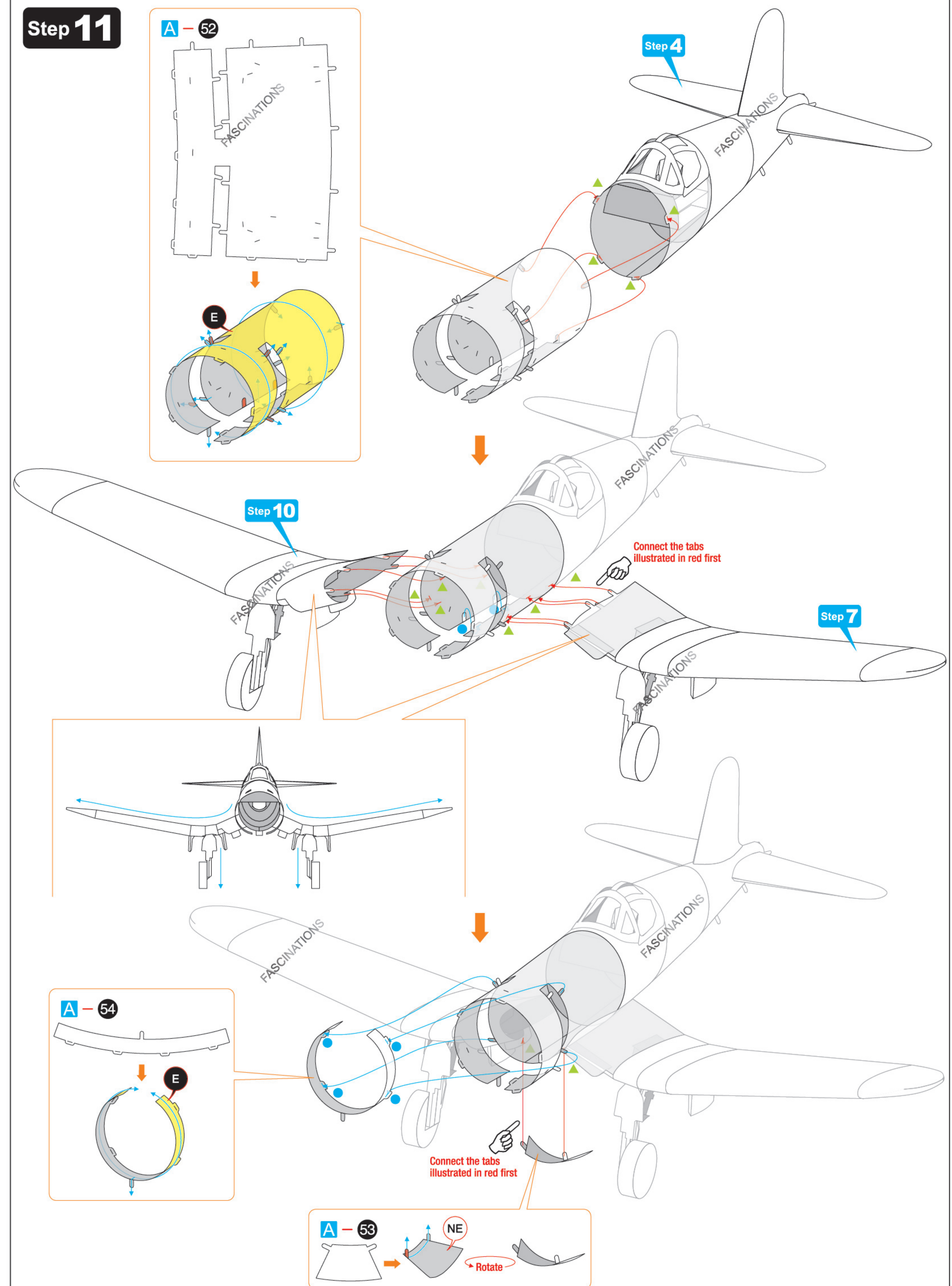




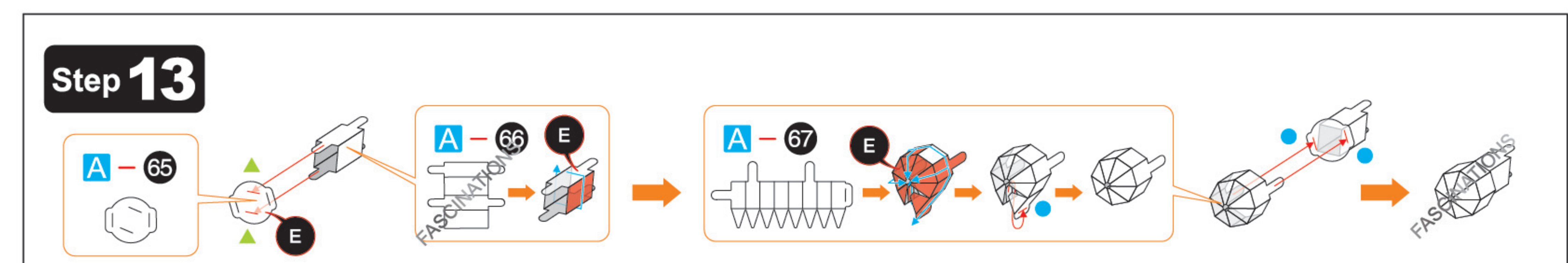
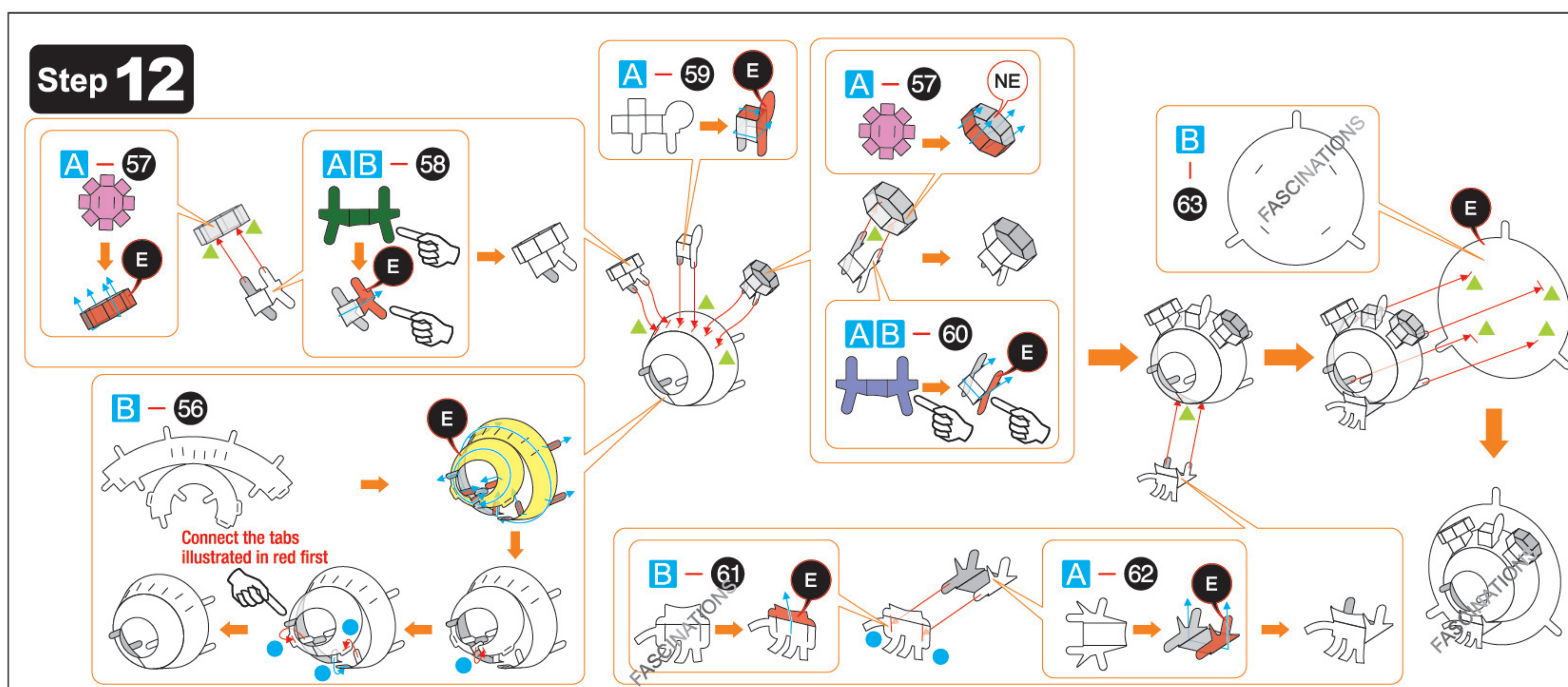
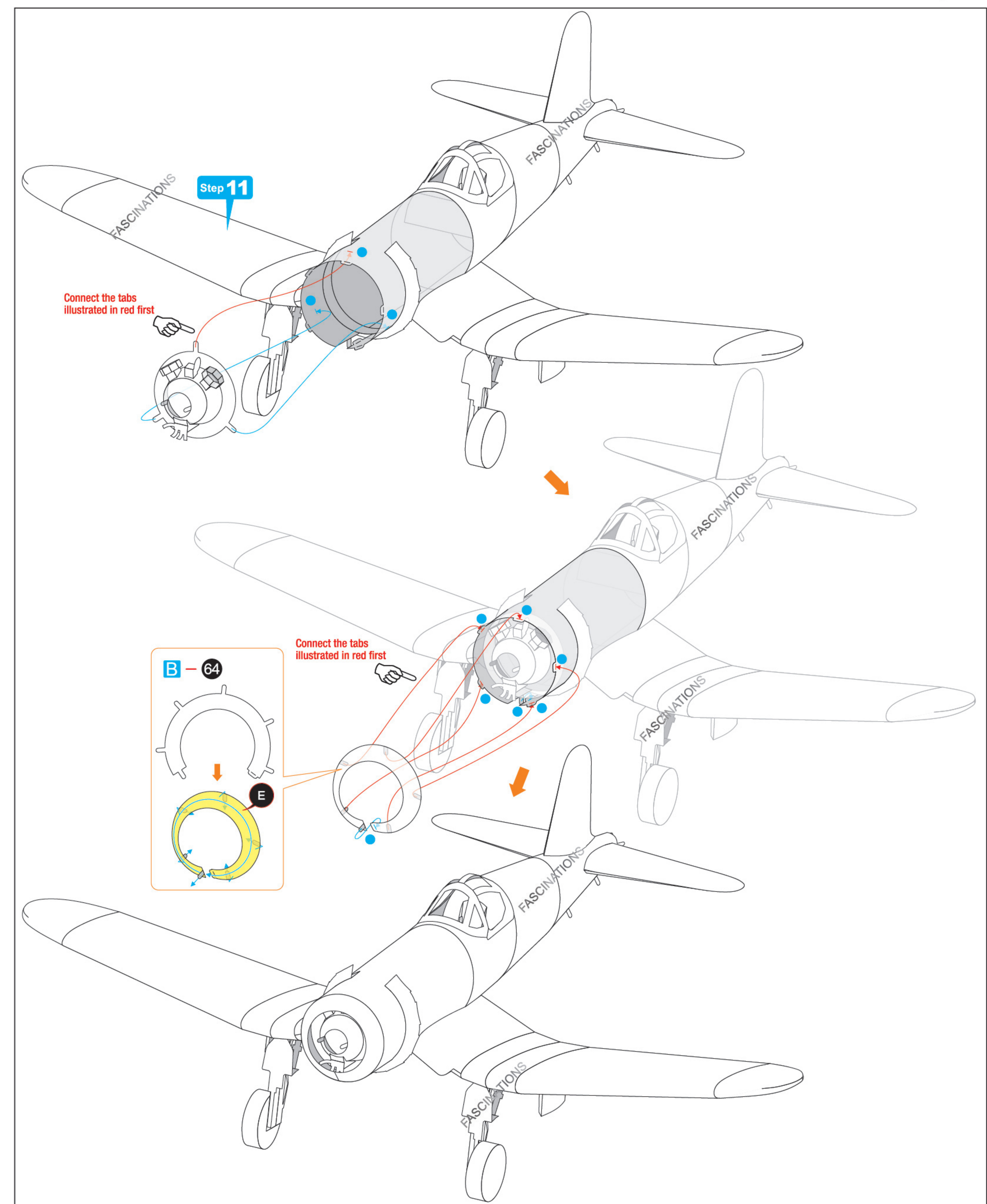
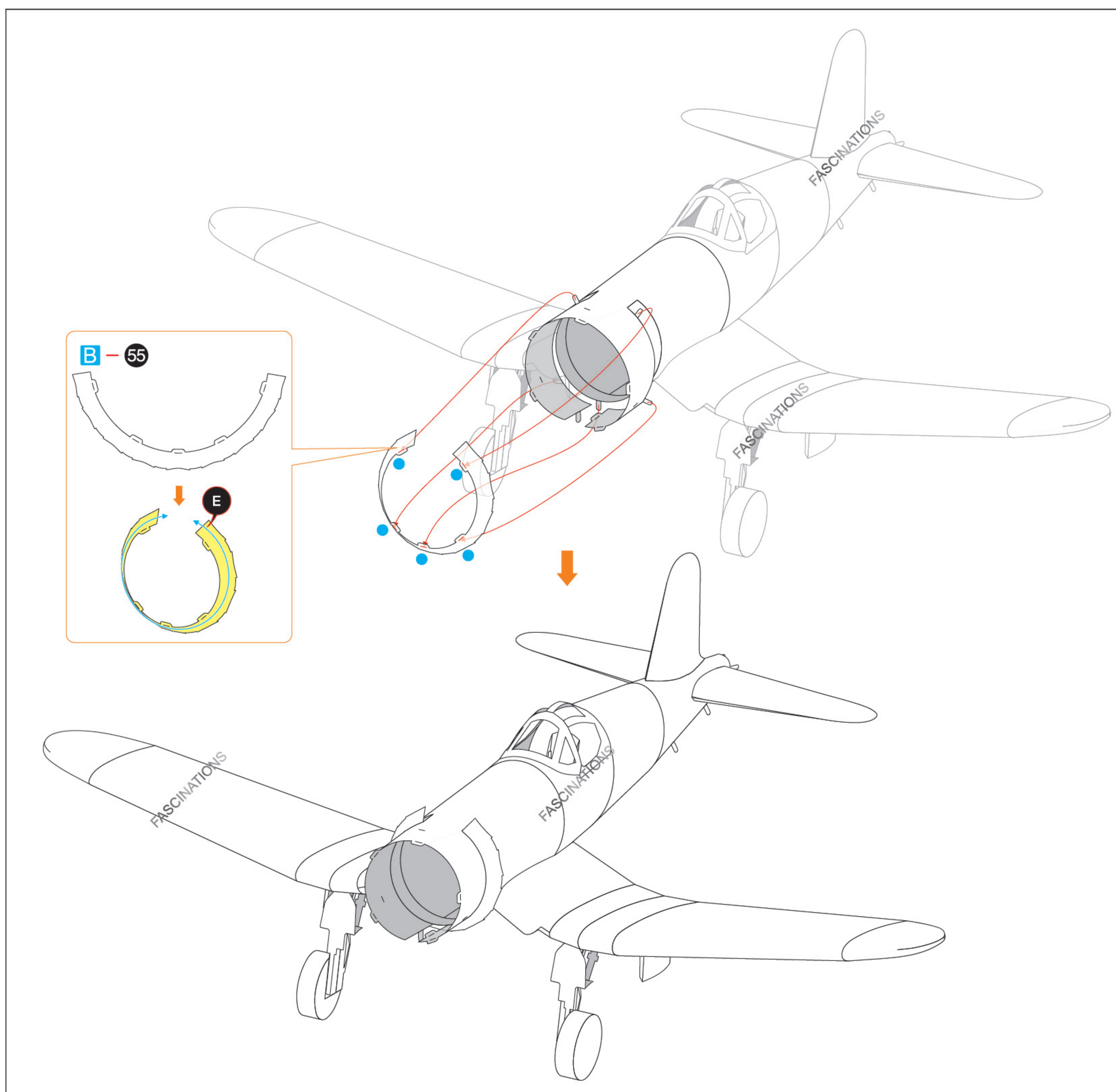




## Step 11

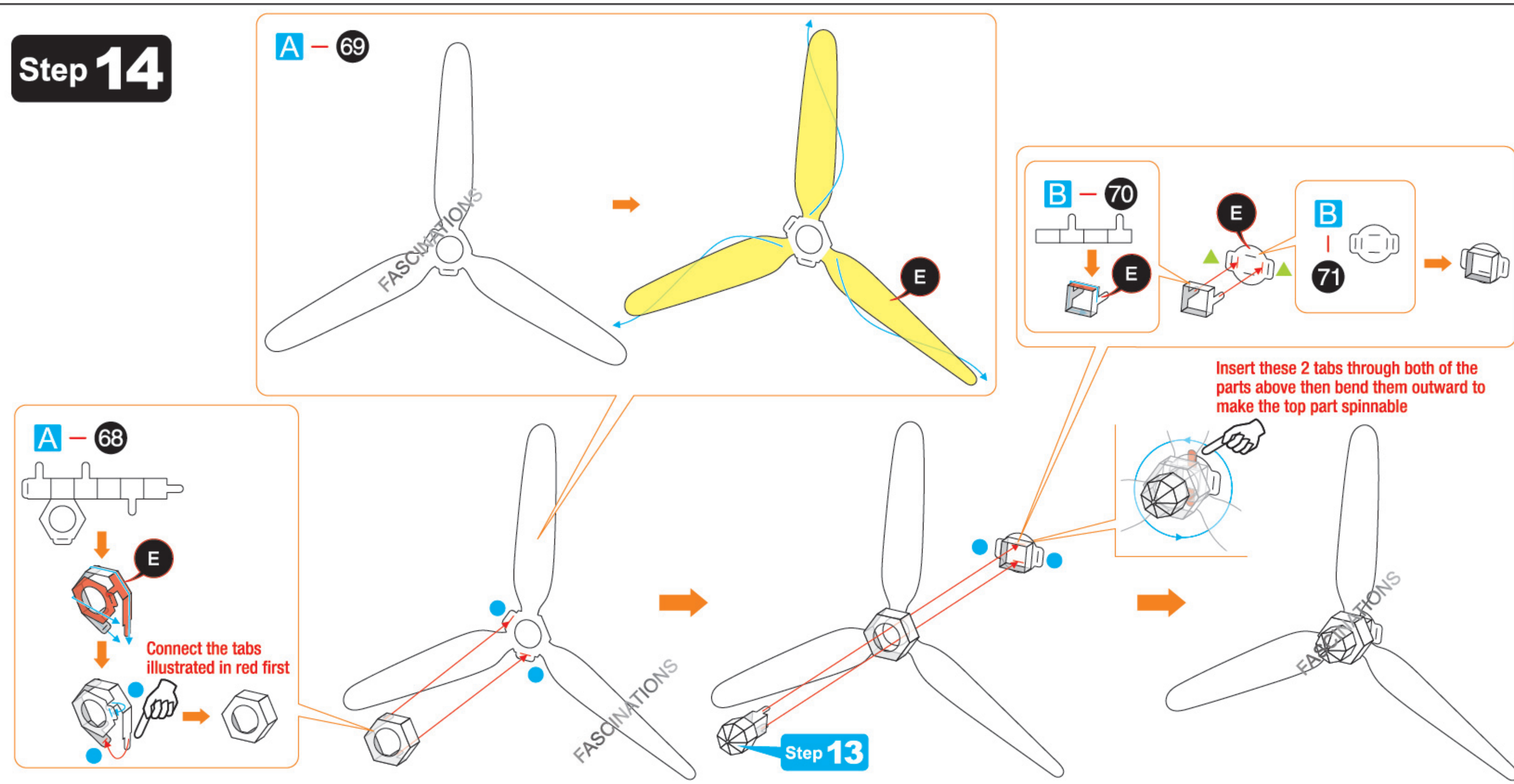








## Step 14



## Step 15

