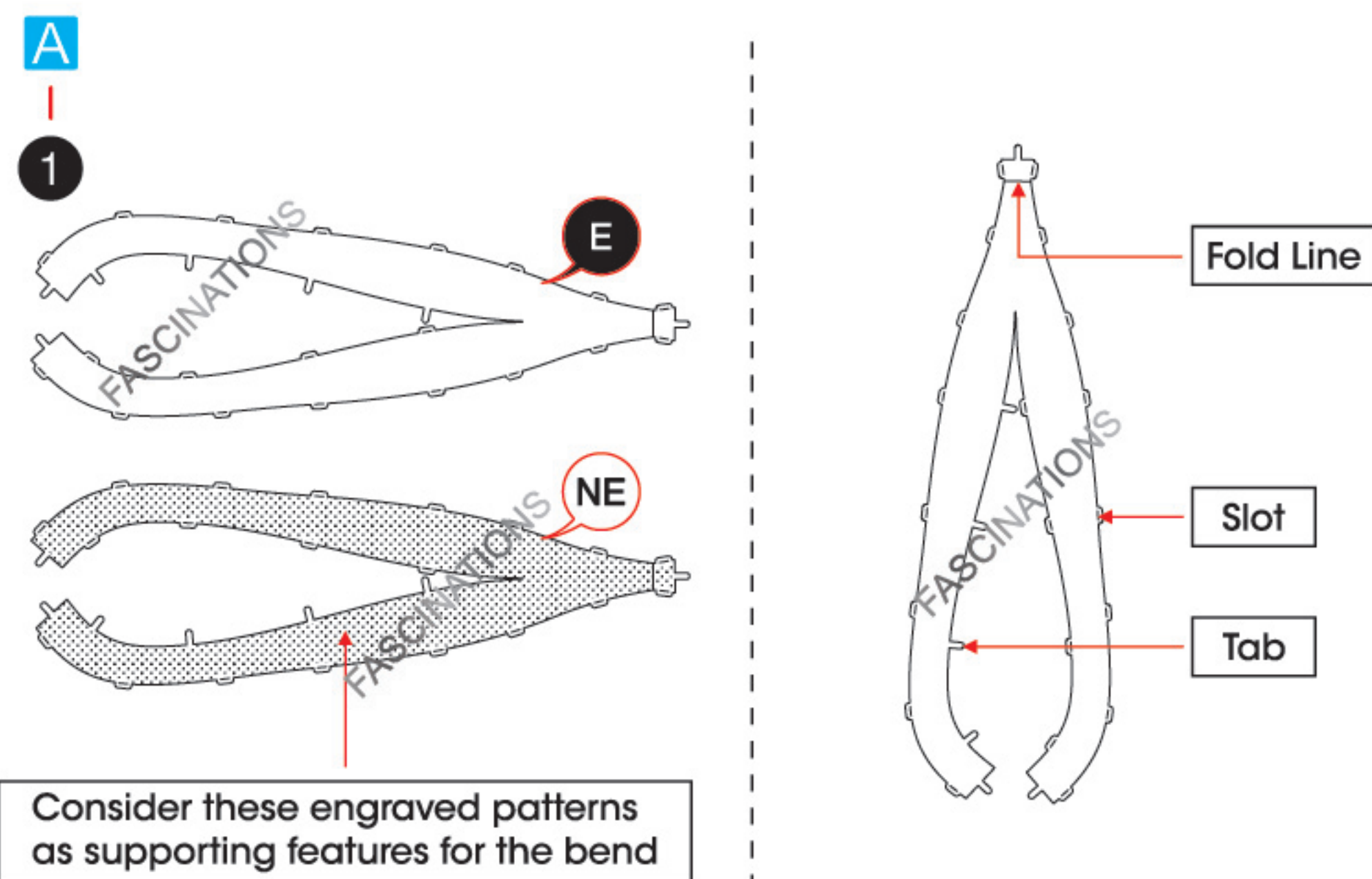


**COBRA**  
ME1032



It is highly recommended that you visit  
[www.metalearth.com/360/ME1032](http://www.metalearth.com/360/ME1032)  
to see the completed model before assembling your own

## TO CREATE THE BEST CONNECTIONS



### Legends:

- E** Engraved/ Color side
- NE** Non - engraved/ Silver side
- Attention point
- Insert tab and bend 90 degrees
- Insert tab and twist 90 degrees

### Assembly tip:

If needed, slightly twist tabs to hold parts together then untwist and bend them down for a nice finish.

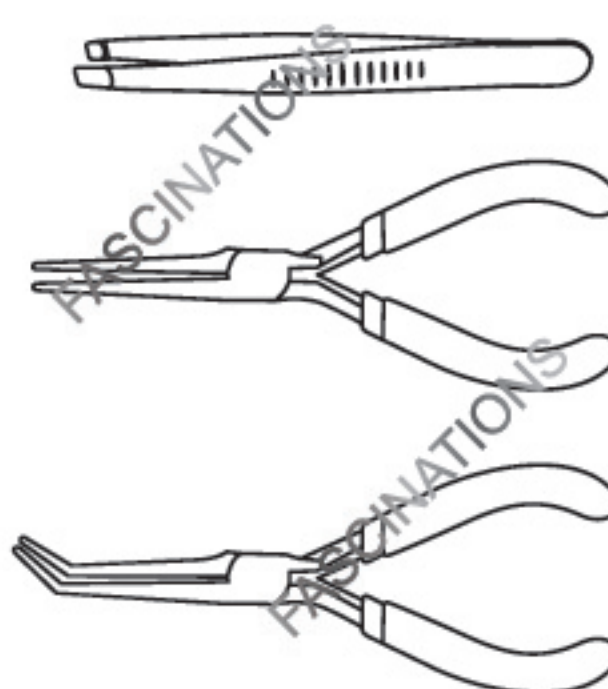
- Yellow areas should be curled
- Red areas should be folded

### Recommended tools:

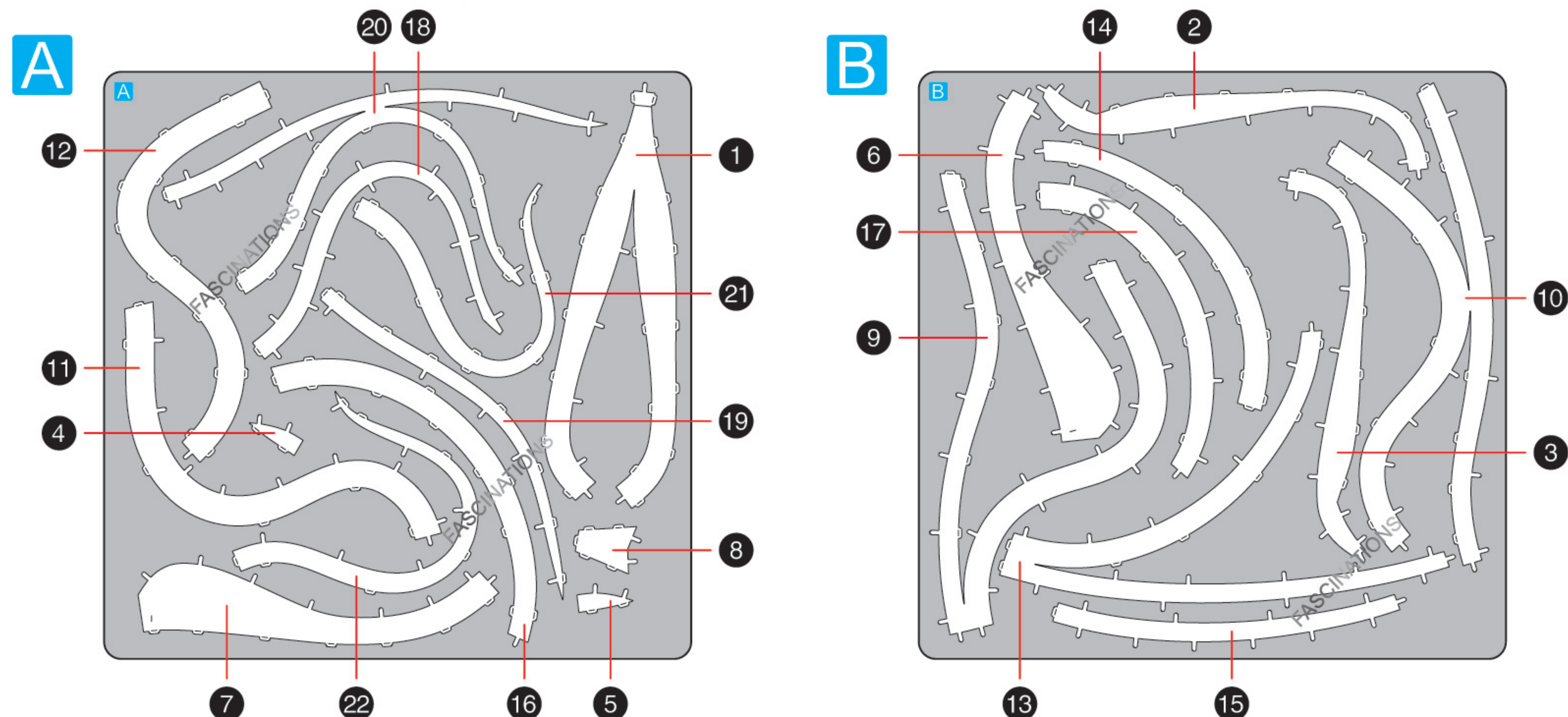
- Wire cutters: helpful for taking parts from the metal sheets.



- Tweezers or needle nose pliers: helpful for folding parts, bending and twisting tabs.



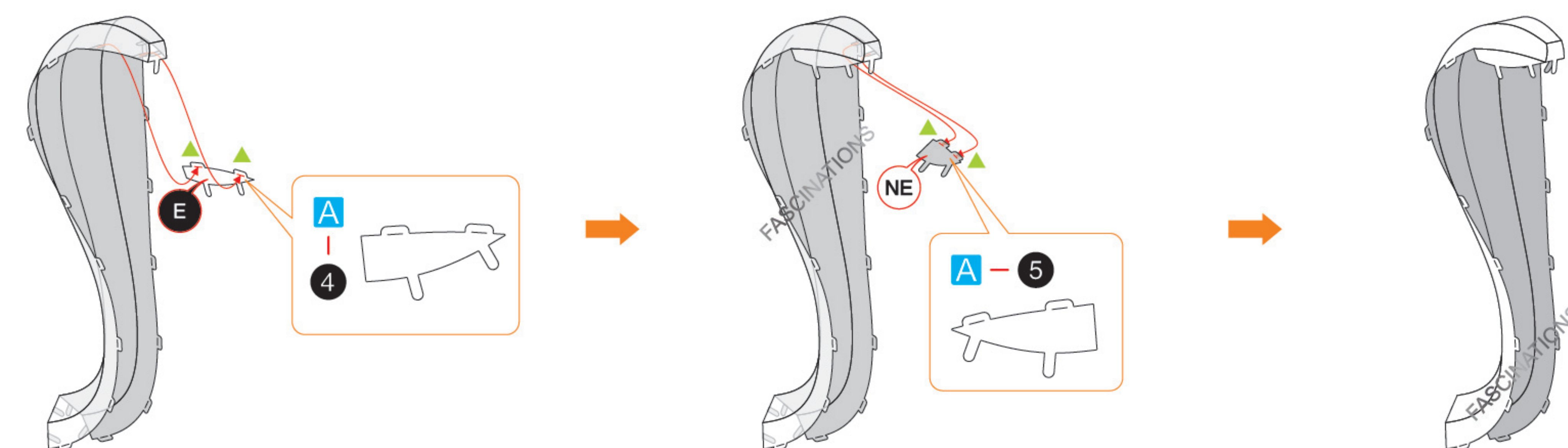
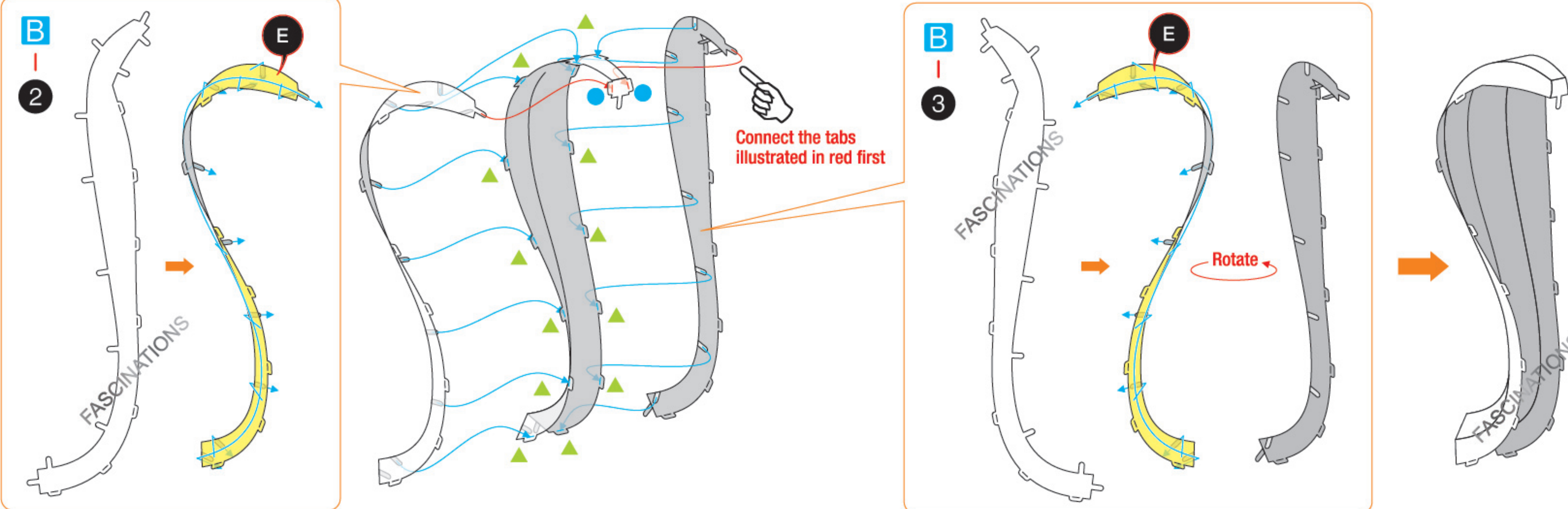
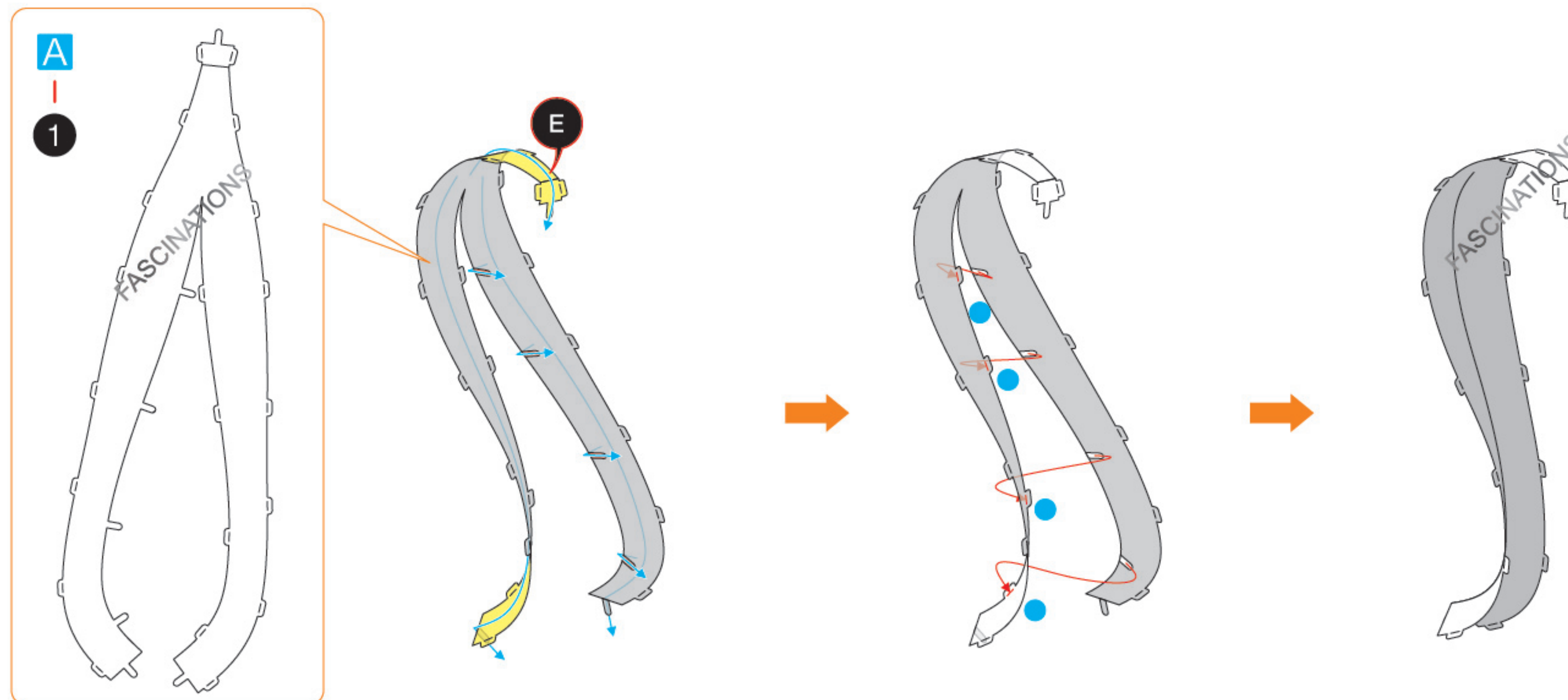
## METAL SHEETS



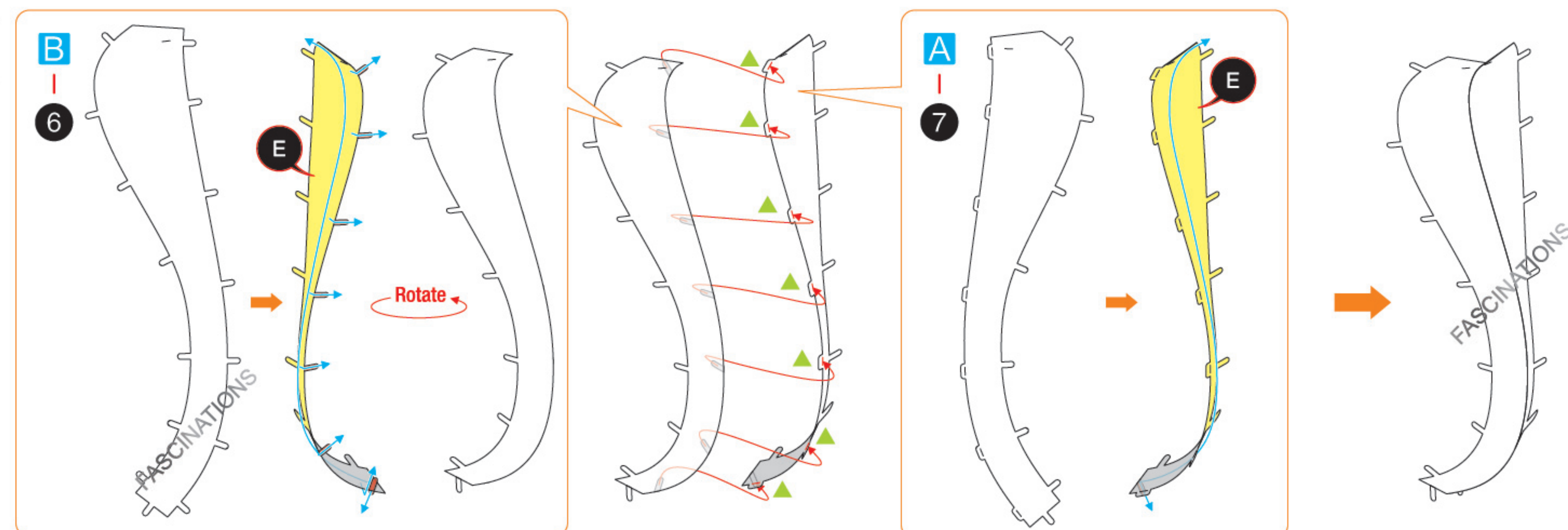
In order to avoid possible injury from sharp edges, please carefully discard the metal sheets after parts have been removed.

## ASSEMBLY FLOW CHART

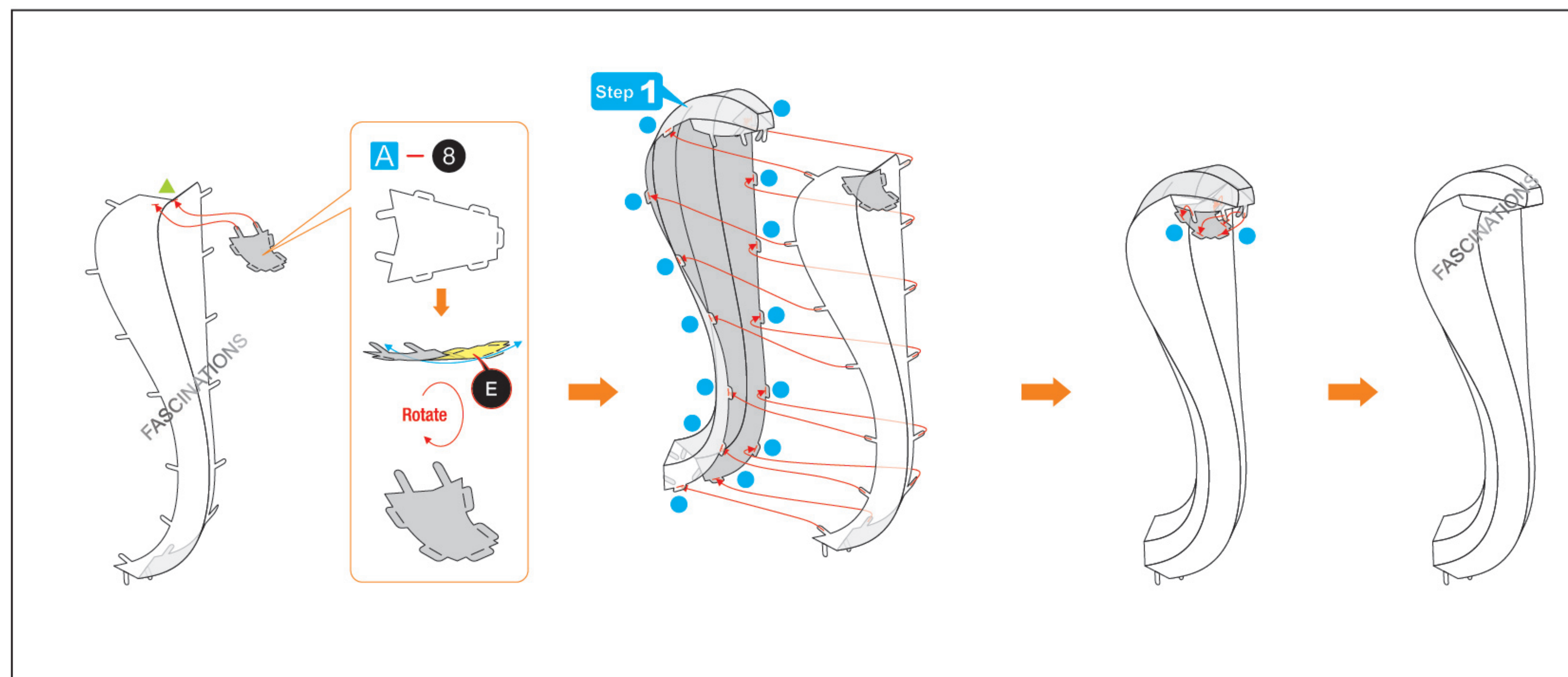
### Step 1



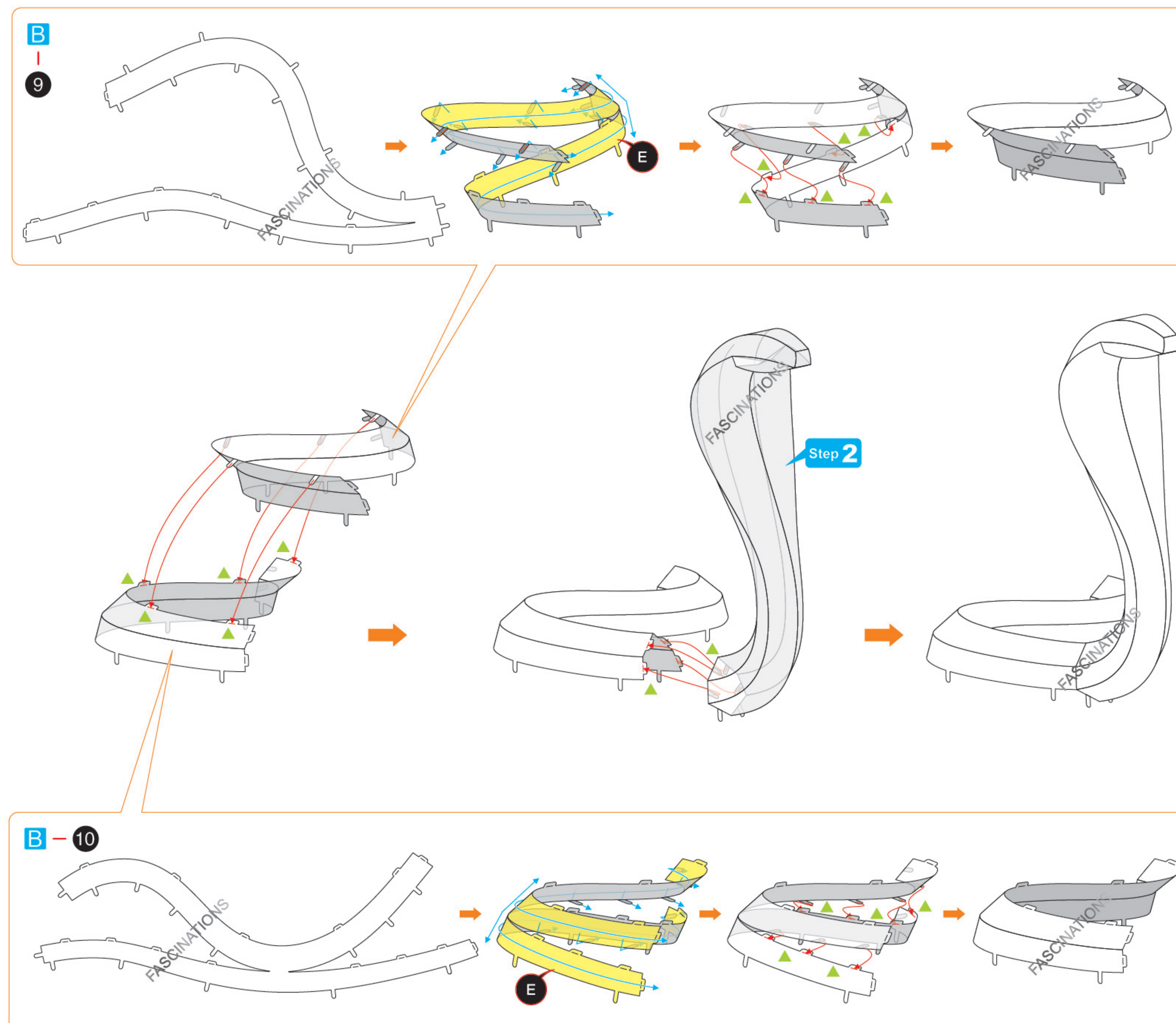
### Step 2



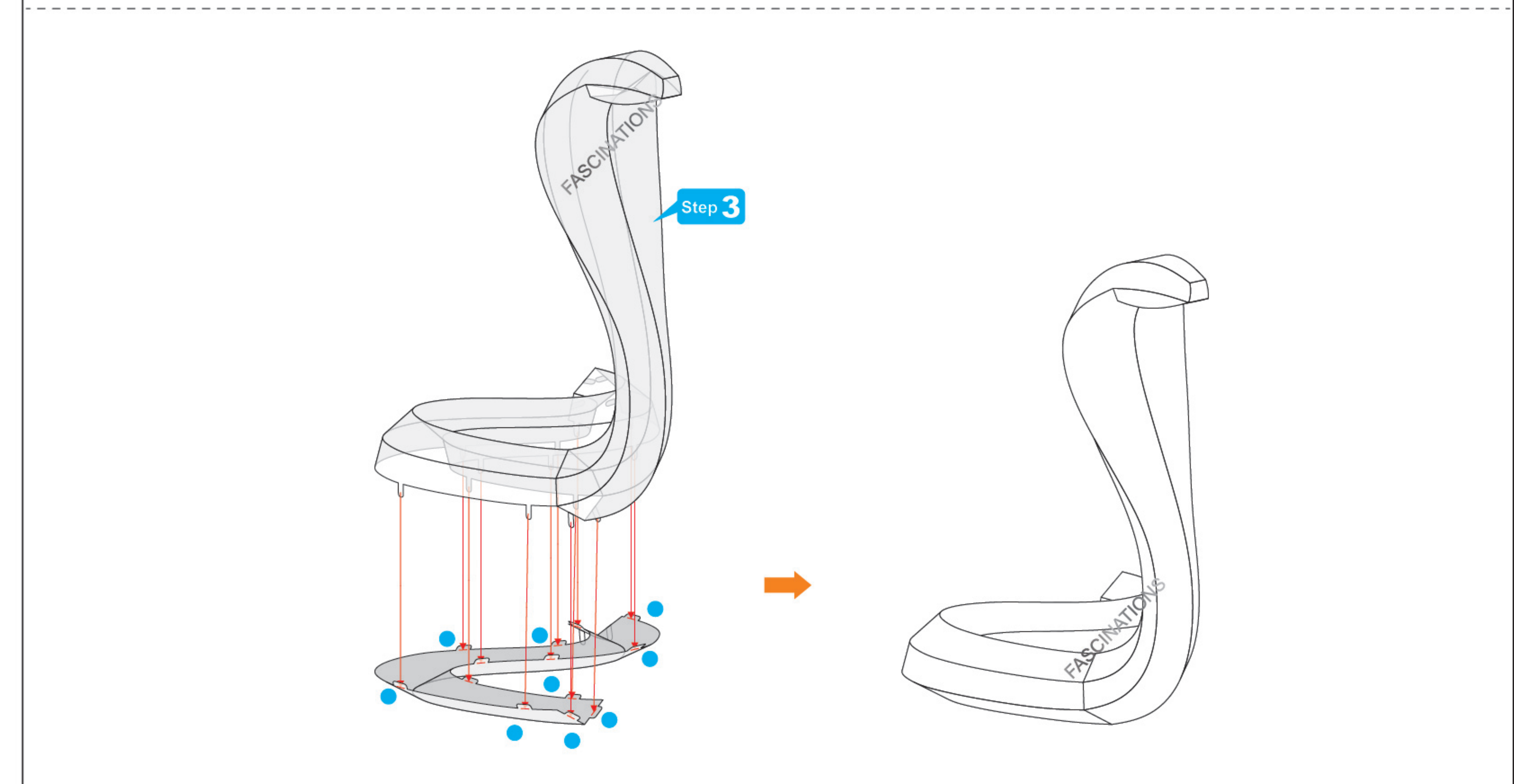
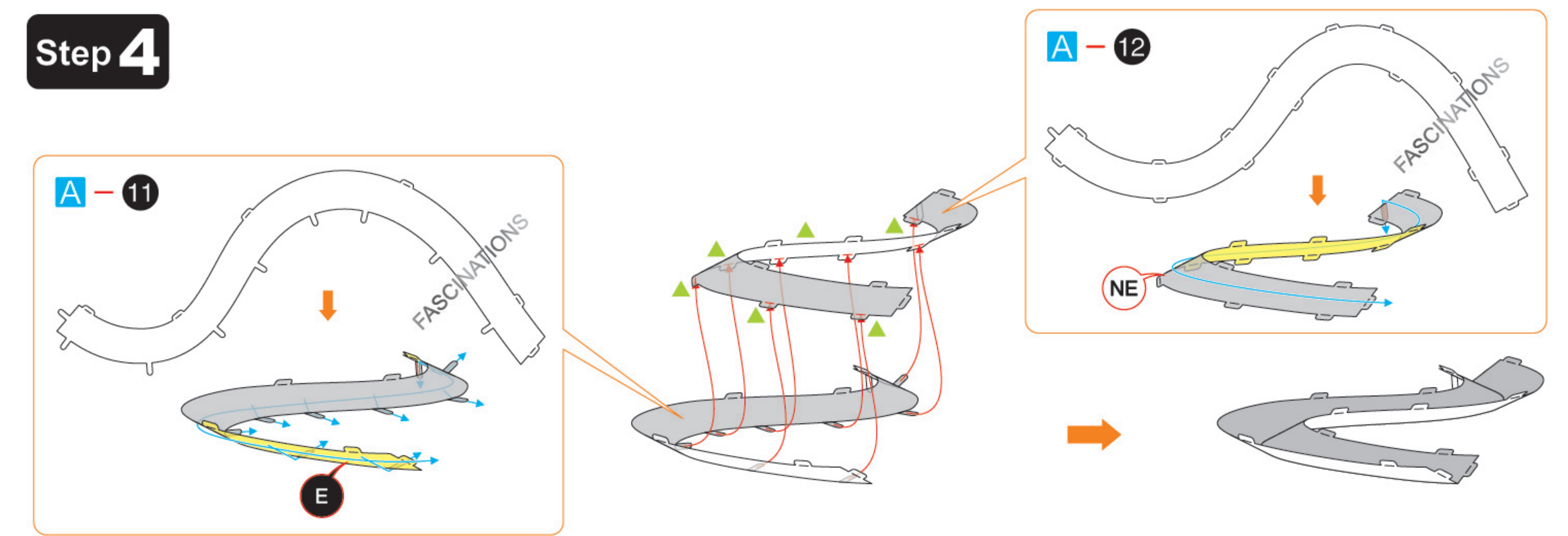




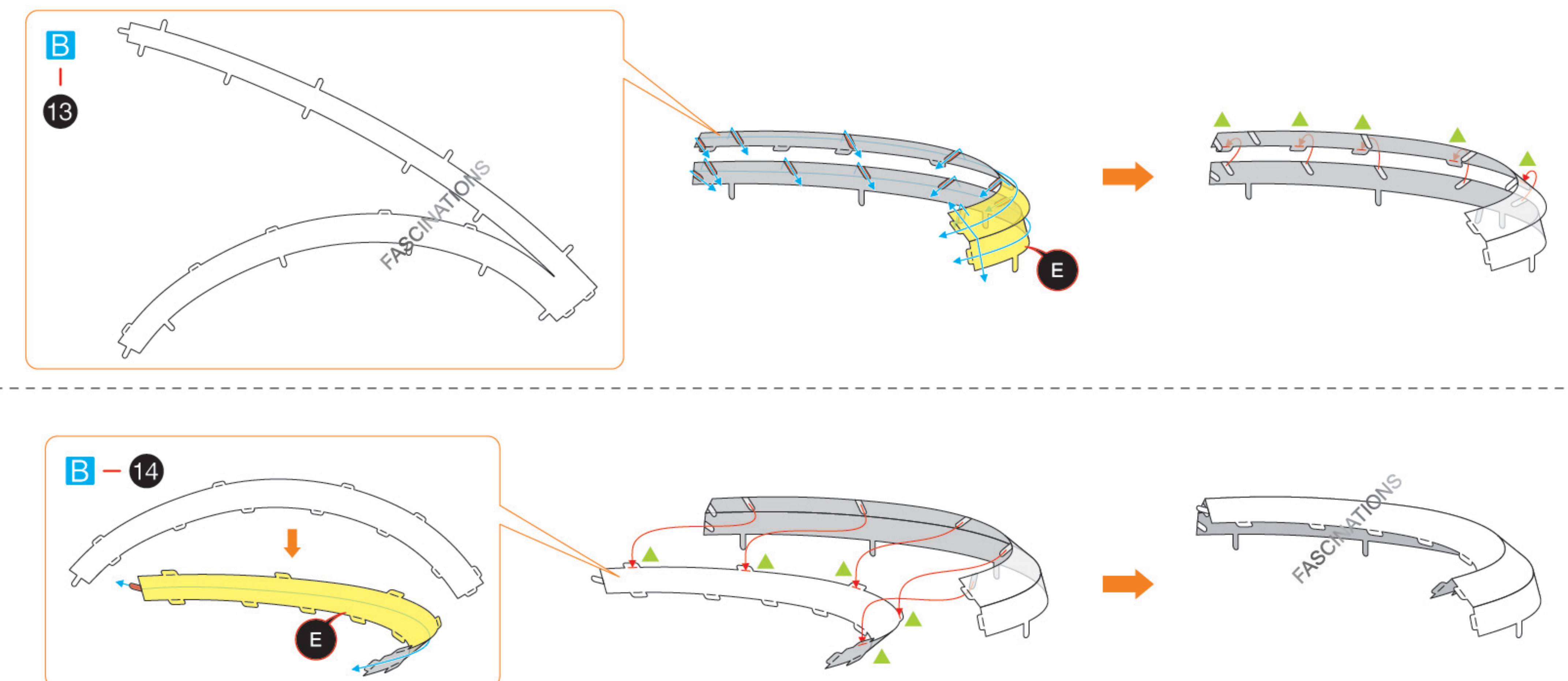
## Step 3



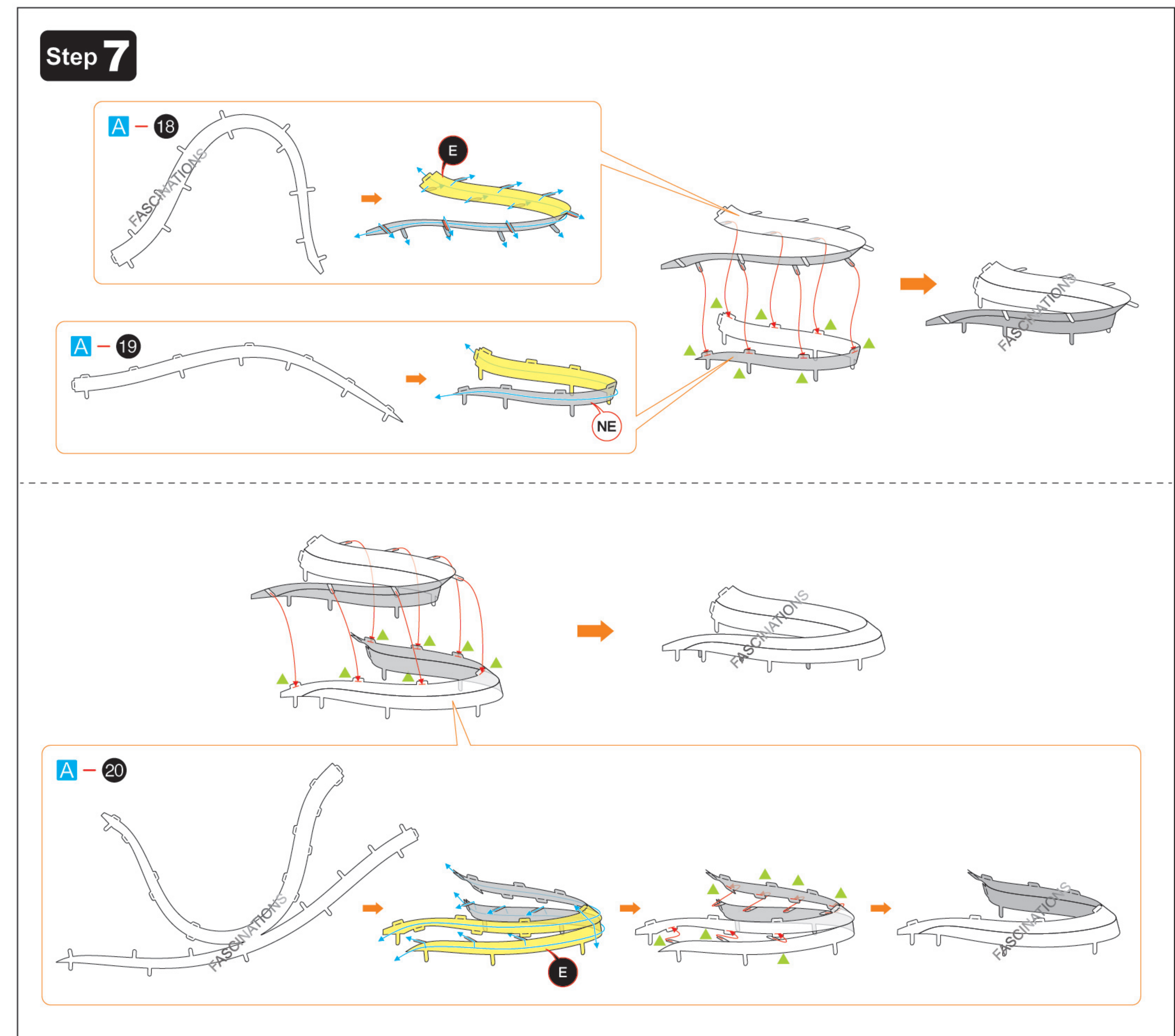
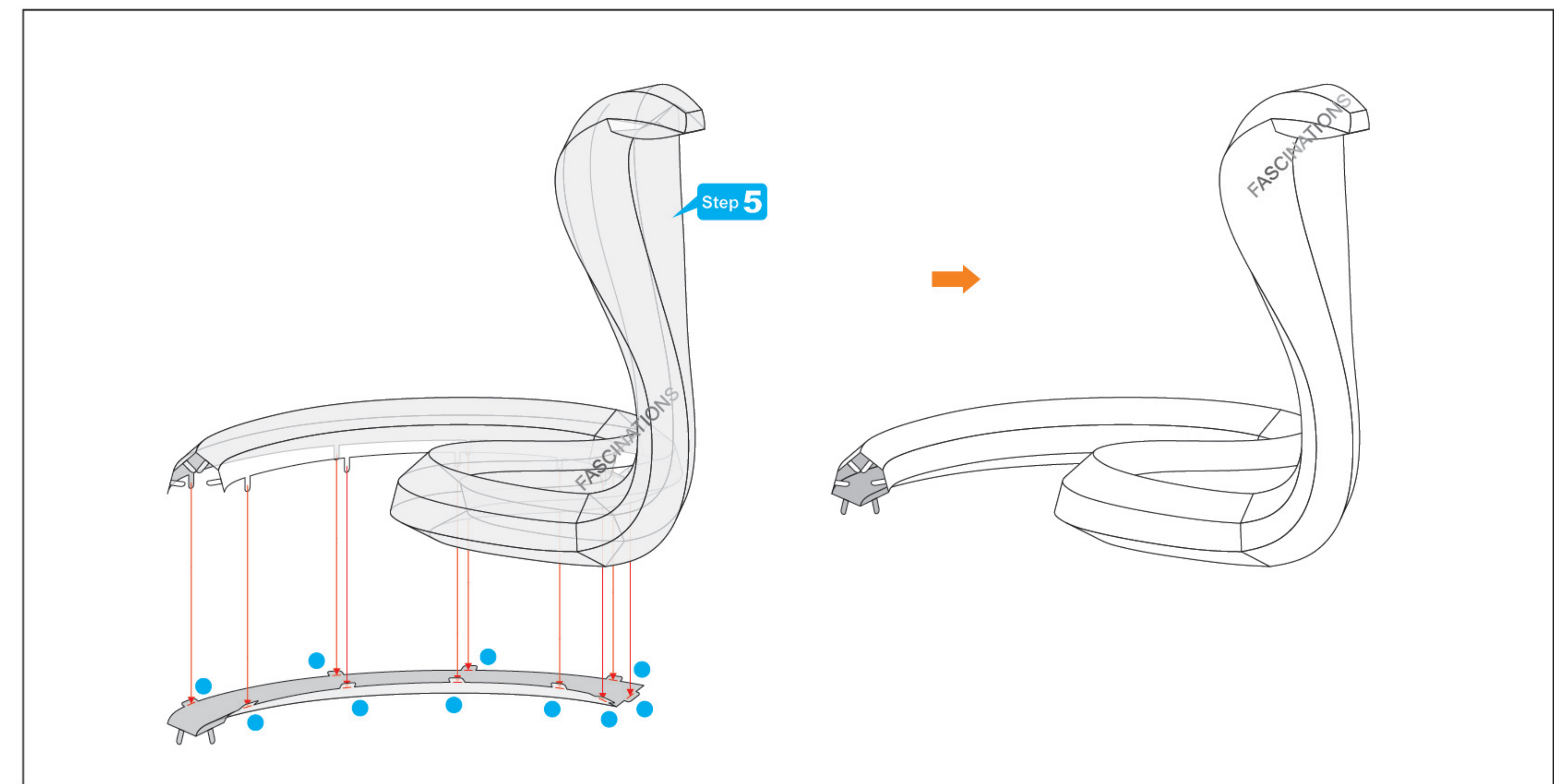
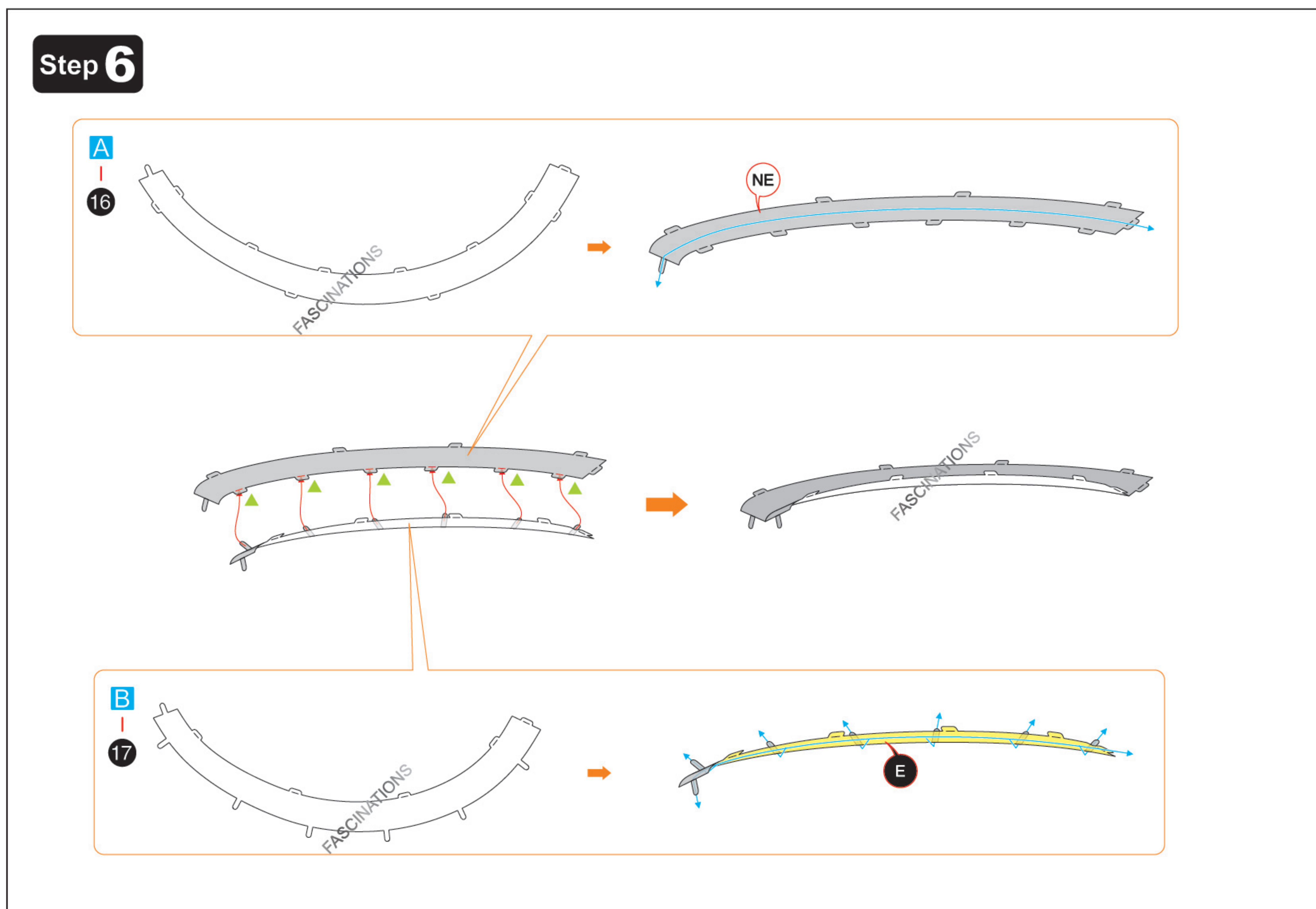
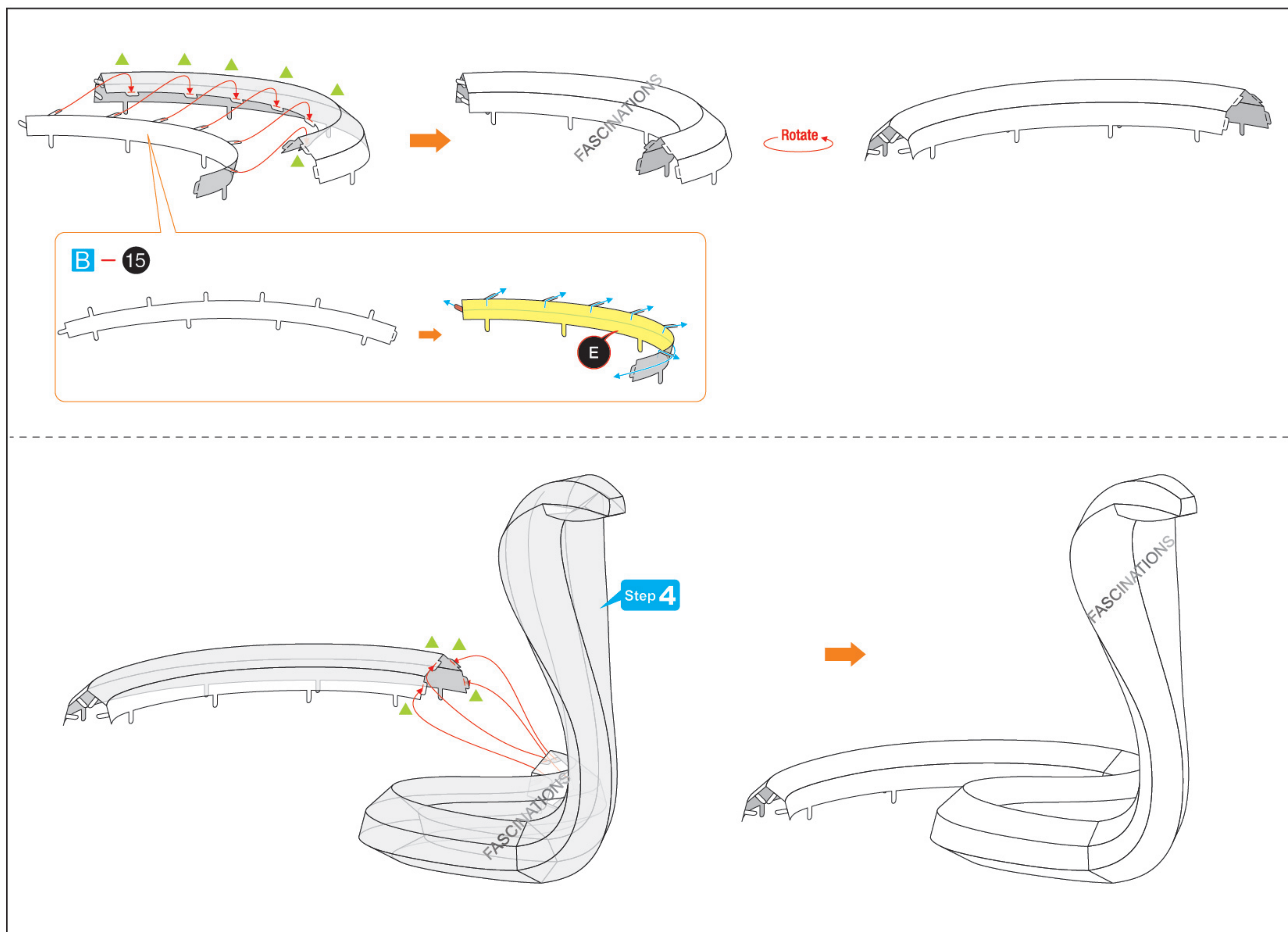
## Step 4



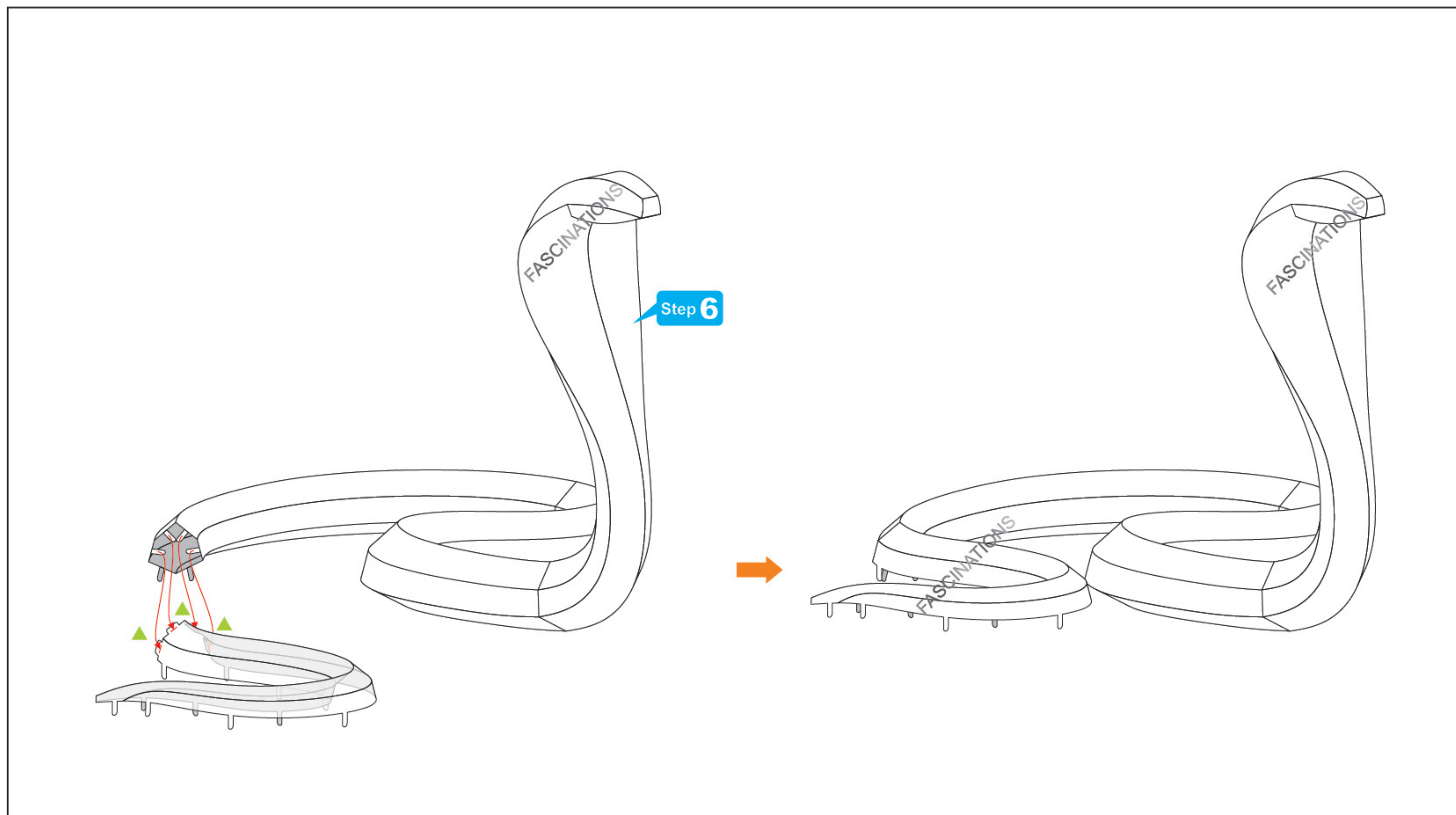
## Step 5











Step 8

