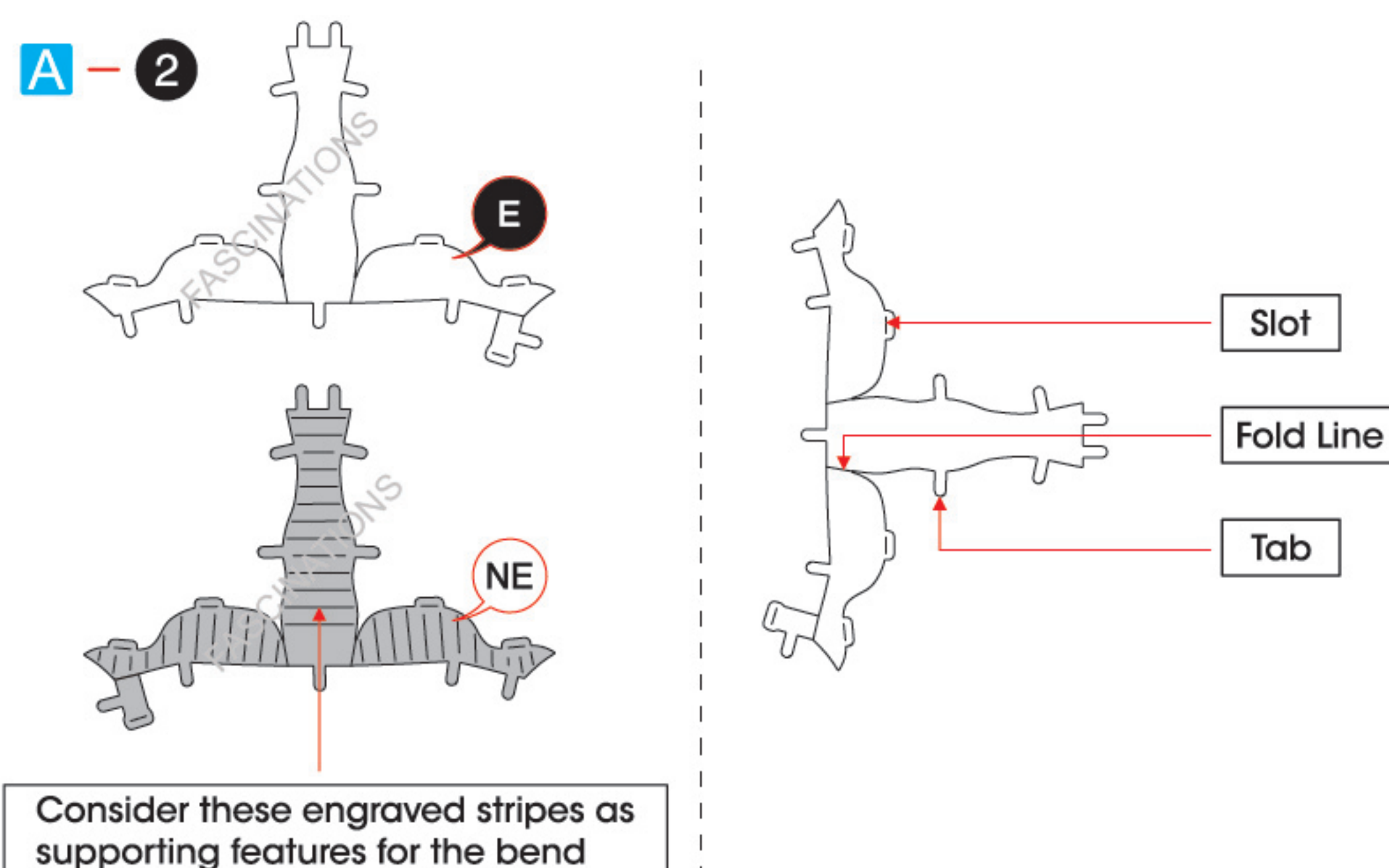


## BLACK WIDOW SPIDER ME1038



It is highly recommended that you visit  
[www.metalearth.com/360/ME1038](http://www.metalearth.com/360/ME1038)  
to see the completed model before assembling your own

### TO CREATE THE BEST CONNECTIONS



#### Legends:

- E** Engraved/ Color side
- NE** Non - engraved/ Silver side
- Attention point
- Insert tab and bend 90 degrees
- Insert tab and twist 90 degrees

#### Assembly tip:

If needed, slightly twist tabs to hold parts together then untwist and bend them down for a nice finish.

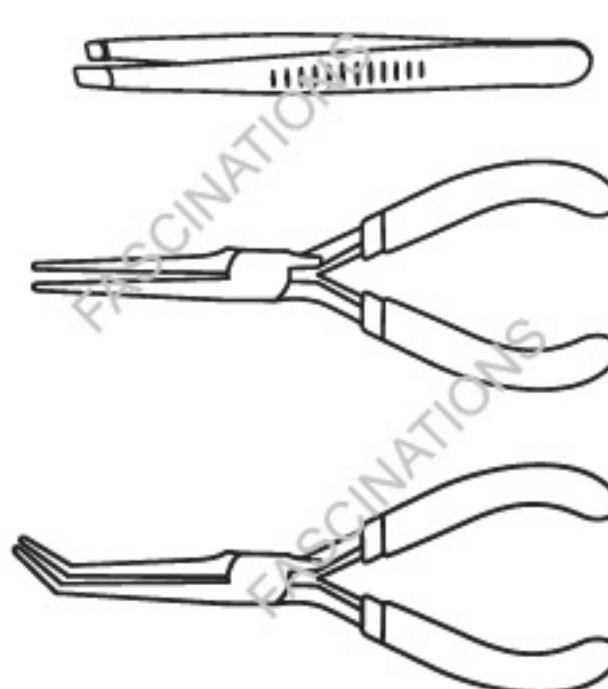
- Yellow areas should be curled
- Red areas should be folded

#### Recommended tools:

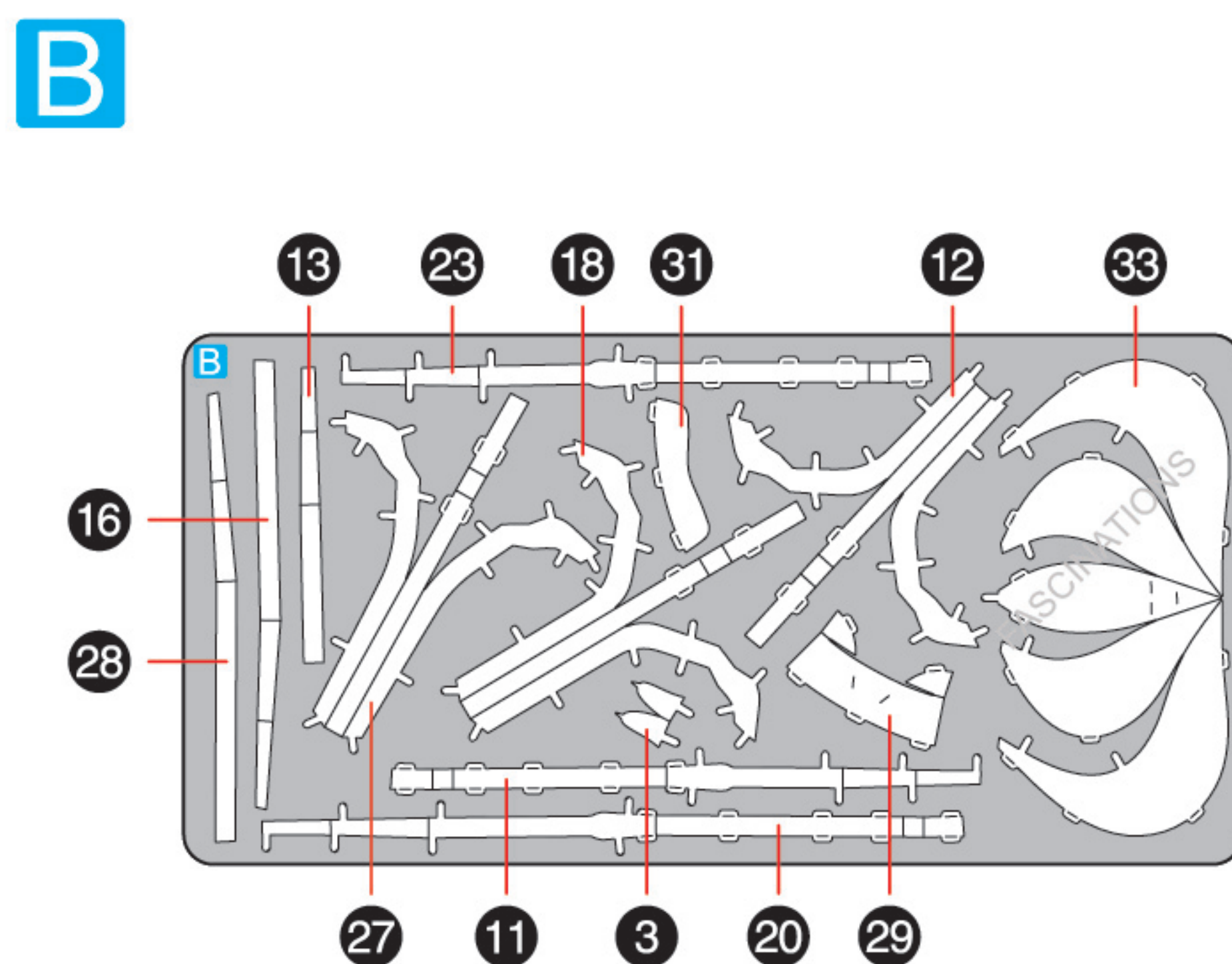
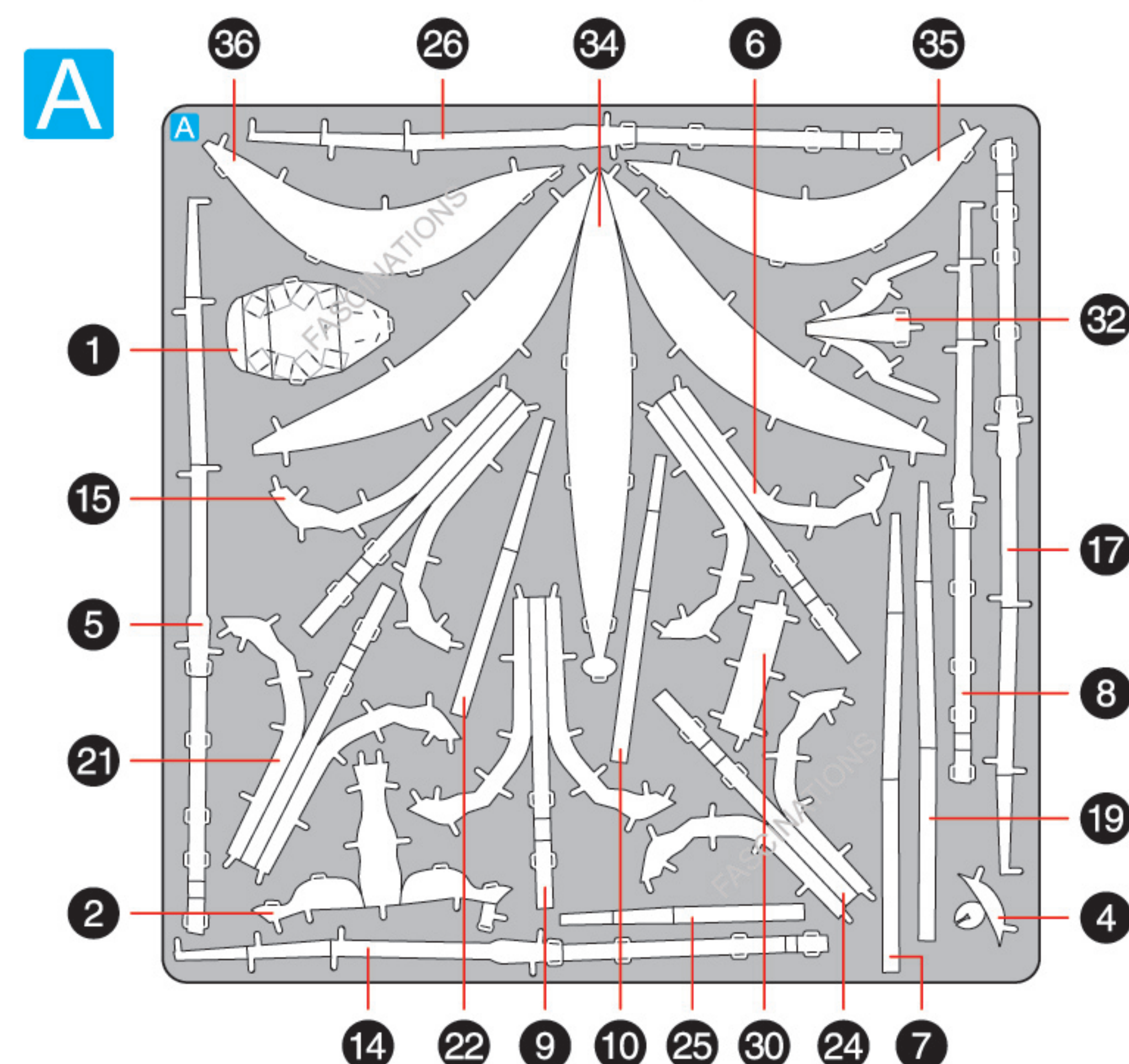
- Wire cutters: helpful for taking parts from the metal sheets.



- Tweezers or needle nose pliers: helpful for folding parts, bending and twisting tabs.



### METAL SHEETS



In order to avoid possible injury from sharp edges, please carefully discard the metal sheets after parts have been removed.

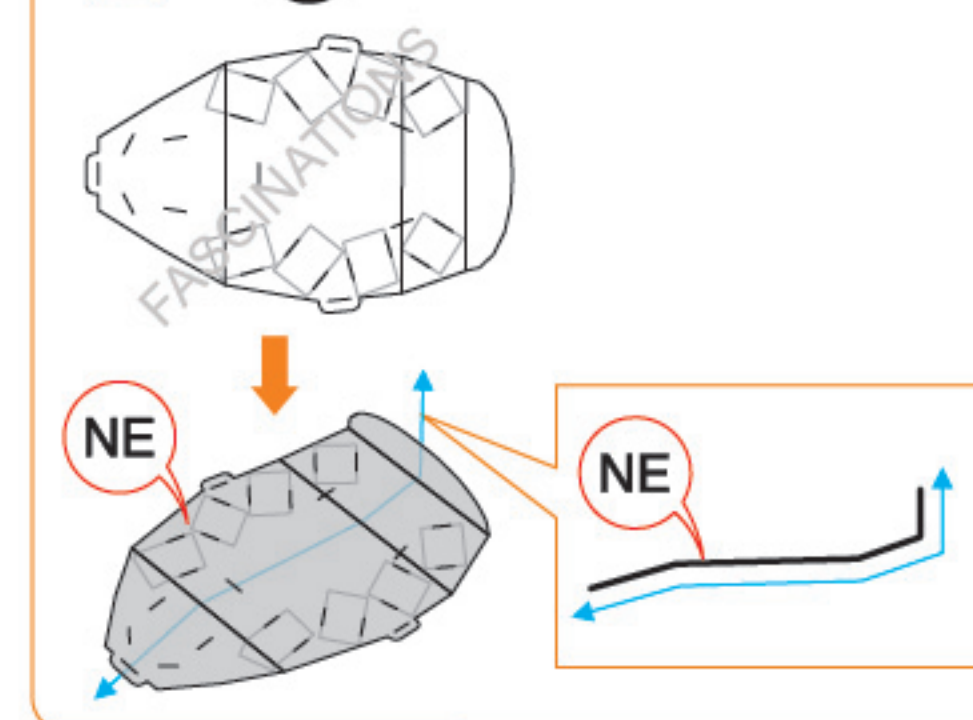


Go to [www.metalearth.com/360/ME1038](http://www.metalearth.com/360/ME1038) to see the zoomable PDF version of this instruction sheet

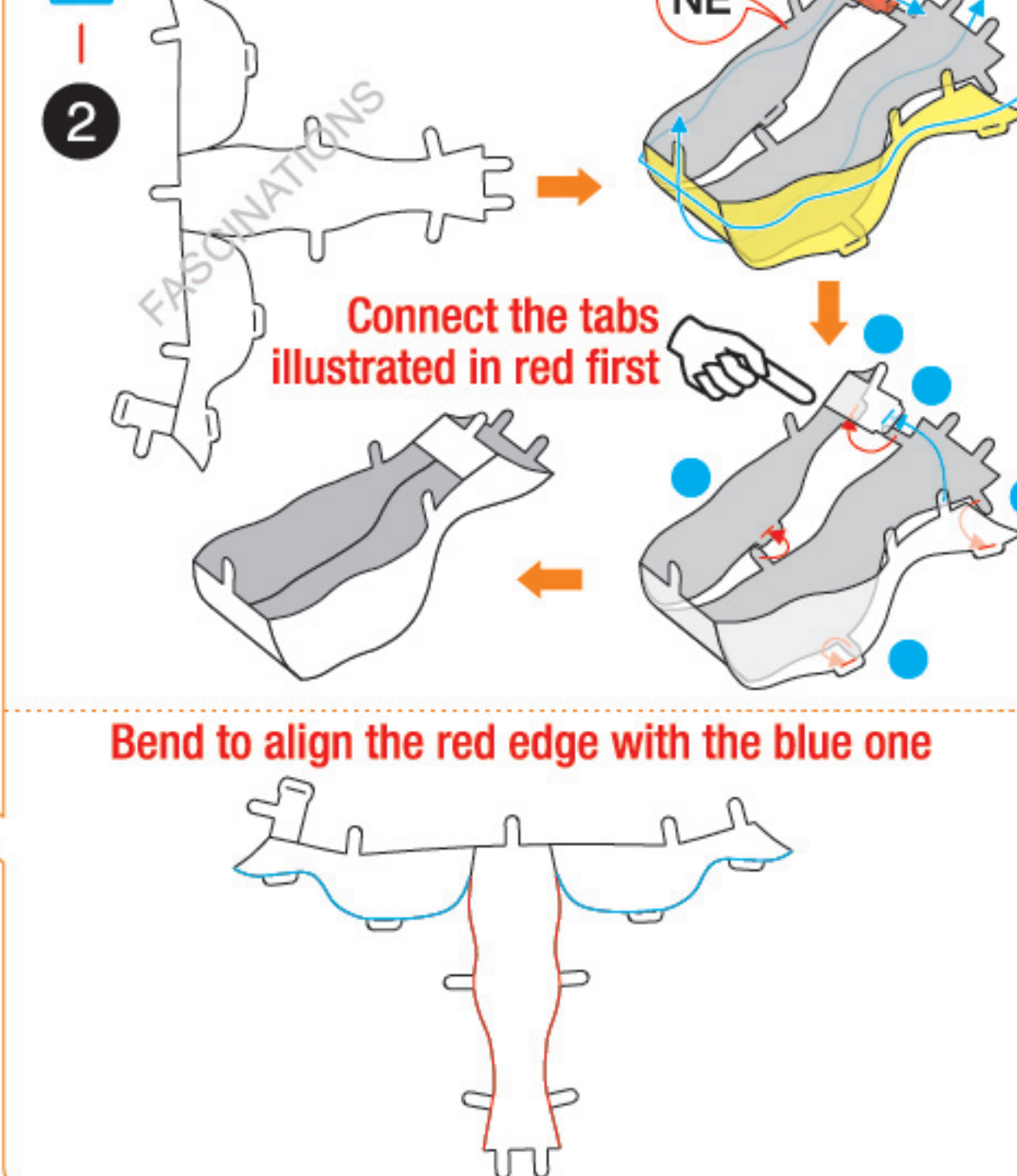
### ASSEMBLY FLOW CHART

#### Step 1

##### A - 1



##### A - 2



##### B - 3



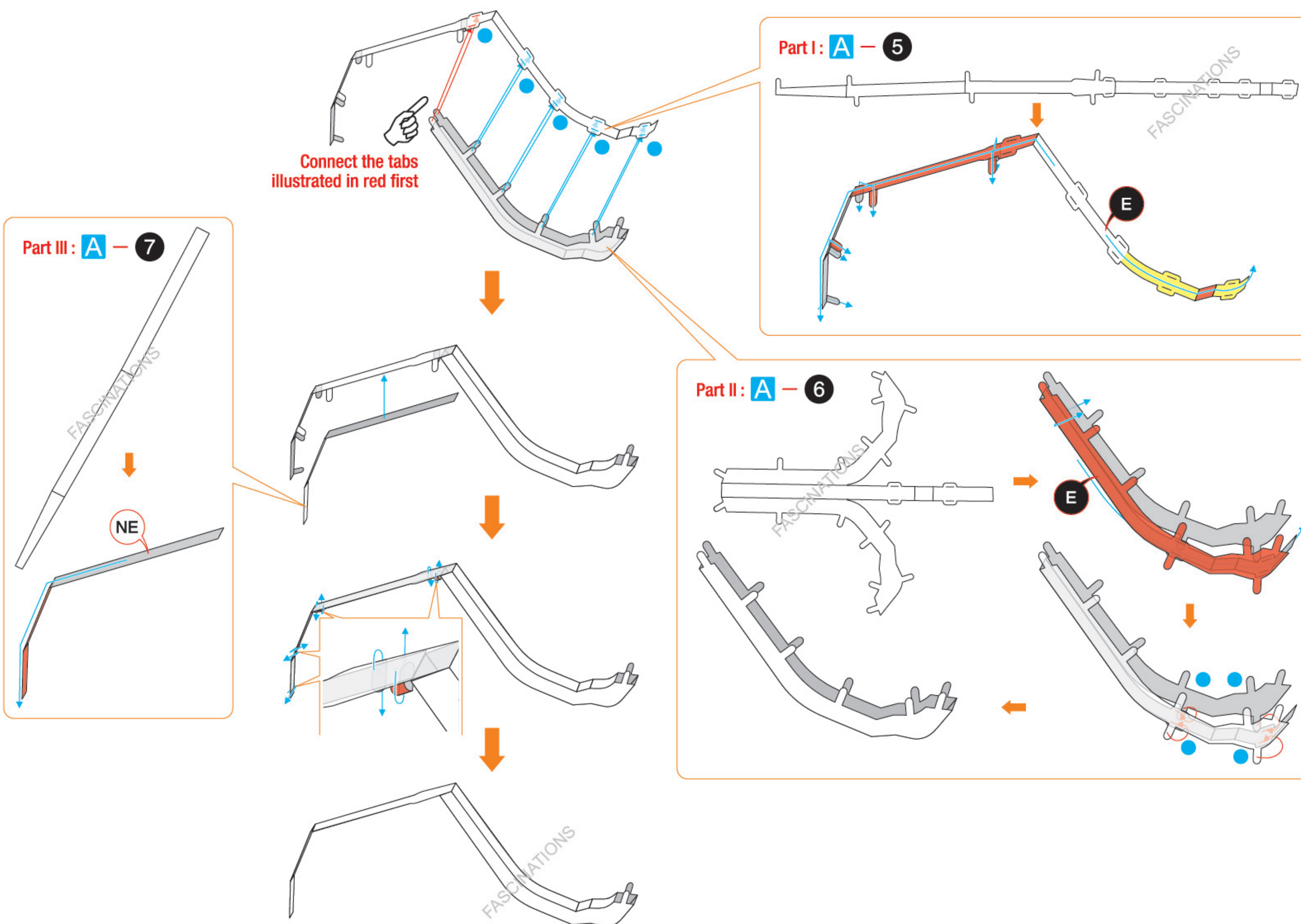
##### A - 4



#### Step 2

Use the LIST OF PARTS below to complete Step 2 through Step 9 by applying the assembly flow of Step 2:

	Step 2	Step 3	Step 4	Step 5	Step 6	Step 7	Step 8	Step 9
Part I	A - 5	A - 8	B - 11	A - 14	A - 17	B - 20	B - 23	A - 26
Part II	A - 6	A - 9	B - 12	A - 15	B - 18	A - 21	A - 24	B - 27
Part III	A - 7	A - 10	B - 13	B - 16	A - 19	A - 22	A - 25	B - 28





## Step 10

