

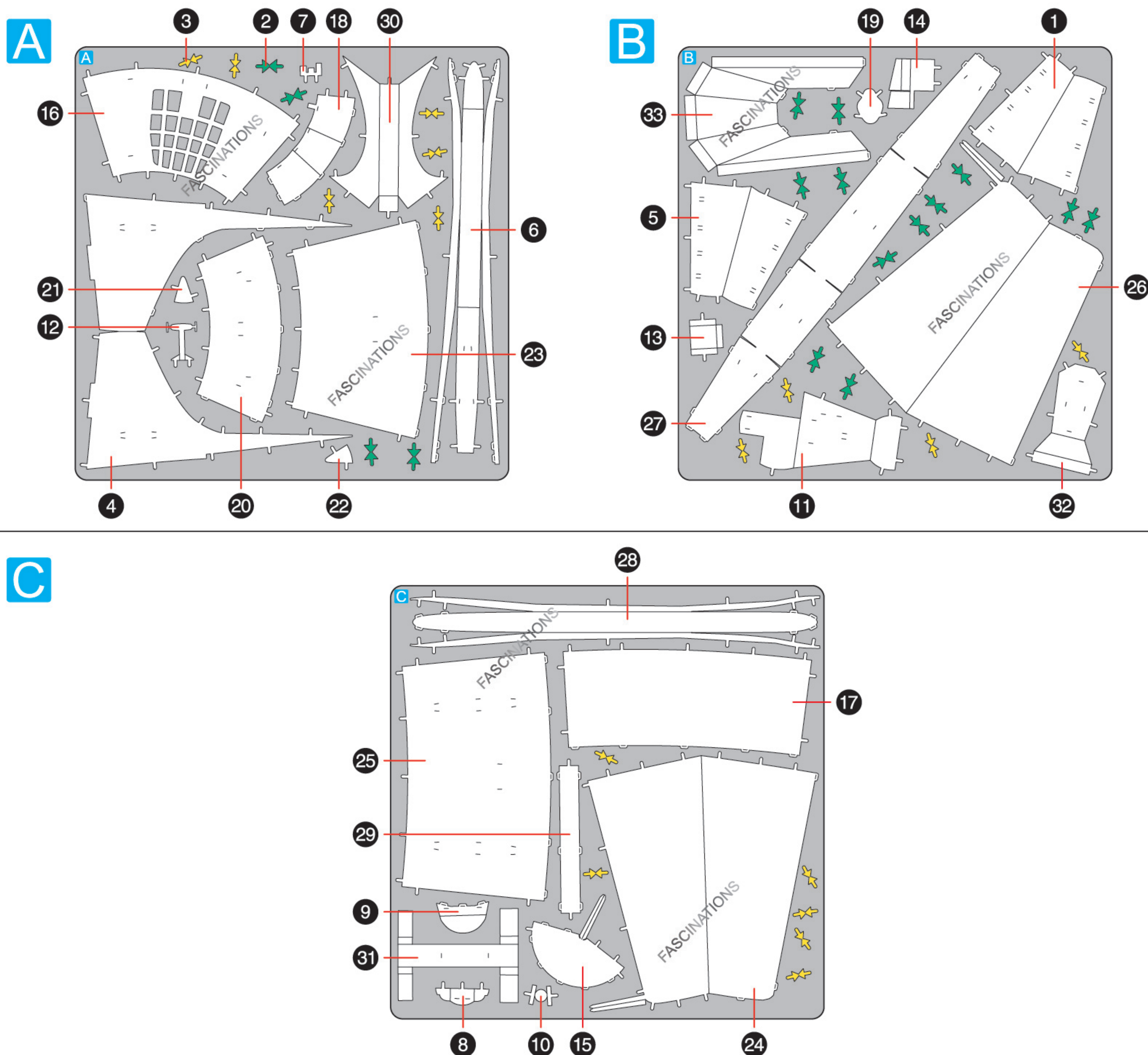
**BELL® X-1**  
**ME1039**



It is highly recommended that you visit  
[www.metalearth.com/360/ME1039](http://www.metalearth.com/360/ME1039)  
to see the completed model before assembling your own

## METAL SHEETS

Parts with same color are duplicates

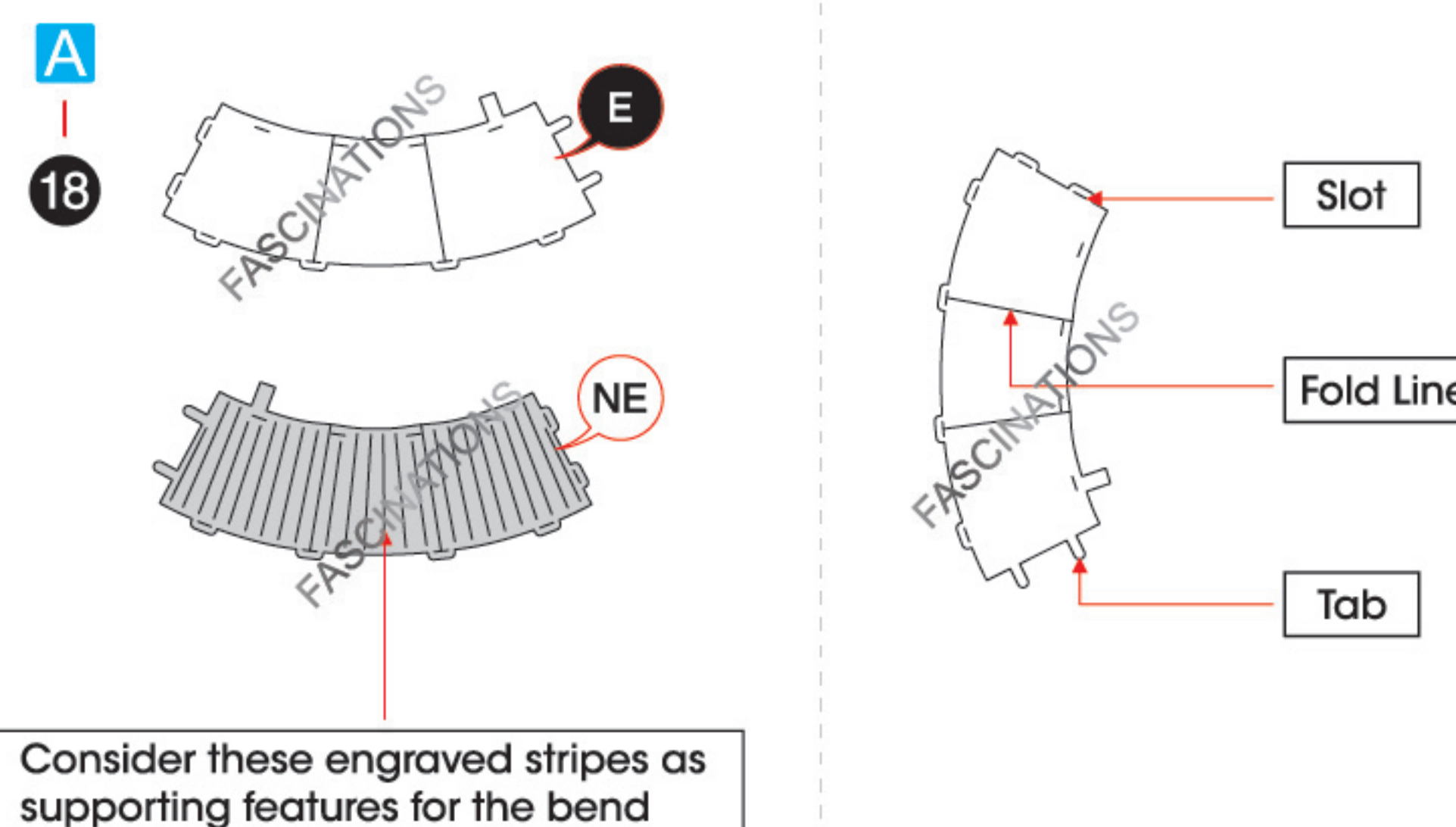


In order to avoid possible injury from sharp edges, please carefully discard the metal sheets after parts have been removed.



Go to [www.metalearth.com/360/ME1039](http://www.metalearth.com/360/ME1039) to see the zoomable PDF version of this instruction sheet

## TO CREATE THE BEST CONNECTIONS



### Legends:

- E** Engraved/ Color side
- NE** Non - engraved/ Silver side
- Attention point
- Insert tab and bend 90 degrees
- Insert tab and twist 90 degrees

### Assembly tip:

If needed, slightly twist tabs to hold parts together then untwist and bend them down for a nice finish.

- Yellow areas should be curled
- Red areas should be folded

### Recommended tools:

- Wire cutters: helpful for taking parts from the metal sheets.

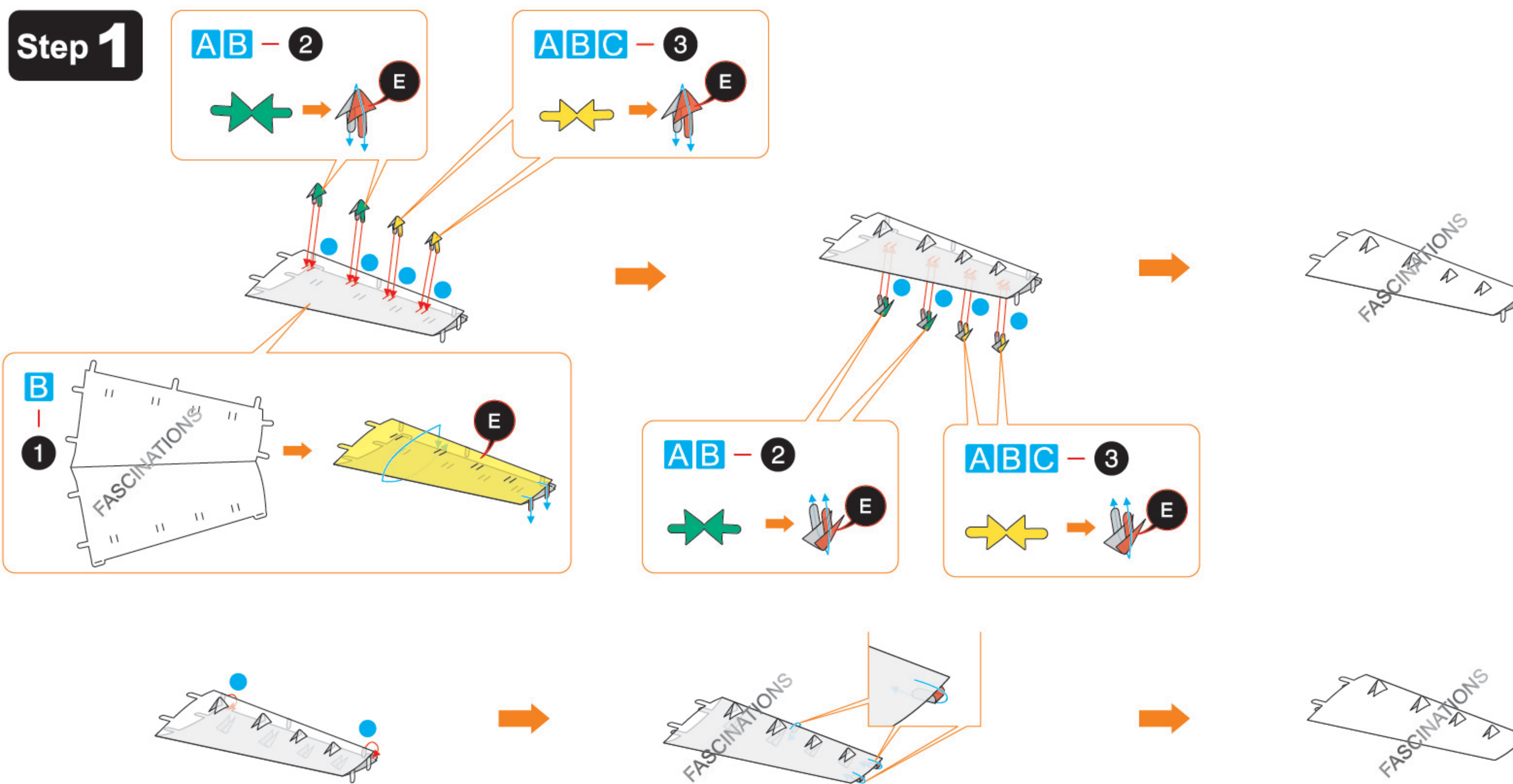


- Tweezers or needle nose pliers: helpful for folding parts, bending and twisting tabs.

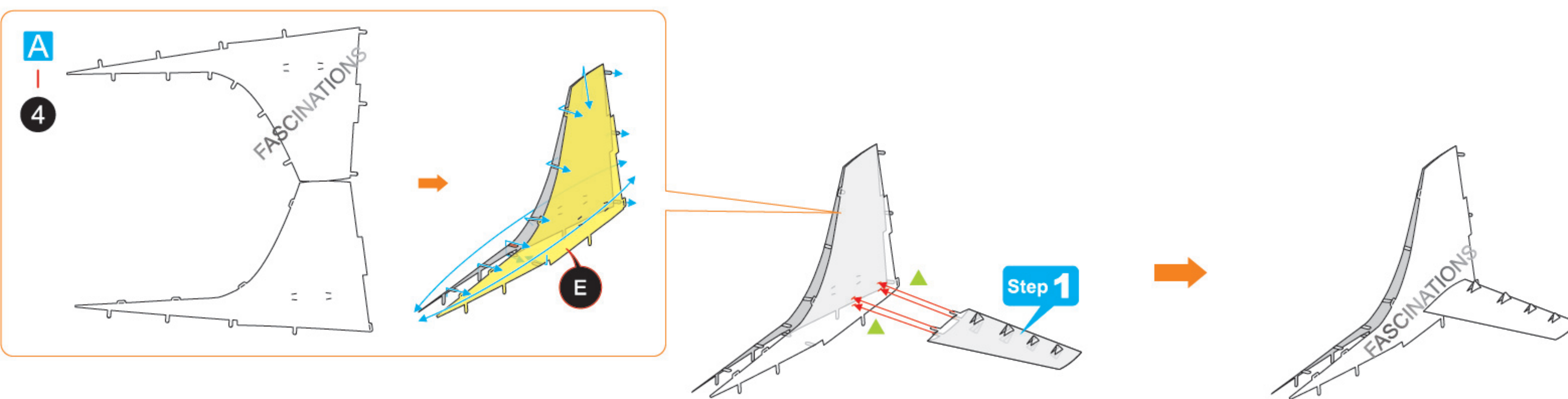


## ASSEMBLY FLOW CHART

### Step 1

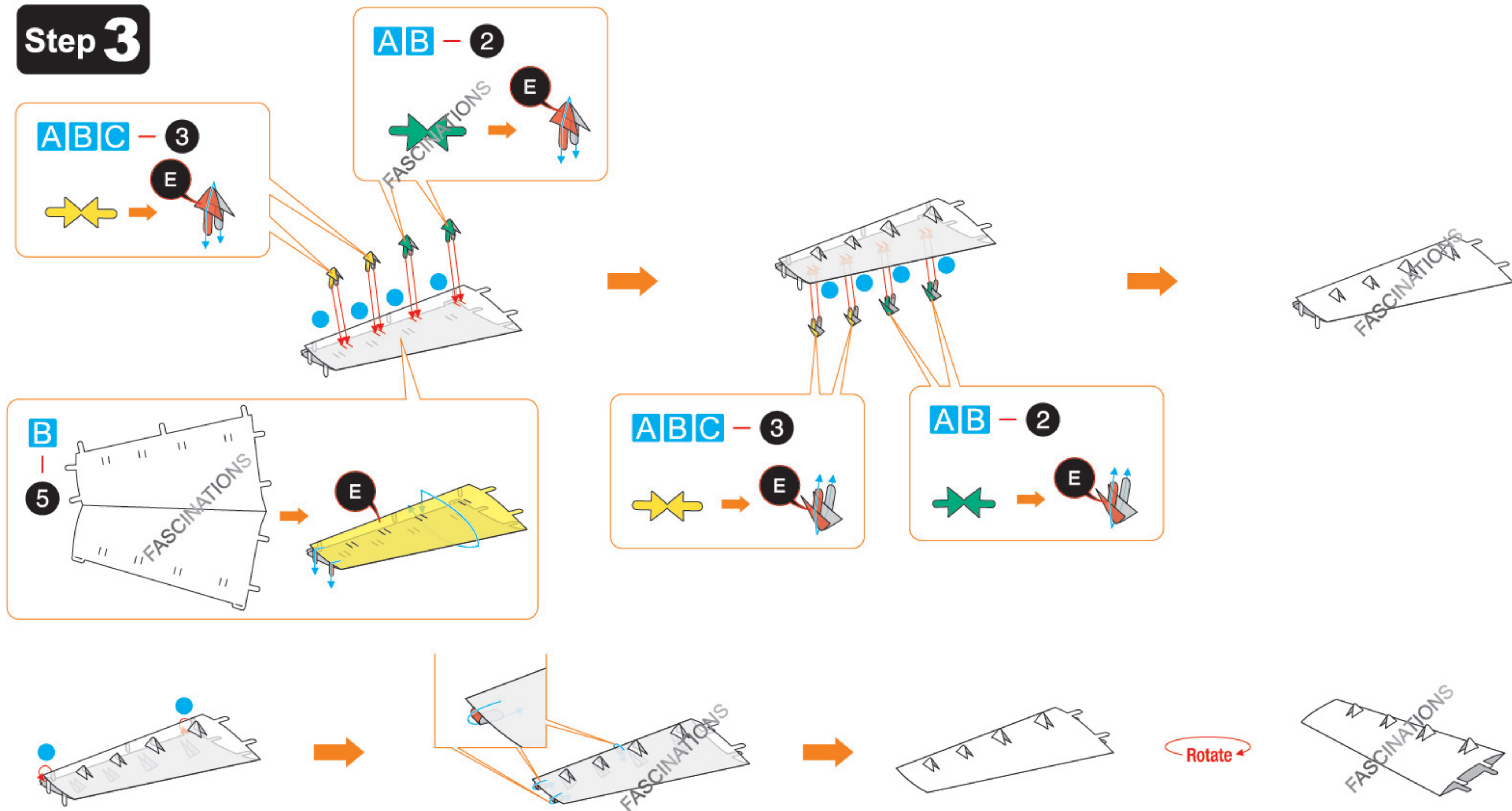


### Step 2

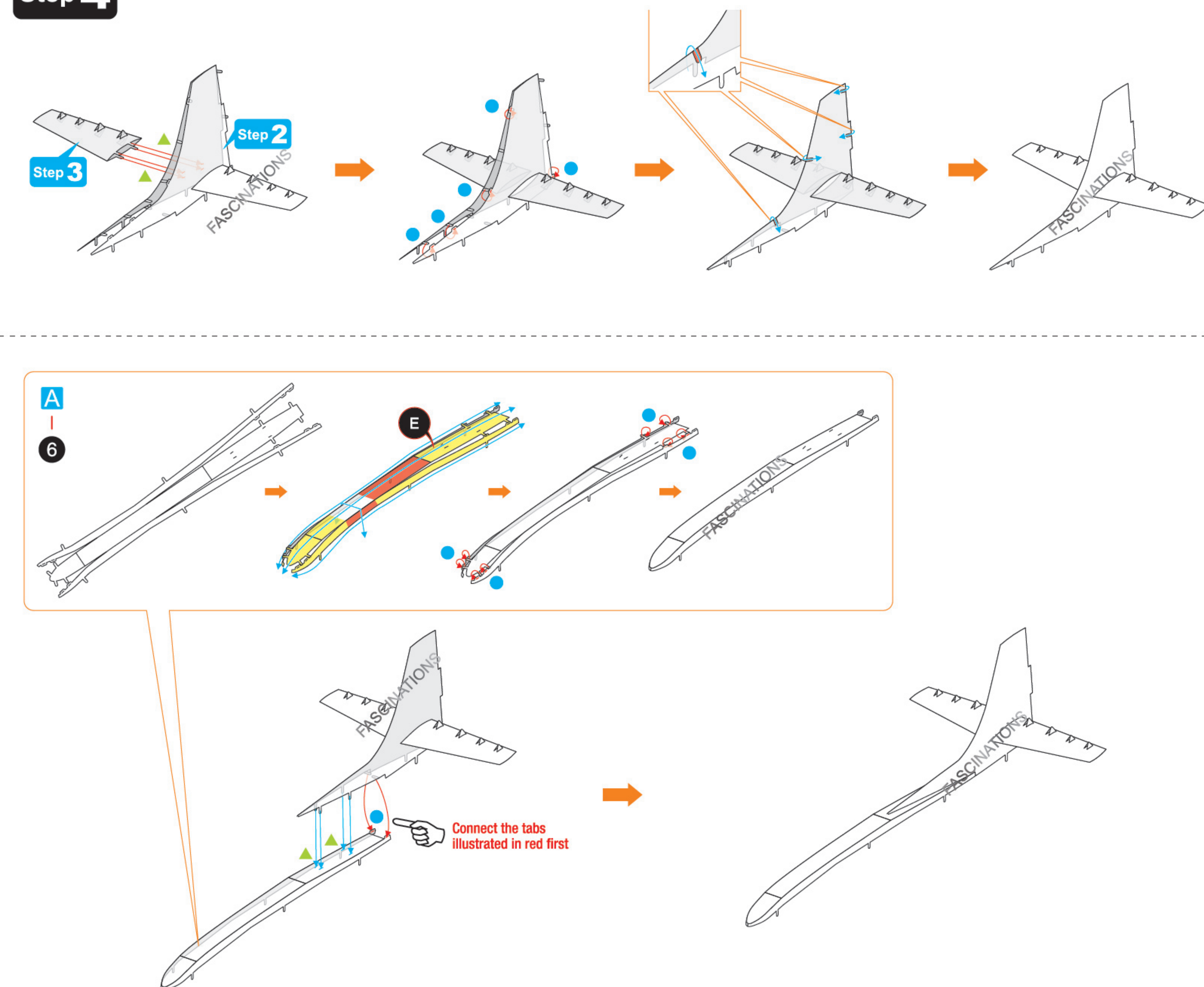




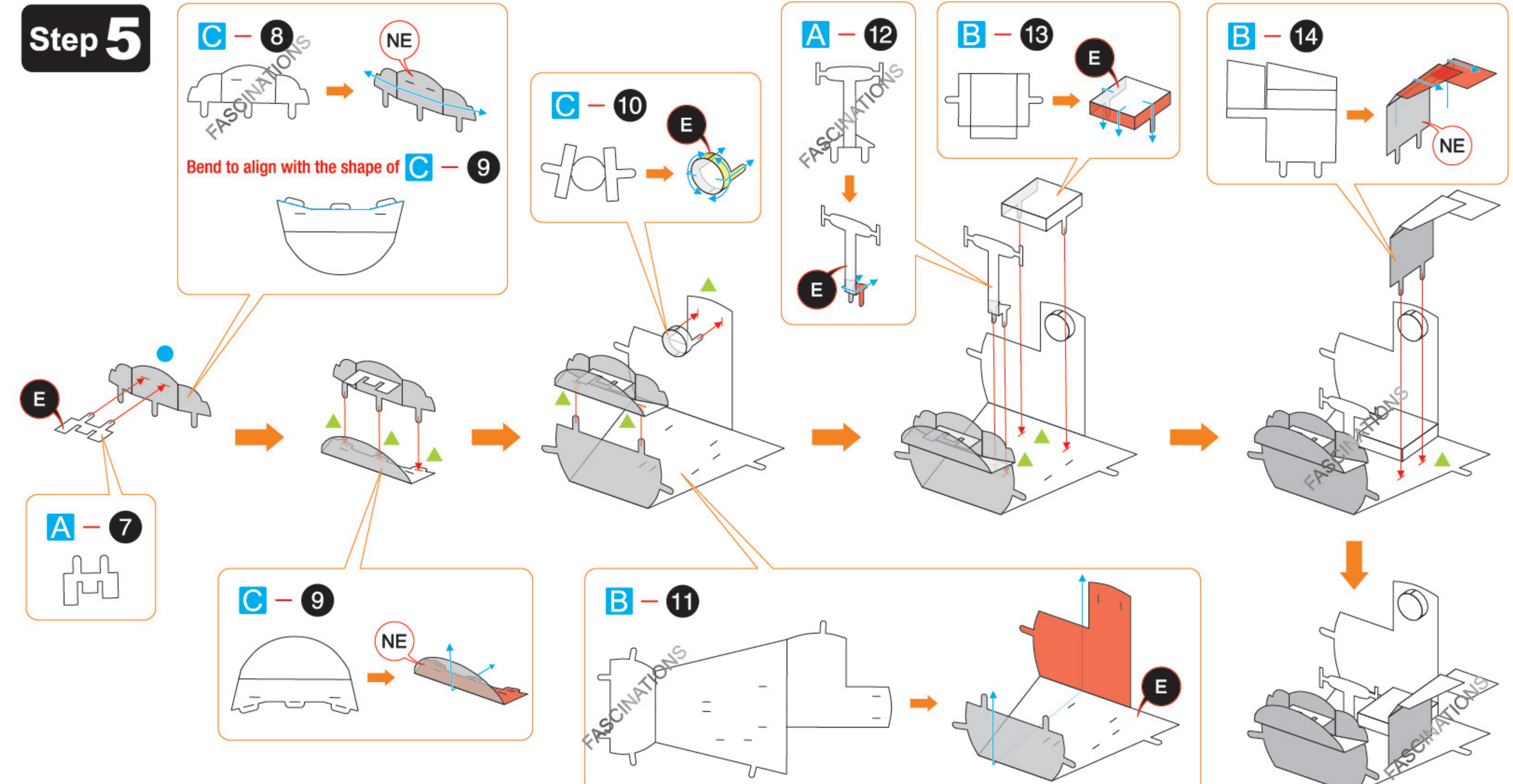
## Step 3



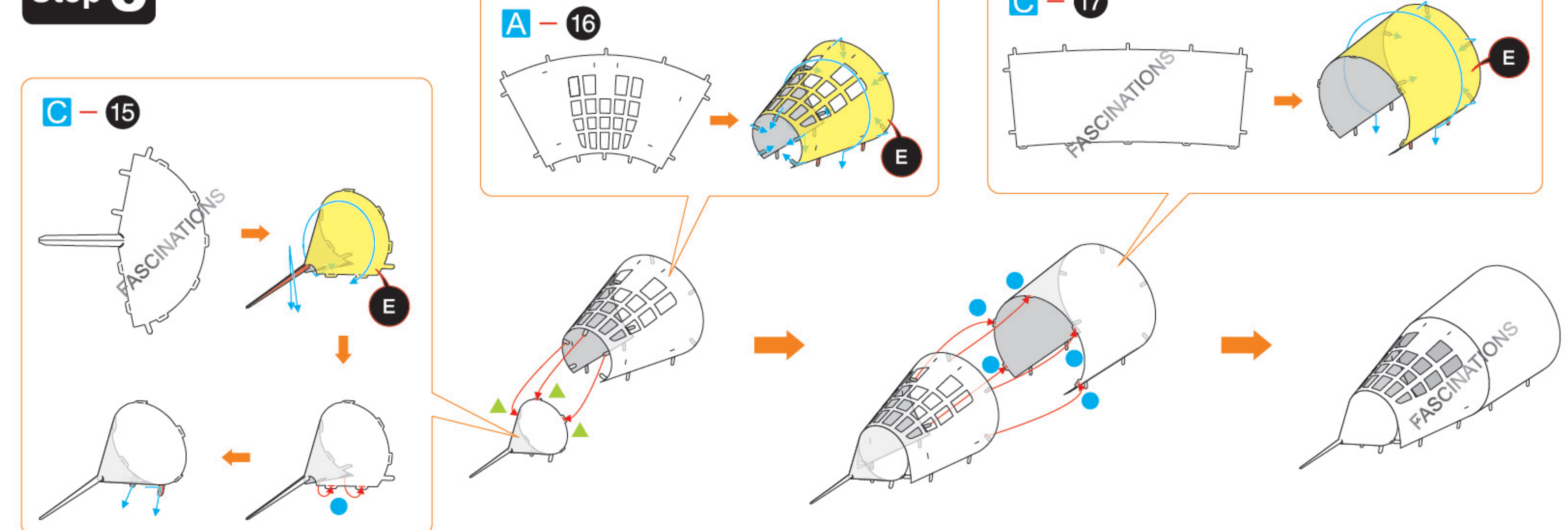
## Step 4



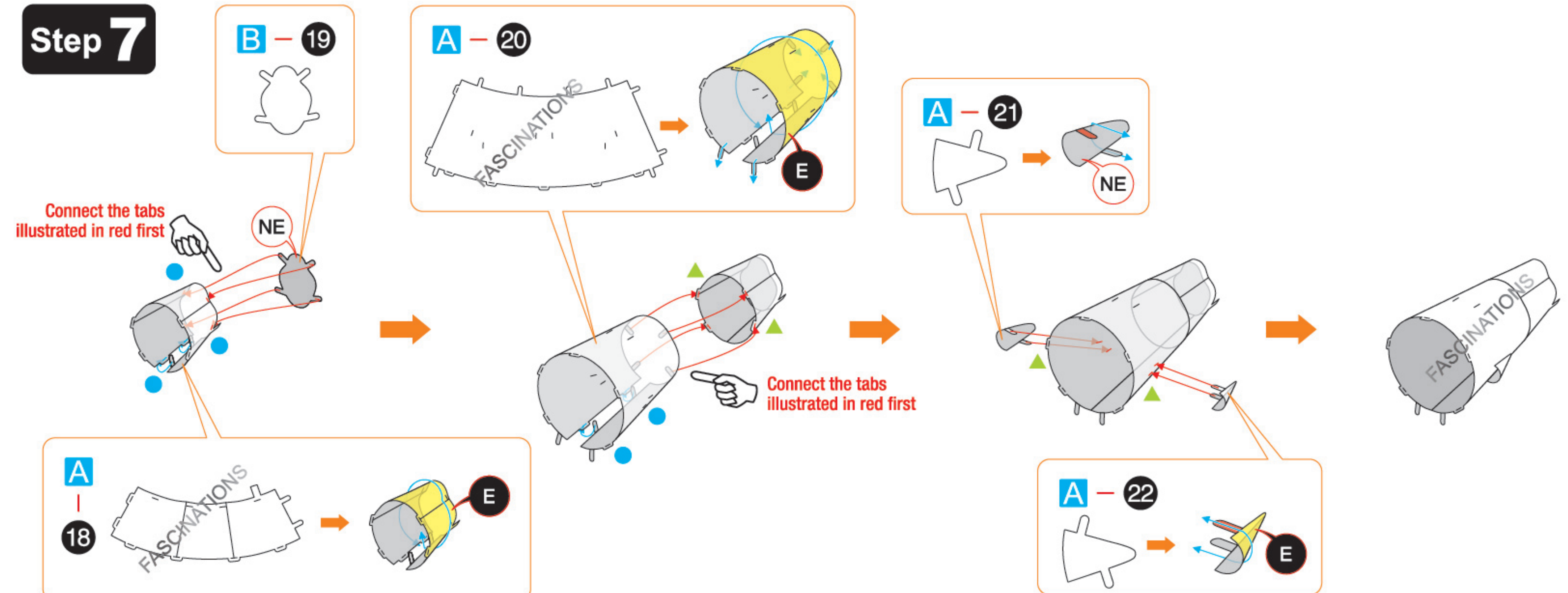
## Step 5



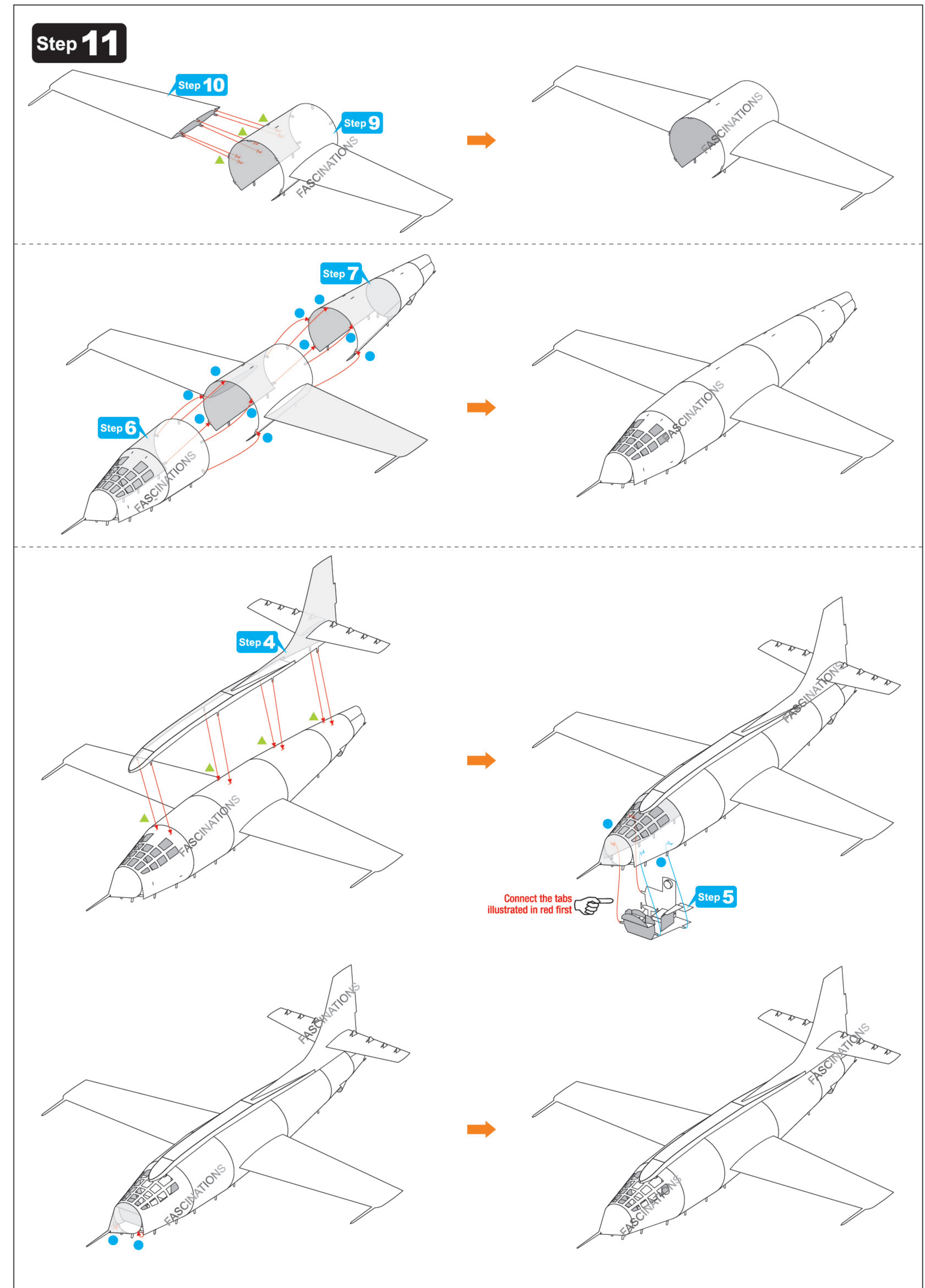
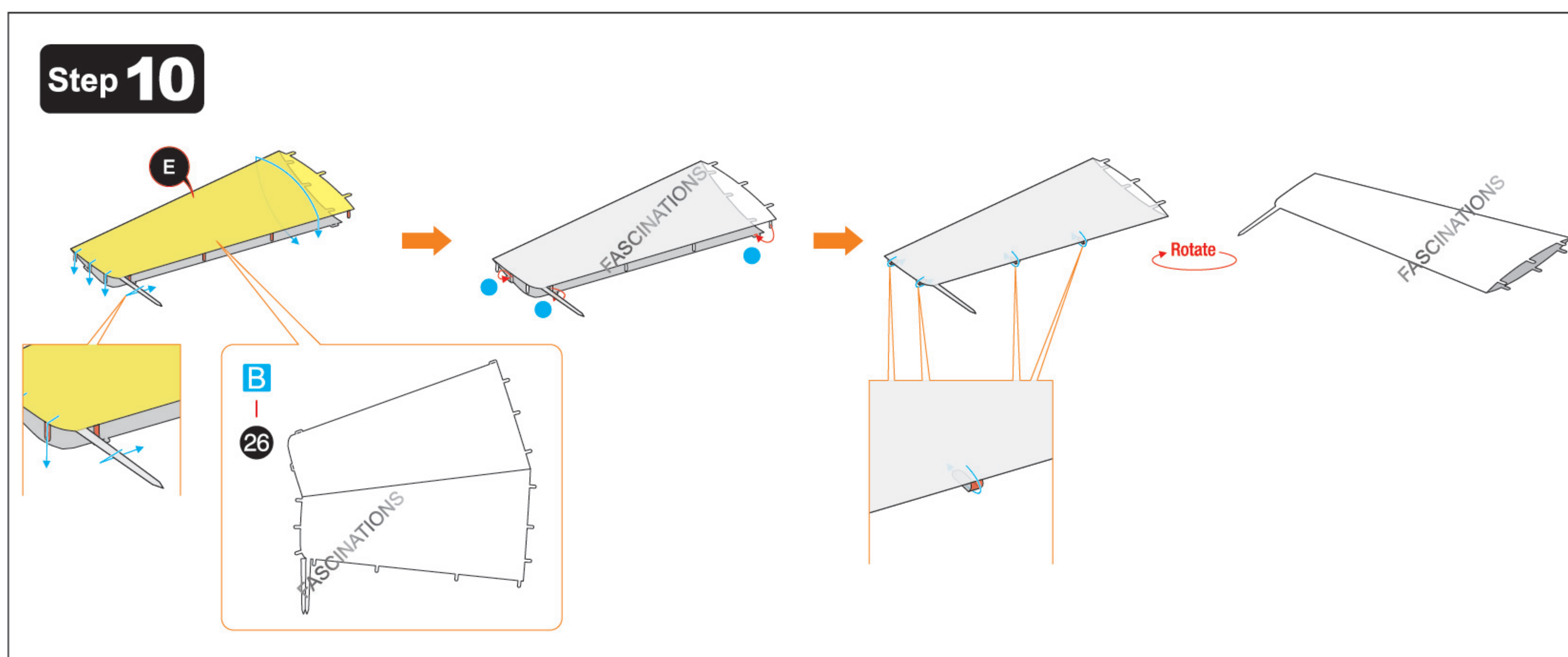
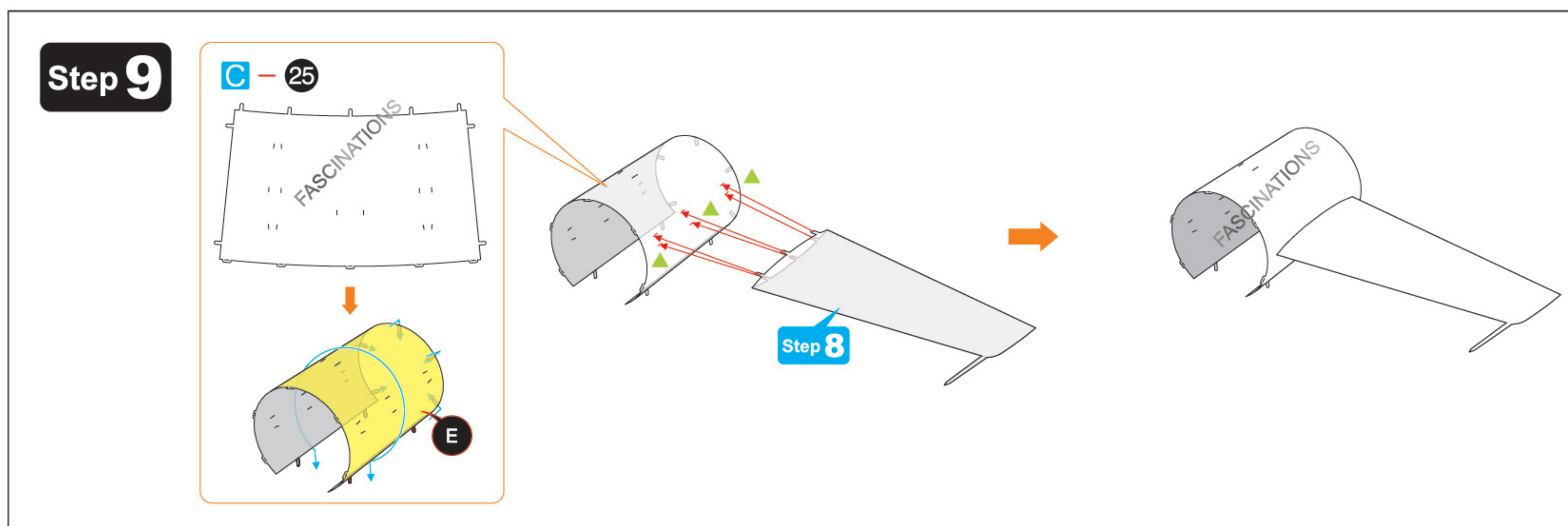
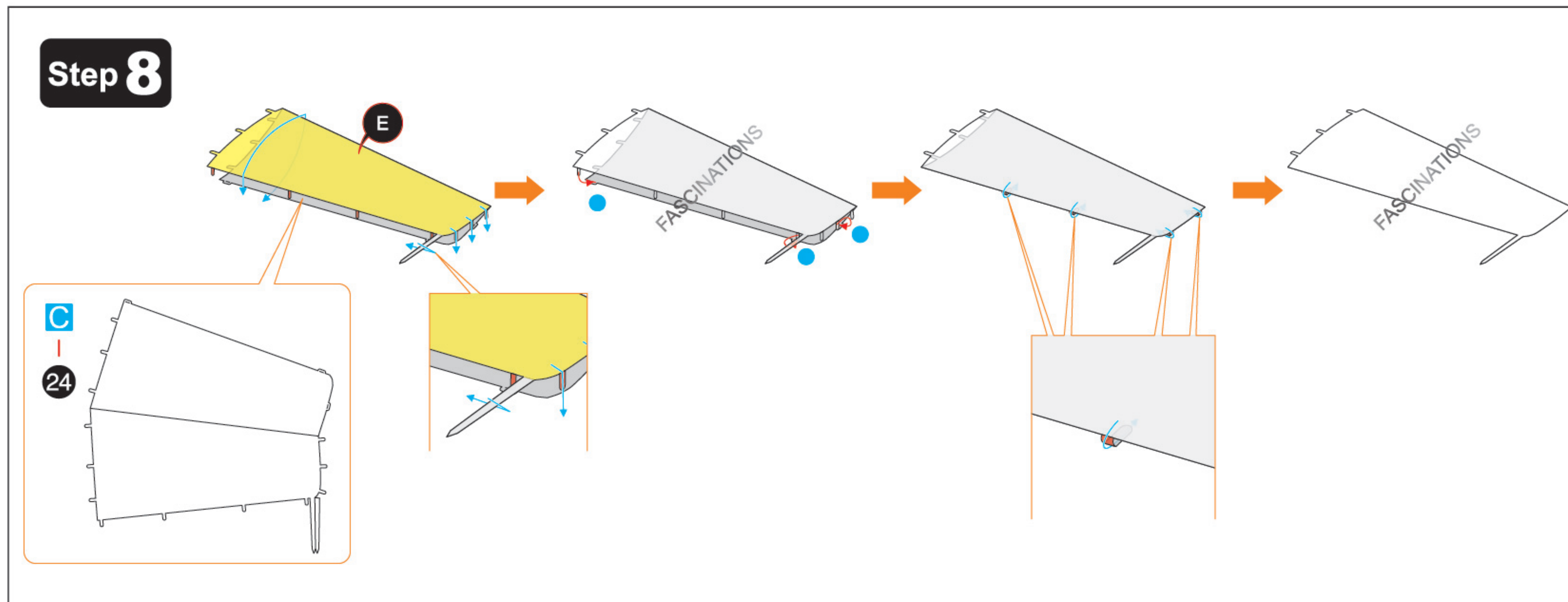
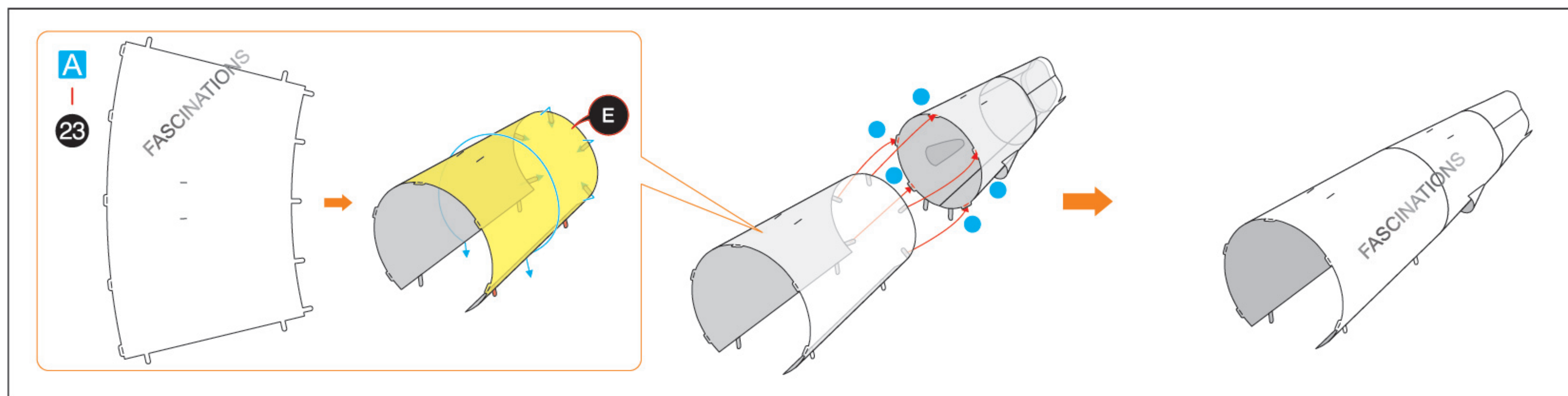
## Step 6



## Step 7

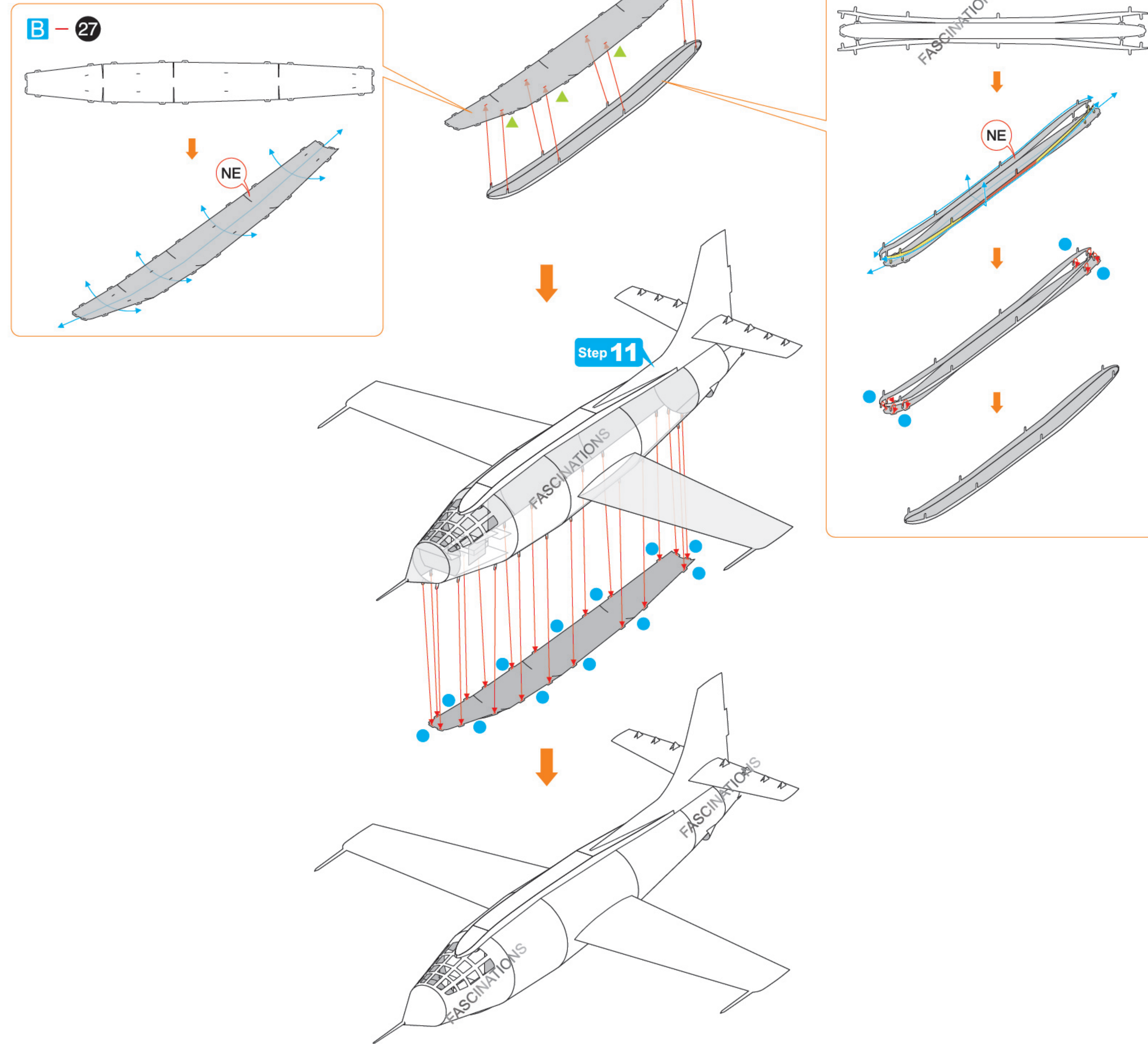




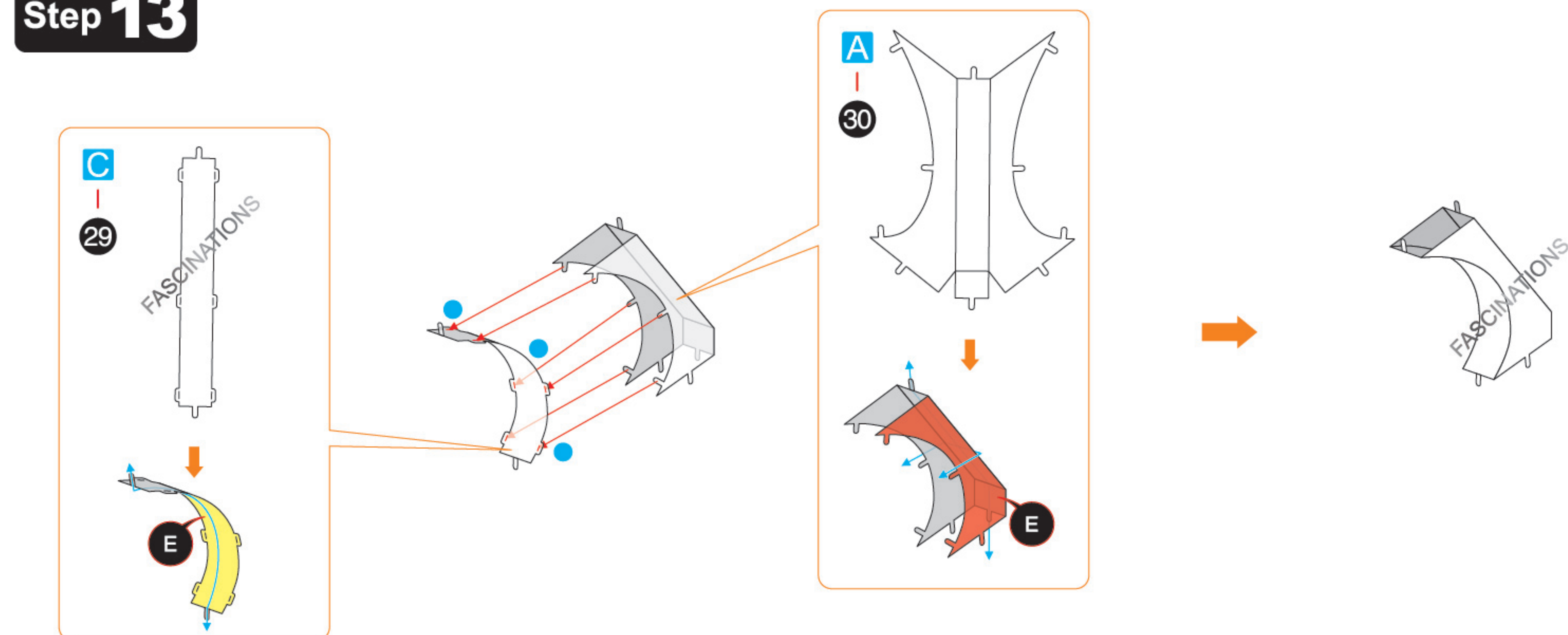




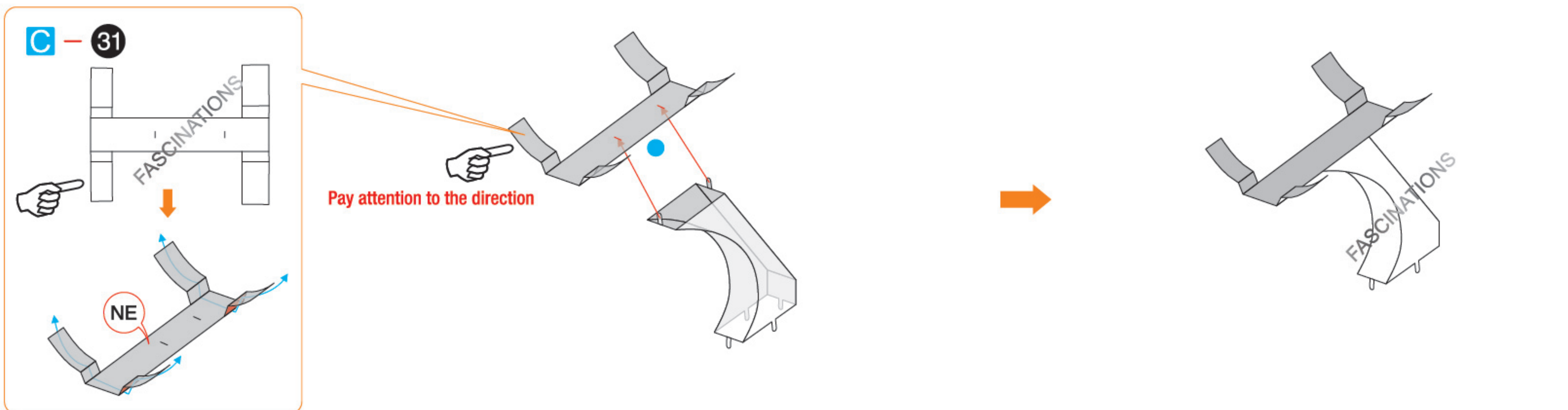
## Step 12



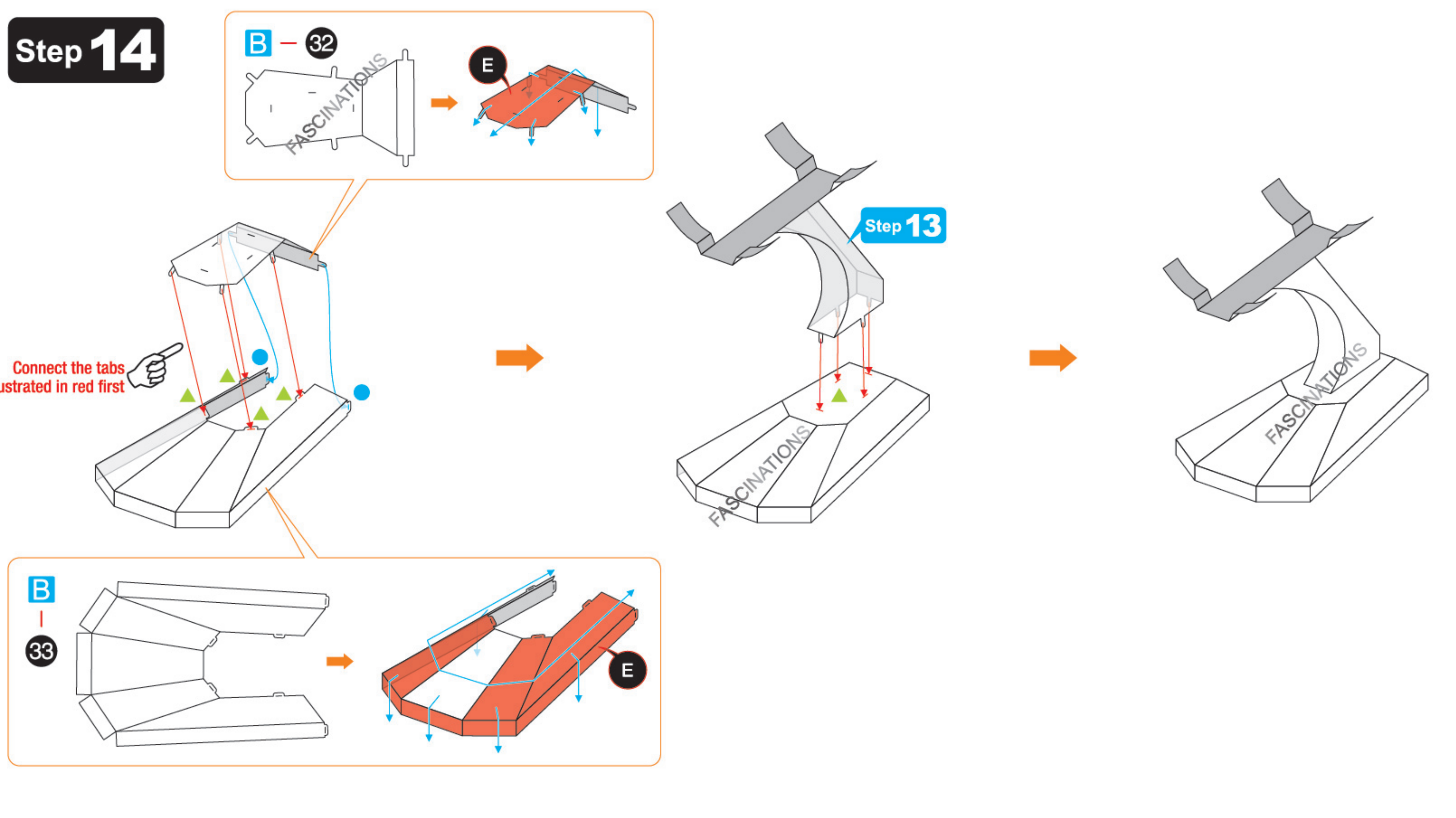
## Step 13



## Step 14



## Step 15



## Step 16

