

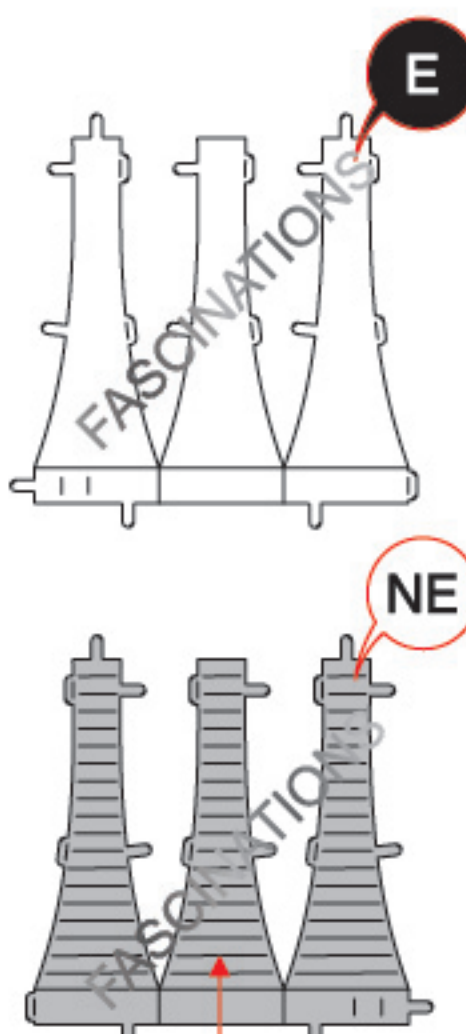
TRIWIZARD CUP™
ME1035



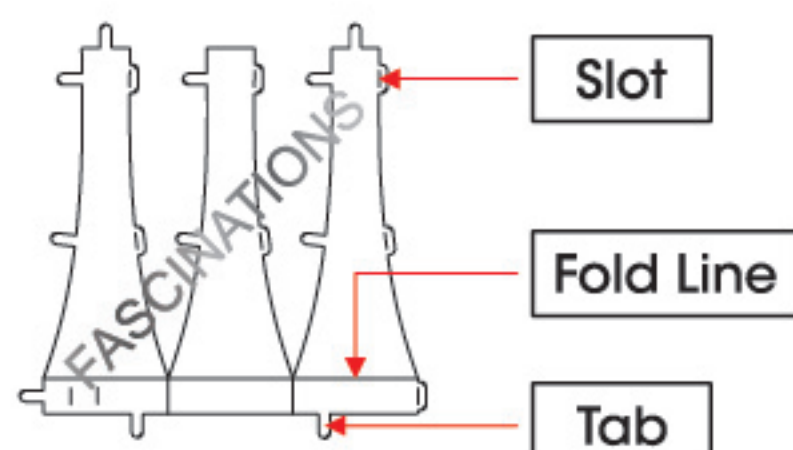
It is highly recommended that you visit
www.metalearth.com/360/ME1035
to see the completed model before assembling your own

TO CREATE THE BEST CONNECTIONS

A
10



Consider these engraved stripes as supporting features for the bend



Legends:

- E** Engraved
- NE** Non - engraved
- Attention point

- Insert tab and bend 90 degrees
- Insert tab and twist 90 degrees

Assembly tip:

If needed, slightly twist tabs to hold parts together then untwist and bend them down for a nice finish.

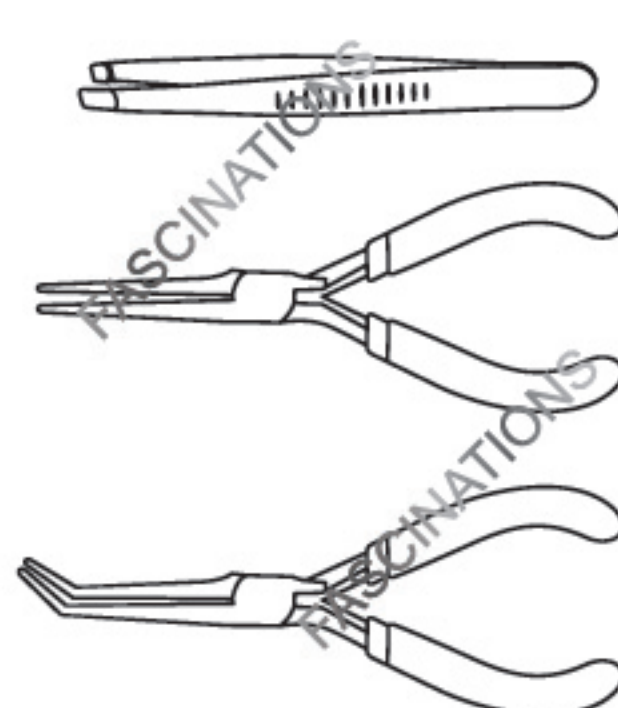
- Yellow areas should be curled
- Red areas should be folded

Recommended tools:

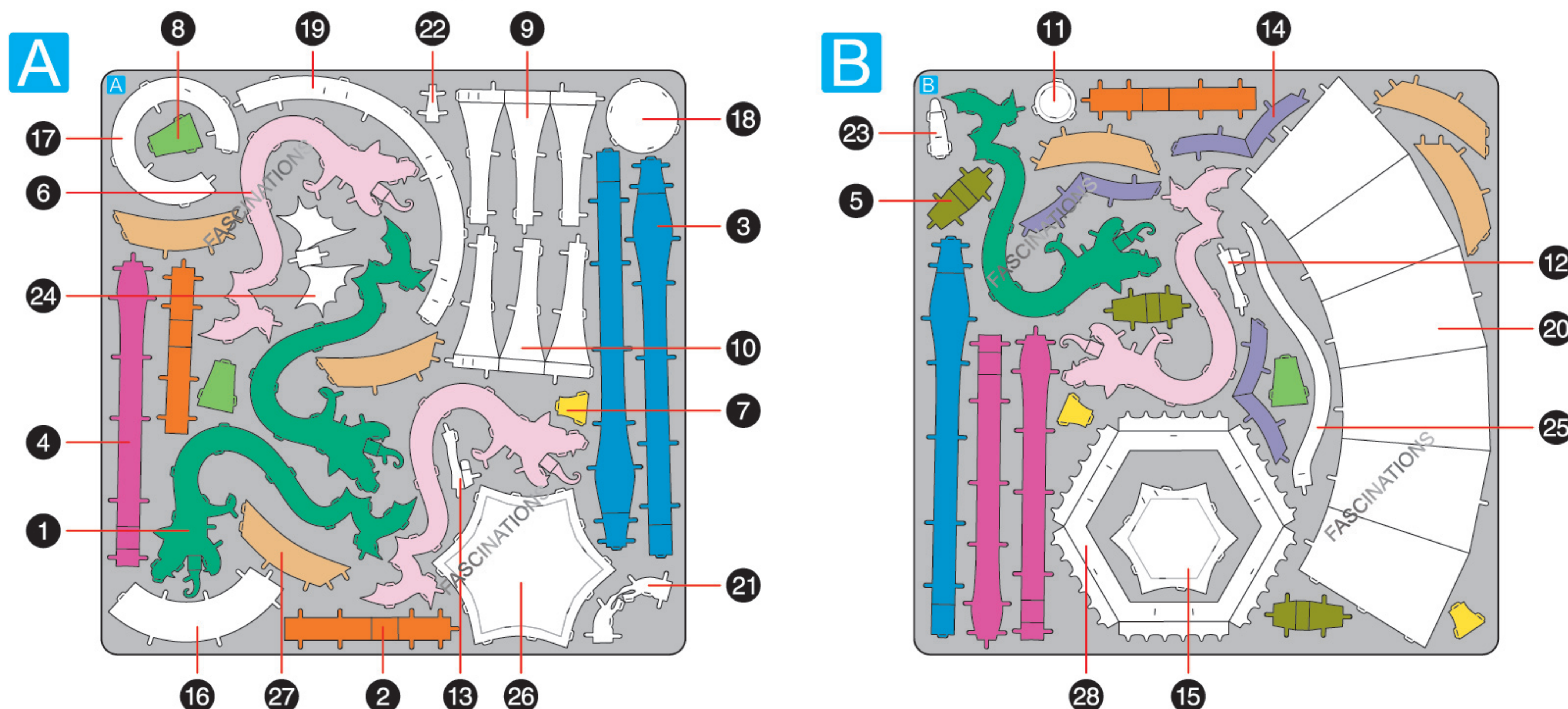
- Wire cutters: helpful for taking parts from the metal sheets.



- Tweezers or needle nose pliers: helpful for folding parts, bending and twisting tabs.



METAL SHEETS



In order to avoid possible injury from sharp edges, please carefully discard the metal sheets after parts have been removed.

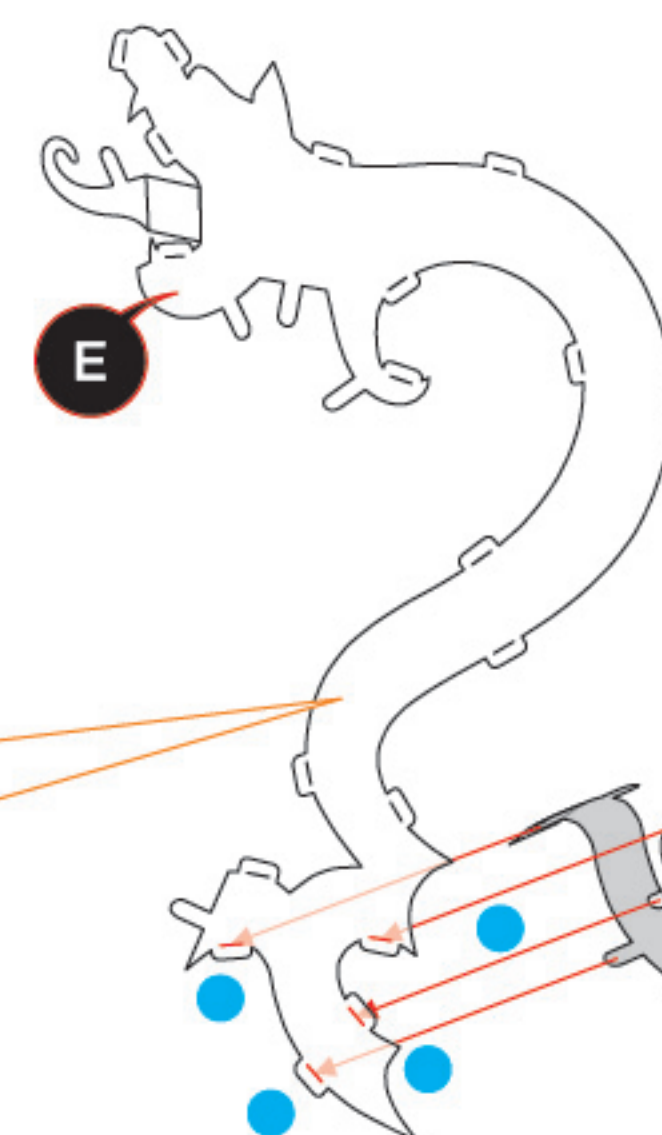


Go to www.metalearth.com/360/ME1035 to see the zoomable PDF version of this instruction sheet

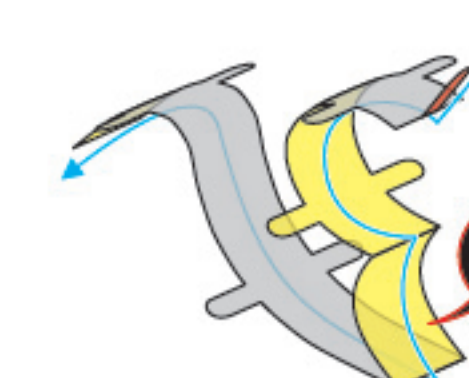
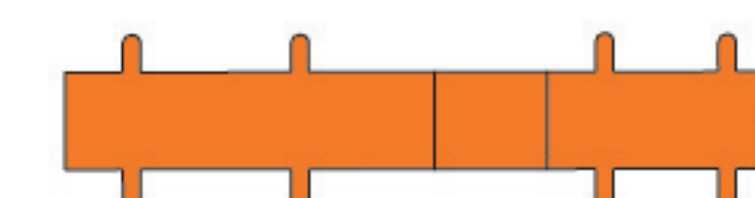
ASSEMBLY FLOW CHART

Step 1

AB - 1



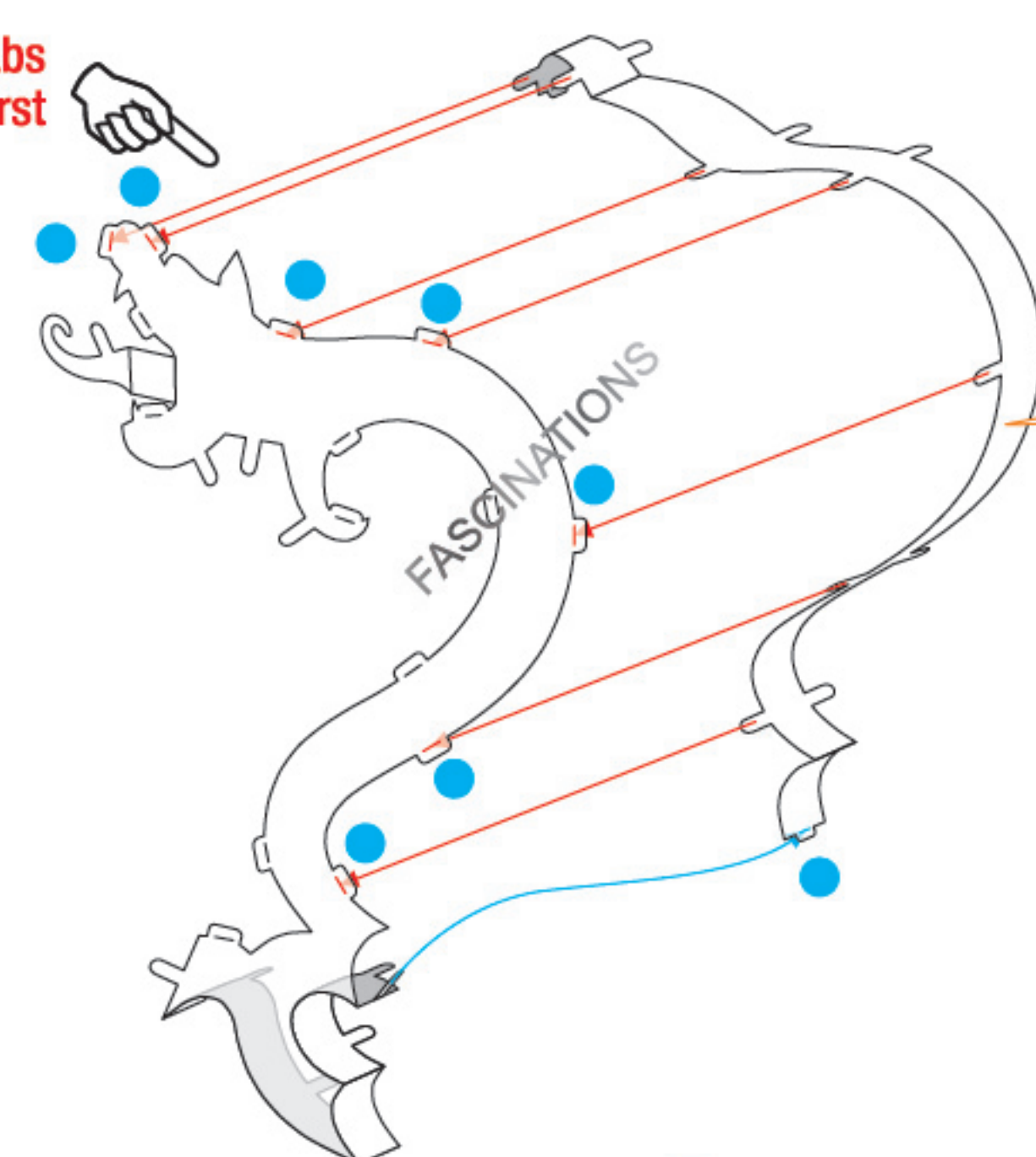
AB - 2



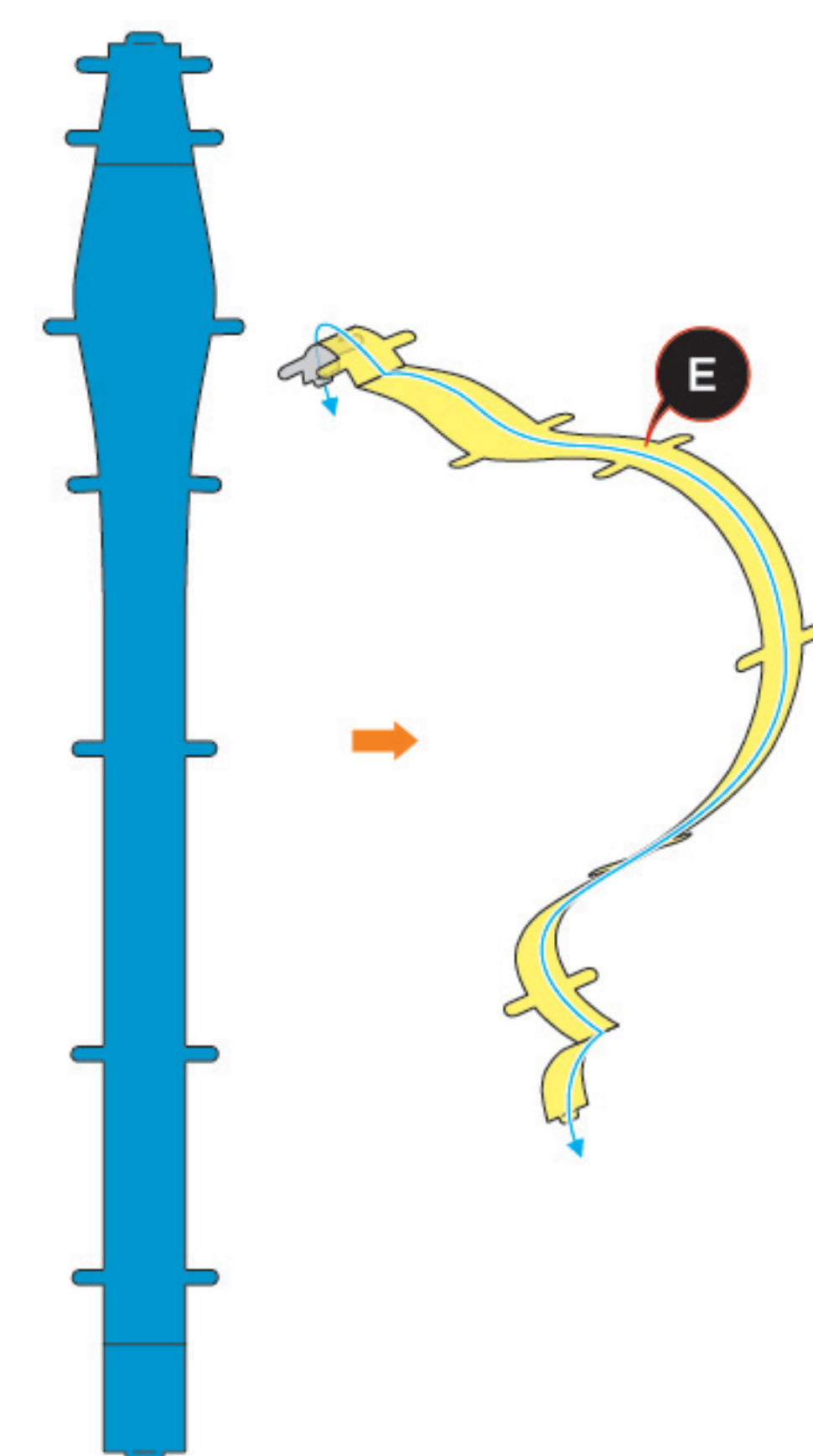
Bend to align with the shape of **AB - 1**



Connect the tabs illustrated in red first



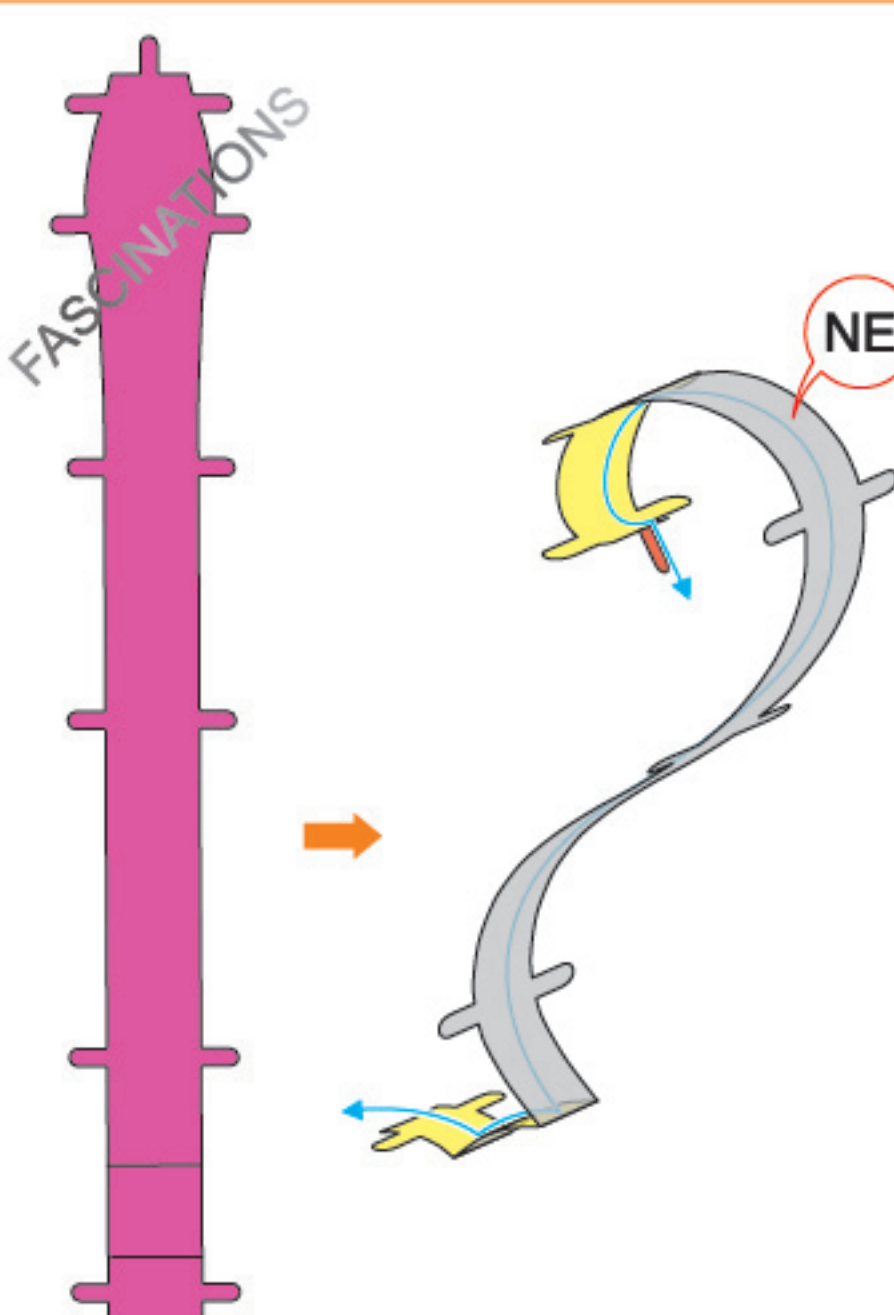
AB - 3



Bend to align with the shape of **AB - 1**

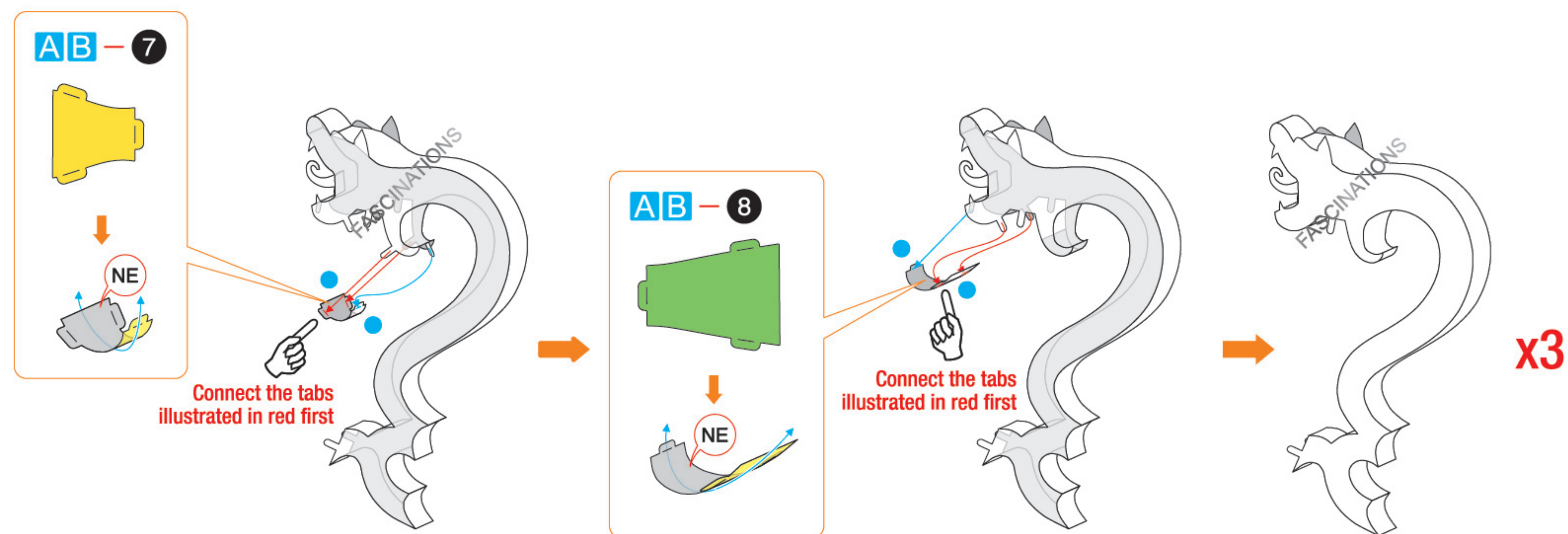
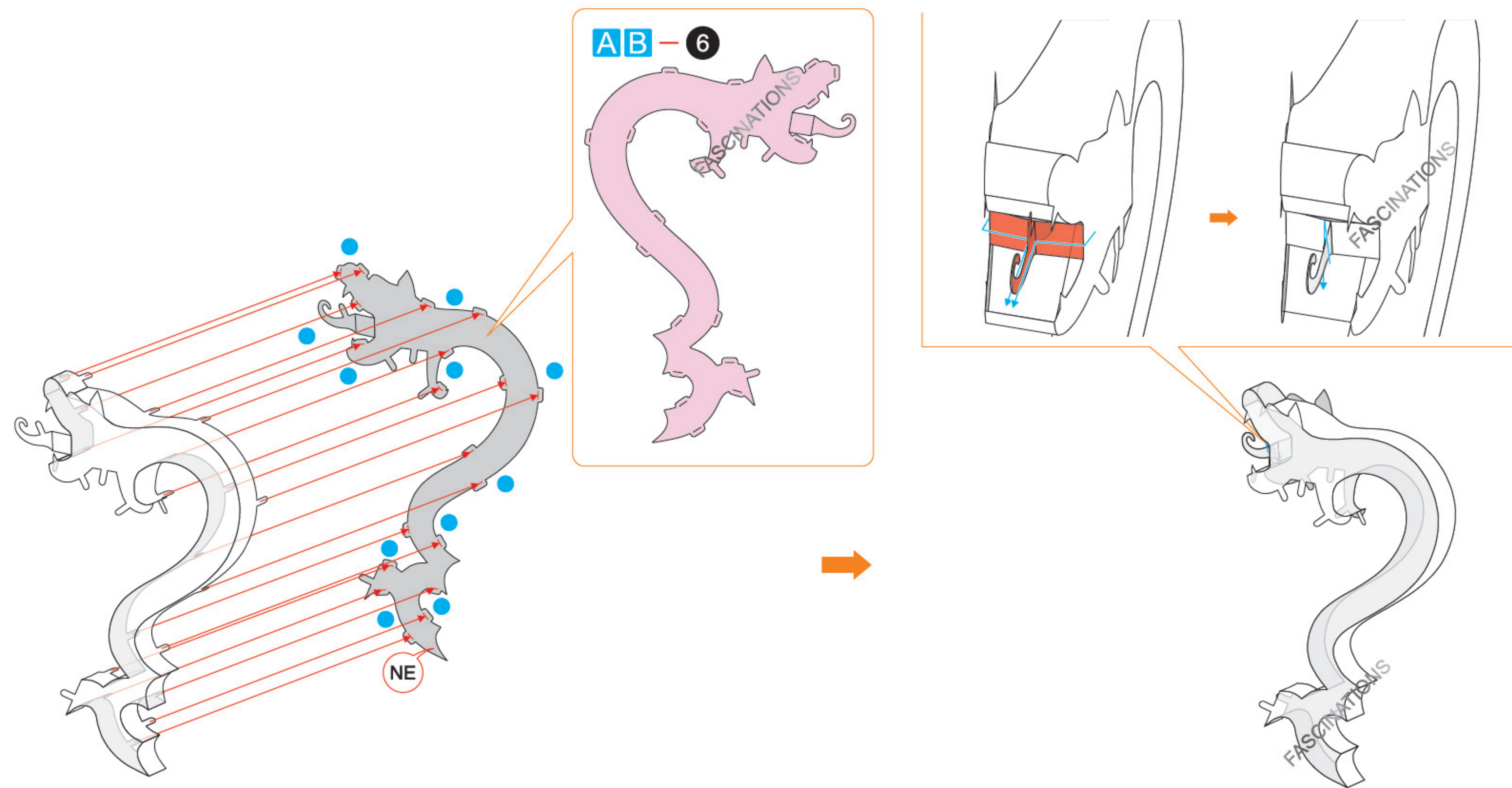
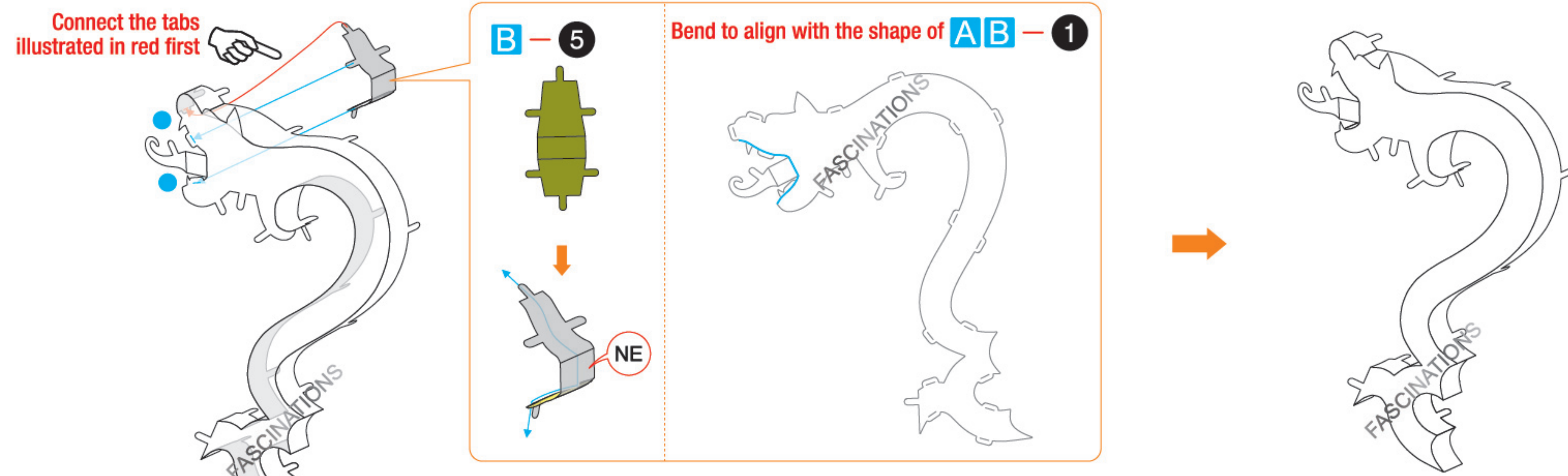


AB - 4

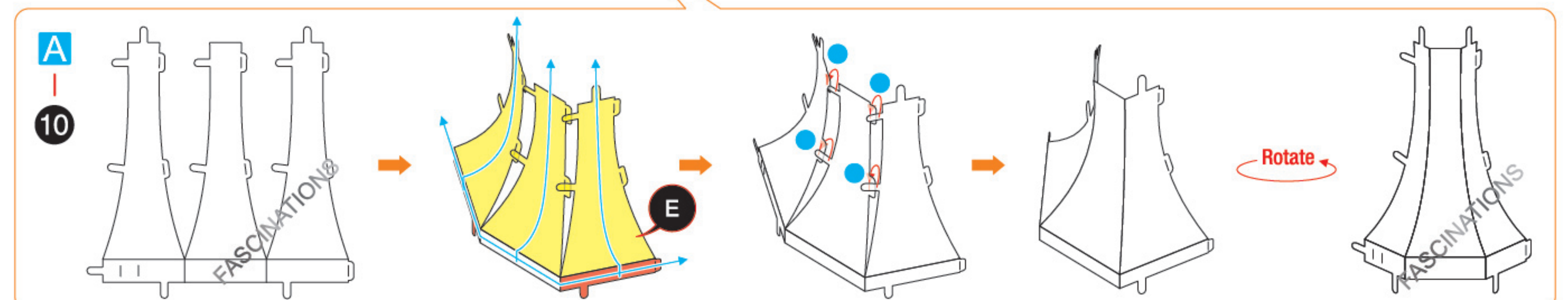
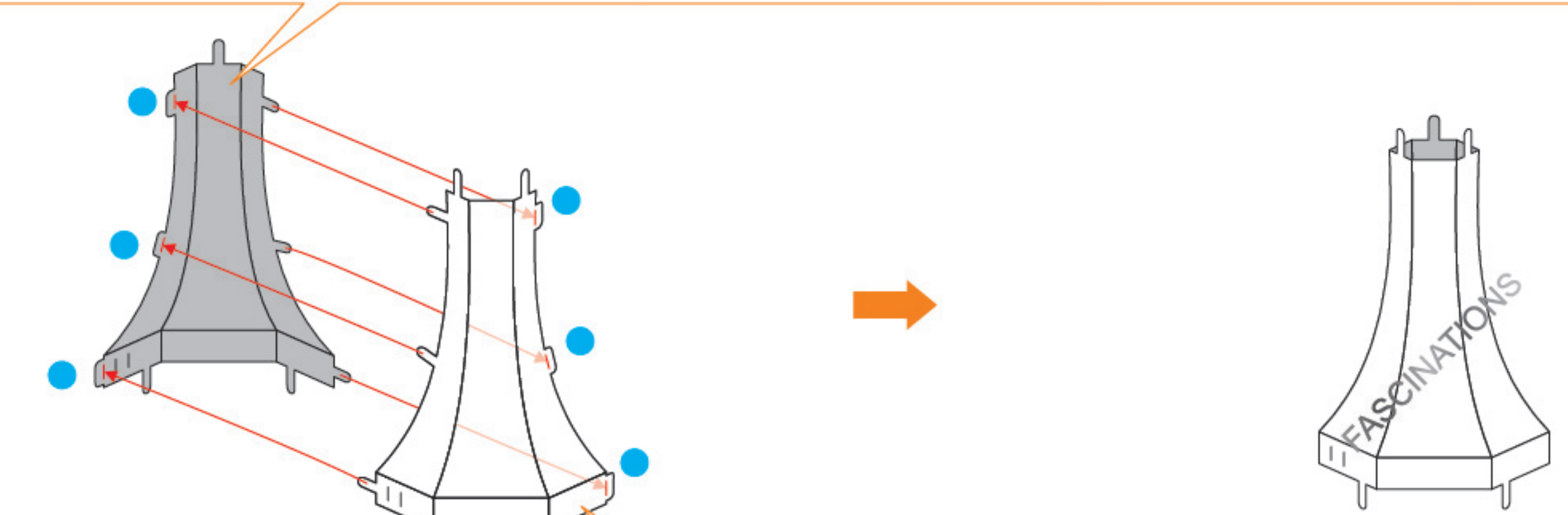
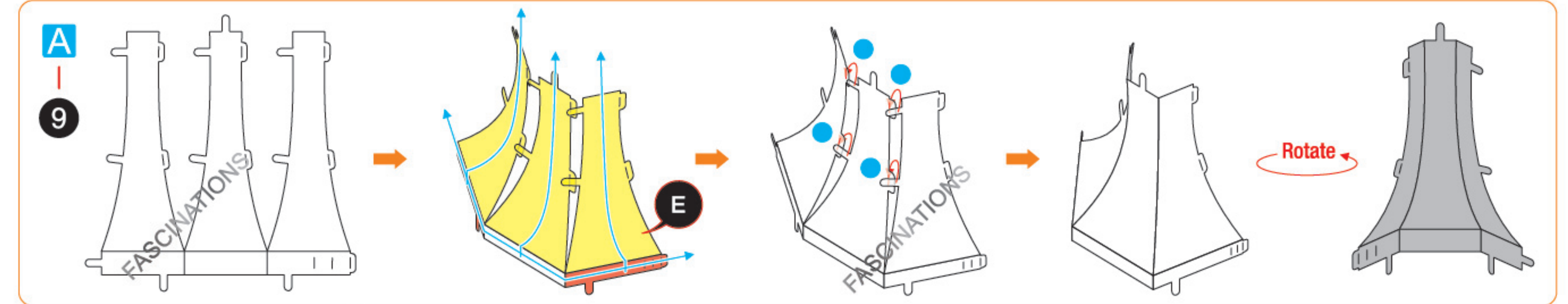


Bend to align with the shape of **AB - 1**

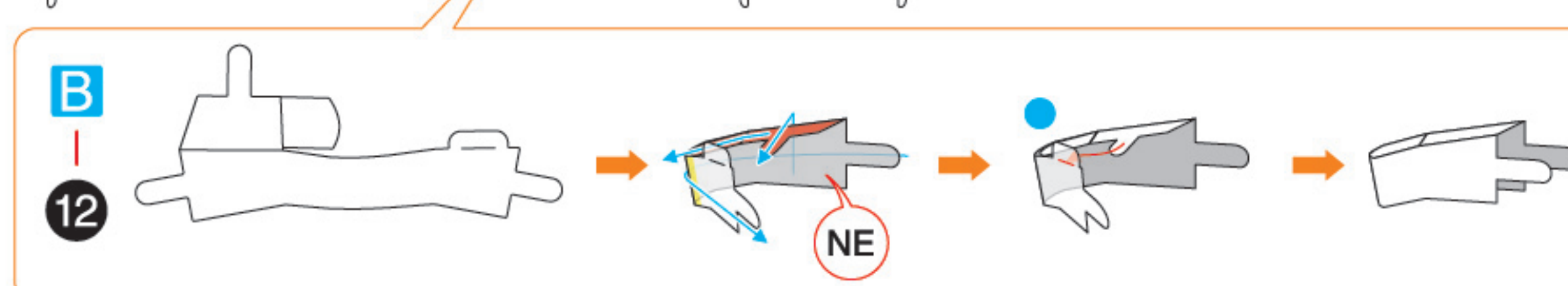
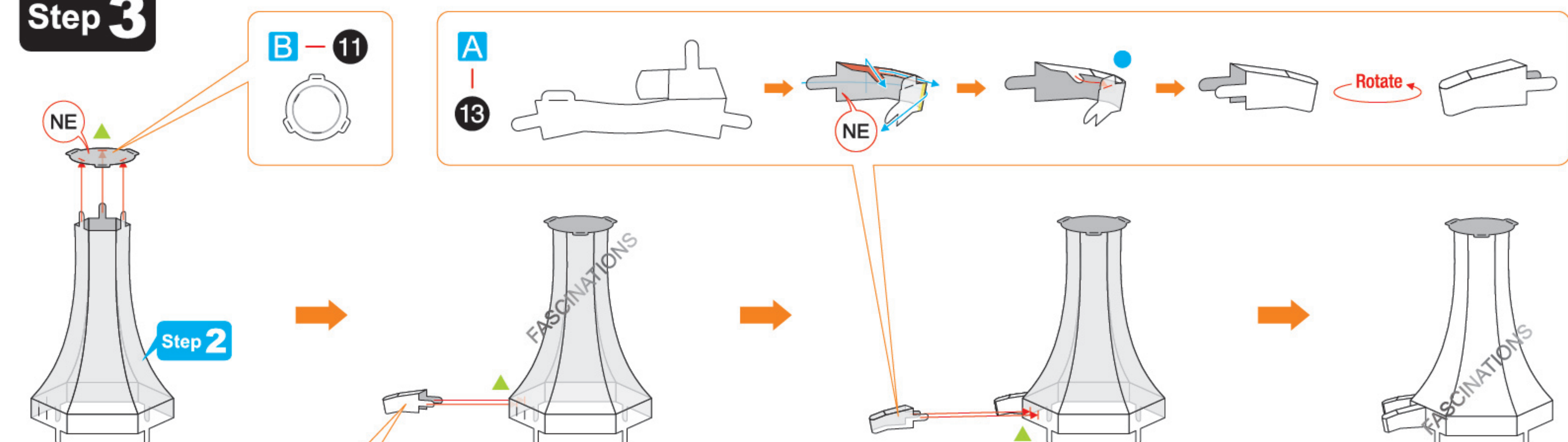




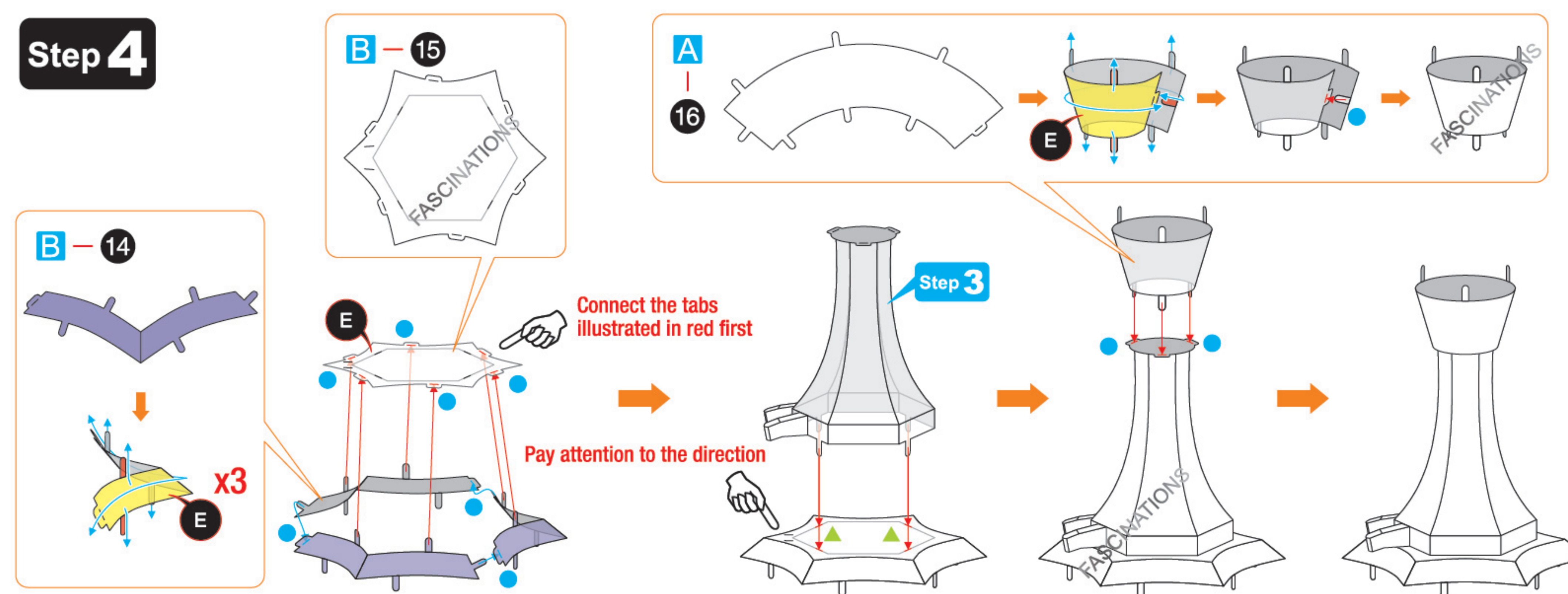
Step 2



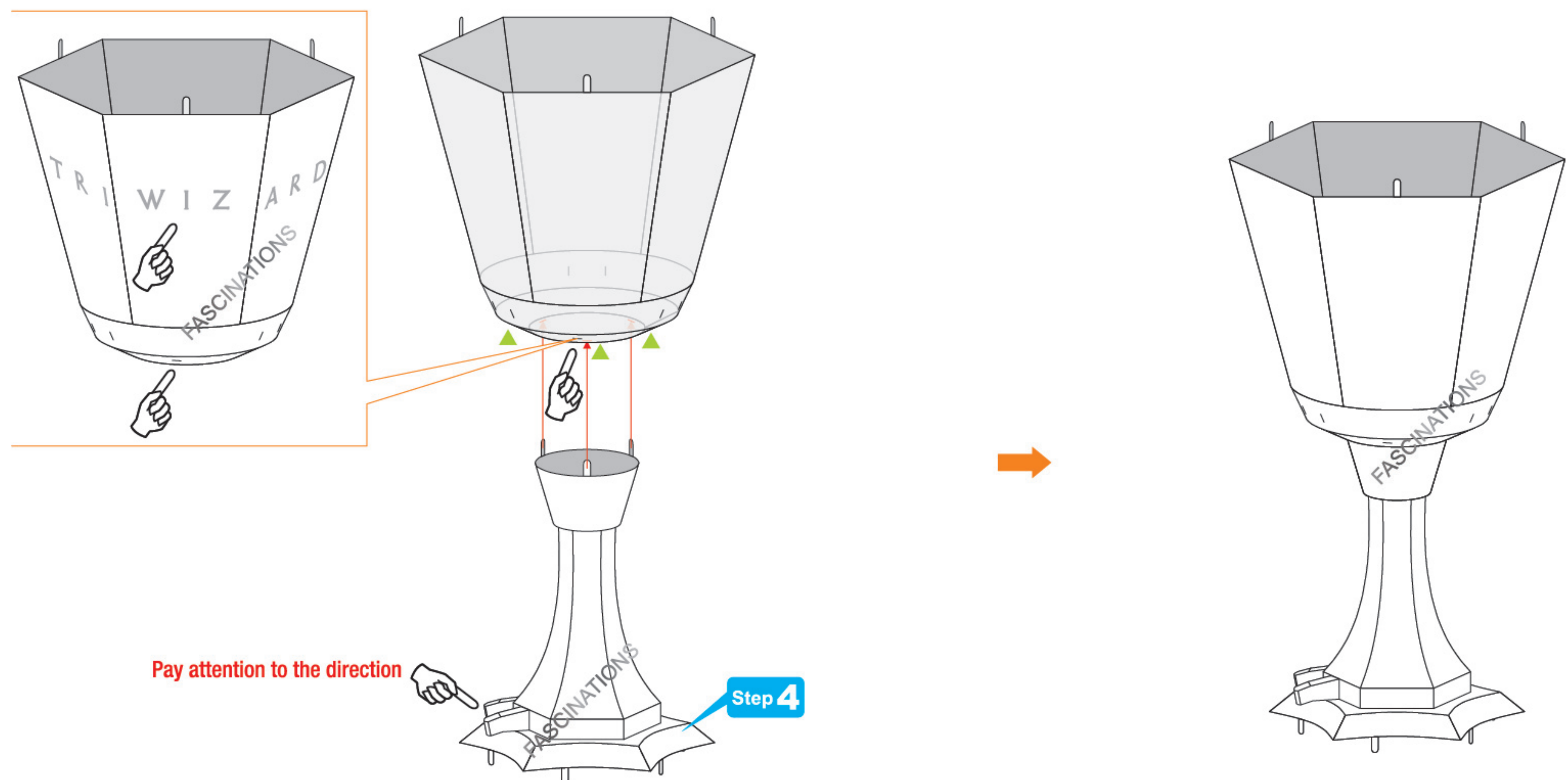
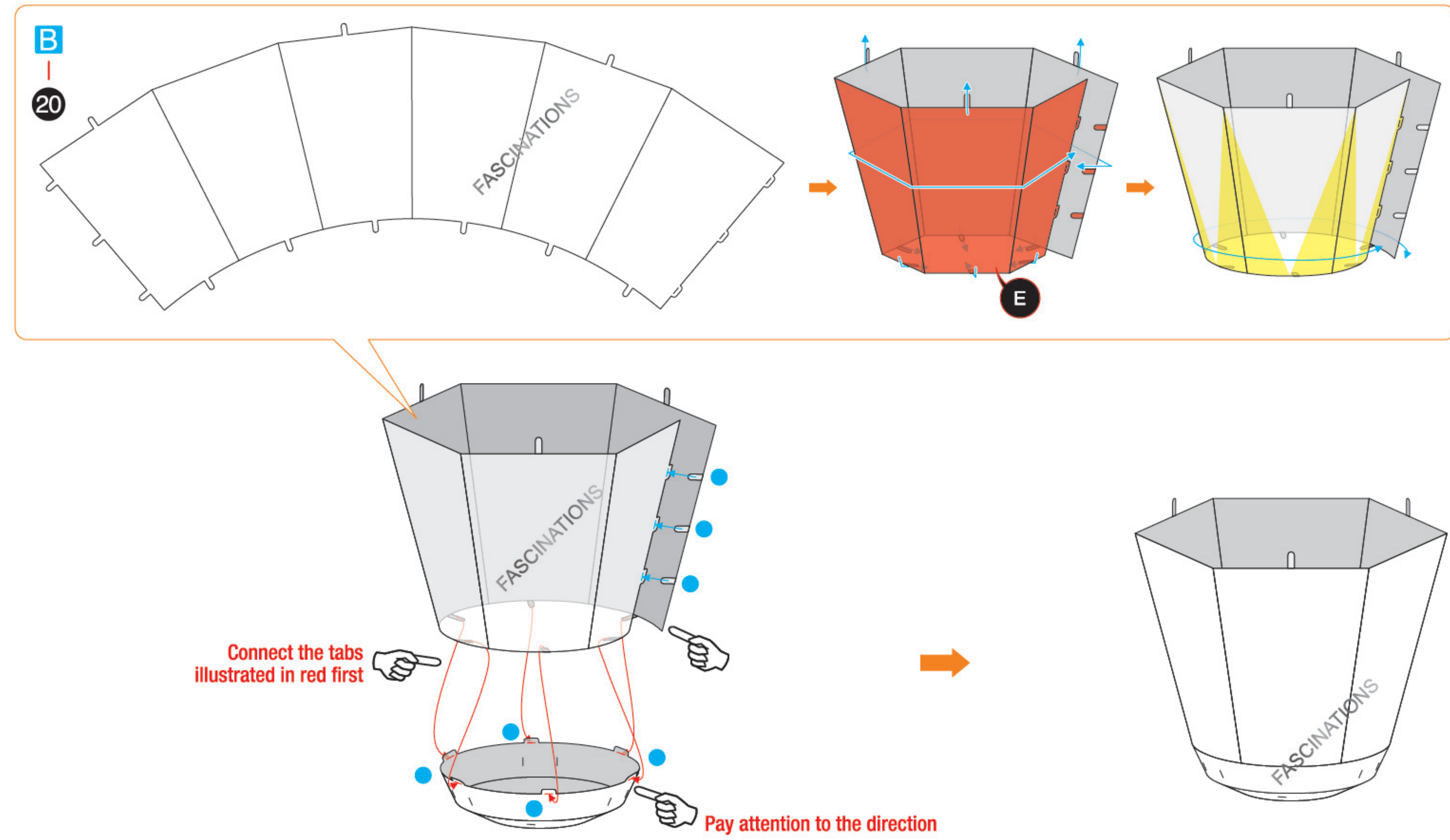
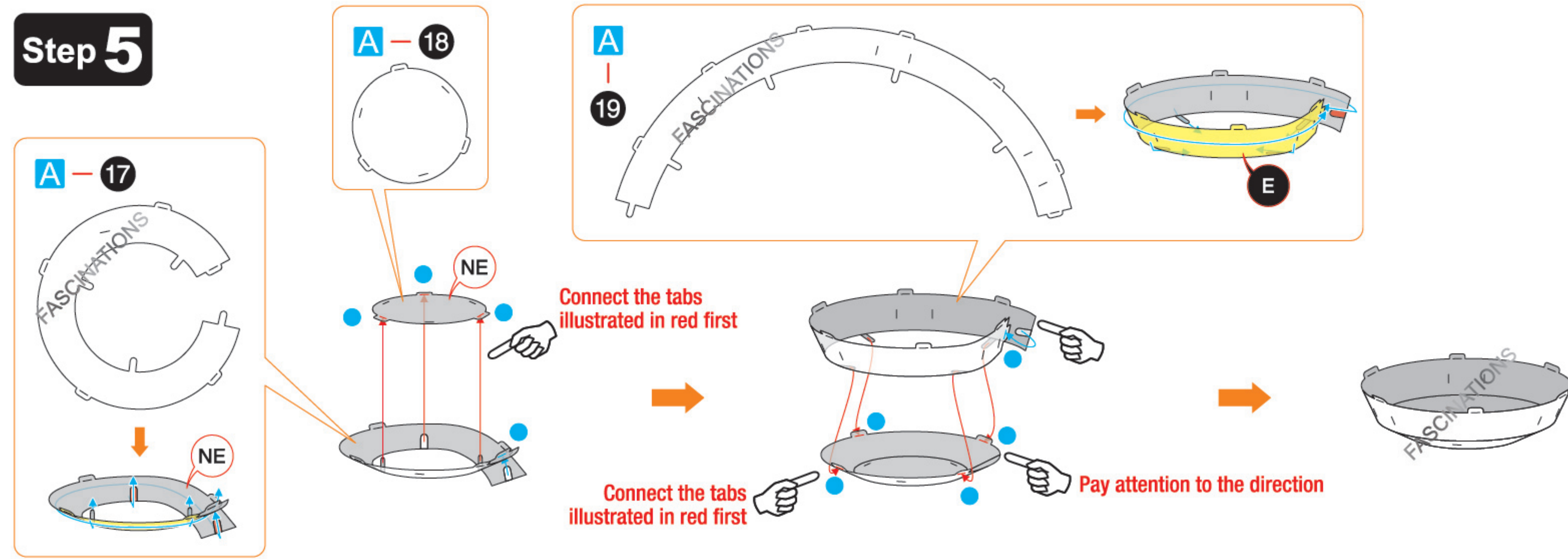
Step 3



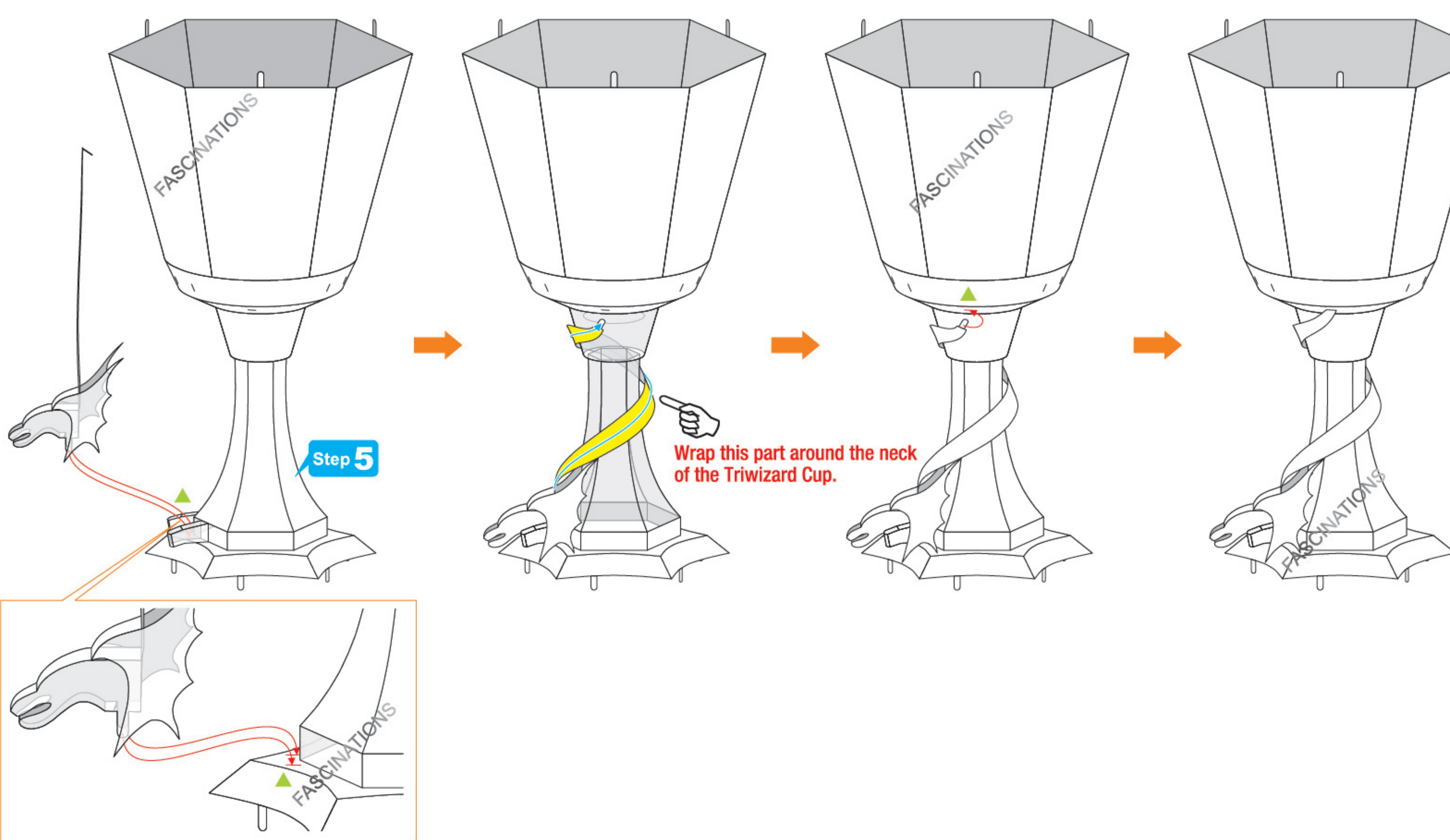
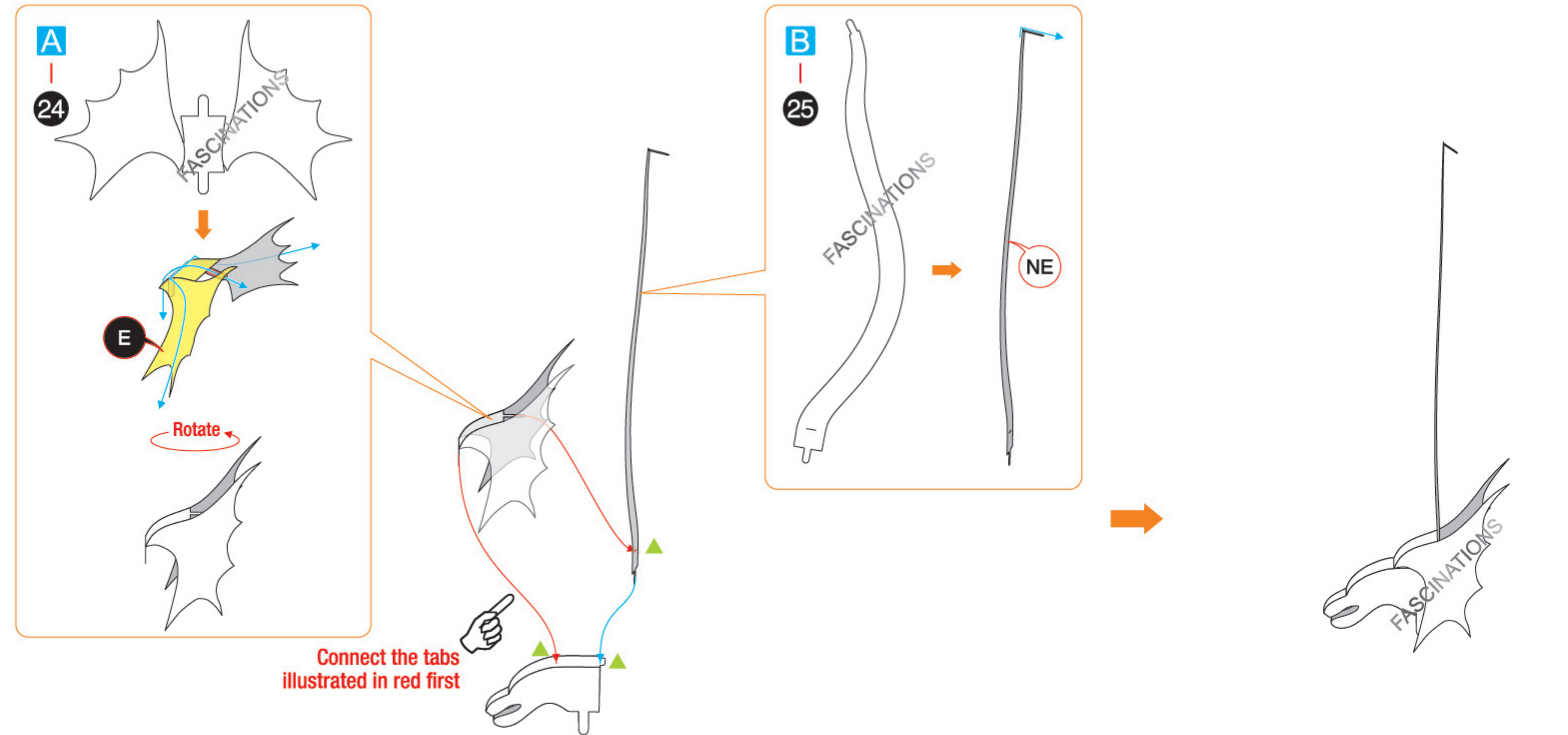
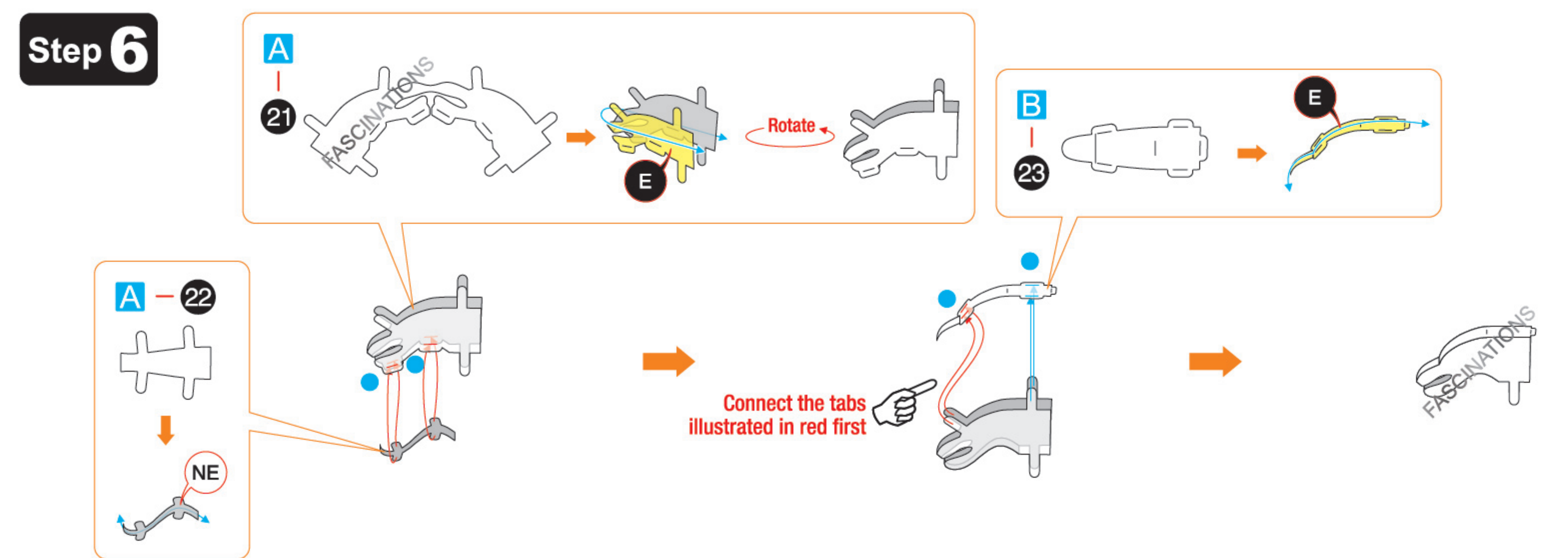
Step 4



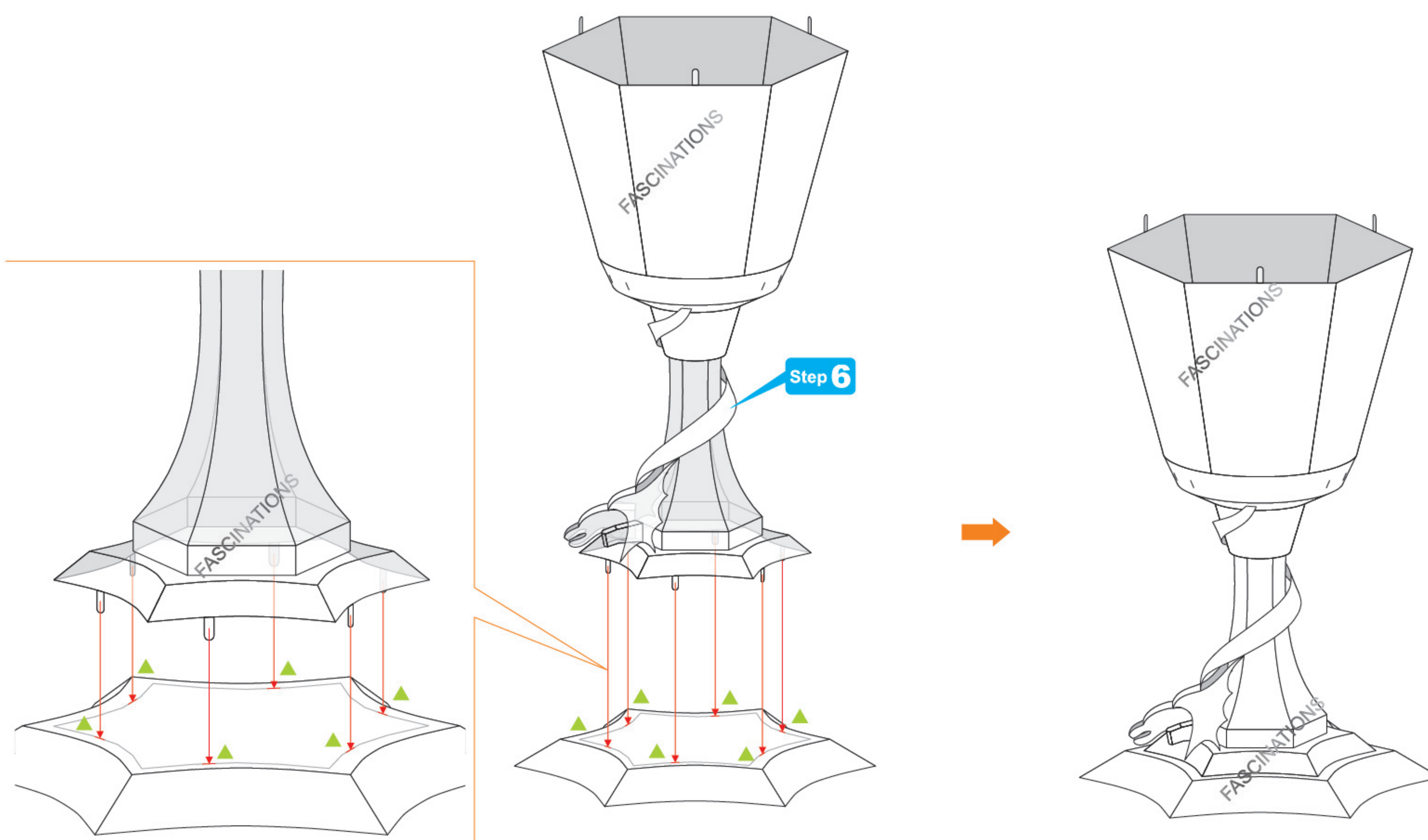
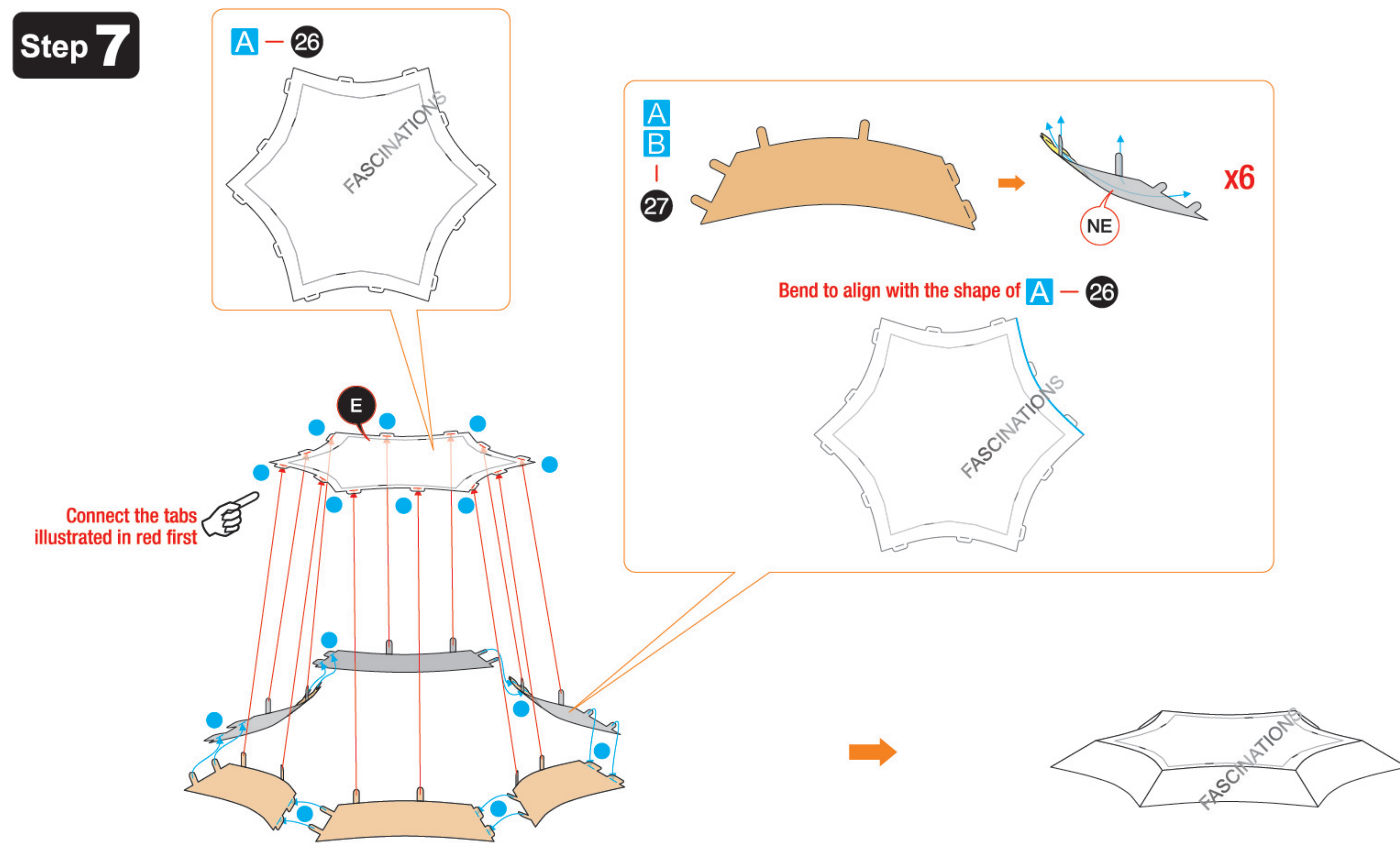
Step 5



Step 6



Step 7



Step 8

