

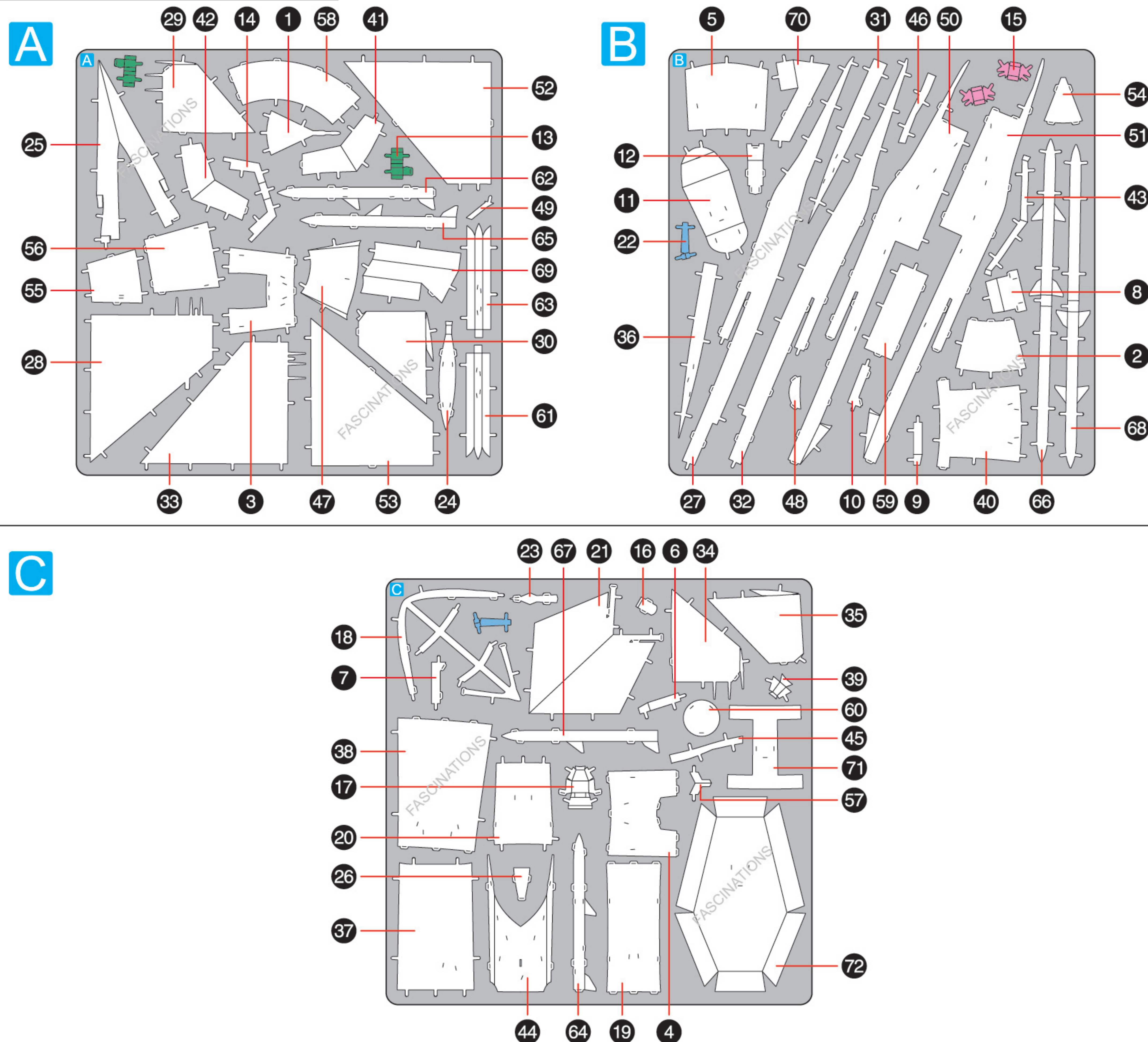
F-16 FIGHTING FALCON® ME1046



360°
view

It is highly recommended that you visit
www.metal-earth.com/360/ME1046
to see the completed model before assembling your own

METAL SHEETS



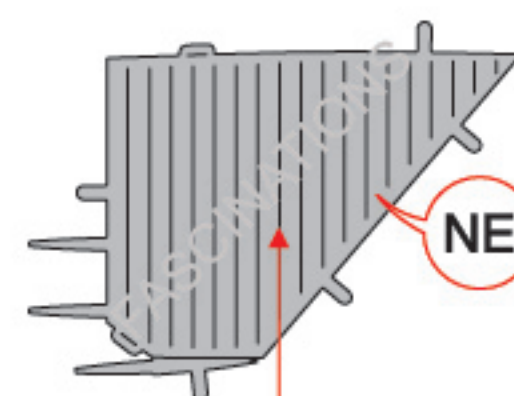
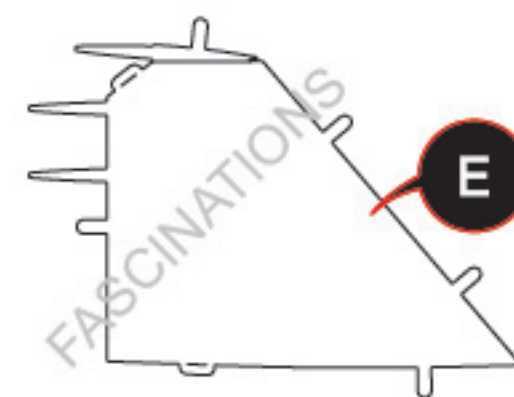
In order to avoid possible injury from sharp edges, please carefully discard the metal sheets after parts have been removed.



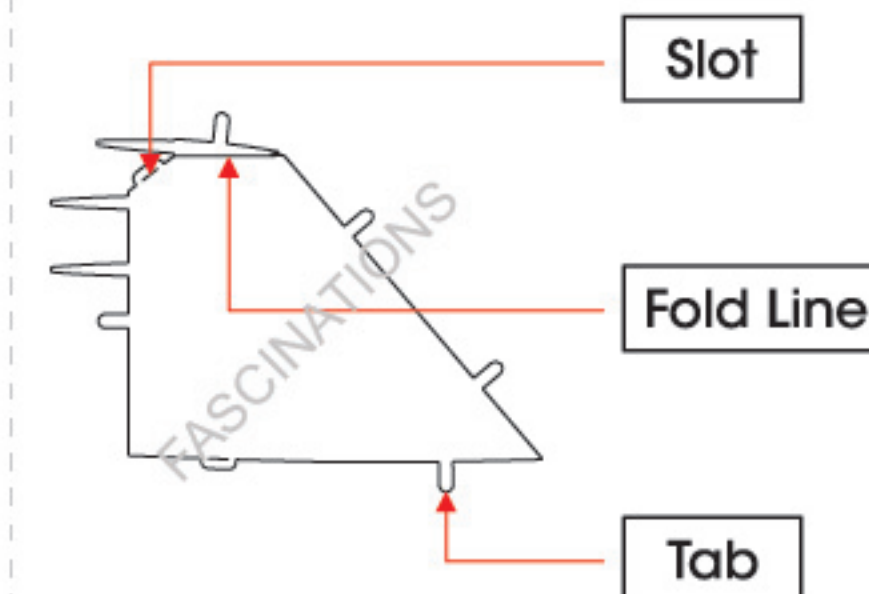
Go to www.metal-earth.com/360/ME1046 to see the zoomable PDF version of this instruction sheet

TO CREATE THE BEST CONNECTIONS

A - 29



Consider these engraved stripes as supporting features for the bend



Legends:

- E** Engraved / Color side
- NE** Non - engraved / Silver side
- Attention point
- Insert tab and bend 90 degrees
- Insert tab and twist 90 degrees

Assembly tip:

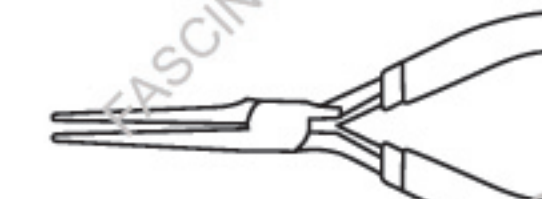
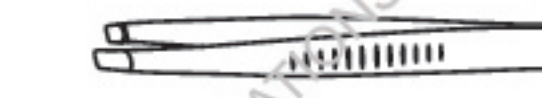
If needed, slightly twist tabs to hold parts together then untwist and bend them down for a nice finish.

- Yellow areas should be curled
- Red areas should be folded

Recommended tools:

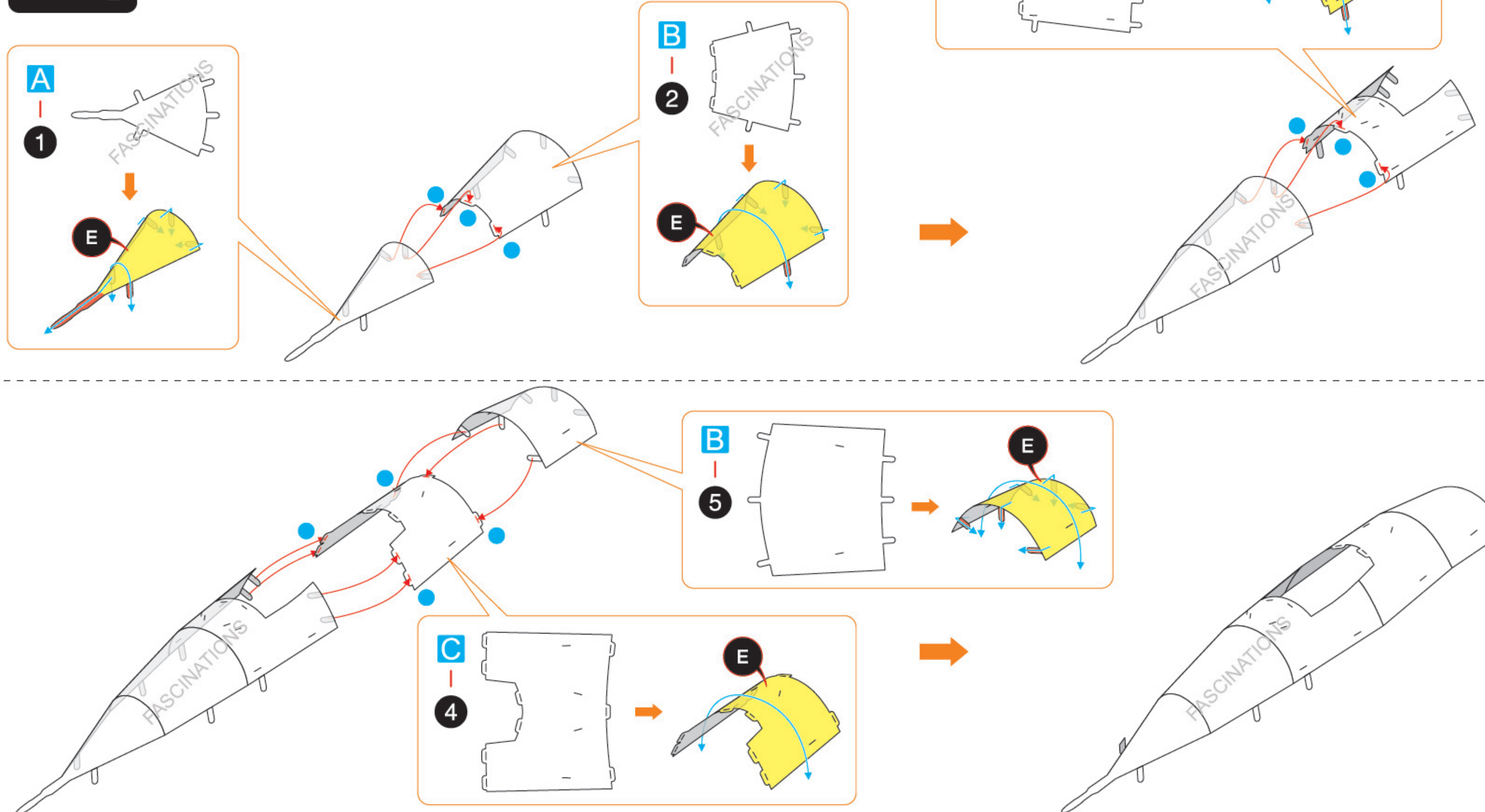
- Wire cutters: helpful for taking parts from the metal sheets.

- Tweezers or needle nose pliers: helpful for folding parts, bending and twisting tabs.

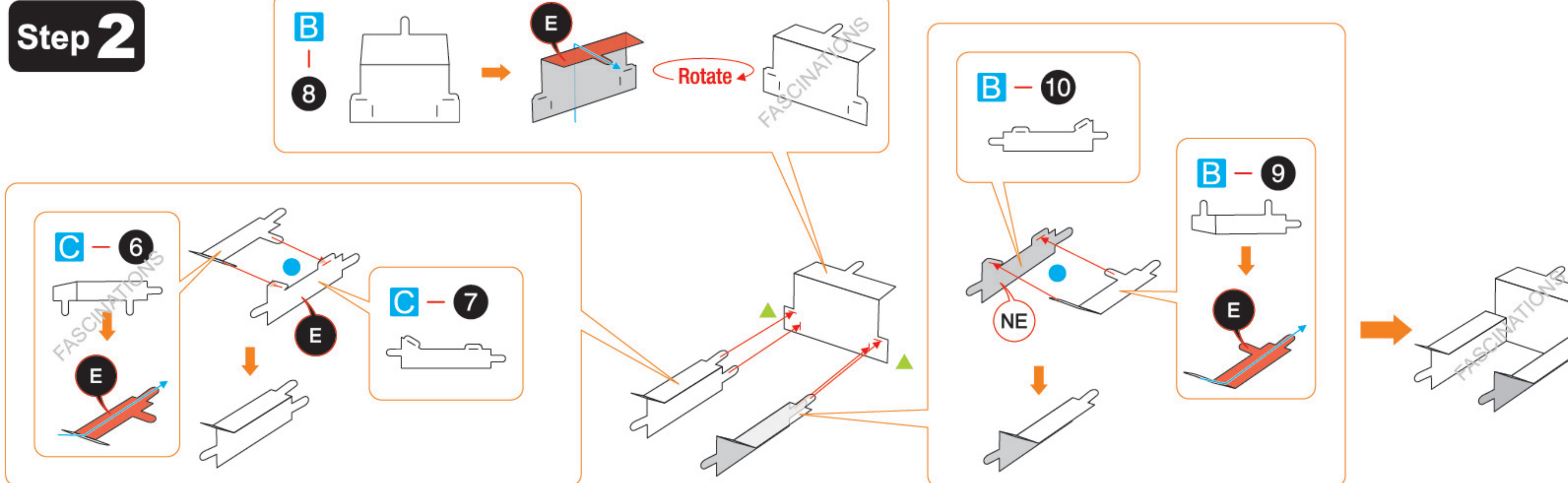


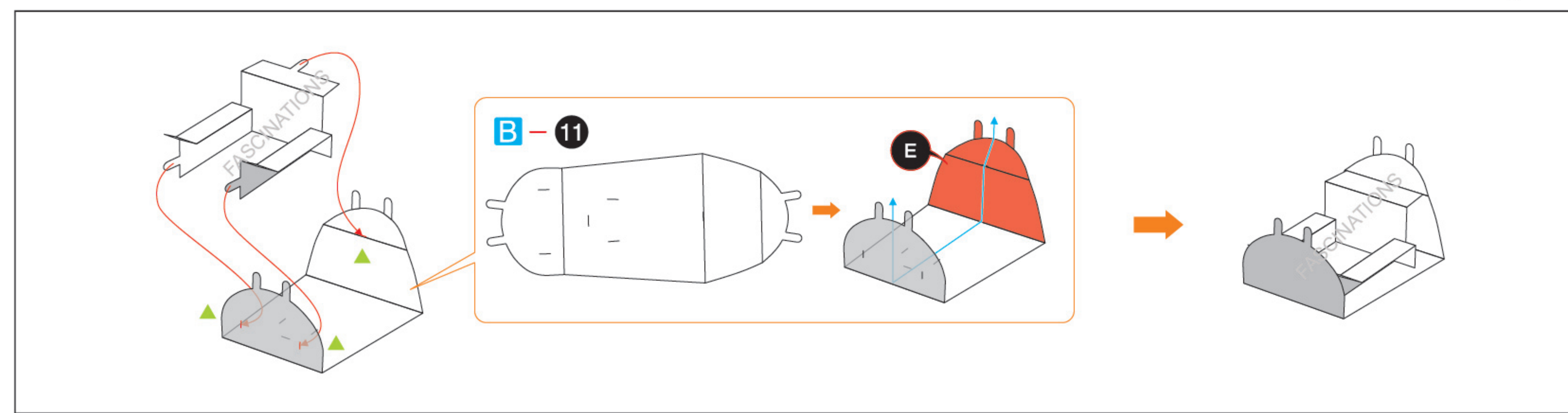
ASSEMBLY FLOW CHART

Step 1

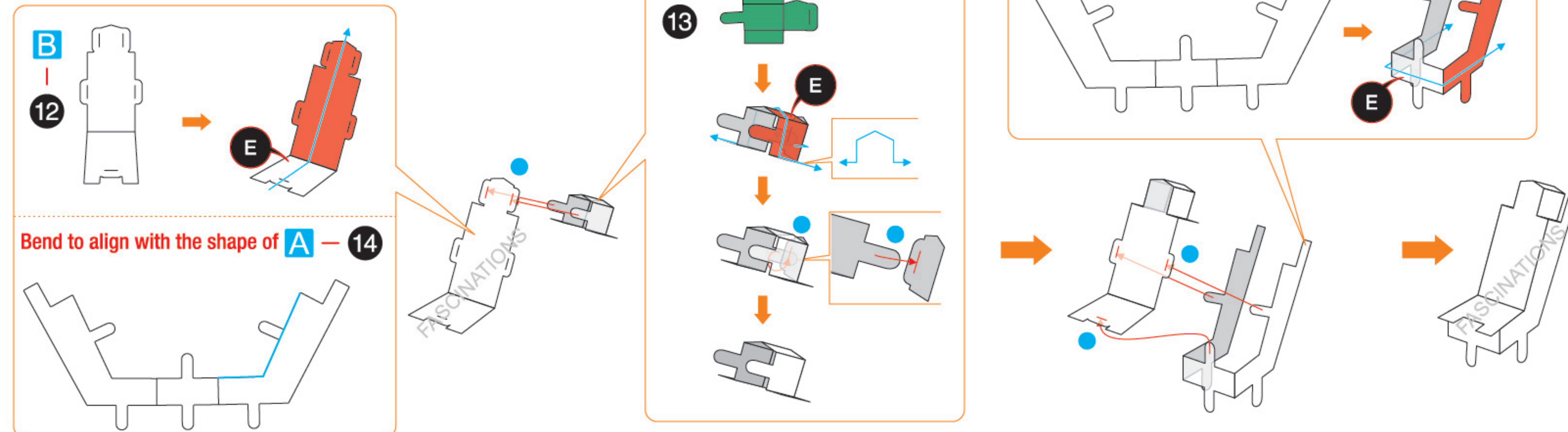


Step 2

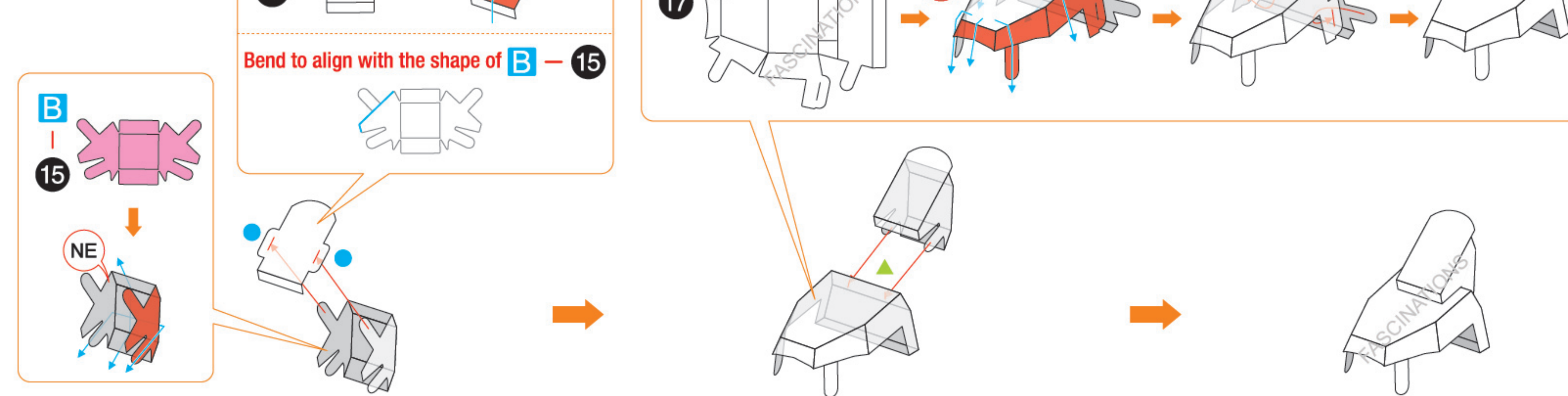




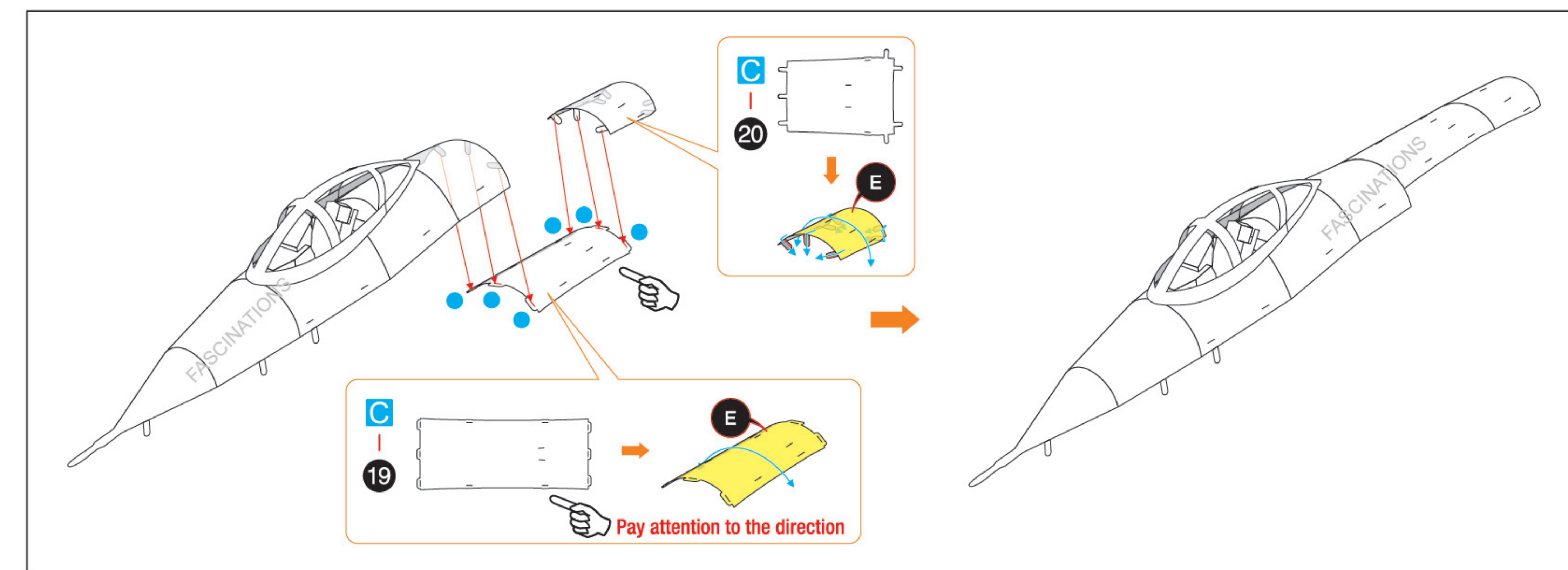
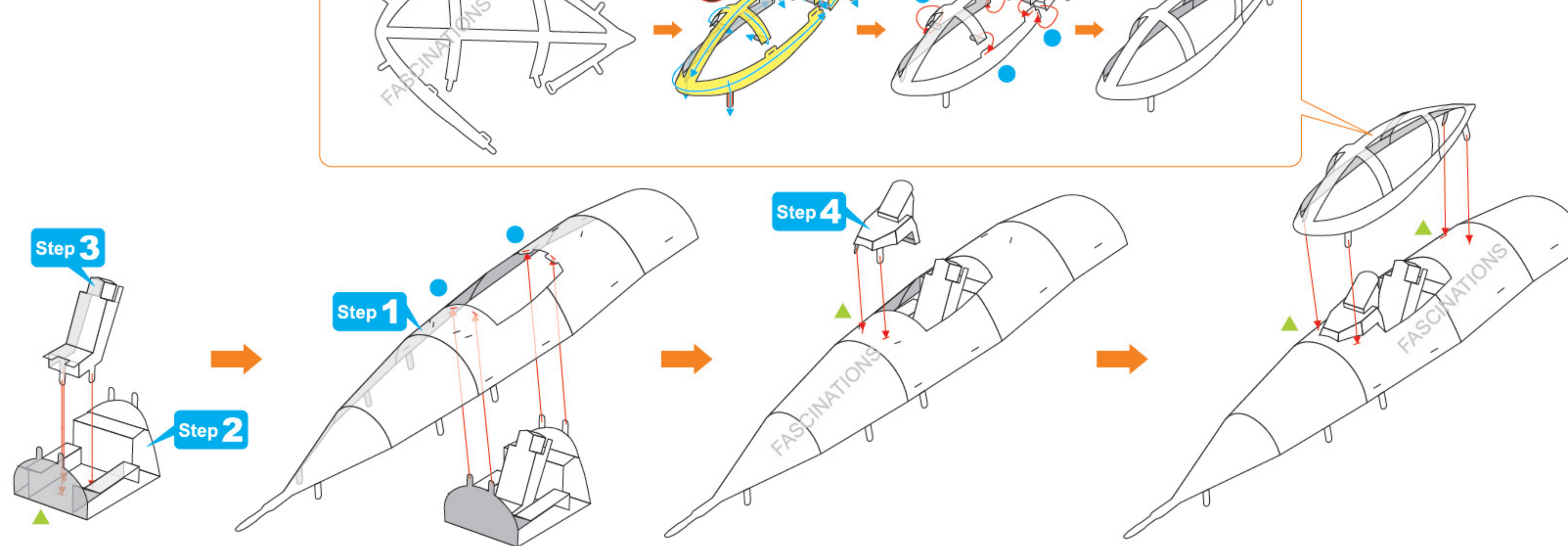
Step 3



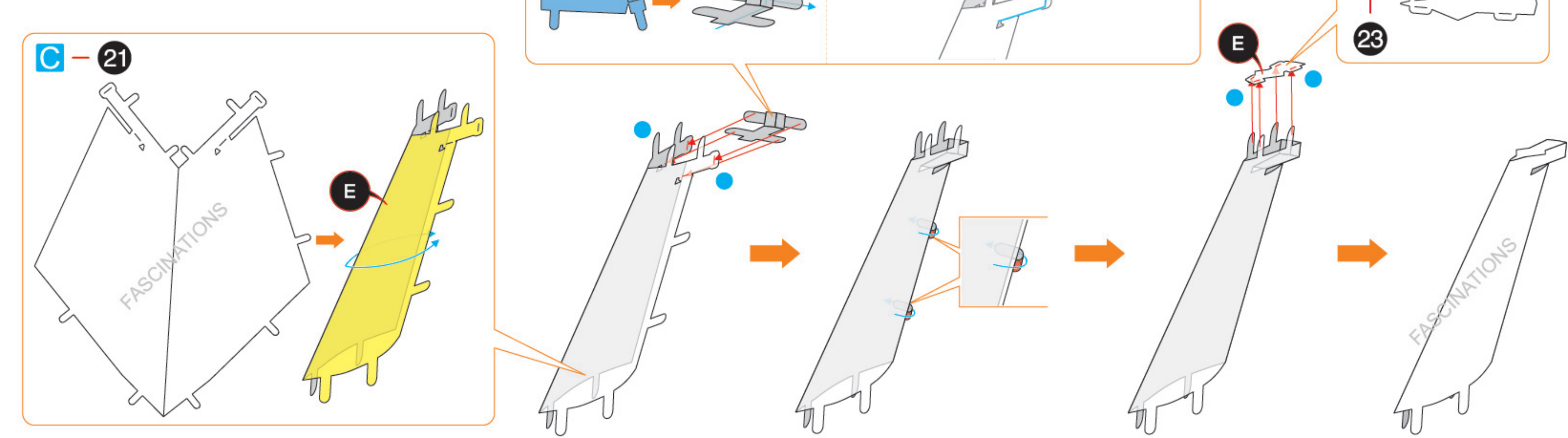
Step 4



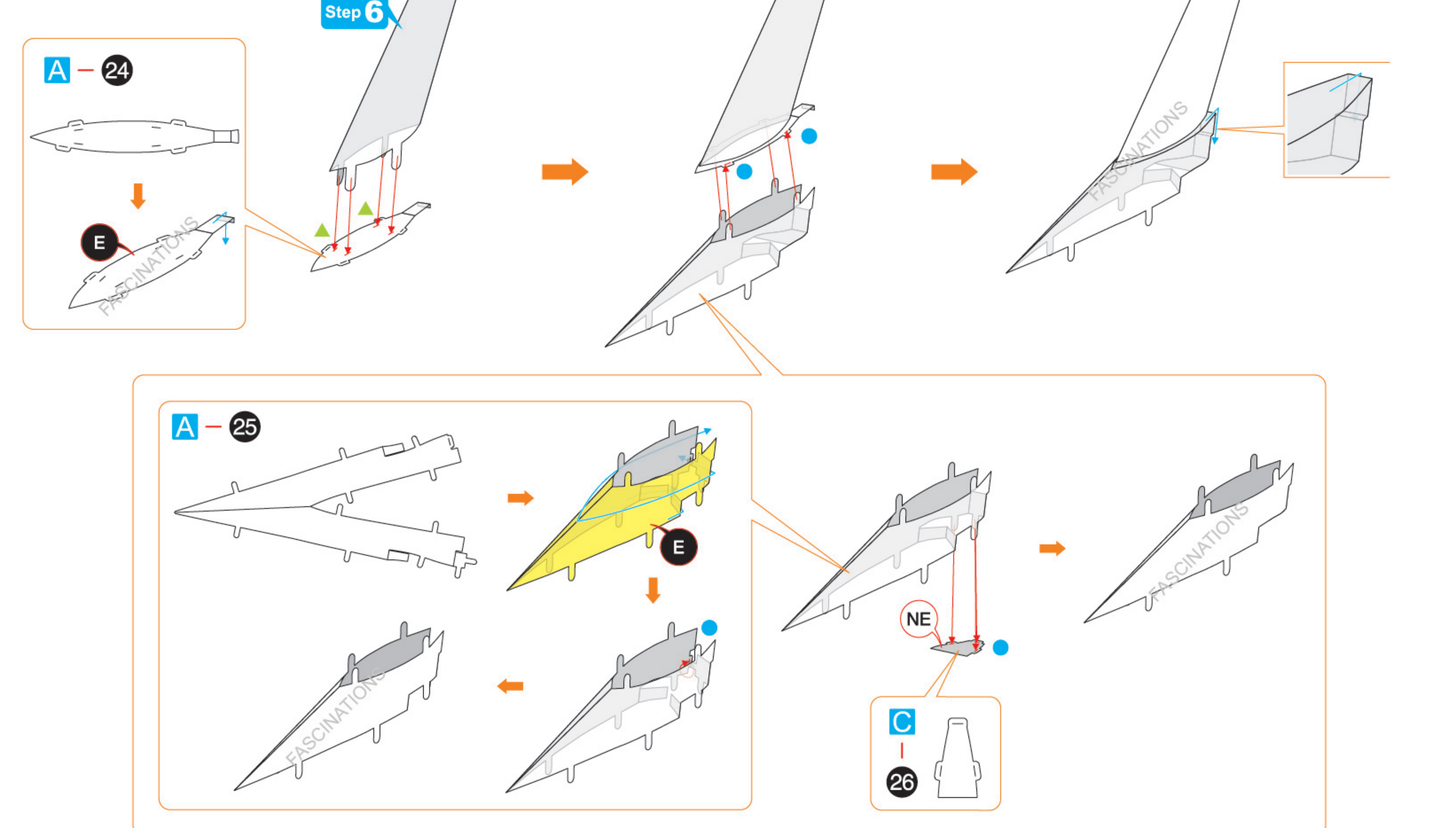
Step 5

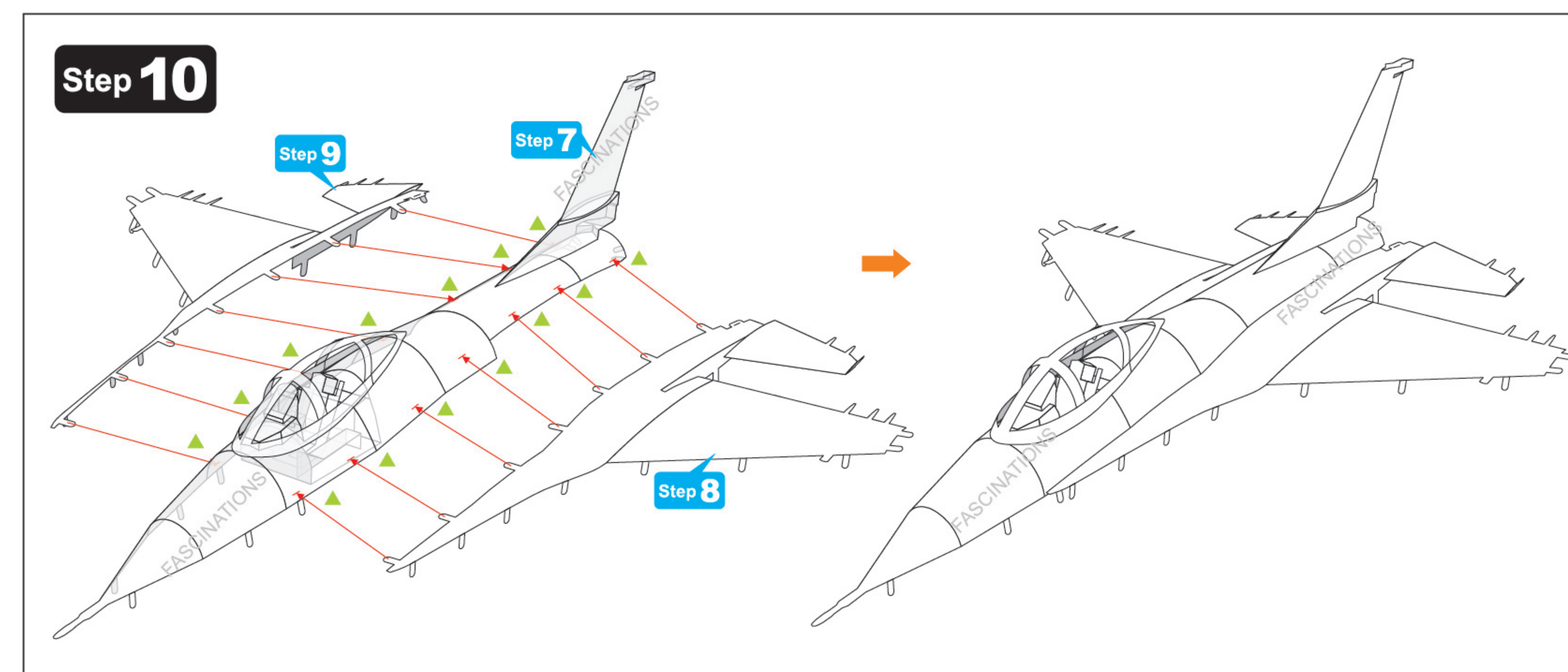
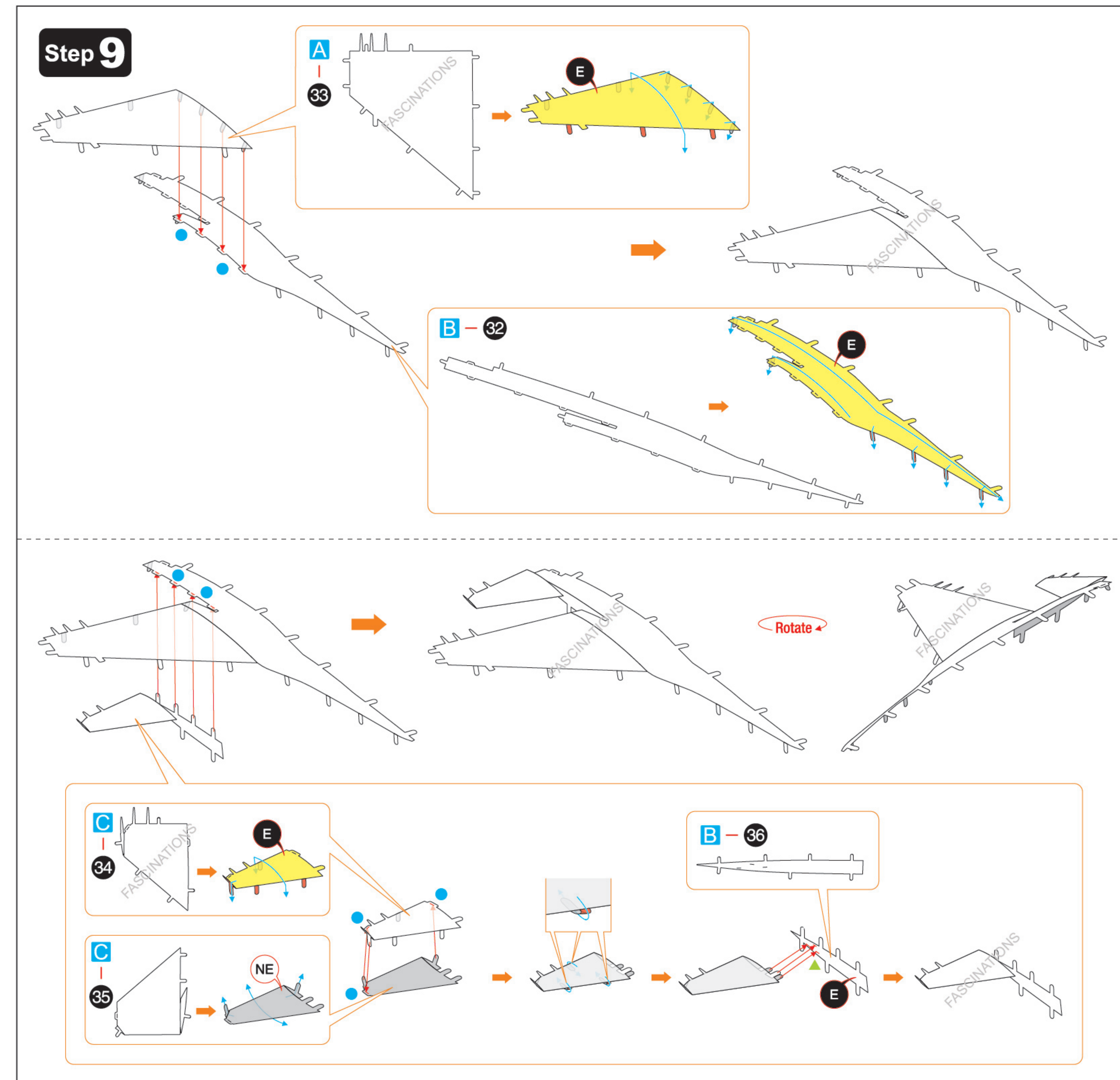
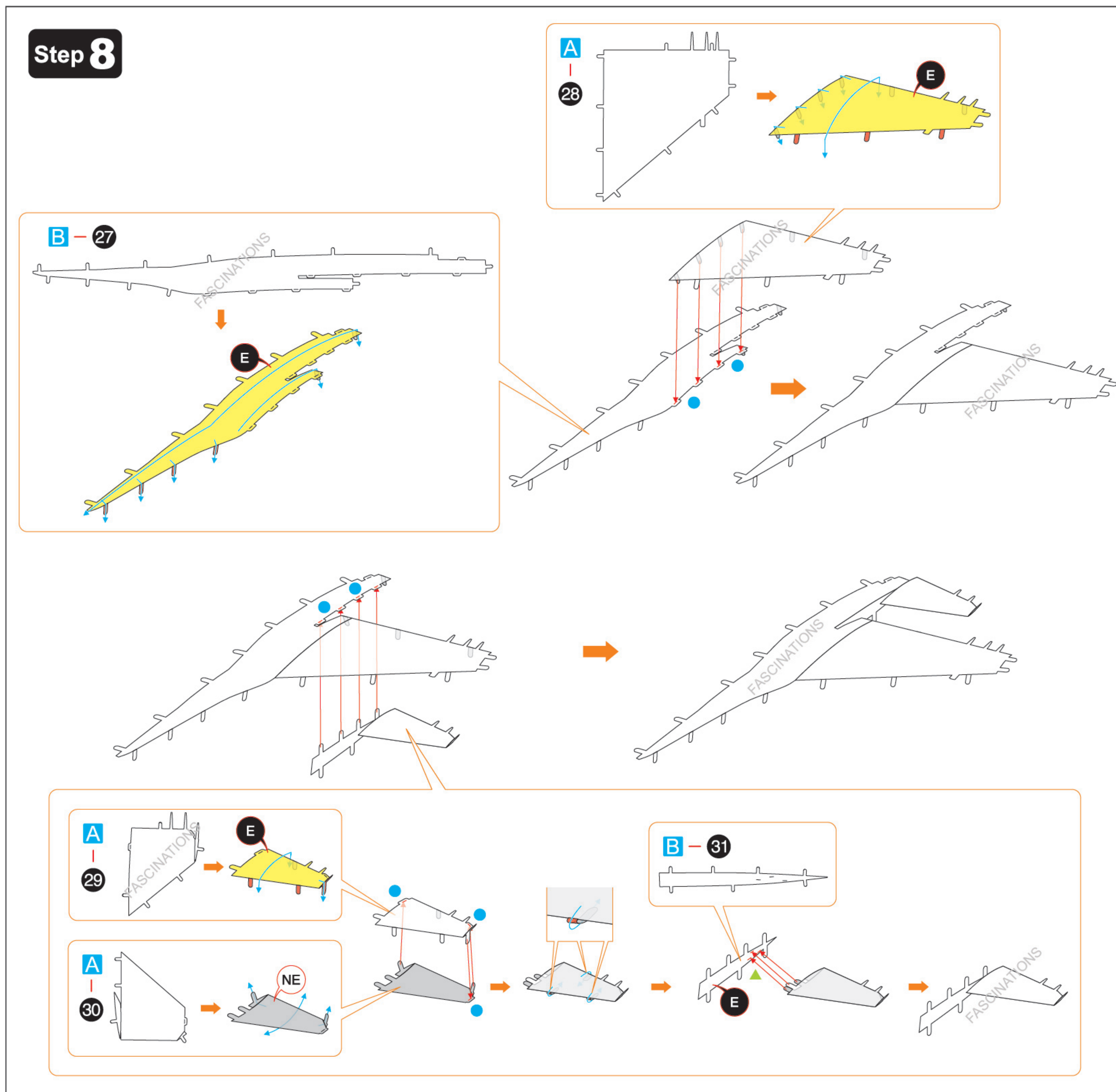
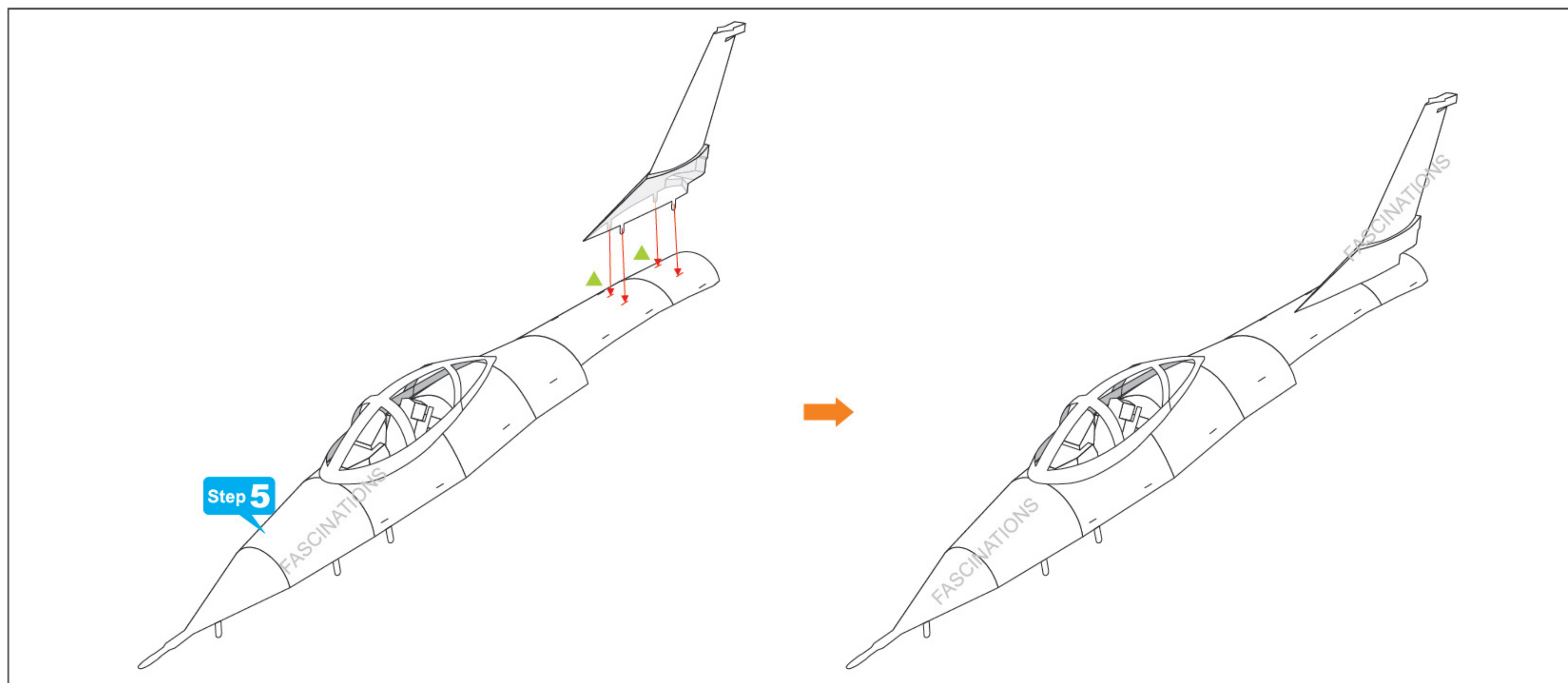


Step 6



Step 7





Step 11

C-38

Pay attention to the direction

NE

B-40

NE

C-39

E

C-37

NE

A-41

E

A-42

E

Rotate

Step 13

Step 12

Step 11

Step 14

B-51

NE

B-50

NE

Step 12

B-43

E

C-45

NE

Pay attention to the direction

B-46

E

Pay attention to the direction

C-44

E

A-49

E

B-48

A-47

E

Step 13

Step 12

Step 11

Step 14

B-51

NE

B-50

NE

Step 12

B-43

E

C-45

NE

Pay attention to the direction

B-46

E

Pay attention to the direction

C-44

E

A-49

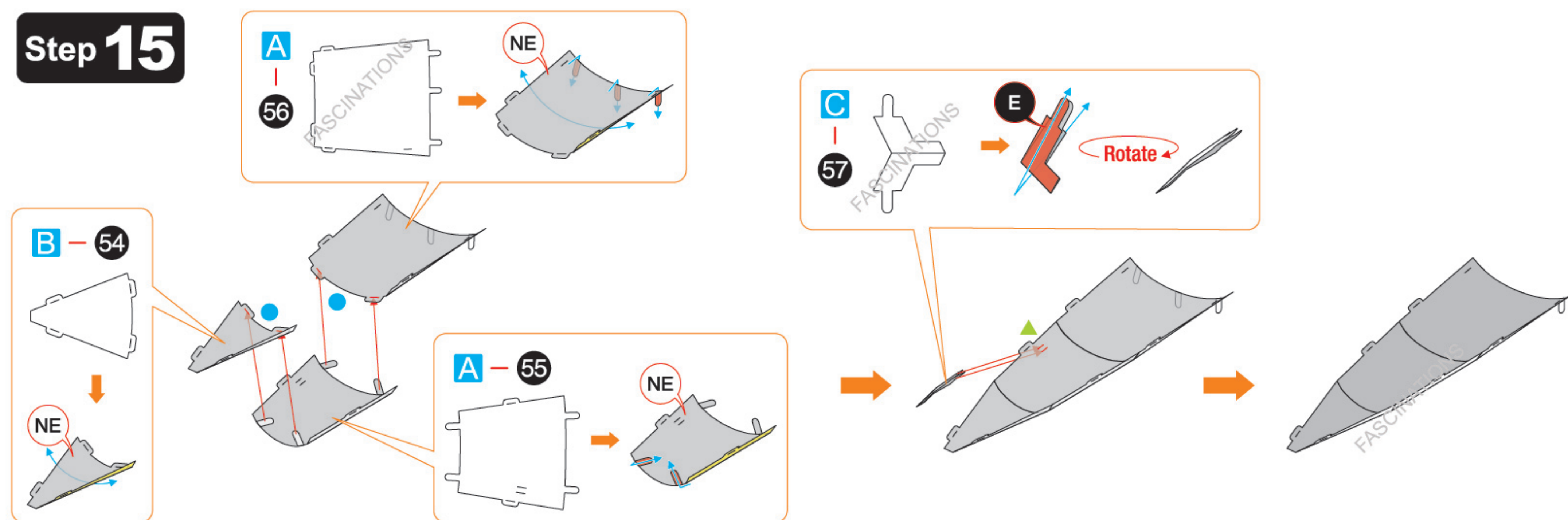
E

B-48

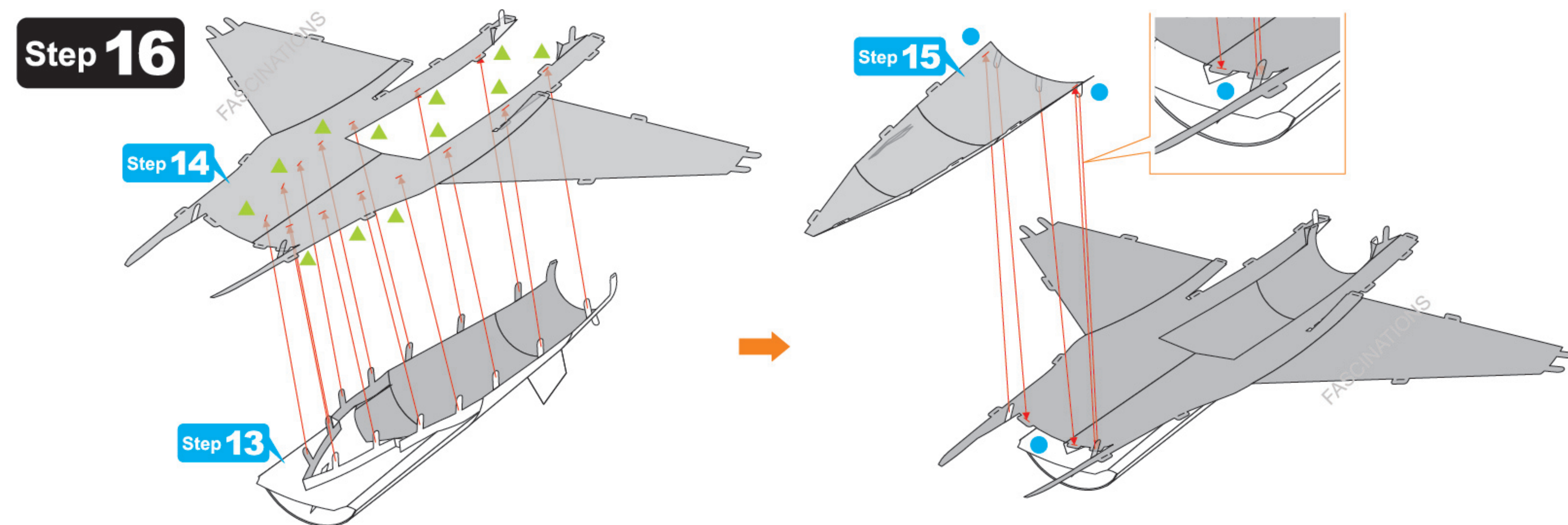
A-47

E

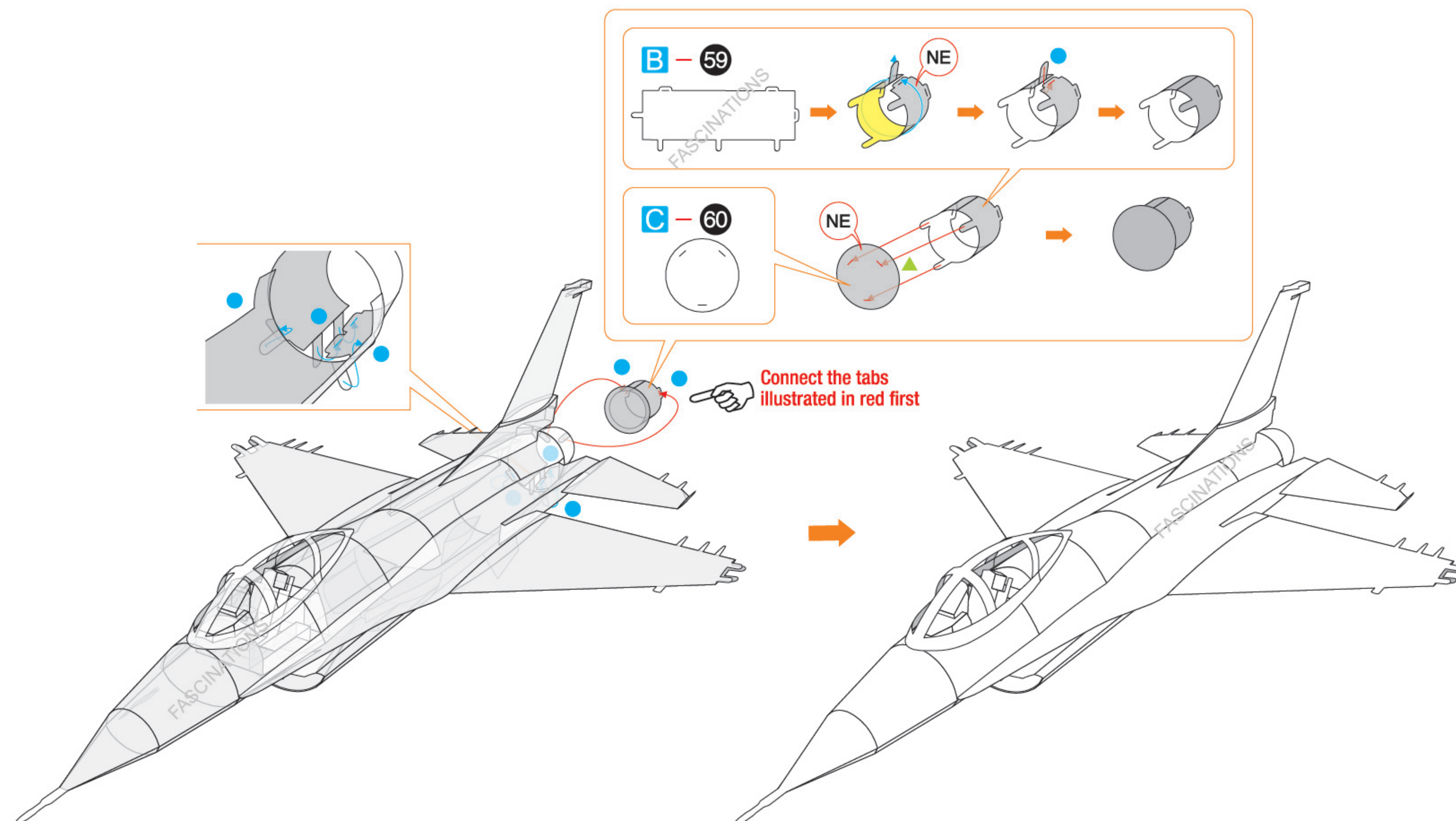
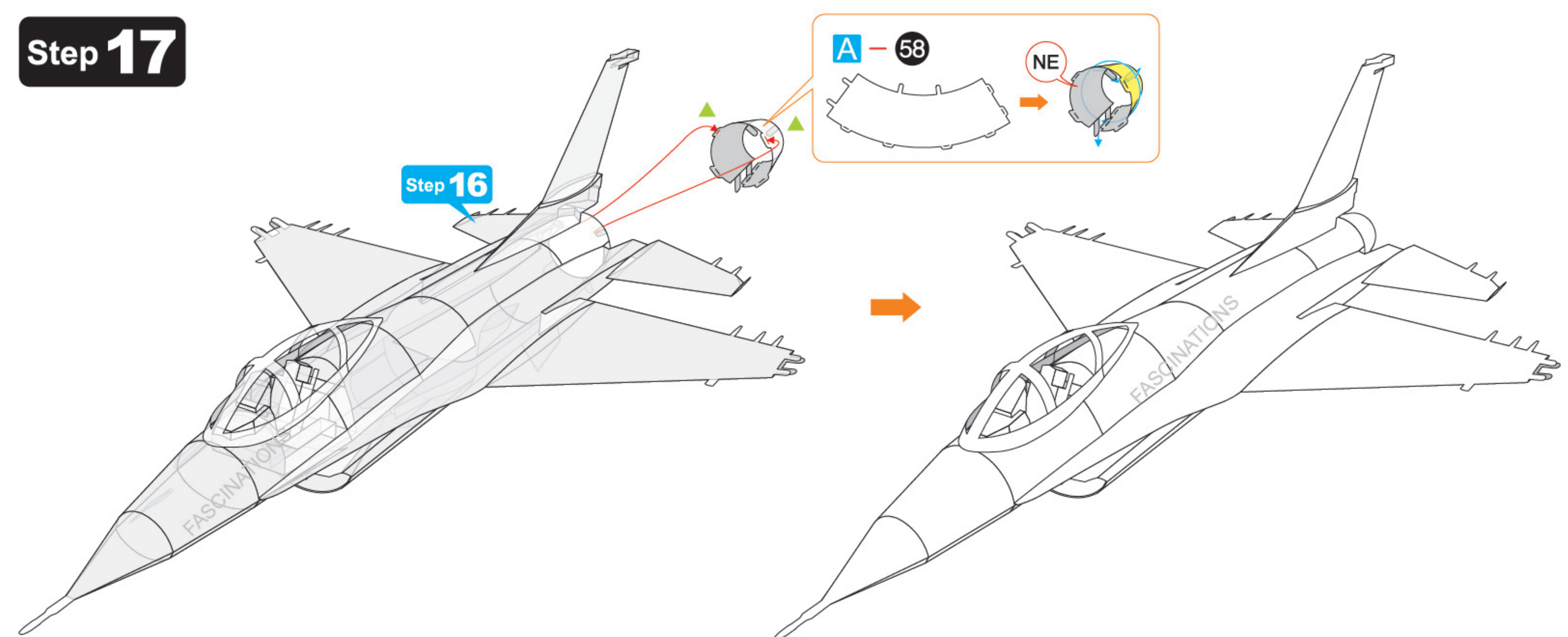
Step 15



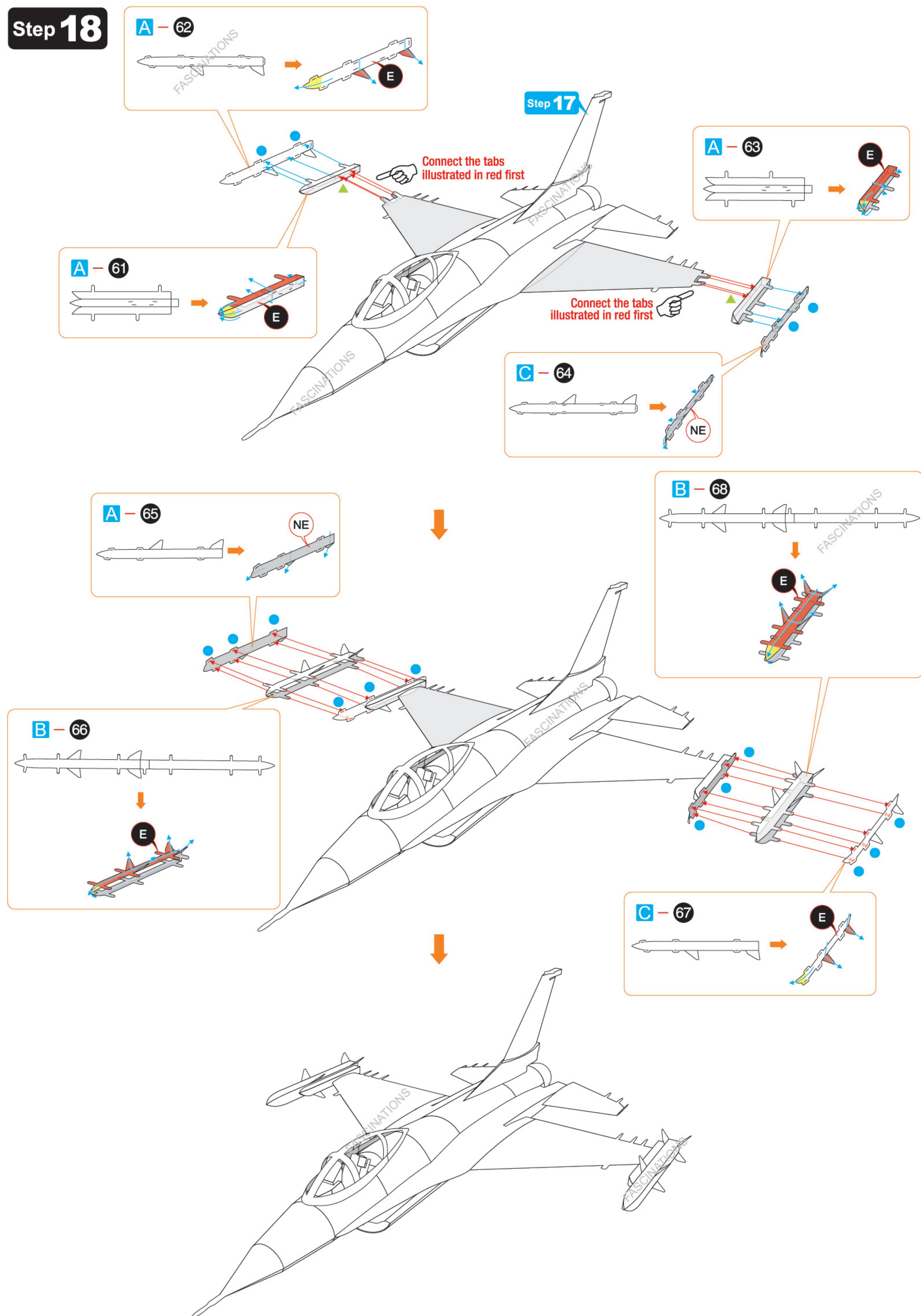
Step 16



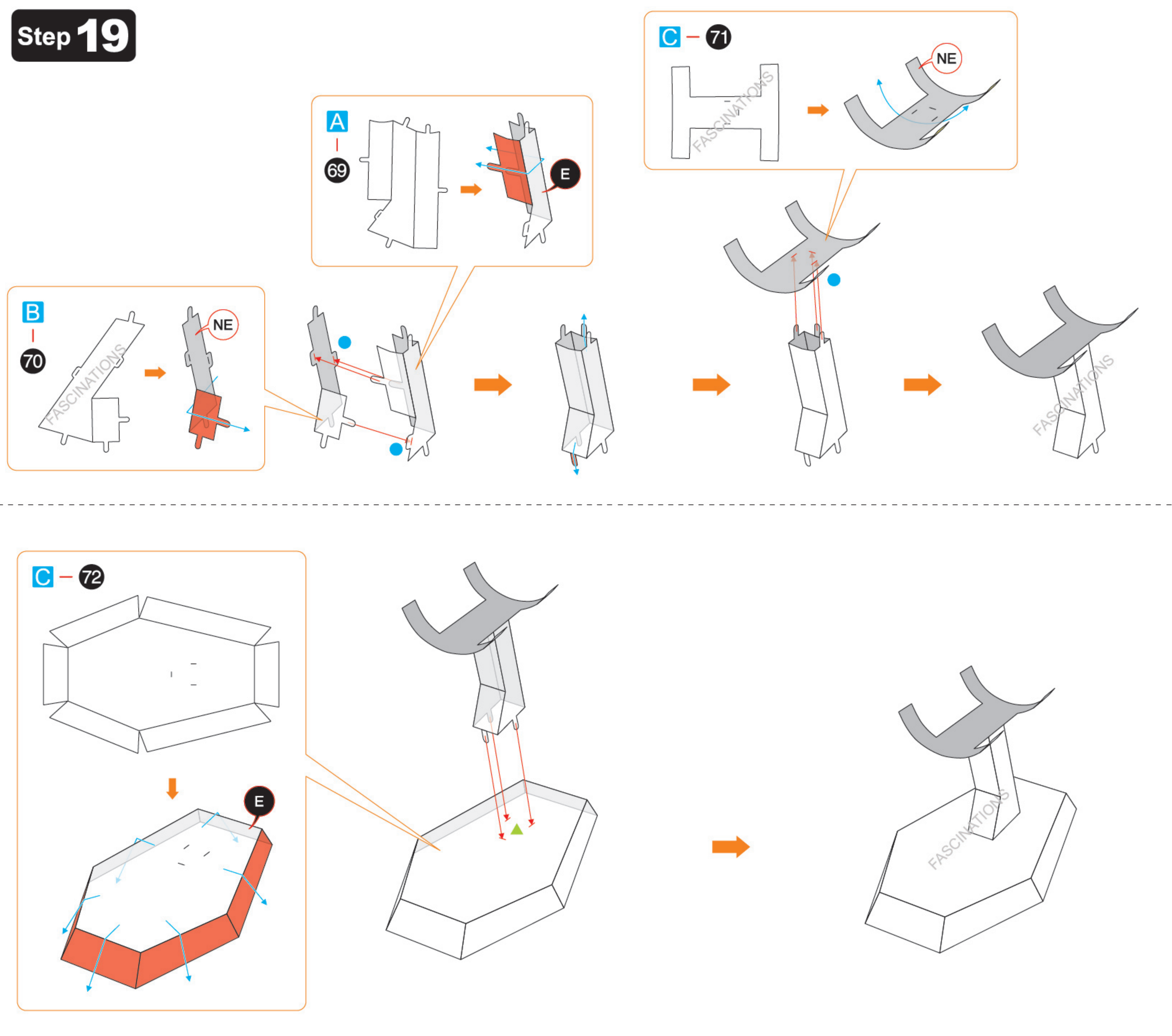
Step 17



Step 18



Step 19



Step 20

