

CHRISTMAS SLEIGH ME1050

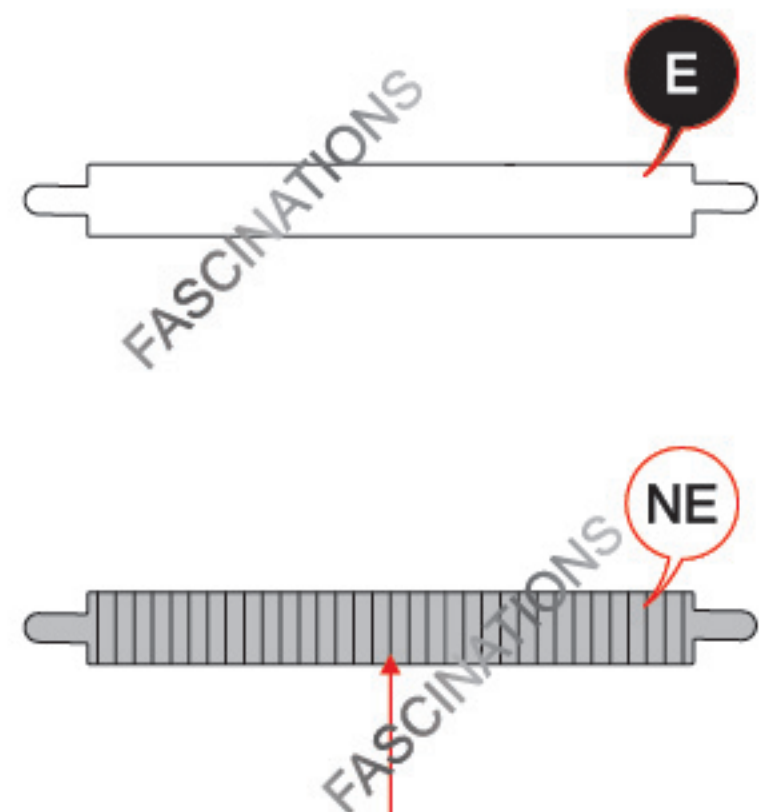
It is highly recommended that you visit
www.metal-earth.com/360/ME1050
to see the completed model before assembling your own

360°
view



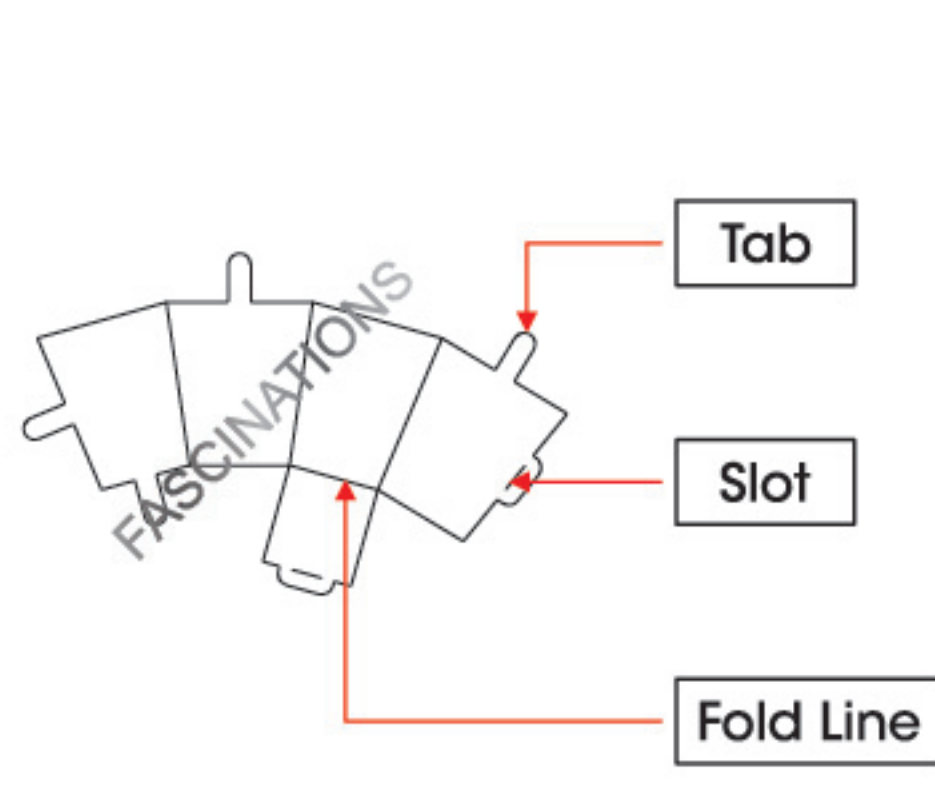
TO CREATE THE BEST CONNECTIONS

A - 13



Consider these engraved stripes as supporting features for the bend

B - 24



Legends:

- E** Engraved/ Color side
- NE** Non - engraved/ Silver side
- Attention point
- Insert tab and bend 90 degrees
- Insert tab and twist 90 degrees

Assembly tip:

If needed, slightly twist tabs to hold parts together then untwist and bend them down for a nice finish.

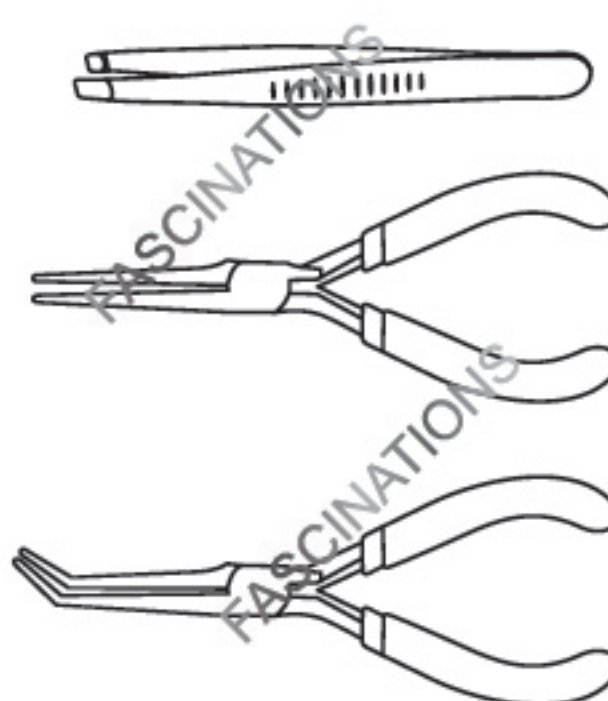
- Yellow areas should be curled
- Red areas should be folded

Recommended tools:

- Wire cutters: helpful for taking parts from the metal sheets.

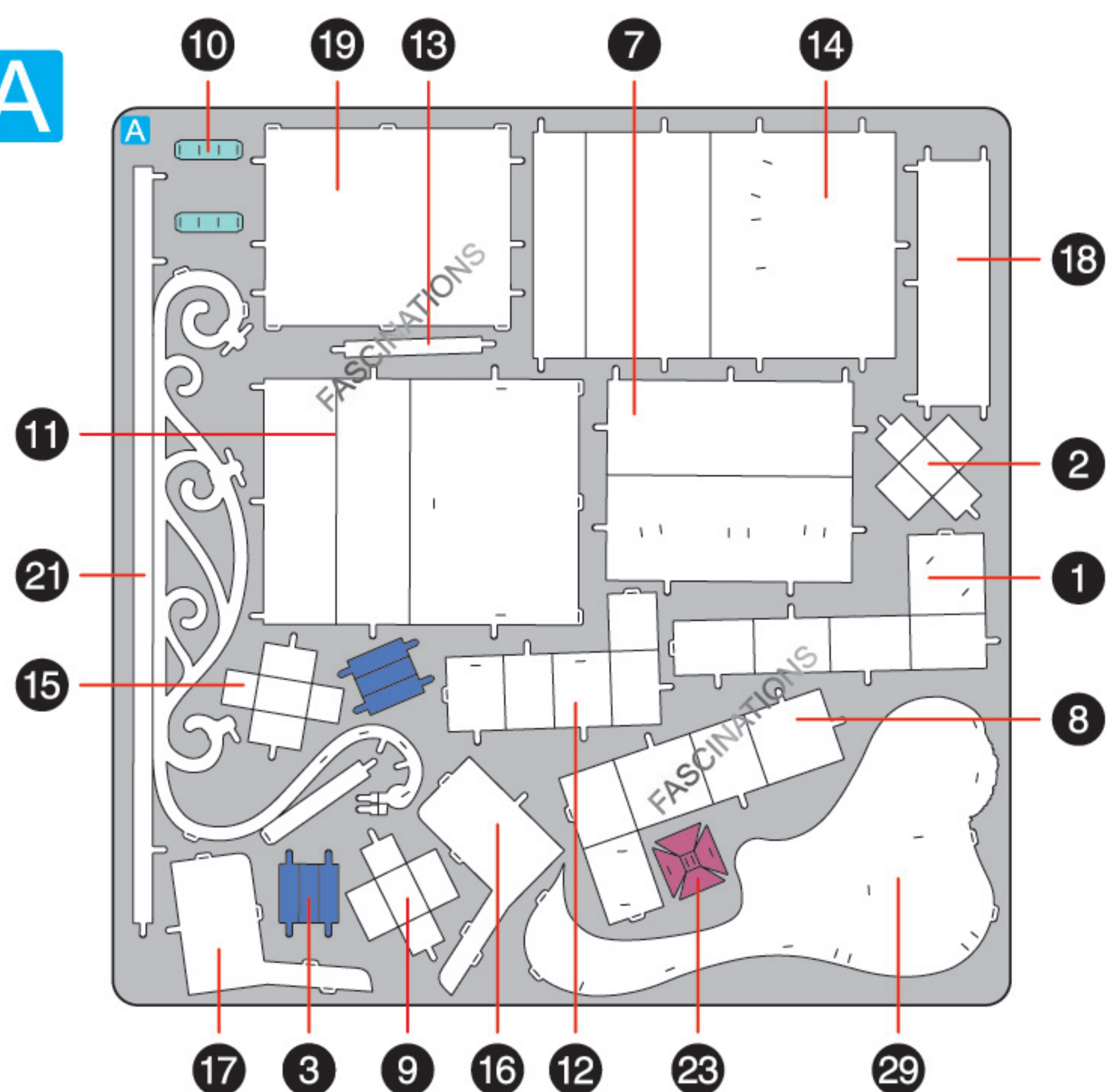


- Tweezers or needle nose pliers: helpful for folding parts, bending and twisting tabs.

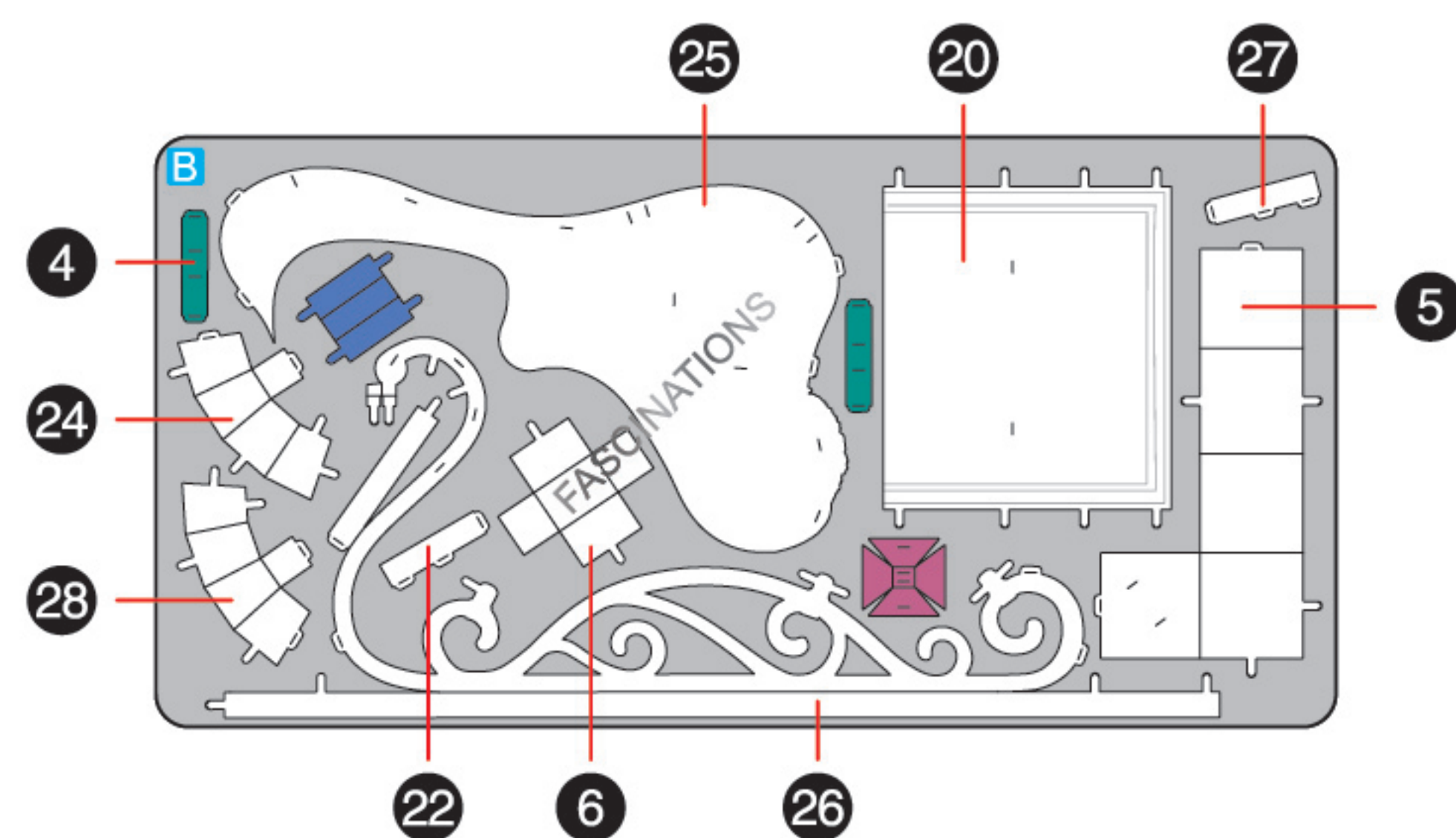


METAL SHEETS

A



B



Parts with same color are duplicates



In order to avoid possible injury from sharp edges, please carefully discard the metal sheets after parts have been removed.

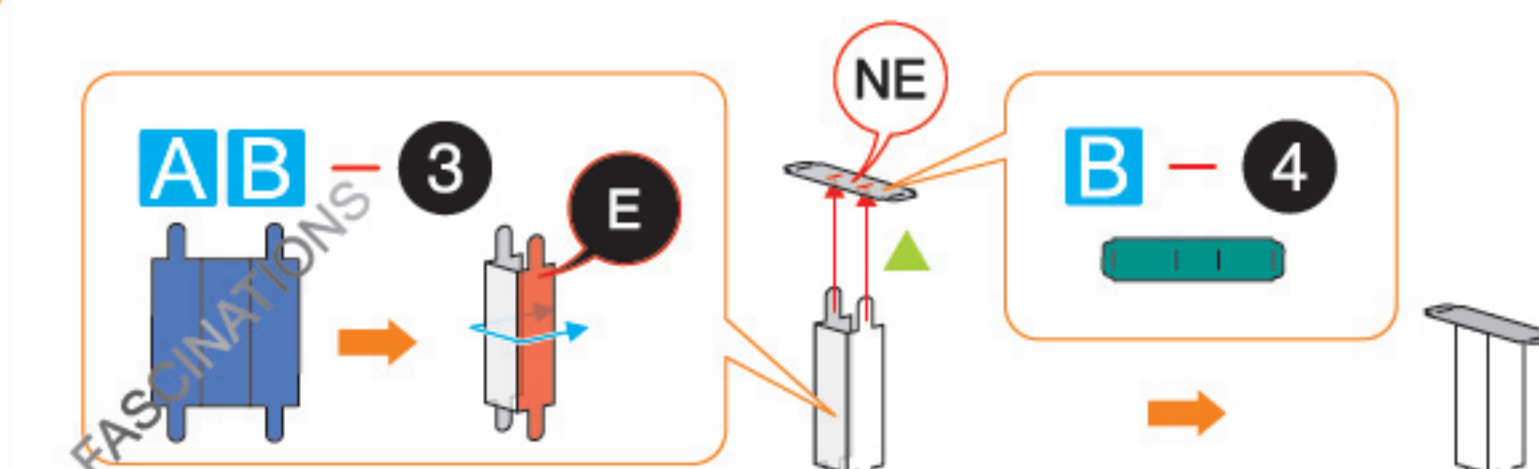
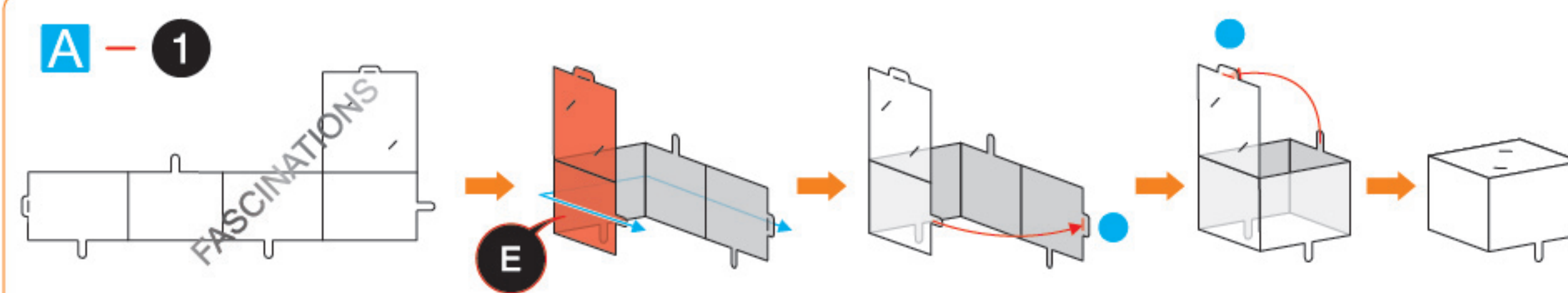


Go to www.metal-earth.com/360/ME1050 to see the zoomable PDF version of this instruction sheet

ASSEMBLY FLOW CHART

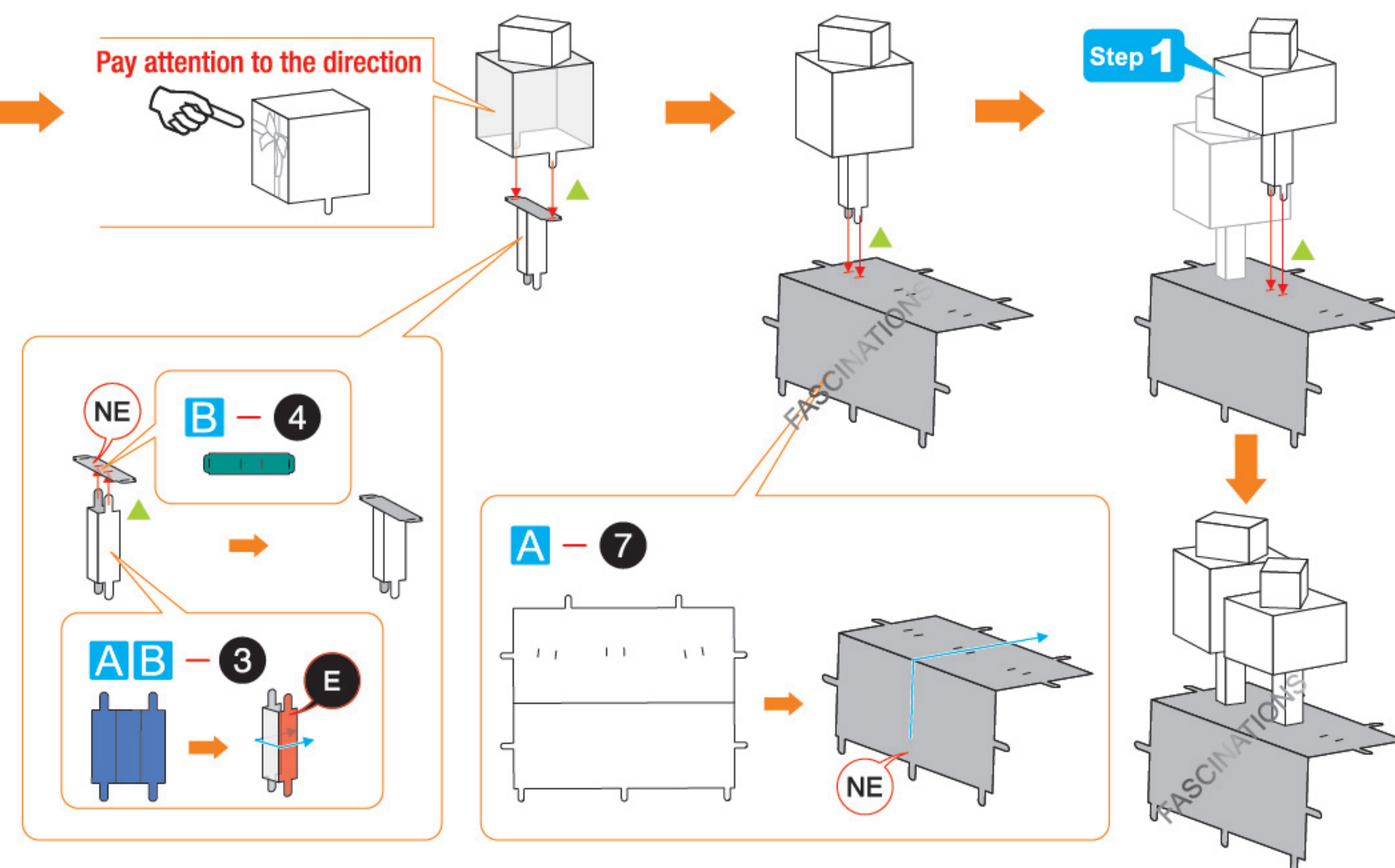
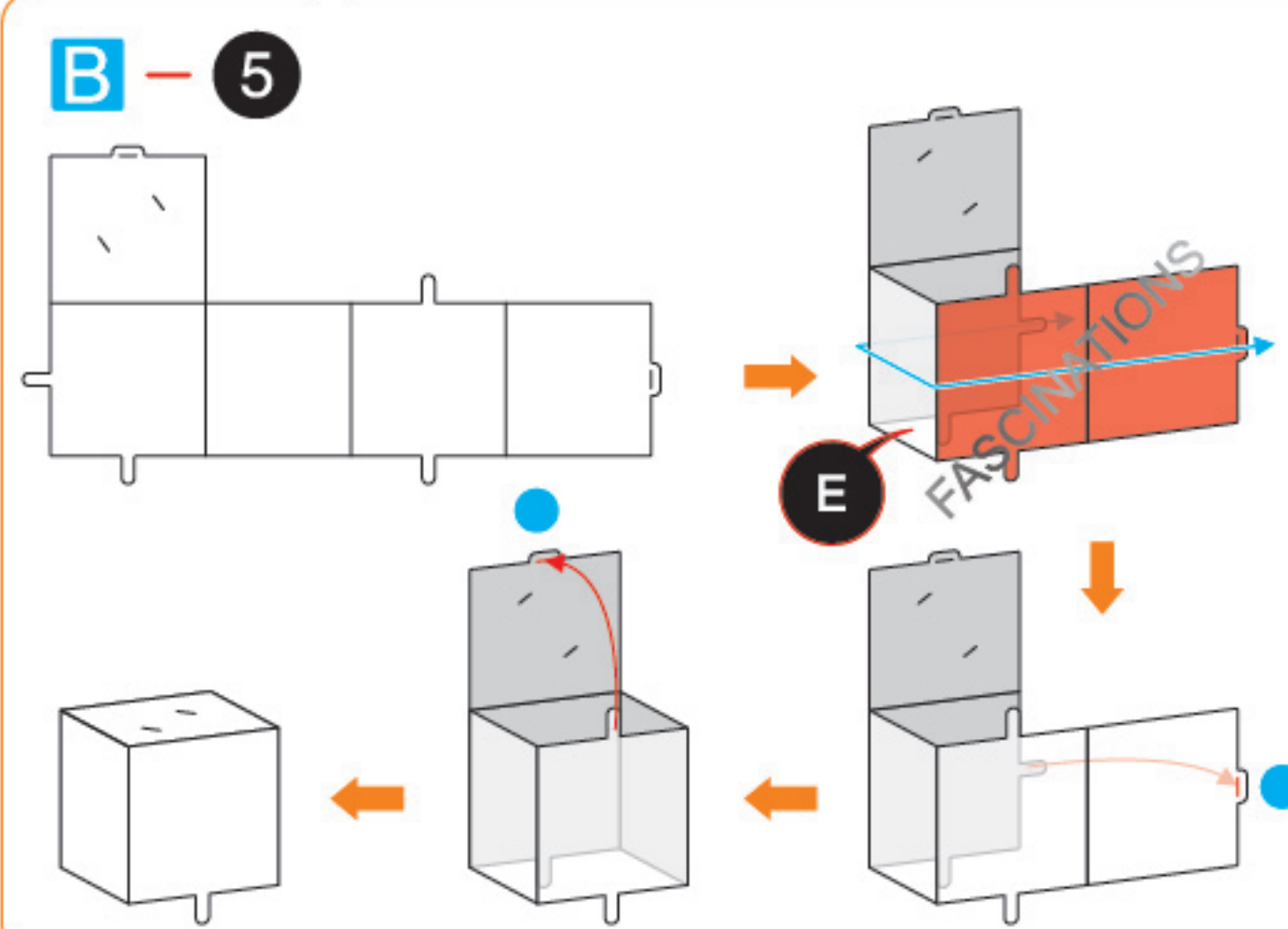
Step 1

A - 1



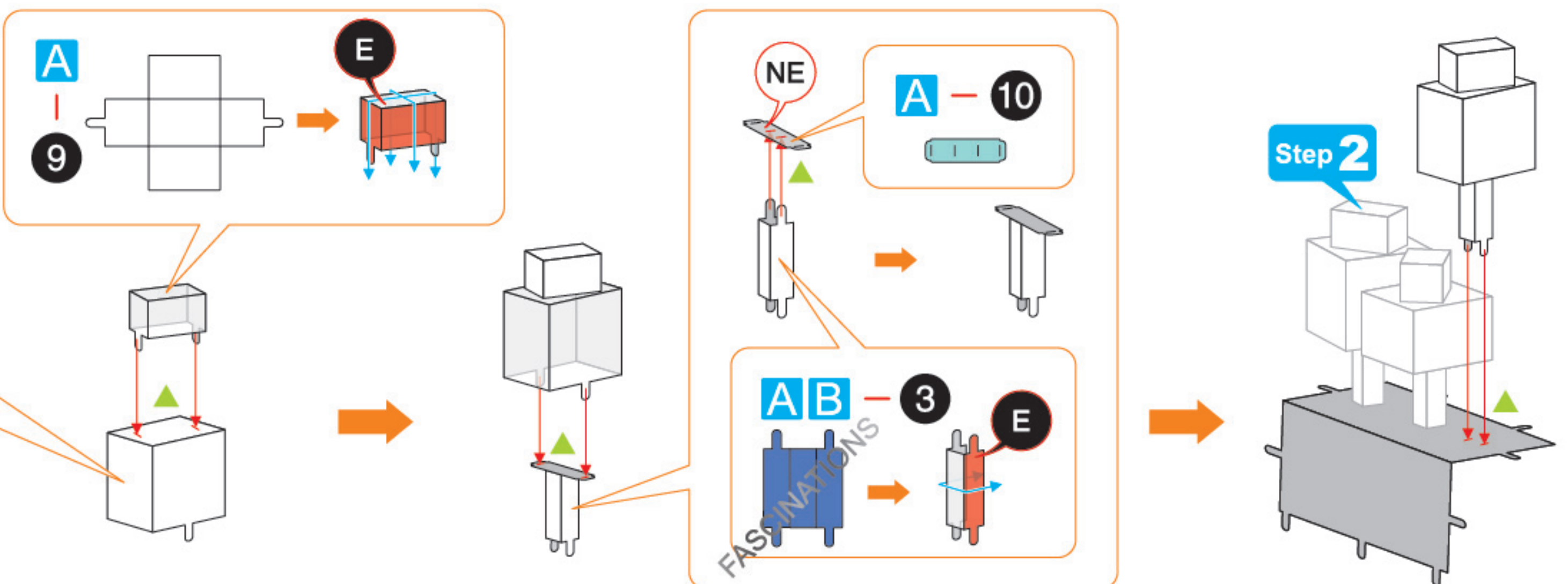
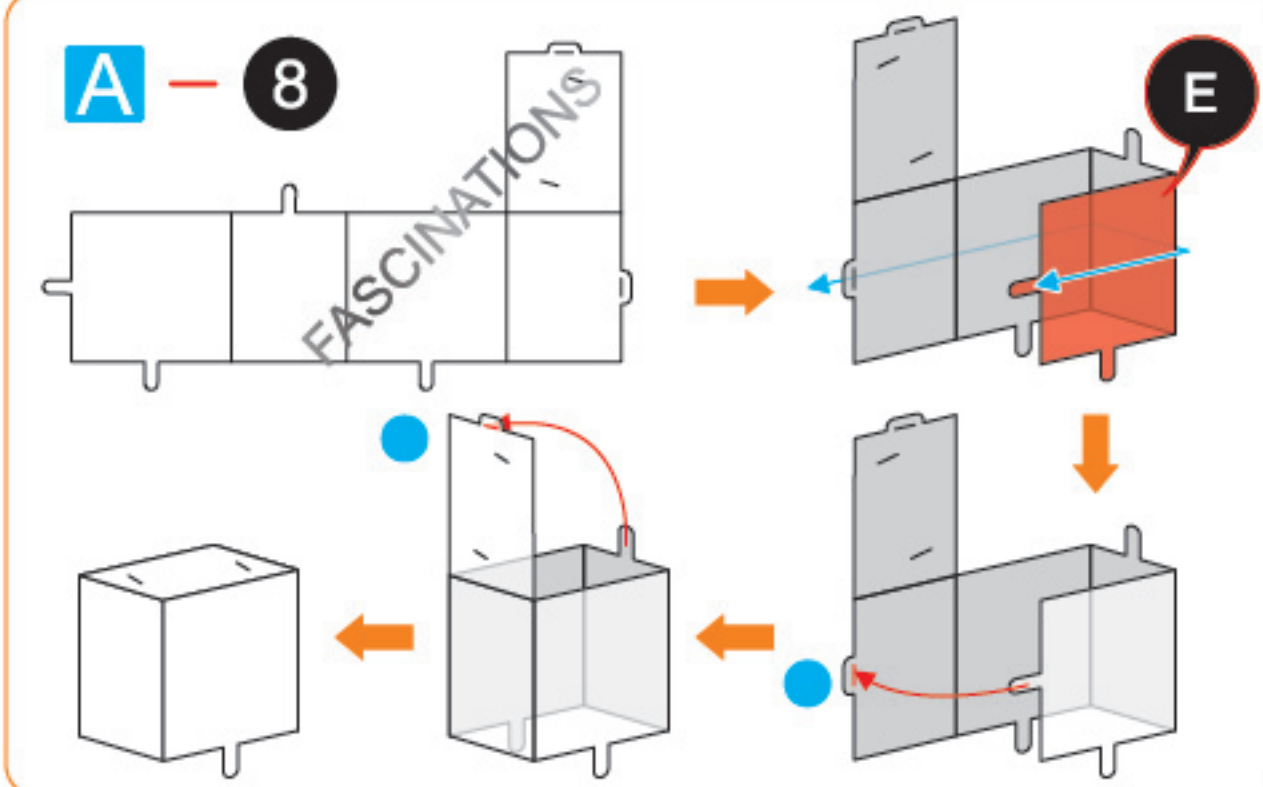
Step 2

B - 5

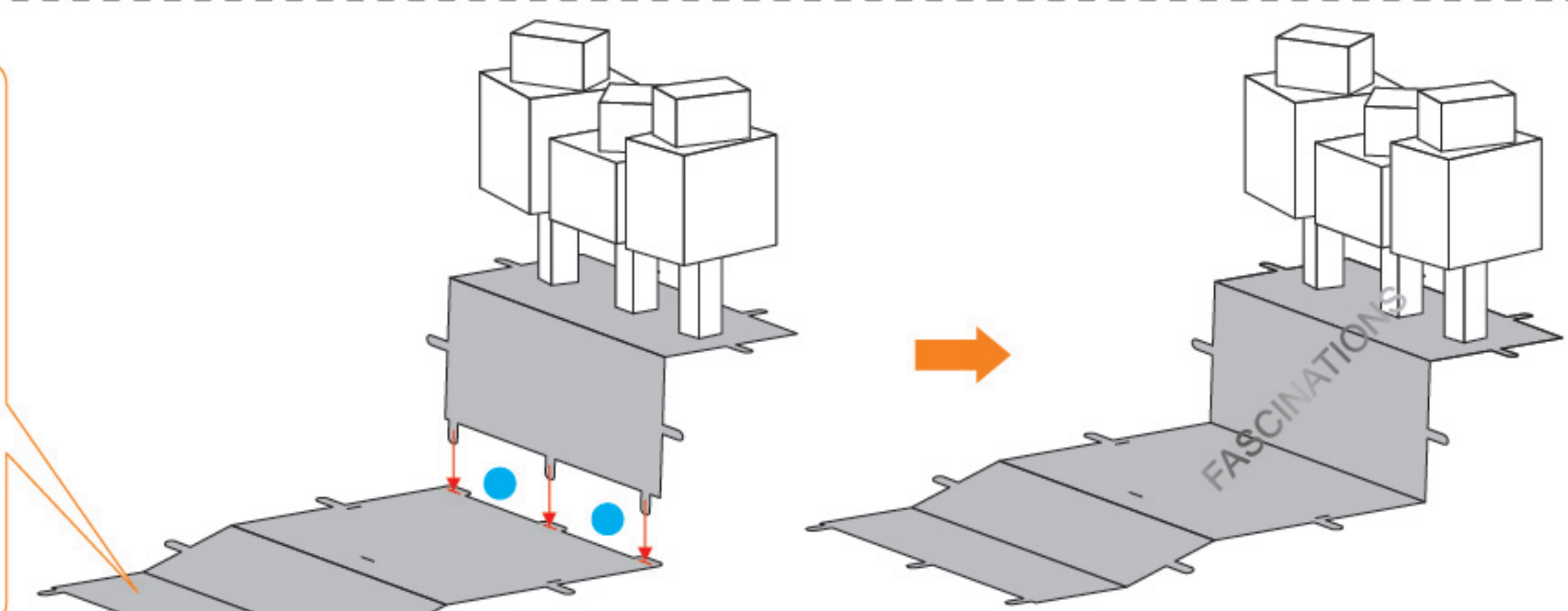
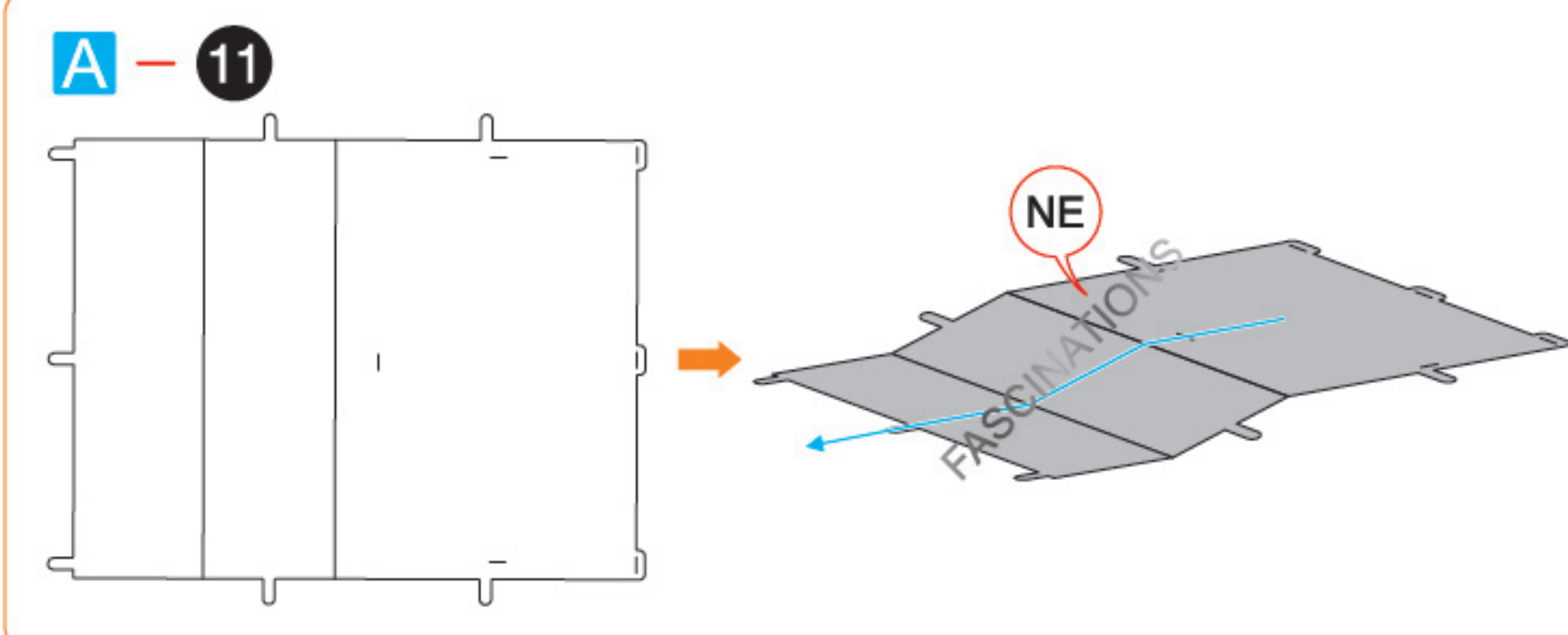


Step 3

A - 8

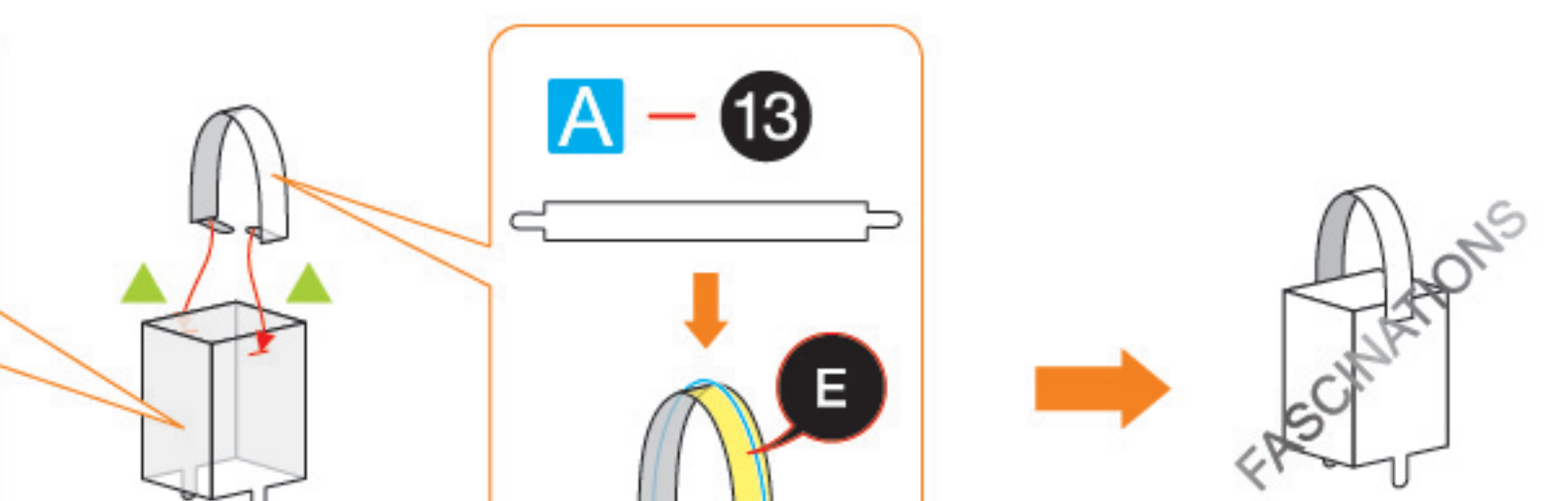
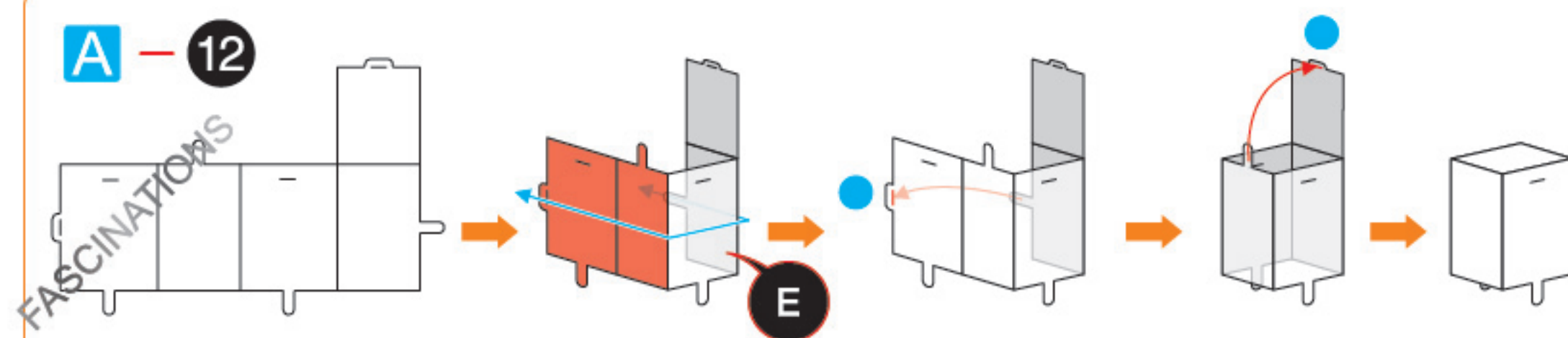


A - 11

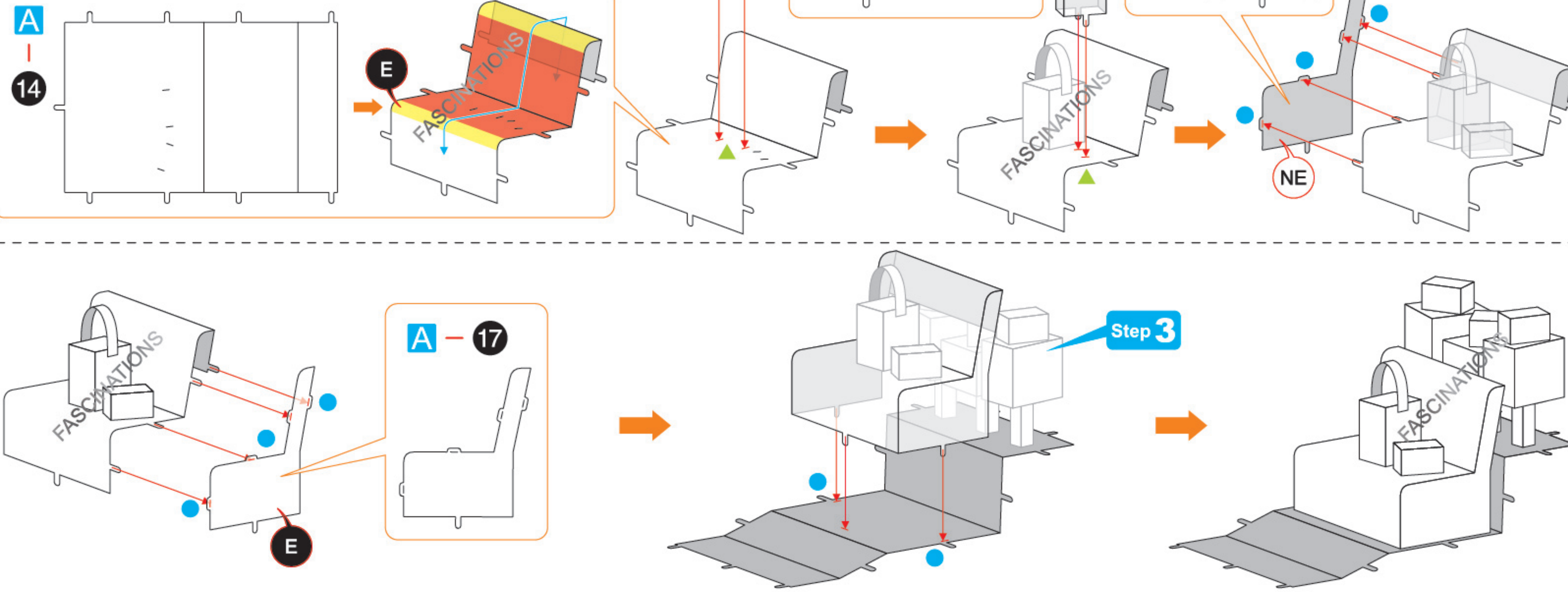


Step 4

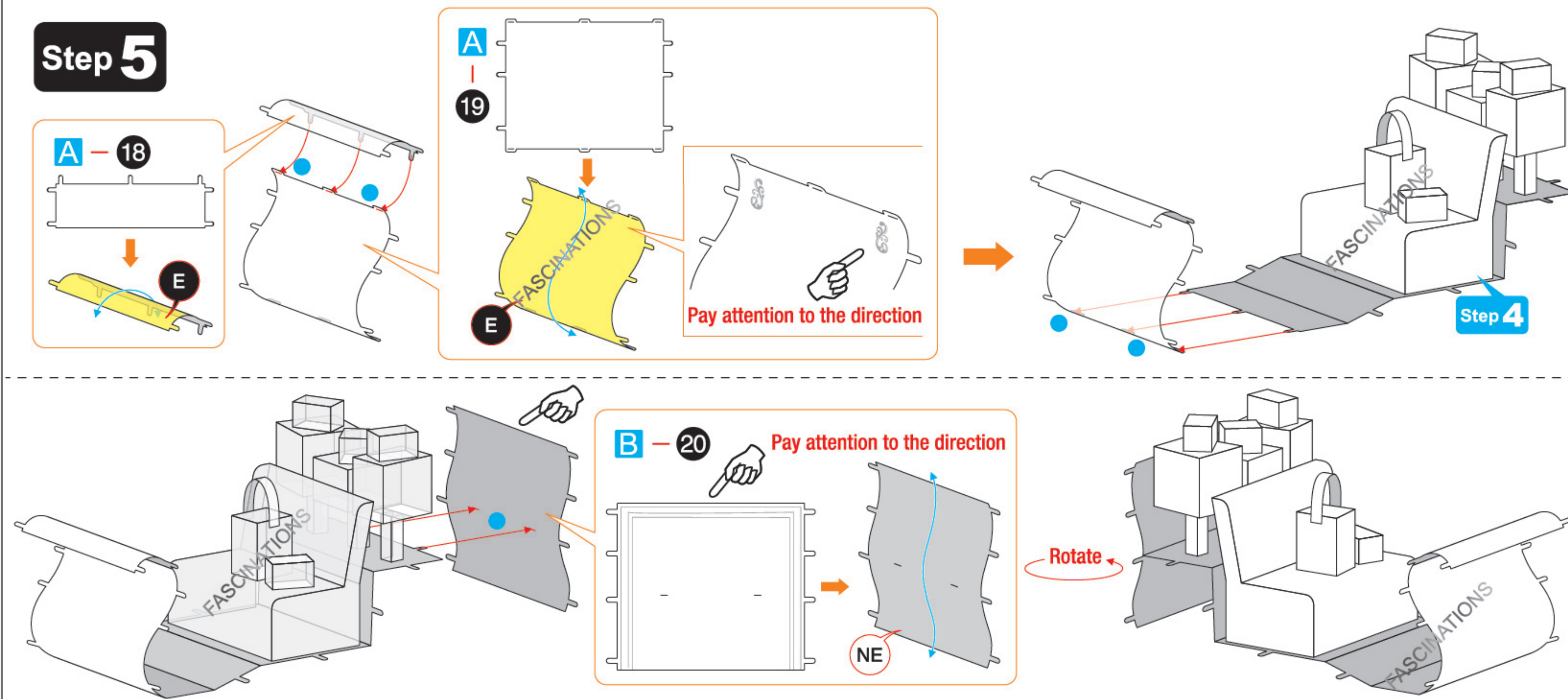
A - 12



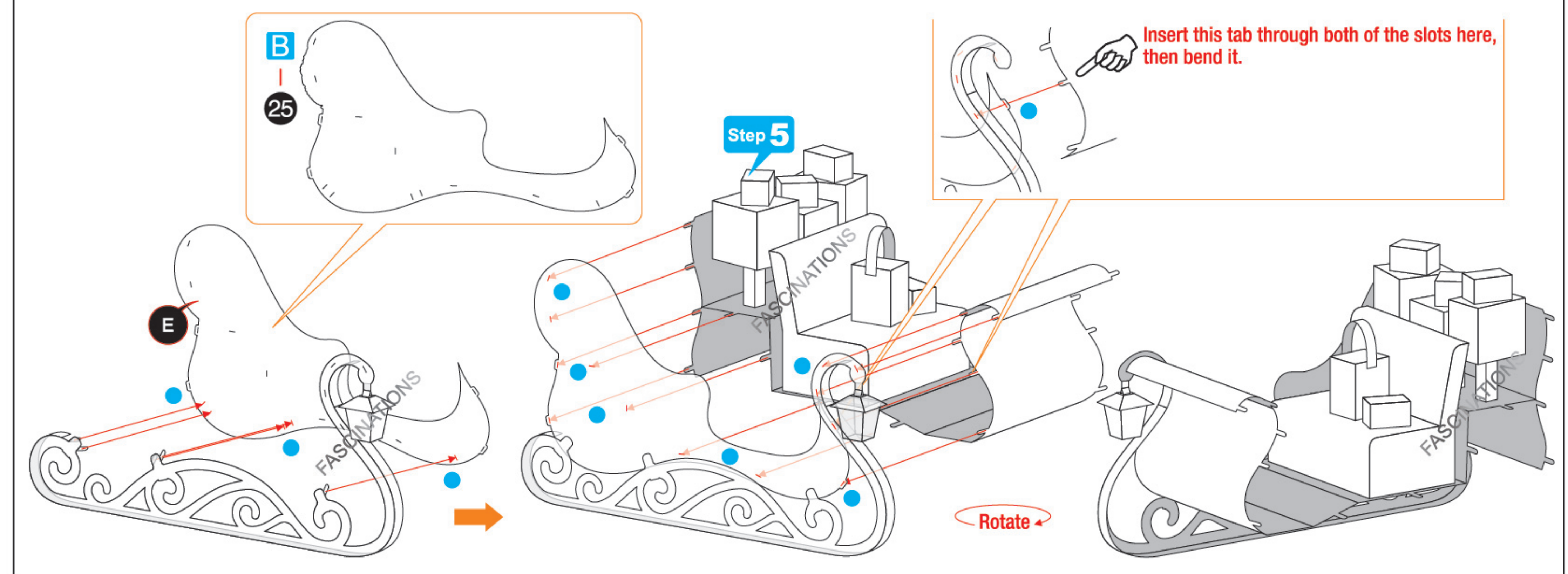
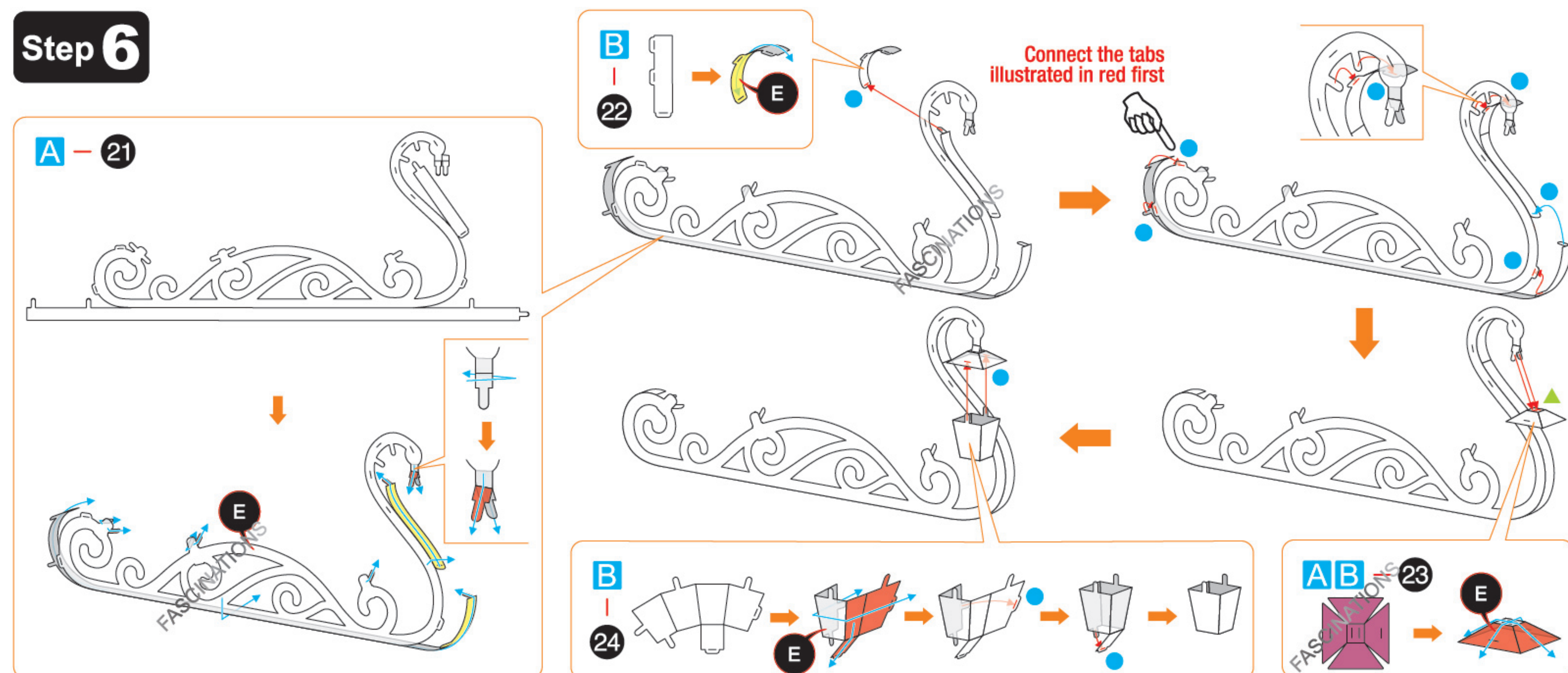
Pay attention to the direction



Step 5



Step 6



Step 7

