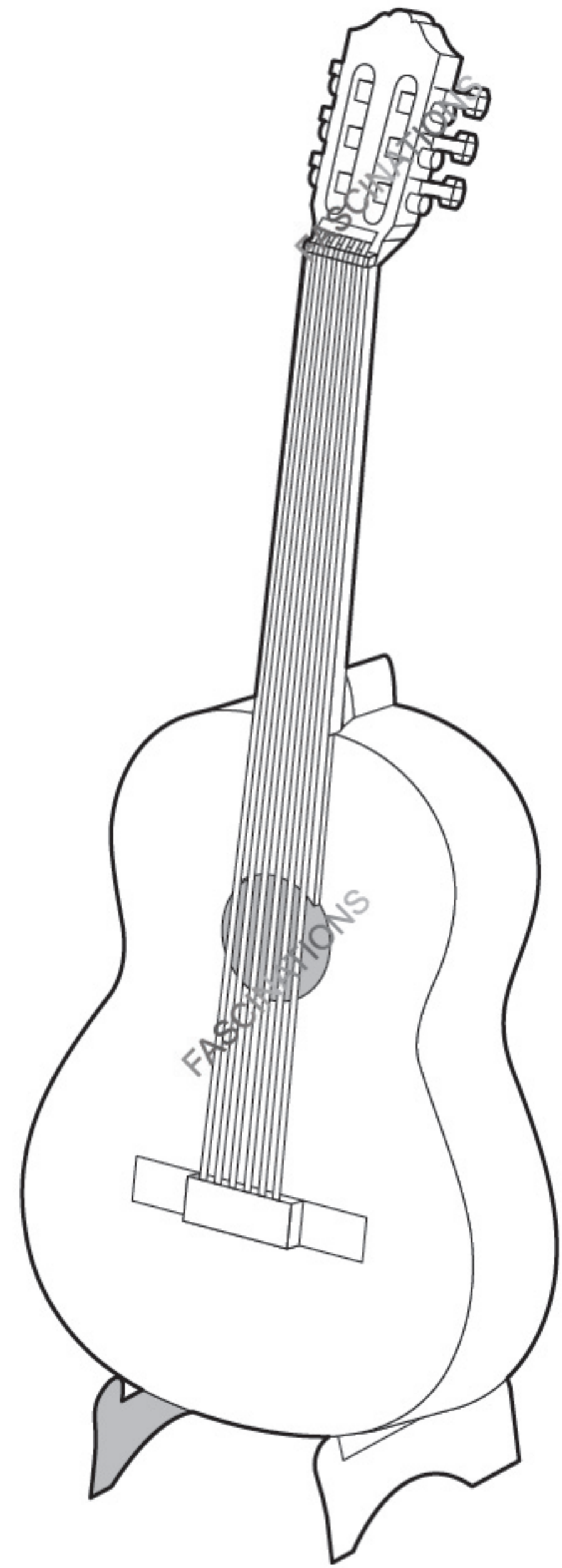


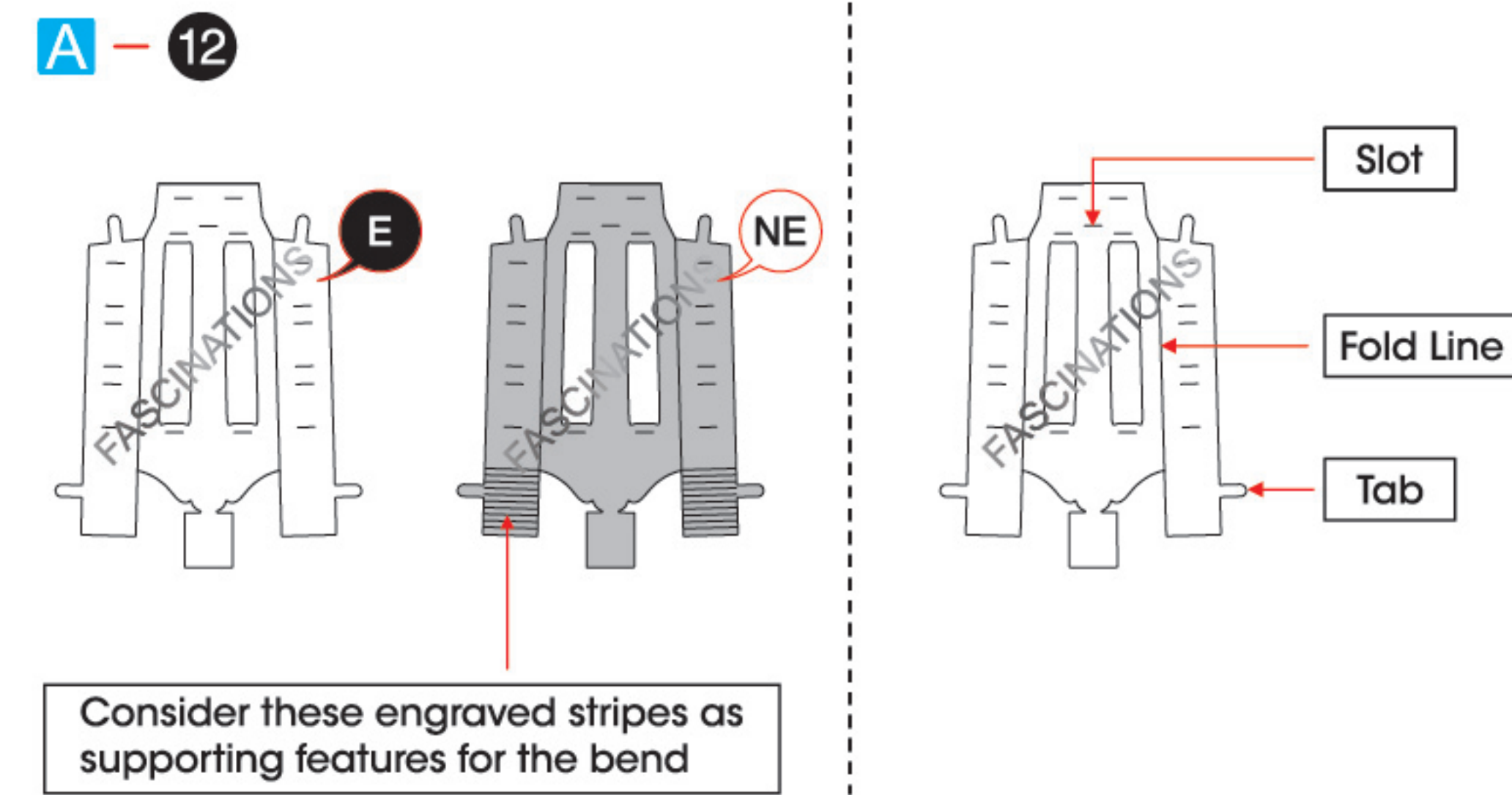


It is highly recommended that you visit www.metalearth.com/360/ME1058 to see the completed model before assembling your own

ME1058 CLASSICAL GUITAR



TO CREATE THE BEST CONNECTIONS

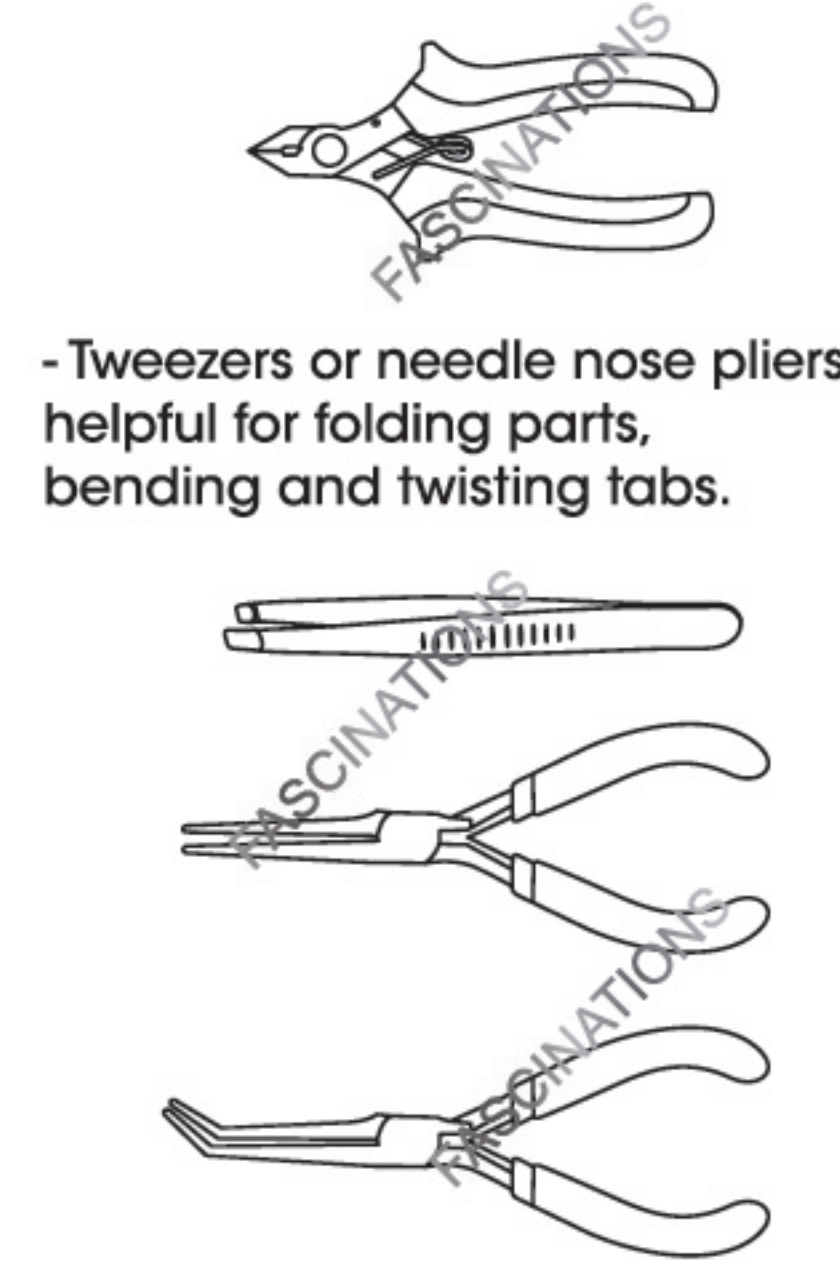


Legends:

- Engraved/ Color side
- Non - engraved/ Silver side
- Attention point
- Insert tab and bend 90 degrees
- Insert tab and twist 90 degrees

Recommended tools:

- Wire cutters: helpful for taking parts from the metal sheets.



- Tweezers or needle nose pliers: helpful for folding parts, bending and twisting tabs.

Assembly tip:

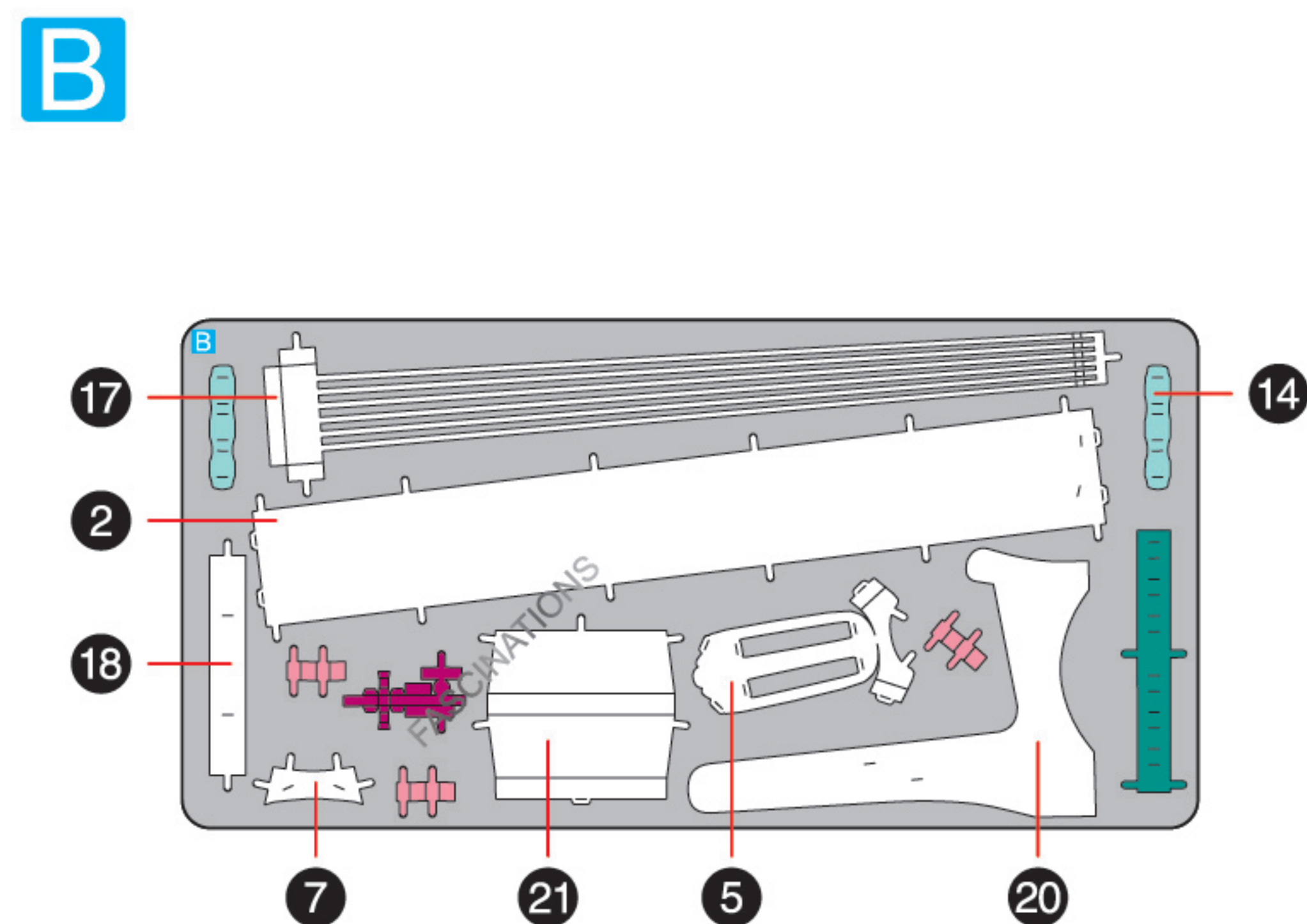
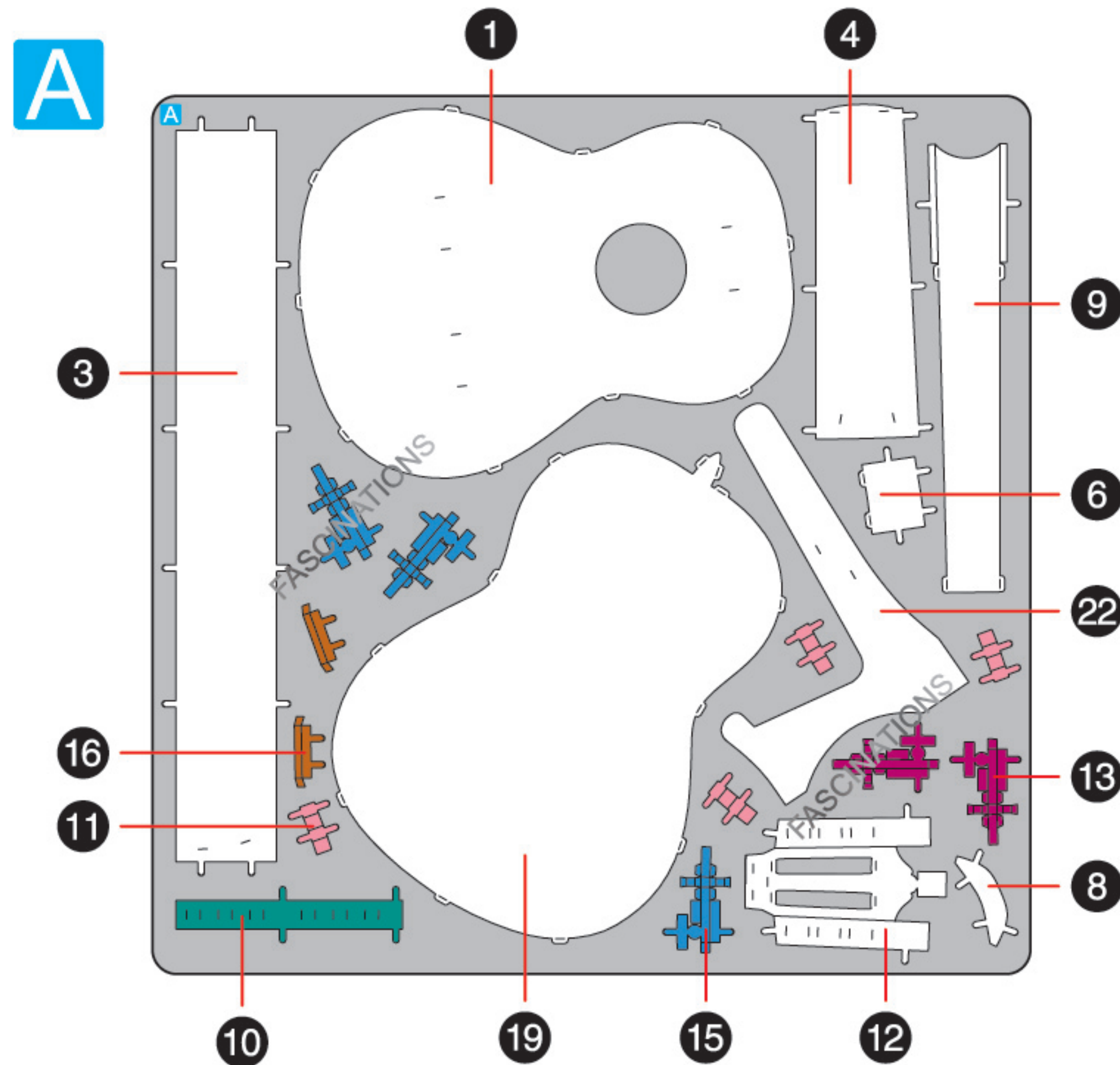
If needed, slightly twist tabs to hold parts together then untwist and bend them down for a nice finish.

Yellow areas should be curled

Red areas should be folded

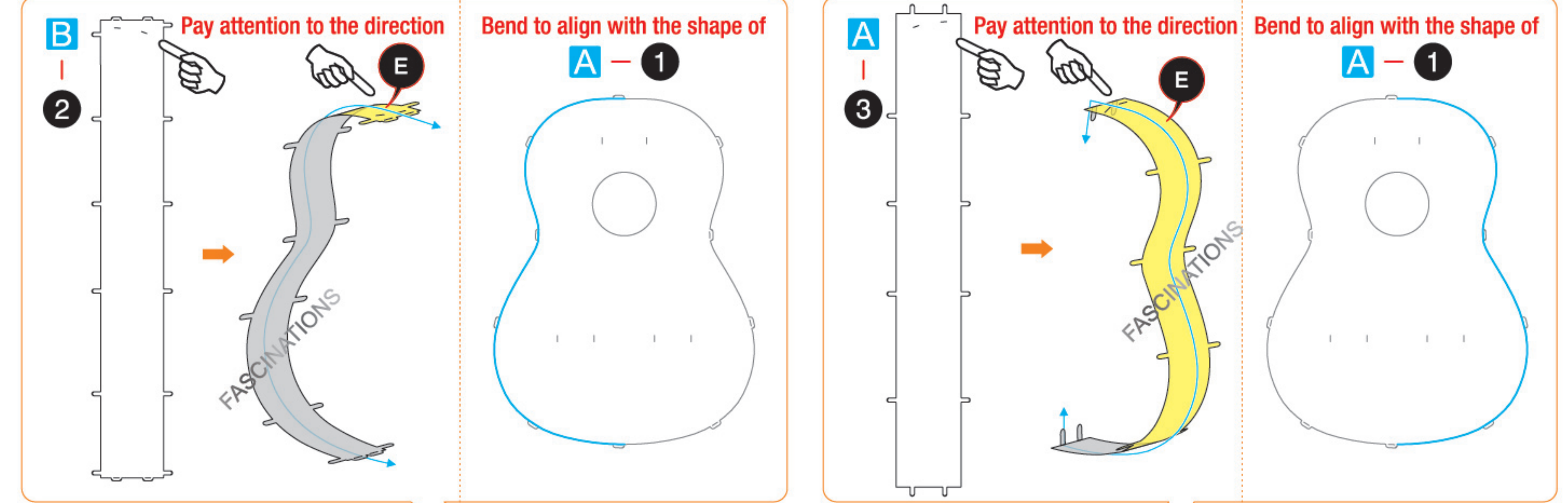
METAL SHEETS

Parts with same color are duplicates

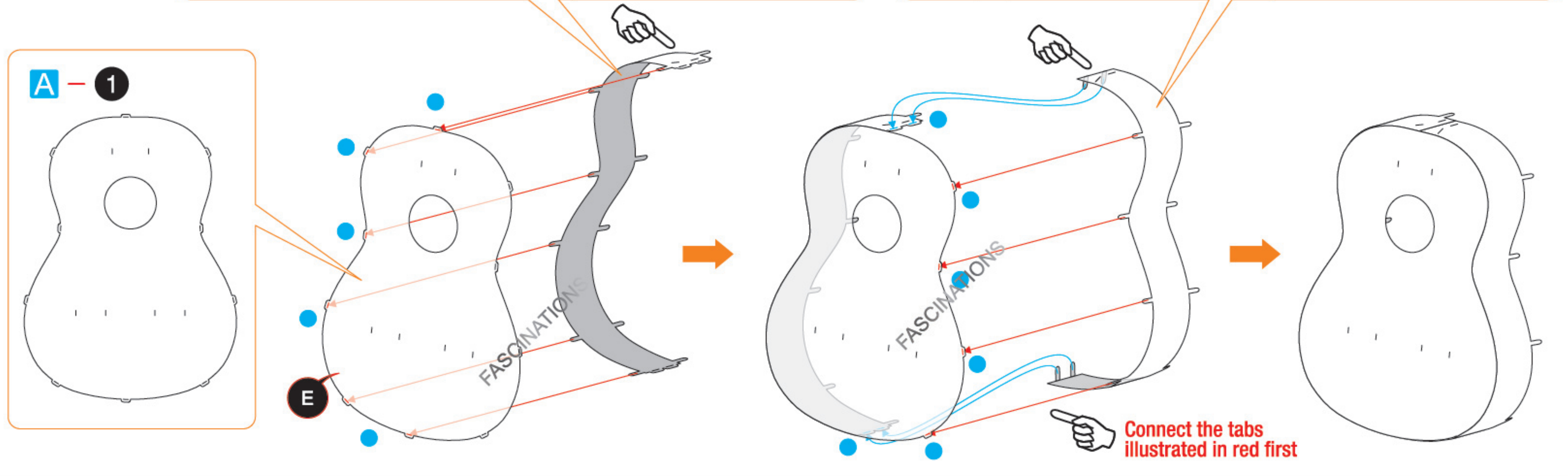


ASSEMBLY FLOW CHART

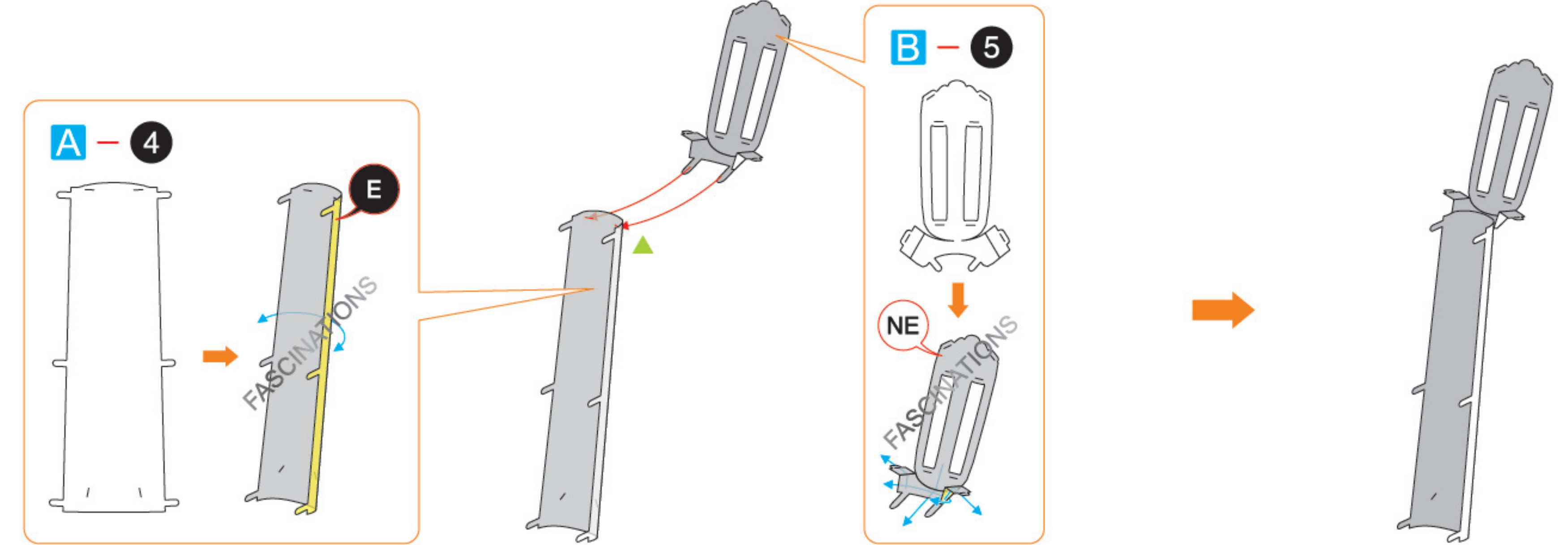
Step 1



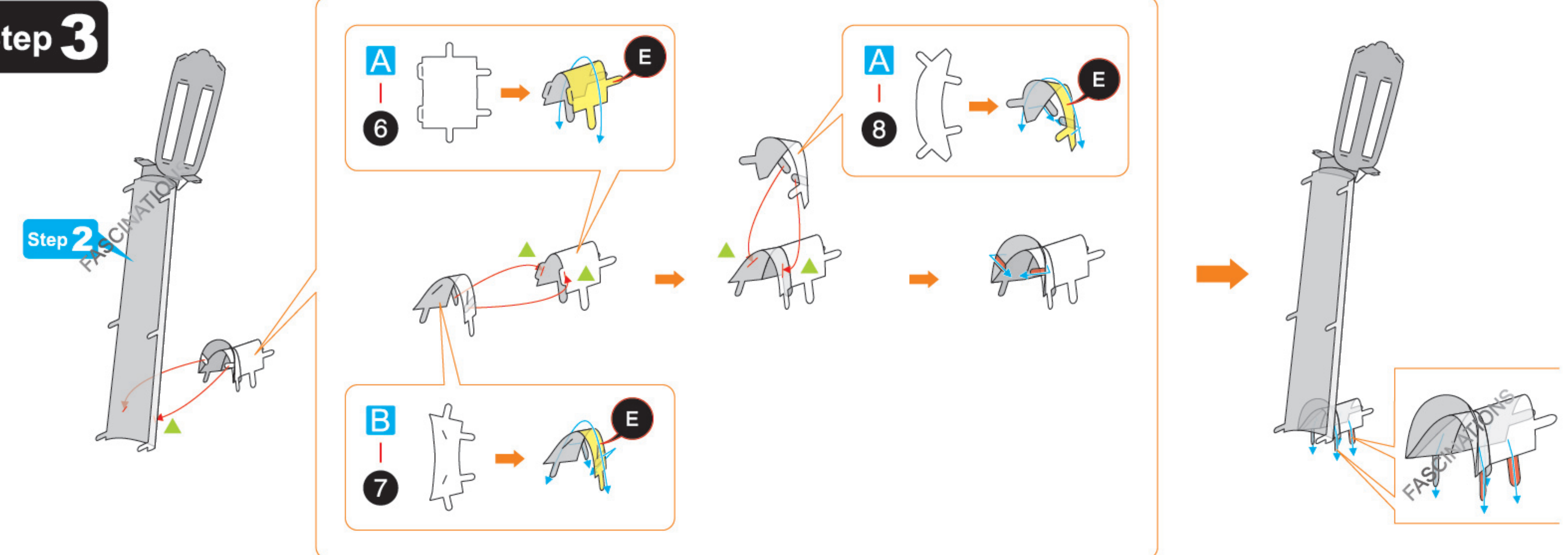
A-1



Step 2



Step 3



In order to avoid possible injury from sharp edges, please carefully discard the metal sheets after parts have been removed.

