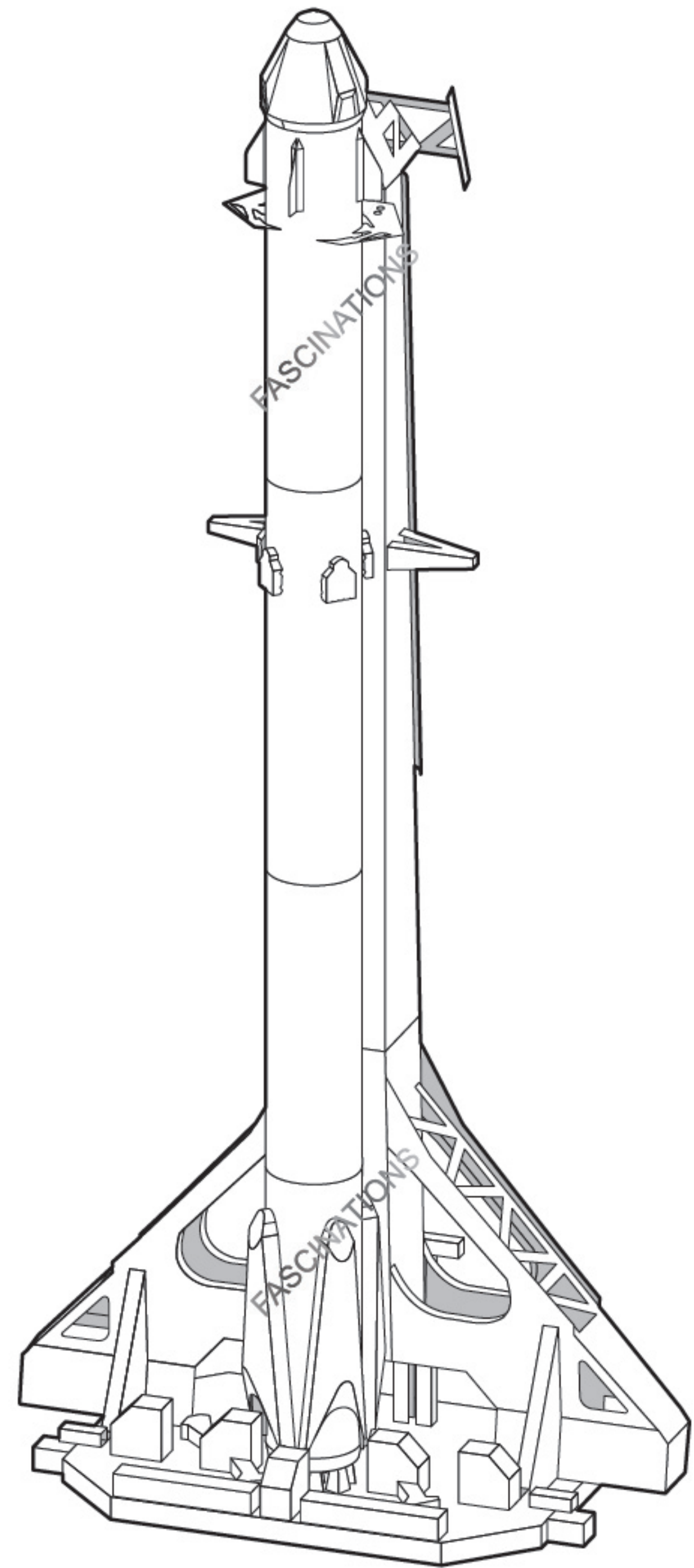


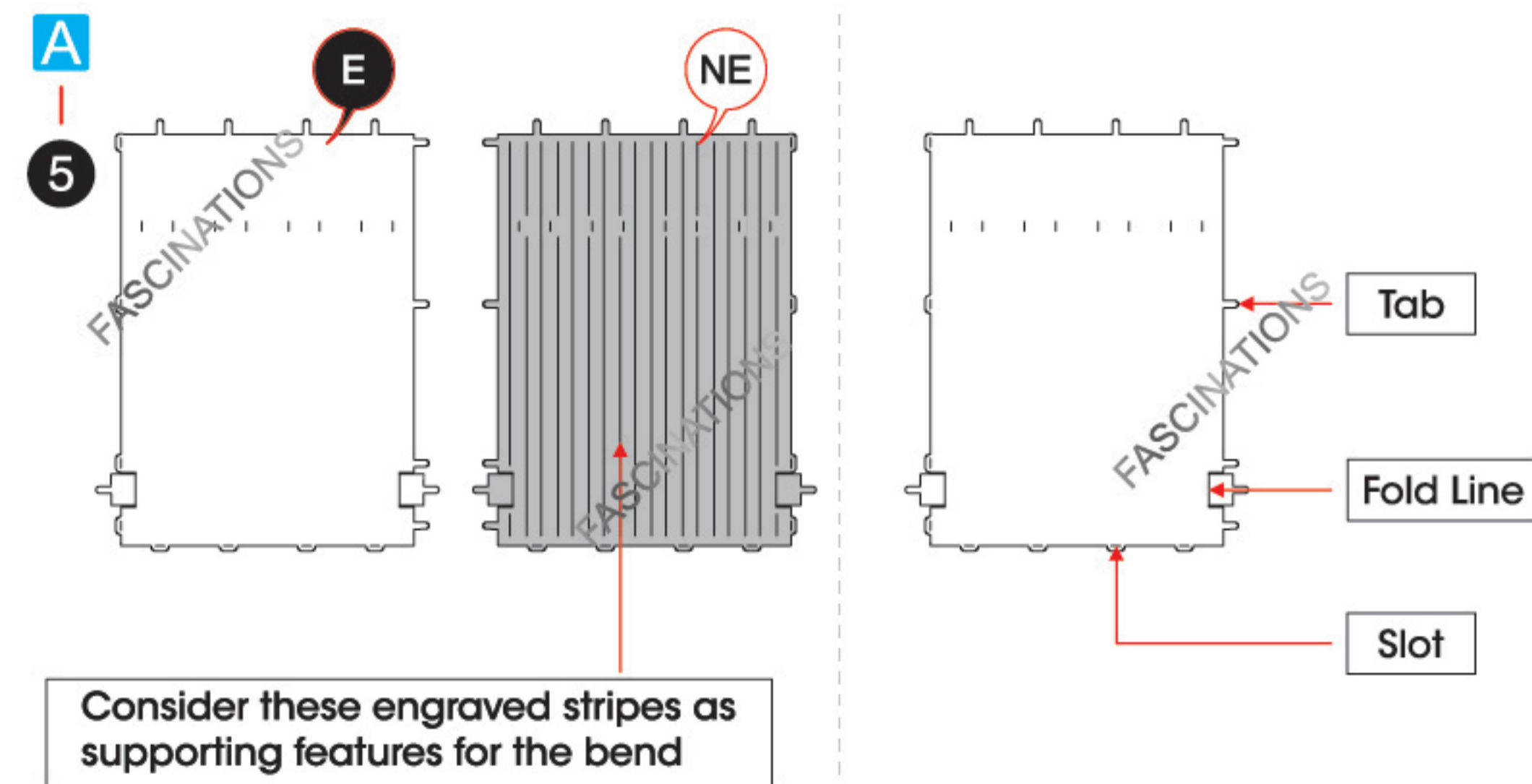


It is highly recommended that you visit www.metalearth.com/360/ME1051 to see the completed model before assembling your own

ME1051 FALCON 9



TO CREATE THE BEST CONNECTIONS



Legends:

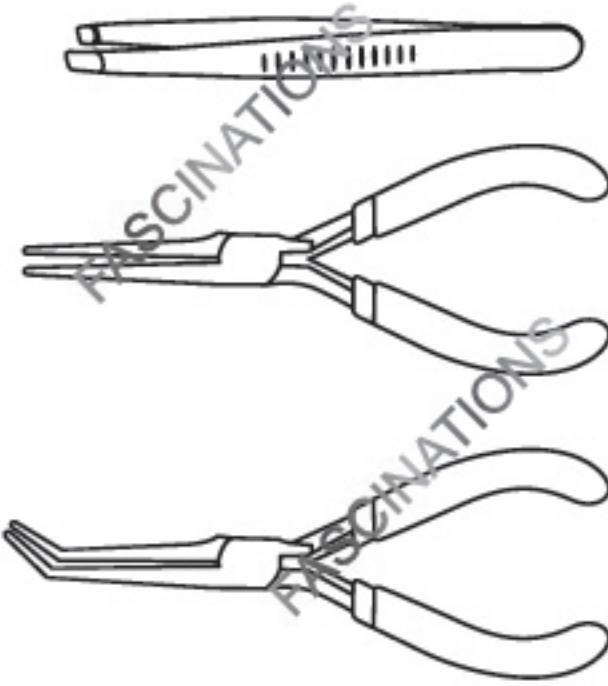
- Engraved/ Color side
- Non - engraved/ Silver side
- Attention point
- Insert tab and bend 90 degrees
- Insert tab and twist 90 degrees

Recommended tools:

- Wire cutters: helpful for taking parts from the metal sheets.



- Tweezers or needle nose pliers: helpful for folding parts, bending and twisting tabs.



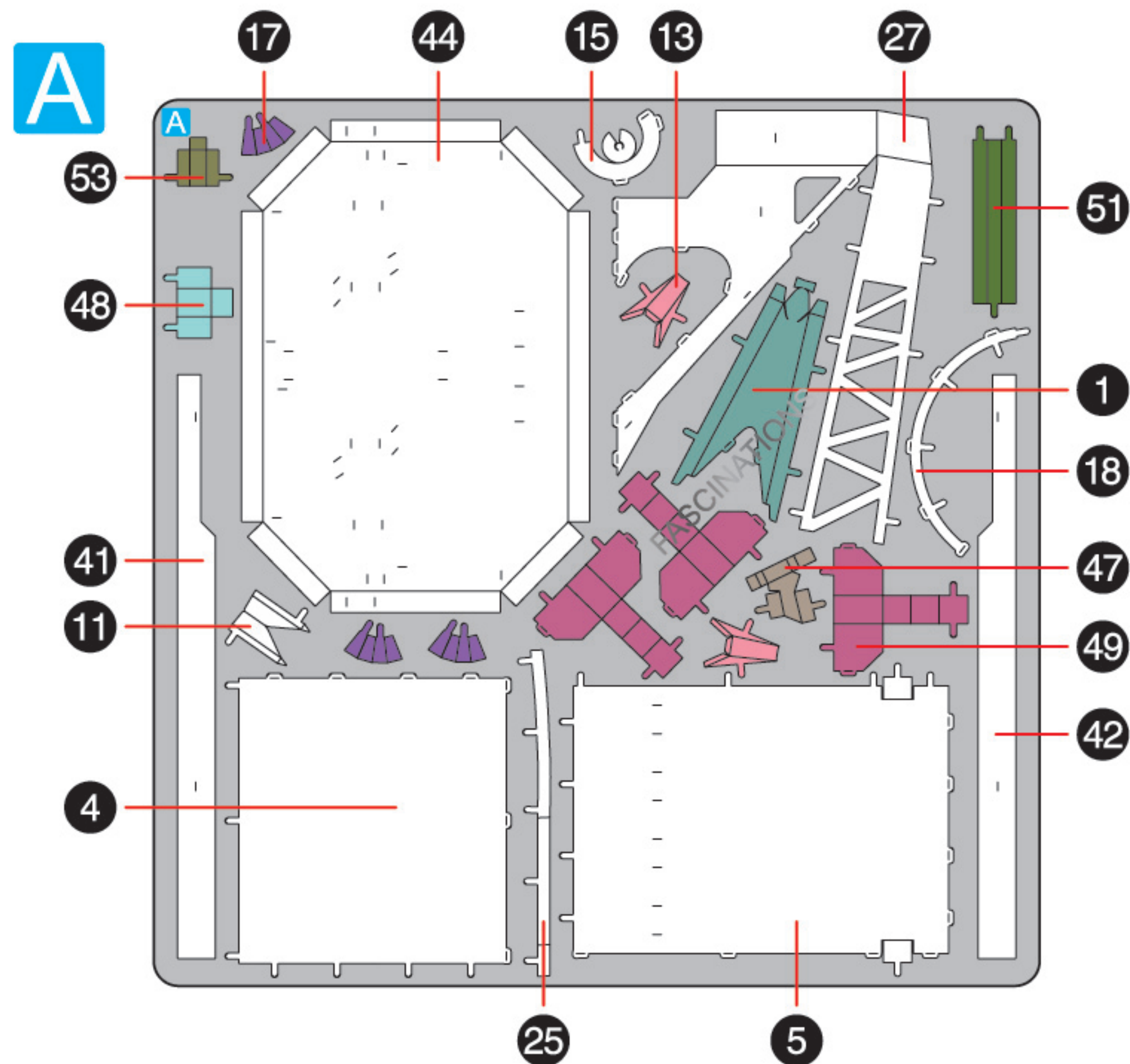
Assembly tip:

If needed, slightly twist tabs to hold parts together then untwist and bend them down for a nice finish.

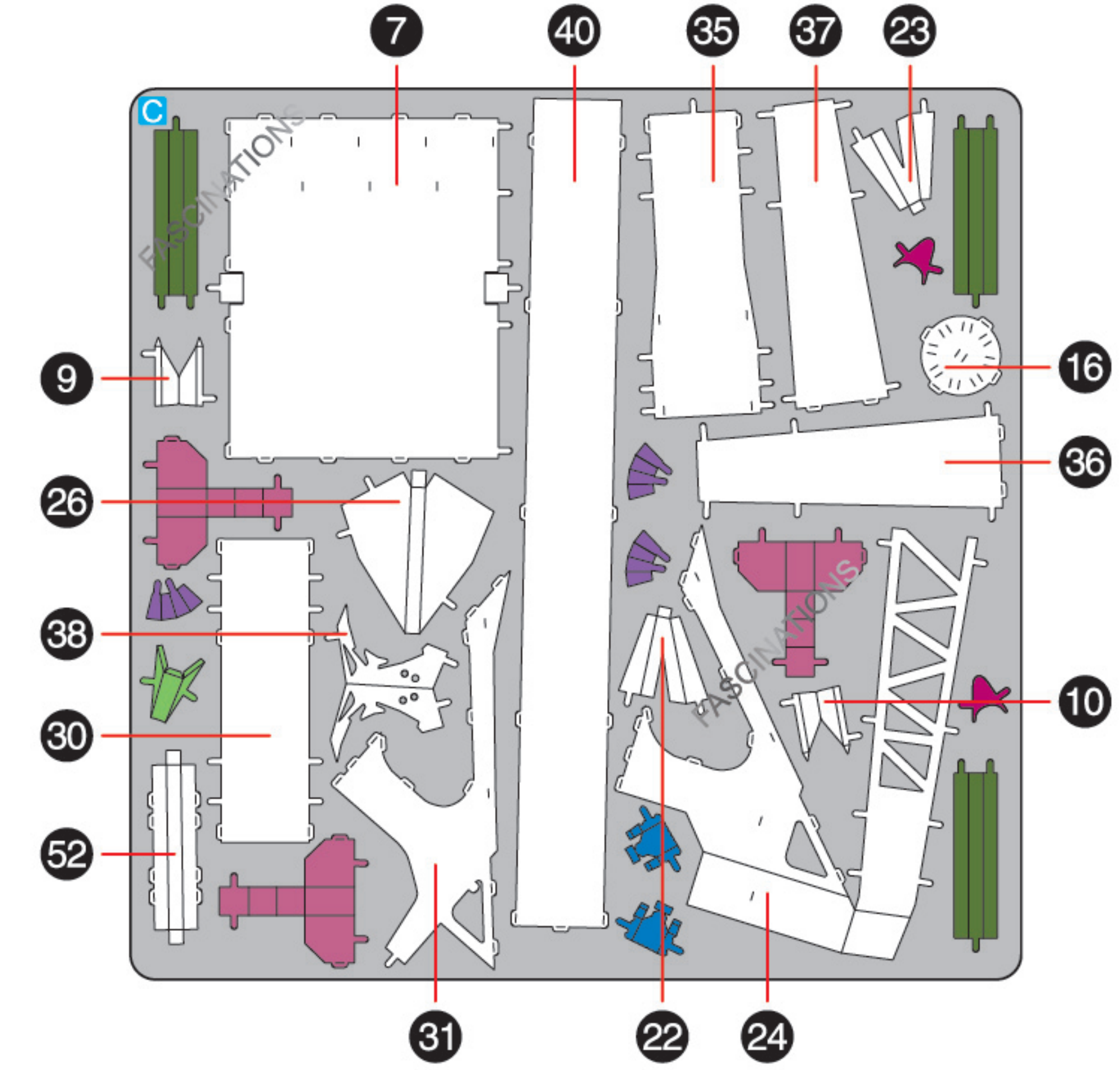
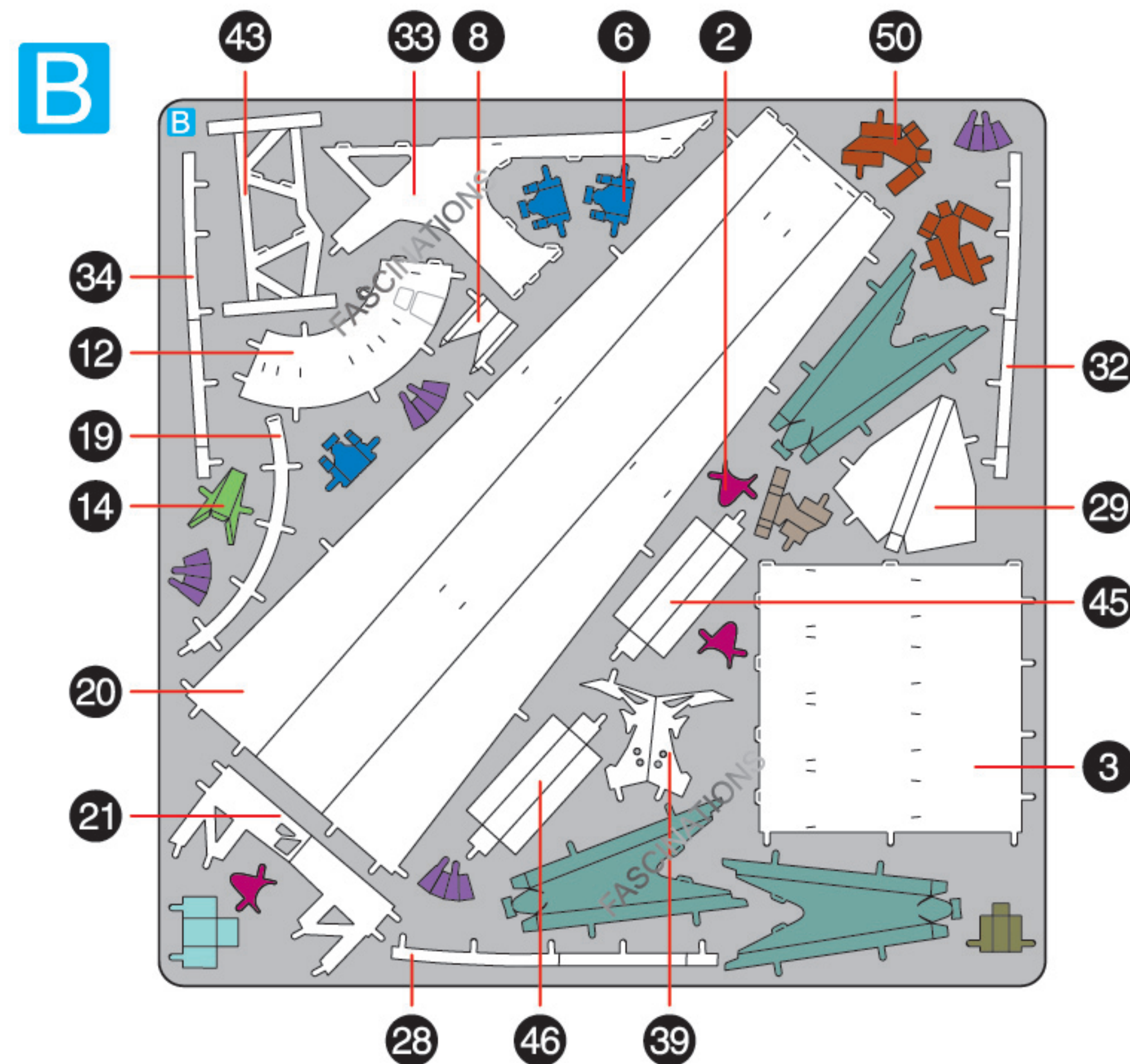
Yellow areas should be curled

Red areas should be folded

METAL SHEETS

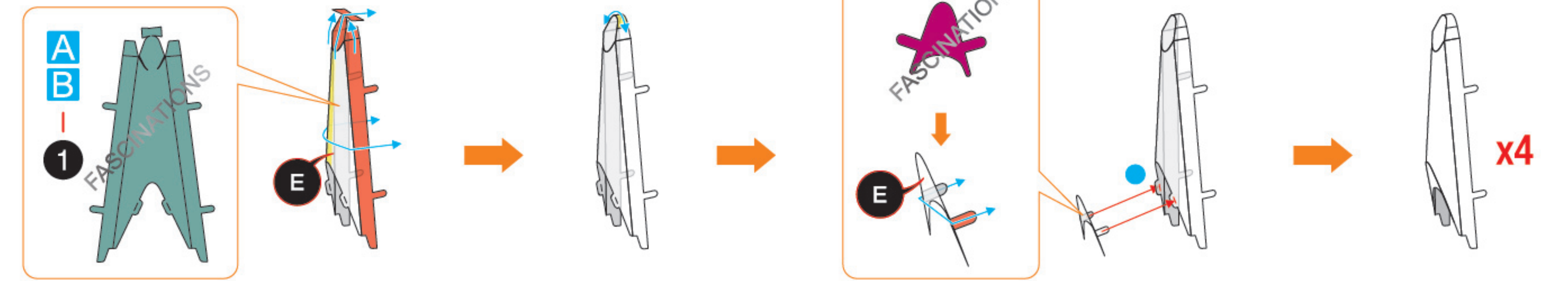


Parts with same color are duplicates

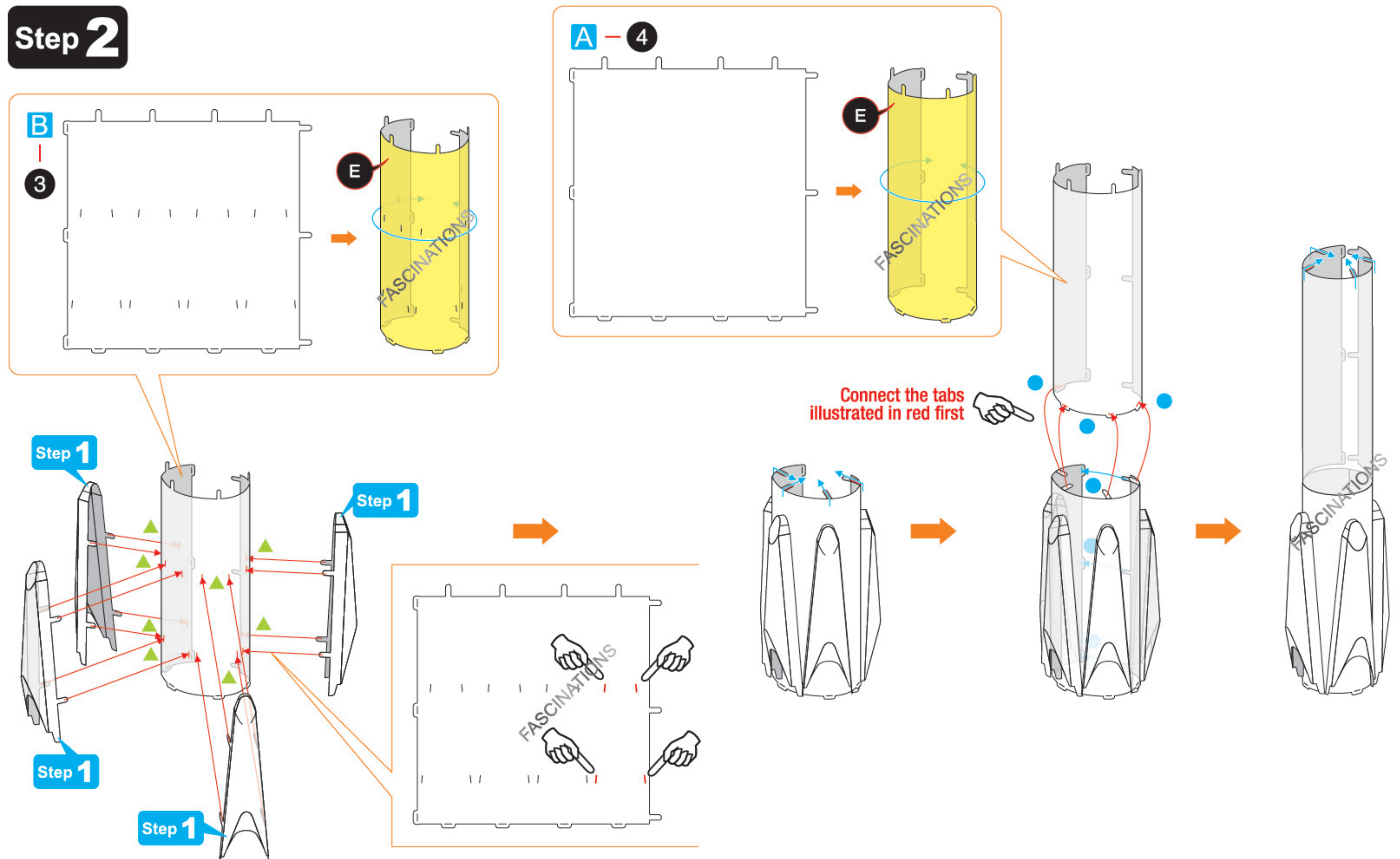


ASSEMBLY STEPS

Step 1

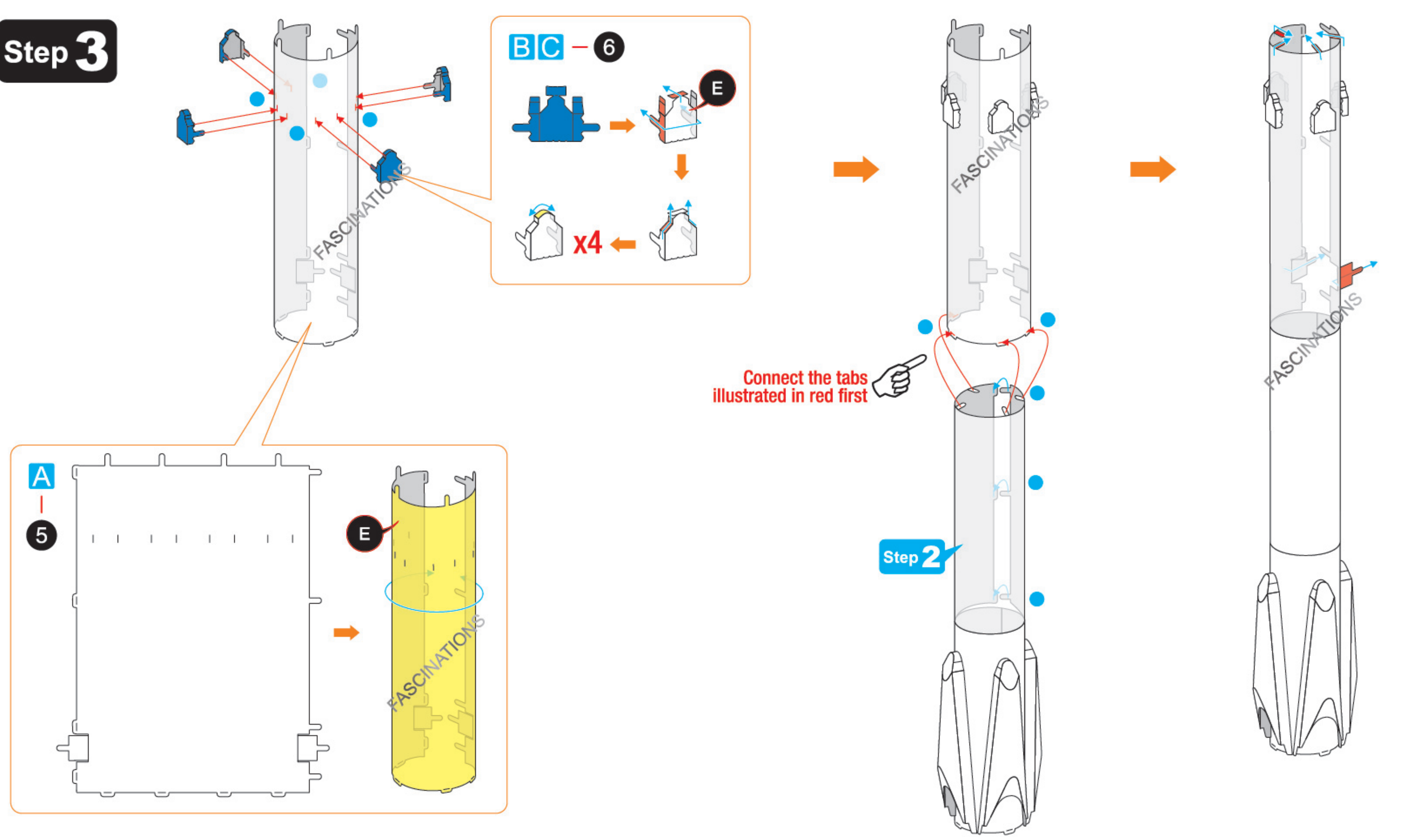


Step 2

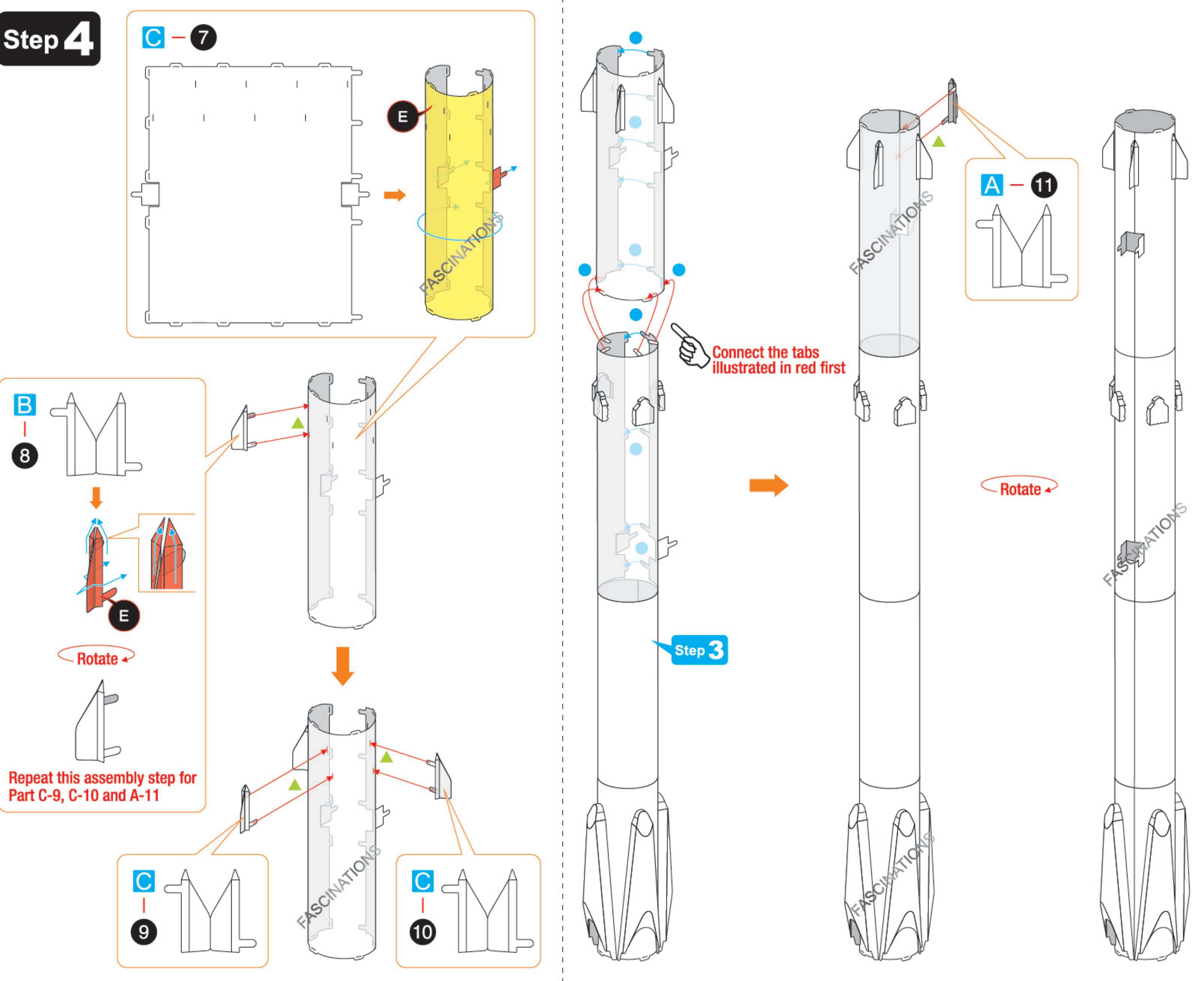


In order to avoid possible injury from sharp edges, please carefully discard the metal sheets after parts have been removed.

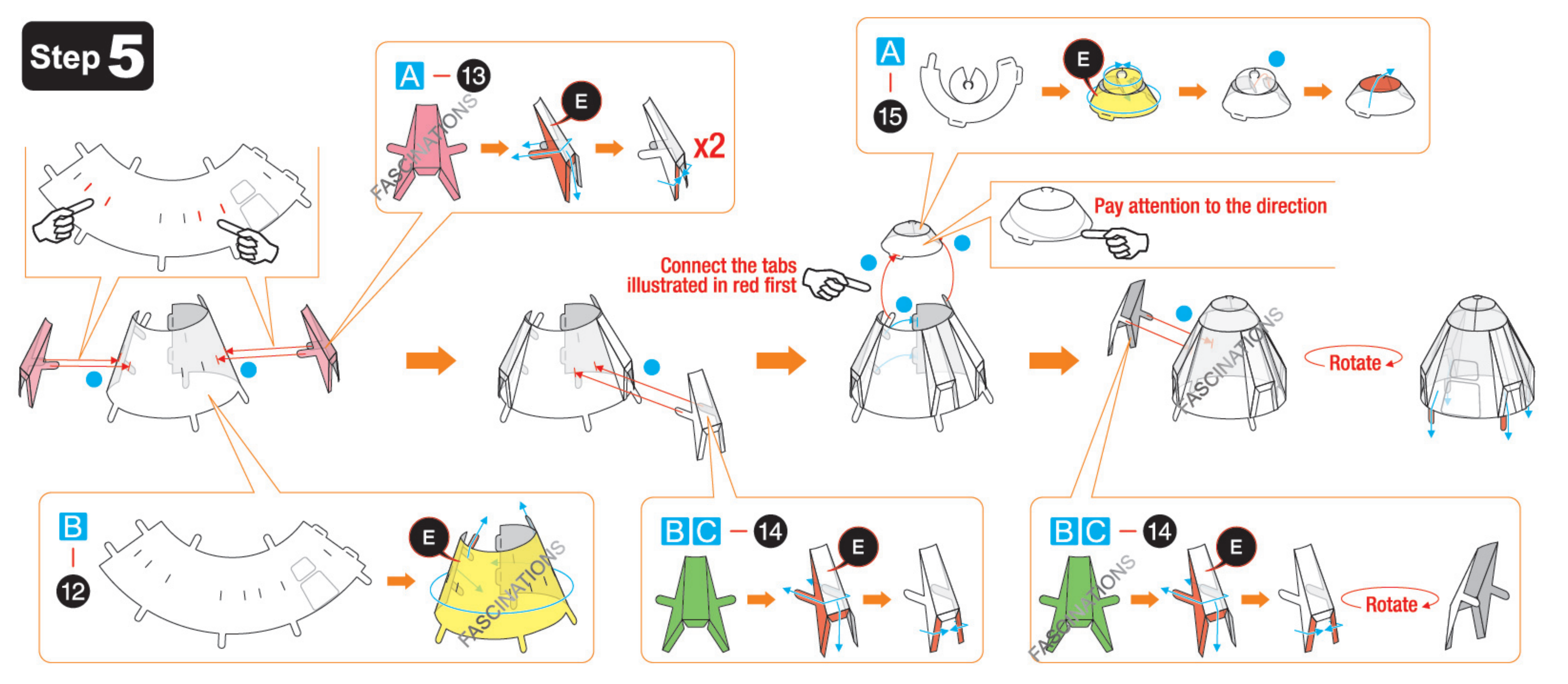
Step 3



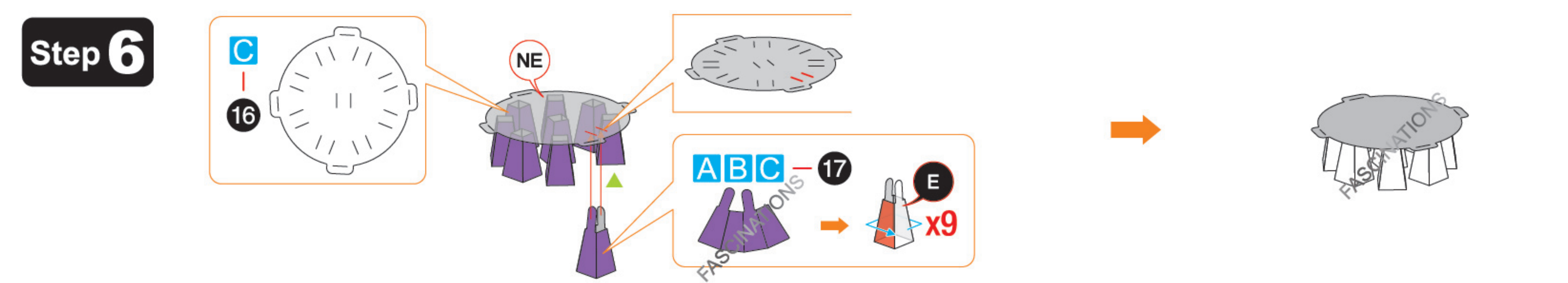
Step 4



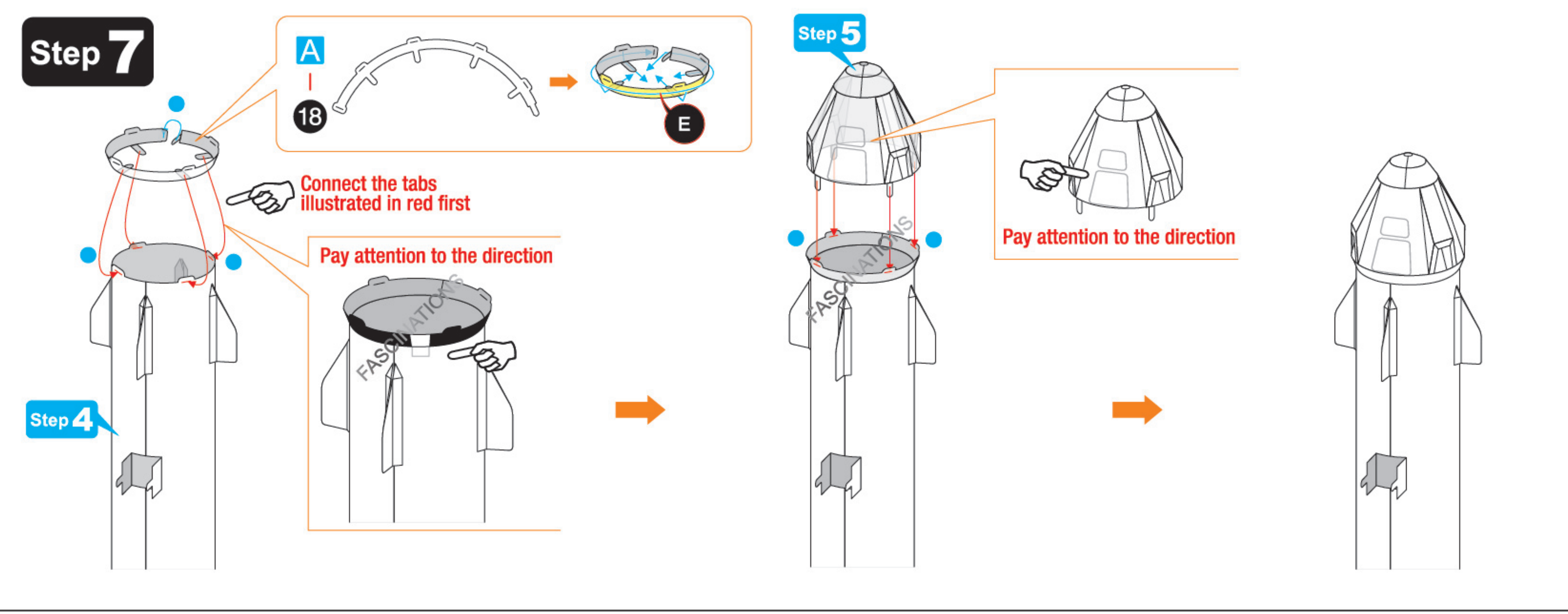
Step 5



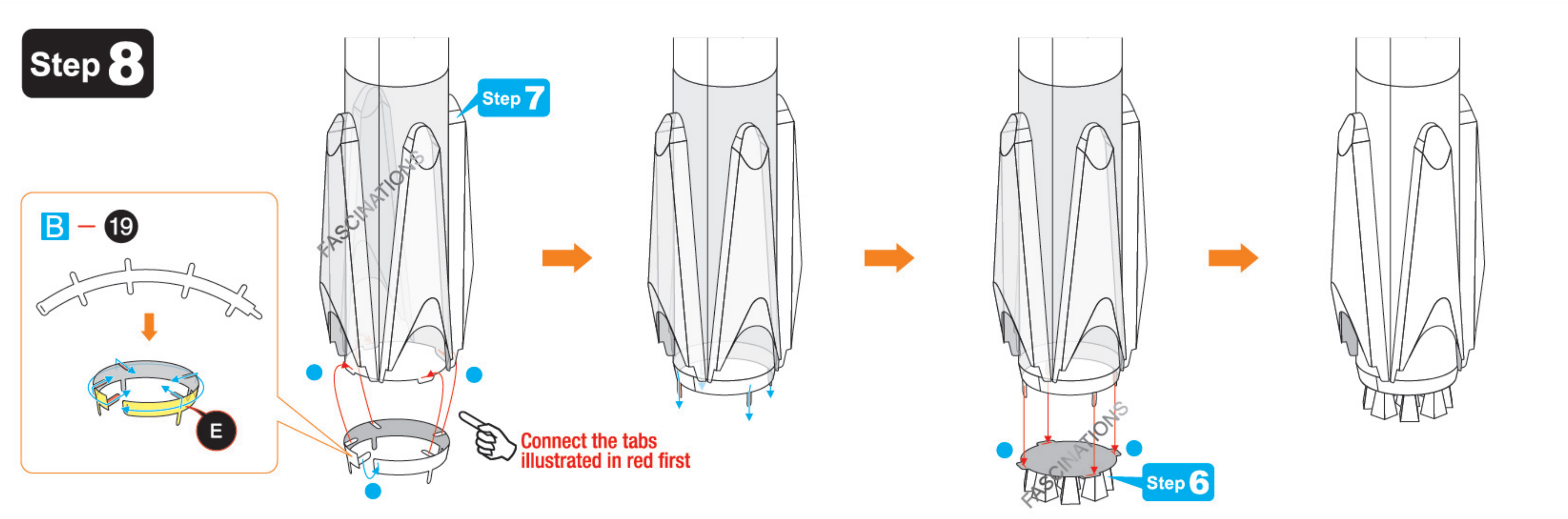
Step 6



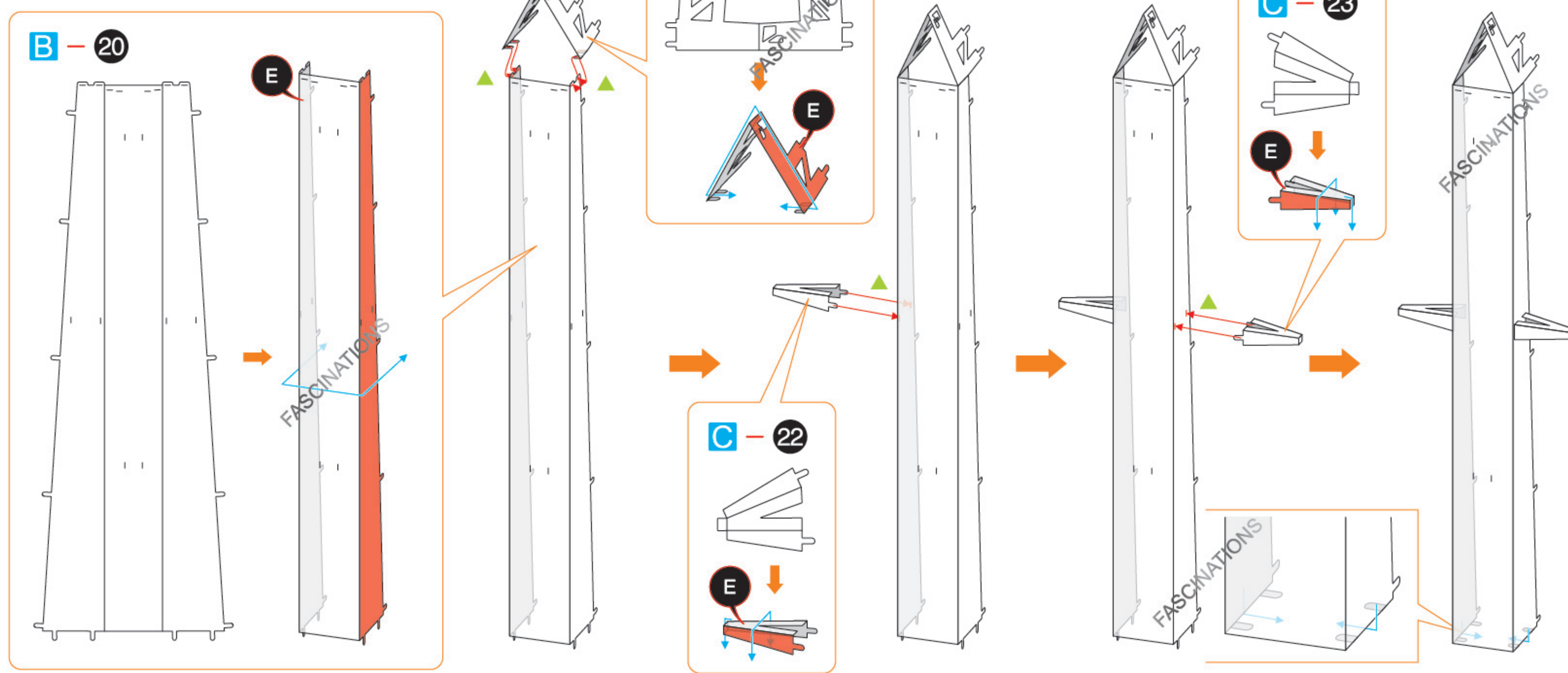
Step 7



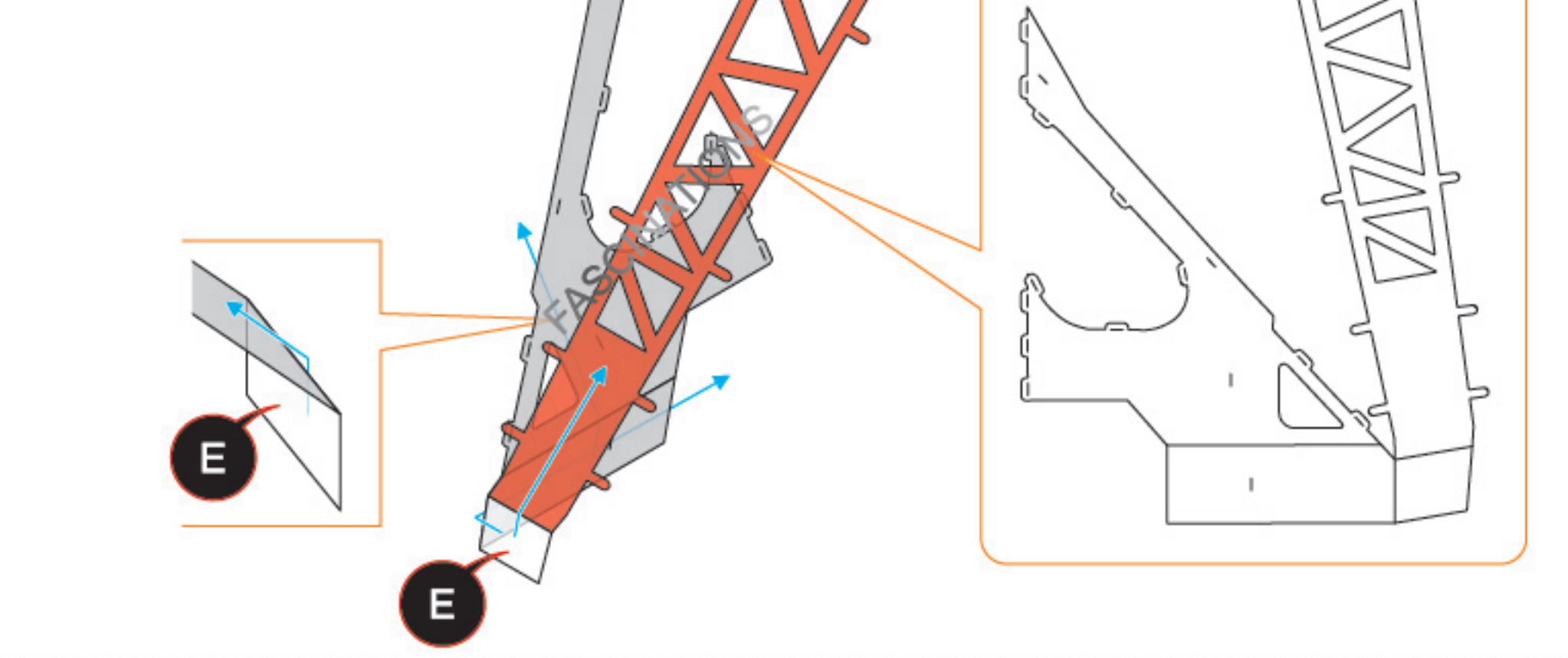
Step 8



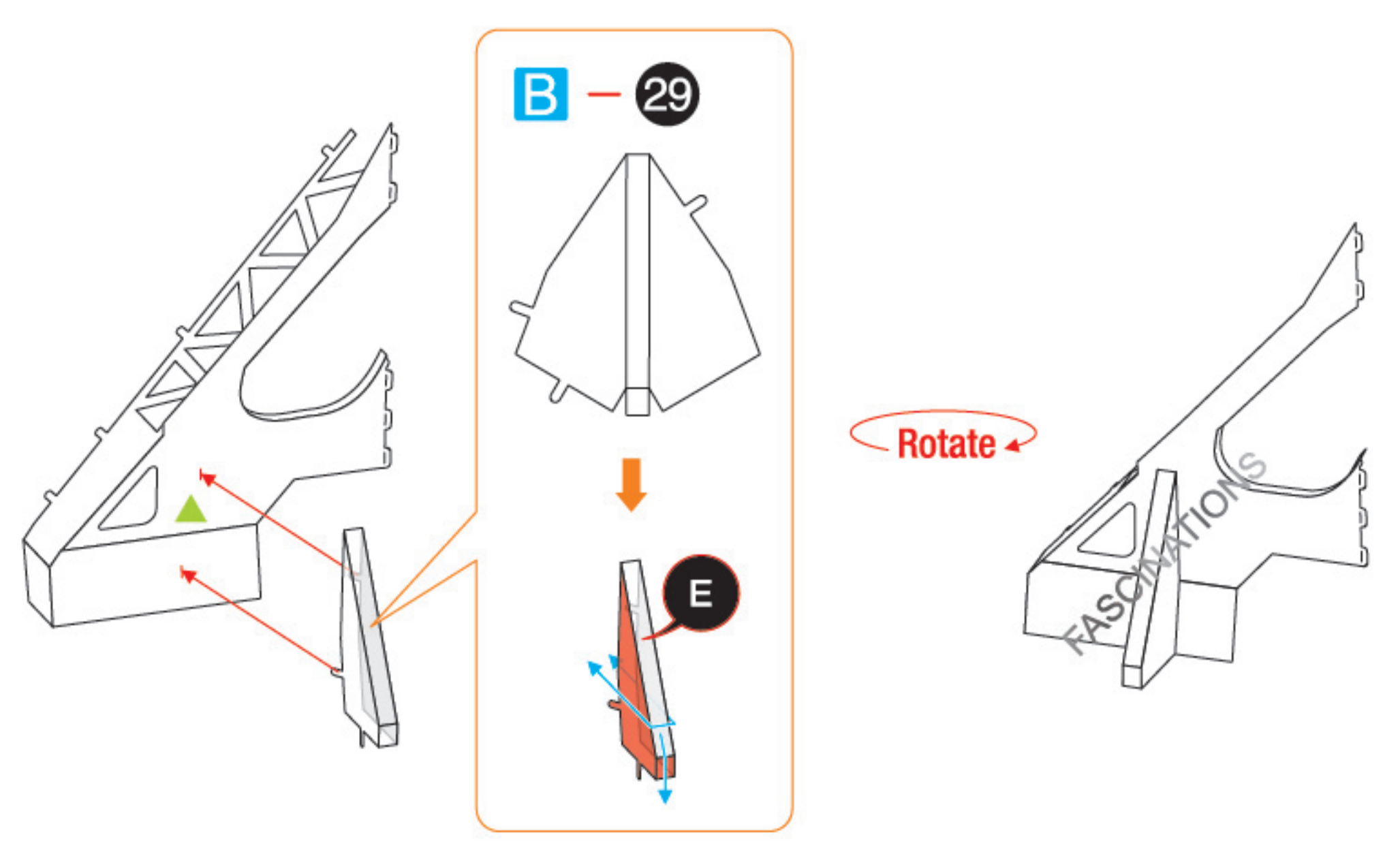
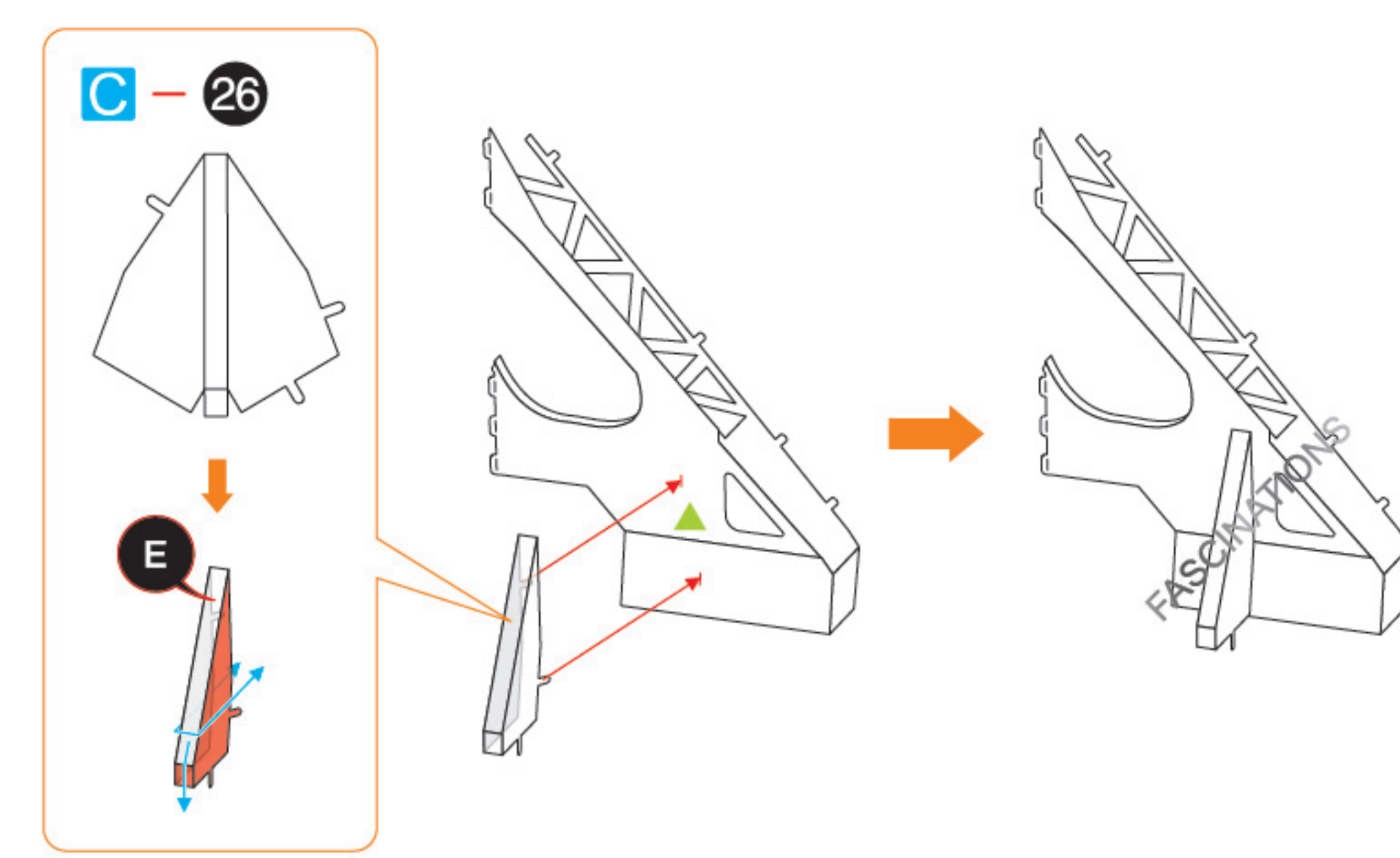
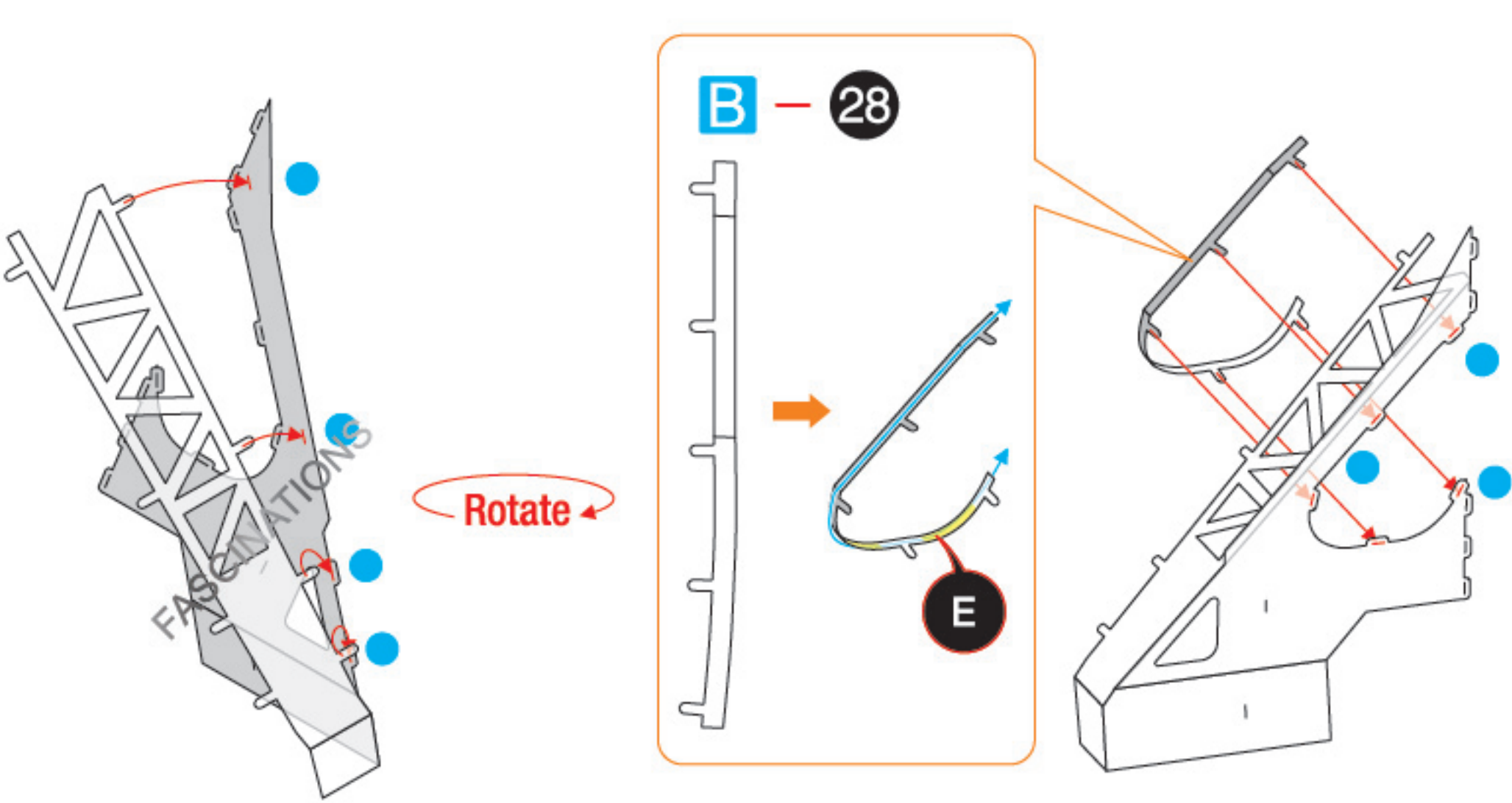
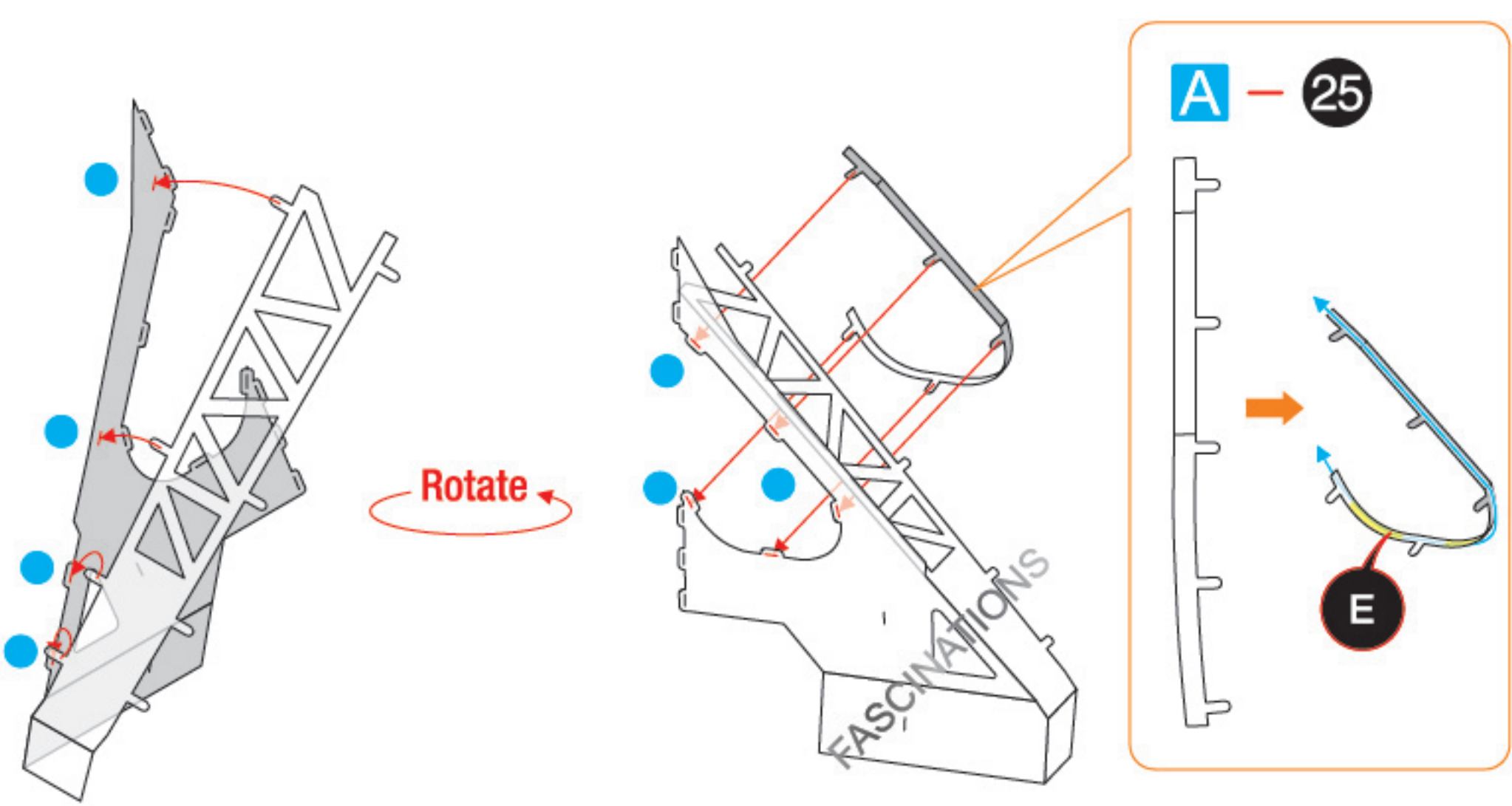
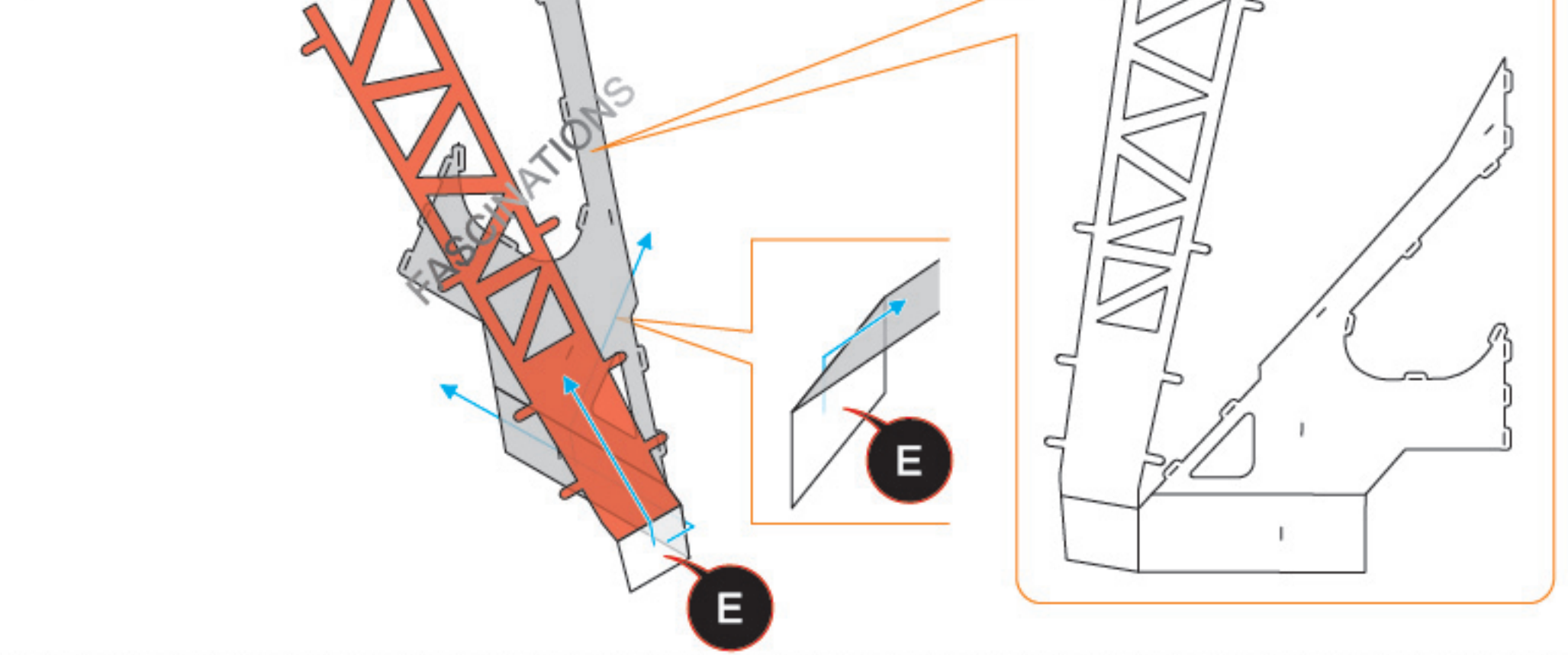
Step 9



Step 10



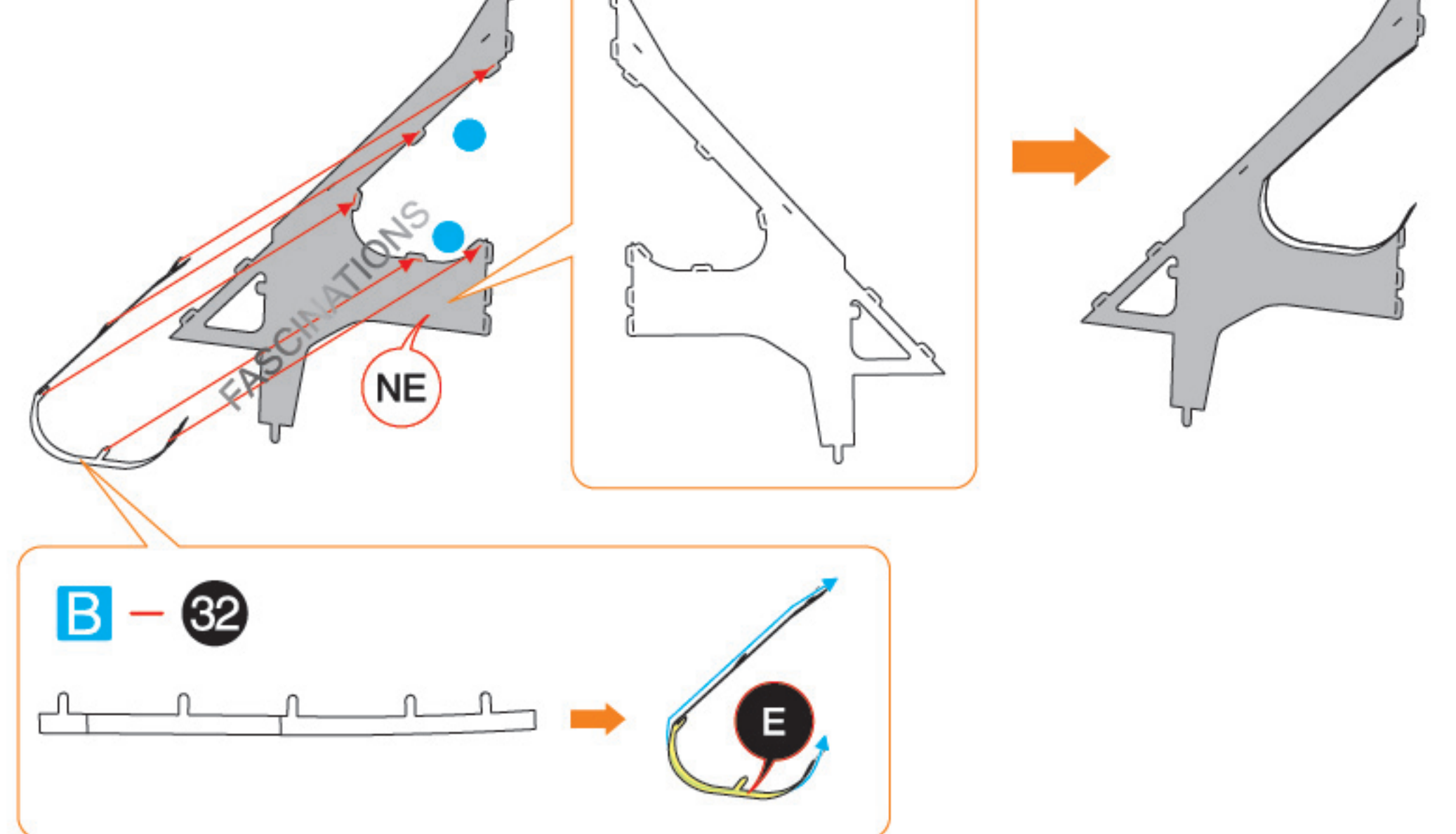
Step 11



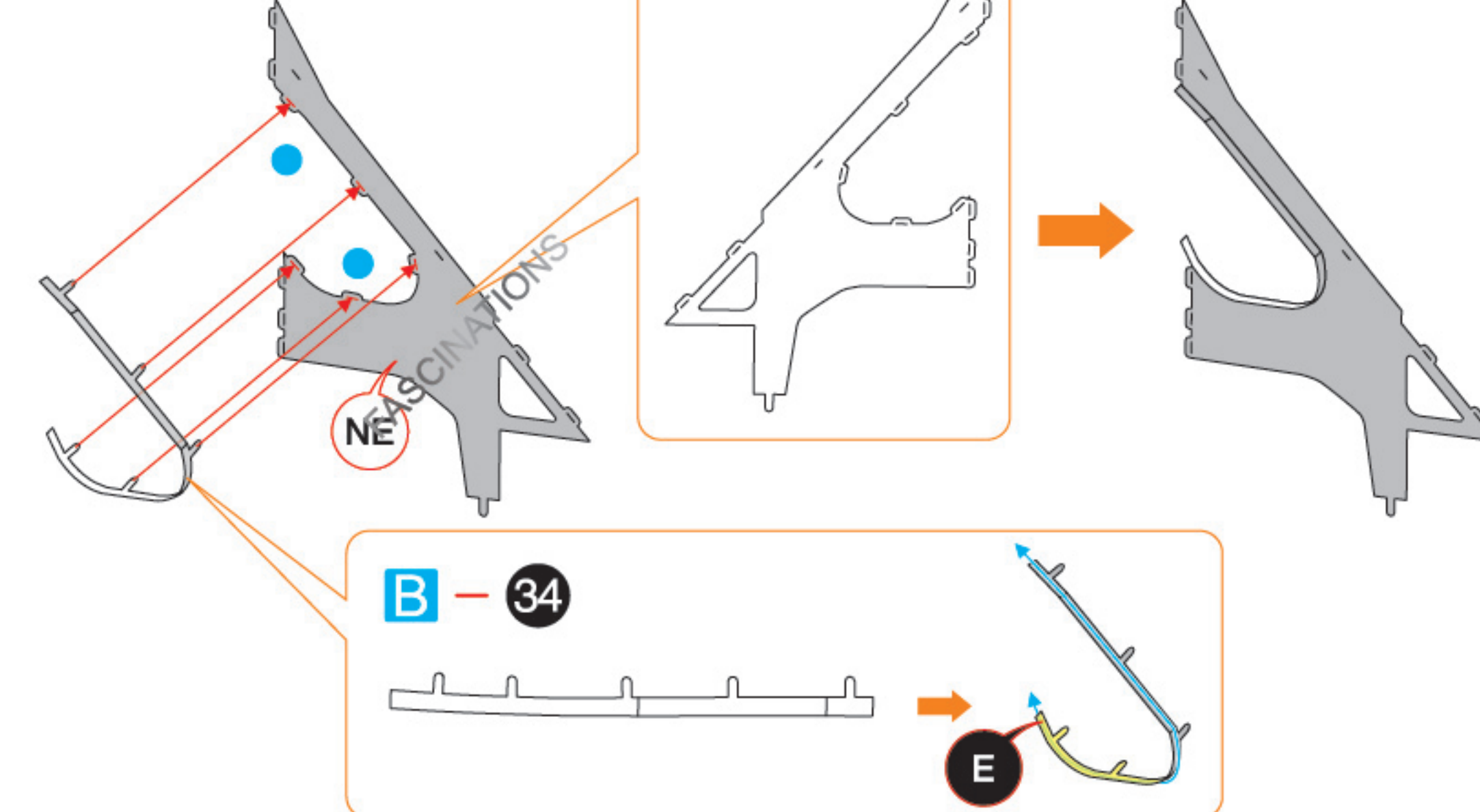
Step 12



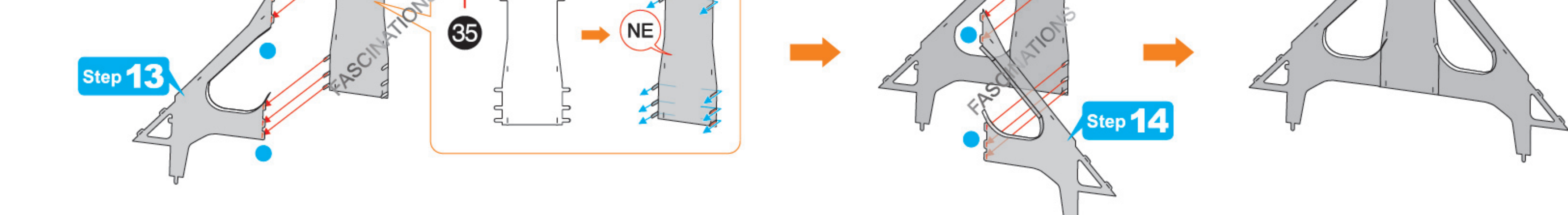
Step 13



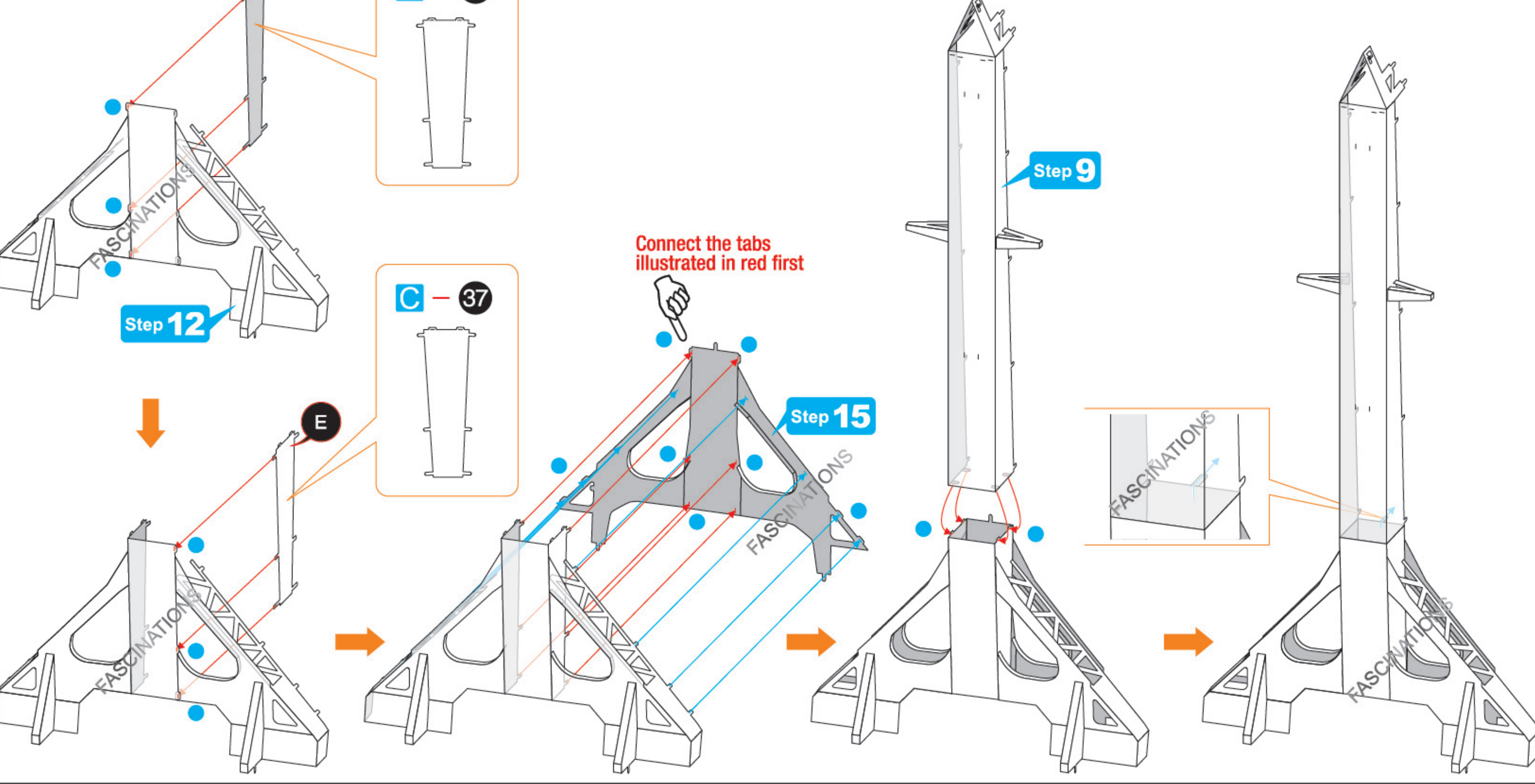
Step 14



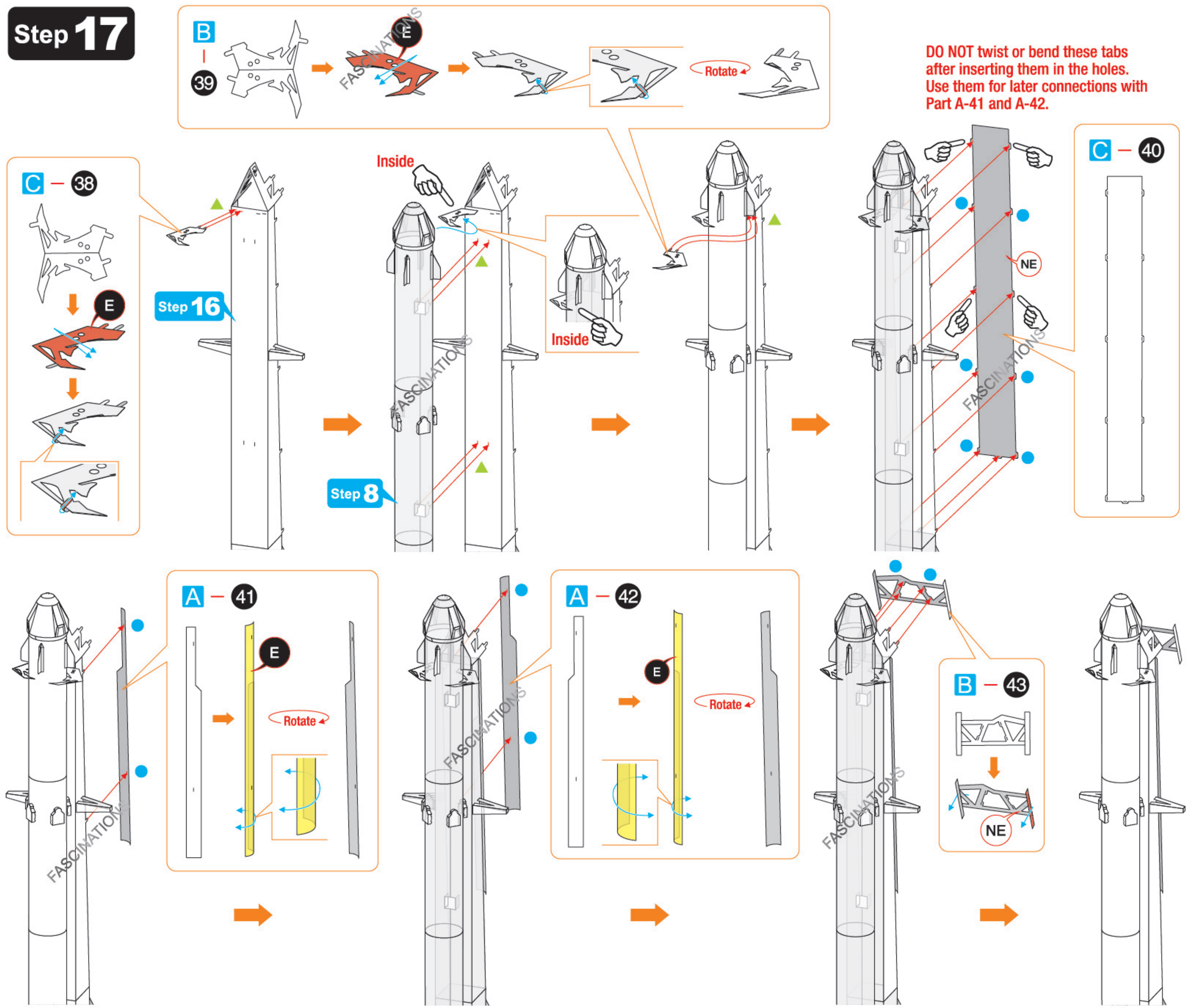
Step 15



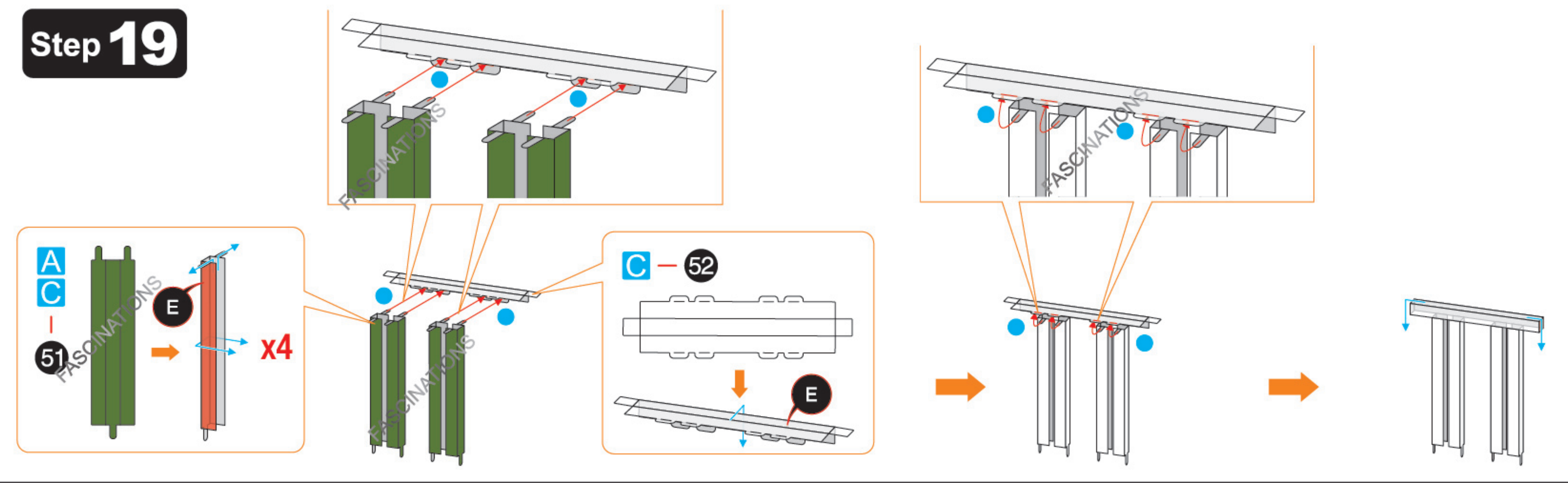
Step 16



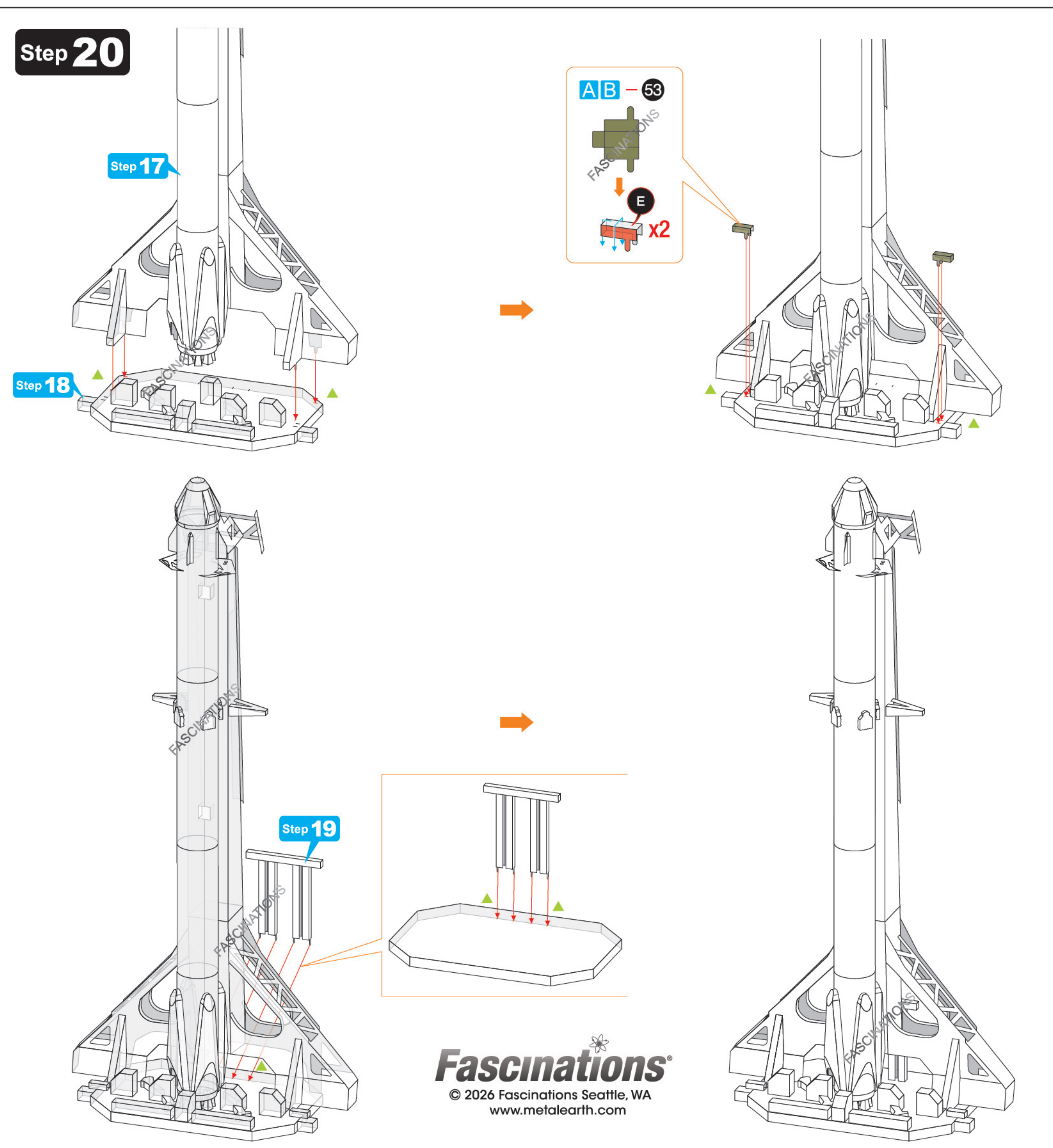
Step 17



Step 19



Step 20



Step 18

