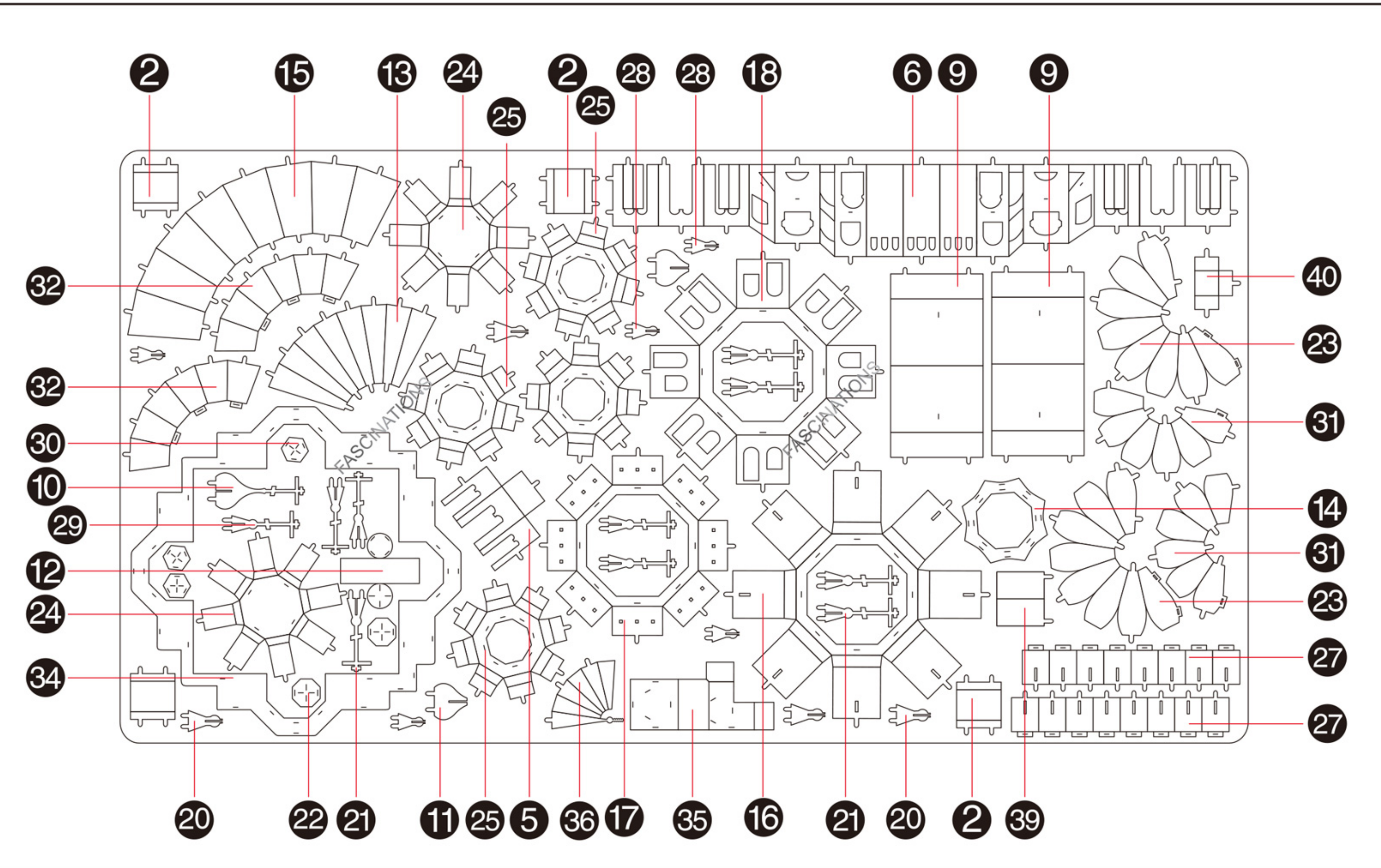
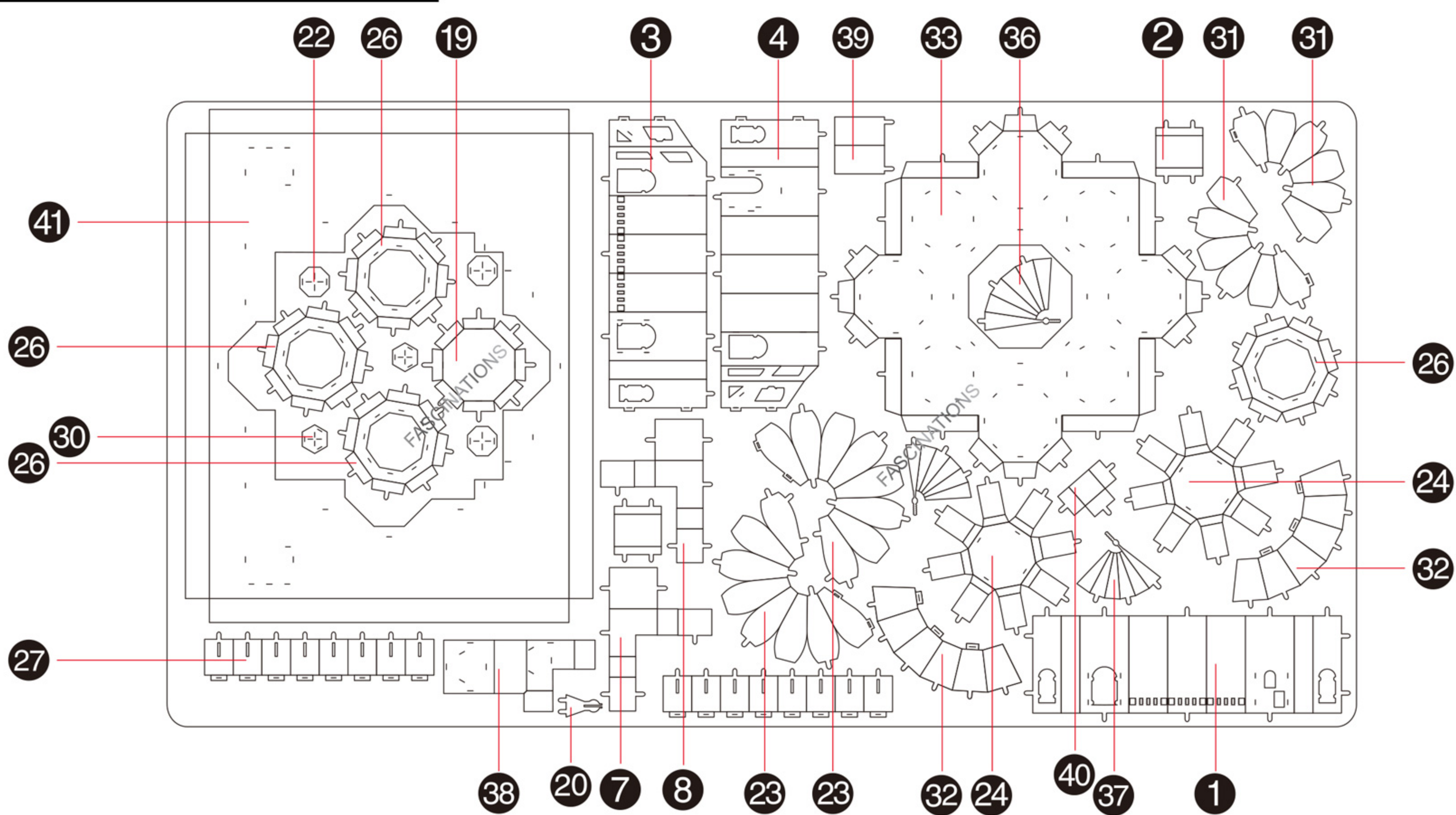




It is highly recommended that you visit www.metal-earth.com/360/icx006 to see the completed model before assembling your own

Go to www.metal-earth.com/360/icx006 to see the zoomable PDF version of this instruction sheet

METAL SHEETS



In order to avoid possible injury from sharp edges, please carefully discard the metal sheets after parts have been removed

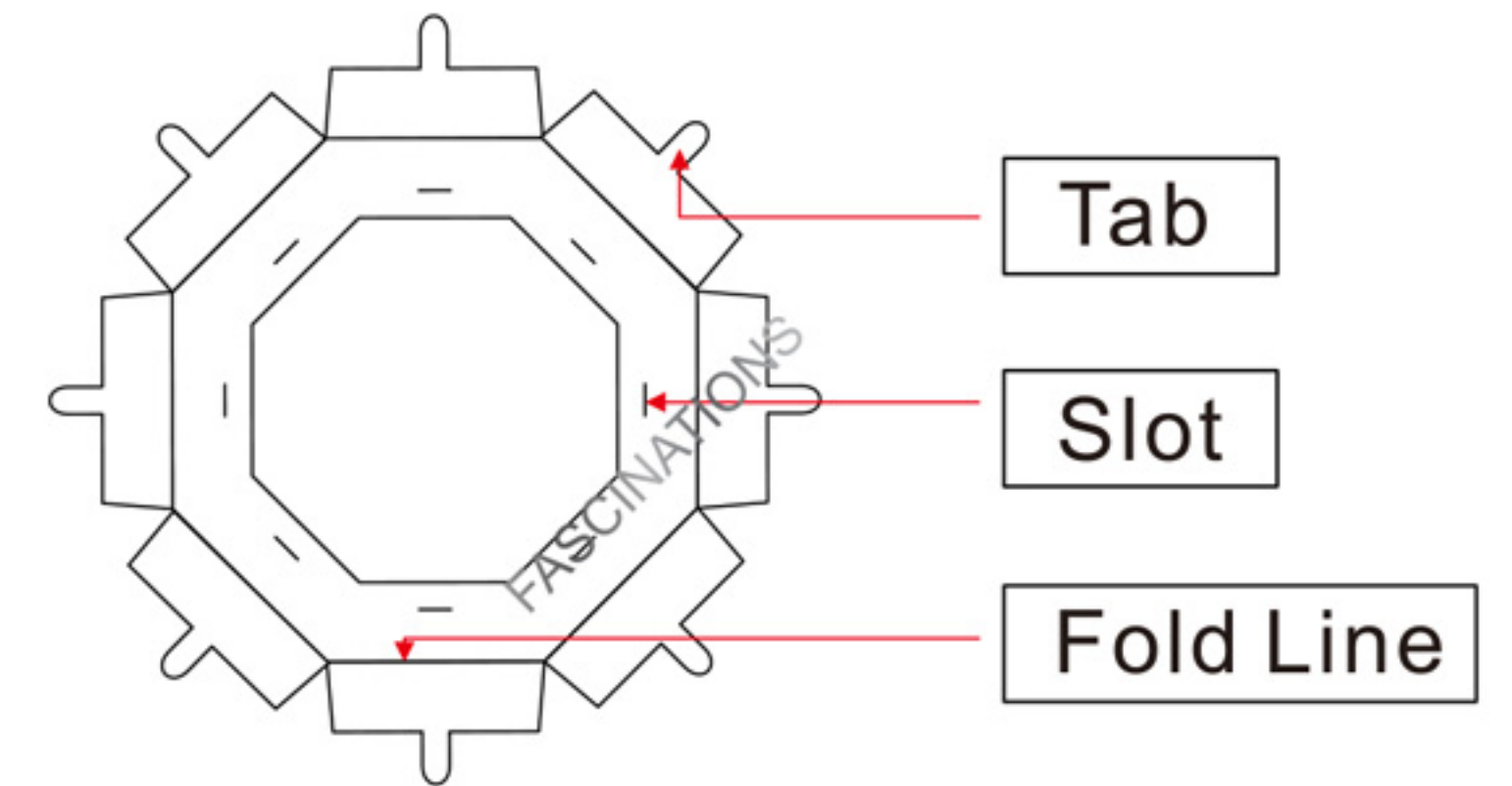
ICX006



Saint Basil's Cathedral



TO CREATE THE BEST CONNECTIONS



Legends:

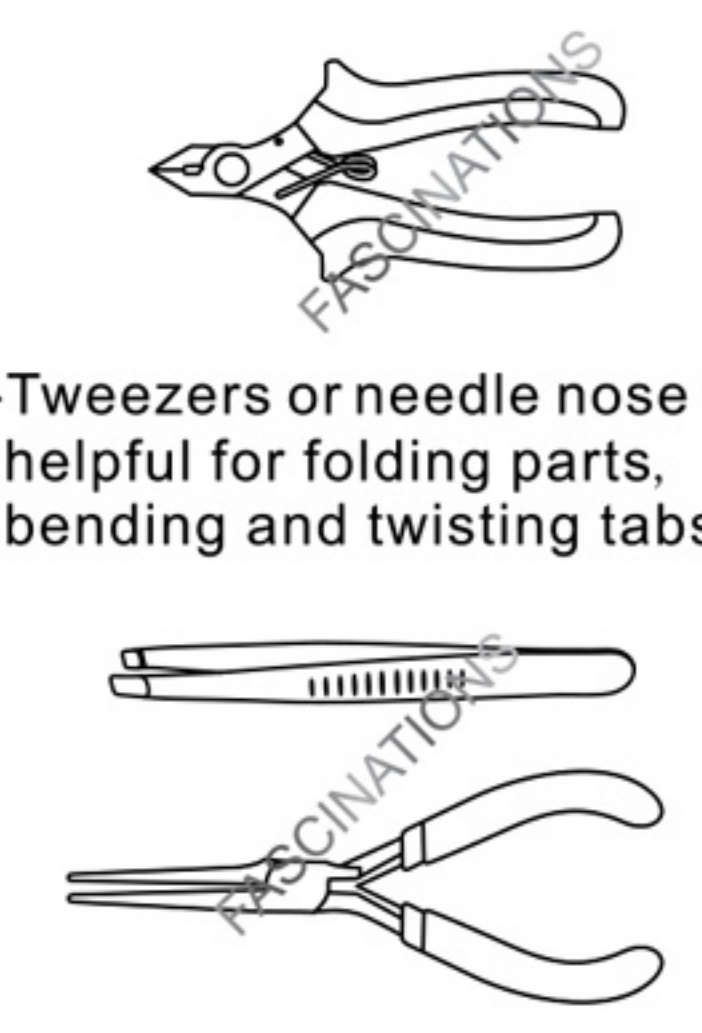
- Engraved side
- Non-engraved side
- Attention point
- Insert tab and bend 90 degrees
- Insert tab and twist 90 degrees

Recommended tools:

- Wire cutters: helpful for taking parts from the metal sheets.
- Tweezers or needle nose pliers: helpful for folding parts, bending and twisting tabs.

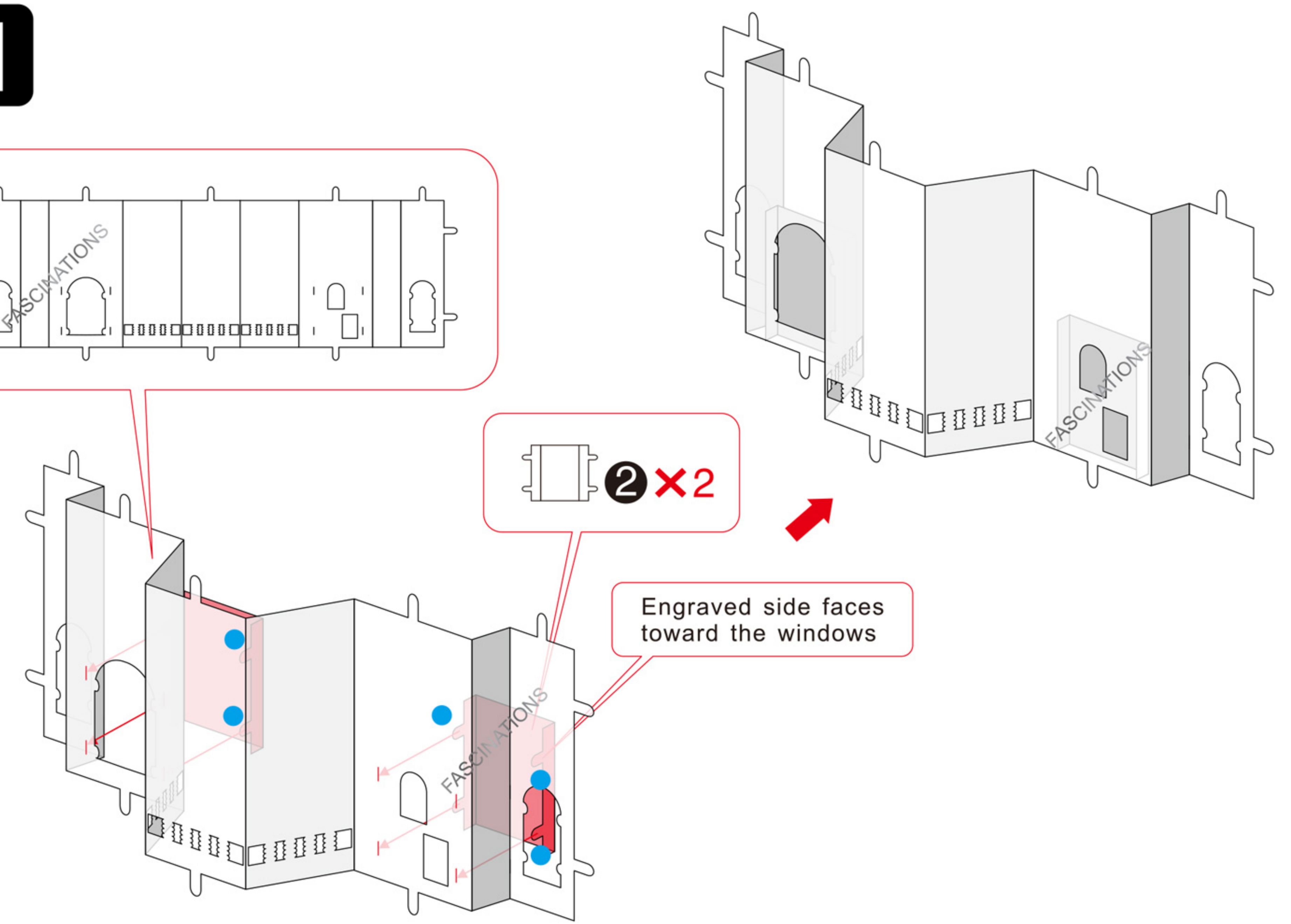
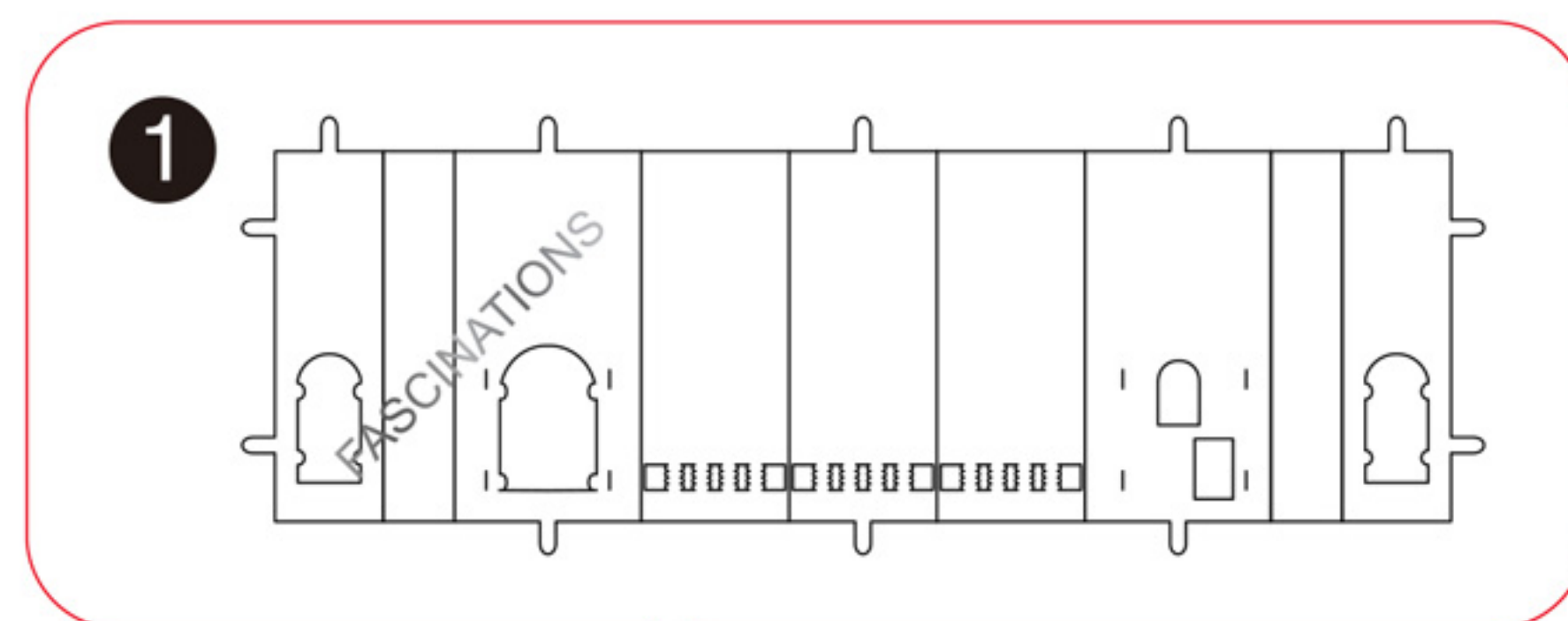
Assembly tip:

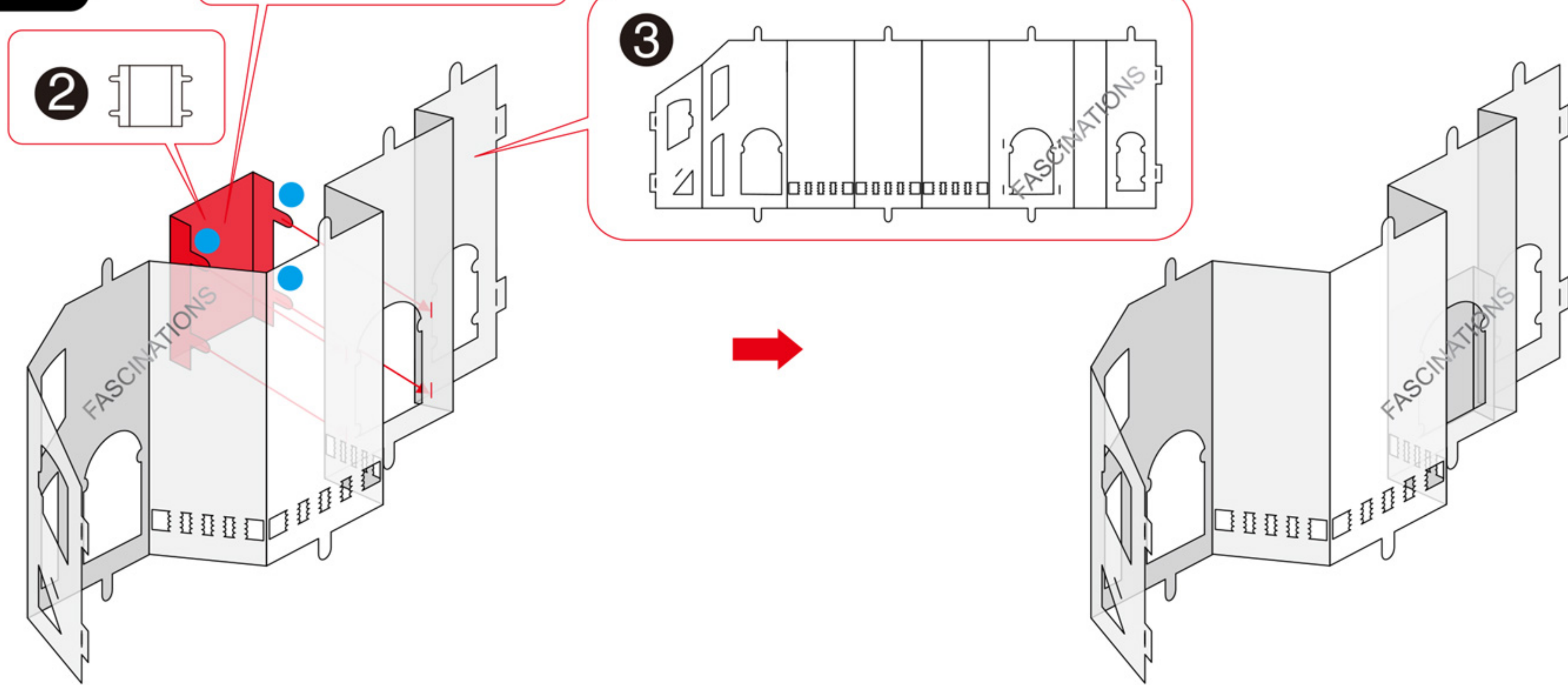
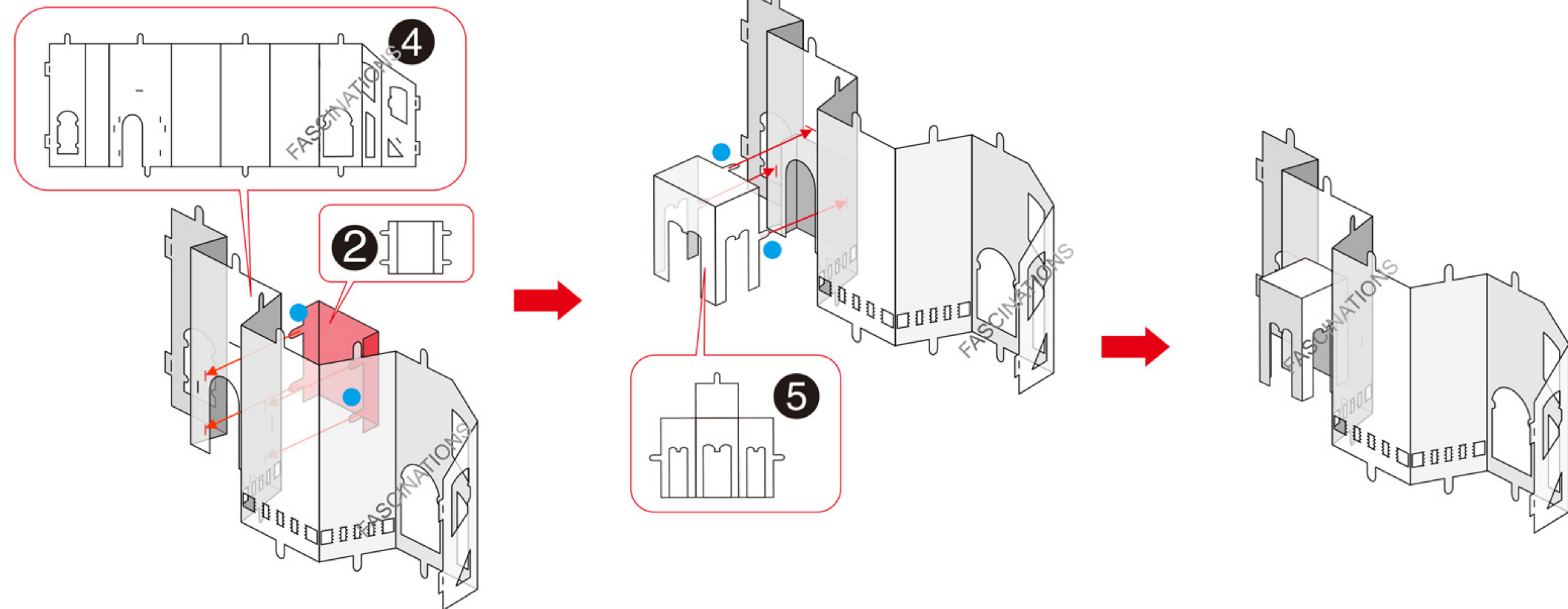
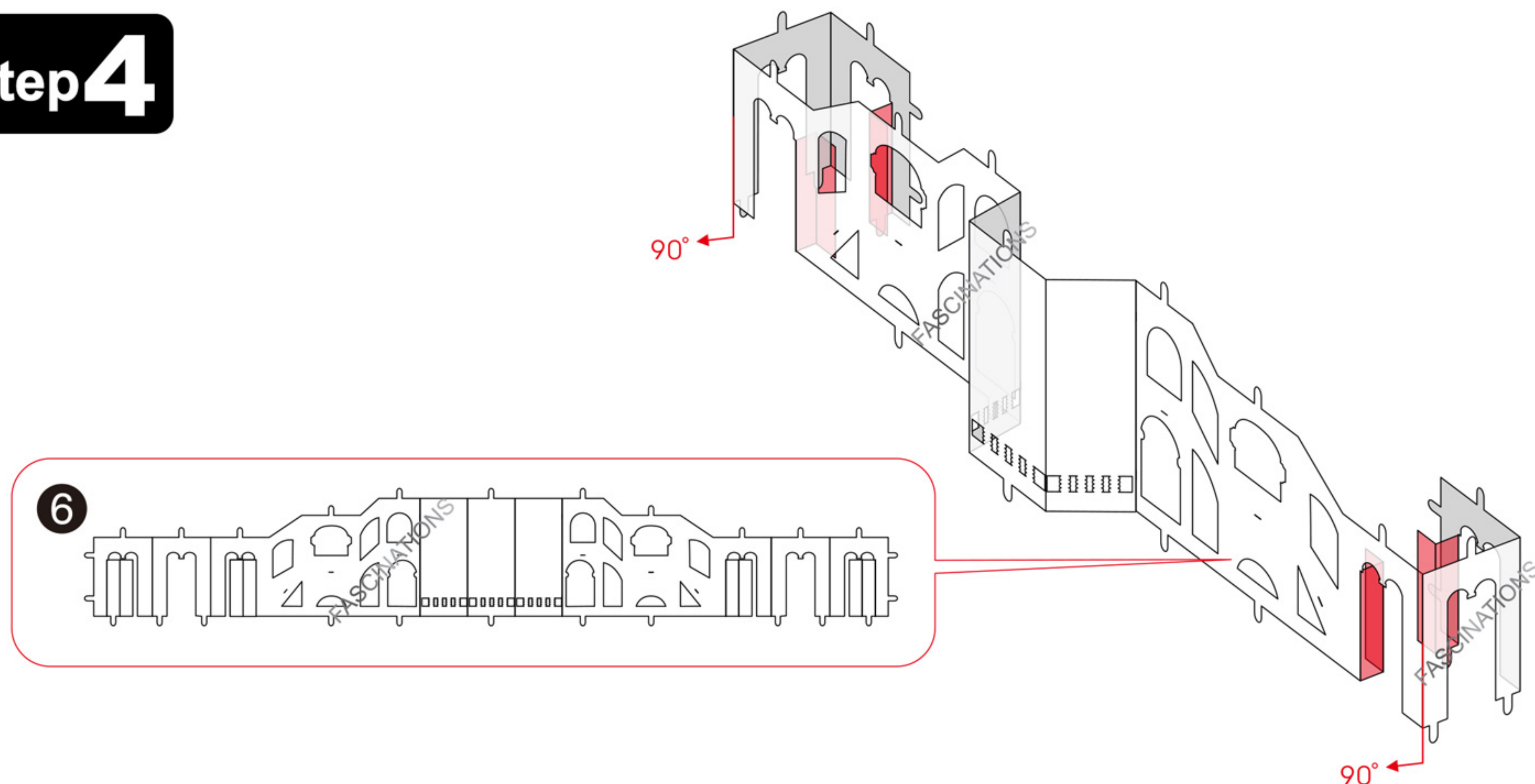
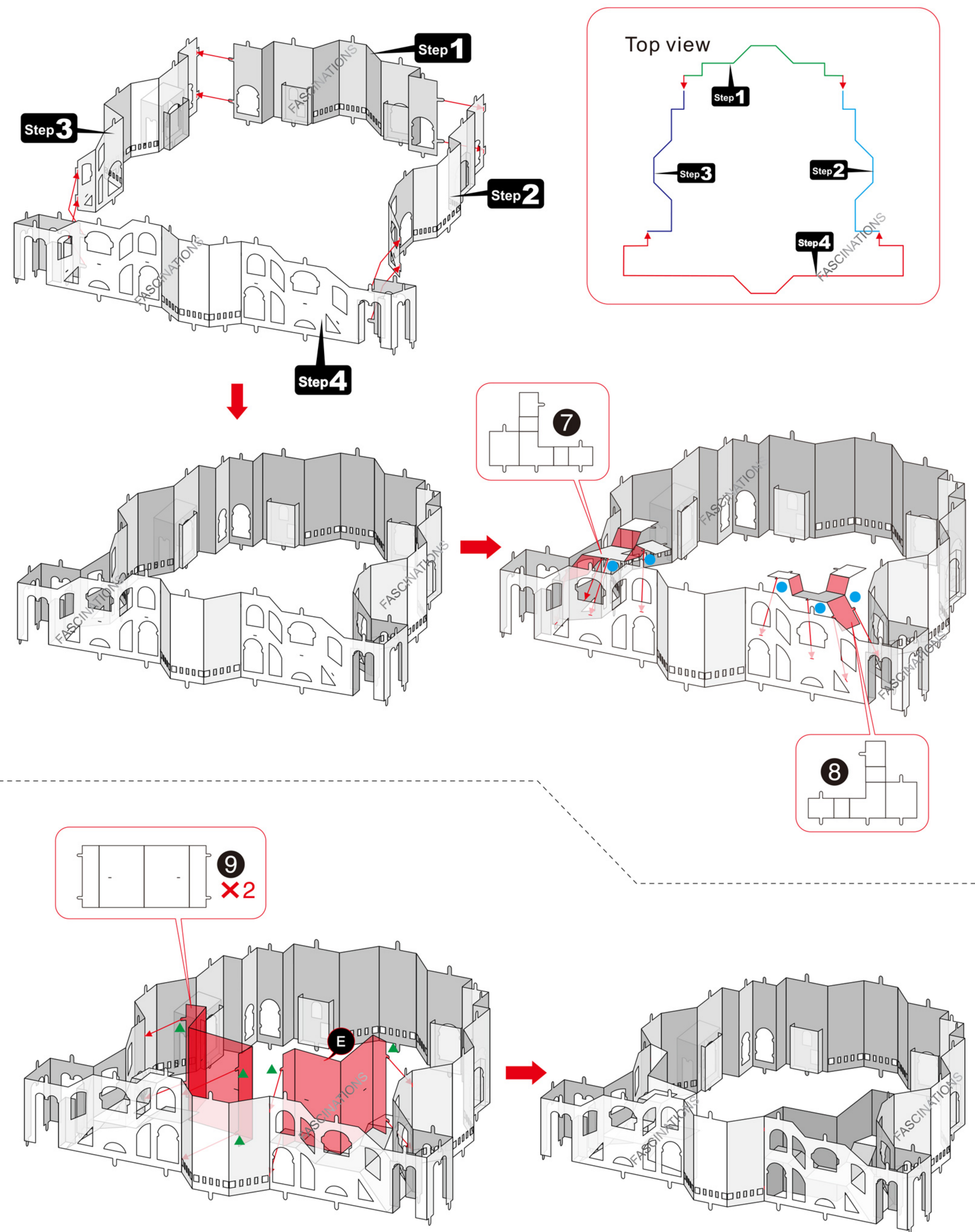
If needed, slightly twist tabs to hold parts together then untwist and bend them down for a nice finish



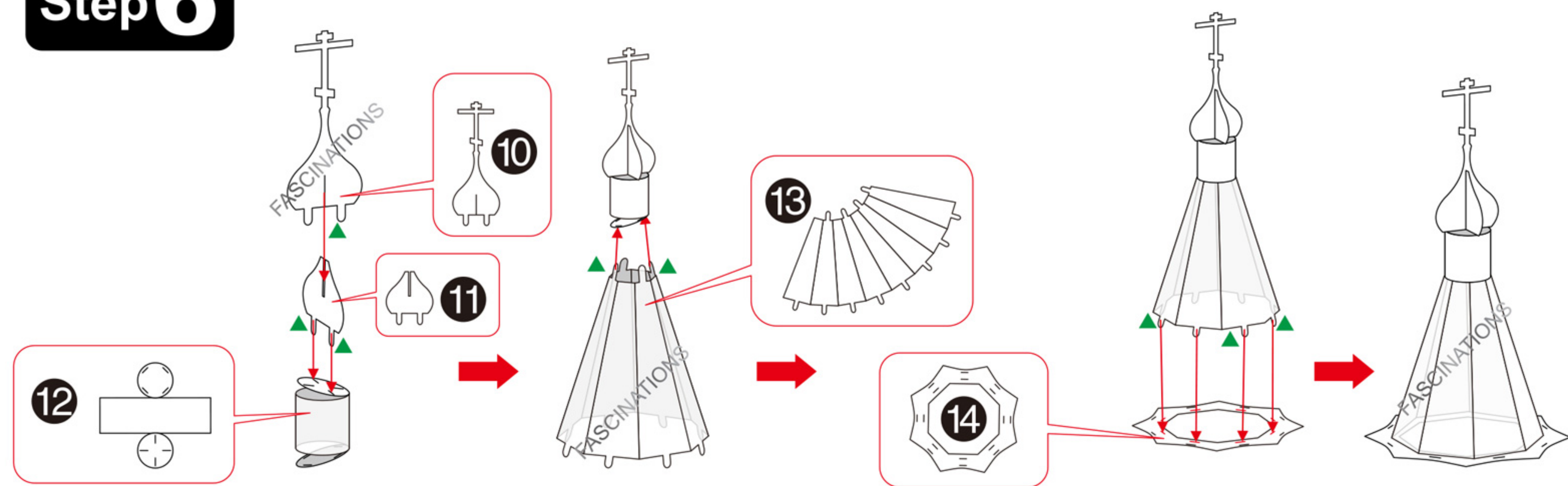
ASSEMBLY STEPS

Step 1

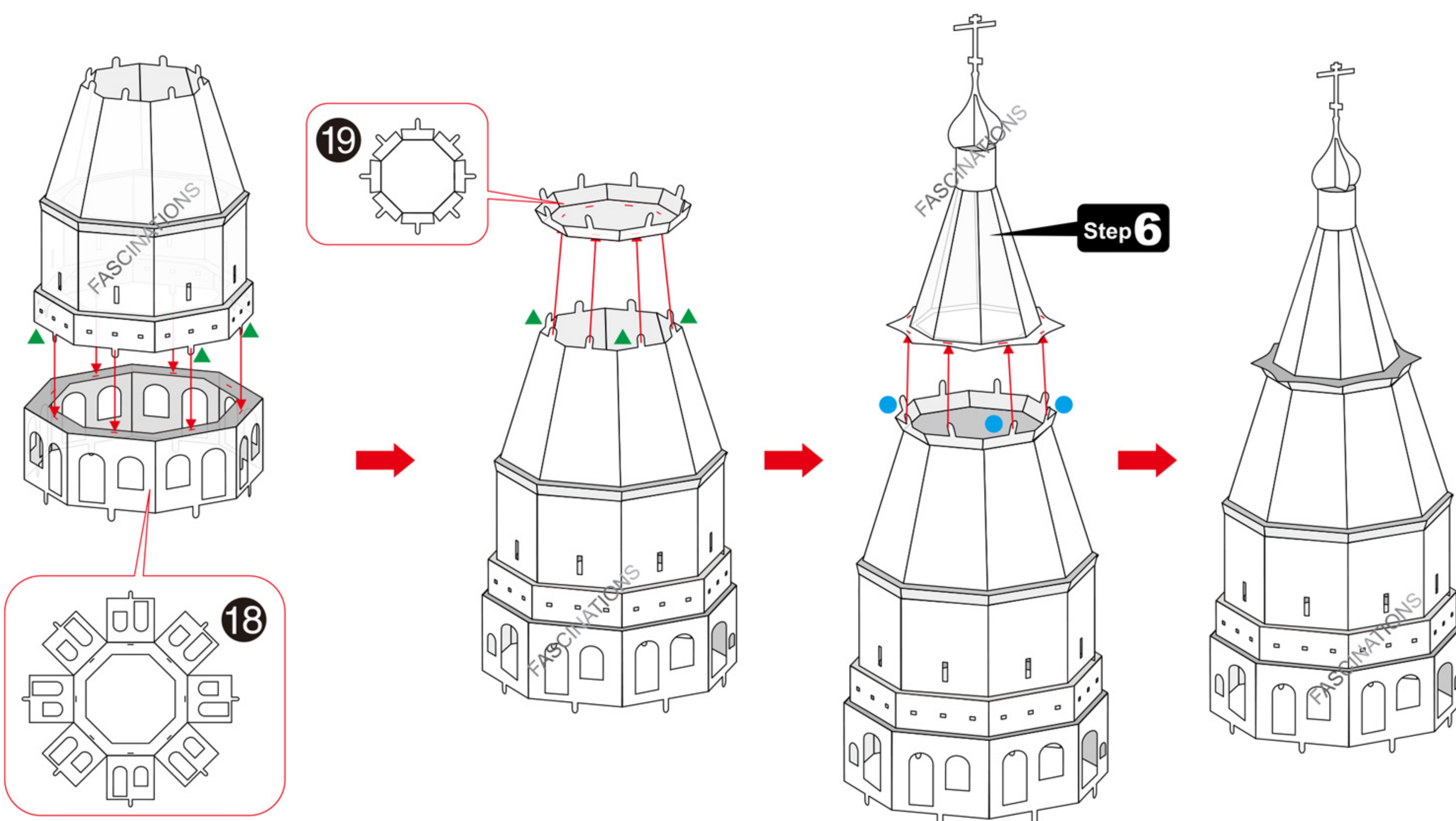
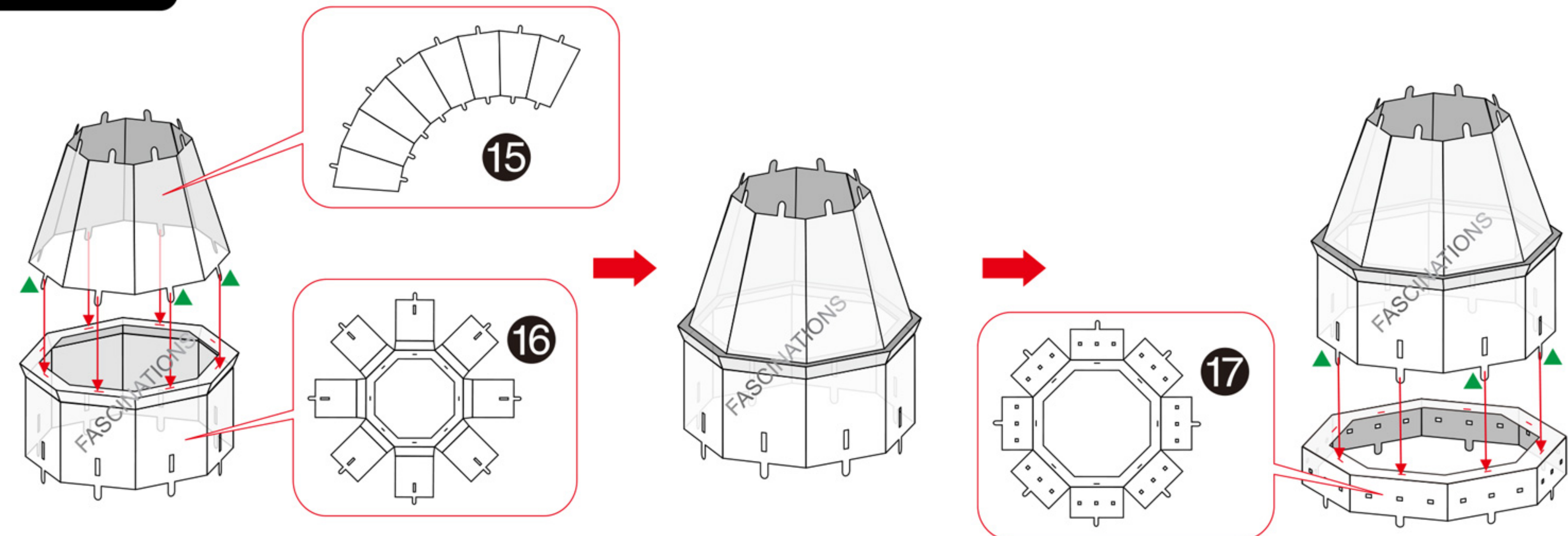


Step 2Engraved side faces
toward the window**Step 3****Step 4****Step 5**

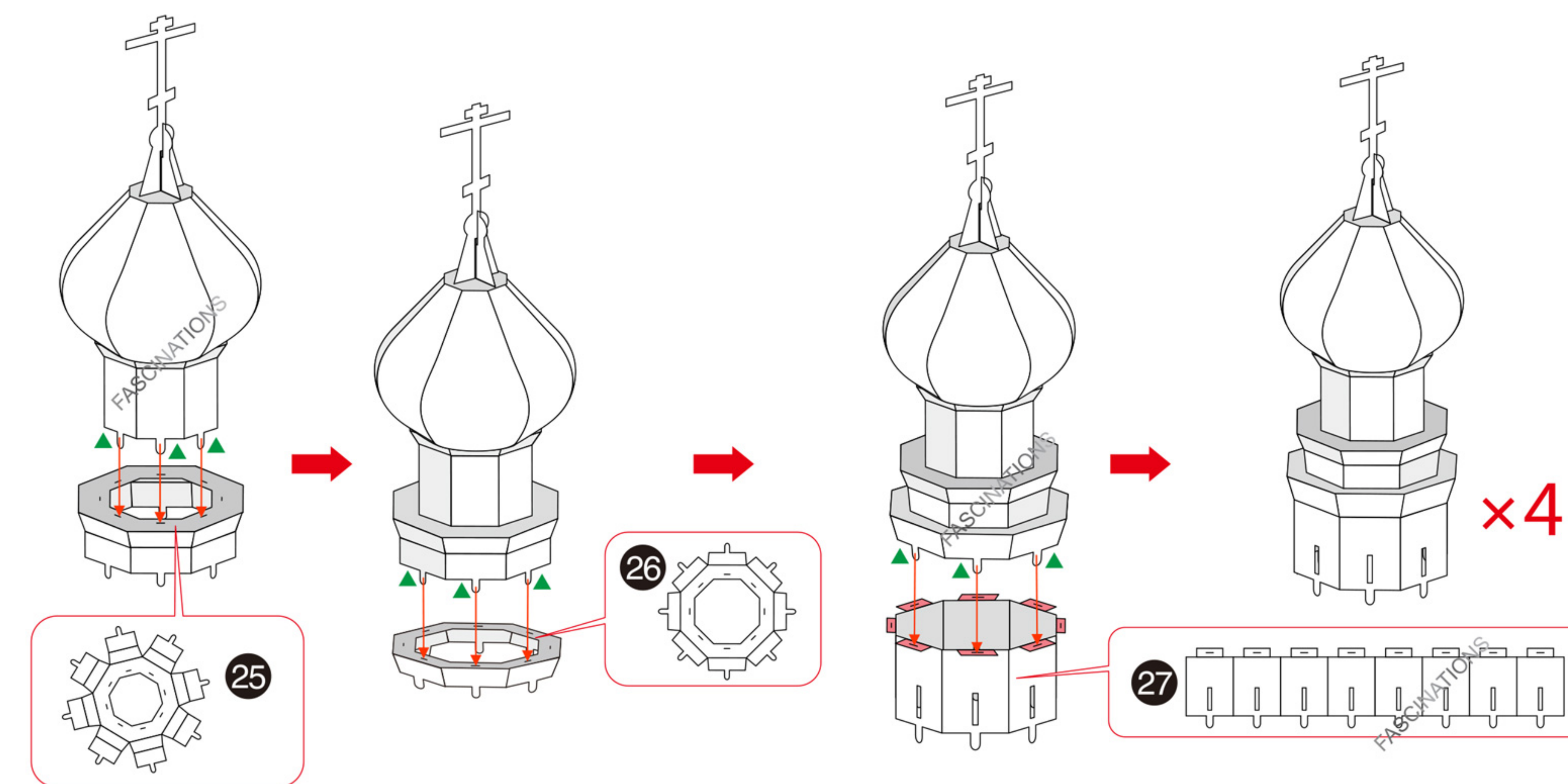
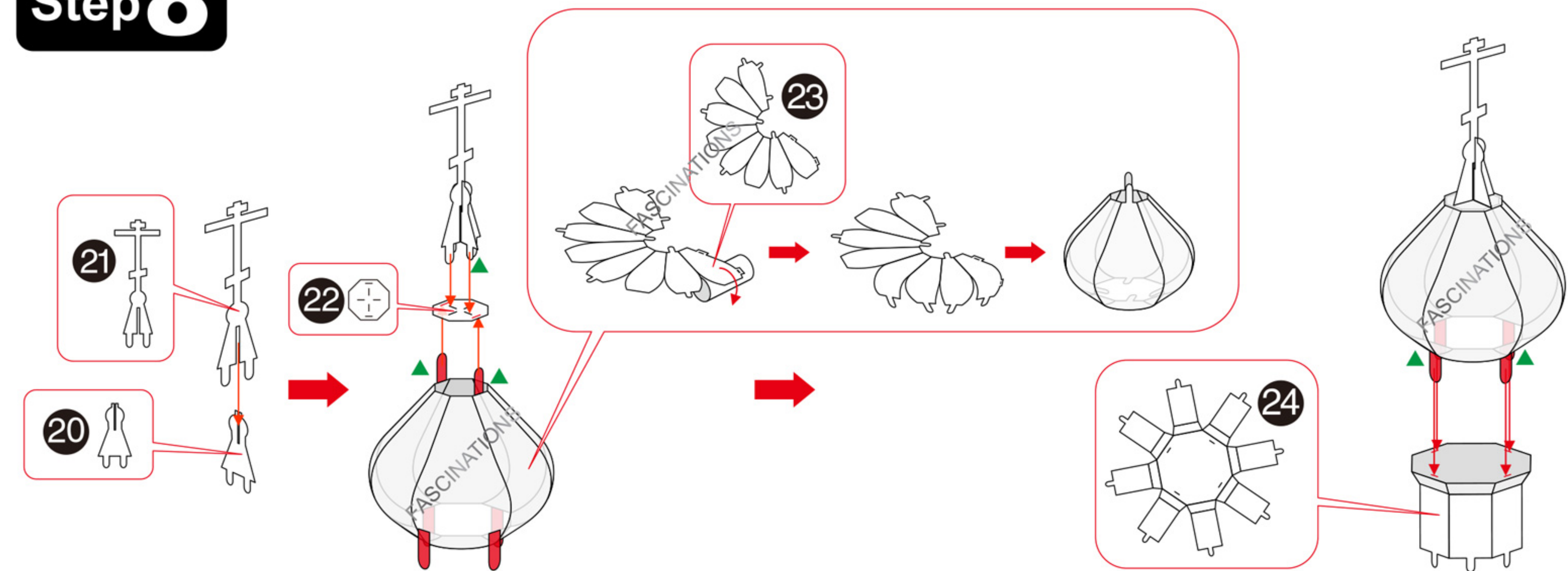
Step 6



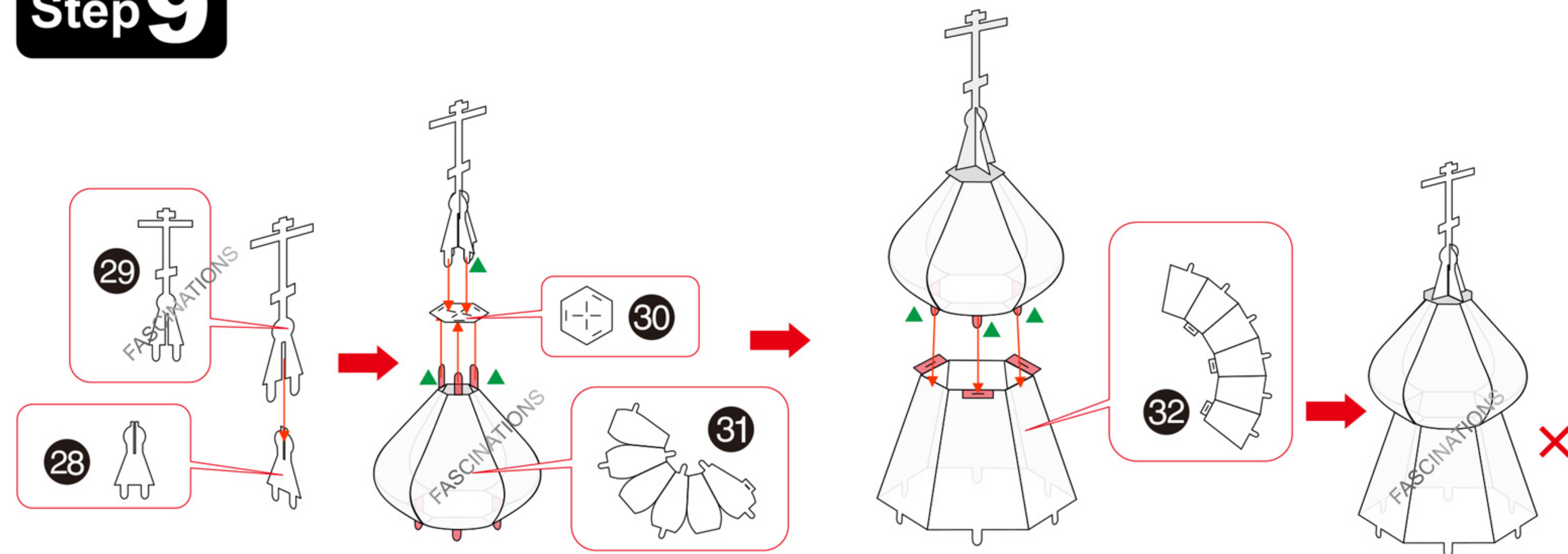
Step 7



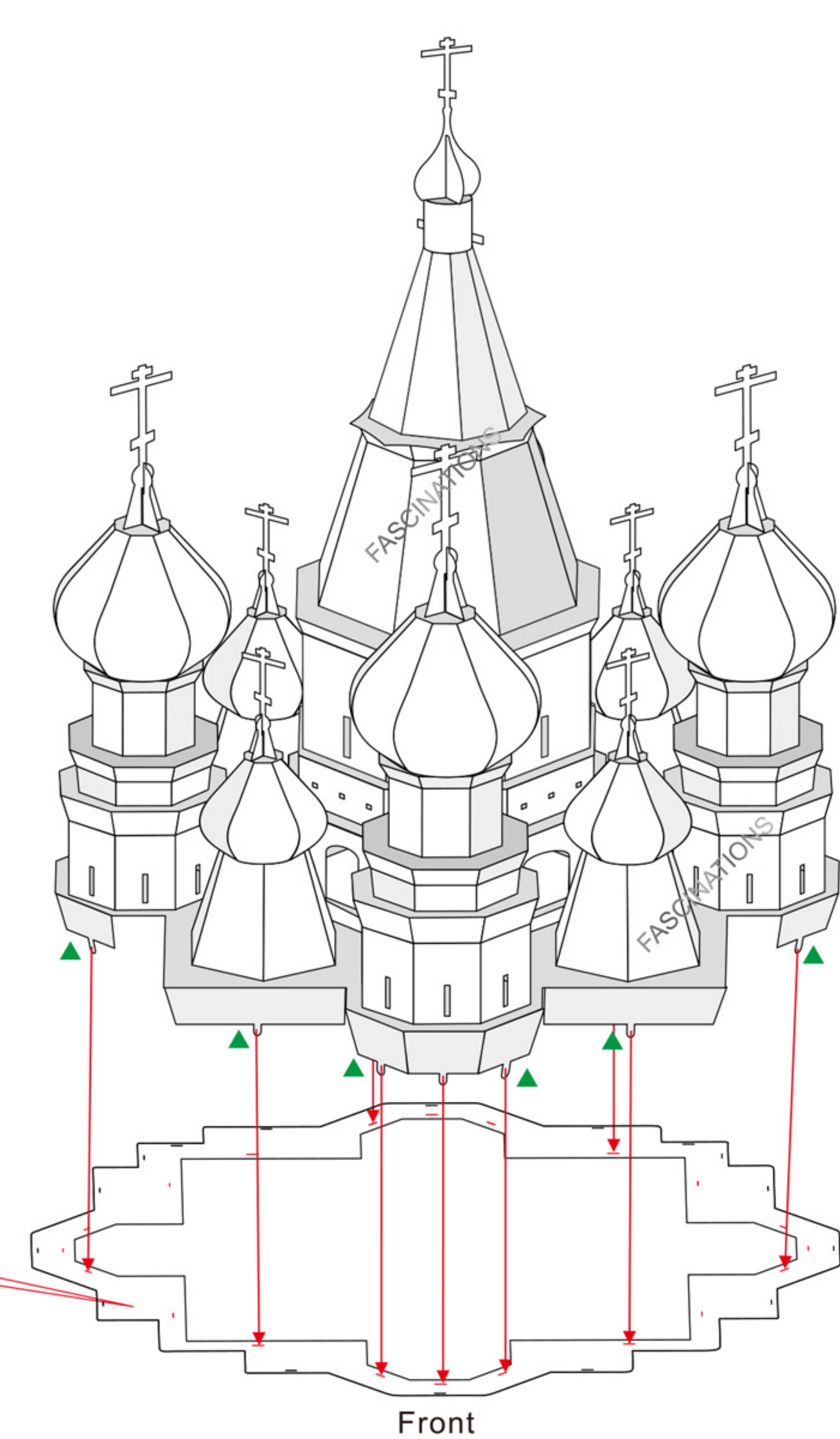
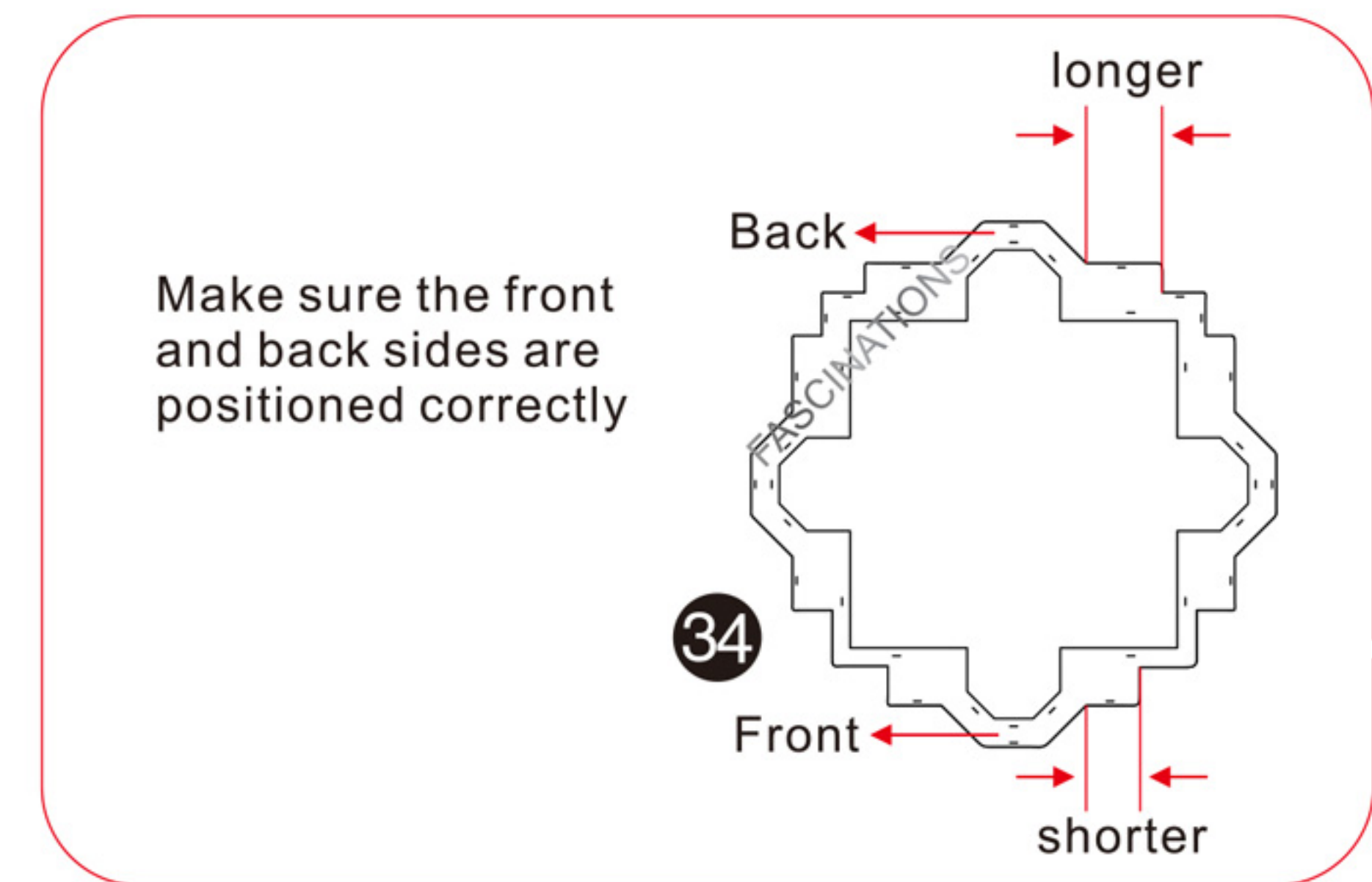
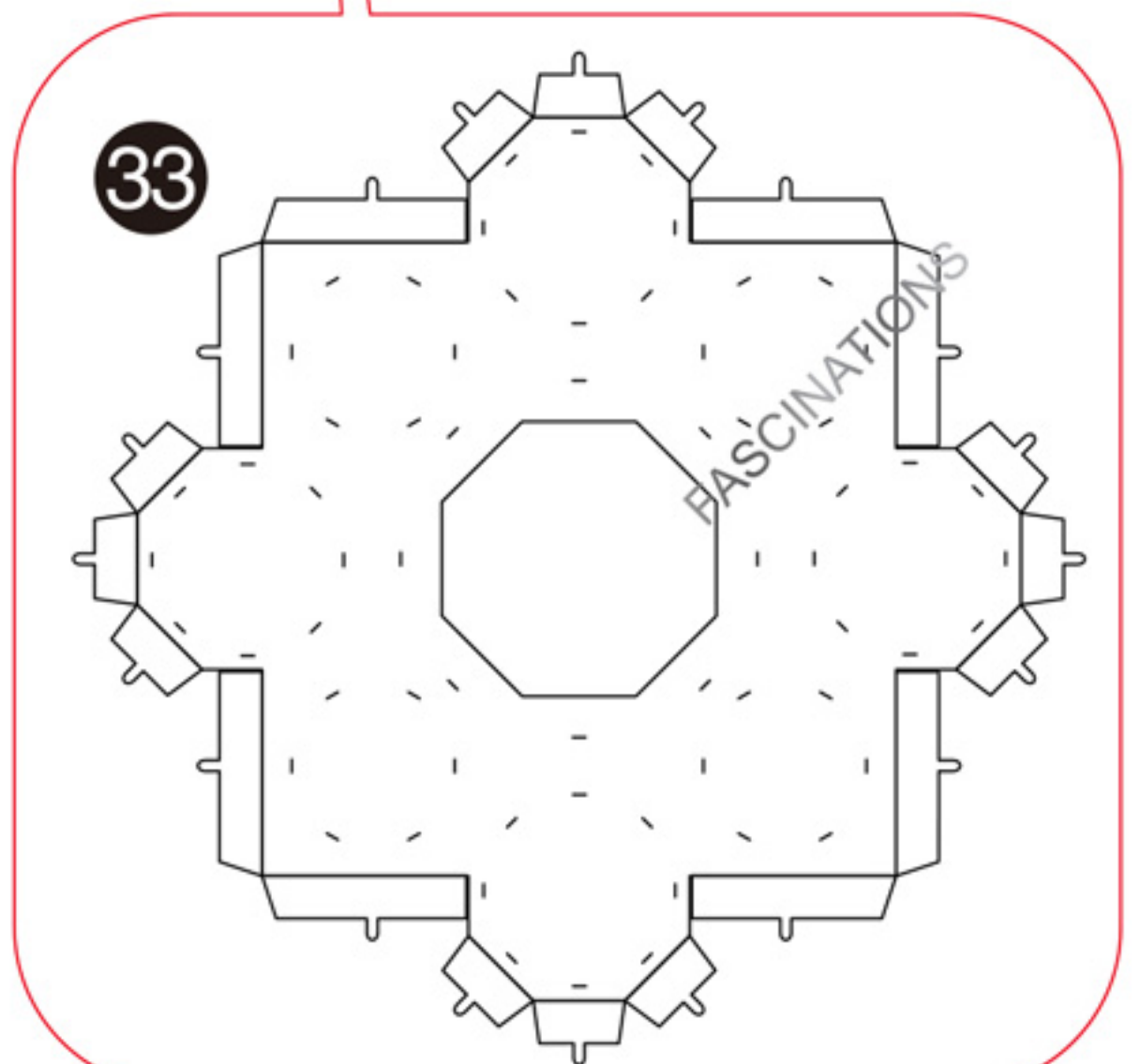
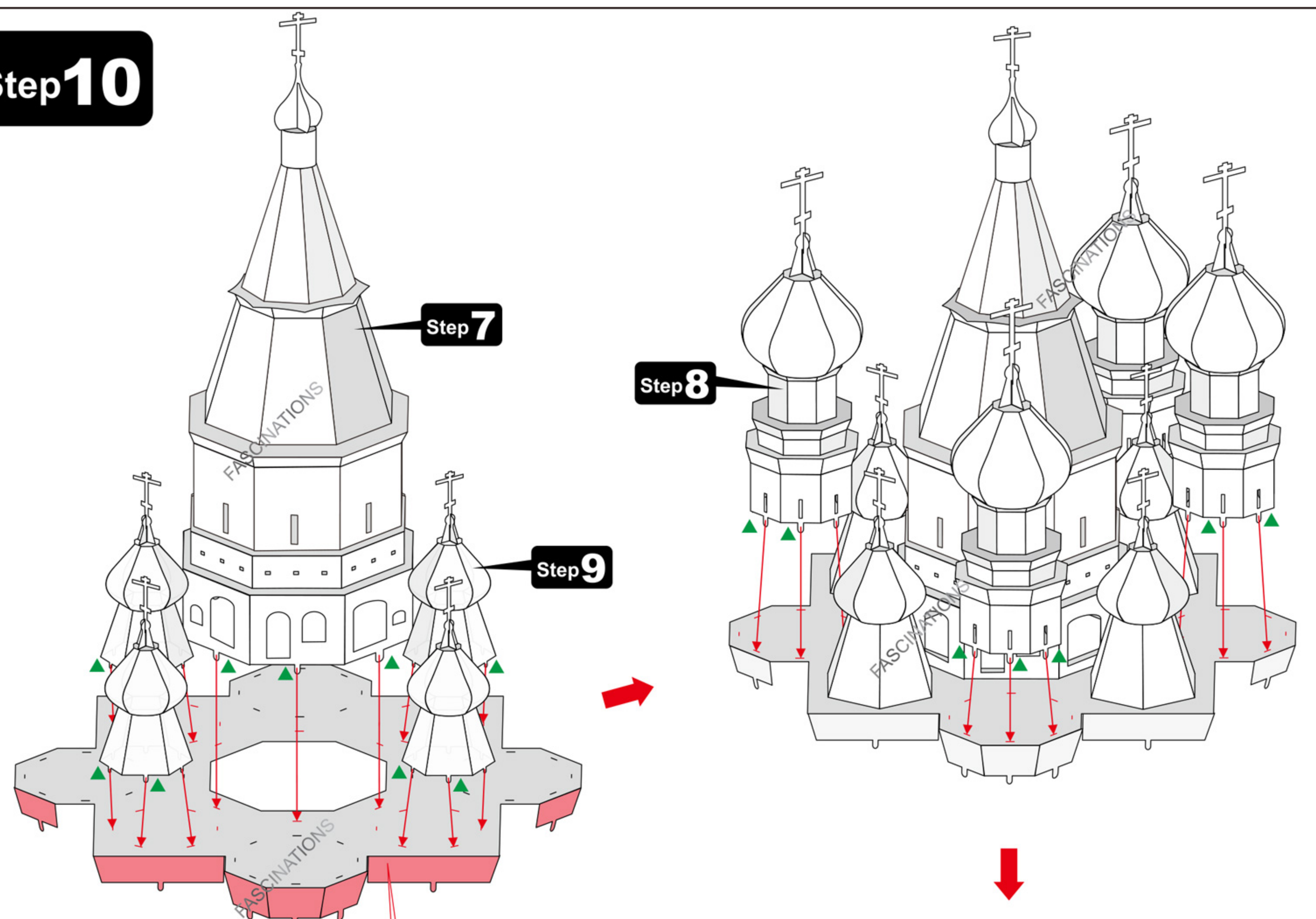
Step 8



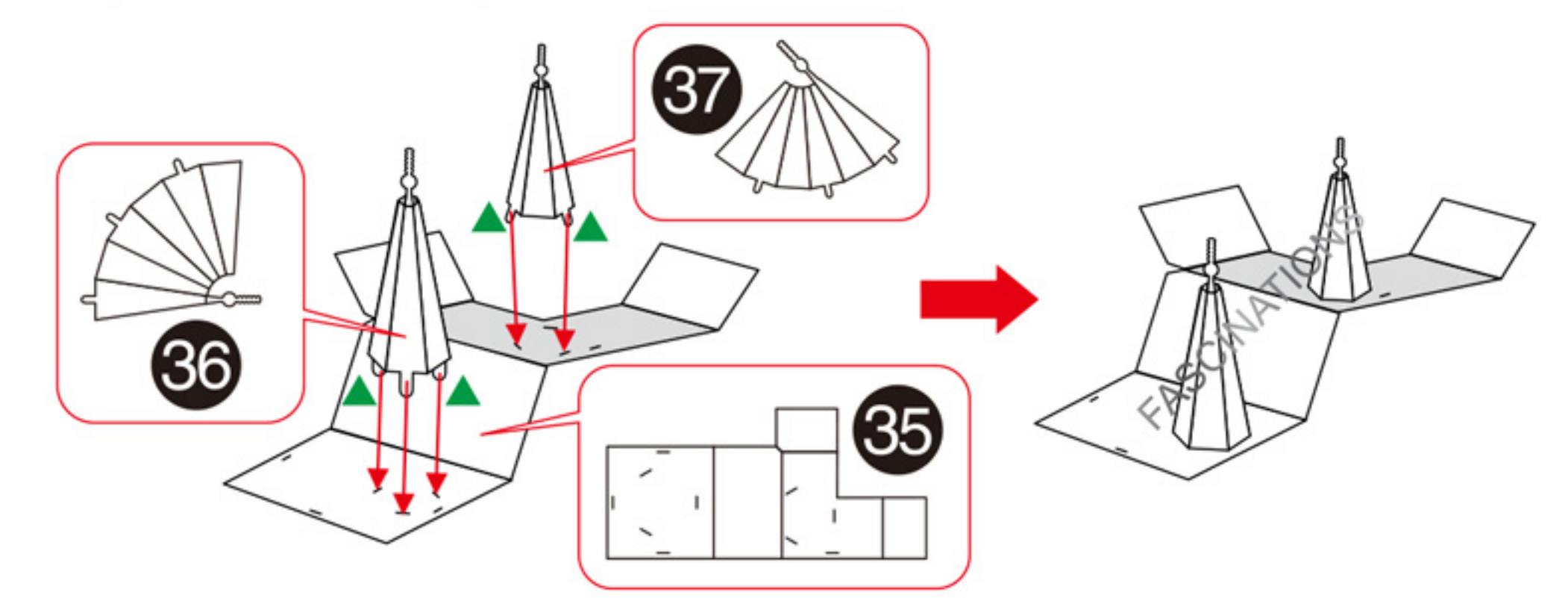
Step 9



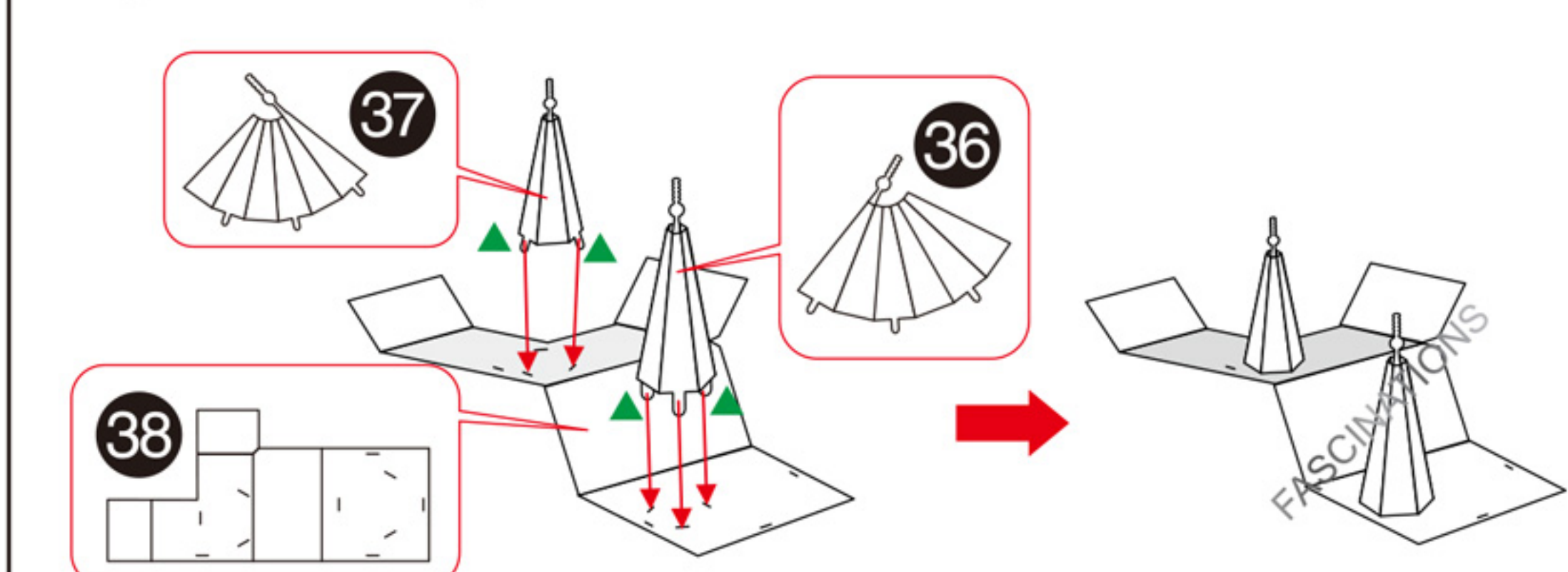
Step10



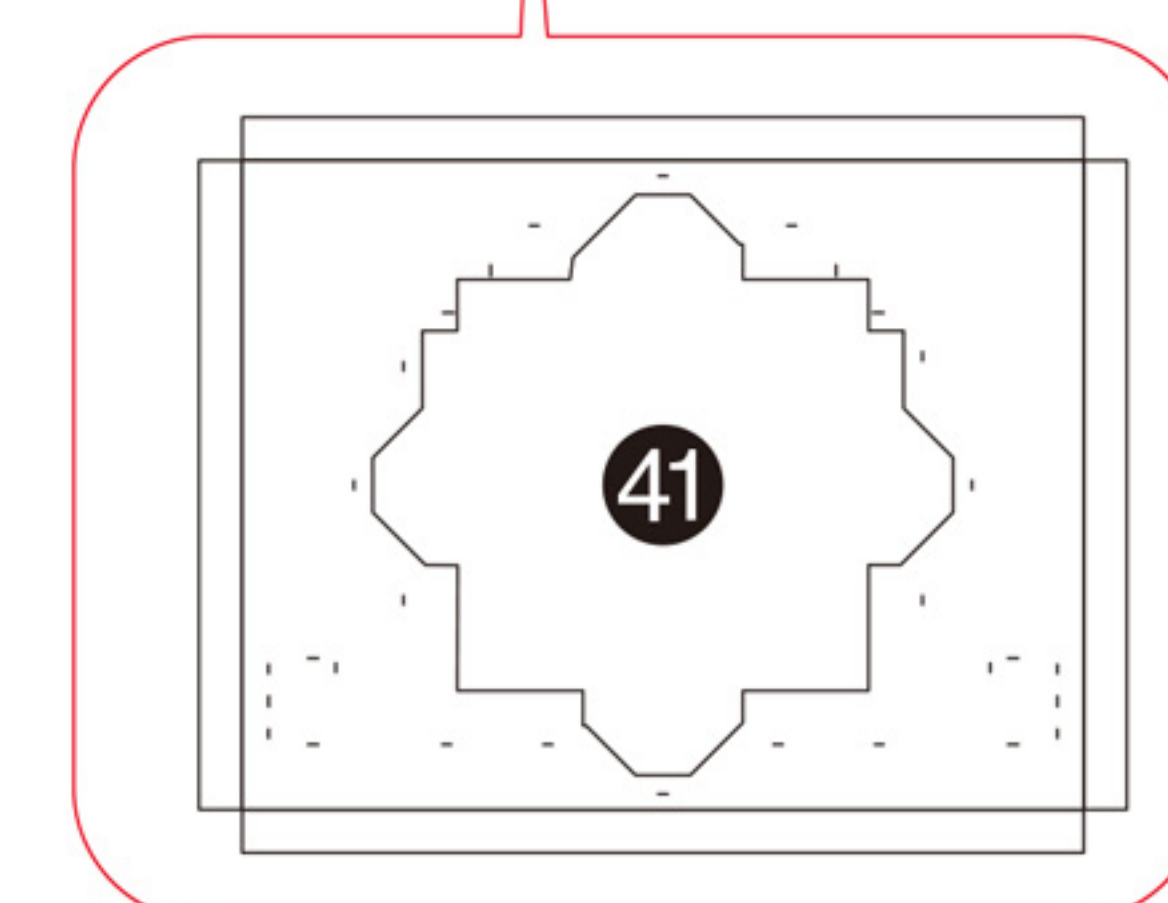
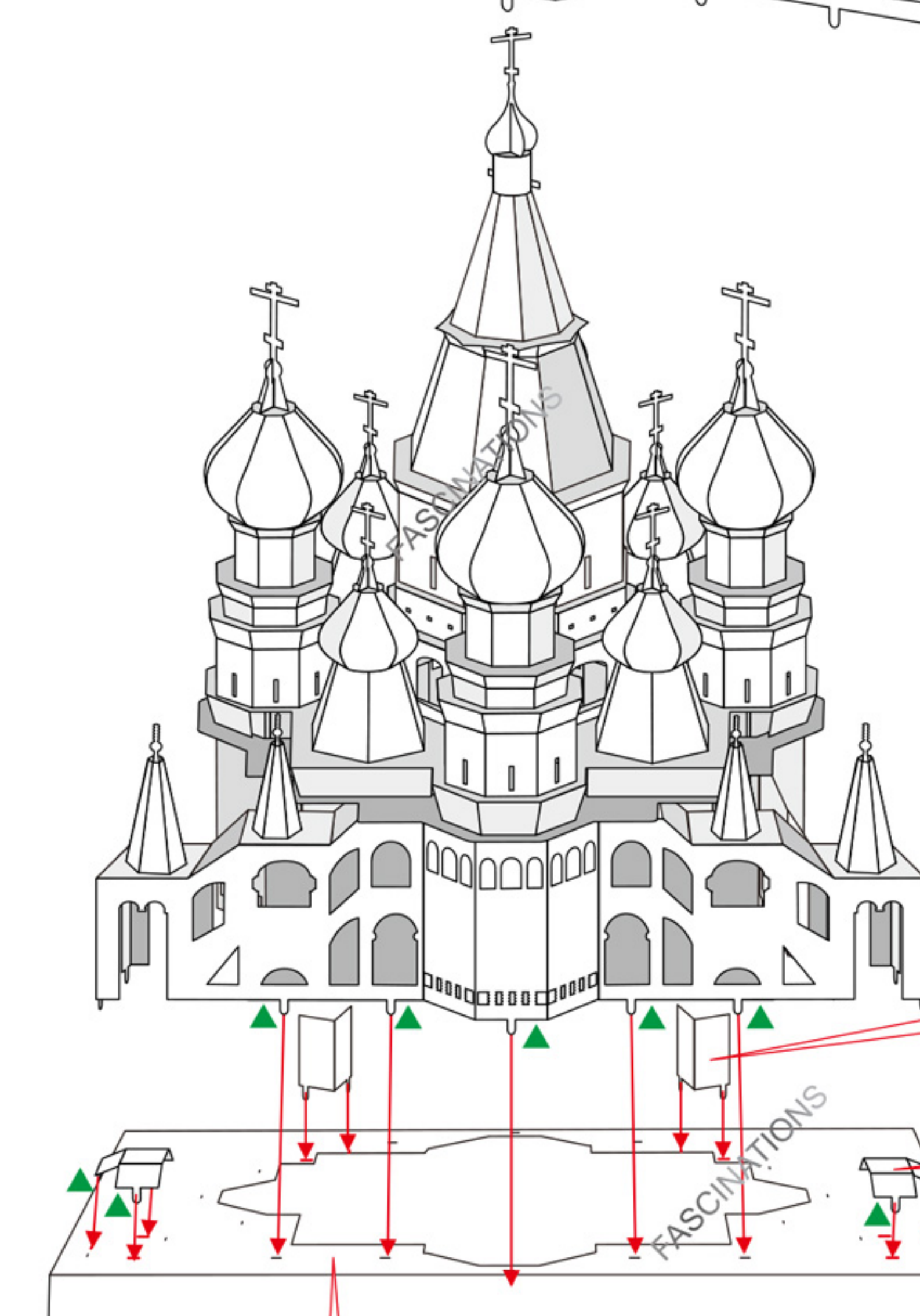
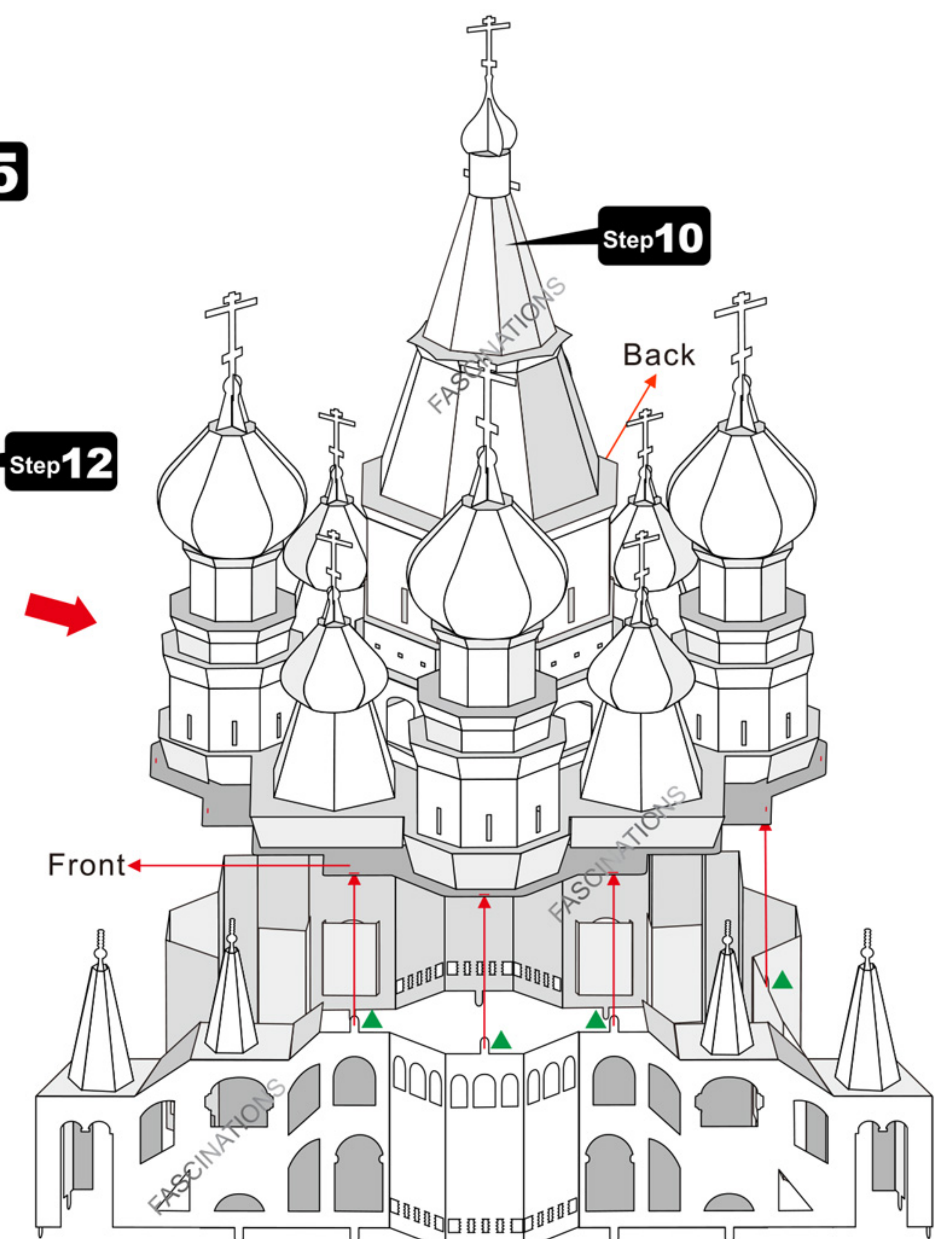
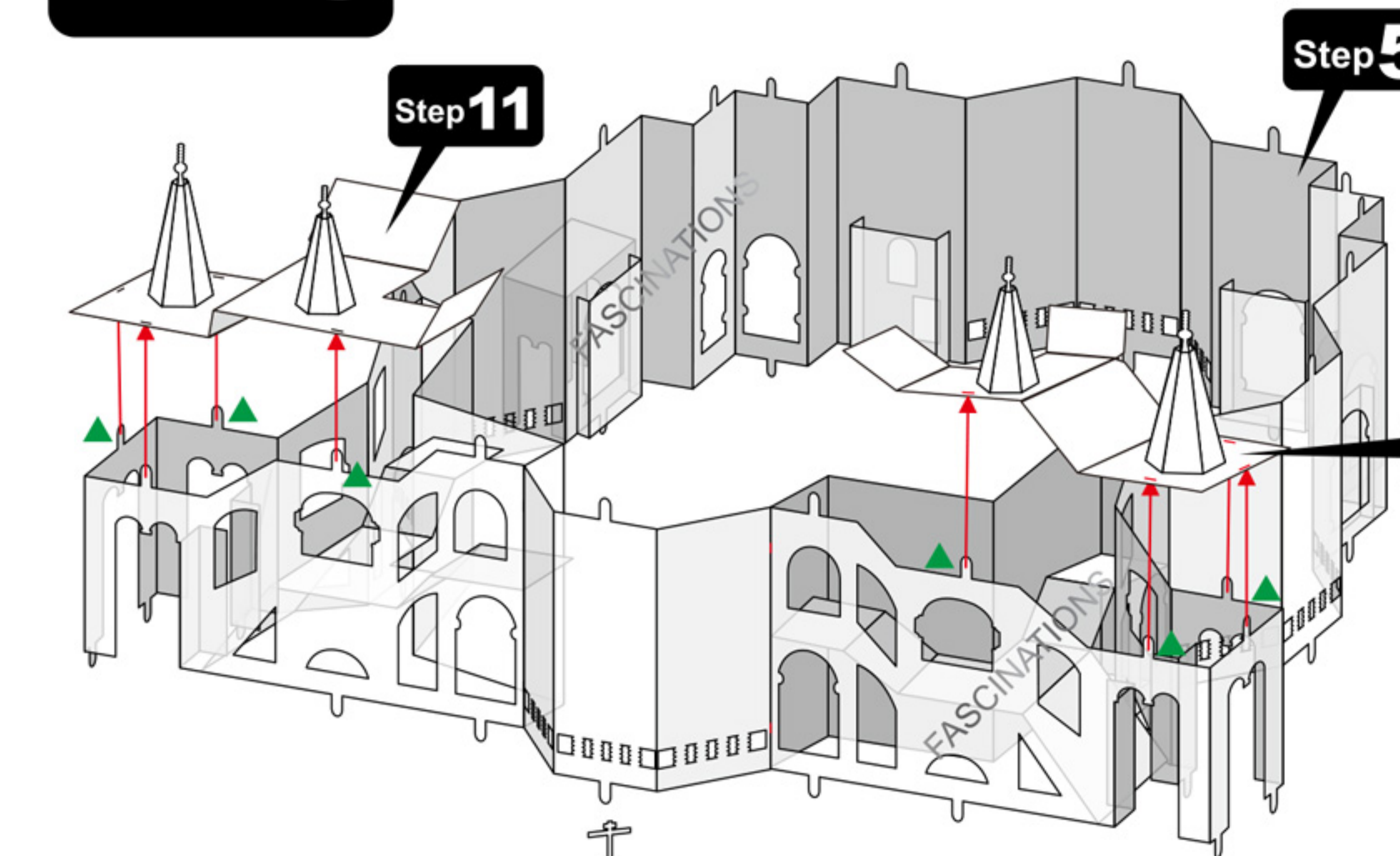
Step11



Step12



Step13



Fascinations
©2017 Fascinations Seattle, WA
www.metalearth.com

