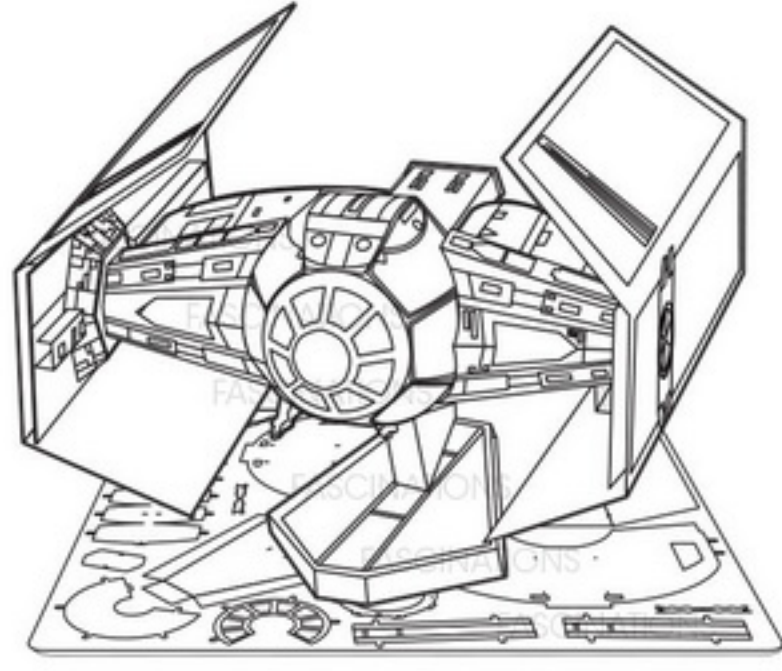


**DARTH VADER'S TIE FIGHTER™**

**360° view**

It is highly recommended that you visit [www.fascinations.com/metalearth360/mms253](http://www.fascinations.com/metalearth360/mms253) to see the completed model before assembling your own

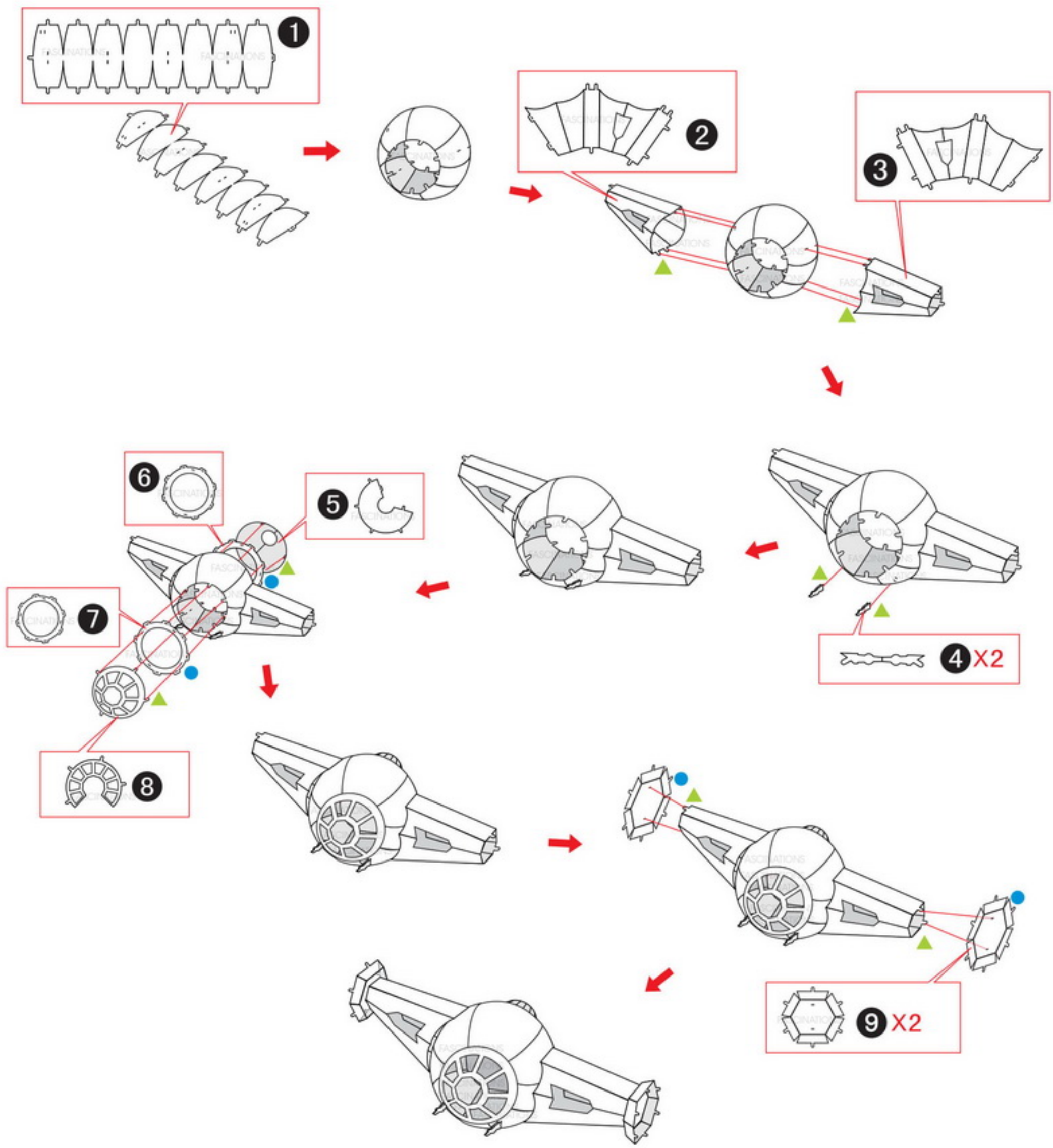


**Notes:**

In order to avoid possible injury from sharp edges, please carefully discard the metal sheet after parts have been removed.

This product is not a toy. Keep out of reach of children.

**Assembly Flow Chart**

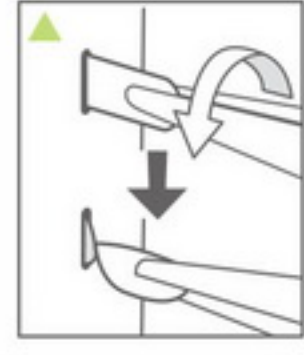
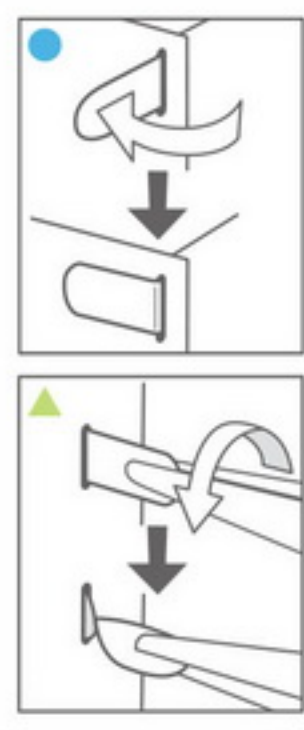
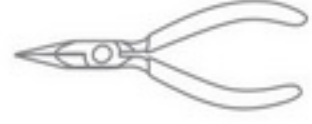


**To create the best connections**

● Insert tab and bend 90 degrees for most visible areas

▲ Insert tab and twist 90 degrees is best in some areas to ensure a tight connection

Needle nose pliers are helpful for assembly



Insertion tabs are inserted and then folded

Fold lines can be seen as shown here

**Metal Sheet**

